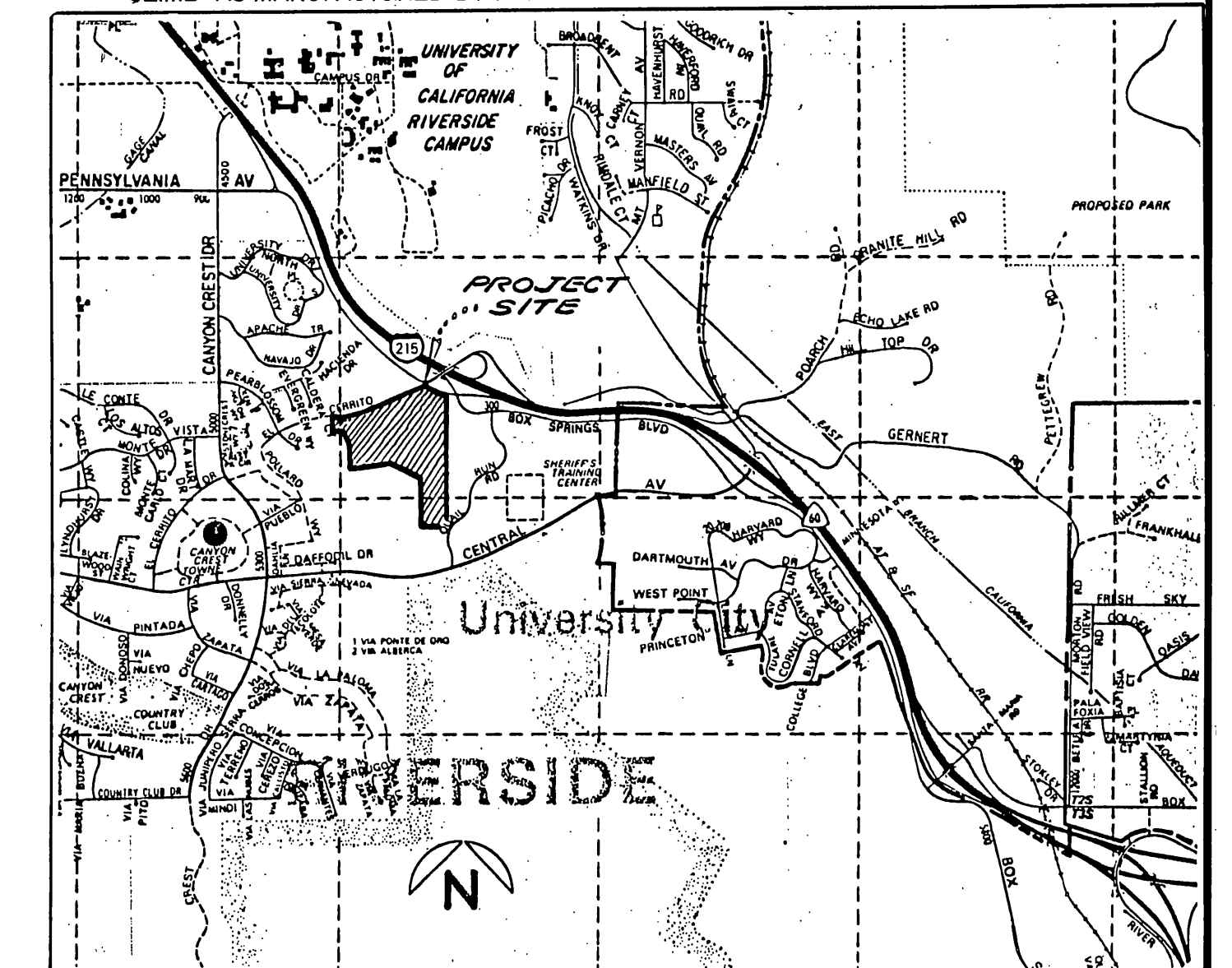


GENERAL NOTES

- IT SHALL BE THE RESPONSIBILITY OF THE CONTRACTOR TO CLEAR THE RIGHT OF WAY IN ACCORDANCE WITH THE PROVISIONS OF LAW AS IT AFFECTS EACH UTILITY INCLUDING IRRIGATION LINES AND APPURTENANCES, AND AT NO COST TO THE CITY.
- CONSTRUCTION SHALL BE IN ACCORDANCE WITH THE CITY OF RIVERSIDE DEPARTMENT OF PUBLIC WORKS, STANDARD DRAWINGS, STANDARD DRAWING NO. 10 AND THE STANDARD SPECIFICATIONS FOR PUBLIC WORKS CONSTRUCTION, CURRENT EDITION.
- THE PRIVATE ENGINEER SIGNING THESE PLANS IS RESPONSIBLE FOR ASSURING THE ACCURACY AND ACCEPTABILITY OF THE WORK HEREON. IN THE EVENT OF DISCREPANCIES ARISING DURING CONSTRUCTION, THE PRIVATE ENGINEER SHALL BE RESPONSIBLE FOR DETERMINING AN ACCEPTABLE SOLUTION AND REVISING THE PLANS FOR APPROVAL BY THE CITY.
- CONTRACTOR IS TO VERIFY EXISTING SEWER ELEVATION PRIOR TO CONSTRUCTION.
- LOCATION OF LATERALS TO BE DETERMINED IN THE FIELD AT THE DIRECTION OF THE OWNER. AVOID CONFLICT WITH PROPOSED AND/OR EXISTING FACILITIES.
- NO FINISHED FLOOR ELEVATION SHALL BE LESS THAN 4' ABOVE THE SEWER FLOW LINE AT POINT OF CONNECTION WITHOUT HAVING A PROPER BACKFLOW VALVE INSTALLED IN THE LATERAL.
- A PLUG SHALL BE INSTALLED AND WILL REMAIN IN PLACE WHERE THE NEW SEWER CONNECTS WITH THE EXISTING SEWER UNTIL THE NEW SEWER IS ACCEPTED BY THE CITY.
- THE SEWER CONTRACTOR SHALL ADJUST MANHOLES TO FINAL GRADE AFTER PAVING IS COMPLETED.
- QUANTITIES SHOWN ARE FOR INFORMATION ONLY AND THE CITY OF RIVERSIDE IS NOT RESPONSIBLE FOR THEIR ACCURACY.
- THE DEVELOPER SHALL BE RESPONSIBLE FOR PRESERVING OR RE-ESTABLISHING AND REFERENCING SURVEY MONUMENTS DESTROYED, DISTURBED OR BURIED AS A RESULT OF CONSTRUCTION SHOWN HEREON.
- THE CONTRACTOR SHALL CALL IN A LOCATION REQUEST TO UNDERGROUND SERVICE ALERT (USA), PHONE # 1-800-422-4133, TWO WORKING DAYS BEFORE DIGGING. NO CONSTRUCTION PERMIT WILL BE ISSUED BY THE PUBLIC WORKS DEPARTMENT INVOLVING EXCAVATION FOR UNDERGROUND FACILITIES UNLESS THE APPLICANT HAS BEEN PROVIDED AN INQUIRY IDENTIFICATION NUMBER BY U.S.A.

CONSTRUCTION NOTES

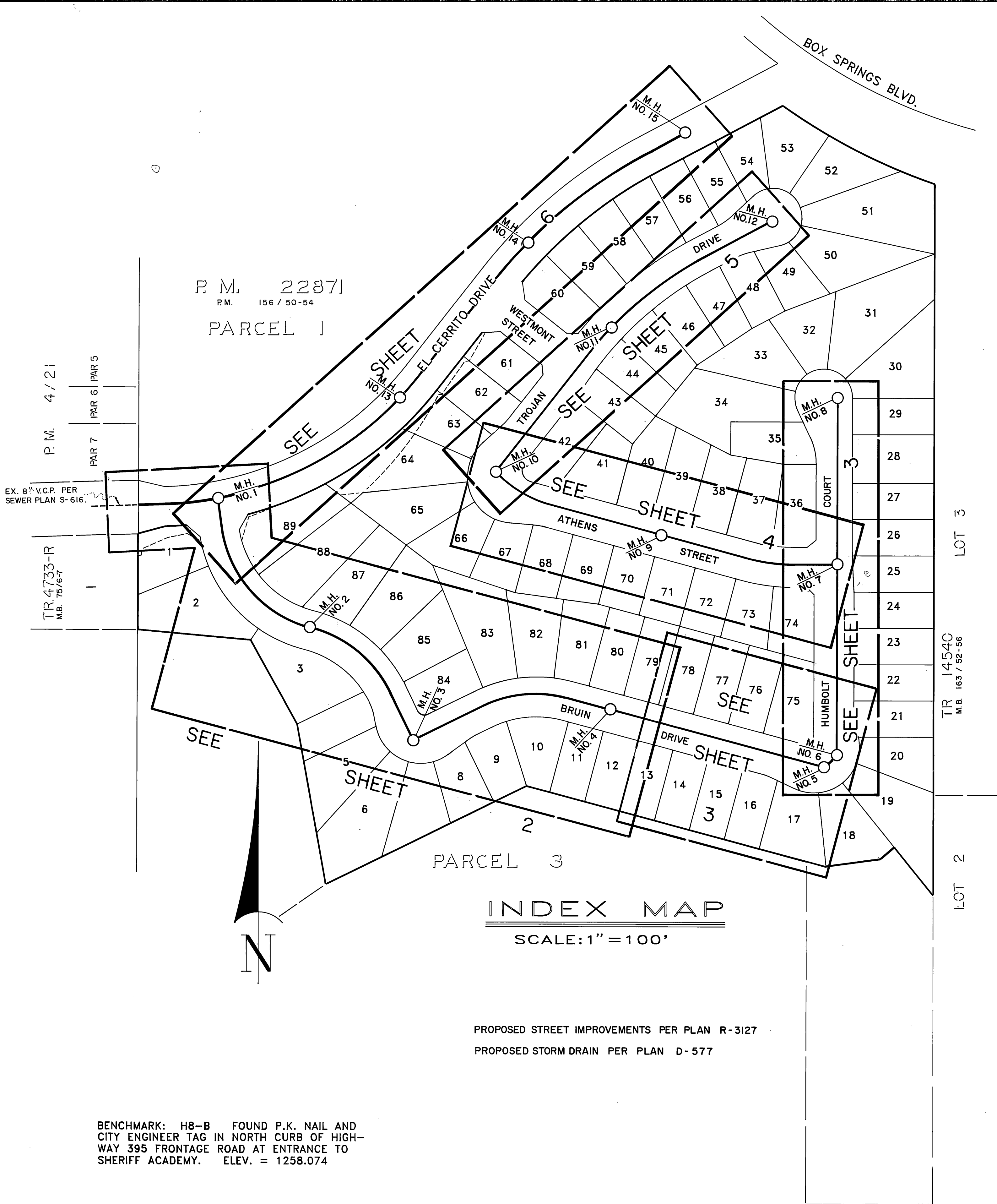
- CONSTRUCT MANHOLE PER CITY OF RIVERSIDE STD. NO. 500.
- SEWER/WATER LINE ENCASUREMENT SHALL CONFORM TO THE CITY WATER DIVISION STANDARDS CWD-022 AND CWD-023.
- CONSTRUCT 8" V.C.P. SEWER MAIN W/PIPE BEDDING PER C/R STD. NO. 452, CASE II * TRUSSES
- CONSTRUCT 4" V.C.P. SEWER LATERAL PER CITY OF RIVERSIDE STD. NO. 562. * A.B.S.
- REMOVE PLUG; JOIN EXISTING V.C.P. SEWER MAIN.
- ALL MANHOLES DEEPER THAN 12' TO THE SHELF SHALL BE EQUIPPED WITH A "SAFE-CLIMB" AS MANUFACTURED BY NORTH CONSUMER SAFETY PROD. OR APPROVED EQUAL.



VICINITY MAP

NOT TO SCALE
THOMAS BROS. MAPS

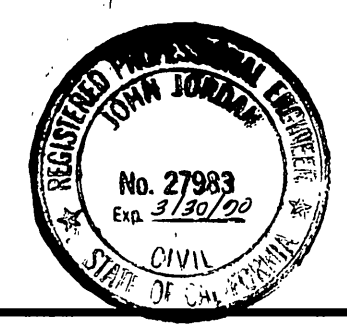
* AS BUILT 2-26-91 LPH



INDEX MAP
SCALE: 1" = 100'

PROPOSED STREET IMPROVEMENTS PER PLAN R-3127
PROPOSED STORM DRAIN PER PLAN D-577

BENCHMARK: H8-B FOUND P.K. NAIL AND CITY ENGINEER TAG IN NORTH CURB OF HIGHWAY 395 FRONTAGE ROAD AT ENTRANCE TO SHERIFF ACADEMY. ELEV. = 1258.074



CITY OF RIVERSIDE WATER SYSTEM
APPROVED BY: *Richard L. Decker* DATE: 4/4/90

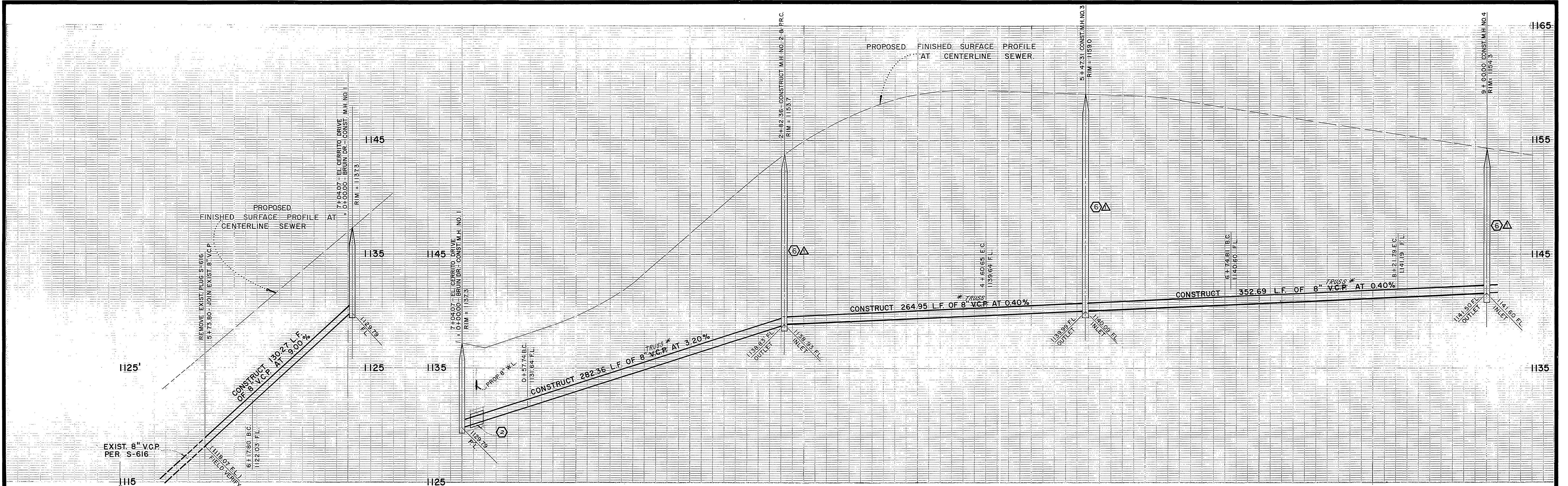
J. BEELER and associates LAND SURVEYING AND MAPPING
6104 RIVERSIDE AVENUE SUITE B
RIVERSIDE, CA. 92506
(714)682-2216

PLANS PREPARED UNDER THE SUPERVISION OF:
[Signature] DATE: 1/20/89
R.C.E. 27983 EXP. 3/30/90

MARK	DESIGNED BY: E.B.	REVISIONS	APPR. DATE
ADD "SAFE-CLIMB" FOR M.H. OVER 12' DEEP - SEE M.H.			
	DRAWN BY: E.R.B./JAT		CHECKED BY: J.L.J.

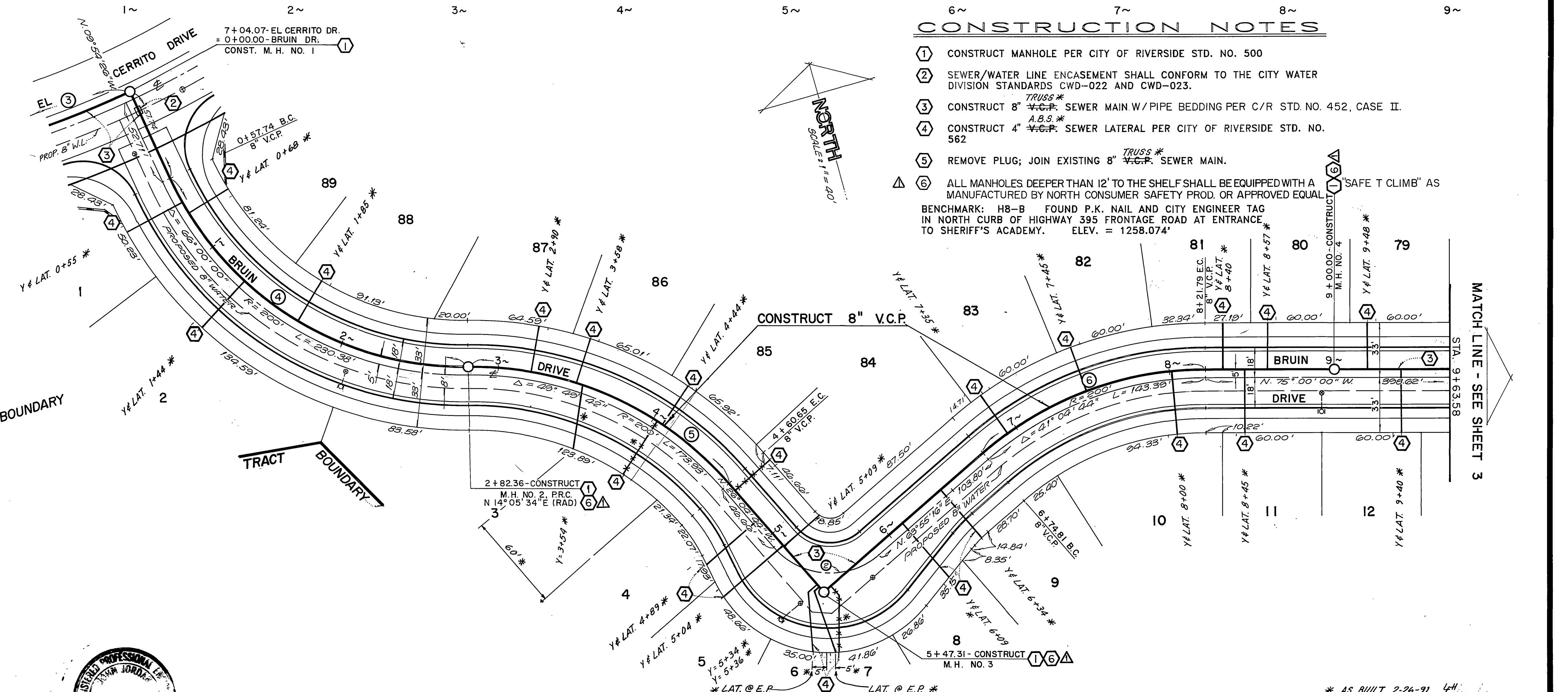
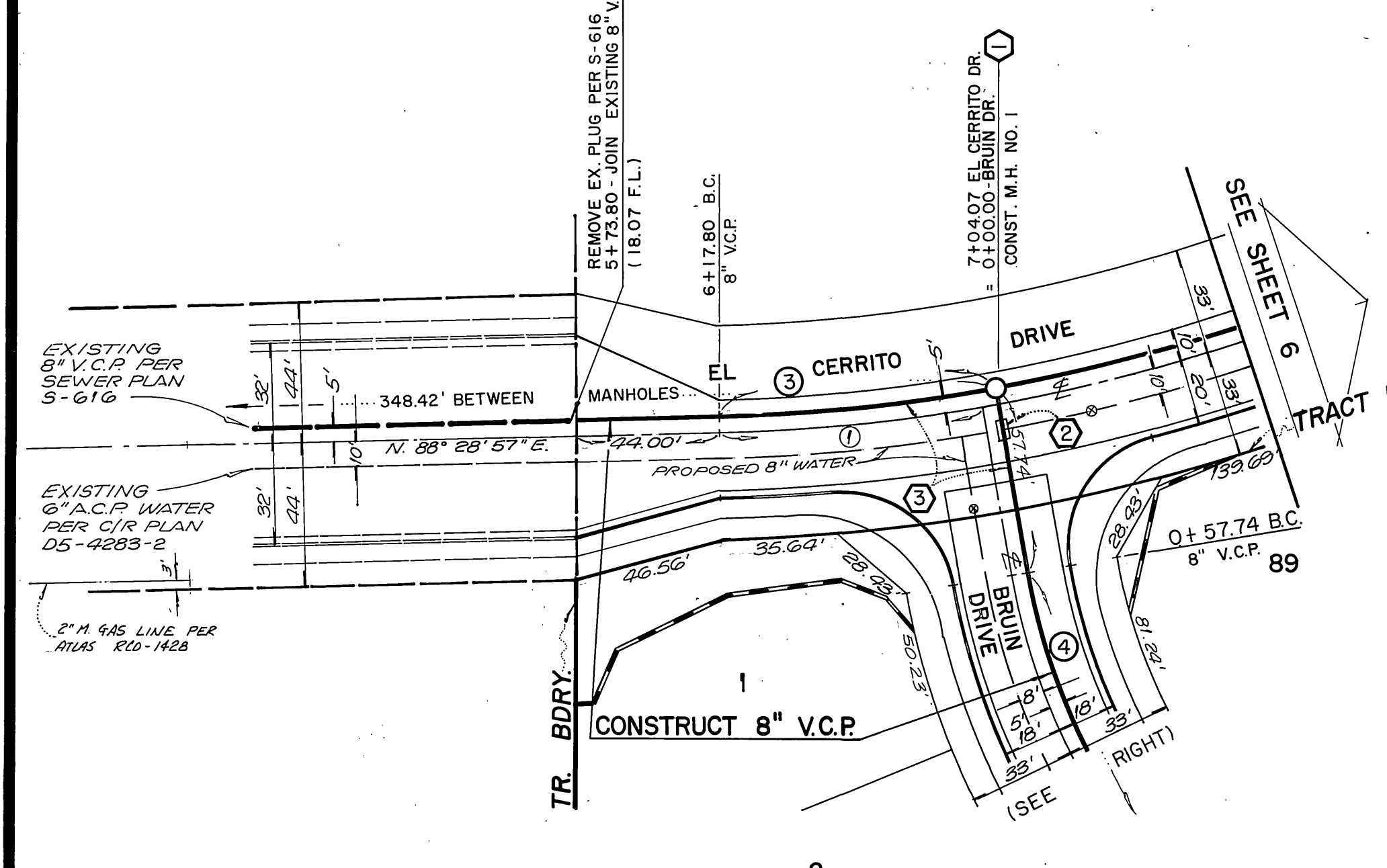
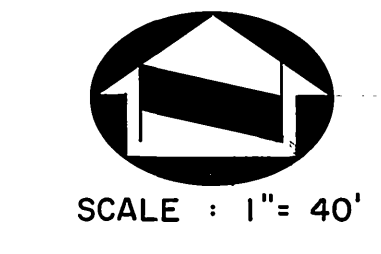
CITY OF RIVERSIDE			
PUBLIC WORKS DEPARTMENT			
APPROVED BY	DATE	BY	APPROVED BY
<i>[Signature]</i>	6/15/90	<i>[Signature]</i>	<i>[Signature]</i>
TRAFFIC DIVISION			PUBLIC WORKS DIRECTOR
CHIEF P.W. ENGINEER	6/18/90	<i>[Signature]</i>	DATE: 6/20/90

SEWER PLAN AND PROFILE		ACCOUNT NO.
TRACT 24684		S-1574
HORIZ. SCALE: 1" = 100'		VERT. SCALE: 1" =
SHEET 1 OF 6		88-259-03

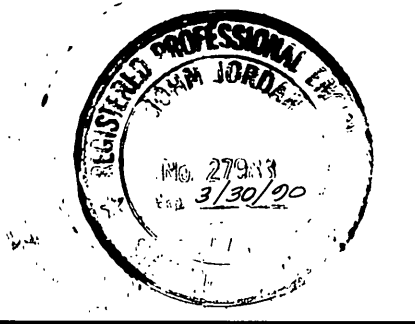


CURVE DATA

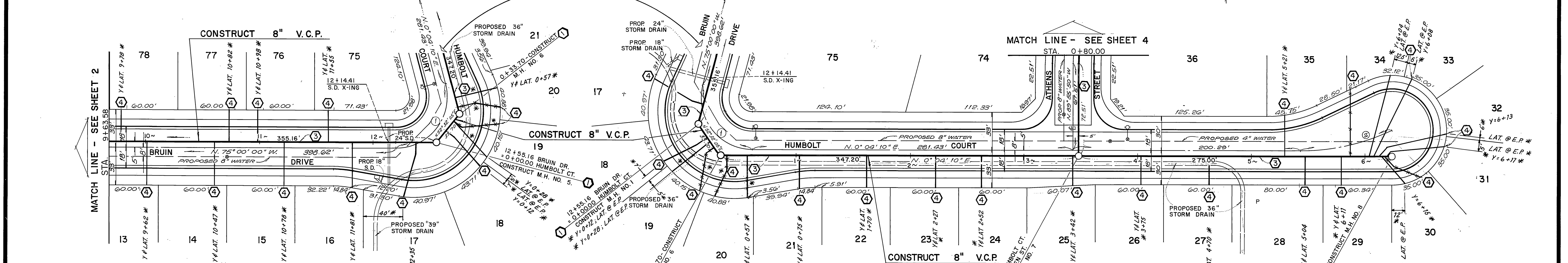
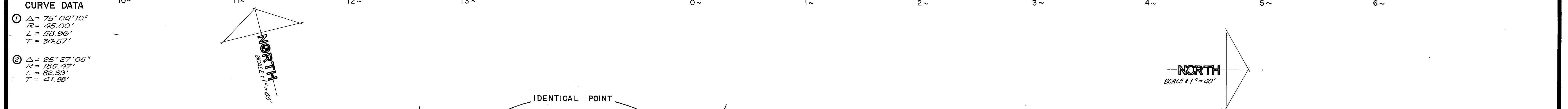
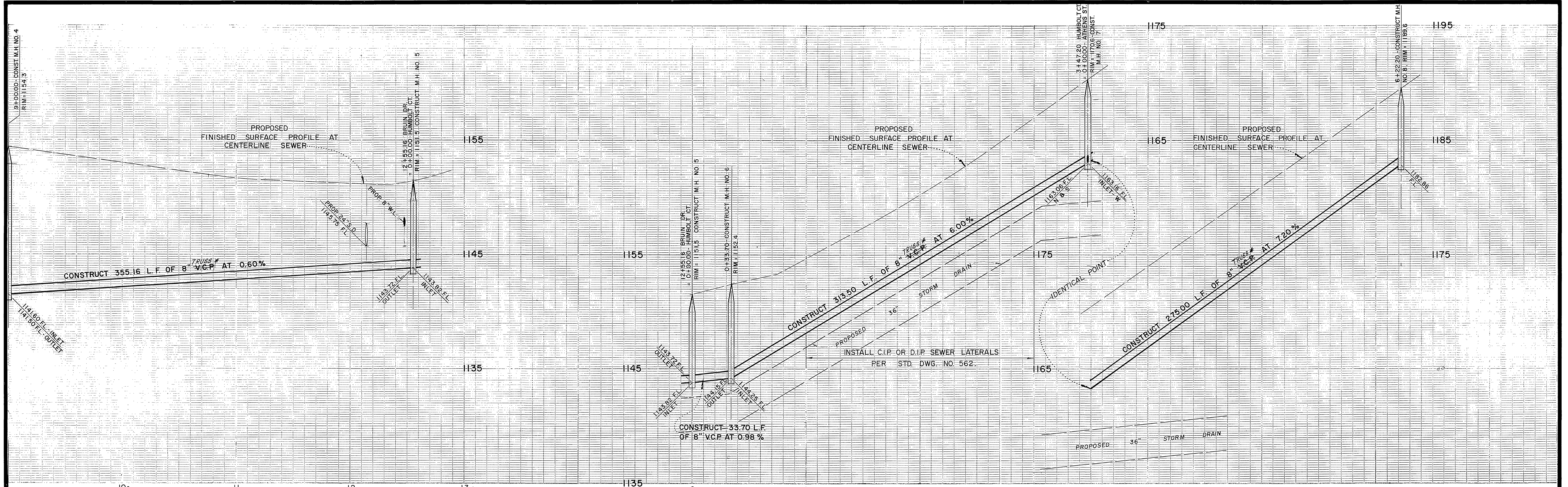
① Δ = 08 23' 23"	④ Δ = 66 00' 00"
R = 360'	R = 195'
L = 82.00'	L = 224.62'
T = 41.07'	T = 126.63'
② Δ = 90 00' 00"	⑤ Δ = 49 49' 42"
R = 45'	R = 205'
L = 70.69'	L = 178.28'
T = 45.00'	T = 95.22'
③ Δ = 08 54' 21"	⑥ Δ = 41 04' 44"
R = 555'	R = 205'
L = 86.27'	L = 146.98'
T = 43.22'	T = 76.81'



- CONSTRUCTION NOTES**
- ① CONSTRUCT MANHOLE PER CITY OF RIVERSIDE STD. NO. 500
 - ② SEWER/WATER LINE ENCASEMENT SHALL CONFORM TO THE CITY WATER DIVISION STANDARDS CWD-022 AND CWD-023.
 - ③ CONSTRUCT 8" TRUSS* SEWER MAIN W/ PIPE BEDDING PER C/R STD. NO. 452, CASE II.
 - ④ CONSTRUCT 4" TRUSS* SEWER LATERAL PER CITY OF RIVERSIDE STD. NO. 562
 - ⑤ REMOVE PLUG; JOIN EXISTING 8" TRUSS* SEWER MAIN.
 - ⑥ ALL MANHOLES DEEPER THAN 12' TO THE SHELF SHALL BE EQUIPPED WITH A MANUFACTURED BY NORTH CONSUMER SAFETY PROD. OR APPROVED EQUAL "SAFE T CLIMB" AS BENCHMARK: H8-B FOUND P.K. NAIL AND CITY ENGINEER TAG IN NORTH CURB OF HIGHWAY 395 FRONTAGE ROAD AT ENTRANCE TO SHERIFF'S ACADEMY. ELEV. = 1258.074'

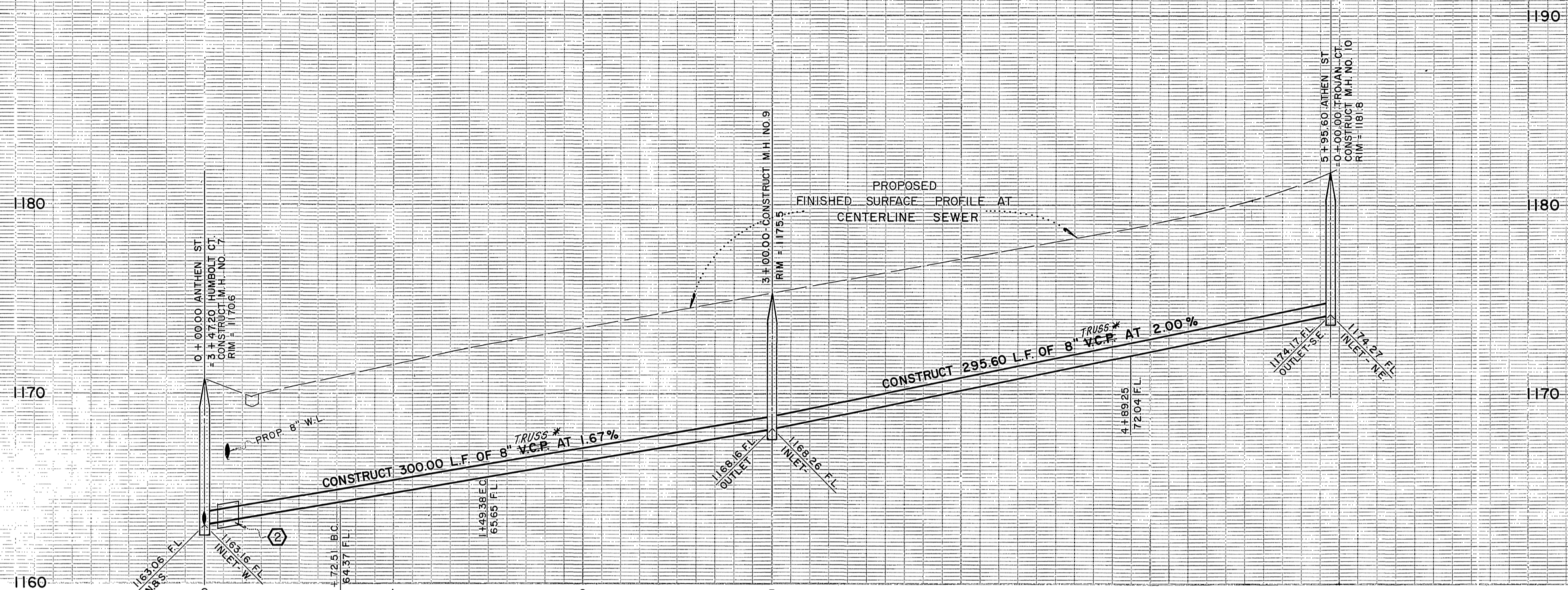


CITY OF RIVERSIDE WATER SYSTEM APPROVED BY: <i>Ronald J. Dredel</i> DATE: 4-4-90		JN BEELER LAND SURVEYING AND MAPPING 6104 RIVERSIDE AVENUE SUITE 9 RIVERSIDE, CA. 92506 (714)682-2216		CITY OF RIVERSIDE PUBLIC WORKS DEPARTMENT APPROVED BY: <i>Larry Beck</i> PRINCIPAL ENGINEER DATE: 6/16/90 TRAFFIC DIVISION CHIEF P.W. ENGINEER DATE: 6/20/90		SEWER PLAN AND PROFILE TRACT 24684 ACCOUNT NO. S-1574 SHEET 2 OF 6	
DESIGNED BY: E.B. DRAWN BY: E.L.L. CHECKED BY: J.L.J.		REVISIONS:		DATE: 6/20/90		HORIZ. SCALE: 1" = 40' VERT. SCALE: 1" = 4' INDEXED 7-29-90 CH	



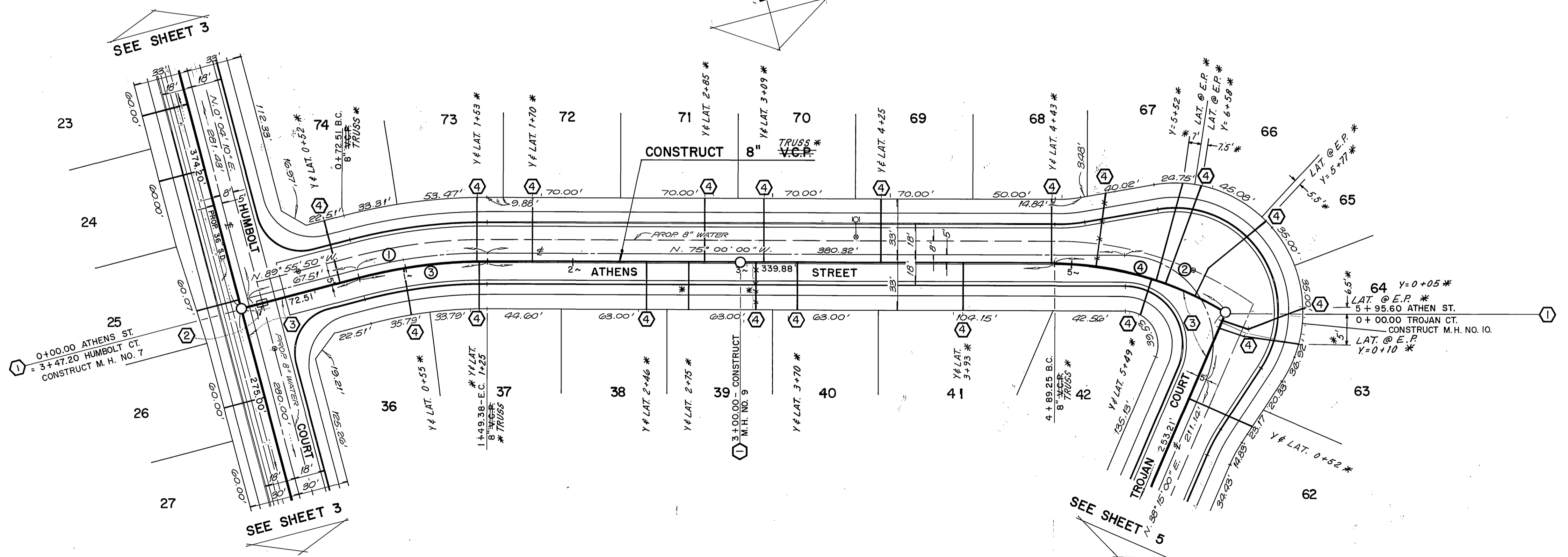
- CONSTRUCTION NOTES**
- ① CONSTRUCT MANHOLE PER CITY OF RIVERSIDE STD. NO. 500
 - ② SEWER/WATER LINE ENCASEMENT SHALL CONFORM TO THE CITY WATER DIVISION STANDARDS CWD-022 AND CWD-023.
 - ③ CONSTRUCT 8" ^{TRUSS} V.C.P. SEWER MAIN W/PIPE BEDDING PER C/R STD. NO. 452, CASE II.
 - ④ CONSTRUCT 4" ^{A.B.S.} V.C.P. SEWER LATERAL PER CITY OF RIVERSIDE STD. NO. 562
 - ⑤ REMOVE PLUG; JOIN EXISTING 8" V.C.P. SEWER MAIN.
 - ⑥ ALL MANHOLES DEEPER THAN 12' TO THE SHELF SHALL BE EQUIPPED WITH A "SAFE-T-CLIMB" AS MANUFACTURED BY NORTH CONSUMER SAFETY PROD. OR APPROVED EQUAL.
BENCHMARK: H8-B FOUND P.K. NAIL AND CITY ENGINEER TAG IN NORTH CURB OF HIGHWAY 395 FRONTAGE ROAD AT ENTRANCE TO SHERIFF'S ACADEMY. ELEV. = 1258.074'

	<p>JN BEELER LAND SURVEYING AND MAPPING 8104 RIVERSIDE AVENUE SUITE B RIVERSIDE, CA 92506 (714)982-2216</p>	<p>CITY OF RIVERSIDE PUBLIC WORKS DEPARTMENT</p>	<p>SEWER PLAN AND PROFILE TRACT 24684</p>
<p>CITY OF RIVERSIDE WATER SYSTEM APPROVED BY: <i>Richard L. Dordick</i> DATE: 4-4-90</p>	<p>PLANS PREPARED UNDER THE SUPERVISION OF: <i>Frank Jordan</i> DATE: 12-20-89 R.C.E. 27983 EXP. 3/30/90</p>	<p>APPROVED BY: <i>Ray Bell</i> DATE: 6/20/90 PUBLIC WORKS DIRECTOR</p>	<p>ACCOUNT NO. S-1574 SHEET 3 OF 6 88-259-03</p>



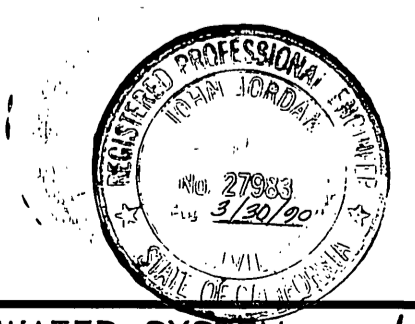
CURVE DATA

① Δ = 14 55' 50"	③ Δ = 14 55' 50"
R = 300'	R = 295'
L = 78.18'	L = 76.87'
T = 39.31'	T = 38.66'
② Δ = 113 15' 00"	④ Δ = 31 14' 45"
R = 53'	R = 195'
L = 104.76'	L = 106.34'
T = 80.45'	T = 54.53'



CONSTRUCTION NOTES

- ① CONSTRUCT MANHOLE PER CITY OF RIVERSIDE STD. NO. 500
- ② SEWER/WATER LINE ENCASUREMENT SHALL CONFORM TO THE CITY WATER DIVISION STANDARDS CWD-022 AND CWD-023.
- ③ CONSTRUCT 8" TRUSS* SEWER MAIN W/PIPE BEDDING PER C/R STD. NO. 452, CASE II
- ④ CONSTRUCT 4" TRUSS* SEWER LATERAL PER CITY OF RIVERSIDE STD. NO. 562
- ⑤ REMOVE PLUG; JOIN EXISTING 8" V.C.P. SEWER MAIN.
- ⑥ ALL MANHOLES DEEPER THAN 12' TO THE SHELF SHALL BE EQUIPPED WITH A "SAFE-T-CLIMB" AS MANUFACTURED BY NORTH CONSUMER SAFETY PROD OR APPR. EQUAL. BENCHMARK: HS-B FOUND P.K. NAIL AND CITY ENGINEER TAG IN NORTH CURB OF HIGHWAY 395 FRONTAGE ROAD AT ENTRANCE TO SHERIFF'S ACADEMY. ELEV. = 1258.074'



CITY OF RIVERSIDE WATER SYSTEM

APPROVED BY: *Rickard J. Deleh* DATE: 4-4-90

J. JORDAN LAND SURVEYING AND MAPPING
6104 RIVERSIDE AVENUE SUITE B
RIVERSIDE, CA 92506
(714)682-2216

PLANS PREPARED UNDER THE SUPERVISION OF:
J. JORDAN DATE: 11-20-89
R.C.E. 27283 EXP. 3/30/90

DESIGNED BY: *E.B.* DRAWN BY: *E.B.* CHECKED BY: *J.C.J.*

CITY OF RIVERSIDE
PUBLIC WORKS DEPARTMENT

APPROVED BY: *Bary Red*
DATE: 6/20/90

SEWER PLAN AND PROFILE

TRACT 24684

HORIZ. SCALE: 1" = 40' VERT. SCALE: 1" = 4'

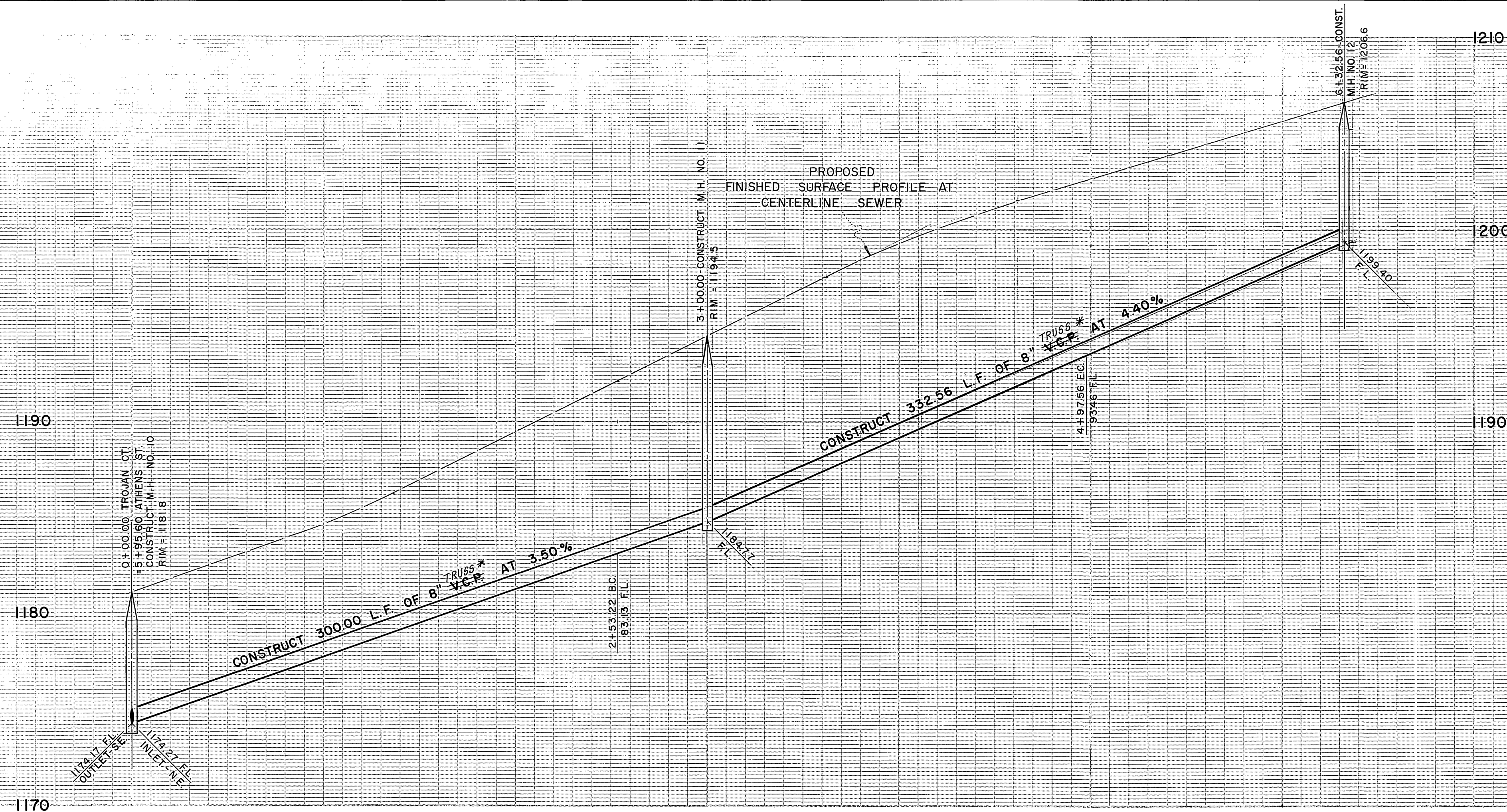
ACCOUNT NO. S-1574

SHEET 4 OF 6

88-250-03

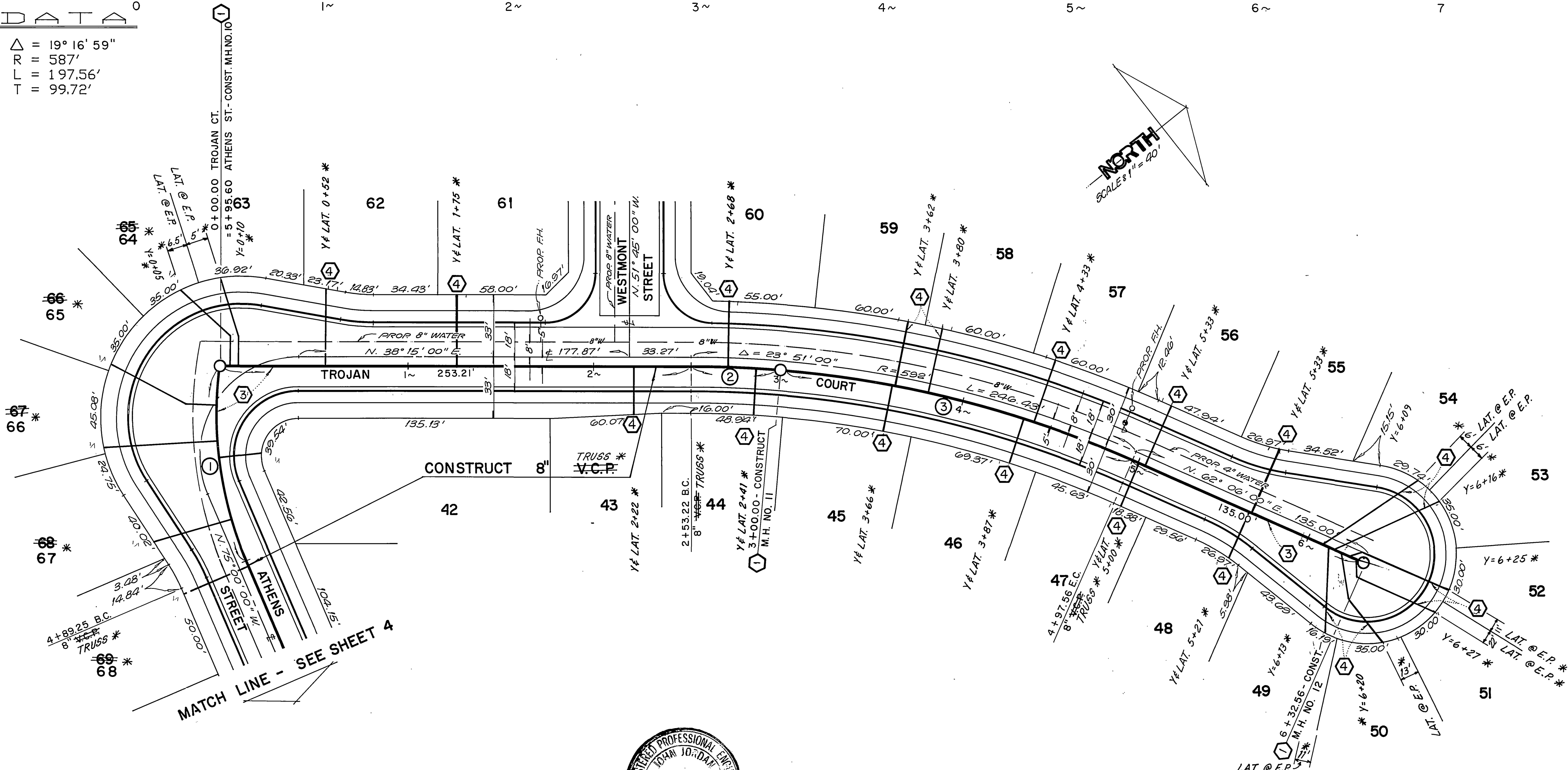
* AS BUILT 2-26-91 JH

INDEXED 7-27-90 JH



CURVE DATA

- ① Δ = 31° 14' 45"
- ① R = 195'
- ① L = 106.34'
- ① T = 54.53'
- ② Δ = 19° 16' 59"
- ② R = 587'
- ② L = 197.56'
- ② T = 99.72'
- ③ Δ = 04° 34' 01"
- ③ R = 587'
- ③ L = 46.79'
- ③ T = 23.41'



CONSTRUCTION NOTES

- ① CONSTRUCT MANHOLE PER CITY OF RIVERSIDE STD. NO. 500
 - ② SEWER/WATER LINE ENCASEMENT SHALL CONFORM TO THE CITY WATER DIVISION STANDARDS CWD-022 AND CWD-023.
 - ③ CONSTRUCT 8" ^{TRUSS} V.C.P. SEWER MAIN W/PIPE BEDDING PER C/R STD. NO. 452, CASE II
 - ④ CONSTRUCT 4" ^{A.B.S.} V.C.P. SEWER LATERAL PER CITY OF RIVERSIDE STD. NO. 562
 - ⑤ REMOVE PLUG; JOIN EXISTING 8" V.C.P. SEWER MAIN.
 - ⑥ ALL MANHOLES DEEPER THAN 12' TO THE SHELF SHALL BE EQUIPPED WITH A "SAFE-T-CLIMB" AS MANUFACTURED BY NORTH CONSUMER SAFETY PROD. OR APPROVED EQUAL.
- BENCHMARK: H8-B FOUND P.K. NAIL AND CITY ENGINEER TAG IN NORTH CURB OF HIGHWAY 395 FRONTAGE ROAD AT ENTRANCE TO SHERIFF'S ACADEMY. ELEV. = 1258.074'



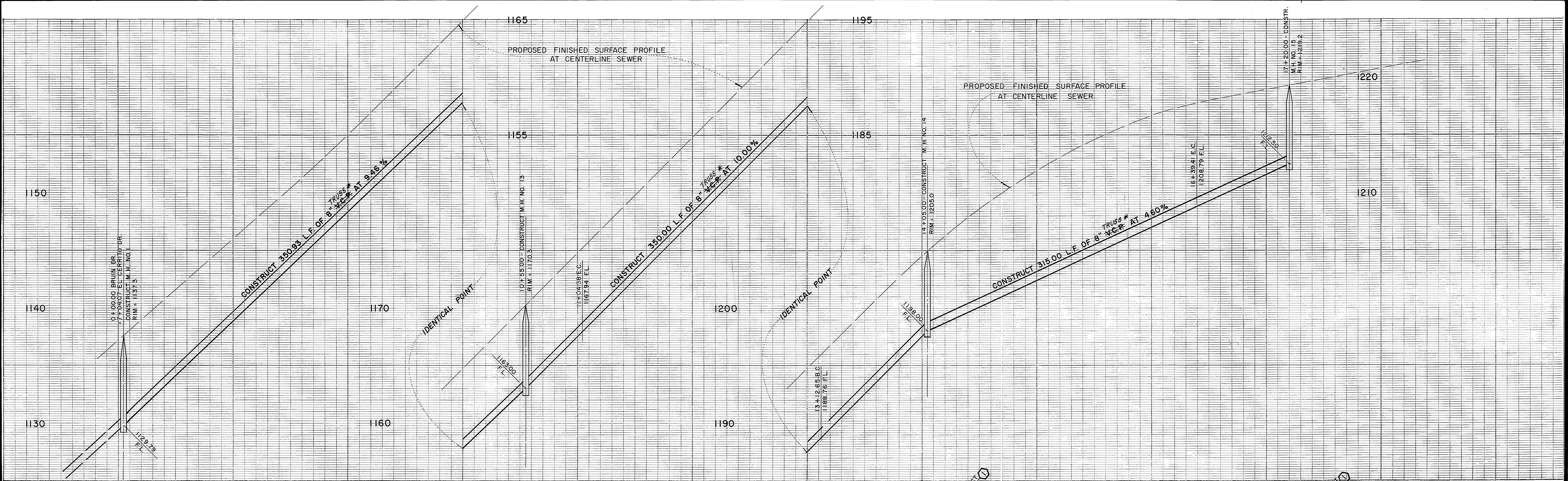
CITY OF RIVERSIDE WATER SYSTEM
 APPROVED BY: *Richard J. Deibel* DATE: 4-4-90
 PLANS PREPARED UNDER THE SUPERVISION OF: *John Deibel* DATE: 10-20-89
 R.C.E. 27983 EXP. 3/30/90

JN DEIBEL
 LAND SURVEYING AND MAPPING
 6104 RIVERSIDE AVENUE SUITE B
 RIVERSIDE, CA 92506
 (714)682-2216

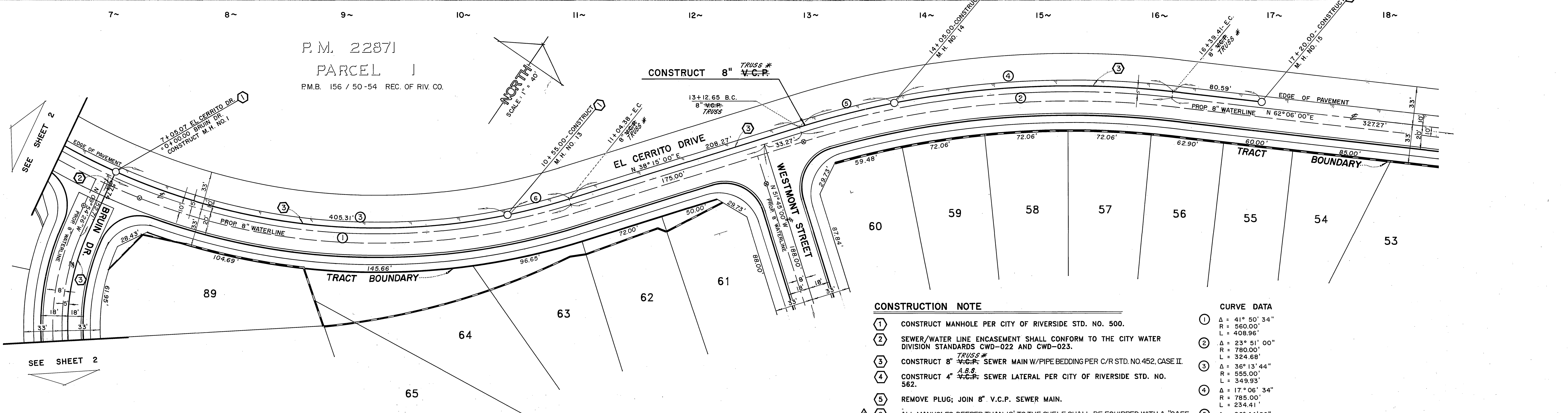
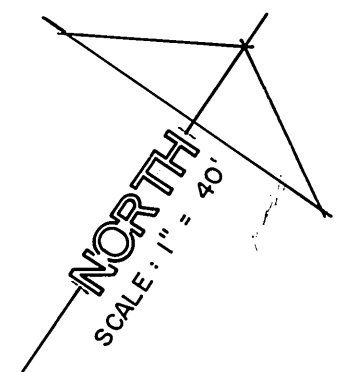
MARK	REVISIONS	APPR. DATE
1	ADD SAFE-T-CLIMB FOR M.H. OVER 12' DEEP	
2		
3		
4		
5		

CITY OF RIVERSIDE
 PUBLIC WORKS DEPARTMENT
 APPROVED BY: *John Deibel* DATE: 6/15/90
 PRINCIPAL ENGINEER
 PARK DEPARTMENT
 TRAFFIC DIVISION
 CHIEF P.W. ENGINEER
 DATE: 6/20/90

SEWER PLAN AND PROFILE		ACCOUNT NO.
TRACT 24684		S-1574
HORIZ. SCALE: 1" = 40'		VERT. SCALE: 1" = 4'
SHEET 5 OF 6		88-259-03



P.M. 22871
 PARCEL J
 P.M.B. 156 / 50-54 REC. OF RIV. CO.



- CONSTRUCTION NOTE**
- ① CONSTRUCT MANHOLE PER CITY OF RIVERSIDE STD. NO. 500.
 - ② SEWER/WATER LINE ENCASEMENT SHALL CONFORM TO THE CITY WATER DIVISION STANDARDS CWD-022 AND CWD-023.
 - ③ CONSTRUCT 8" ^{TRUSS #} V.C.P. SEWER MAIN W/PIPE BEDDING PER C/R STD. NO.452, CASE II.
 - ④ CONSTRUCT 4" ^{A.B.S.} V.C.P. SEWER LATERAL PER CITY OF RIVERSIDE STD. NO. 562.
 - ⑤ REMOVE PLUG; JOIN 8" V.C.P. SEWER MAIN.
 - ⑥ ALL MANHOLES DEEPER THAN 12' TO THE SHELF SHALL BE EQUIPPED WITH A "SAFE-T-CLIMB" AS MANUFACTURED BY NORTH CONSUMER SAFETY PROD. OR APPROVED BENCHMARK: HB-B FOUND P.K. HALL AND CITY ENGINEER TAG EQUAL. IN NORTH CURB OF HIGHWAY 395 FRONTAGE ROAD AT ENTRANCE TO SHERIFF'S ACADEMY. ELEV. = 1258.074'

CURVE DATA

①	Δ = 41° 50' 34"
	R = 560.00'
	L = 408.96'
②	Δ = 23° 51' 00"
	R = 780.00'
	L = 324.68'
③	Δ = 36° 13' 44"
	R = 555.00'
	L = 349.93'
④	Δ = 17° 06' 34"
	R = 785.00'
	L = 234.41'
⑤	Δ = 06° 44' 26"
	R = 785.00'
	L = 92.35'
⑥	Δ = 05° 05' 52"
	R = 555.00'
	L = 49.38'



J.W. BEELER LAND SURVEYING AND MAPPING
 6104 RIVERSIDE AVENUE SUITE B
 RIVERSIDE, CA 92506
 (714)882-2216

PLANS PREPARED UNDER THE SUPERVISION OF:
 Richard J. Diebel 4-4-90 DATE
 R.C.E. 27983 EXP. 3/30/90

CITY OF RIVERSIDE
 PUBLIC WORKS DEPARTMENT

APPROVED BY: [Signature] DATE: 6/20/90
 PRINCIPAL ENGINEER
 PARK DEPARTMENT
 TRAFFIC DIVISION
 CHIEF P.W. ENGINEER

SEWER PLAN AND PROFILE
 TRACT 24684

ACCOUNT NO. S-1574
 SHEET 6 OF 6

HORIZ. SCALE: 1" = 40' VERT. SCALE: 1" = 4'