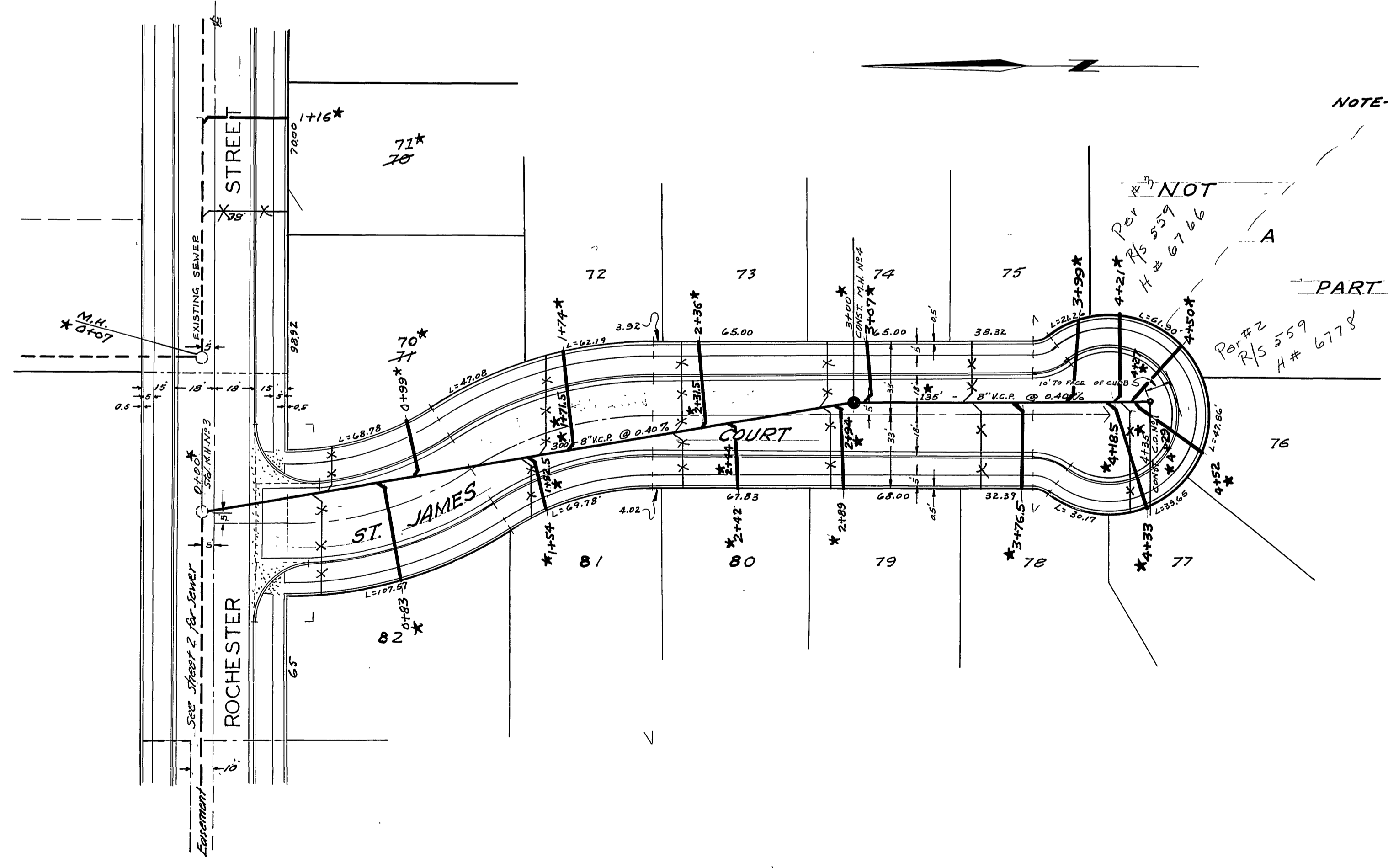


B.M. Chiseled, sq. on W. Curb of
 Capistrano Way in front of H. No. 6735
 Elev. = 781.92



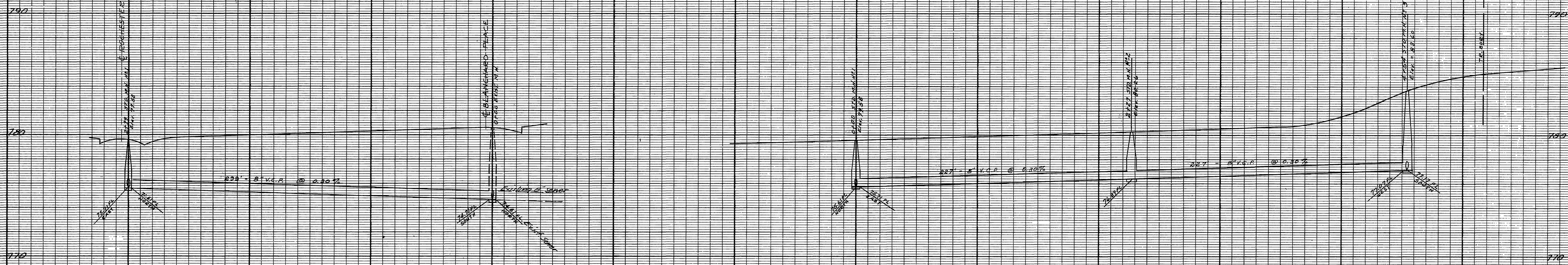
NOTE - Laterals to be located in the field
 Std. M.H. refers to City of Riverside
 Std. No. 550.
 Std. CO. refers to City of Riverside
 Std. No. 580

SEWER
 ST. JAMES COURT

MONTCLAIR PARK UNIT No. 3
 1" = 40'

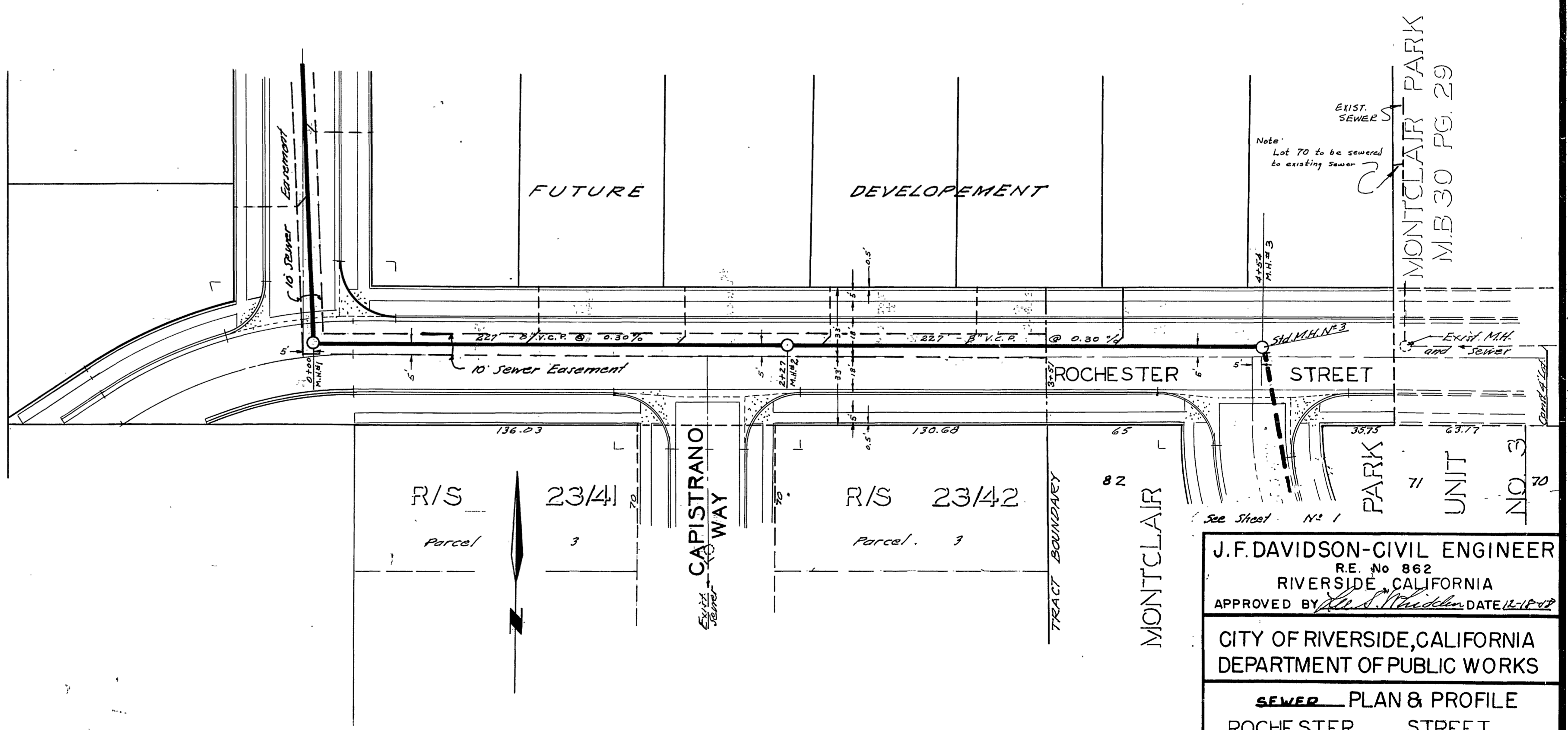
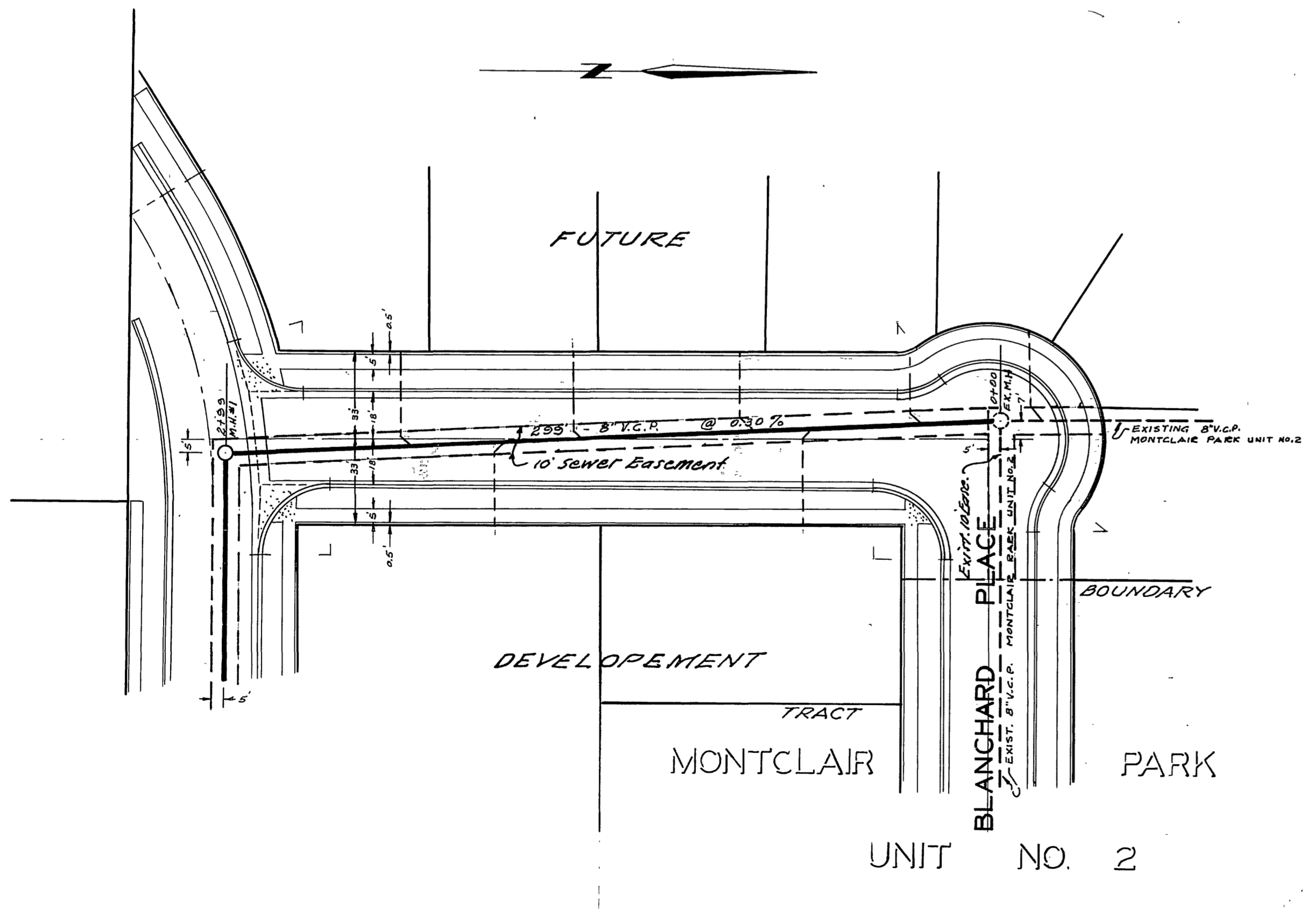
WEA
 wdg
 E.B. 628
 J. Martinech
 April 7-1959
S-158
 1 2

* = "As Built" 7-13-59 H.B. All



NOTE - Laterals to be located in the field
 Std. M.H. refers to City of Riverside
 Std. No. 500.
 Wyes for Future Lots 71 to 75 incl. to be
 set at minimum grade.

B.M. Chiseled on W. curb of
 Capistrano Way in front of No. 11 6733
 Elev. = 761.92



J.F. DAVIDSON-CIVIL ENGINEER
 R.E. No. 862
 RIVERSIDE, CALIFORNIA
 APPROVED BY *[Signature]* DATE *[Date]*

CITY OF RIVERSIDE, CALIFORNIA
 DEPARTMENT OF PUBLIC WORKS

SEWER PLAN & PROFILE
 ROCHESTER STREET
 AND EASEMENTS
 MONTCLAIR PARK UNIT NO. 3
 HORIZ. SCALE 1"=40' VERT. SCALE 1"=4'

APPROVED BY
 Director of Public Works
 DATE
 NO. **S-158**
 SHEET 2 OF 2