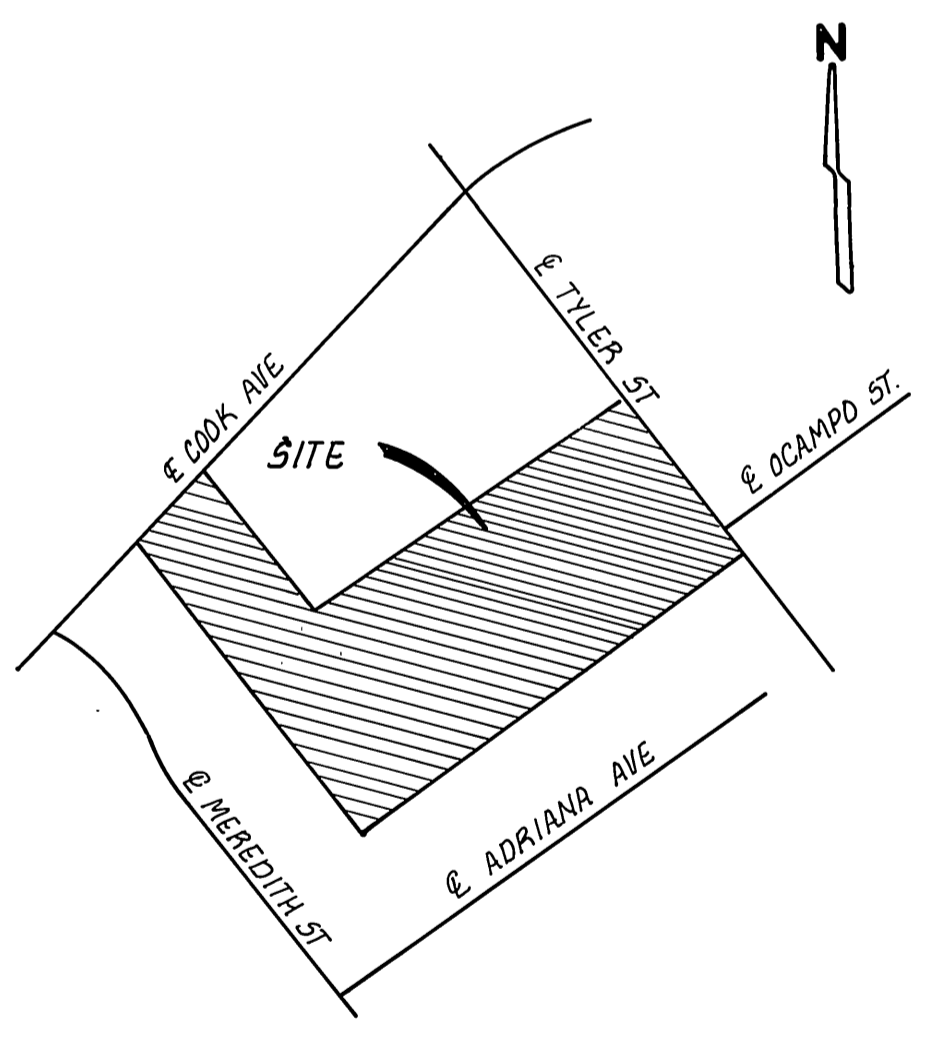


SEWER NOTES

1. IT SHALL BE THE RESPONSIBILITY OF THE CONTRACTOR TO CLEAR THE RIGHT-OF-WAY IN ACCORDANCE WITH THE PROVISIONS OF LAW AS IT AFFECTS EACH UTILITY INCLUDING IRRIGATION LINES AND APPURTENANCES AND AT NO COST TO THE CITY.
2. CONSTRUCTION SHALL BE IN ACCORDANCE WITH THE CITY OF RIVERSIDE DEPARTMENT OF PUBLIC WORKS, STANDARD DRAWINGS, STANDARD DRAWING NO. 10 AND THE STANDARD SPECIFICATIONS FOR PUBLIC WORKS CONSTRUCTION (CURRENT EDITION).
3. THE PRIVATE ENGINEER SIGNING THESE PLANS IS RESPONSIBLE FOR ASSURING THE ACCURACY AND ACCEPTABILITY OF THE WORK HEREON. IN THE EVENT OF DISCREPANCIES ARISING DURING CONSTRUCTION, THE PRIVATE ENGINEER SHALL BE RESPONSIBLE FOR DETERMINING AN ACCEPTABLE SOLUTION AND REVISING THE PLANS FOR APPROVAL BY THE CITY.
4. QUANTITIES SHOWN ARE FOR INFORMATION ONLY AND THE CITY OF RIVERSIDE IS NOT RESPONSIBLE FOR THEIR ACCURACY.
5. THE DEVELOPER SHALL BE RESPONSIBLE FOR PRESERVING OR RE-ESTABLISHING AND REFERENCING SURVEY MONUMENTS DESTROYED, DISTURBED, OR BURIED AS A RESULT OF CONSTRUCTION SHOWN HEREON.
6. ALL FLAGGED ELEVATIONS SHALL BE STAKED IN THE FIELD BY THE PRIVATE ENGINEER.
7. THE CONTRACTOR SHALL CALL IN A LOCATION REQUEST TO UNDERGROUND SERVICE ALERT (USA), PHONE NO. 1-800-422-4133, TWO WORKING DAYS BEFORE DIGGING. NO CONSTRUCTION PERMIT WILL BE ISSUED BY THE PUBLIC WORKS DEPARTMENT INVOLVING EXCAVATION FOR UNDERGROUND FACILITIES UNLESS THE APPLICANT HAS BEEN PROVIDED AN UNQUIRY IDENTIFICATION NUMBER BY U.S.A..
8. CONTRACTOR IS TO VERIFY EXISTING SEWER ELEVATION PRIOR TO CONSTRUCTION.
9. LOCATION OF LATERALS TO BE DETERMINED IN THE FIELD AT THE DIRECTION OF THE OWNER. AVOID CONFLICT WITH PROPOSED AND/OR EXISTING FACILITIES.
10. NO FINISHED FLOOR ELEVATION SHALL BE LESS THAN 4' ABOVE THE SEWER FLOW LINE AT POINT OF CONNECTION WITHOUT HAVING A PROPER BACKWATER VALVE INSTALLED IN THE LATERAL.
11. THE SEWER CONTRACTOR SHALL ADJUST MANHOLES TO FINAL GRADE AFTER PAVING IS COMPLETED.
12. A PLUG SHALL BE INSTALLED AND WILL REMAIN IN PLACE WHERE THE NEW SEWER CONNECTS WITH THE EXISTING SEWER UNTIL THE NEW SEWER IS ACCEPTED BY THE CITY.



VICINITY MAP

LEGEND

TC	INDICATES TOP OF CURB
LP	INDICATES LOW POINT
HP	INDICATES HIGH POINT
---	INDICATES EXISTING SURFACE
---	CONSTRUCT SEWER CROSSING PER C.I.W.D.-022



CITY OF RIVERSIDE, WATER
 APPR. BY: [Signature] DATE 6/18/90

BENCH MARK:
 RK MAIL CITY ENGINEER TAG IN S.W. CORNER OF TYLER ST. SE. LV OF OCAMPA ST.
 F3-K ELEV. = 754.98

WEBB, HAWKINS & ASSOCIATES
 CIVIL ENGINEERS • LAND SURVEYORS
 28481 Rancho California Road • Suite 108
 Rancho California, California 92530 • (714) 676-2443

APPROVED BY: [Signature]
 REGISTERED CIVIL ENGINEER NO. 44341
 DATE: 12/28/89 REGISTRATION EXPIRES 6-30-93

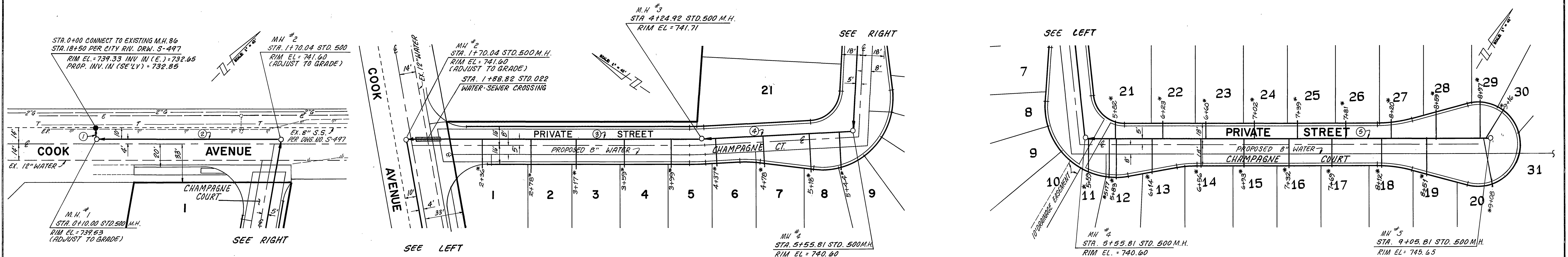
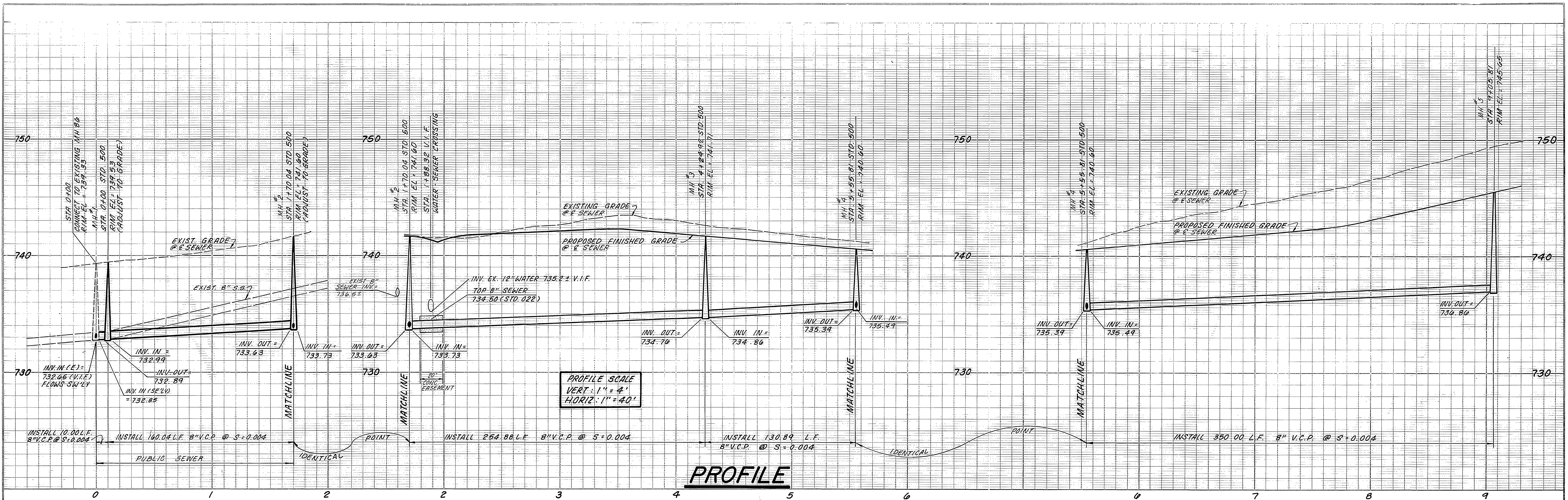
MARK	REVISIONS	APPR.	DATE

CITY OF RIVERSIDE, CALIFORNIA
PUBLIC WORKS DEPARTMENT

APPROVED BY: [Signature] DATE 6/22/90
 PRINCIPAL ENGINEER
 PARK DEPARTMENT
 TRAFFIC DIVISION
 CHIEF PUB. WKS. ENGR.

TRACT NO. 24843
COOK AVE & CHAMPAGNE CT
(PRIVATE STREET)
SEWER PLAN

ACCOUNT NO. AS BUILT 5/10/95 RIM
 DRAWING NUMBER
S1592
 SHEET 1 OF 2



PLAN

NOTE: SEE SHEET 1 OF 2 FOR LATERAL LOCATIONS PIPE DISTANCE ARE FROM 6' OF E OF MANHOLE

SEWER LINE DATA		
NO.	BEARING	DIST.
1.	S. 44° 25' 07" E.	10.00'
2.	N. 45° 34' 53" E.	160.04'
3.	S. 34° 19' 46" E.	254.88'
4.	S. 37° 16' 07" E.	130.89'
5.	N. 58° 40' 14" E.	350.00'



BENCH MARK:
PK. NAIL & CITY ENGINEER TAG IN SW 1/4 CURB OF TYLER ST. SE. 1/4 OF OCAMPO ST. F.3-K ELEV. = 754.98

WEBB, HAWKINS & ASSOCIATES
CIVIL ENGINEERS & LAND SURVEYORS
28481 Rancho California Road • Suite 106
Rancho California, California 92380 • (714) 676-2443

APPROVED BY: *William D. Keller*
REGISTERED CIVIL ENGINEER NO. 44341
REGISTRATION EXPIRES 6-30-93

CITY OF RIVERSIDE, CALIFORNIA
PUBLIC WORKS DEPARTMENT

APPROVED BY: *Dary Bal*
PRINCIPAL ENGINEER
TRAFFIC DIVISION
DATE: 6/22/90

TRACT NO. 24843
COOK AVE & CHAMPAGNE CT
(PRIVATE STREET)
SEWER PLAN & PROFILE

ACCOUNT NO. _____
DRAWING NUMBER
S-1592
SHEET **2** OF **2**

CITY OF RIVERSIDE, WATER
APPR. BY: *William D. Keller* DATE: 6-18-90

MARK _____
DESIGNED BY: *SS* DRAWN BY: *SS* CHECKED BY: *SS*

SCALE: HORIZ.: 1" = 40'; VERT.: 1" = 4'

INDEXED 7-6-90 LHM