

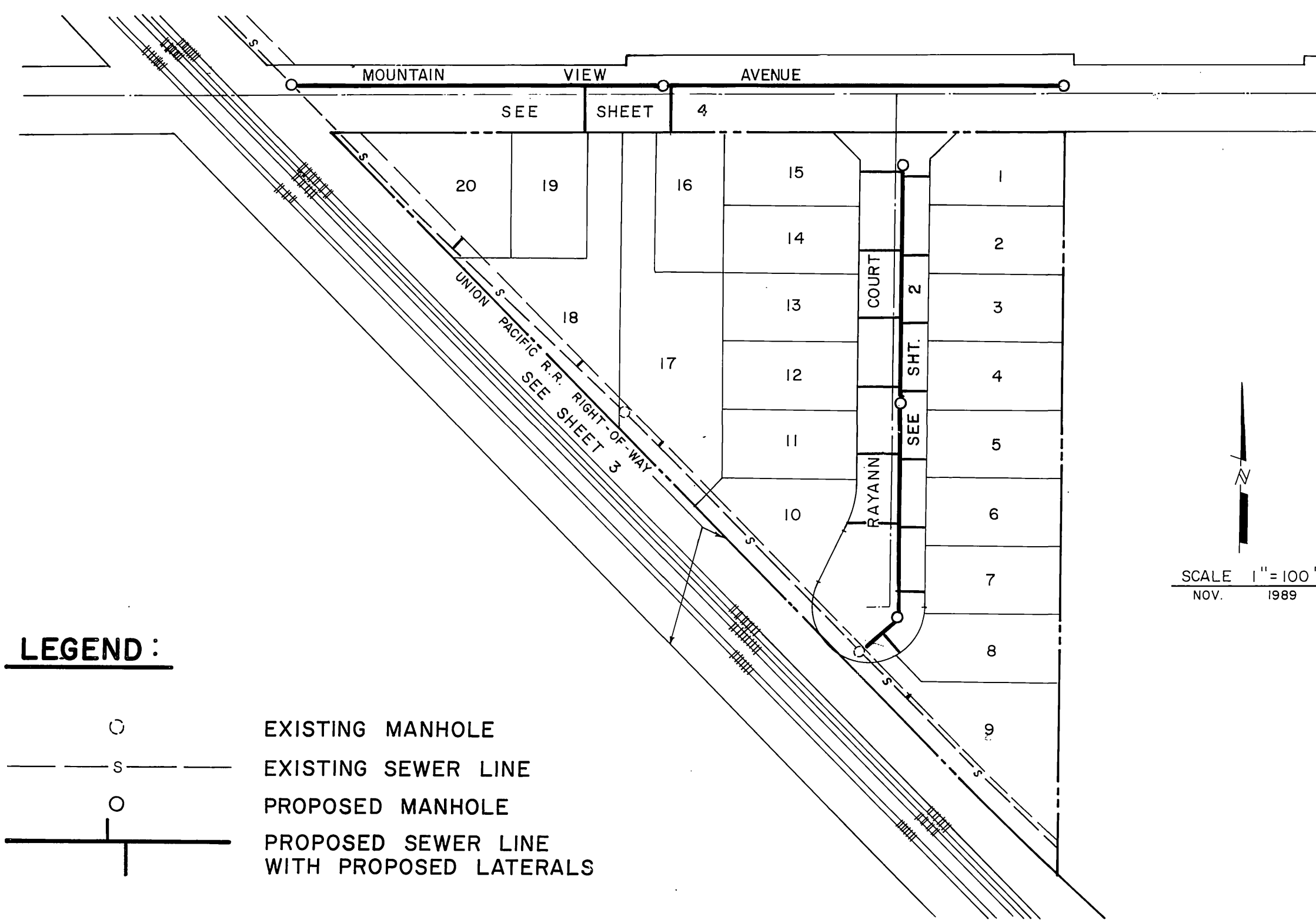
# PLANS FOR THE IMPROVEMENT OF TRACT NO. 24892

# SEWER

### GENERAL NOTES

1. IT SHALL BE THE RESPONSIBILITY OF THE CONTRACTOR TO CLEAR THE RIGHT OF WAY IN ACCORDANCE WITH THE PROVISIONS OF LAW AS IT AFFECTS EACH UTILITY INCLUDING IRRIGATION LINES AND APPURTENANCES AND AT NO COST TO THE CITY.
2. CONSTRUCTION SHALL BE IN ACCORDANCE WITH THE CITY OF RIVERSIDE DEPARTMENT OF PUBLIC WORKS STANDARD DRAWINGS, STANDARD DRAWING NO. 10 AND THE STANDARD SPECIFICATIONS FOR PUBLIC WORKS CONSTRUCTION, CURRENT EDITION.
3. THE PRIVATE ENGINEER SIGNING THESE PLANS IS RESPONSIBLE FOR ASSURING THE ACCURACY AND ACCEPTIBILITY OF THE WORK HEREON. IN THE EVENT OF DISCREPANCIES ARISING DURING CONSTRUCTION, THE PRIVATE ENGINEER SHALL BE RESPONSIBLE FOR DETERMINING AN ACCEPTABLE SOLUTION AND REVISING THE PLANS FOR APPROVAL BY THE CITY.
4. QUANTITIES SHOWN ARE FOR INFORMATION ONLY AND THE CITY OF RIVERSIDE IS NOT RESPONSIBLE FOR THEIR ACCURACY.
5. THE DEVELOPER SHALL BE RESPONSIBLE FOR PRESERVING OR RE-ESTABLISHING AND REFERENCING SURVEY MONUMENTS DESTROYED, DISTURBED OR BURIED AS A RESULT OF CONSTRUCTION SHOWN HEREON.
6. ALL FLAGGED ELEVATIONS SHALL BE STAKED IN THE FIELD BY THE PRIVATE ENGINEER.
7. THE CONTRACTOR SHALL CALL IN A LOCATION REQUEST TO UNDERGROUND SERVICE ALERT (USA), PHONE NO. 1-800-422-4133, TWO WORKING DAYS BEFORE DIGGING. NO CONSTRUCTION PERMIT WILL BE ISSUED BY THE PUBLIC DEPARTMENT INVOLVING EXCAVATION FOR UNDERGROUND FACILITIES UNLESS THE APPLICANT HAS BEEN PROVIDED AN INQUIRY IDENTIFICATION NUMBER BY (USA).
8. CONTRACTOR IS TO VERIFY EXISTING SEWER ELEVATION PRIOR TO CONSTRUCTION.
9. LOCATION OF LATERALS TO BE DETERMINED IN THE FIELD AT THE DIRECTION OF THE OWNER. AVOID CONFLICT WITH PROPOSED AND/OR EXISTING FACILITIES.
10. NO FINISHED FLOOR ELEVATION SHALL BE LESS THAN 4' ABOVE THE SEWER FLOW LINE AT POINT OF CONNECTION WITHOUT HAVING A PROPER BACKWATER VALVE INSTALLED IN THE LATERAL.
11. A PLUG SHALL BE INSTALLED AND WILL REMAIN IN PLACE WHERE THE NEW SEWER CONNECTS WITH THE EXISTING SEWER UNTIL THE NEW SEWER IS ACCEPTED BY THE CITY.
12. THE SEWER CONTRACTOR SHALL ADJUST MANHOLES TO FINAL GRADE AFTER PAVING IS COMPLETED.

### INDEX MAP



### LEGEND:

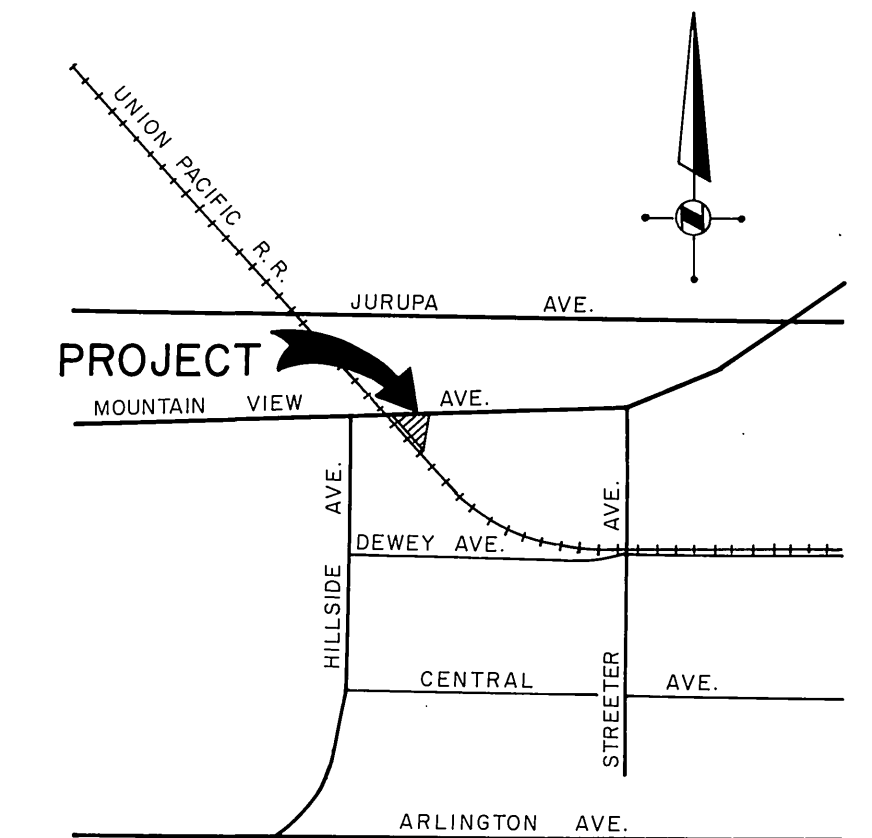
- EXISTING MANHOLE
- EXISTING SEWER LINE
- PROPOSED MANHOLE
- PROPOSED SEWER LINE WITH PROPOSED LATERALS

### ESTIMATE OF QUANTITIES

ITEM	UNIT	AMOUNT
RECONSTRUCT M.H. BOTTOM	EA.	1
SEWER CONNECTION	EA.	4
8" V.C.P.	L.F.	1,123
4" LATERAL	L.F.	609
MANHOLE	EA.	6
ADJUST M.H. TO GRADE	EA.	2
SEWER MOVE-IN	L.S.	1

### CONSTRUCTION NOTES

- ① 8" V.C.P. SEWER MAIN
- ② SEWER MANHOLE PER STD. DWG. 500
- ③ 4" V.C.P. LATERAL PER STD. DWG. 562



### VICINITY MAP

N. T. S.

### BENCH MARK

U.S.G.S. B.M. H-1144 A BRASS DISC STAMPED H-1144 1961 IN TOP OF HEADWALL 60' NW. OF UNION PACIFIC CROSSING AT JURUPA ELEV. = 777.827

### Underground Service Alert

Call: TOLL FREE  
1-800  
422-4133  
TWO WORKING DAYS BEFORE YOU DIG

CENCOM CABLE TELEVISION CO.

APPROVED BY: *[Signature]* DATE: 4-2-90



PACIFIC TELEPHONE CO.  
APPROVED BY: *[Signature]* DATE: 3-21-90

CITY WATER DEPARTMENT  
APPROVED BY: *[Signature]* DATE: 2-25-90

SOUTHERN CALIFORNIA GAS CO.  
APPROVED BY: *[Signature]* DATE: 3-21-90

CITY ELECTRICAL DEPARTMENT  
APPROVED BY: *[Signature]* DATE: 3-21-90

ENGINEER OF WORK  
GEORGE L. BENTON  
R.C.E. 14594  
EXP. DATE 3/31/93  
DATE: 12-6-89

ACE ENGINEERING COMPANY  
PLANNERS • ENGINEERS • SURVEYORS  
29377 RANCHO CALIFORNIA RD., SUITE 104  
TEMECULA, CALIFORNIA 92390  
TELEPHONE (714) 699-9058

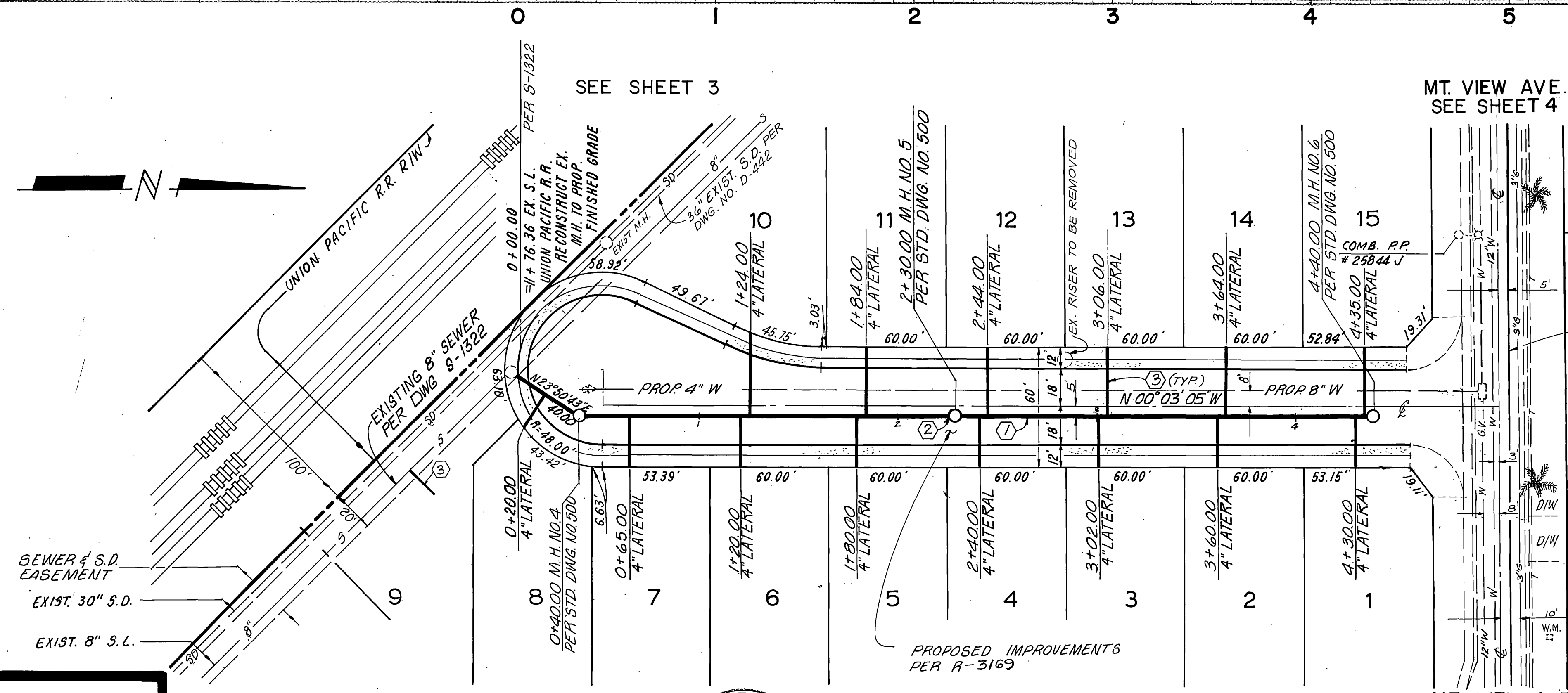
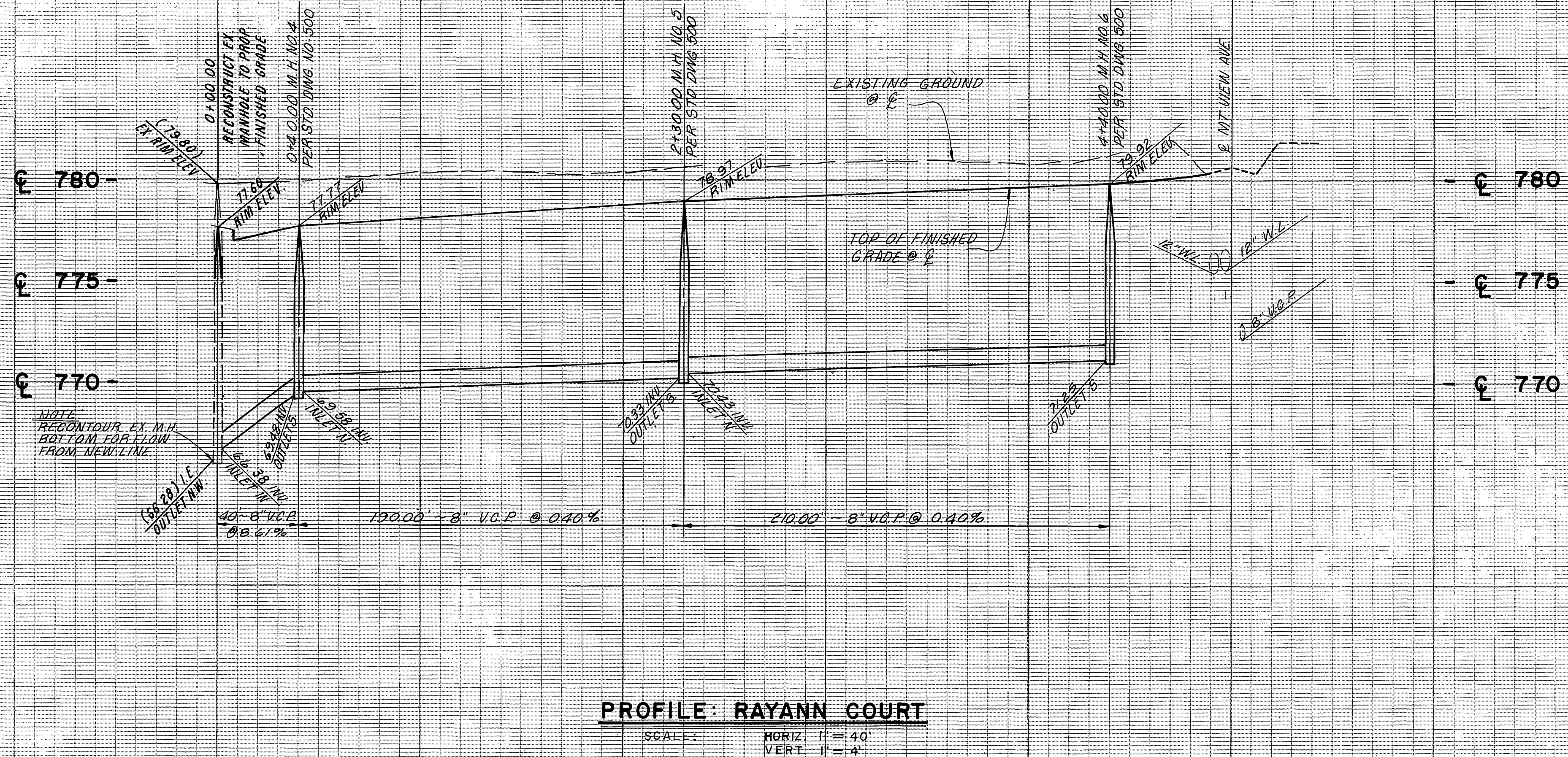
MARK REVISIONS APPR. DATE  
DESIGNED BY: D.L.S. DRAWN BY: E.L.B. CHECKED BY: M.W.M.

CITY OF RIVERSIDE  
PUBLIC WORKS DEPARTMENT  
APPROVED BY: *[Signature]* DATE: 8/9/90  
PUBLIC WORKS DIRECTOR

SEWER IMPROVEMENT PLANS  
TRACT 24892  
MOUNTAIN VIEW AVE.  
&  
RAYANN COURT  
HORIZ. SCALE: AS SHOWN

AS BUILT 3/22/93 EJM  
ACCOUNT NO. 115-1  
S-1593  
SHEET 1 OF 4





- CONSTRUCTION NOTES**
- ① 8" V.C.P. SEWER MAIN
  - ② SEWER MANHOLE PER STD. DWG. 500
  - ③ 4" V.C.P. LATERAL PER STD. DWG. 562

**BENCH MARK**  
 U.S.G.S. B.M. H-1144 A BRASS DISC STAMPED  
 H-1144 IN TOP OF HEADWALL 60' N.W. OF  
 UNION PACIFIC CROSSING AT JURUPA, ELEV.  
 = 777.827.

**Underground Service Alert**  
 Call: TOLL FREE  
 1-800-422-4133  
 TWO WORKING DAYS BEFORE YOU DIG

CENCOM CABLE TELEVISION CO.  
 APPROVED BY: *[Signature]* DATE: 4-2-90



PACIFIC TELEPHONE CO. APPROVED BY: <i>[Signature]</i> DATE: 3/1/90	SOUTHERN CALIFORNIA GAS CO. APPROVED BY: <i>[Signature]</i> DATE: 3-21-90
CITY WATER DEPARTMENT APPROVED BY: <i>[Signature]</i> DATE: 2-25-90	CITY ELECTRICAL DEPARTMENT APPROVED BY: <i>[Signature]</i> DATE: 5/22/90

ENGINEER OF WORK  
 GEORGE L. BENTON  
 R.C.E. 14594  
 EXP. DATE 3/31/93  
 DATE: 12-6-89

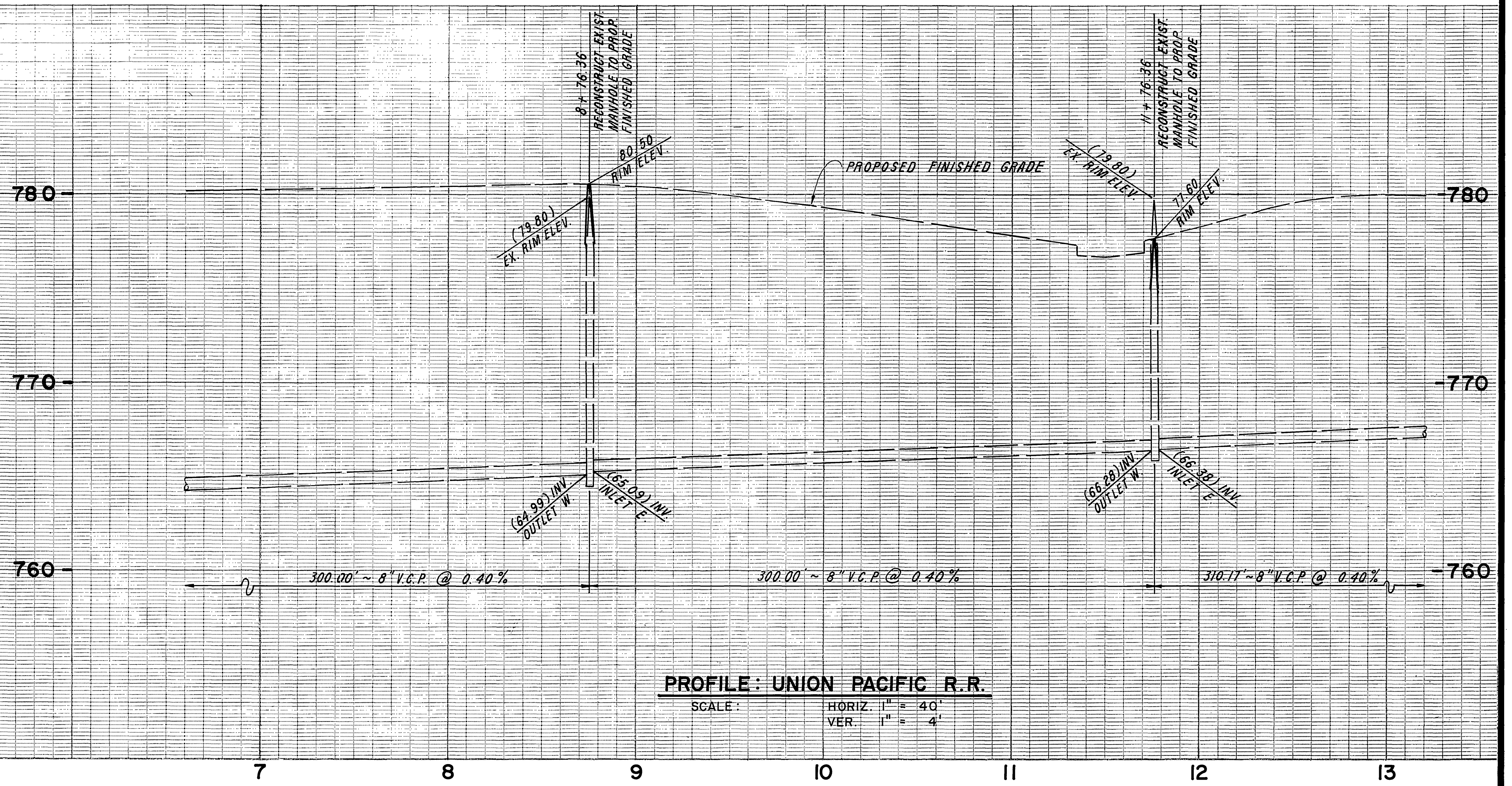
**ACE ENGINEERING COMPANY**  
 PLANNERS • ENGINEERS • SURVEYORS  
 29377 RANCHO CALIFORNIA RD., SUITE 104  
 TEMECULA, CALIFORNIA 92390  
 TELEPHONE (714) 699-9058

MARK	REVISIONS	APPR. DATE
DESIGNED BY: D.L.S.	DRAWN BY: T.P.F.	CHECKED BY: M.W.N.P.

**CITY OF RIVERSIDE**  
 PUBLIC WORKS DEPARTMENT  
 APPROVED BY: *[Signature]* DATE: 8/1/90  
 PRINCIPAL ENGINEER  
 PARK DEPARTMENT  
 TRAFFIC DIVISION  
 CHIEF P.W. ENGINEER

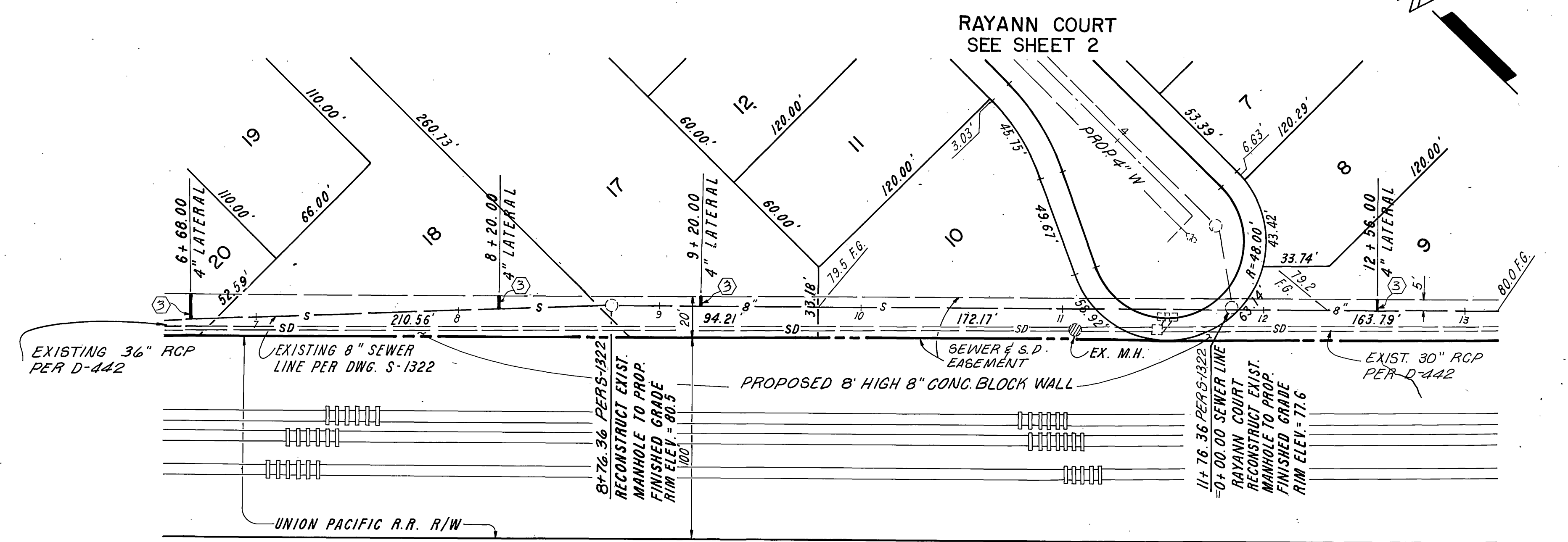
SEWER IMPROVEMENT PLAN TRACT 24892 RAYANN COURT	ACCOUNT NO. 115-1 <b>S-1593</b> SHEET 2 OF 4
HORIZ. SCALE: 1" = 40' VERT. SCALE: 1" = 4'	





**CONSTRUCTION NOTES**

- ① 8" V.C.P. SEWER MAIN
- ② SEWER MANHOLE PER STD. DWG. 500
- ③ 4" V.C.P. LATERAL PER STD. DWG. 562.



**PLAN: UNION PACIFIC R.R.**

SCALE: 1" = 40'

**BENCH MARK**  
 U.S.G.S. B.M. H-1144 A BRASS DISC STAMPED  
 H-1144 1961 IN TOP OF HEADWALL 60' N.W.  
 OF UNION PACIFIC CROSSING AT JURUPA, ELEV.  
 = 777.827.

**Underground Service Alert**

Call TOLL FREE  
 1-800  
 422-4133  
 TWO WORKING DAYS BEFORE YOU DIG

PACIFIC TELEPHONE CO. APPROVED BY: <i>[Signature]</i> DATE: 3/21/90	SOUTHERN CALIFORNIA GAS CO. APPROVED BY: <i>[Signature]</i> DATE: 3-21-90
CITY WATER DEPARTMENT APPROVED BY: <i>[Signature]</i> DATE: 6-25-90	CITY ELECTRICAL DEPARTMENT APPROVED BY: <i>[Signature]</i> DATE: 5/22/90

**ENGINEER OF WORK**  
 GEORGE L. BENTON  
 R.C.E. 14594  
 EXP. DATE 3/31/93  
 12-6-89  
 DATE

**ACE ENGINEERING COMPANY**  
 PLANNERS • ENGINEERS • SURVEYORS  
 29377 RANCHO CALIFORNIA RD., SUITE 104  
 TEMECULA, CALIFORNIA 92390  
 TELEPHONE (714) 699-9058

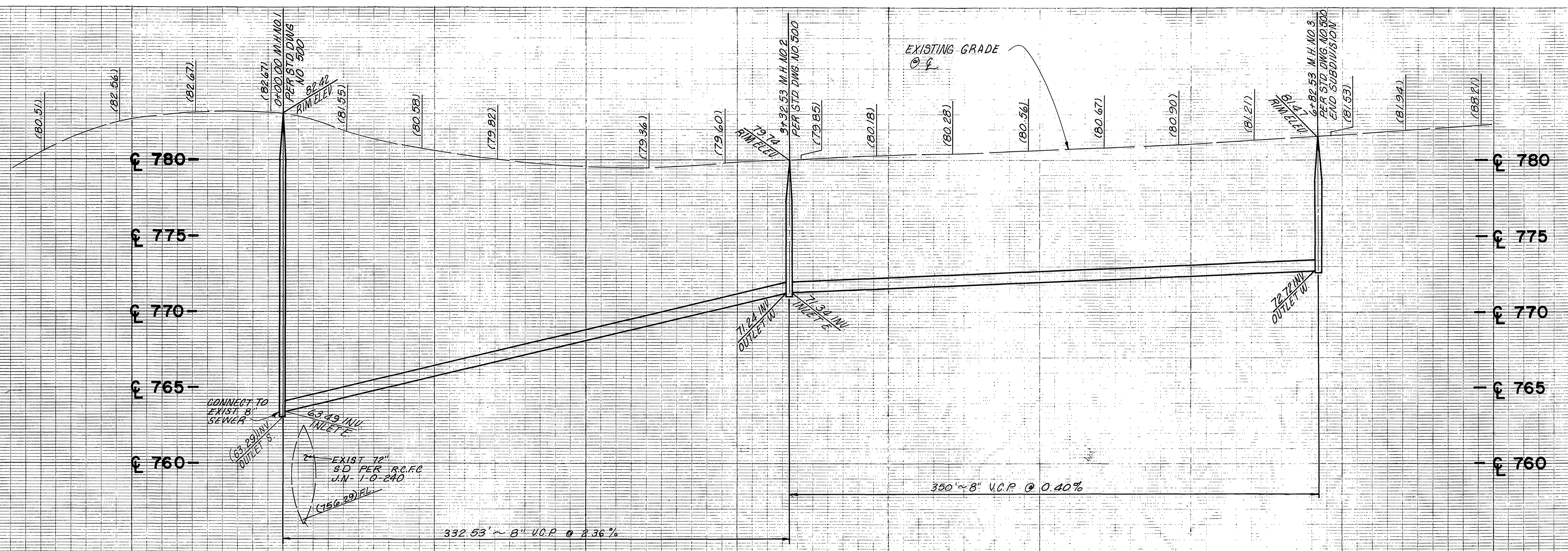
DESIGNED BY: D.L.S.	DRAWN BY: F.L.B.	CHECKED BY: M.W.N.
REVISIONS	APPR. DATE	

**CITY OF RIVERSIDE**  
 PUBLIC WORKS DEPARTMENT  
 APPROVED BY: *[Signature]*  
 DATE: 8/9/90  
 PRINCIPAL ENGINEER: *[Signature]*  
 TRAFFIC DIVISION: *[Signature]*  
 CHIEF P.W. ENGINEER: *[Signature]*  
 DATE: 8/9/90

**SEWER IMPROVEMENT PLAN**  
**TRACT 24892**  
**UNION PACIFIC RAILROAD**  
 HORIZ. SCALE: 1" = 40'  
 VERT. SCALE: 1" = 4'

AS BUILT 3/22/93 R/W  
 ACCOUNT NO. 115-1  
**S-1593**  
 SHEET 3 OF 4



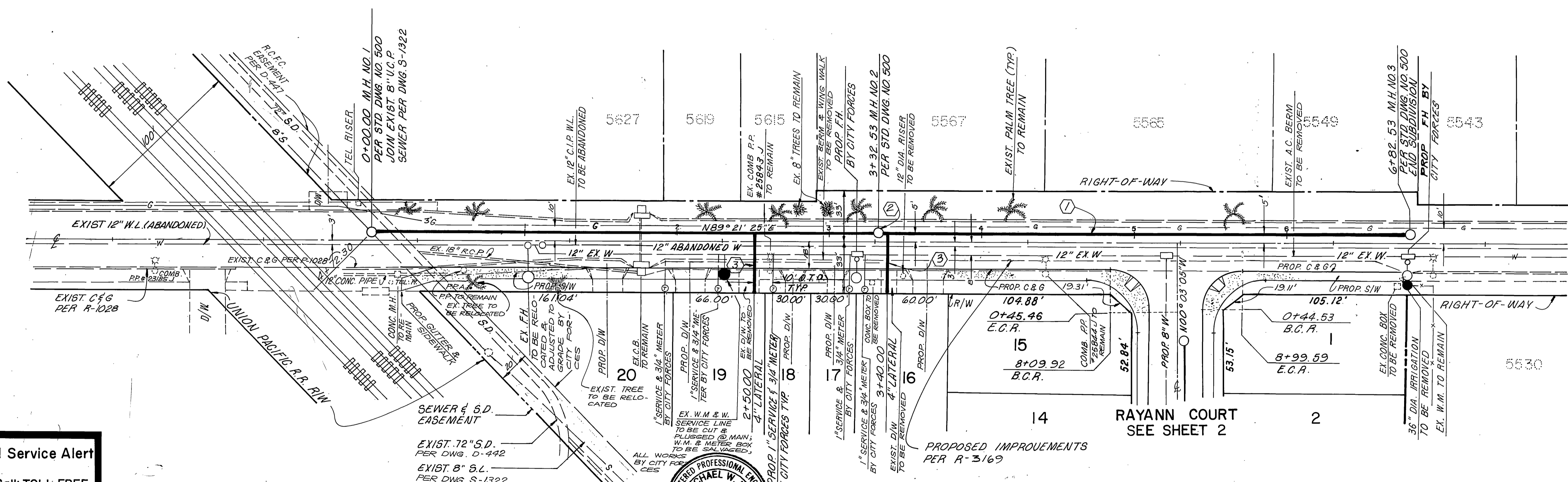


PROFILE: MOUNTAIN VIEW AVENUE

SCALE: HORIZ. 1" = 40' VERT. 1" = 4'

CONSTRUCTION NOTES

- ① 8" V.C.P. SEWER MAIN
- ② SEWER MANHOLE PER STD. DWG. 500
- ③ 4" V.C.P. LATERAL PER STD. DWG. 562



PLAN: MOUNTAIN VIEW AVENUE

SCALE: 1" = 40'

Underground Service Alert

Call: TOLL FREE  
1-800-422-4133  
TWO WORKING DAYS BEFORE YOU DIG

CENCOM CABLE TELEVISION CO.  
APPROVED BY: [Signature] DATE: 4-2-90

PACIFIC TELEPHONE CO.  
APPROVED BY: [Signature] DATE: 3/21/90

SOUTHERN CALIFORNIA GAS CO.  
APPROVED BY: [Signature] DATE: 3-21-90

ENGINEER OF WORK  
MICHAEL W. NG  
R.C.E. 44875  
EXP. DATE 3/31/94

ACE ENGINEERING COMPANY  
PLANNERS • ENGINEERS • SURVEYORS  
29377 RANCHO CALIFORNIA RD., SUITE 104  
TEMECULA, CALIFORNIA 92390  
TELEPHONE (714) 699-9058

MARK	REVISIONS	APPR. DATE

CITY OF RIVERSIDE  
PUBLIC WORKS DEPARTMENT  
APPROVED BY: [Signature] DATE: 8/9/90  
PRINCIPAL ENGINEER  
TRAFFIC DIVISION  
CHIEF P.W. ENGINEER

SEWER IMPROVEMENT PLAN  
TRACT 24892  
MOUNTAIN VIEW AVE.  
HORIZ. SCALE: 1" = 40' VERT. SCALE: 1" = 4'

ACCOUNT NO. 115-1  
S-1593  
SHEET 4 OF 4