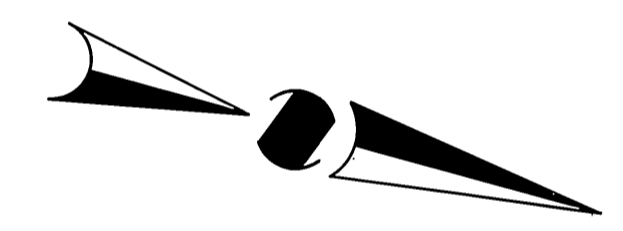
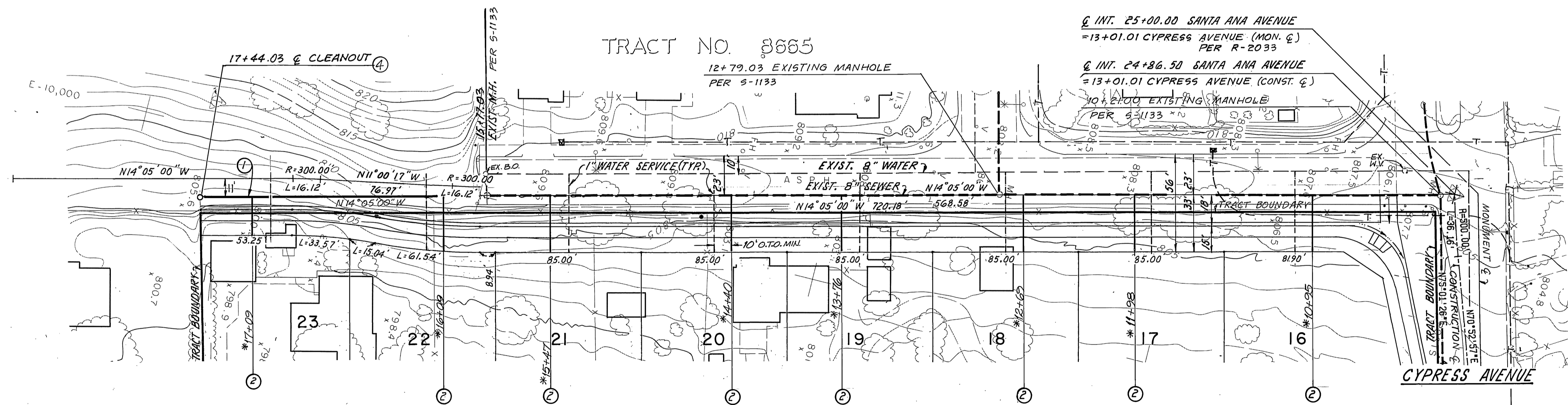


PROFILE SCALE  
HORIZ. 1" = 40' VERT. 1" = 4'



**CONSTRUCTION NOTES**

- ① CONST. 8" V.C.P. 150 L.F.
- ② CONST. 4" V.C.P. LATERAL
- ③ CONST. 8" SEWER CLEANOUT PER STD. DWG. 960

Underground Service Alert

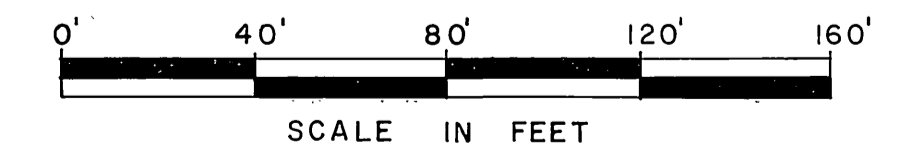
Call: TOLL FREE  
1-800  
422-4133

TWO WORKING DAYS BEFORE YOU DIG

**SANTA**



**ANA AVENUE**



CITY OF RIVERSIDE  
WATER DEPARTMENT

APPROVED BY: *Richard J. Diak* 2-26-91  
DATE

BENCH MARK:  
G2-B (RESET)  
PK. NAIL AND CITY ENGINEER  
TAG IN SOUTH WESTERLY CURB  
RETURN OF CABELL AVE.  
AT LA SIERRA AVE.

ELEV. = 770.448

**CSL ENGINEERING, INC.**

2900 ADAMS STREET, SUITE A25  
RIVERSIDE, CA. 92504 (714) 785-5122

PREPARED UNDER THE SUPERVISION OF  
*Richard A. Scianni* 2-21-91  
RICHARD A. SCIANNI R.C.E. NO. 25917 DATE:

CITY OF RIVERSIDE  
PUBLIC WORKS DEPARTMENT

APPROVED BY: *Barry Paul*  
DATE: 2/24/91  
PRINCIPAL ENGINEER  
TRAFFIC DIVISION  
CHIEF P.W. ENGINEER

SEWER IMPROVEMENT PLANS  
FOR

**TRACT 25246**

SANTA ANA AVENUE

HORIZ. SCALE: 1" = 40' VERT. SCALE: 1" = 4'

ACCOUNT NO.

5-1605

SHEET 2 OF 3

INDEXED 8-21-91

