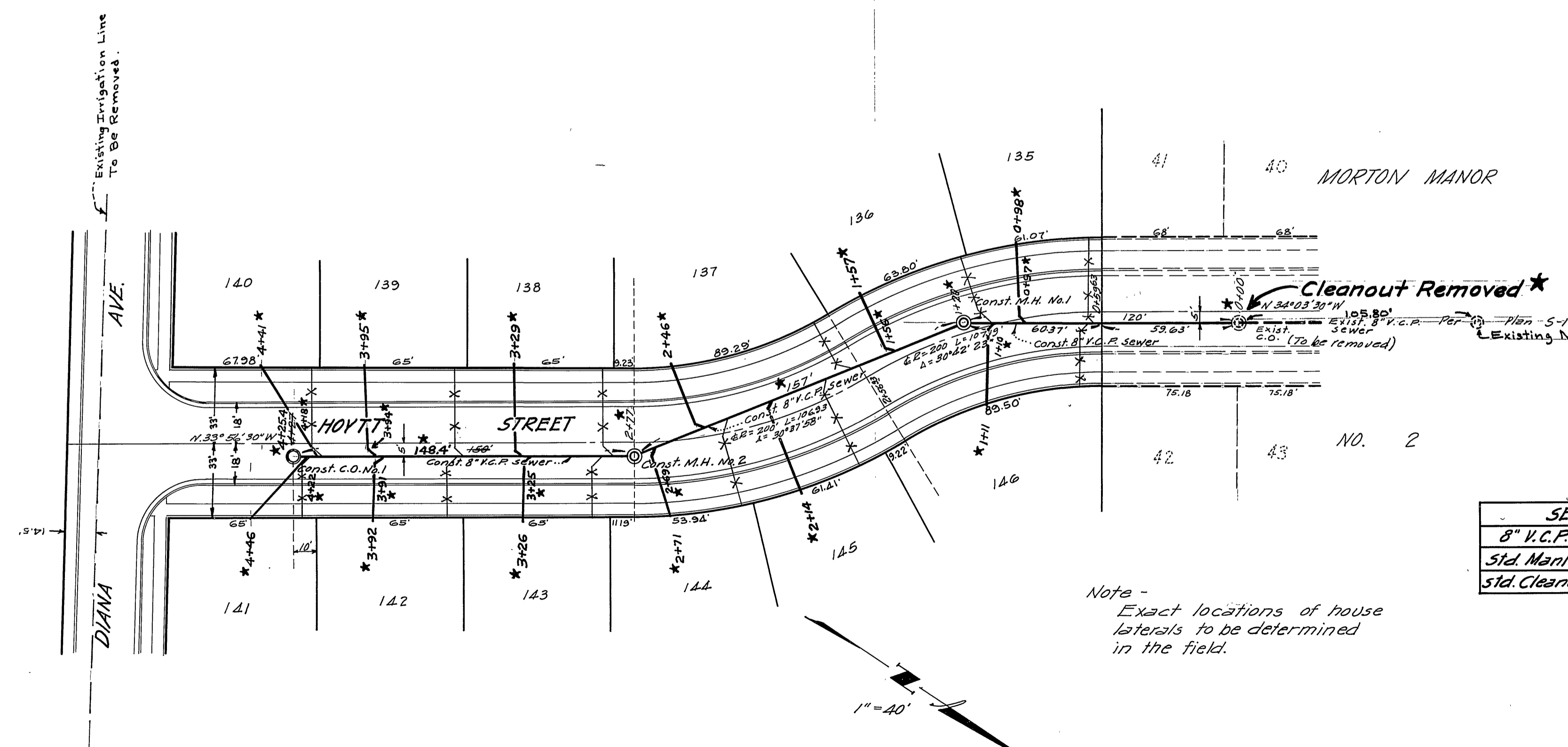
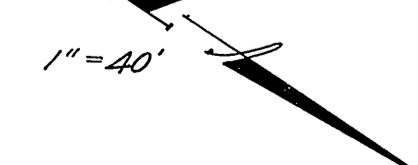


B.M. = X in top of Sily Curb - Hoytt St.
 at NEly Cor. of Lot 41 - Morton Manor Tr. # 2
 ELEV. 826.54



SEWER QUANTITIES	
8" V.C.P.	427'
Std. Manholes	2
Std. Cleanouts	1

Note -
 Exact locations of house
 laterals to be determined
 in the field.



MAXWELL SURVEYING
 San Bernardino, Calif.
 Approved by W.R. Maxwell 2/18/59 Date Feb 3, 1959

SEWER PLAN & PROFILE
HOYTT STREET
MORTON MANOR 6
 Horz. Scale 1"=40'; Vert. Scale 1"=4'

REVISIONS	
★	5-8-59 "As Built" H. Ball

Approved by *J. M. [Signature]*
 Date March 2, 1959
 No. **5-161**
 Sheet 1 of 1

City of Riverside
 Department of Public Works
 Engineer R. E. W.