

RIVERSIDE CITY OF RIVERSIDE CALIFORNIA

PUBLIC WORKS DEPARTMENT

LINCOLN/MADISON SEWER COLLINGWOOD TO EVANS

CONSTRUCTION LEGEND

CENTER LINE ———— C ————
 RIGHT-OF-WAY ———— R/W ————
 SUBDIVISION LOT LINE ———— PL ————

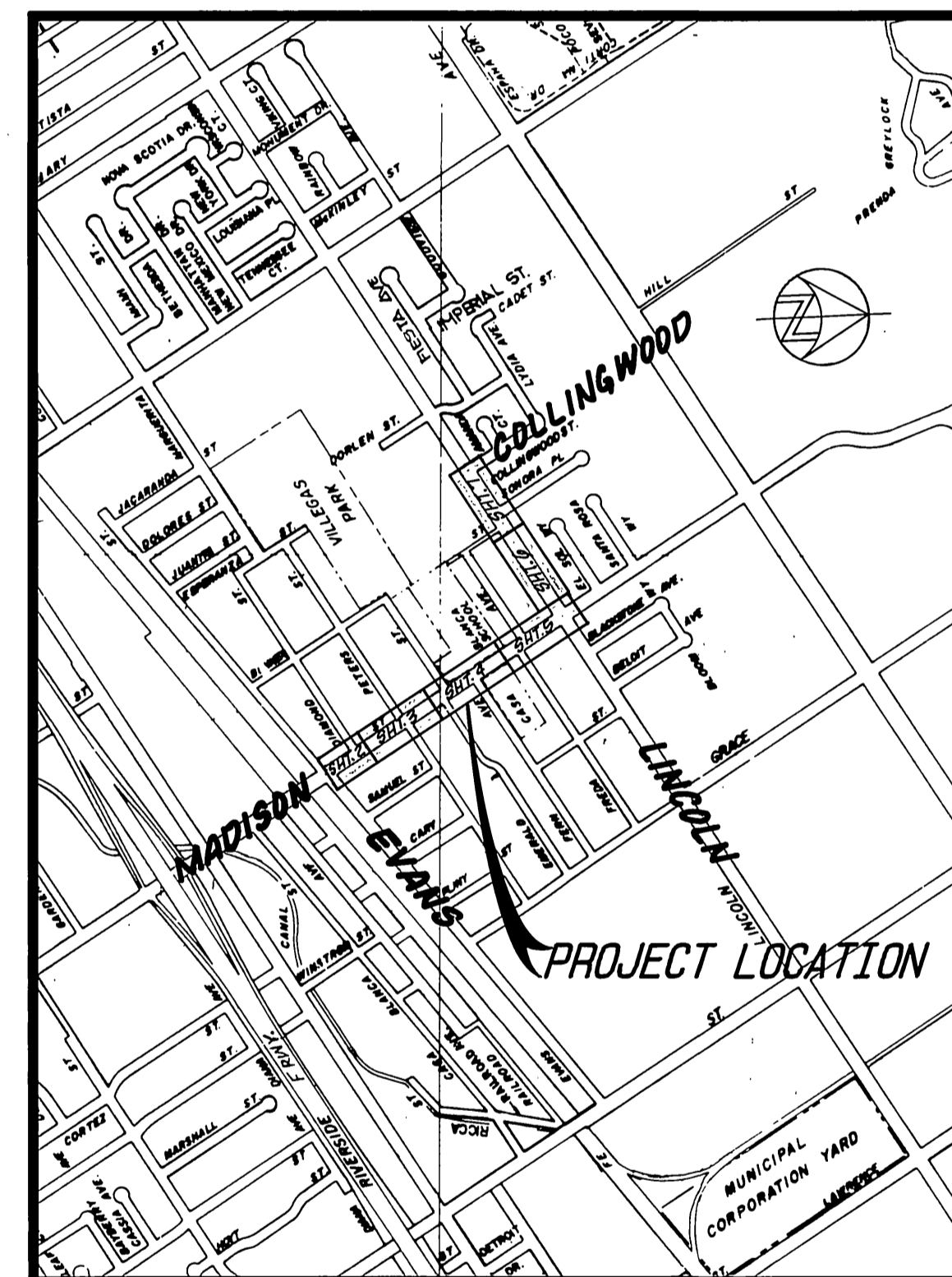
SPECIFIC CONSTRUCTION NOTES

NUMBERS ABOVE 100 IN A HEXAGON ON THE PLAN REFER TO THE RESPECTIVE STANDARD DRAWING AND SHALL BE CONSTRUCTED ACCORDINGLY, UNLESS MODIFICATIONS ARE NOTED ON THE PLAN OR COVER SHEET. ANY NUMBER SHOWN BELOW THE STANDARD DRAWING NUMBER INDICATES THE SPECIFIC ALTERNATE TO BE CONSTRUCTED.

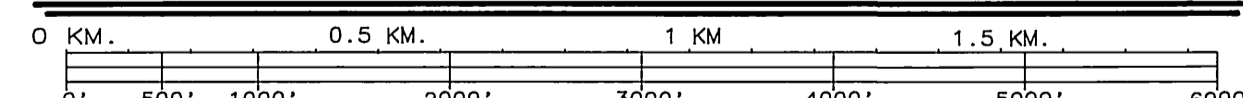
1 RECONSTRUCT SEWER LATERALS INTO EXISTING SEWER MAIN.

GENERAL CONSTRUCTION NOTES

- EXISTING UTILITIES SHOWN ON THIS PLAN ARE PLOTTED FROM UTILITY RECORDS. THE CONTRACTOR IS REQUIRED TO TAKE DUE PRECAUTIONARY MEASURES TO LOCATE AND PROTECT ALL UTILITIES WHETHER OR NOT SHOWN ON THIS PLAN. IF THE COVER OF A UTILITY IS KNOWN, IT IS SHOWN IN THE PROFILE. UTILITIES IN THE PROFILE AS INDICATES THAT THE COVER HAS NOT BEEN POTHOLED FOR EXACT COVER, BUT THE UTILITY IS NOT EXPECTED TO CONFLICT WITH THE PROPOSED IMPROVEMENTS.
- ALL ELEVATIONS SHOWN ON THE PLANS SHALL BE STAKED IN THE FIELD.
- PRIME CONTRACTORS BIDDING THIS WORK SHALL HAVE A CLASS A, C-34 OR C-42 LICENSE.



PROJECT LOCATION PLAN



SCALE: 1"=1000'

EXISTING UNDERGROUND & TOPOGRAPHY LEGEND

EXISTING UNDERGROUND UTILITIES:

SANITARY SEWER ———— 8" S ———— TELEPHONE CONDUIT ———— T ————
 WATER LINE ———— 6" W ———— ELECTRICAL CONDUIT ———— E ————
 STORM DRAIN ———— 24" SD ———— STREET LIGHTING CONDUIT ———— S.L. ————
 GAS LINE ———— 3" G ———— TRAFFIC SIGNAL ———— SIG ————
 ABANDONED UTILITY ———— 6" G (ABAN'D) ———— FIRE ALARM ———— F ————

EXISTING TOPOGRAPHY:

BLOCK WALL ————
 BOARD FENCE ————
 WIRE FENCE ————
 CHAIN LINK FENCE ————
 TOP OF SLOPE
 TOE OF SLOPE
 DIRECTION OF FLOW

⑤ SANITARY SEWER M.H.	○+ POLE & GUY ANCHOR	○ppb PEDESTRIAN PUSH BUTTON
○ ¹⁰⁰ SANITARY SEWER CLEANOUT	○ _{pp} POWER POLE	RR RAILROAD TRACKS
⑦ STORM DRAIN M.H.	○ _t TELEPHONE POLE	RR RAILROAD SIGN
⑦ IRRIGATION WEIR	□ _t TELEPHONE RISER	RR RAILROAD SIGNAL
⑦ WATER M.H.	○ _j JOINT USE POLE	○ T RAFFIC SIGNAL
⑦ GAS M.H.	□ PULL BOX	○ T RAFFIC SIGNAL ON MAST ARM
⑦ ELECTRIC M.H.	□ TRAFFIC SIGN	□ T RAFFIC SIGNAL CONTROLLER
⑦ TELEPHONE M.H.	□ PARKING METER	□ T RAFFIC SIGNAL PRESSURE DETECTOR
⑦ WATER METER	□ FIRE ALARM BOX	□ T TRAFFIC SIGNAL LOOP DETECTOR
⑦ FIRE HYDRANT	□ STREET NAME SIGN	□ T STREET LIGHT & TRAFFIC SIGNAL ON MAST ARM
• SPRINKLER HEAD	□ GAS METER	□ T STREET LIGHT (UPRIGHT)
• VALVE	□ MAIL BOX	□ T STREET LIGHT ON MAST ARM
• AIR VALVE	□ FAUCET	□ T STEEL POST
• AIR VENT	○ _{pp} WALK-DON'T WALK PEDESTRIAN SIGNAL	□ T WOOD POST
△ BUS STOP SIGN	○ _{pp} ELECTRICAL TEST STATION	
○ ¹⁰⁰ BLOW-OFF VALVE	≡≡≡ WHEEL STOP	
○ ¹⁰⁰ IRRIGATION STAND PIPE	≡≡≡ A.C. BERM	
CONCRETE		
ASPHALT		
BUILDING		
EDGE OF PAVEMENT		

IMPORTANT NOTICE
 Section 4216/4217 of the Government Code requires a Dig Alert Identification Number to be issued before a "Permit to Excavate" will be valid. For your Dig Alert I.D. Number call Underground Service Alert TOLL FREE 1-800-422-4133 Two working days before you dig.



ENGINEER IN RESPONSIBLE CHARGE

 BEN URQUIZA
 R.C.E. 33657 Expires: 6/30/94
 DATE MAY 2, 1991

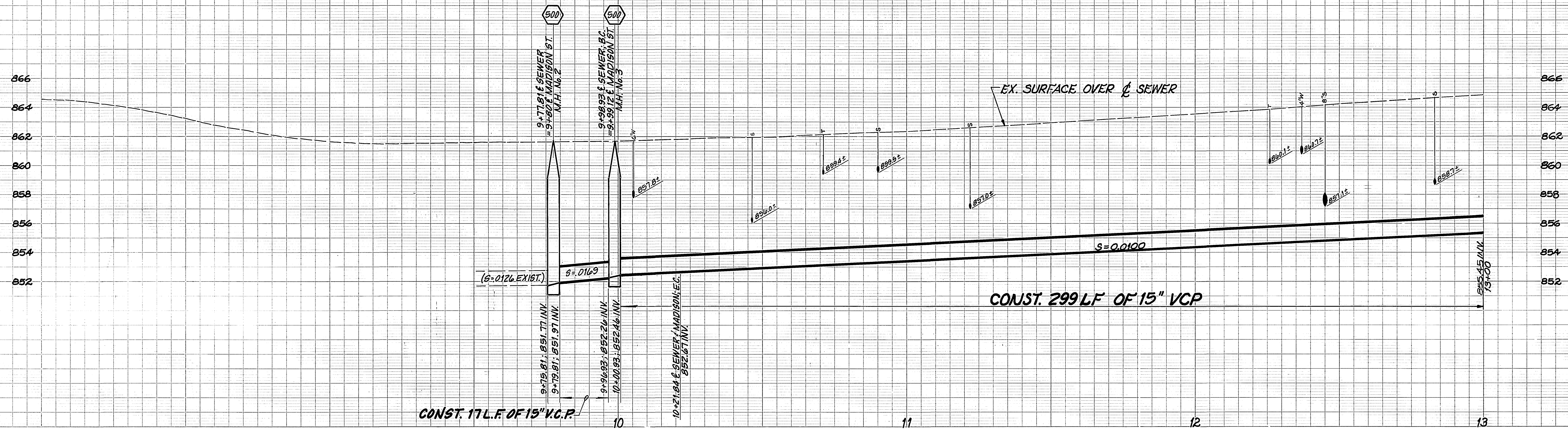
CITY OF RIVERSIDE
 PUBLIC WORKS DEPARTMENT

APPROVED BY	DATE	BY	APPROVED BY
DEPUTY P.W. ENGINEER	5/16/91	RLC	
PRINCIPAL ENGINEER	5/6/91	RLC	
CHIEF P.W. INSPECTOR	5-3-91	RLC	
SURVEYOR	5-2-91	RLC	
TRAFFIC DIVISION	5-6-91	RLC	
PARKS DEPARTMENT	5-2-91	RLC	PUBLIC WORKS DIRECTOR
STREET SERVICES	5-2-91	RLC	DATE 5/19/91

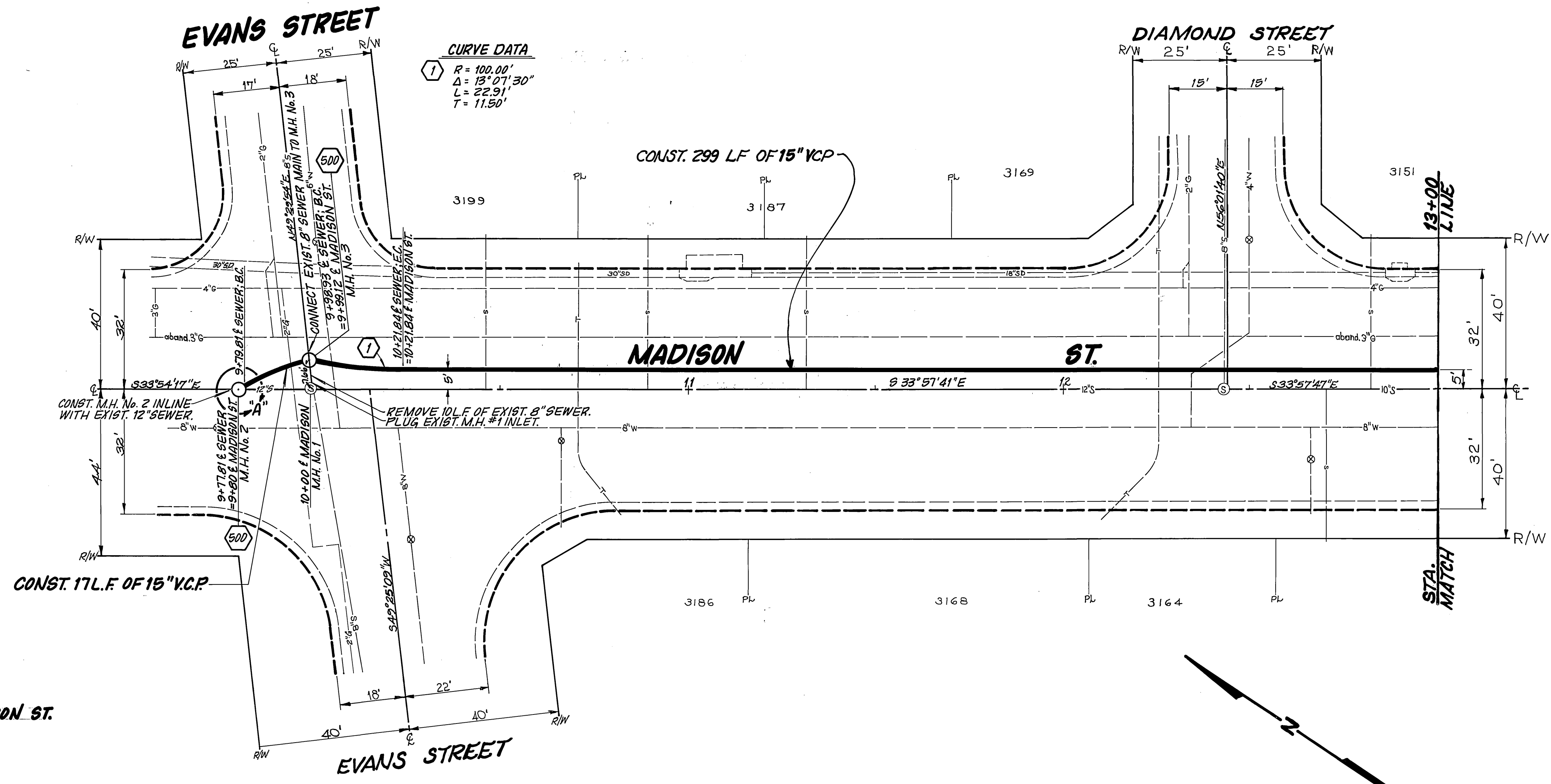
LINCOLN/MADISON SEWER
 COLLINGWOOD TO EVANS

ACCOUNT NO. 32-577-523
 S-1612
 SHEET 1 OF 7

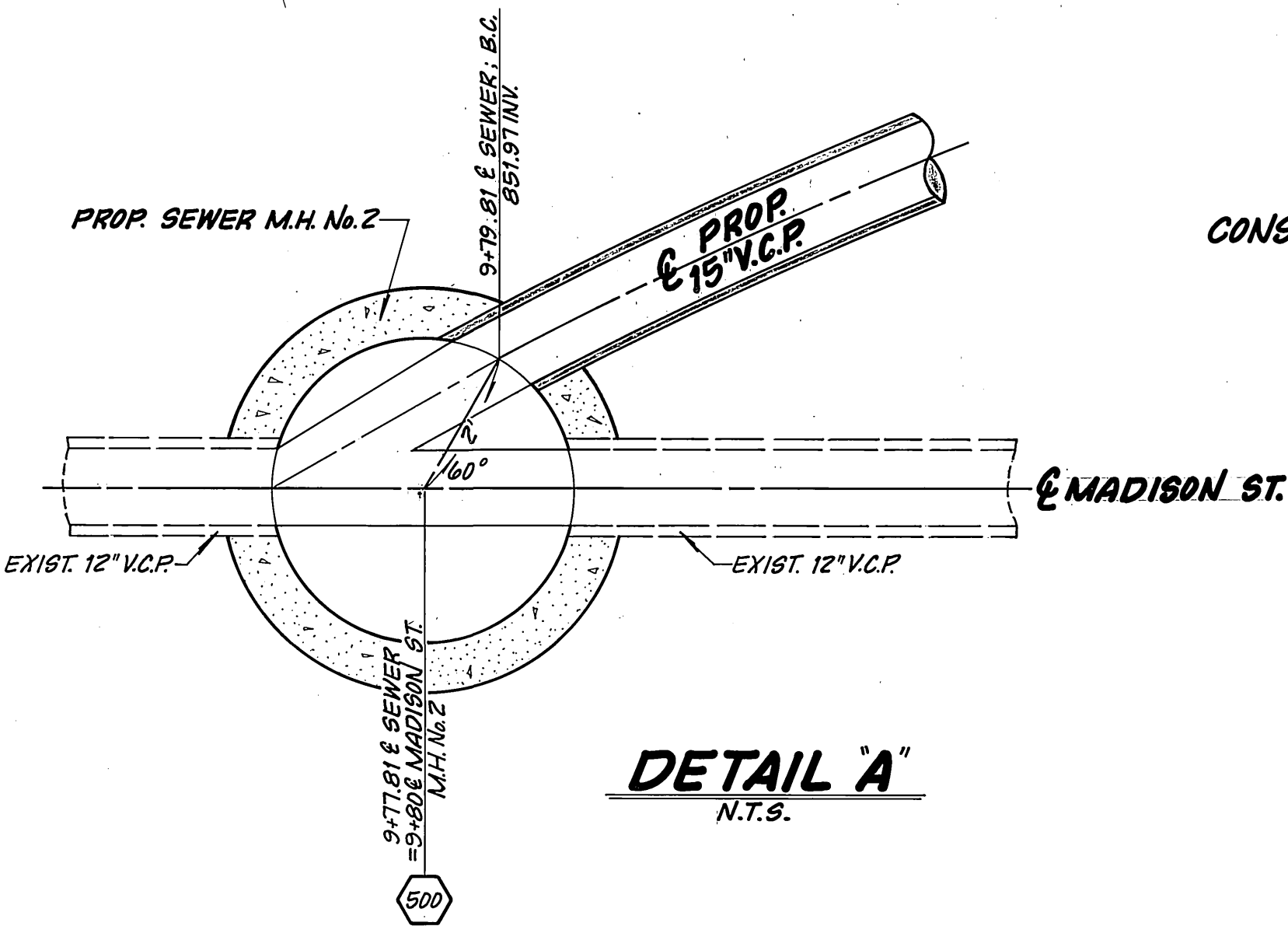
DESIGNED BY BU, DRAWN BY JRM, CHECKED BY [Signature]



BENCH MARK 601-17-68
 3" BRONZE DISH IN CONCRETE POST 91.5' S.W. OF
 E MADISON ST.; 22.7' S.E. RAIL OF MAIN LINE.
ELEV: 861.455



CURVE DATA
 R = 100.00'
 Δ = 13° 07' 30"
 L = 22.91'
 T = 11.50'



ENGINEER IN RESPONSIBLE CHARGE
 Ben Urquiza
 R.C.E. 33657 Expires: 6/30/94
 DATE MAY 2, 1991

CITY OF RIVERSIDE
 PUBLIC WORKS DEPARTMENT

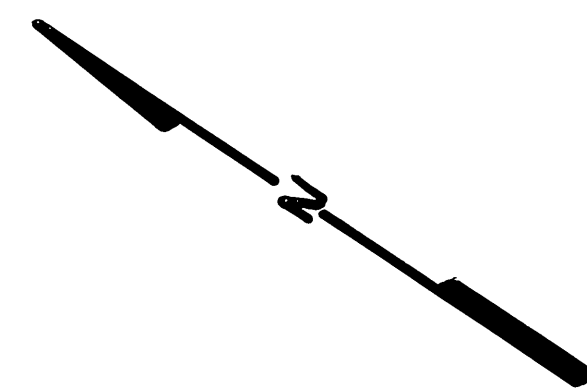
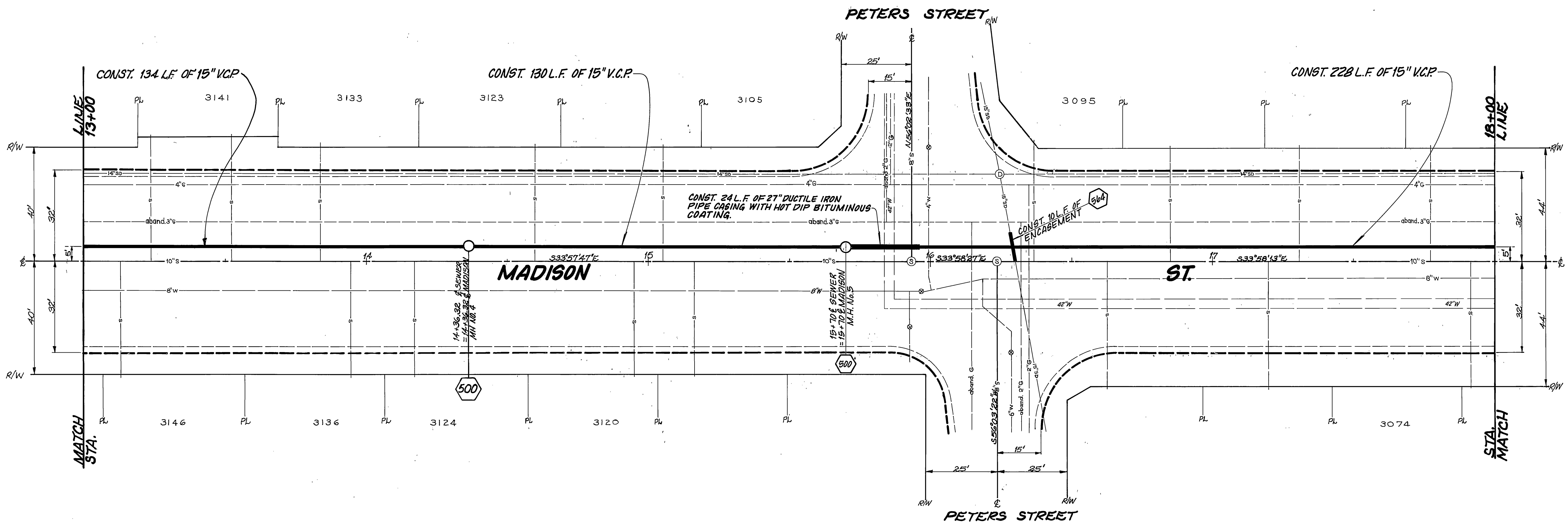
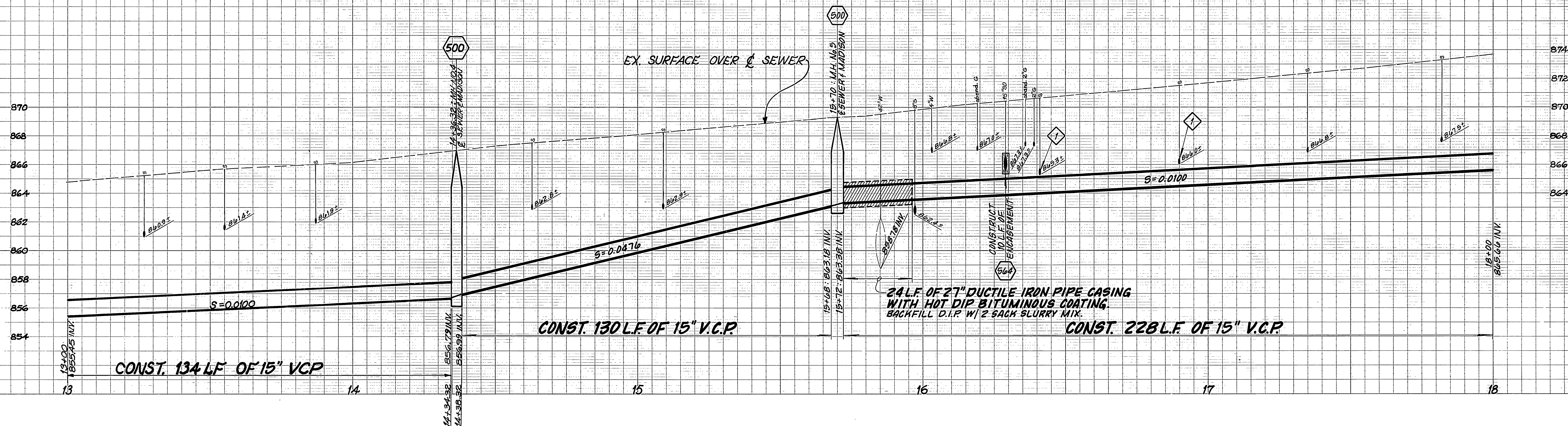
APPROVED BY	DATE	BY	APPROVED BY	DATE
PRINCIPAL ENGINEER	5/6/91	BU	Dan Bel	5/19/91
DEPUTY P.W. DIRECTOR	5/17/91	RM	PUBLIC WORKS DIRECTOR	
TRAFFIC DIVISION	5-6-91	SB		
CHIEF P.W. INSPECTOR	5-3-91	REA		
SURVEYOR	5-29-91	SDH		
STREET SERVICES	5-6-91	KE		

LINCOLN/MADISON SEWER
COLLINGWOOD TO EVANS

ACCOUNT NO. 32-577-523
S-1612
 SHEET **2** OF **7**

HORIZ. SCALE: 1" = 20' VERT. SCALE: 1" = 4'

INDEXED 9-17-91 LPH



ENGINEER IN RESPONSIBLE CHARGE
Ben Urquiza
 R.C.E. 33657 Expires: 6/30/94
 DATE MAY 2, 1991

MARK	REVISIONS	APPR.	DATE

CITY OF RIVERSIDE
 PUBLIC WORKS DEPARTMENT

APPROVED BY	DATE	BY	APPROVED BY
PRINCIPAL ENGINEER	5/6/91	[Signature]	PUBLIC WORKS DIRECTOR
DEPUTY P.W. DIRECTOR	5/11/91	[Signature]	
TRAFFIC DIVISION	5-6-91	[Signature]	
CHIEF P.W. INSPECTOR	5-3-91	[Signature]	
SURVEYOR	5-2-91	[Signature]	

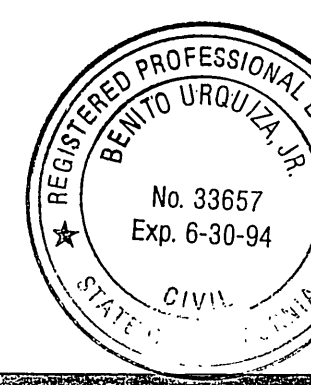
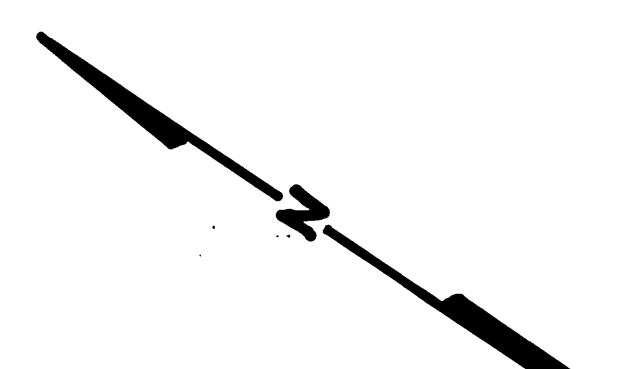
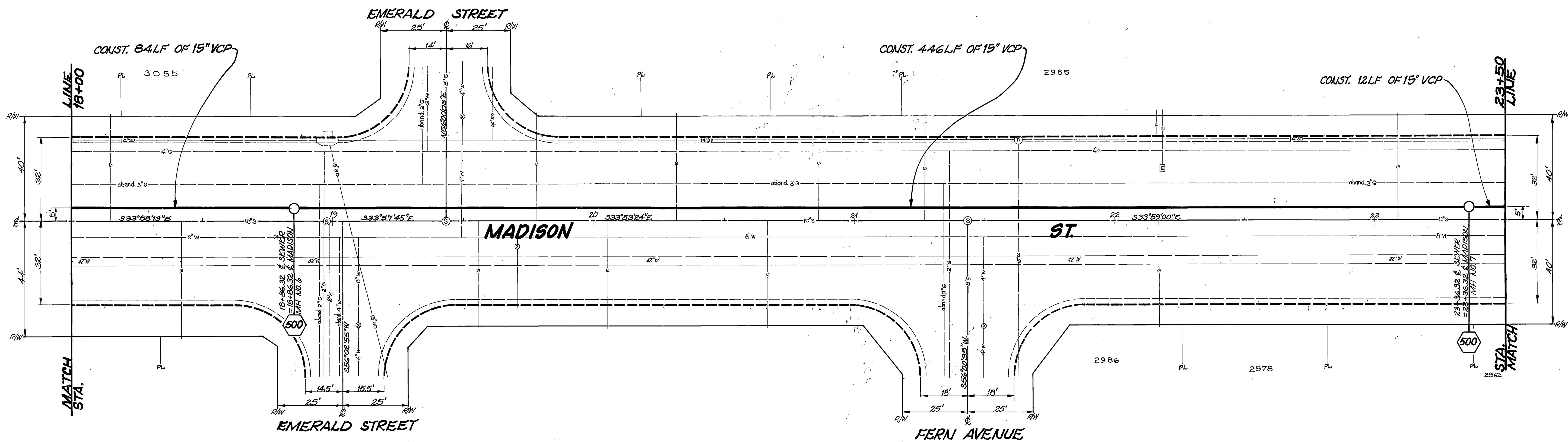
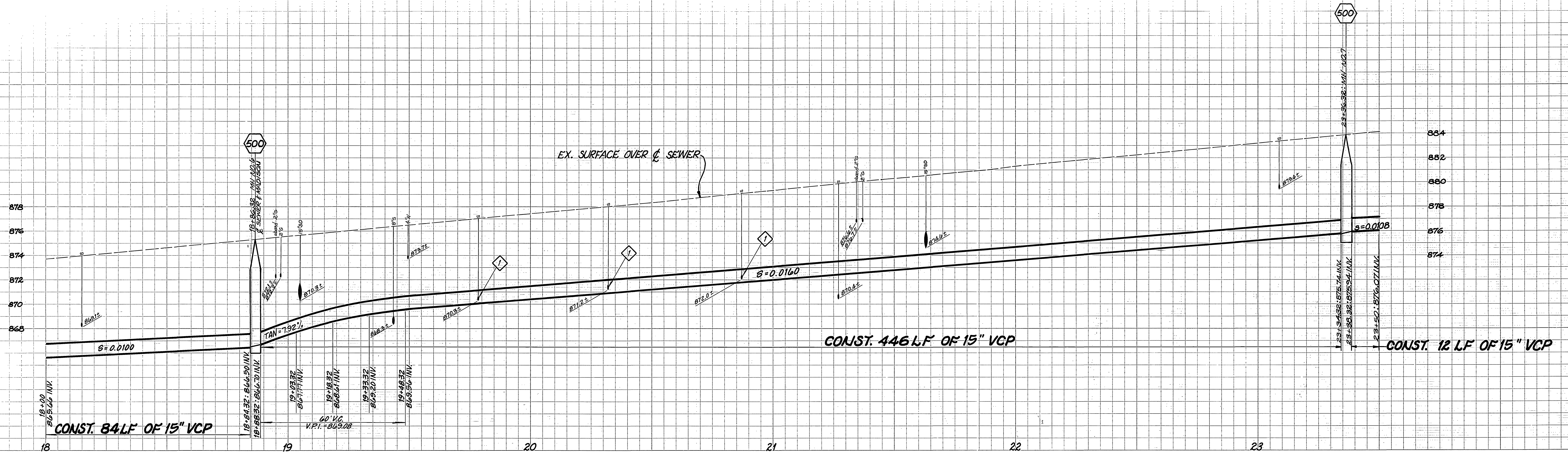
DESIGNED BY: B.U. DRAWN BY: [Signature] CHECKED BY: [Signature]

LINCOLN/MADISON SEWER
COLLINGWOOD TO EVANS

HORIZ. SCALE: 1" = 20'
 VERT. SCALE: 1" = 4'

ACCOUNT NO. 32-577-523
S-1612
3 OF **7**

INDEXED 9-17-91 [Signature]



ENGINEER IN RESPONSIBLE CHARGE
Ben Urquiza
 No. 33657 Exp. 6-30-94
 R.C.E. 33657 Expires: 6/30/94
 DATE MAY 2, 1991

MARK REVISIONS APPR. DATE
 DESIGNED BY *BU* DRAWN BY *AM* CHECKED BY *TC*

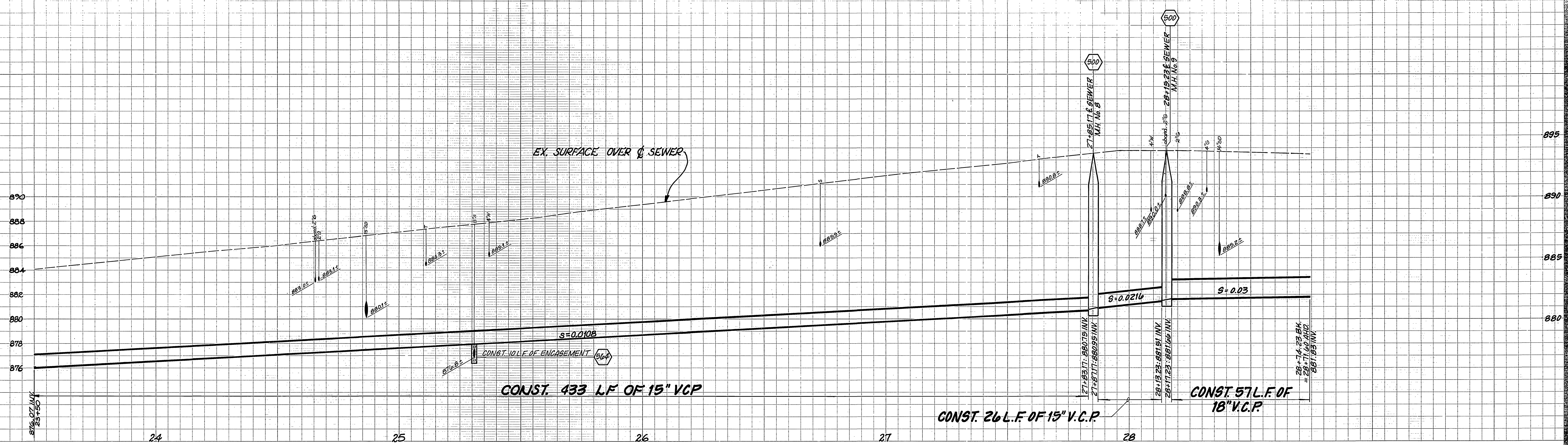
CITY OF RIVERSIDE
 PUBLIC WORKS DEPARTMENT

APPROVED BY	DATE	BY	APPROVED BY
PRINCIPAL ENGINEER	5/6/91	<i>TC</i>	<i>Ben Urquiza</i>
DEPUTY P.W. DIRECTOR	5/17/91	<i>AM</i>	PUBLIC WORKS DIRECTOR
TRAFFIC DIVISION	5-6-91	<i>TC</i>	
CHIEF P.W. INSPECTOR	5-7-91	<i>TC</i>	
SURVEYOR	5-2-91	<i>AM</i>	DATE 5/19/91

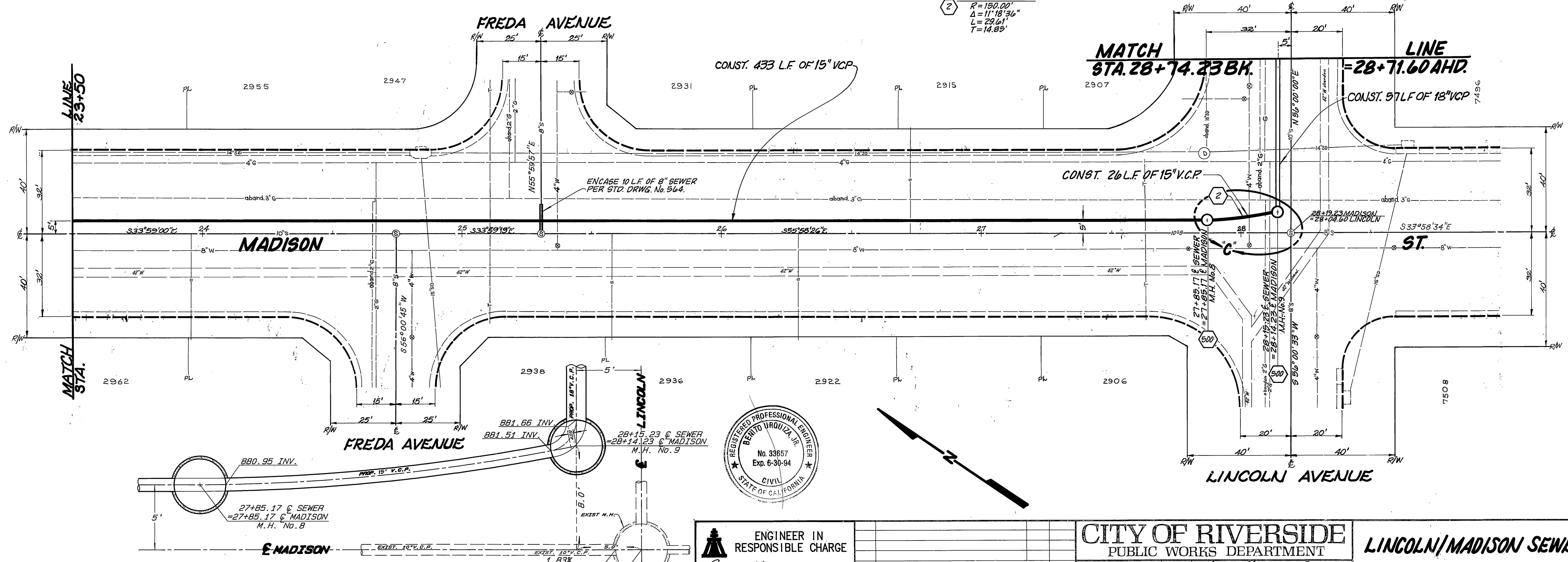
LINCOLN/MADISON SEWER
COLLINGWOOD TO EVANS

HORIZ. SCALE: 1" = 20'
 VERT. SCALE: 1" = 4'

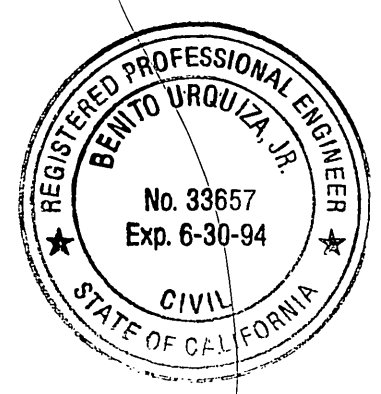
ACCOUNT NO. 32-677-523
S-1612
 SHEET **4** OF **7**



CURVE DATA
 R = 190.00'
 Δ = 11° 18' 36"
 L = 29.61'
 T = 14.85'



DETAIL "C"
 SCALE 1" = 4'



ENGINEER IN RESPONSIBLE CHARGE
 Ben Urquiza
 R.C.E. 33657 Expires: 6/30/94
 DATE MAY 2, 1991

CITY OF RIVERSIDE
 PUBLIC WORKS DEPARTMENT

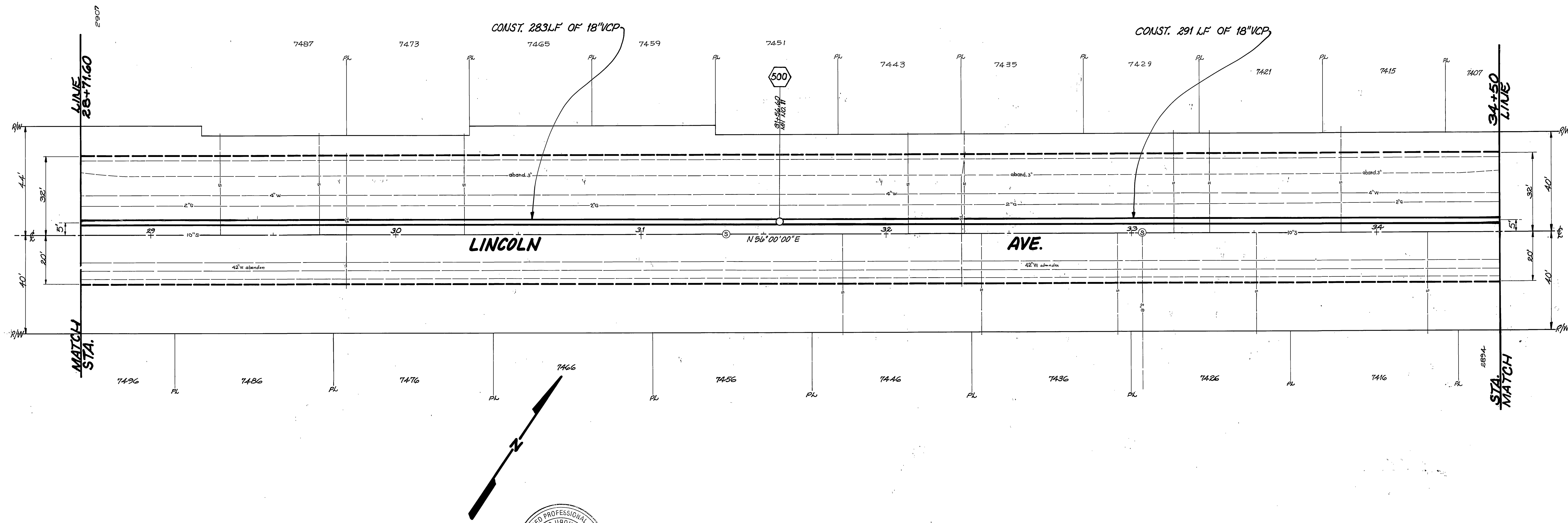
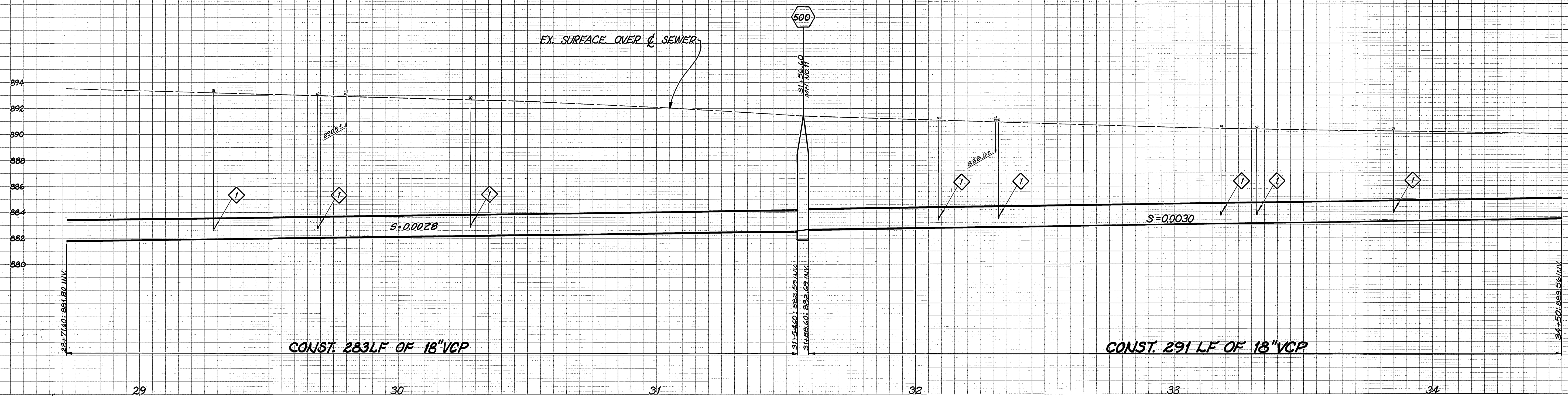
APPROVED BY	DATE	BY
PRINCIPAL ENGINEER	5/1/91	B. Urquiza
DEPUTY P.W. DIRECTOR	5/1/91	Arb
TRAFFIC DIVISION	5-2-91	BS
CHIEF P.W. INSPECTOR	5-2-91	Arb
SURVEYOR	5-2-91	Arb

LINCOLN/MADISON SEWER
 COLLINGWOOD TO EVANS

ACCOUNT NO. 32-577-523
S-1612
 SHEET **5** OF **7**

HORIZ. SCALE: 1" = 20' VERT. SCALE: 1" = 4'

INDEXED 9-17-91 LFT



ENGINEER IN RESPONSIBLE CHARGE
Ben Urdulaz
 R.C.E. 33657 Expires: 6/30/94
 DATE **MAY 2, 1991**

MARK	REVISIONS	APPR.	DATE

CITY OF RIVERSIDE
PUBLIC WORKS DEPARTMENT

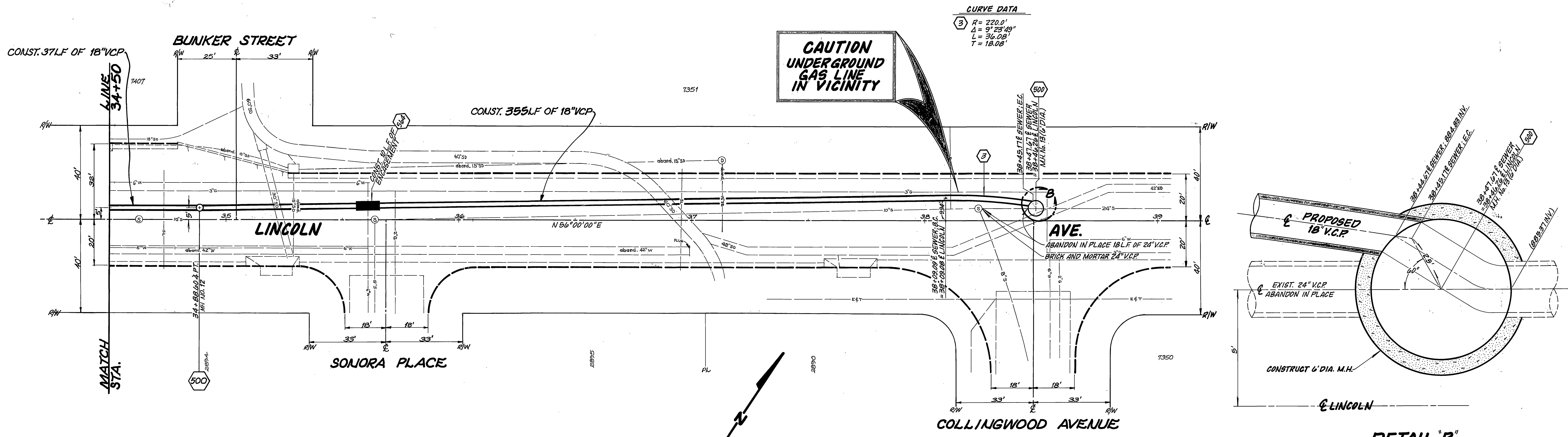
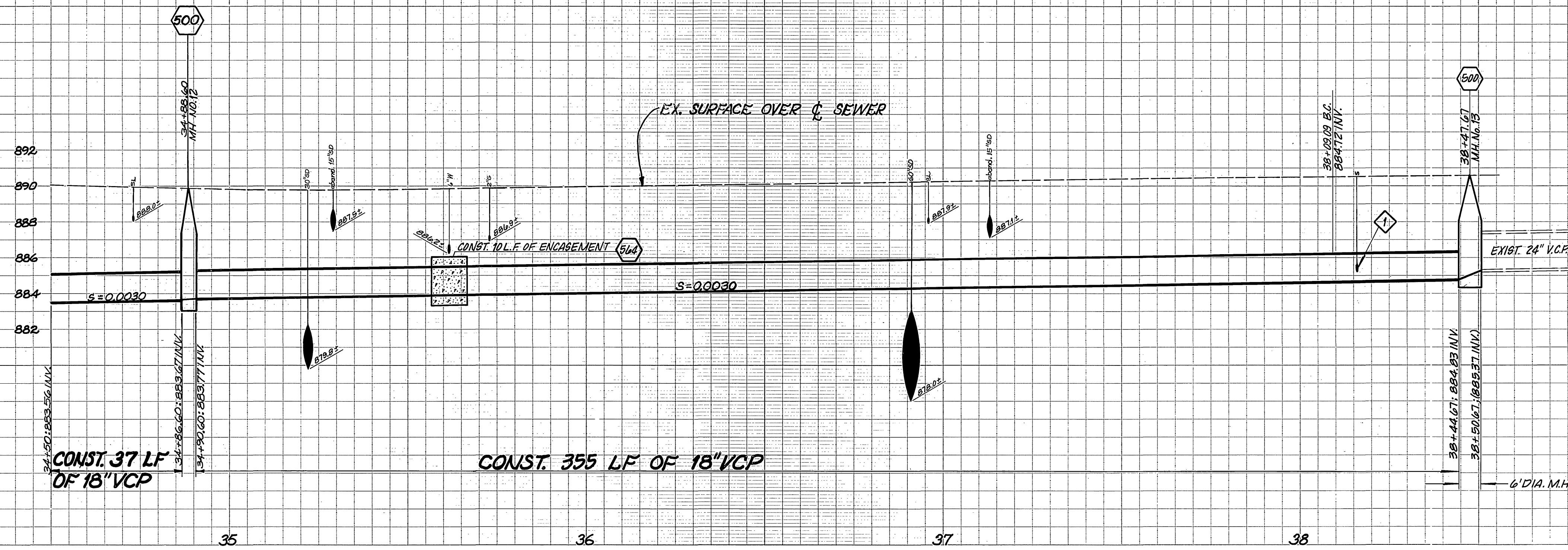
APPROVED BY	DATE	BY	APPROVED BY
PRINCIPAL ENGINEER	5/6/91	BEA	<i>Ben Beal</i>
DEPUTY P.W. DIRECTOR	5/17/91	ROK	PUBLIC WORKS DIRECTOR
TRAFFIC DIVISION	5-6-91	BEA	
CHIEF P.W. INSPECTOR	5-3-91	BEA	
SURVEYOR	5-2-91	ROK	DATE 5/19/91

DESIGNED BY *BU* DRAWN BY *SM* CHECKED BY *BEA*

LINCOLN/MADISON SEWER
COLLINGWOOD TO EVANS

HORIZ. SCALE: 1" = 20'
 VERT. SCALE: 1" = 4'

ACCOUNT NO. 92-577-623
S-1612
 SHEET **6** OF **7**



ENGINEER IN RESPONSIBLE CHARGE
 Ben Urquiza
 R.C.E. 33657 Expires: 6/30/94
 DATE MAY 2, 1992

MARK	REVISIONS	APPR.	DATE

CITY OF RIVERSIDE
PUBLIC WORKS DEPARTMENT

APPROVED BY	DATE	BY	APPROVED BY
PRINCIPAL ENGINEER	5/6/91	[Signature]	PUBLIC WORKS DIRECTOR
DEPUTY P.W. DIRECTOR	5/1/91	[Signature]	
TRAFFIC DIVISION	5-4-91		
CHIEF P.W. INSPECTOR	5-2-91		
SURVEYOR	5-2-91		

DESIGNED BY [Signature] DRAWN BY [Signature] CHECKED BY [Signature]

LINCOLN/MADISON SEWER
COLLINGWOOD TO EVANS

HORIZ. SCALE: 1" = 20'
 VERT. SCALE: 1" = 4'

ACCOUNT NO. 32-577-523
S-1612
 SHEET 7 OF 7