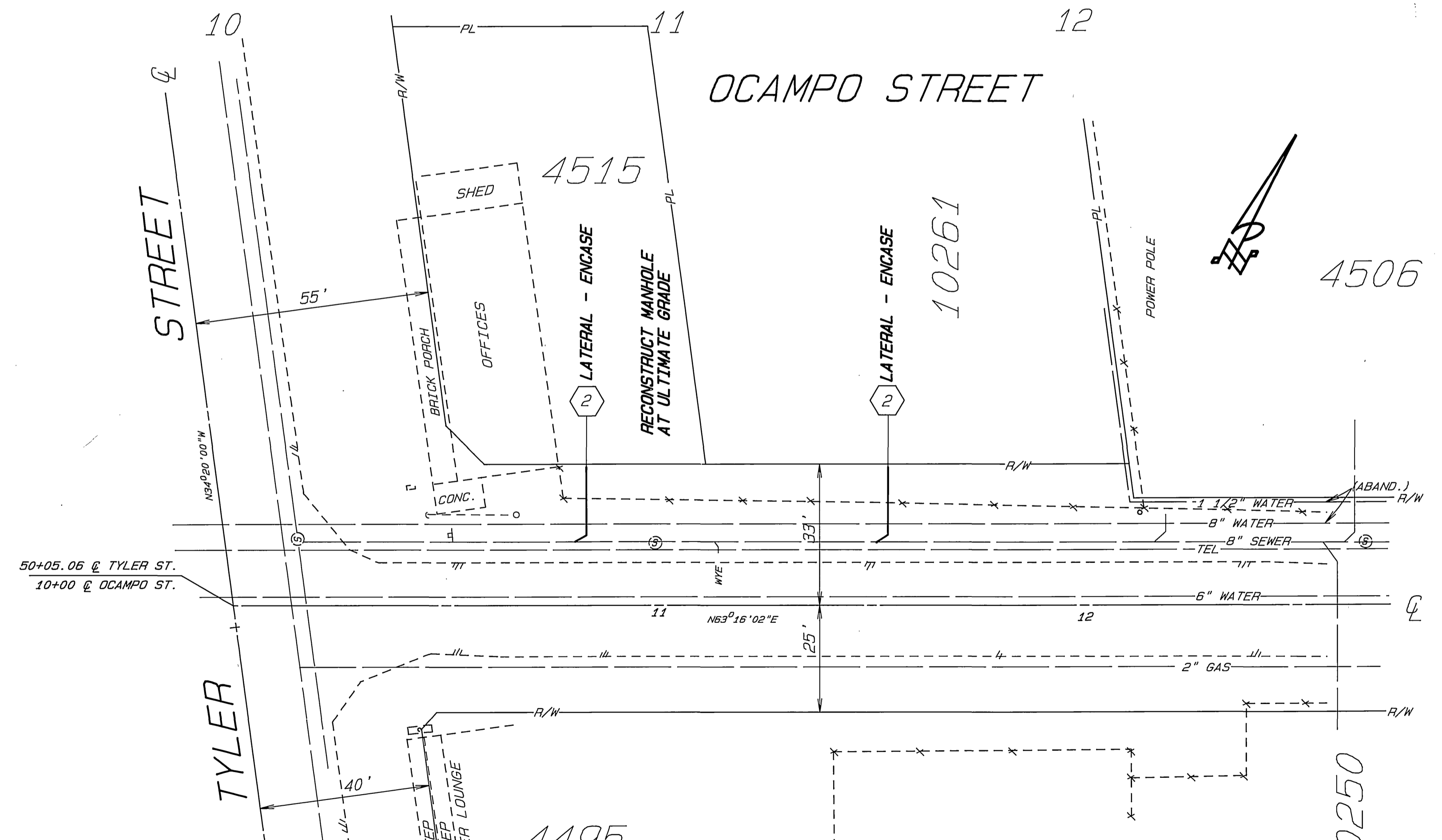
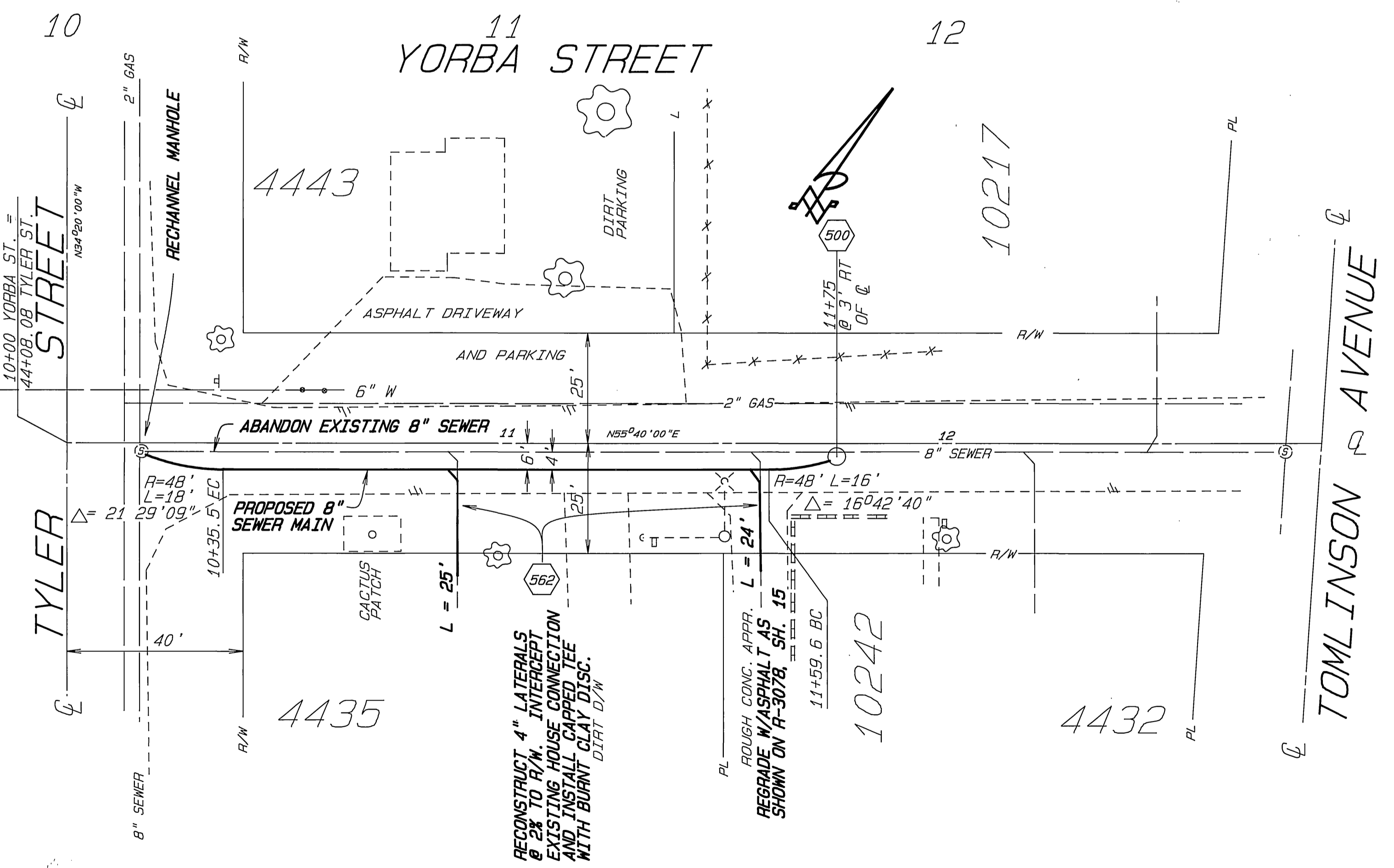
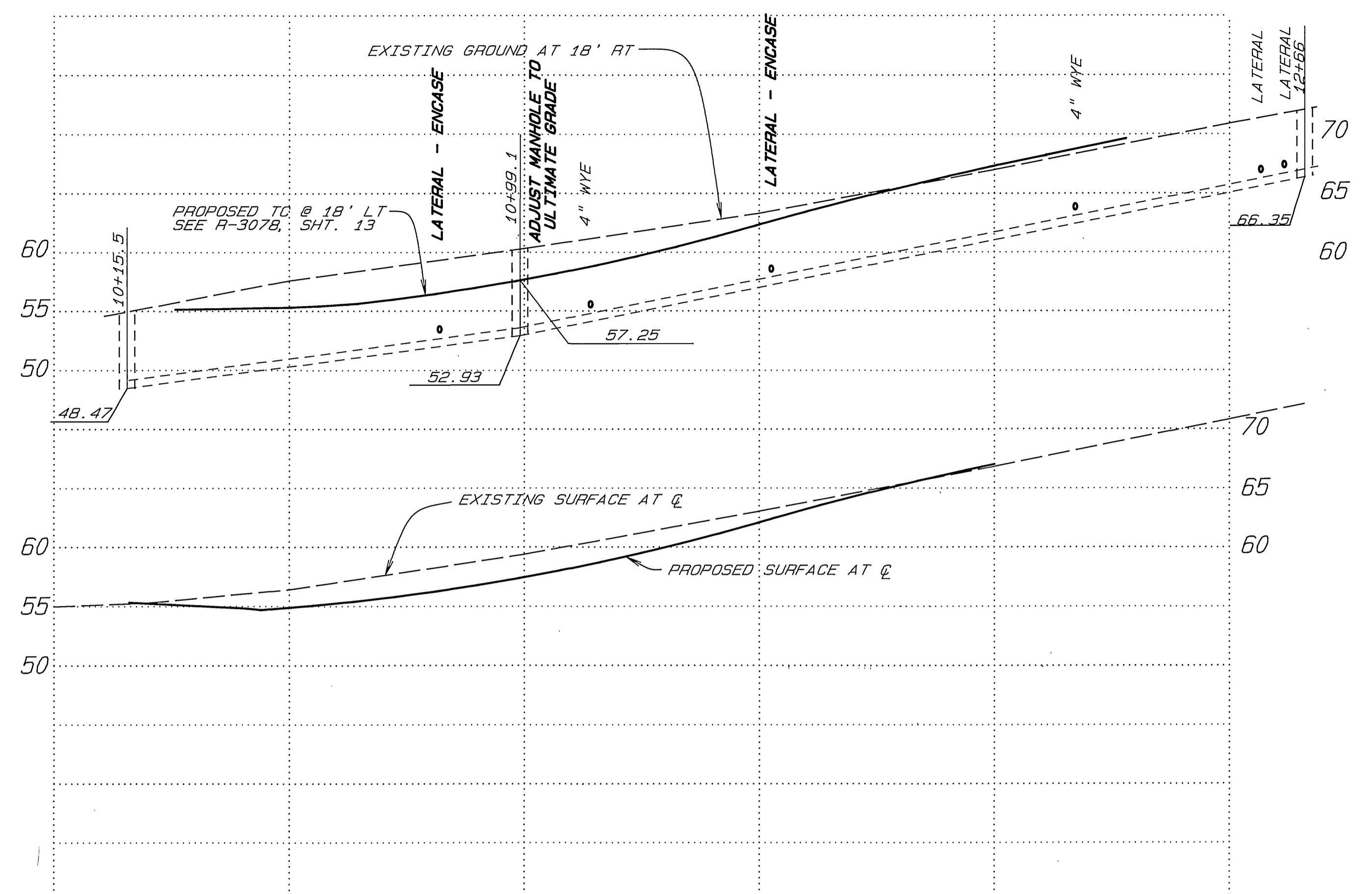


**NOTES**

1. CONSTRUCTION SHALL BE IN ACCORDANCE WITH THE CITY OF RIVERSIDE STANDARD DRAWINGS AND STANDARD SPECIFICATIONS FOR PUBLIC WORKS CONSTRUCTION, 1991 EDITION.
2. NUMBERS ABOVE 100 IN A HEXAGON ON THE PLAN REFER TO THE RESPECTIVE STANDARD DRAWING AND SHALL BE CONSTRUCTED ACCORDINGLY, UNLESS MODIFICATIONS ARE NOTED ON THE PLAN. ANY NUMBER SHOWN BELOW THE STANDARD DRAWING NUMBER INDICATES THE SPECIFIC ALTERNATE TO BE CONSTRUCTED.
3. ENCASE SEWER LATERAL PER STD. DWG 554.
4. ALL ELEVATIONS ON THE PLAN SHALL BE STAKED IN THE FIELD.
5. CONFLICTING UTILITIES IN THE CONSTRUCTION AREA SHALL BE RELOCATED OR ABANDONED.
6. EXISTING UTILITIES SHOWN ON THE PLAN, ARE PLOTTED FROM UTILITY RECORDS. THE CONTRACTOR IS REQUIRED TO TAKE DUE PRECAUTIONARY MEASURES TO LOCATE AND PROTECT ALL UTILITIES WHETHER OR NOT SHOWN ON THIS PLAN.



**BENCHMARK**  
 PK NAIL AND CITY TAG IN WESTERLY TC OF TYLER STREET, 265' SOUTHEAST OF END OF EXISTING CURB AND GUTTER, 64.5' SOUTHERLY OF Q INTERSECTION OF TYLER STREET AND OCAMPO STREET.  
 ELEVATION = 754.98'



**ENGINEER IN RESPONSIBLE CHARGE**  
 HANS J. KAMRATH  
 R.C.E. 14712 expires 3/31/93  
 DATE 8/6/1991

MARK	REVISIONS	APPR. DATE

**CITY OF RIVERSIDE**  
**PUBLIC WORKS DEPARTMENT**  
 APPROVED BY: [Signature]  
 DEPUTY P.W. DIRECTOR  
 DATE 8/12/91

**SEWER MODIFICATIONS**  
 YORBA ST. - 8" MAIN REPLACEMENT  
 OCAMPO ST. - LATERAL ENCASEMENTS  
 EASTERLY OF TYLER ST.  
 DATE 8/12/91

ACCOUNT NO. 30-575-262-07  
**S-1624**  
 SHEET 3 OF 3