

THIS PLAN PREPARED IN THE OFFICES OF
 VOORHEIS-TRINDLE-NELSON INC.
 9358 WESTMINSTER AVENUE
 WESTMINSTER, CALIFORNIA
 C.R. NELSON R.E. 87.81

CITY OF RIVERSIDE CALIFORNIA
 DEPARTMENT OF PUBLIC WORKS

SOL VISTA
 SEWER
 DRIFTWOOD DRIVE
 WARWICK COURT

Scale: HORIZ: 1"=40'
 VERT: 1"=4'

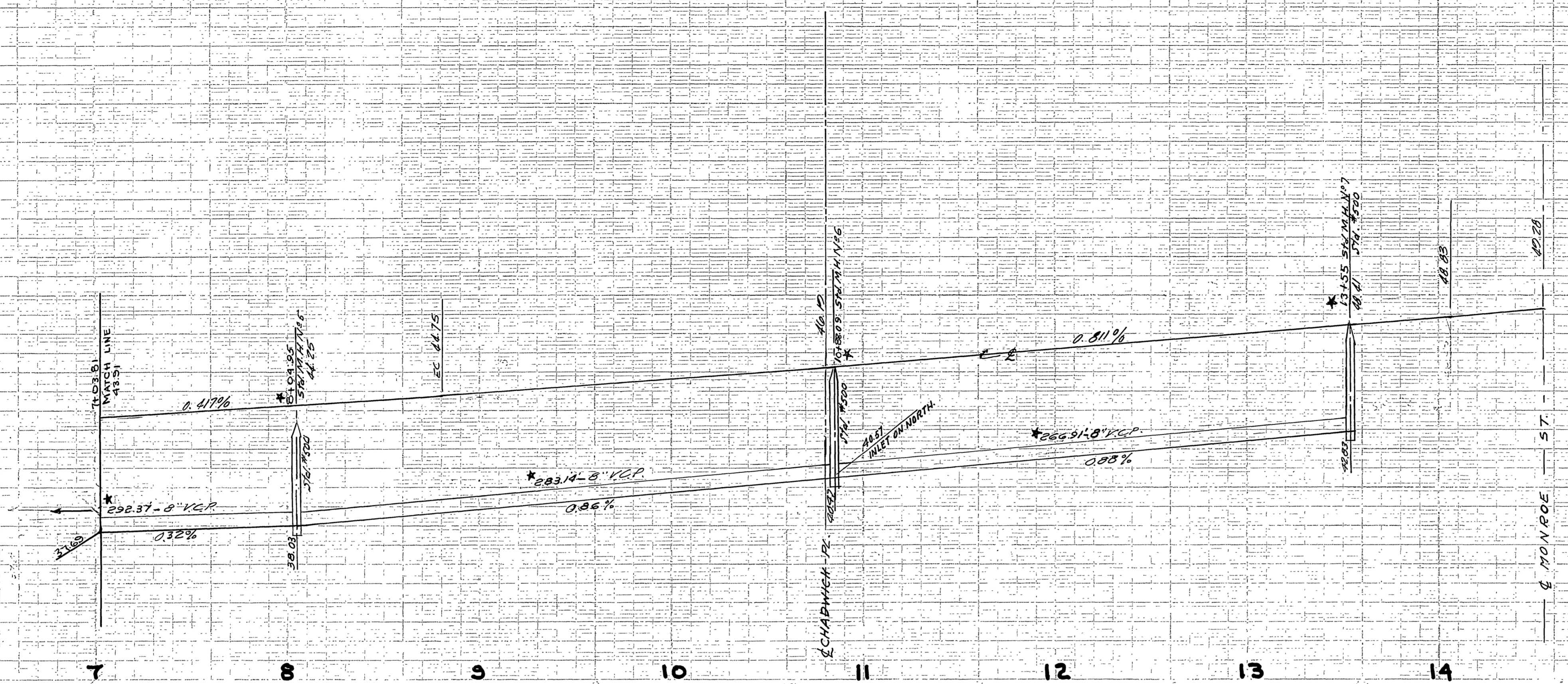
APPROVED BY: *[Signature]*
 DIRECTOR OF PUBLIC WORKS

S-164
 SHEET 1 OF 3

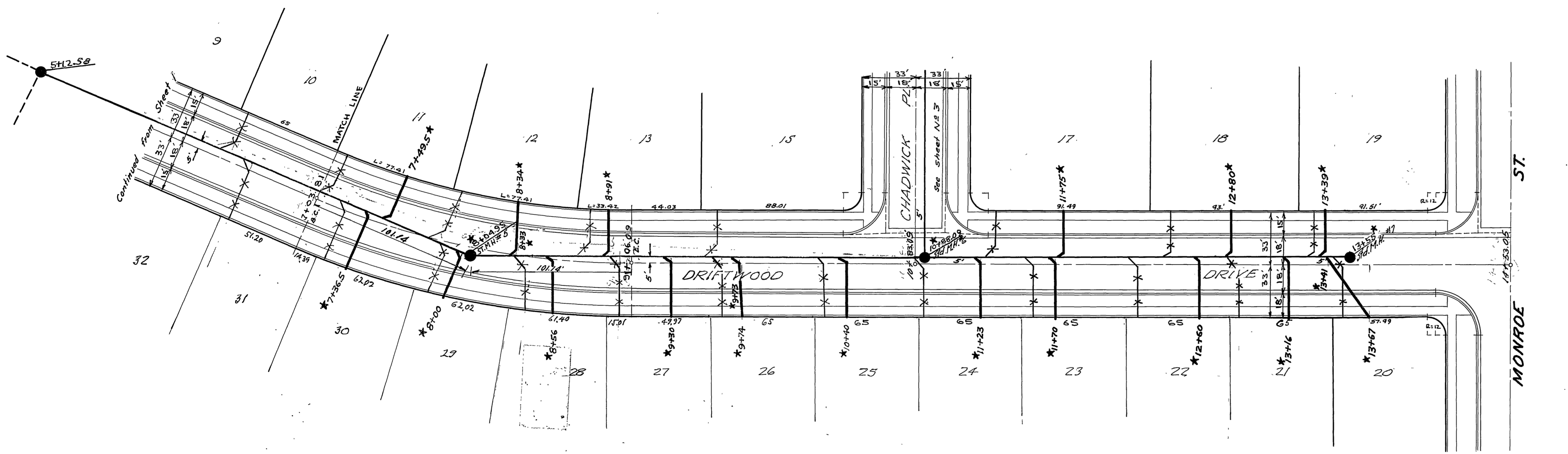
DATE: 3-9-59

★ = "As Built" H.Ball 5-28-59

SUBMITTED



B.M. P.K. nail in SWly curb return
at Monroe St. & Fernbrooke Ave
Elev. = 778.64



Laterals to be located in the field.

THIS PLAN PREPARED IN THE OFFICES OF
VOORHEIS - TRINDE & NELSON INC.
935B WESTMINSTER AVENUE
WESTMINSTER CALIFORNIA

C.R. Nelson
C.R. NELSON R.E. 8781

CITY OF RIVERSIDE CALIFORNIA
DEPARTMENT OF PUBLIC WORKS

SOL VISTA
SEWER

DRIFTWOOD DRIVE
SCALE: HORIZ: 1"=40'
VERT: 1"=4'

APPROVED BY
W. J. ...
DIRECTOR OF PUBLIC WORKS

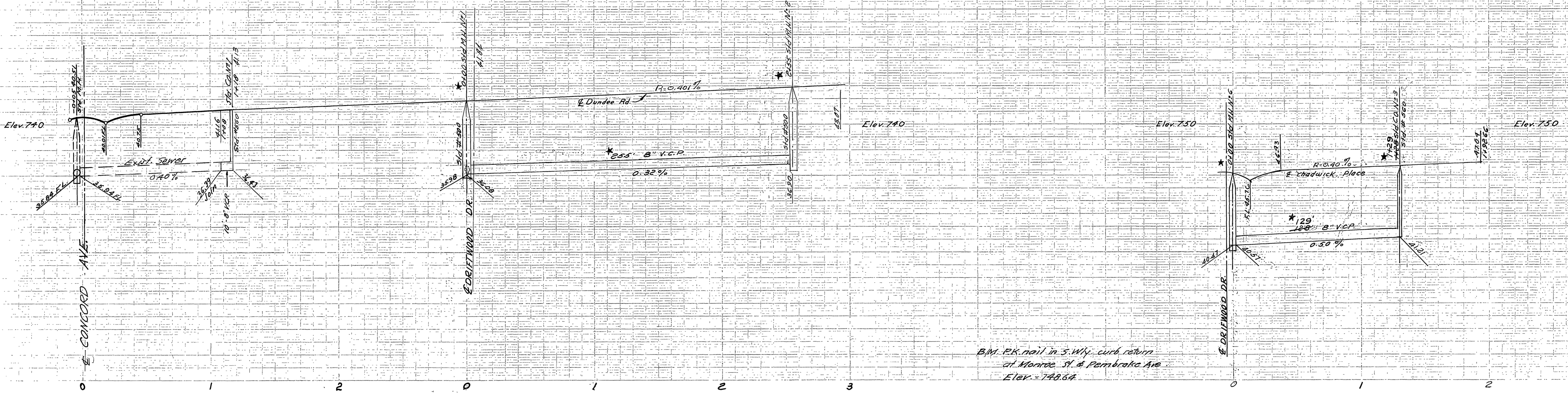
5-164

DATE 3-9-59

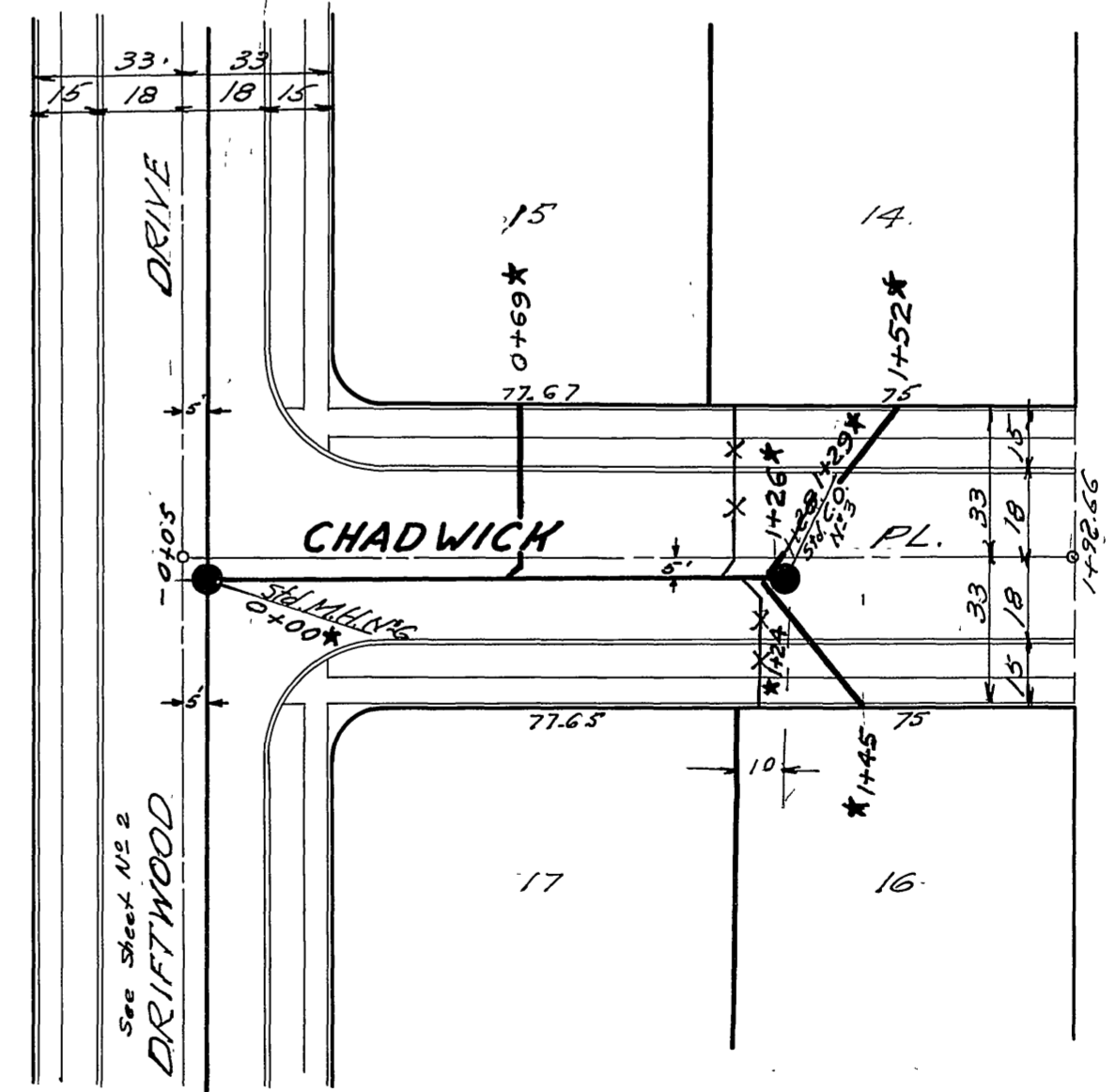
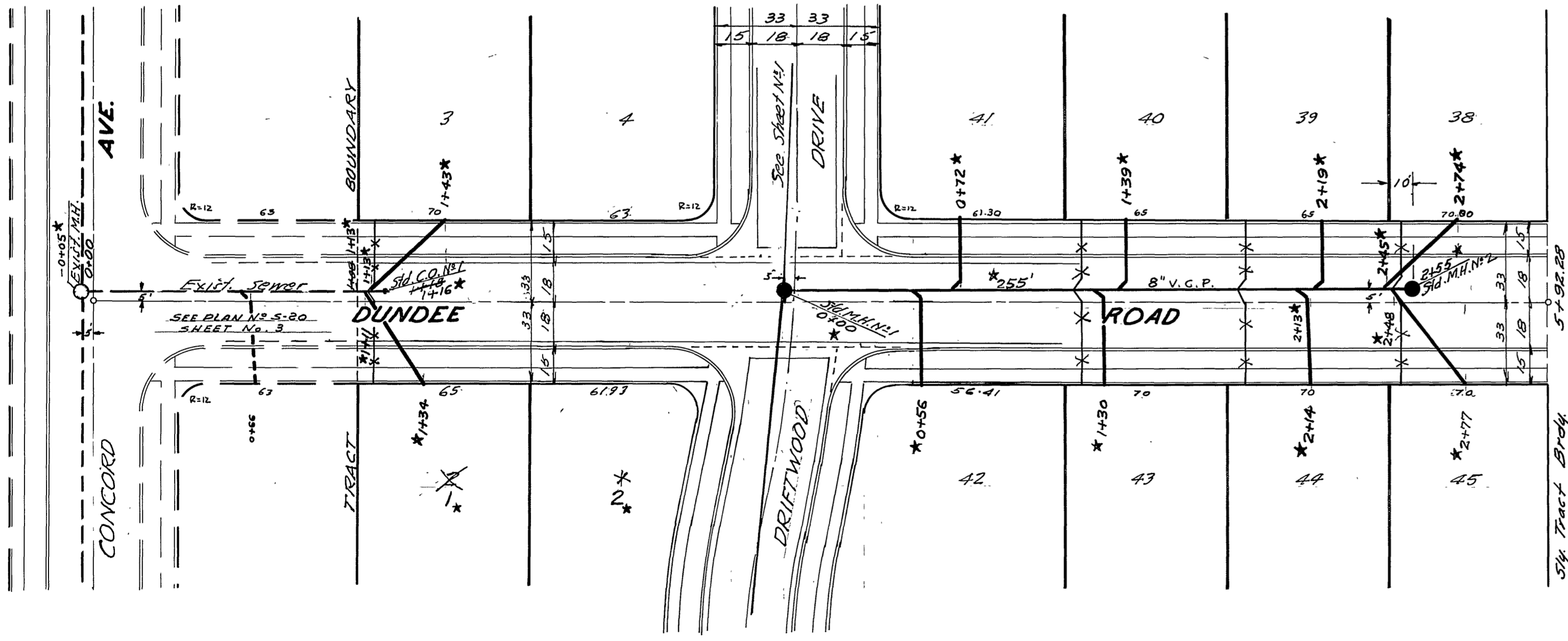
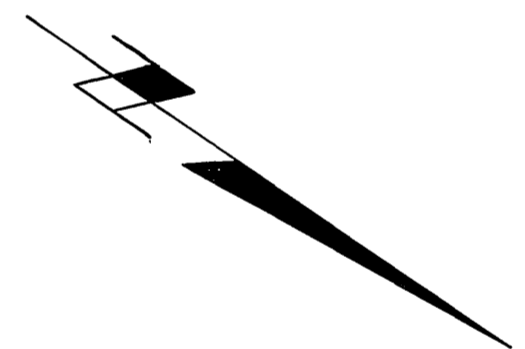
SHEET 2 OF 3

★ = "As Built" H. Ball 5-27-59

SUBMITTED



B.M. P.K. nail in S.W. curb return
at Monroe St. & Pembroke Ave
Elev. = 743.64



Laterals to be located in the field

★ = "As Built" H. Ball 5-28-59

THIS PLAN PREPARED IN THE OFFICES OF
VOORHEIS, TRINDLE & NELSON INC
325 B WEST MINSTER AVE
WEST MINSTER, CALIFORNIA
C.R. NELSON R.E. 8781

CITY OF RIVERSIDE CALIFORNIA
DEPARTMENT OF PUBLIC WORKS

SOL VISTA
SEWER
DUNDEE ROAD
CHADWICK PLACE
SCALE: HORIZ: 1"=40'
VERT: 1"=4'

APPROVED BY: [Signature]
DIRECTOR OF PUBLIC WORKS
DATE: 3-9-59
SHEET 3 OF 3

SUBMITTED 1-23-59