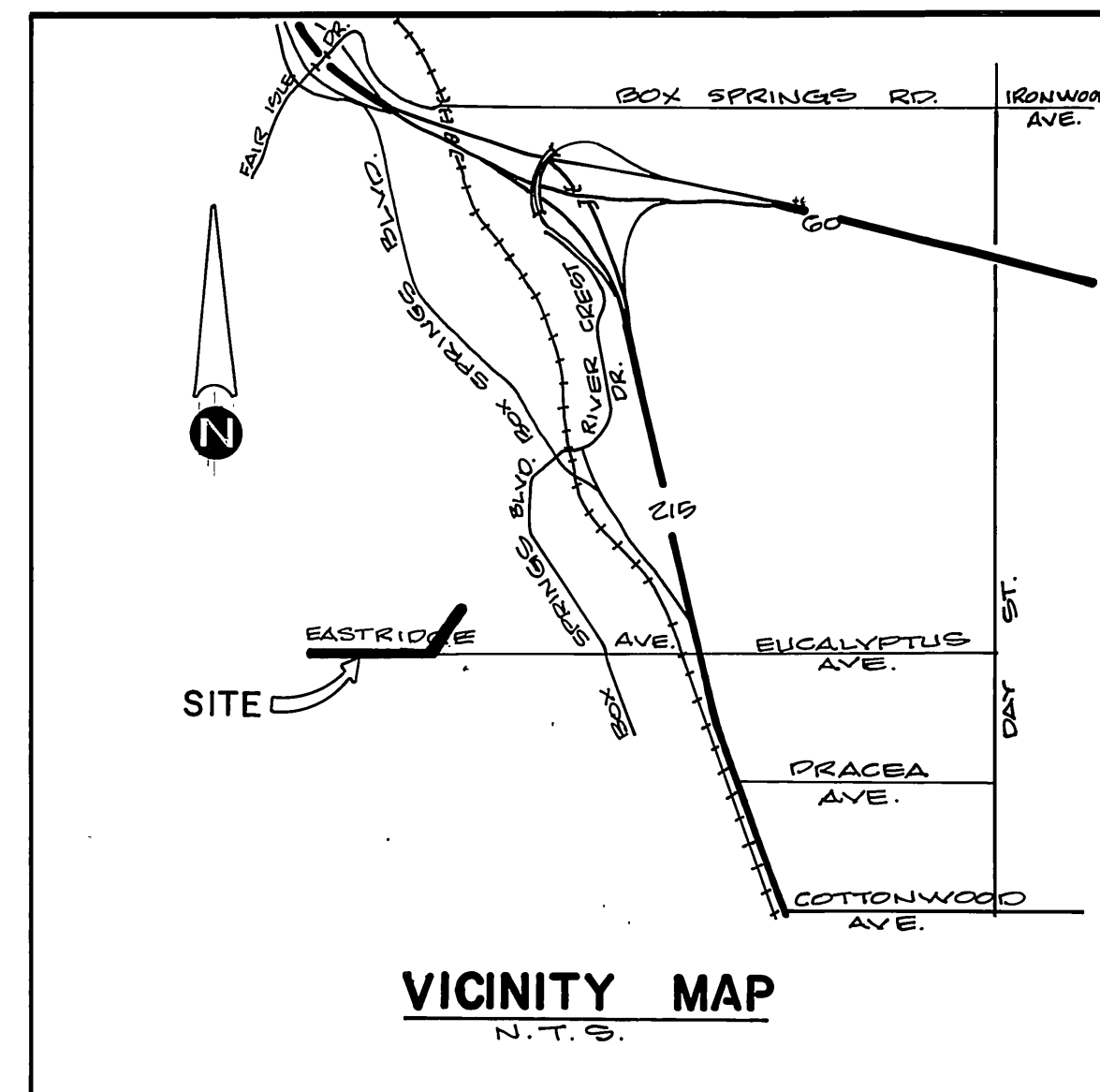


**LOCATION MAP**  
SCALE: 1" = 200'

**DESIGN CRITERIA**

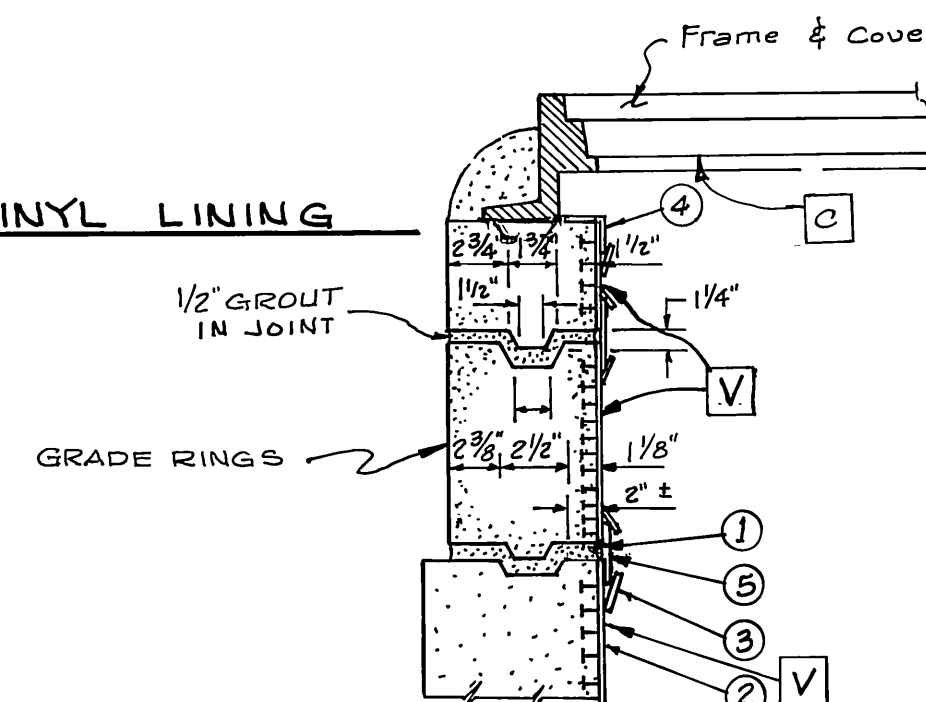
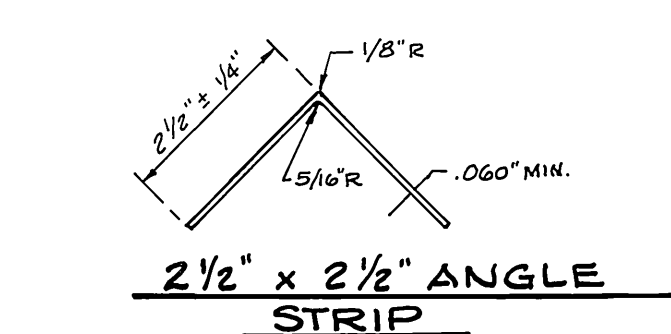
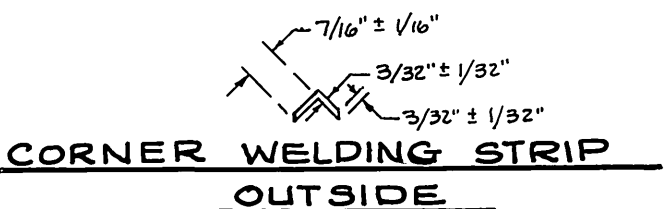
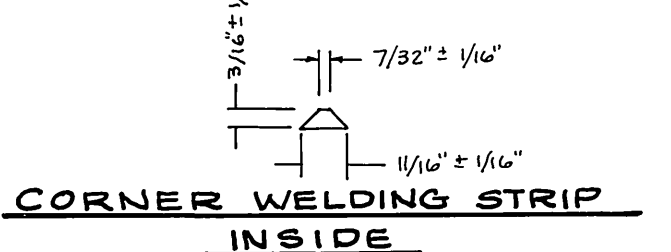
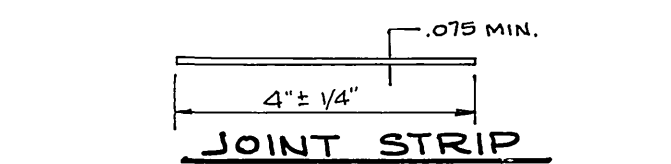
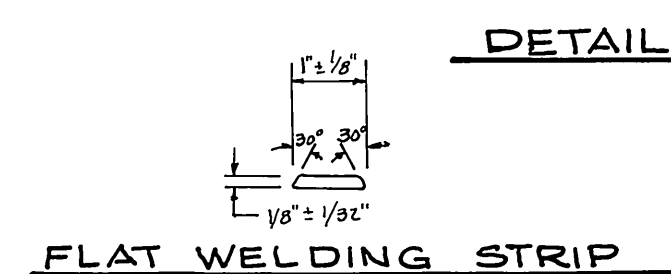
M.H. NO.	TRIBUTARY AC.	PEAK FLOW CFS (0.012 CFS PER AC.)	VELOCITY FPS
1	111.3	0.98	2.0
5	111.3	0.98	2.0
7	93.4	0.77 *	2.0

\* SMITH FOOD FACILITY PEAK FLOW = 385,000 GPD.

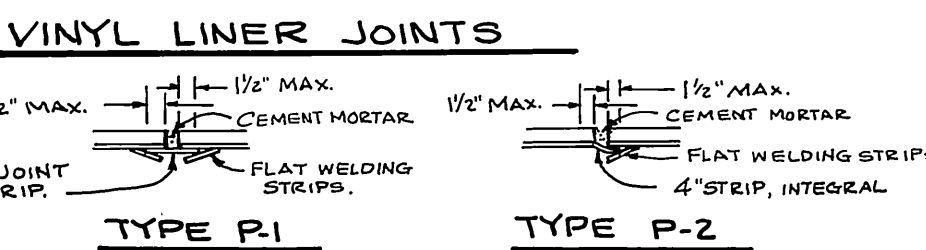


**SEWER GENERAL NOTES**

- IT SHALL BE THE RESPONSIBILITY OF THE CONTRACTOR TO CLEAR THE RIGHT OF WAY IN ACCORDANCE WITH THE PROVISIONS OF LAW AS IT AFFECTS EACH UTILITY INCLUDING IRRIGATION LINES AND APPURTENANCES AND AT NO COST TO THE CITY.
- CONSTRUCTION SHALL BE IN ACCORDANCE WITH THE CITY OF RIVERSIDE DEPARTMENT OF PUBLIC WORKS, STANDARD DRAWINGS, AND THE STANDARD SPECIFICATIONS FOR PUBLIC WORKS CONSTRUCTION, CURRENT EDITION.
- THE PRIVATE ENGINEER SIGNING THESE PLANS IS RESPONSIBLE FOR ASSURING THE ACCURACY AND ACCEPTABILITY OF THE WORK HEREON. IN THE EVENT OF DISCREPANCIES ARISING DURING CONSTRUCTION, THE PRIVATE ENGINEER SHALL BE RESPONSIBLE FOR DETERMINING AN ACCEPTABLE SOLUTION AND REVISING THE PLANS FOR APPROVAL BY THE CITY.
- THE DEVELOPER SHALL BE RESPONSIBLE FOR PRESERVING OR RE-ESTABLISHING AND REFERENCING SURVEY MONUMENTS DESTROYED, DISTURBED OR BURIED AS A RESULT OF CONSTRUCTION SHOWN HEREON.
- ALL FLAGGED ELEVATIONS SHALL BE STAKED IN THE FIELD BY THE PRIVATE ENGINEER.
- THE CONTRACTOR SHALL CALL IN A LOCATION REQUEST TO UNDERGROUND SERVICE ALERT (USA), PHONE NO. 1-800-422-4133, TWO WORKING DAYS BEFORE DIGGING. NO CONSTRUCTION PERMIT WILL BE ISSUED BY THE PUBLIC WORKS DEPARTMENT INVOLVING EXCAVATION FOR UNDERGROUND FACILITIES UNLESS THE APPLICANT HAS BEEN PROVIDED AN INQUIRY IDENTIFICATION NUMBER OF U.S.A.
- CONTRACTOR IS TO VERIFY EXISTING SEWER LOCATION AND ELEVATION PRIOR TO START OF CONSTRUCTION.
- LOCATION OF LATERALS TO BE DETERMINED IN THE FIELD AT THE DIRECTION OF THE OWNER. AVOID CONFLICT WITH PROPOSED AND/OR EXISTING FACILITIES.
- NO FINISHED FLOOR ELEVATION SHALL BE LESS THAN 4' ABOVE THE SEWER FLOW LINE AT POINT OF CONNECTION WITHOUT HAVING A PROPER BACKWATER VALVE INSTALLED IN THE LATERAL.
- A PLUG SHALL BE INSTALLED AND WILL REMAIN IN PLACE WHERE THE NEW SEWER CONNECTS WITH THE EXISTING SEWER UNTIL THE NEW SEWER IS ACCEPTED BY THE CITY.
- THE SEWER CONTRACTOR SHALL ADJUST MANHOLES TO FINAL GRADE AFTER PAVING IS COMPLETED.
- MANHOLES IN OPEN FIELDS SHALL BE SET TWO (2) FEET ABOVE GRADE.
- ALL MANHOLES DEEPER THAN 12' TO THE SHELF SHALL BE EQUIPPED WITH A SAFETY CLIMB AS MFG. BY NORTH CONSUMER SAFETY PRODUCT, OR APPROVED EQUAL.
- ALL PIPE BEDDINGS WILL BE PER CITY OF RIVERSIDE STANDARD NO. 482.



- PVC LINER INSTALLATION NOTES**
- SET MANHOLE SHAFT AND GRADE RINGS IN CEMENT GROUT ON TOP OF PVC LINER.
  - T-LOCK PVC LINER INSTALLED IN PIPE BY PIPE FABRICATOR.
  - 1-INCH WELD STRIP.
  - 2 1/2" x 2 1/2" ANGLE STRIP.
  - 4" x 1/4" JOINT STRIP.



**COATING AND LINING SCHEDULE**

- C** ALL EXPOSED INTERIOR SURFACES OF MANHOLE BASE, RINGS, FRAME AND COVER TO BE COATED WITH SANDON 100 EPOXY PRIMER/POLYURETHANE TOP COAT SYSTEM PER MANUFACTURERS RECOMMENDATIONS, OR APPROVED EQUAL.
- V** ALL EXPOSED INTERIOR SURFACES OF MANHOLE SHAFT TO BE LINED WITH "T-LOCK AMER PLATE" (WHITE) AS MANUFACTURED BY AMERON PROTECTIVE COATING DIVISION OR OWNER APPROVED EQUAL.

**BENCH MARK**

U.S.C. & G.S. DESIGNATION Z 749, RIVERSIDE COUNTY DESIGNATION 600-47-88, STANDARD BRASS DISK STAMPED Z 749 1945 ESTABLISHED BY C. & G.S. 1.7 MILES NORTHWEST ALONG THE ATCHISON, TOPEKA AND SANTA FE RAILWAY FROM THE STATION AT MARCH FIELD, SET BETWEEN THE TRACK AND U.S. HIGHWAY NO. 395 (I 215) 64.5 FEET SOUTHWEST OF THE SOUTHWEST EDGE OF THE HIGHWAY, 43.6 FEET NORTHEAST OF THE NORTHEAST RAIL OF TRACK, 20 FEET SOUTHEAST OF POST, IRON BENCH MARK DISK SET IN TOP OF A CONCRETE POST 0.4 FEET ABOVE GROUND.

DATE 1970 ELEVATION: 1536.119

REVIEWED BY  
WESTERN MUNICIPAL WATER DISTRICT  
SHEETS 1 THRU 5 OF 5  
Stem W. Appel  
ASSOCIATE ENGINEER  
R.C.E. 48109  
DATE: 4-29-93

ALBERT A. WEBB ASSOCIATES  
CIVIL ENGINEERS  
RIVERSIDE, CALIFORNIA  
3788 MCCRAY STREET 92504  
APPROVED BY *Matthew E. Webb* DATE 4/6/93  
R.E. No. 37385  
DESIGNED BY *W.R.* DRAWN BY *W.R.* CHECKED BY *W.R.* DATE 4/1/93



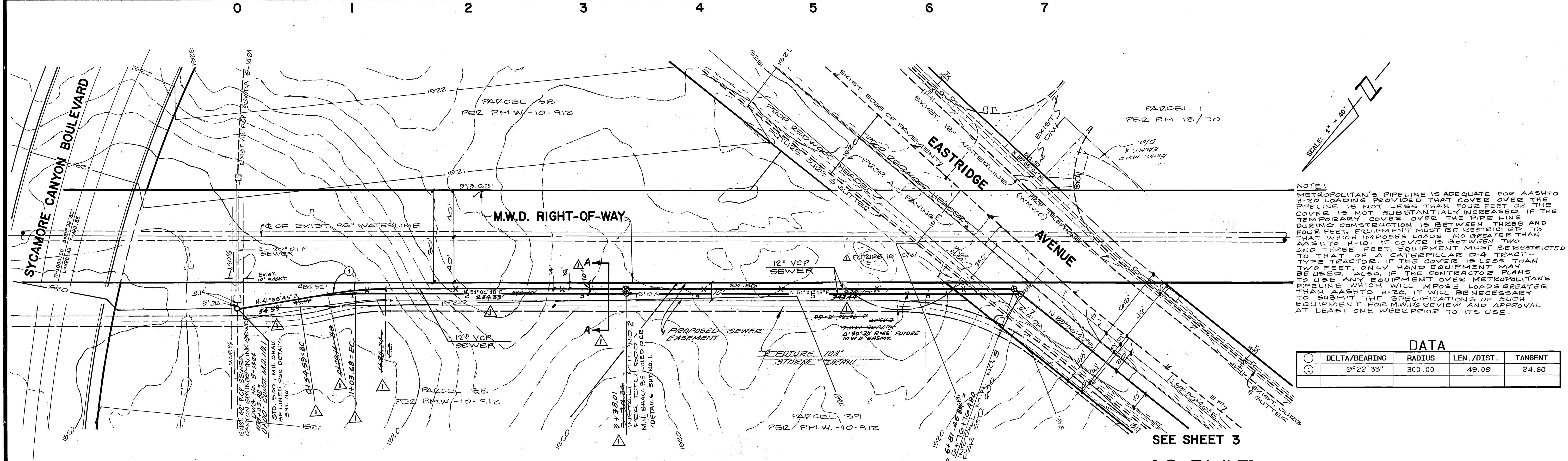
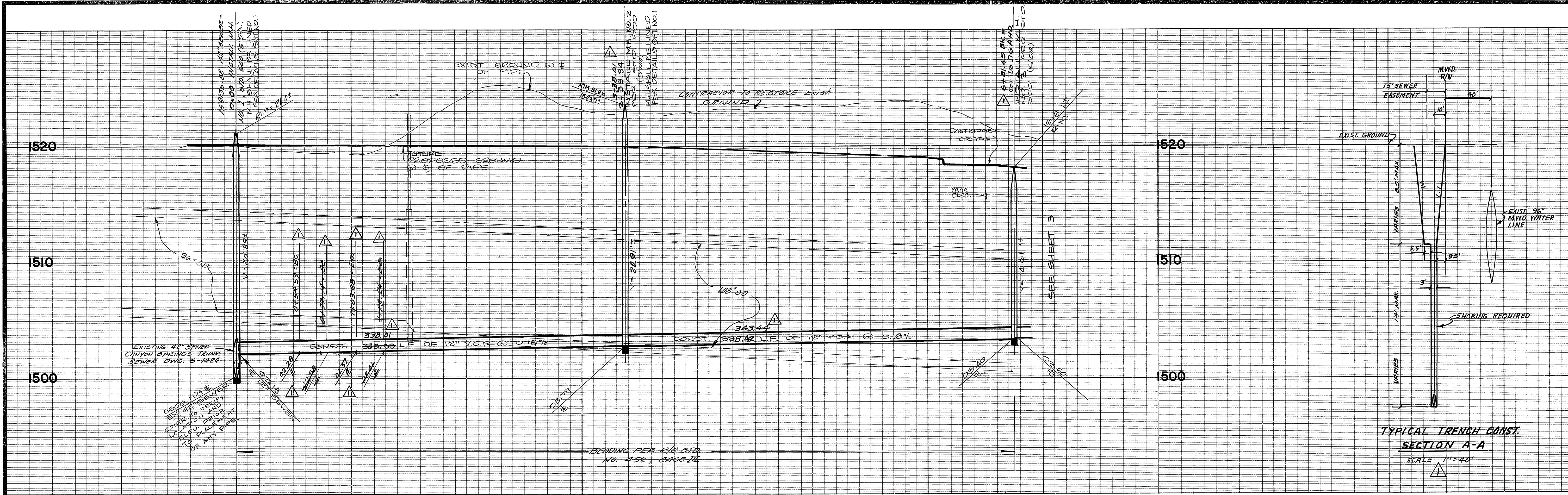
**\*AS-BUILT** 6 APRIL 1994

CITY OF RIVERSIDE, CALIFORNIA  
PUBLIC WORKS DEPARTMENT  
APPROVED BY *Matthew E. Webb* DATE 5/1/94  
PRINCIPAL ENGINEER  
TRAFFIC DIVISION  
DATE 5/13/93

SEWER PLAN & PROFILE  
EASTRIDGE AVENUE  
INDEX SHEET  
SCALE: AS SHOWN

ACCOUNT No. DRAWING NUMBER  
S-1650  
SHEET 1 OF 5  
90-3000-B





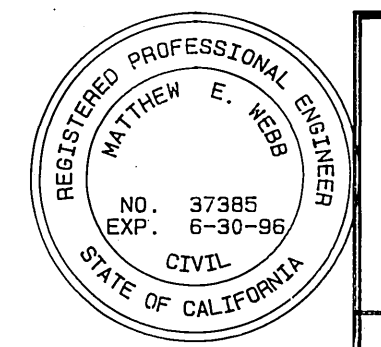
NOTE:  
 METROPOLITAN'S PIPELINE IS ADEQUATE FOR AASHTO H-20 LOADING PROVIDED THAT COVER OVER THE PIPELINE IS NOT LESS THAN FOUR FEET OR THE COVER IS NOT SUBSTANTIALLY INCREASED IF THE TEMPORARY COVER OVER THE PIPE LINE DURING CONSTRUCTION IS BETWEEN THREE AND FOUR FEET. EQUIPMENT MUST BE RESTRICTED TO THAT WHICH IMPOSES LOADS NO GREATER THAN AASHTO H-10. IF COVER IS BETWEEN TWO AND THREE FEET, EQUIPMENT MUST BE RESTRICTED TO THAT OF A GATED PULVER D-4 TRACTOR TYPE TRACTOR. IF THE COVER IS LESS THAN TWO FEET, ONLY HAND EQUIPMENT MAY BE USED. ALSO, IF THE CONTRACTOR PLANS TO USE ANY EQUIPMENT OVER METROPOLITAN'S PIPELINE WHICH WILL IMPOSE LOADS GREATER THAN AASHTO H-20, IT WILL BE NECESSARY TO SUBMIT THE SPECIFICATIONS OF SUCH EQUIPMENT FOR M.W.D.'S REVIEW AND APPROVAL AT LEAST ONE WEEK PRIOR TO ITS USE.

DATA

Δ	DELTA/BEARING	RADIUS	LEN./DIST.	TANGENT
①	9°22'33"	300.00	49.09	24.60

BENCH MARK

U.S.C. & G.S. DESIGNATION 7 749 RIVERSIDE COUNTY DESIGNATION 600-47-68 STANDARD BRASS DISK STAMPED 7 749 1945 ESTABLISHED BY C. & G.S. 1.7 MILES NORTHWEST ALONG THE ATCHISON, TOPEKA AND SANTA FE RAILWAY FROM THE STATION AT MARCH FIELD, SET BETWEEN THE TRACK AND U.S. HIGHWAY NO. 395 (1 215) 64.5 FEET SOUTHWEST OF THE SOUTHWEST EDGE OF THE HIGHWAY, 43.6 FEET NORTHEAST OF THE NORTHEAST RAIL OF TRACK, 20 FEET SOUTHEAST OF POST, IRON BENCH MARK DISK SET IN TOP OF A CONCRETE POST 0.4 FEET ABOVE GROUND.  
 DATE 1970 ELEVATION: 1536.119



ALBERT A. WEBB ASSOCIATES  
 CIVIL ENGINEERS  
 RIVERSIDE, CALIFORNIA  
 3788 MCCRAY STREET, 686-1070  
 APPROVED BY *Matthew E. Webb* DATE 4/6/93  
 R.E. No. 37385  
 W.O. 90-3000 FOR CITY OF RIVERSIDE F.B. 1034

REVISIONS  
 Relocated 12" Sewer Added Sec. A-A  
 DATE 4/13/93  
 DESIGNED BY *WLB* DRAWN BY *WLB* CHECKED BY *WLB*

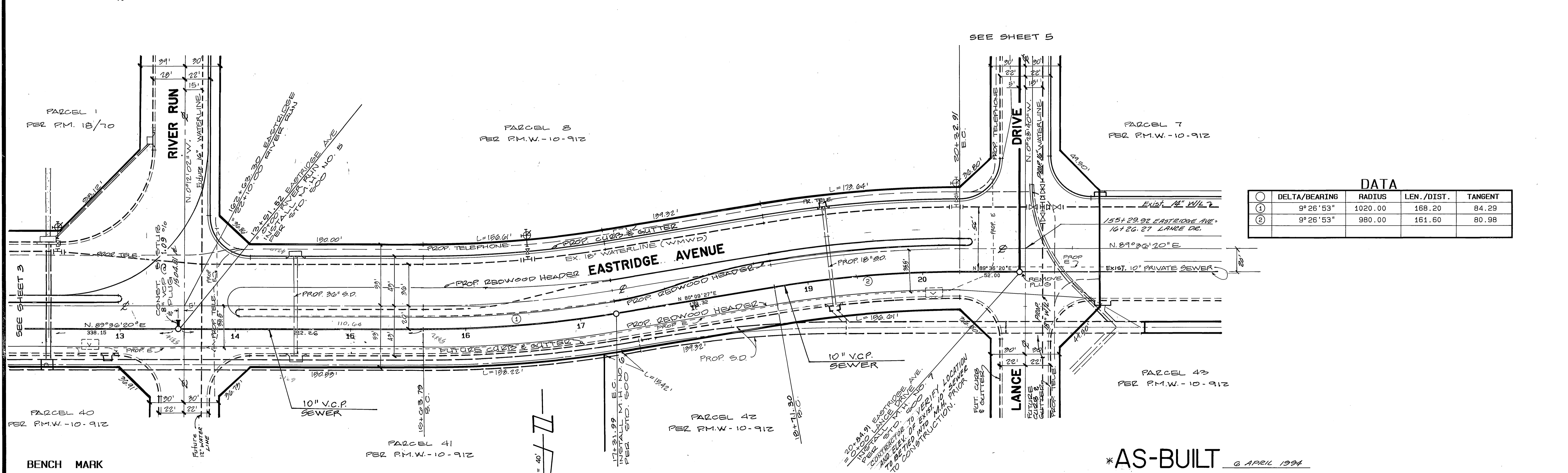
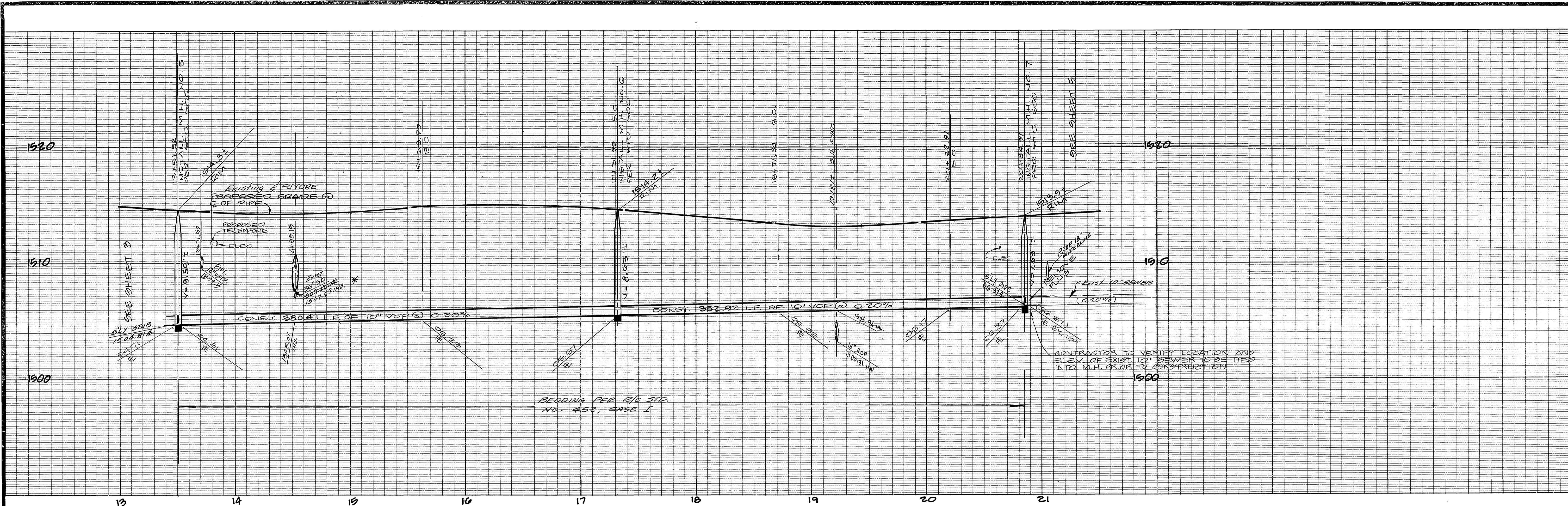
CITY OF RIVERSIDE, CALIFORNIA  
 PUBLIC WORKS DEPARTMENT  
 APPROVED BY *Raymond*  
 DIRECTOR OF PUBLIC WORKS  
 DATE 3/13/93

ACCOUNT No. \_\_\_\_\_  
 DRAWING NUMBER  
**S-1650**  
 SHEET **2** OF **5**  
 SCALE: HORIZ.: 1" = 40' VERT.: 1" = 4'  
 90-3000-B









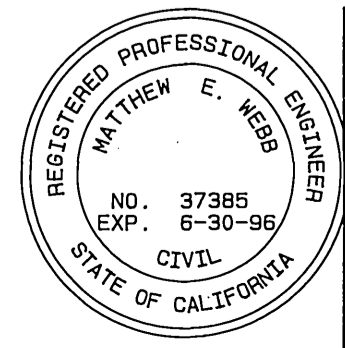
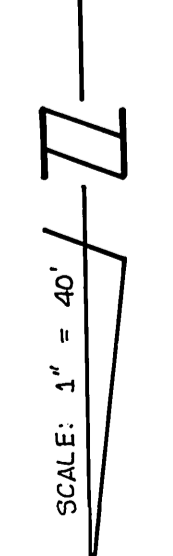
**DATA**

DELTA/BEARING	RADIUS	LEN./DIST.	TANGENT
① 9° 26' 53"	1020.00	168.20	84.29
② 9° 26' 53"	980.00	161.60	80.98

**BENCH MARK**

U.S.C. & G.S. DESIGNATION 2 749, RIVERSIDE COUNTY DESIGNATION 600-47-68. STANDARD BRASS DISK STAMPED 2 749 1945 ESTABLISHED BY C. & G. S., 1.7 MILES NORTHWEST ALONG THE ATCHISON, TOPEKA AND SANTA FE RAILWAY FROM THE STATION AT WARCH FIELD, SET BETWEEN THE TRACK AND U.S. HIGHWAY NO. 395 (1 215') 64.5 FEET SOUTHWEST OF THE SOUTHWEST EDGE OF THE HIGHWAY, 43.6 FEET NORTHWEST OF THE NORTHEAST RAIL OF TRACK, 20 FEET SOUTHEAST OF POST, IRON BENCH MARK DISK SET IN TOP OF A CONCRETE POST 0.4 FEET ABOVE GROUND.

DATE 1970 ELEVATION: 1536.119



**ALBERT A. WEBB ASSOCIATES**  
 CIVIL ENGINEERS  
 RIVERSIDE, CALIFORNIA  
 3788 MCCRAY STREET 686-1070  
 APPROVED BY *Matthew E. Webb* DATE 4/6/93  
 R.E. No. 37385  
 W.O. 90-3000 FOR: CITY OF RIVERSIDE F.B. 1034

MARK	REVISIONS	APPR. DATE

**CITY OF RIVERSIDE, CALIFORNIA**  
 PUBLIC WORKS DEPARTMENT

APPROVED BY: *[Signature]* DATE: 5/12/93  
 BY: *[Signature]* DATE: 5/12/93  
 PARK DEPARTMENT  
 TRAFFIC DIVISION  
 CHIEF PUB. WKS. ENGR. *[Signature]*

**SEWER PLAN & PROFILE**  
**EASTRIDGE AVENUE**

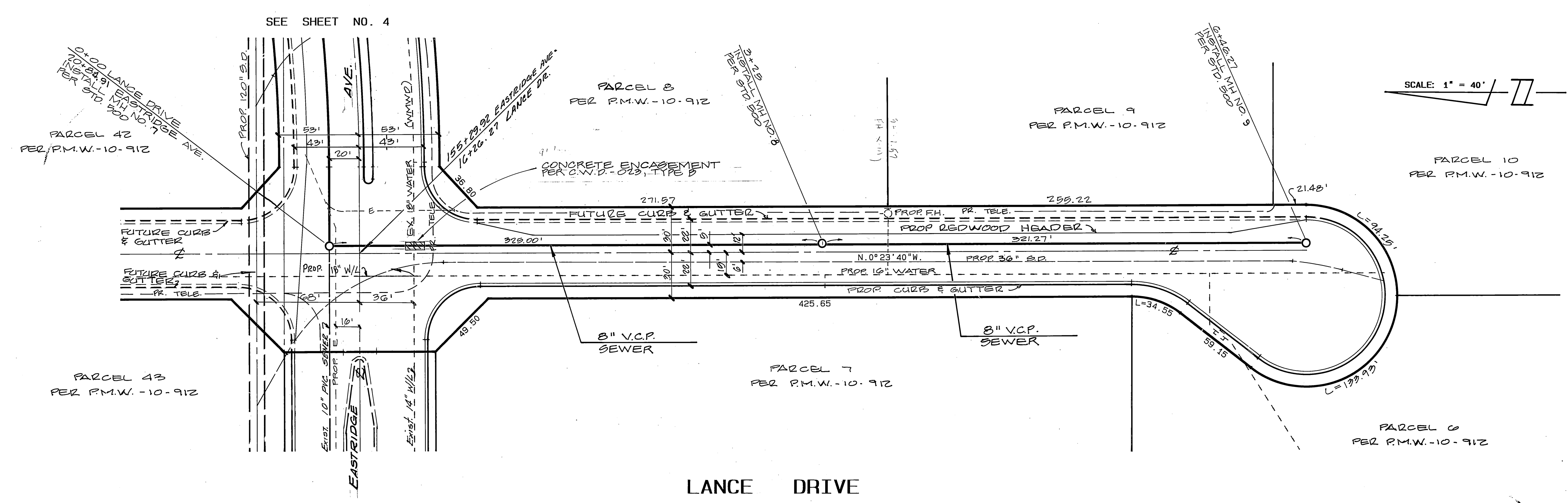
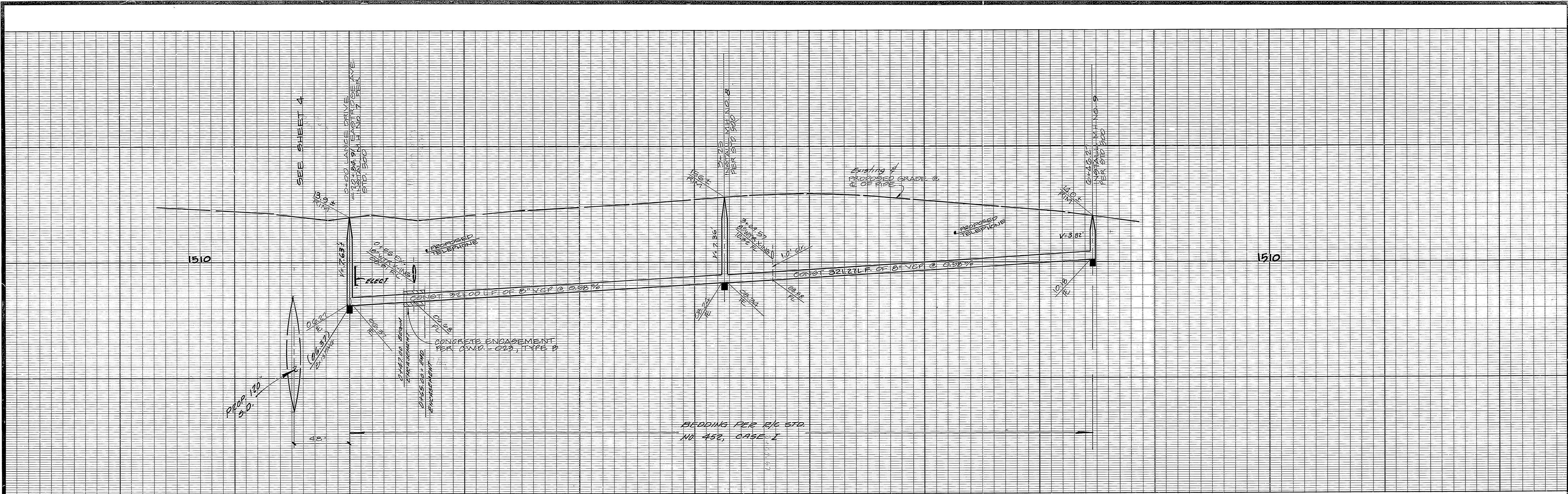
SCALE: HORIZ.: 1" = 40' VERT.: 1" = 4'

ACCOUNT No. **S-1650**  
 DRAWING NUMBER  
 SHEET **4** OF **5**  
 90-3000-B

**\*AS-BUILT** 6 APRIL 1994

INDEXED 7-7-94 LH





SCALE: 1" = 40'

**BENCH MARK**

U.S.C. & G.S. DESIGNATION 7 749 RIVERSIDE COUNTY DESIGNATION 600-47-58 STANDARD BRASS DISK STAMPED 7 749 1945 ESTABLISHED BY C. & G.S. 1.7 MILES NORTHWEST ALONG THE ATCHISON, TOPEKA AND SANTA FE RAILWAY FROM THE STATION AT MARCH FIELD, SET BETWEEN THE TRACK AND U.S. HIGHWAY NO. 395 (I 215) 64.5 FEET SOUTHWEST OF THE SOUTHWEST EDGE OF THE HIGHWAY, 43.6 FEET NORTHEAST OF THE NORTHEAST RAIL OF TRACK, 20 FEET SOUTHWEST OF POST, IRON BENCH MARK DISK SET IN TOP OF A CONCRETE POST 0.4 FEET ABOVE GROUND.

DATE 1970 ELEVATION: 1536.119



**ALBERT A. WEBB ASSOCIATES**  
 CIVIL ENGINEERS  
 RIVERSIDE, CALIFORNIA  
 3788 MCCRAY STREET 686-1070  
 APPROVED BY *Matthew E. Webb* DATE 4/6/93  
 R.E. No. 37385

MARK	REVISIONS	APPR.	DATE

CITY OF RIVERSIDE, CALIFORNIA  
 PUBLIC WORKS DEPARTMENT

APPROVED BY *[Signature]* DATE 5/13/93  
 CHIEF PUB. WKS. ENGR.

**SEWER PLAN & PROFILE**  
**LANCE DRIVE**

SCALE: HORIZ.: 1" = 40' VERT.: 1" = 4'

ACCOUNT No. \_\_\_\_\_  
 DRAWING NUMBER  
**S-1650**  
 SHEET **5** OF **5**  
 90-3000-B

\*AS-BUILT 6 APRIL 1994

INDEXED 7-7-94 LH