

- CONSTRUCTION NOTES**
- ① INSTALL 8" VCP SEWER MAIN
 - ② INSTALL MANHOLE PER CITY STND 500
 - ③ INSTALL 4" SEWER LATERAL PER CITY STND 562 (WITH 4" CLEANOUT AT PROPERTY LINE PER CITY STND.560)
 - ④ MEET EXISTING MANHOLE/CLEANOUT - CONSTRUCT NEW MANHOLE PER STND. 500 (RE-CONTOUR BOTTOM FOR PROPER FLOW)
 - ⑤ INSTALL 4" SEWER LATERAL TO EXISTING MAIN (EXISTING MAIN SHALL BE CORE DRILLED)
 - ⑥ ENCASE SEWER PER DETAIL CND-022 & CWP1023

Underground Service Alert
 Call: TOLL FREE
1-800-422-4133
 TWO WORKING DAYS BEFORE YOU DIG

APPROVED BY	DATE	BY

CITY OF RIVERSIDE WATER SYSTEM
 APPROVED *Richard D. ...* 10-20-93
 DATE
 VOID UNLESS SIGNED FROM THIS DATE

BENCHMARK
 CITY BENCHMARK #G5-A
 BEING A BRASS DISC STAMPED "G5-A"
 LOCATED AT THE INTERSECTION OF
 MAGNOLIA AVENUE AND ADAMS
 STREET.
 ELEV. 797.890

THATCHER ENGINEERING & ASSOCIATES
 34636 COUNTY LINE RD. STE. 34
 YUCAIPA, CA. 92399
 (909) 795-1419
 CIVIL ENGINEERING

MELVIN W. THATCHER III
 No. 39964
 CIVIL ENGINEERING
 STATE OF CALIFORNIA

DESIGNED BY MWI DRAWN BY KM CHECKED BY MWI

MARK	REVISIONS	APPR. DATE

CITY OF RIVERSIDE PUBLIC WORKS DEPARTMENT

APPROVED BY *[Signature]* DATE *11/20/93*
 PRINCIPAL ENGINEER
 PARK DEPARTMENT
 TRAFFIC DIVISION
 CHIEF P.W. ENGINEER

APPROVED BY *[Signature]* DATE *12/3/93*
 PUBLIC WORKS DIRECTOR

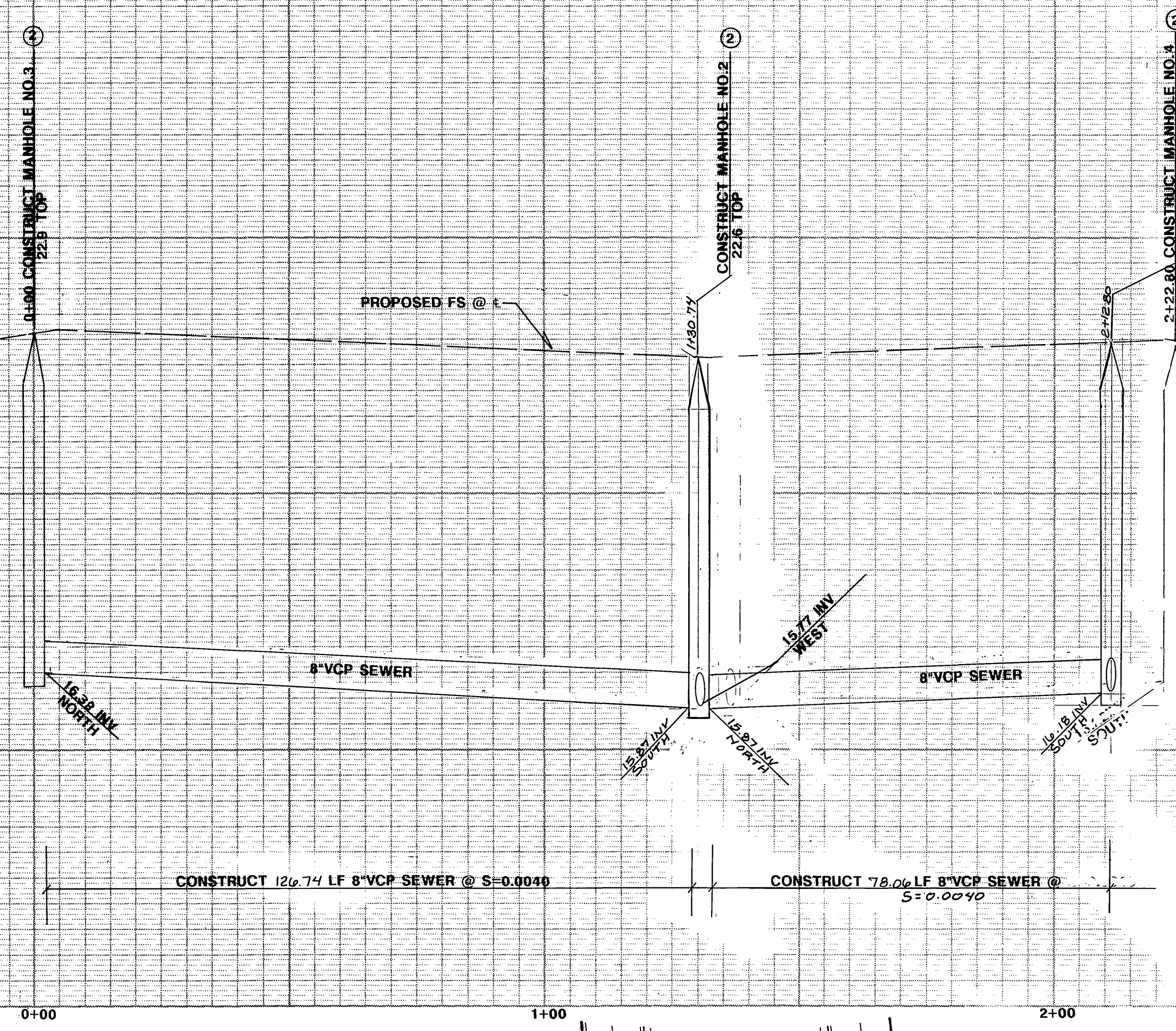
SEWER IMPROVEMENT PLANS
 TRACT 27731
CHARLENE WAY

ACCOUNT NUMBER:
 S-1657
 SHEET 2 OF 3
 VERTICAL SCALE: 1"=2'

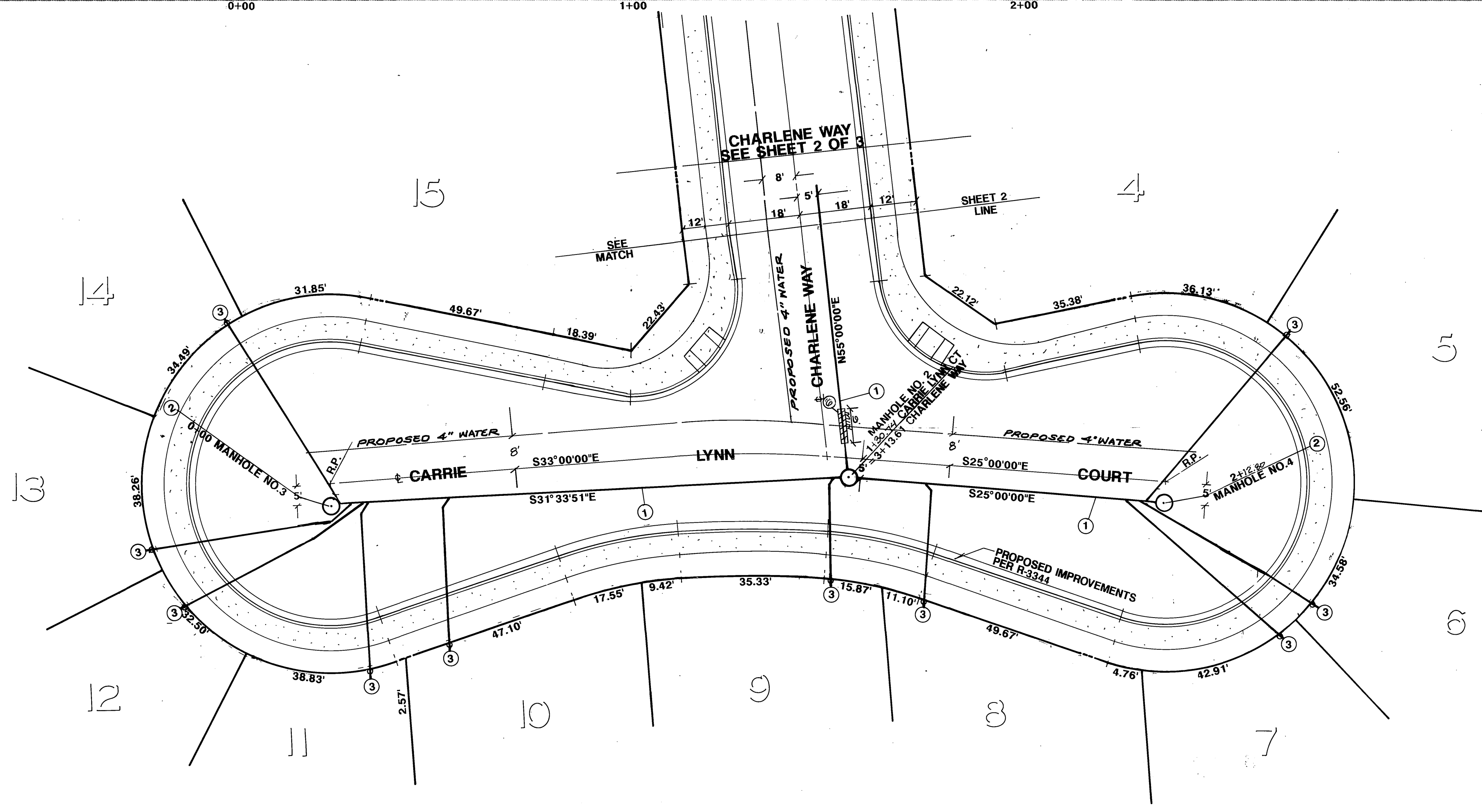
INDEXED 11-10-99 4H

820

820



PROFILE SCALE
 1"=20' HORIZ.
 1"=2' VERT.



CONSTRUCTION NOTES

- ① INSTALL 8" VCP SEWER MAIN
- ② INSTALL MANHOLE PER CITY STND 500
- ③ INSTALL 4" SEWER LATERAL PER CITY STND 562 (WITH 4" CLEANOUT AT PROPERTY LINE PER CITY STND. 560)
- ④ MEET EXISTING MANHOLE/CLEANOUT - CONSTRUCT NEW MANHOLE PER STND. 500 (RE-CONTOUR BOTTOM FOR PROPER FLOW)
- ⑤ INSTALL 4" SEWER LATERAL TO EXISTING MAIN (EXISTING MAIN SHALL BE CORE DRILLED)
- ⑥ ENCASE SEWER PER DETAIL CWD-022 & CWD-023

Underground Service Alert



Call: TOLL FREE
1-800-422-4133

TWO WORKING DAYS BEFORE YOU DIG

APPROVED BY	DATE	BY

CITY OF RIVERSIDE WATER SYSTEM
 Approved by: *Richard J. Decker* 10-28-93
 DATE: 10-28-93
 VOID DATE FROM THIS DATE

BENCHMARK
 CITY BENCHMARK #65-A BEING A BRASS DISC STAMPED "65-A" LOCATED AT THE INTERSECTION OF MAGNOLIA AVENUE AND ADAMS STREET. ELEV. 797.890

THATCHER ENGINEERING & ASSOCIATES
 34636 COUNTY LINE RD. STE. 34
 YUCAIPA, CA. 92399
 (909) 795-1419
 CIVIL ENGINEERING

REGISTERED PROFESSIONAL ENGINEER
 MELVIN W. THATCHER III
 No. 39964
 CIVIL ENGINEERING
 STATE OF CALIFORNIA

DESIGNED BY MWI DRAWN BY KM CHECKED BY MWI

MARK	REVISIONS	APPR. DATE

CITY OF RIVERSIDE PUBLIC WORKS DEPARTMENT

APPROVED BY	DATE	BY	APPROVED BY

PRINCIPAL ENGINEER: 11/14/93
 PARK DEPARTMENT: 11/14/93
 TRAFFIC DIVISION: 11/14/93
 CHIEF P.W. ENGINEER: 11/14/93

DATE: 12/3/93

SEWER IMPROVEMENT PLANS TRACT 27731 CARRIE LYNN COURT

ACCOUNT NUMBER:	S-1657
SHEET	3 OF 3
HORIZONTAL SCALE:	1"=20'
VERTICAL SCALE:	1"=2'