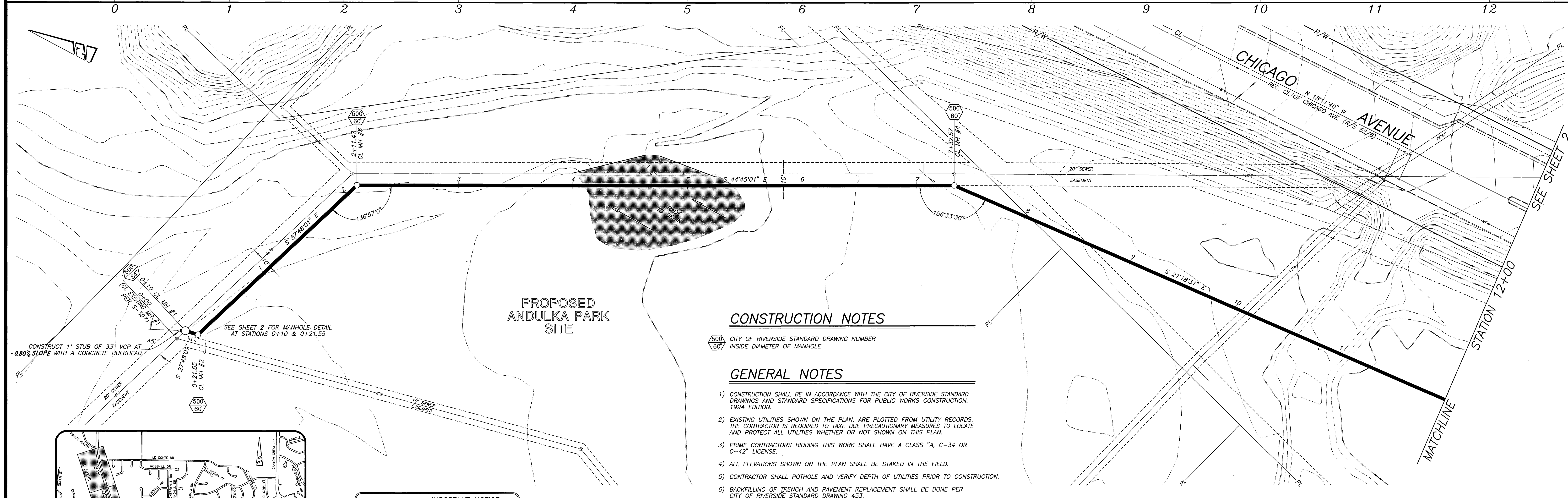


**BENCH MARK:**  
 P.K. NAIL & CITY ENGINEERS TAG IN CONCRETE BASE OF LIGHT STANDARD 6" N'LY OF THE N.E. CURB RETURN OF CHICAGO AVENUE AND CENTRAL AVENUE PER LL17/122.  
 ELEV. = 944.853



**CONSTRUCTION NOTES**

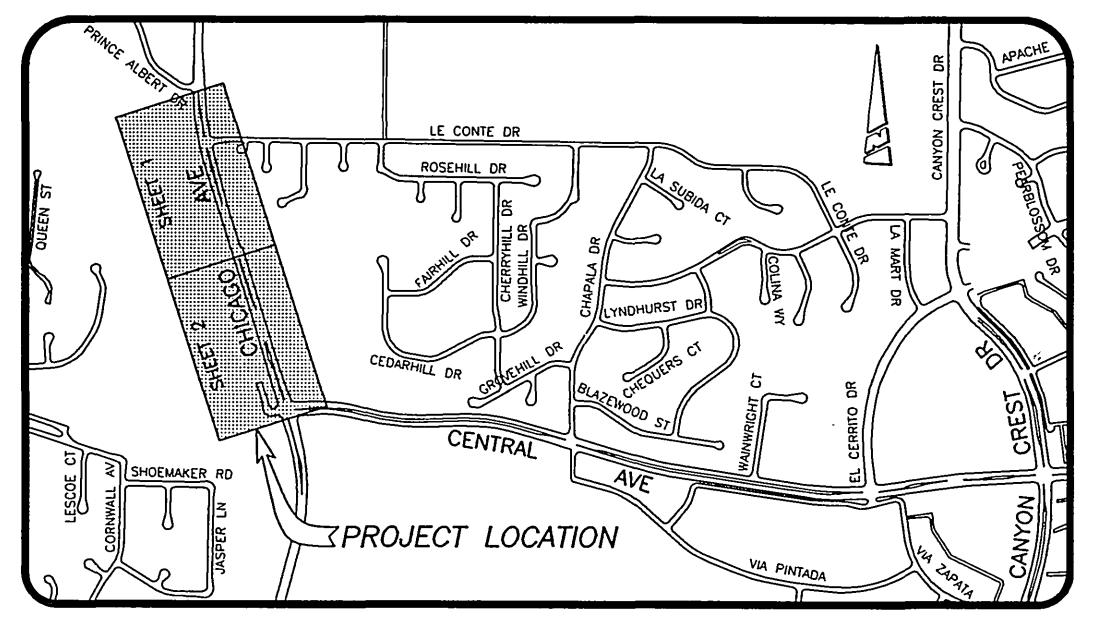
500/60 CITY OF RIVERSIDE STANDARD DRAWING NUMBER  
 INSIDE DIAMETER OF MANHOLE

**GENERAL NOTES**

- CONSTRUCTION SHALL BE IN ACCORDANCE WITH THE CITY OF RIVERSIDE STANDARD DRAWINGS AND STANDARD SPECIFICATIONS FOR PUBLIC WORKS CONSTRUCTION, 1994 EDITION.
- EXISTING UTILITIES SHOWN ON THE PLAN, ARE PLOTTED FROM UTILITY RECORDS. THE CONTRACTOR IS REQUIRED TO TAKE DUE PRECAUTIONARY MEASURES TO LOCATE AND PROTECT ALL UTILITIES WHETHER OR NOT SHOWN ON THIS PLAN.
- PRIME CONTRACTORS BIDDING THIS WORK SHALL HAVE A CLASS "A, C-34 OR C-42" LICENSE.
- ALL ELEVATIONS SHOWN ON THE PLAN SHALL BE STAKED IN THE FIELD.
- CONTRACTOR SHALL POTHOLE AND VERIFY DEPTH OF UTILITIES PRIOR TO CONSTRUCTION.
- BACKFILLING OF TRENCH AND PAVEMENT REPLACEMENT SHALL BE DONE PER CITY OF RIVERSIDE STANDARD DRAWING 453.

CONSTRUCT 1" STUB OF 33" VCP AT 45° SLOPE WITH A CONCRETE BULKHEAD.

SEE SHEET 2 FOR MANHOLE DETAIL AT STATIONS 0+10 & 0+21.55



**IMPORTANT NOTICE**  
 Section 4216/4217 of the Government Code requires a Dig Alert Identification Number to be issued before a "Permit to Excavate" will be void.  
 For your Dig Alert I.D. Number call CALL TOLL FREE 48 HOURS BEFORE YOU DIG UNDERGROUND SERVICE ALERT 1-800-422-4133

**ENGINEER IN RESPONSIBLE CHARGE**  
 DORNE K. GREENWOOD  
 R.C.E. No. 43965 expires 06/30/97  
 DATE 11/28/95



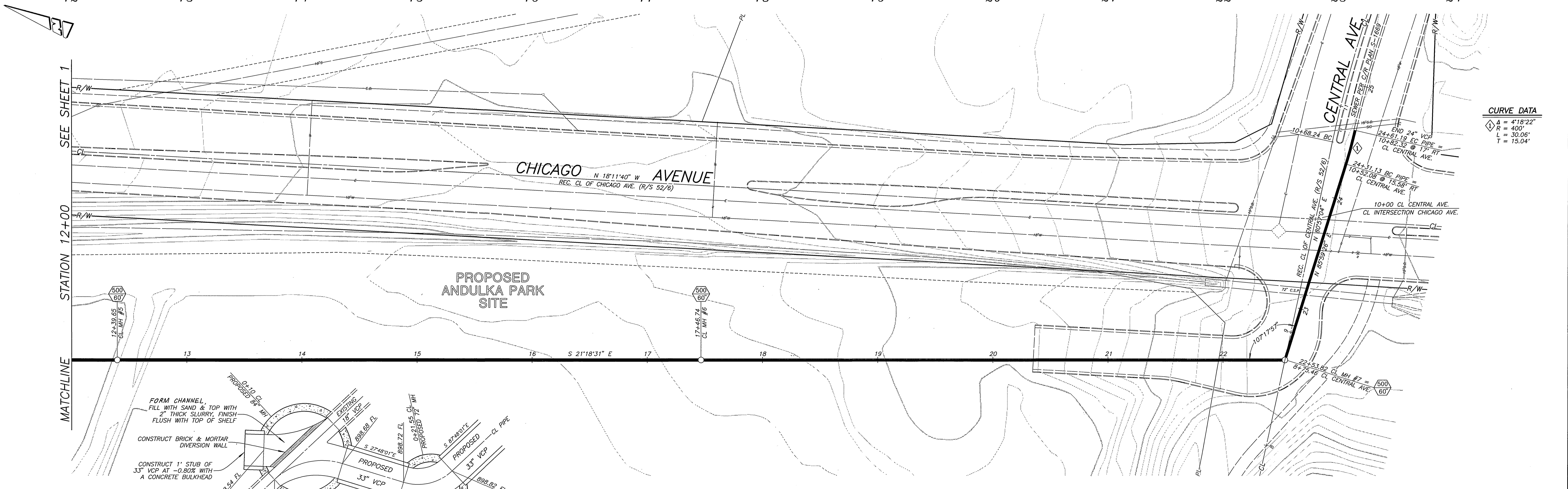
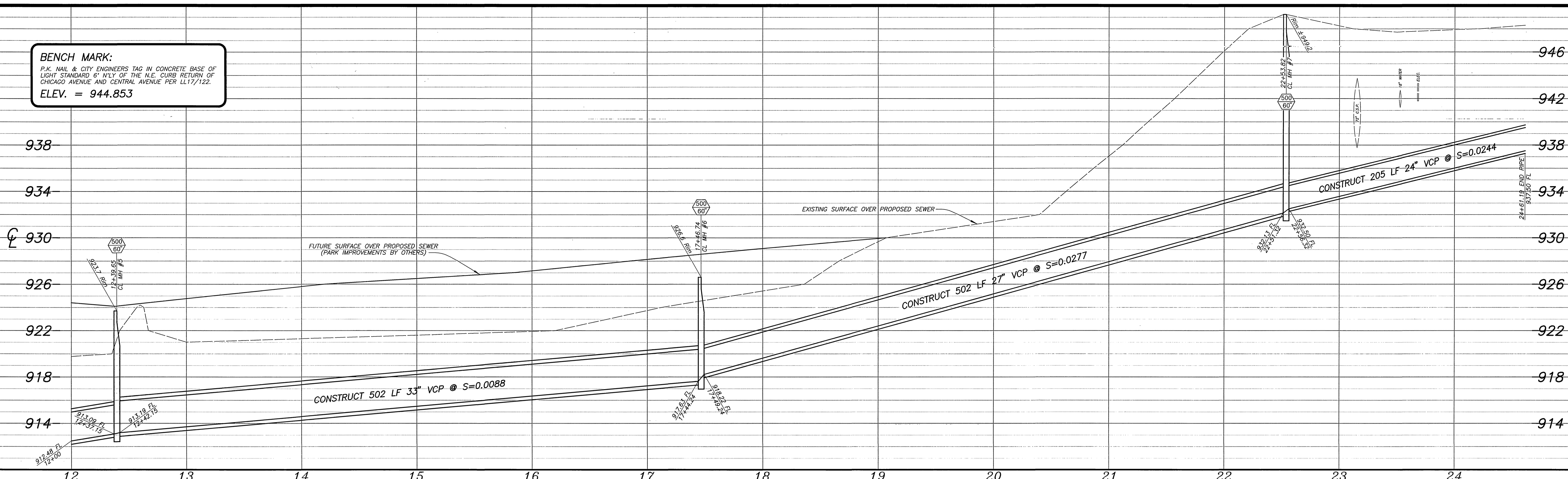
MARK	REVISIONS	APPR.	DATE

CITY OF RIVERSIDE, CALIFORNIA PUBLIC WORKS DEPARTMENT			
APPROVED BY	BY	DATE	APPROVED BY
DEPUTY P.W. DIRECTOR	PHC	12/22/95	BARRY BUCH
PRINCIPAL ENGINEER	REK	12/22/95	PUBLIC WORKS DIRECTOR
CHIEF P.W. INSPECTOR	REK	12/22/95	
PARKS DEPARTMENT	REK	12/22/95	
STREET SERVICES			
SURVEYOR	MSB	11-28-95	DATE 1/19/96
TRAFFIC DIVISION			

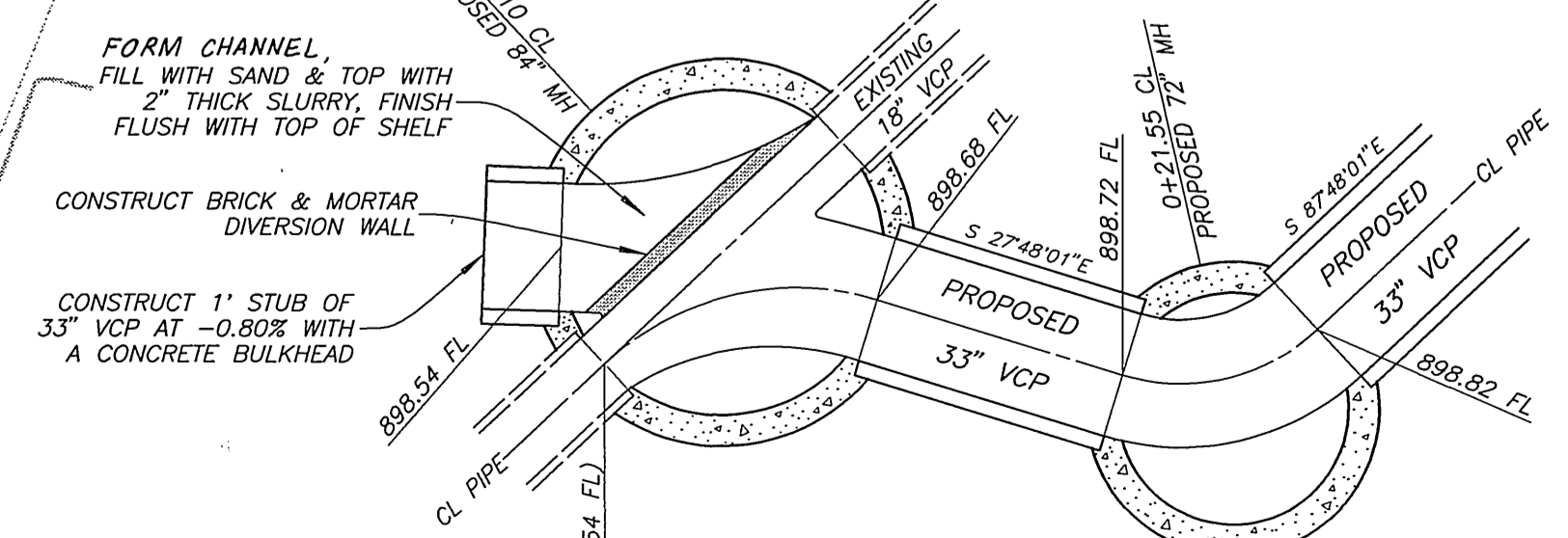
TEQUESQUITE SEWER AT ANDULKA PARK		ACCOUNT NUMBER
		551-741290-440301-40152
		<b>S-1667</b>
		SHEET 1 OF 2
HORIZONTAL SCALE: 1" = 40'		VERTICAL SCALE: 1" = 4'

INDEXED 1/9/96 LHL

**BENCH MARK:**  
 P.K. NAIL & CITY ENGINEERS TAG IN CONCRETE BASE OF  
 LIGHT STANDARD 6' N'LY OF THE N.E. CURB RETURN OF  
 CHICAGO AVENUE AND CENTRAL AVENUE PER LL17/122.  
 ELEV. = 944.853

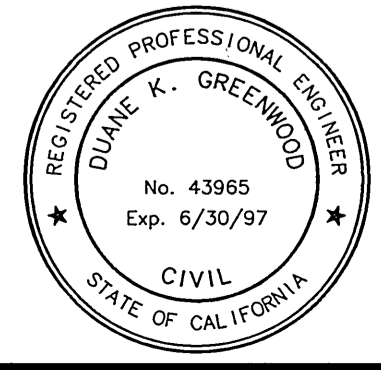


**CURVE DATA**  
 $\Delta = 4'18''22''$   
 $R = 400'$   
 $L = 30.06'$   
 $T = 15.04'$



**MANHOLE DETAIL AT  
 STATIONS 0+10 & 0+21.55**  
 SCALE: 1" = 4"

**ENGINEER IN RESPONSIBLE CHARGE**  
 Duane K. Greenwood  
 DUANE K. GREENWOOD  
 R.C.E. No. 43965 expires 06/30/97  
 DATE 11/28/95



MARK	REVISIONS	APPR.	DATE

**CITY OF RIVERSIDE, CALIFORNIA  
 PUBLIC WORKS DEPARTMENT**

APPROVED BY	BY	DATE	APPROVED BY
DEPUTY P.W. DIRECTOR	AMC	12/14/95	Barry Bee
PRINCIPAL ENGINEER			
CHIEF P.W. INSPECTOR			
PARKS DEPARTMENT			
STREET SERVICES			
SURVEYOR			
TRAFFIC DIVISION			

**TEQUESQUITE SEWER  
 AT  
 ANDULKA PARK**

ACCOUNT NUMBER  
 551-741290-440301-40152

**S-1667**  
 SHEET 2 OF 2

HORIZONTAL SCALE: 1" = 40'  
 VERTICAL SCALE: 1" = 4'

INDEXED 9/9/96 fH