

CURVE DATA				
Δ	R	L	T	
1	36' 9" 48"	144'	90.89'	47.02'
2	41' 39' 27"	959.79'	697.83'	365.14'
3	46' 21' 20"	236.30'	191.18'	101.17'
4	44' 34' 46"	951.79'	740.55'	390.16'
5	4' 55' 34"	951.79'	81.83'	40.94'
6	33' 35' 00"	316.47'	185.49'	95.50'

BENCHMARK
N & T ON CENTER OF SPILLWAY PT.
#10 PER LL 30/86
ELEVATION 789.90'



ENGINEER IN RESPONSIBLE CHARGE
Duane K. Greenwood
DUANE K. GREENWOOD
R.C.E. No. 43965 expires 6/30/97
DATE 5/26/95

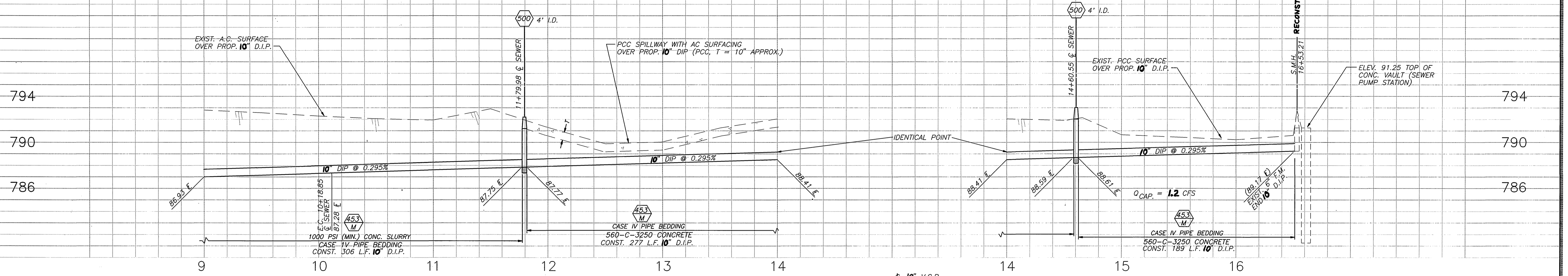
CITY OF RIVERSIDE, CALIFORNIA PUBLIC WORKS DEPARTMENT			
APPROVED BY	DATE	APPROVED BY	DATE
DEPUTY P.W. DIRECTOR	6/1/95	PUBLIC WORKS DIRECTOR	
PRINCIPAL ENGINEER	6/1/95		
CHIEF P.W. INSPECTOR	6/1/95		
TRAFFIC DIVISION	6/1/95		
SURVEYOR	6/1/95		
STREET SERVICES	6/1/95		
PARKS DEPARTMENT	6/1/95		

- GENERAL CONSTRUCTION NOTES:**
- CONSTRUCTION SHALL BE IN ACCORDANCE WITH THE CITY OF RIVERSIDE STANDARD DRAWINGS AND STANDARD SPECIFICATIONS FOR PUBLIC WORKS CONSTRUCTION, 1994 EDITION.
 - EXISTING UTILITIES SHOWN ON THE PLAN, ARE PLOTTED FROM UTILITY RECORDS. THE CONTRACTOR IS REQUIRED TO TAKE DUE PRECAUTIONARY MEASURES TO LOCATE AND PROTECT ALL UTILITIES WHETHER OR NOT SHOWN ON THIS PLAN.
- CONSTRUCTION LEGEND:**
- NUMBERS ABOVE 100 IN A HEXAGON ON THE PLAN REFER TO THE RESPECTIVE STANDARD DRAWING AND SHALL BE CONSTRUCTED ACCORDINGLY, UNLESS MODIFICATIONS ARE NOTED ON THE PLAN. ANY NUMBER SHOWN BELOW THE STANDARD DRAWING NUMBER INDICATES THE SPECIFIC ALTERNATE TO BE CONSTRUCTED.
 - CONSTRUCT PER STD. 453 EXCEPT FOR MODIFICATIONS SHOWN ON PLAN DETAIL SHT. 2.

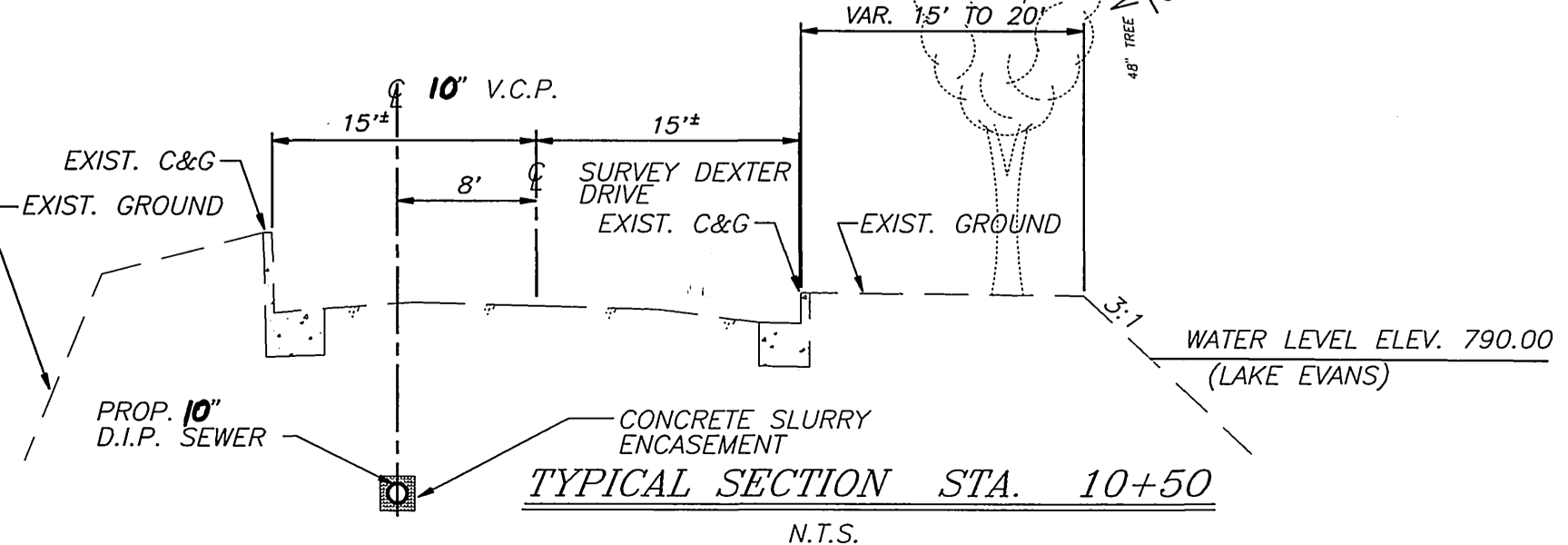
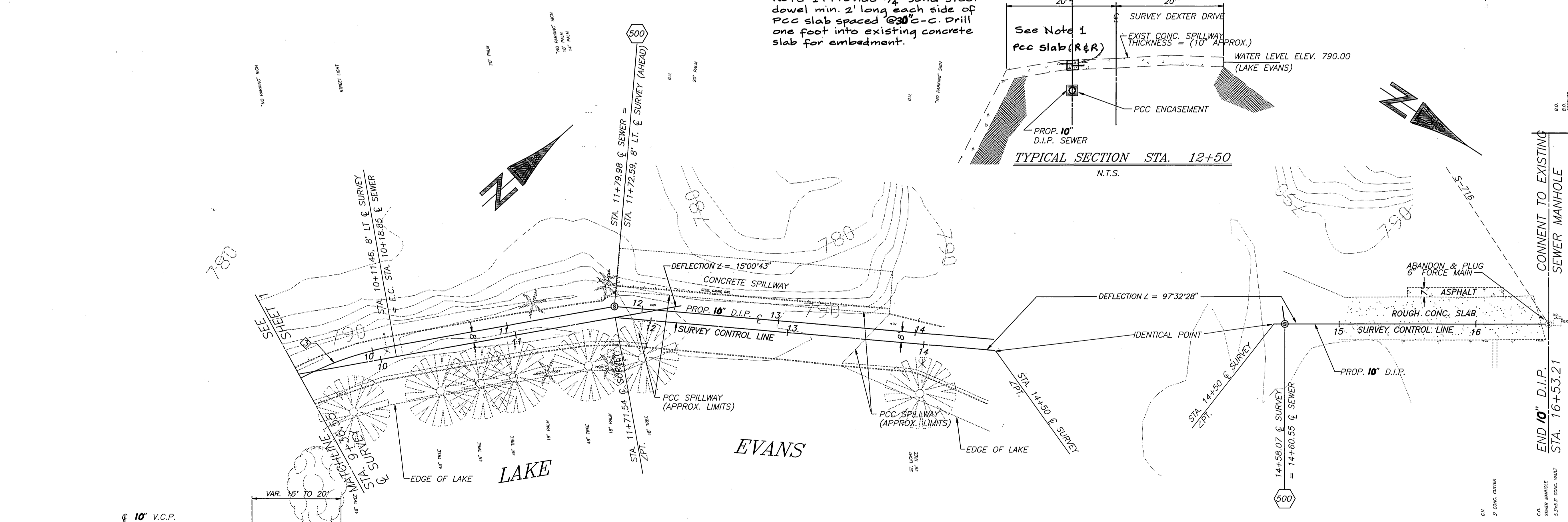
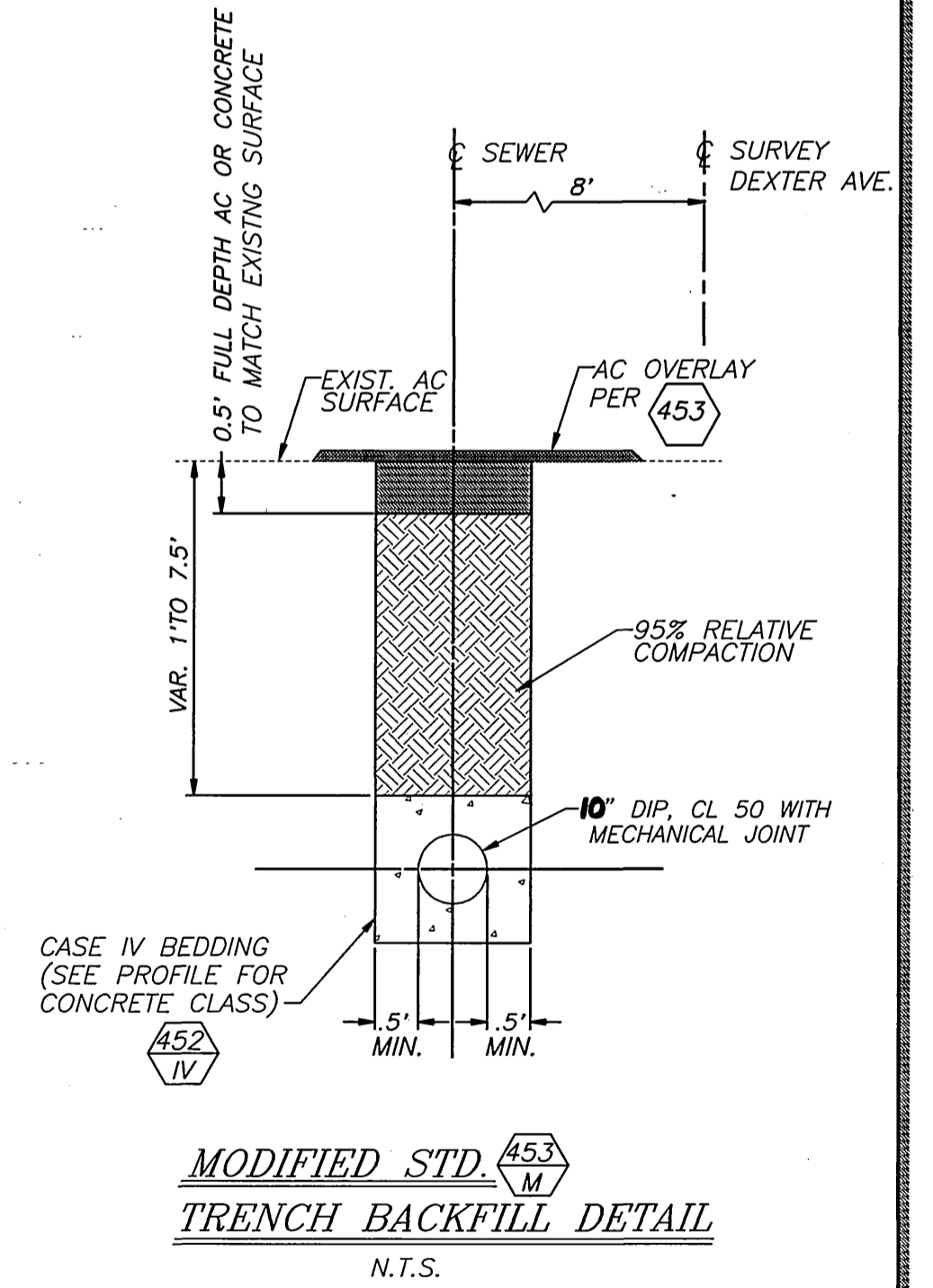
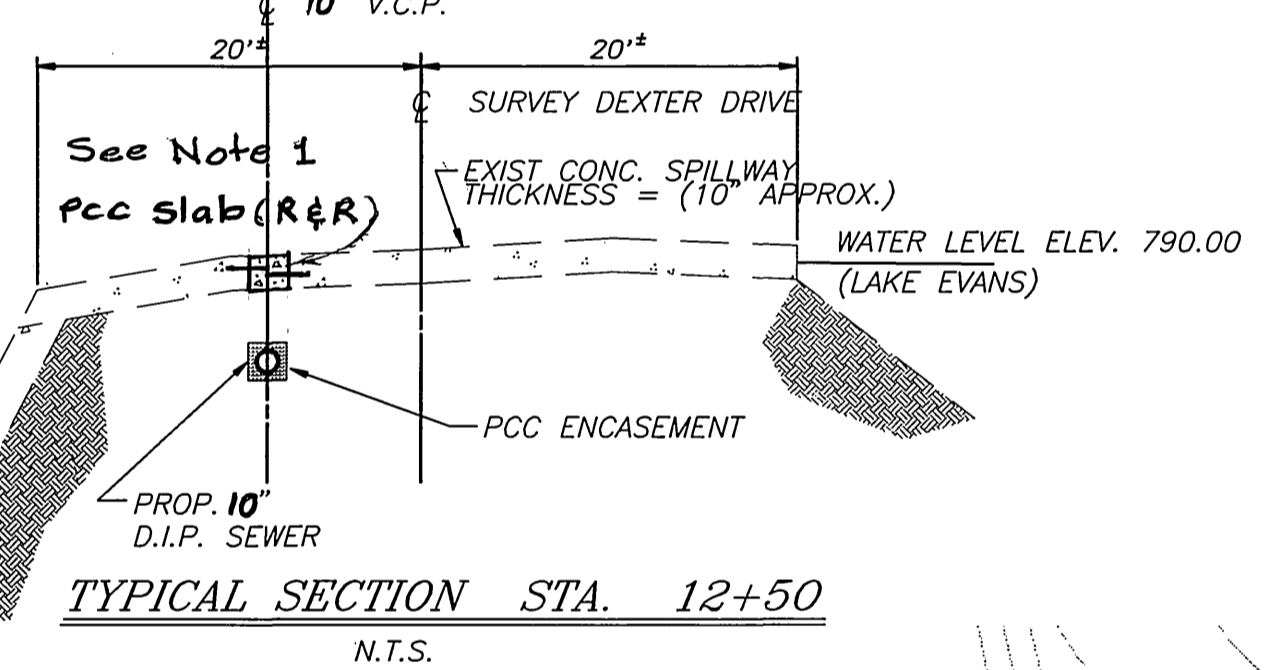
* NOT BUILT *

DWR #81-000
ACCT. NO.: 551-741290-440301-40179
DEXTER DRIVE FORCE MAIN REPLACEMENT (10" GRAVITY SEWER MAIN)
SHEET 1 OF 2
FILE NO.
HORIZ. SCALE: 1" = 40' VERT. SCALE: 1" = 4'

NOTE: 10" DIP (DUCTILE IRON PIPE WITH LINING) SHALL BE CLASS 50 WITH MECHANICAL JOINTS.



NOTE 1: Provide 3/4" solid steel dowel min. 2' long each side of PCC slab spaced @ 30" c-c. Drill one foot into existing concrete slab for embedment.



ENGINEER IN RESPONSIBLE CHARGE
 Duane K. Greenwood
 No. 43965
 R.C.E. No. 43965 expires 6/30/97
 DATE 5/26/95

CITY OF RIVERSIDE, CALIFORNIA PUBLIC WORKS DEPARTMENT			
APPROVED BY	BY	DATE	APPROVED BY
DEPUTY P.W. DIRECTOR	[Signature]	5/26/95	PUBLIC WORKS DIRECTOR
PRINCIPAL ENGINEER	[Signature]		
CHIEF P.W. INSPECTOR	[Signature]		
TRAFFIC DIVISION	[Signature]		
SURVEYOR	[Signature]		
STREET SERVICES	[Signature]		
PARKS DEPARTMENT	[Signature]		

* NOT BUILT *
 DEXTER DRIVE
 FORCE MAIN
 REPLACEMENT
 (10" GRAVITY SEWER MAIN)
 HORIZ. SCALE: 1" = 40' VERT. SCALE: 1" = 4'

DWR #81-000
ACCT. NO.: 551-741290-440301-40179
S-1668
SHEET 2 OF 2
FILE NO.