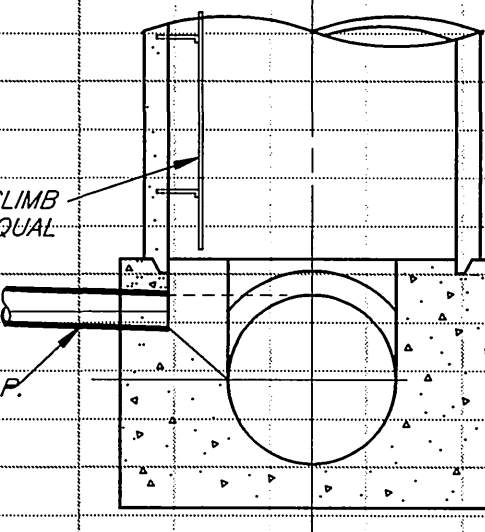


**GENERAL CONSTRUCTION NOTES**

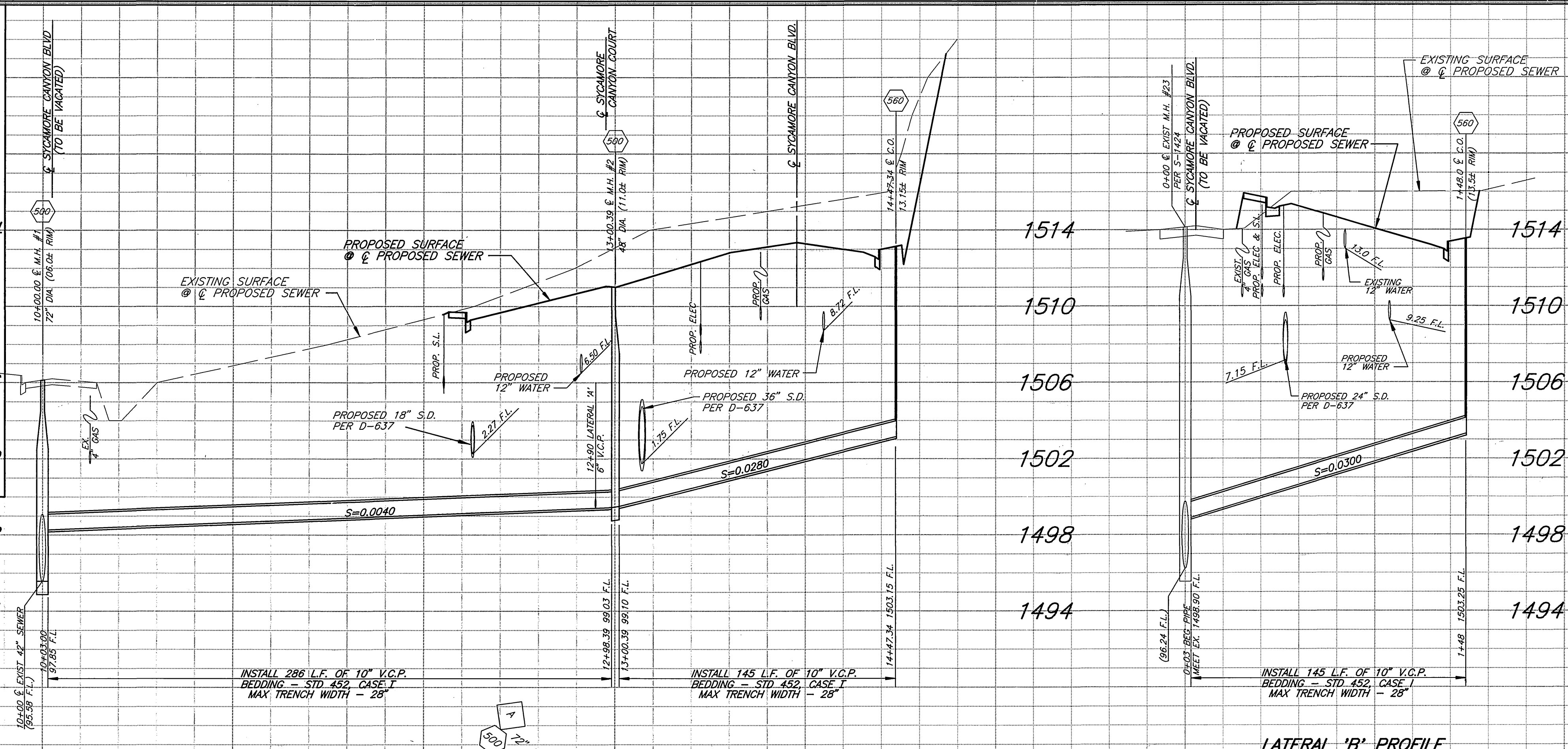
- EXISTING UTILITIES SHOWN ON THIS PLAN ARE PLOTTED FROM UTILITY RECORDS. THE CONTRACTOR IS REQUIRED TO TAKE DUE PRECAUTIONARY MEASURES TO LOCATE AND PROTECT ALL UTILITIES, WHETHER OR NOT SHOWN ON THIS PLAN. IF THE COVER OF A UTILITY IS KNOWN, IT IS SHOWN IN THE PROFILE. UTILITIES SHOWN IN THE PROFILE AS UNKNOWN, BUT THE UTILITY IS NOT EXPECTED TO CONFLICT WITH THE PROPOSED IMPROVEMENTS.
- ALL FLAGGED ELEVATIONS SHALL BE STAKED IN THE FIELD.
- EACH PRIME CONTRACTOR BIDDING THIS WORK SHALL HAVE A CLASS "A" LICENSE.
- ALL EXPOSED INTERIOR SURFACES OF MANHOLE BASE AND FRAME AND COVER TO BE COATED WITH SANCON 100, POLYURETHANE LINER PER MANUFACTURERS RECOMMENDATIONS OR CITY APPROVED EQUAL.
- ALL EXPOSED INTERIOR SURFACES OF MANHOLE SHAFT TO BE LINED WITH 1514 T-LOCK AMER-PLATE (WHITE) AS MANUFACTURED BY AMERON PROTECTIVE COATING DIVISION OR CITY APPROVED EQUAL.

**SPECIFIC CONSTRUCTION NOTES**

- NUMBERS ABOVE 100 IN A HEXAGON ON THE PLAN REFER TO THE RESPECTIVE STANDARD DRAWING AND SHALL BE CONSTRUCTED ACCORDINGLY. UNLESS MODIFICATIONS ARE NOTED ON THE PLAN OR COVER SHEET, ANY NUMBER SHOWN BELOW THE STANDARD DRAWING NUMBER INDICATES THE SPECIFIC ALTERNATE TO BE CONSTRUCTED.
- CONSTRUCT MANHOLE PER STD. 500, DIAMETER AS NOTED ON PLAN. ALL CONCRETE INTERIOR SURFACES OF SHAFT AND CONE TO BE LINED WITH P.V.C. T-LOCK (OR EQUAL). MANHOLE BASE, FRAME & COVER TO BE COATED WITH SANCON 100, POLYURETHANE LINER, OR CITY APPROVED EQUAL, PER MANUFACTURERS RECOMMENDATIONS. MANHOLE CONE & SHAFT SHALL BE PRECAST CONCRETE AS M.F.D. BY INLAND CONCRETE ENTERPRISES OR CITY APPROVED EQUAL.
- CONNECT PROPOSED 10" V.C.P. TO EXISTING MANHOLE AND REMODEL MANHOLE SHELF TO ACCEPT 10" V.C.P. ANY EXPOSED CONCRETE SURFACES TO BE COATED WITH SANCON 100, POLYURETHANE LINER, OR CITY APPROVED EQUAL, PER MANUFACTURERS RECOMMENDATIONS.



**M.H. DETAIL**  
SCALE: 1"=4'

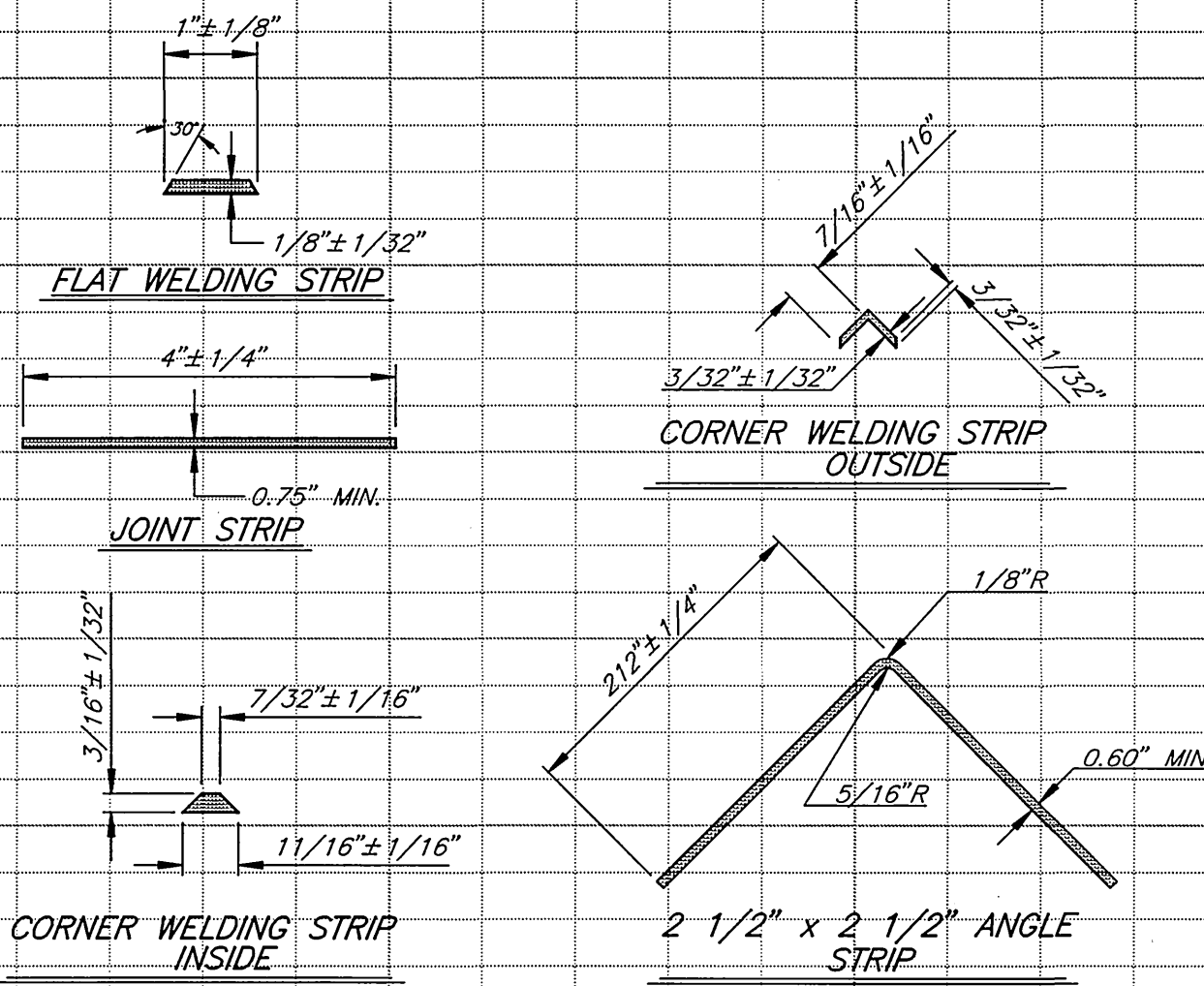
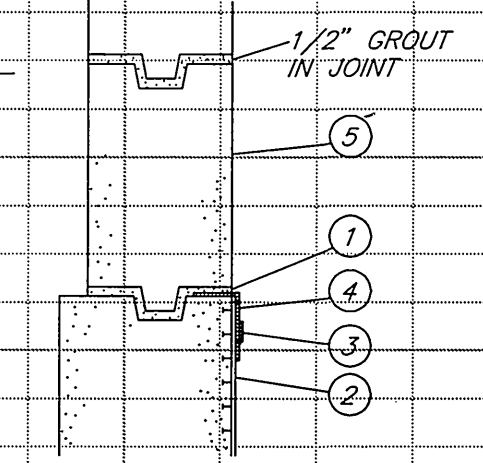


**LATERAL 'B' PROFILE**

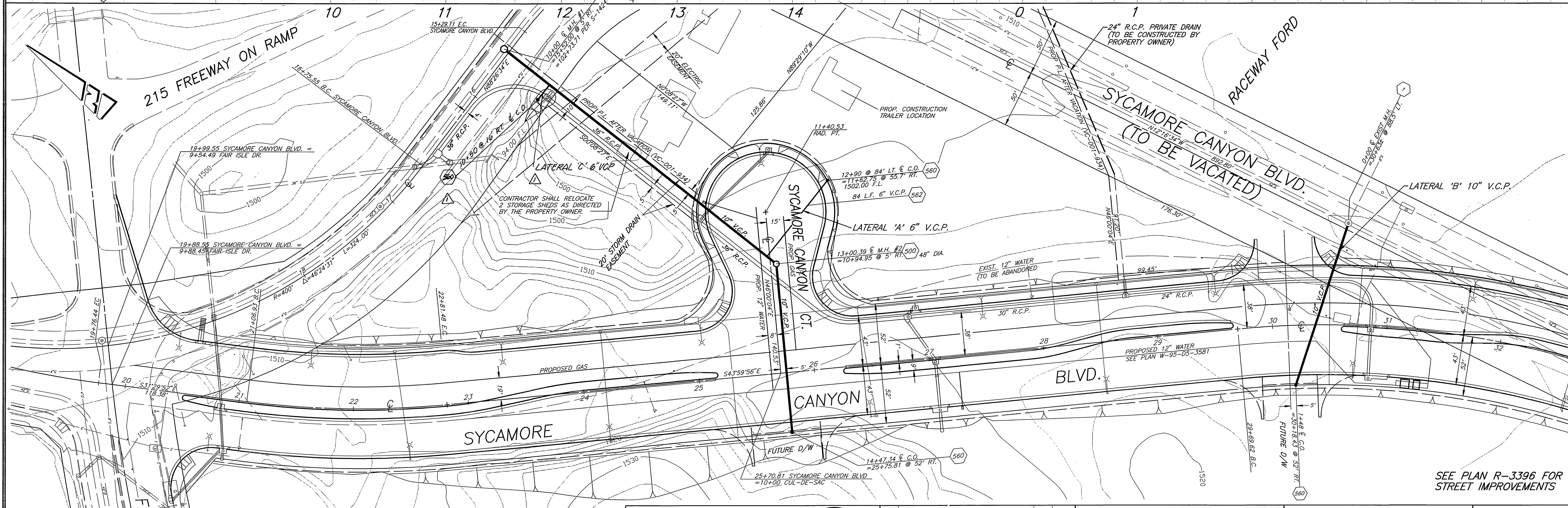
**DETAILS FOR VINYL LINING**

**P.V.C. LINER INSTALLATION NOTES**

- SET MANHOLE SHAFT AND GRADE RINGS IN CEMENT GROUT ON TOP OF PVC LINER.
- T-LOCK PVC LINER, INSTALLED IN PIPE BY PIPE FABRICATOR.
- 1 INCH WELD STRIP.
- 2-1/2" x 2-1/2" ANGLE STRIP.
- CONCRETE SURFACE TO BE COATED WITH SANCON 100, POLYURETHANE LINER.



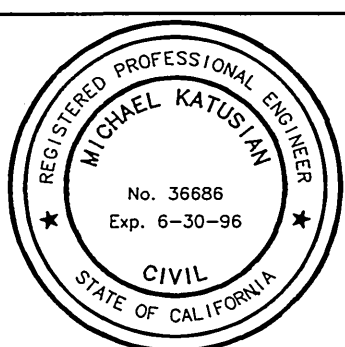
**STANDARD INSTALLATION ACCESSORY STRIPS**



SEE PLAN R-3396 FOR STREET IMPROVEMENTS

**BENCHMARK:**  
P.K. MAIL & TIM, 350' SOUTH OF NORTHWEST PROPERTY CORNER, 1-2' EAST OF WLY E.P. PER ADKIN ENG. FIELD BOOK. (RACEWAY FORD 5900 BOX SPRINGS BLVD)  
ELEV. - 1512.73

**ENGINEER IN RESPONSIBLE CHARGE**  
*Michael Katusian*  
MICHAEL KATUSIAN  
R.C.E. No. 36896 expires 6/30/96  
DATE 1/8/96



DESIGNED BY: CURT DRAWN BY: CURT CHECKED BY: KARL  
ADDED LATERAL 'C' & C.O. 4/9/96

**CITY OF RIVERSIDE, CALIFORNIA**  
**PUBLIC WORKS DEPARTMENT**  
APPROVED BY: [Signature] DATE: [Date]  
DEPUTY P.W. DIRECTOR  
PRINCIPAL ENGINEER  
CHIEF P.W. INSPECTOR  
STREET SERVICES  
SURVEYOR

**SYCAMORE CANYON BLVD. REALIGNMENT**  
FAIR ISLE DR. TO 1700' S'LY  
HORIZ. SCALE: 1" = 40' VERT. SCALE: 1" = 4'

ACCT. NO. 453-570490-455010  
**S-1677**  
SHEET 1 OF 1

INDEXED 2/5/96 GLL