

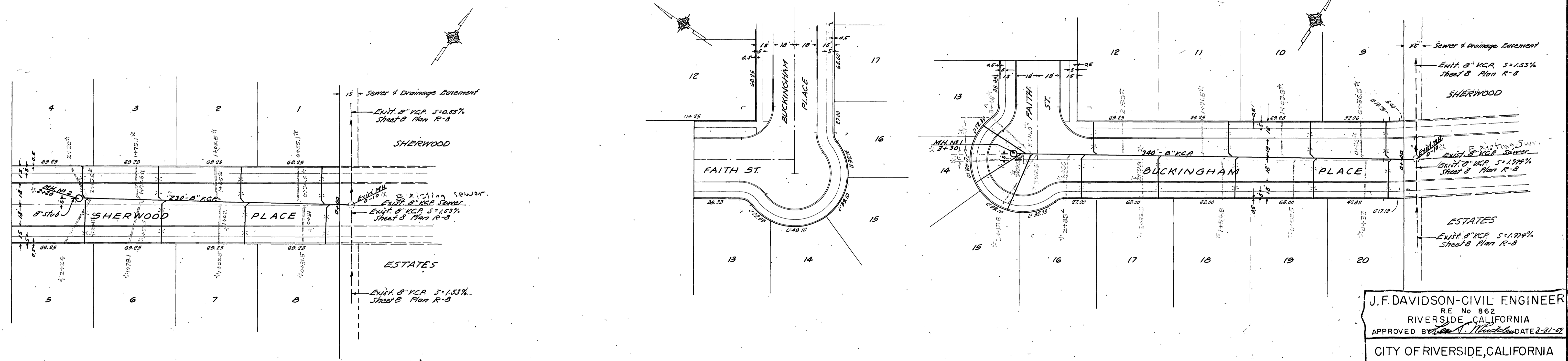
B.M.
 City of Riverside Bench Mark - Chiseled mark on NE1/4
 curb radii of center line of Magnolia Avenue at
 Crowell Avenue. Elev. = 796.73

Set T.B.M. - Chiseled Mark on top of curb at center of
 existing catch basin on Ely side Sherwood Place
 near Tract Boundary. Elev. = 799.96

NOTES:
 Lay laterals for Lots 13-16-15
 on minimum grade.

All Pipes and Laterals to be
 located in the field.

Manholes are Riv. Std. N^o 500



J.F. DAVIDSON-CIVIL ENGINEER
 RE No 862
 RIVERSIDE, CALIFORNIA
 APPROVED BY *[Signature]* DATE 2-21-58

CITY OF RIVERSIDE, CALIFORNIA
 DEPARTMENT OF PUBLIC WORKS

SEWER PLAN & PROFILE
 SHERWOOD PL., FAITH ST., BUCKINGHAM PL.

RAMONA GARDENS
 HORIZ. SCALE 1"=40' VERT. SCALE 1"=4'

APPROVED BY *[Signature]*
 Director of Public Works
 DATE April 7, 1909

NO. S-1683
 SHEET 1 OF 1