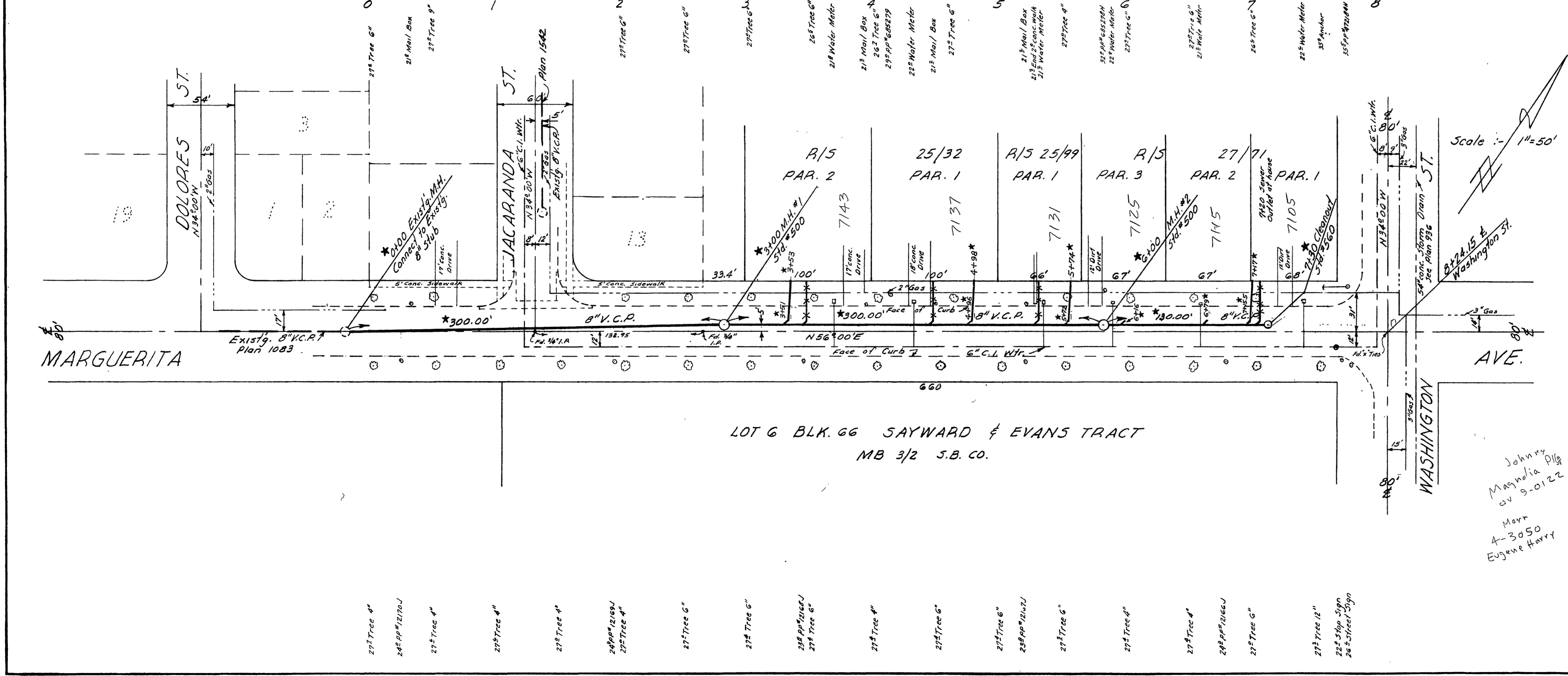


PROFILE	
REVISIONS	DATE
NOTED	4/23/59
BY	



QUANTITY ESTIMATE

8" Vitriified Clay Pipe	130 lin. ft.
4" Vitriified Clay Pipe	140 lin. ft.
8" x 4" Wyes	6
Manhole Std. #500	2
Cleanout Std. #560	1

GENERAL NOTES:
 Construction shall be in accordance with Specifications of the City of Riverside, Department of Public Works.
 House Connections shall be field located.

BENCH MARK
 PK nail 1' East of Curb Return at N.E. cor. Marguerita & Dolores. Elev. 886.46. City F.B. 633/58. 1911A 4/2.

PLAN	
REVISIONS	DATE
NOTED	4/23/59
BY	

LOT 6 BLK. 66 SAYWARD & EVANS TRACT
 MB 3/2 S.B. CO.

Johnny Magnoia Dlg
 on 5-01-22
 Mark
 4-3050
 Eugene Harry

REVISIONS		CITY OF RIVERSIDE CALIFORNIA DEPARTMENT OF PUBLIC WORKS	
MARK	DATE	DESCRIPTION	
★	12-3-59	"As Built" H. Ball	MARGUERITA AVENUE SANITARY SEWER DISTRICT
DESIGNED BY	AEC	CHECKED BY	APPROVED BY
DRAWN BY	AEC	Emmet N. Wells A.E. 3876	[Signature] DIRECTOR OF PUBLIC WORKS
RECOMMENDED BY	Emmet N. Wells ASSISTANT CITY ENGINEER	DATE	5-169 June 19, 1959