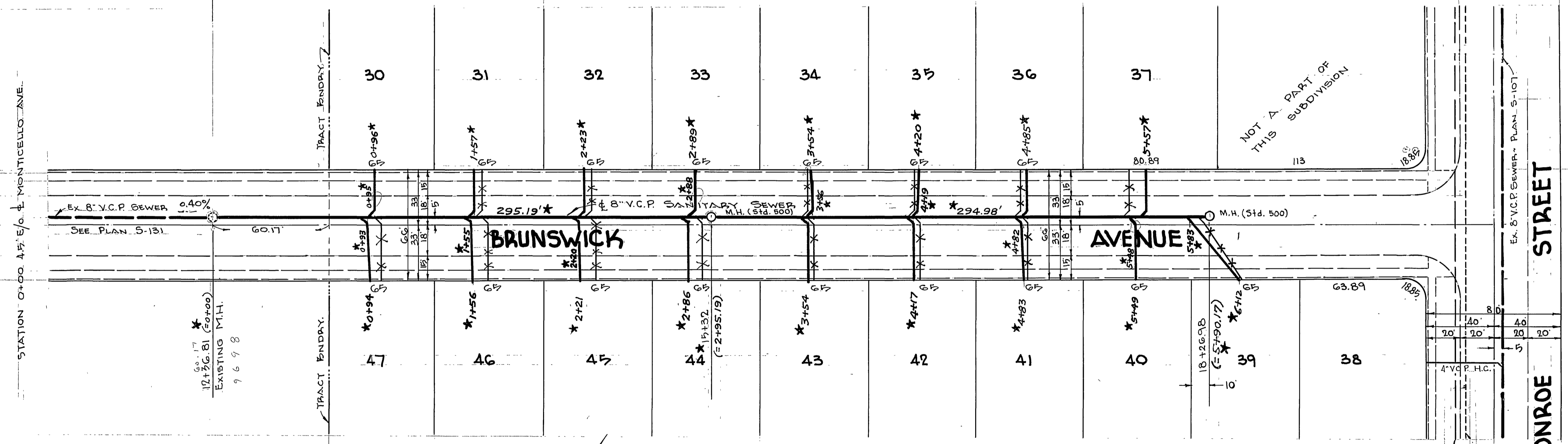


S.M. P.I. IN WEST CURB N.W. COR. COLORADO AND MONROE 2' NLY. OF CURB RETURN. ELEVATION 750.39



STATION 0+00 45' 6" E. MONTICELLO - J.M.E.

PLAN SCALE: 1"=40'

- NOTES
1. ALL CONSTRUCTION TO BE IN ACCORDANCE WITH CITY OF RIVERSIDE STANDARDS.
 2. ALL MANHOLES - STD. # 500.
 3. HOUSE CONNECTIONS TO BE 4" V.C.P. - EXACT LOCATIONS TO BE DETERMINED IN THE FIELD.

CHANGE NOTE

1. Eliminated 4" H.C. to NOT A PART

McDANIEL ENGINEERING CO.
ANAHEIM CALIFORNIA

APPROVED *[Signature]* P.E. 9208 DATE 3-20-59

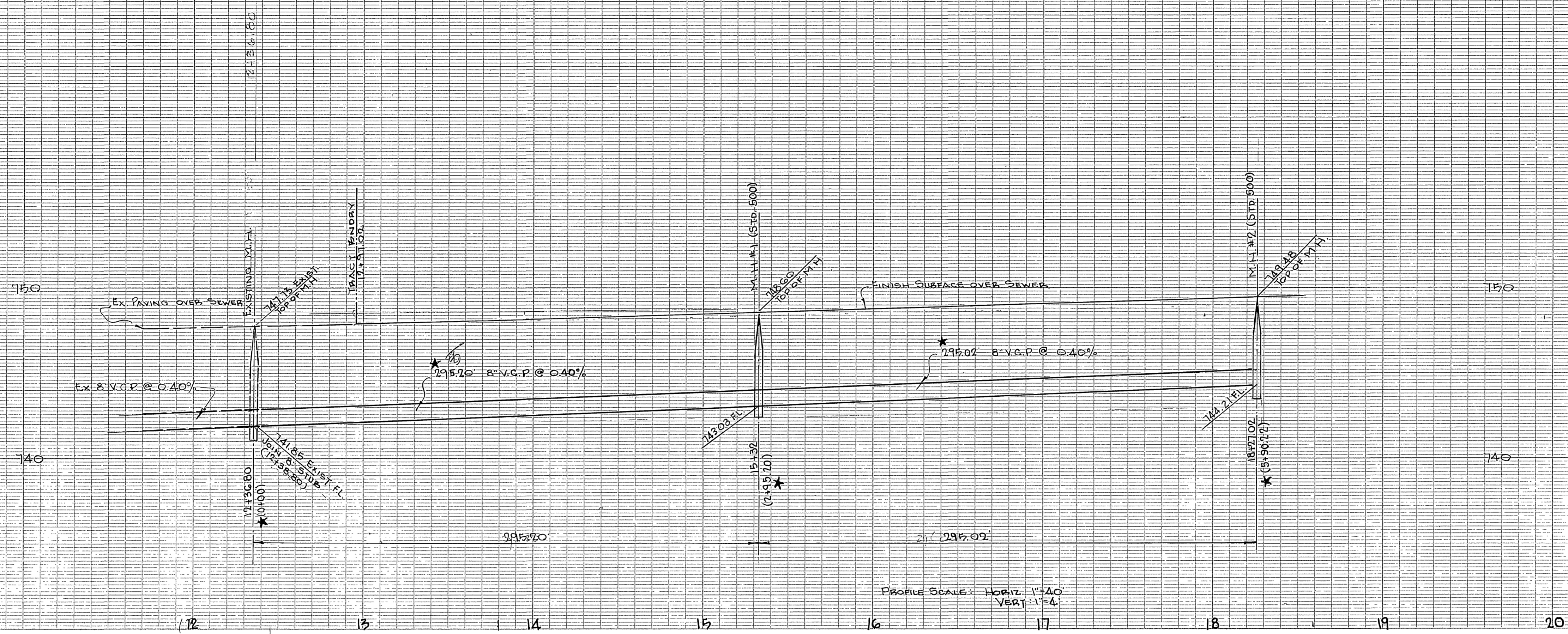
CITY OF RIVERSIDE CALIFORNIA
DEPARTMENT OF PUBLIC WORKS

SEWER PLAN AND PROFILE
MONROE CHATEAU
BRUNSWICK AVENUE
FROM MONROE ST. TO 260' S.W.Y.

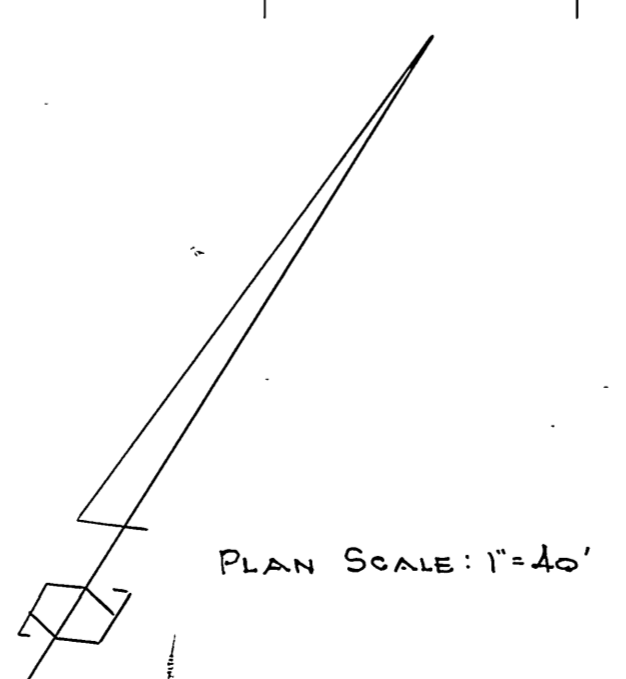
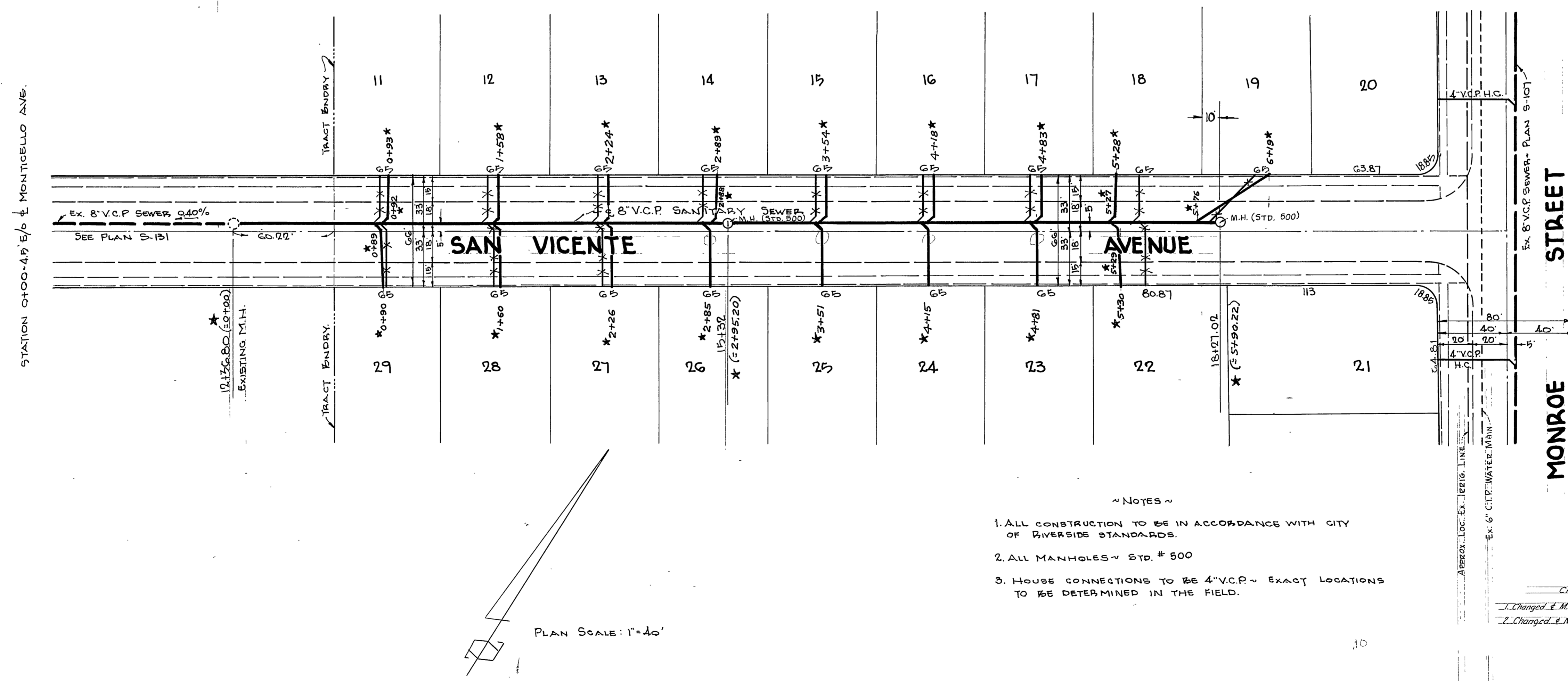
HORIZ. 1"=40' SCALE VERT. 1"=4'

APPROVED BY: *[Signature]* NO. S-170
DIRECTOR OF PUBLIC WORKS
DATE: 4-21-59 SHEET 1 OF 3 SHEETS

* "As Built" 7-16-59 H.B.H.



E.M. P.M. IN WEST CORNER NW COR.
 COLORADO AND MONROE ST. N.E.
 OF CURB RETURN
 ELEVATION = 150.39



- NOTES
1. ALL CONSTRUCTION TO BE IN ACCORDANCE WITH CITY OF RIVERSIDE STANDARDS.
 2. ALL MANHOLES ~ STD. # 500
 3. HOUSE CONNECTIONS TO BE 4" V.C.P. ~ EXACT LOCATIONS TO BE DETERMINED IN THE FIELD.

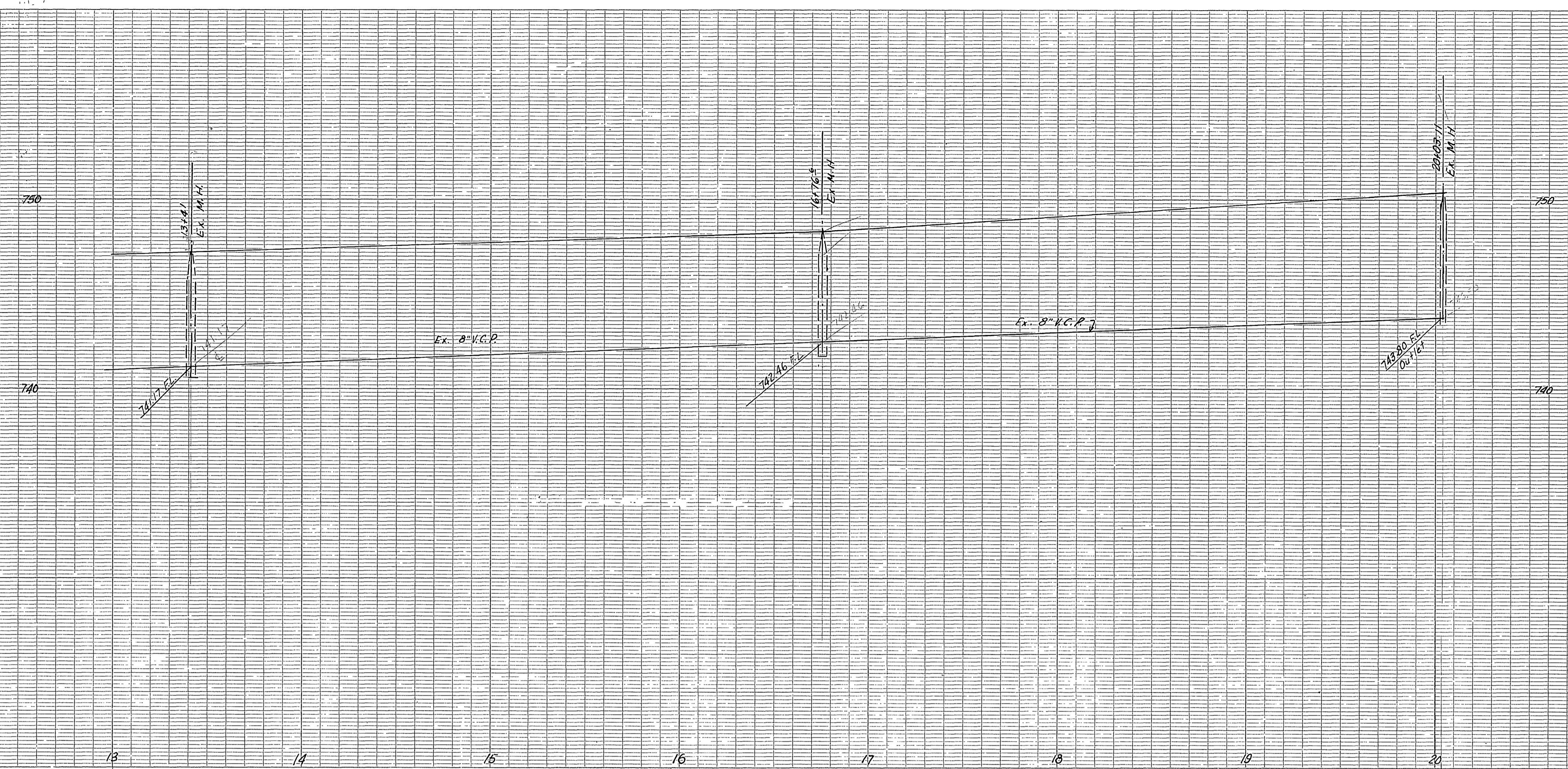
CHANGE NOTE
 1. Changed 4" M.H. Elev. M.H. No. 1
 2. Changed 4" M.H. Elev. M.H. No. 2

M. DANIEL ENGINEERING CO.
 ANAHEIM CALIFORNIA
 APPROVED: *A.D. Sawick* RCE 9808 DATE 3-20-59
CITY OF RIVERSIDE CALIFORNIA
 DEPARTMENT OF PUBLIC WORKS
 SEWER PLAN AND PROFILE
 MONROE CHATEAU
SAN VICENTE AVENUE
 FROM MONROE STREET TO 700' S.W.L.Y.
 HORIZ. 1"=40' SCALE VERT. 1"=4'
 APPROVED BY: *Smart* NO. **S-170**
 DATE: 4-21-59 SHEET 2 OF 3 SHEETS

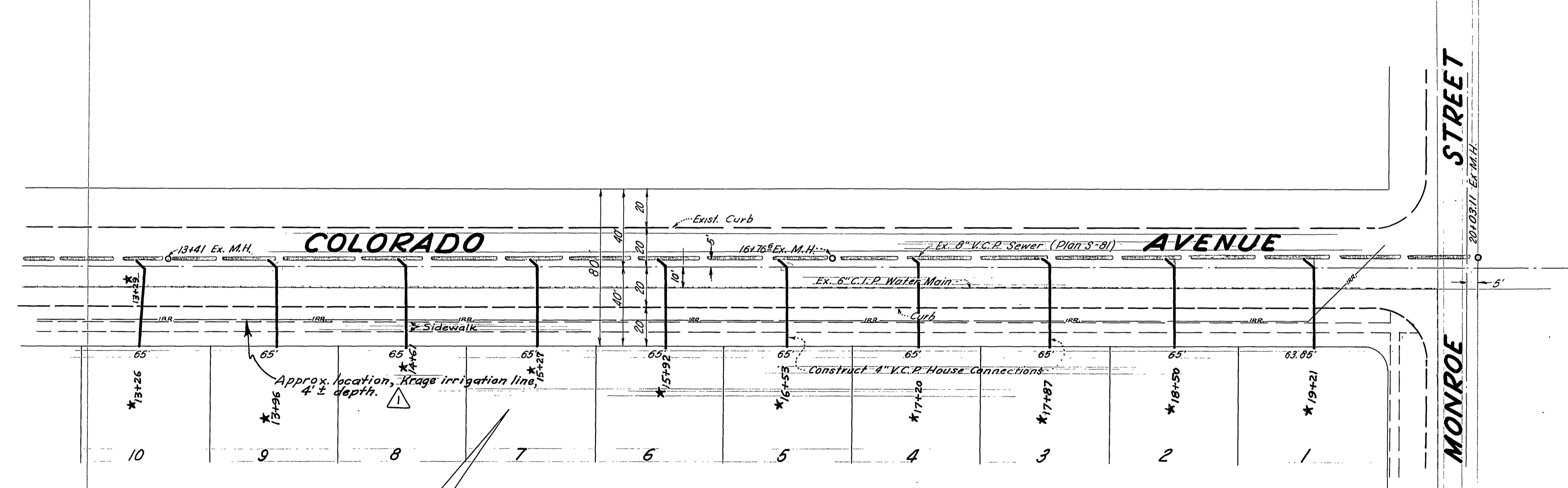
PROPERTY OF
 CITY OF RIVERSIDE
 DEPT. OF PUBLIC WORKS

* = "As Built," 7-16-59, H.B. Ball

295.20
 60.2.2
 2.295



B.M. P.K. in West Curb NW Cor. Colorado & Monroe 2'-11 1/2" W. of curb Return Elev. 750.39



- NOTES
1. All construction to be in accordance with City of Riverside Standards
 2. All Manholes - Std. #500
 3. House Connections to be 4" V.C.P. - Exact locations to be determined in the field.

McDANIEL ENGINEERING CO.
 ANAHEIM CALIFORNIA
 APPROVED: *[Signature]* 4.13.59
 R.C.E. 3808 DATE

CITY OF RIVERSIDE CALIFORNIA
 DEPARTMENT OF PUBLIC WORKS

SEWER PLAN AND PROFILE
MONROE CHATEAU
COLORADO AVENUE
 FROM 100 FT. W. LY. OF TO MONROE ST.

Mark	Date	Description
△	4-22-59	Krage irrigation line & sidewalk. H. Ball
★	7-16-59	"As Built" Laterals H. Ball

HORIZ 1"=40' SCALE VERT 1"=4'
 APPROVED BY: *[Signature]*
 DIRECTOR OF PUBLIC WORKS
 DATE: 4-21-59
 NO. S-1700
 SHEET 3 OF 3 SHEETS

PROPERTY OF
 CITY OF RIVERSIDE