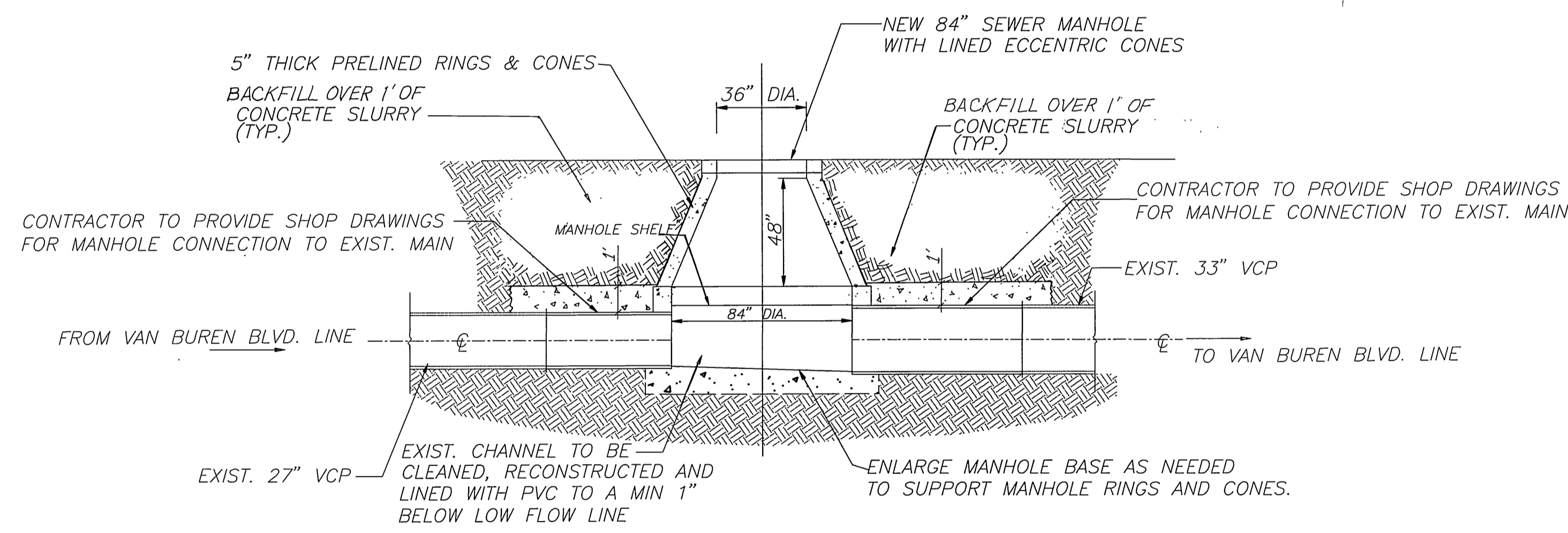
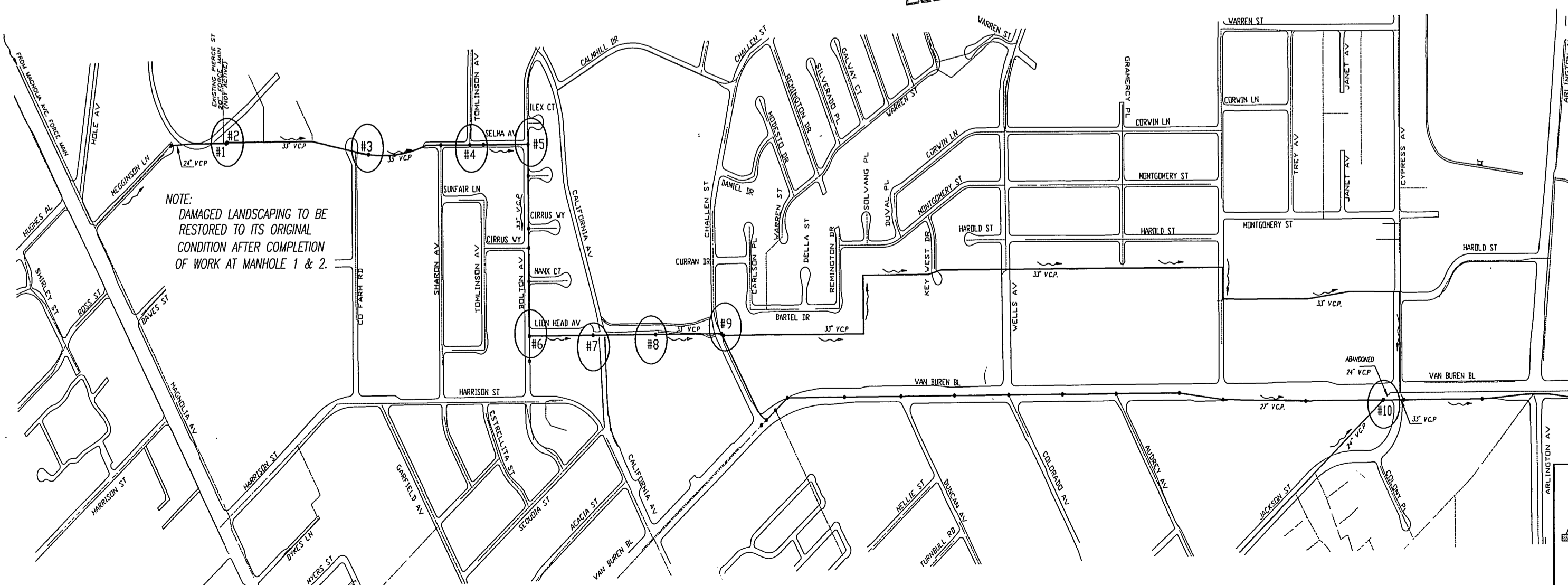


**PROPOSED MANHOLE # 10 AT VAN BUREN BLVD  
AND JACKSON ST. - PLAN VIEW**  
SCALE: 1" = 4'



**SECTION A-A**  
SCALE: 1" = 4'



**MANHOLE REHABILITATION SCHEDULE**

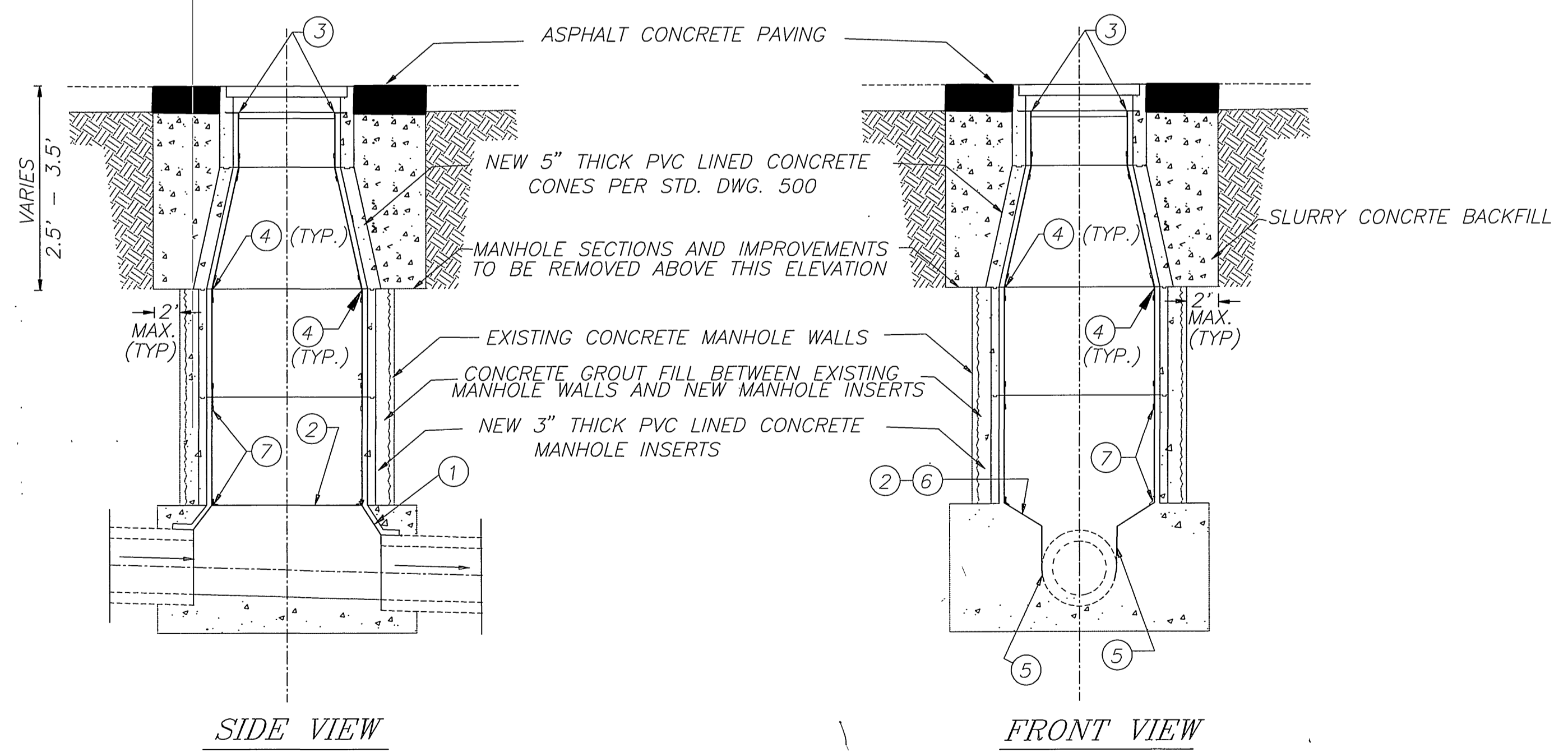
EXISTING MH No.	EXIST. MH		PROP. MH INSERT	
	DEPTH	I.D.	DEPTH	I.D.
1	12.5'	60"	12.5'	54"
2	12.5'	60"	12.5'	54"
3	10'	60"	10'	54"
4	13'	60"	13'	54"
5	20'	60"	20'	54"
6	20'	60"	20'	54"
7	18'	60"	18'	54"
8	13.5'	60"	13.5'	54"
9	15'	72"	15'	66"
10	7' x 16.5'	7'	84"	84"

**MANHOLE LINING NOTES:**

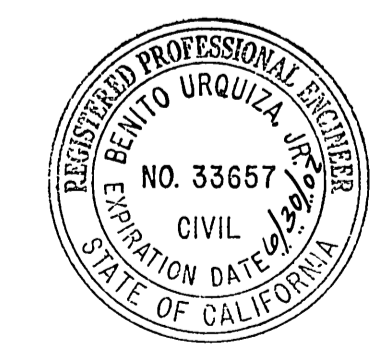
- THESE NOTES APPLY TO PVC LINED MANHOLE INSERTS, SHELVES AND CHANNELS
- PVC TURNBACK ANGLE SHALL BE GLUED AND HELD TIED TO THE EXPOSED VCP BY 1/2 INCH STEEL BAND WITH CONTACT CEMENT ADHESIVE TO BOTH SURFACES.
  - INSTALL FLAT SHEET PVC NON-SKID SURFACE, ON SHELVES WITH CONTACT CEMENT ADHESIVE APPLIED TO CONCRETE AND PVC SURFACES. OVERLAP PVC ON TO MANHOLE SHAFT AND CHANNEL LINER; WELD TO BOTH AND COMPLETE WITH 1" WELD STRIPS.
  - INSTALL PREFORMED CORNER TURNBACK UNDER RING.
  - WELD 4" JOINT STRIPS AND FINISH BOTH EDGES WITH 1" WELD STRIPS.
  - CONCRETE CHANNEL SHALL BE CLEANED, RECONSTRUCTED AND LINED TO A MIN. 1" BELOW LOW FLOW LINE WITH PVC (T-LOCK) LINING
  - MANHOLE SHELVES TO BE SLOPED 1" PER FOOT TO CHANNEL.
  - INSTALL 1" WELD STRIPS WHERE PVC (T-LOCK), OR CITY APPROVED EQUAL, IS WELDED; I.E., TOP OF CHANNEL, SHAFT TO SHELF, TURNBACK TO PIPE FACE, CORNERS, ETC.

**SPECIFIC CONSTRUCTION NOTES:**

- THESE NOTES APPLY FOR ALL MANHOLE LINING.
- CONTRACTOR TO PROVIDE SHOP DRAWINGS & SPECIFICATIONS FOR ALL MANHOLE LINER INSERTS. ALL MANHOLES CONSTRUCTION SHALL BE IN ACCORDANCE WITH THIS PLAN AND ACCOMPANYING SPECIAL PROVISIONS AND CITY STD. DWG 500 AND 503.
  - ALL MANHOLES INSIDE DIAMETER (I.D) SHALL BE IN ACCORDANCE WITH MANHOLE REHABILITATION SCHEDULE ON THIS SHEET. MANHOLE LINER INSERTS FOR MANHOLES 1 TO 9 SHALL BE 3" THICK PRELINED, PRECAST CONCRETE RINGS. CONES FOR ALL MANHOLES, INCLUDING MANHOLE NO. 10, SHALL BE A MIN. 5" THICK PRELINED PRECAST CONCRETE.
  - CONTRACTOR TO PROVIDE SHOP DRAWINGS AND SPECIFICATIONS FOR CHANNEL AND SHELF LINING INSTALLATION.
  - MANHOLE DEPTH IS BETWEEN FLOWLINE AND SURFACE ELEVATION.
  - MANHOLE # 5 SHALL BE A DROP MANHOLE PER STD. DWG. 503.
  - ALL MANHOLES SHALL HAVE STEPS PER STD. DWG. 500.
  - LATERAL INLETS, IN PVC LINED MANHOLES, SHALL BE FULLY LINED WITH PVC, NO CONCRETE SHALL REMAIN EXPOSED
  - AT MANHOLE NO. 10, CONTRACTOR SHALL PROVIDE SHOP DRAWINGS SHOWING CONNECTIONS OF PIPES AT EXISTING MANHOLES TO NEW MANHOLE WALLS. EXISTING CHANNEL USED FOR PIPE EXTENSION SHALL BE CHIPPED, CLEANED, RECONSTRUCTED AND LINED WITH PVC TO ONE INCH BELOW THE LOW FLOW LINE.



**TYPICAL MANHOLE PVC LINER DETAIL**



<b>ENGINEER IN RESPONSIBLE CHARGE</b> BEN URQUIZA R.C.E. No. 33657 expires 6/30/02 DATE <u>JULY 31, 1998</u>	CITY OF RIVERSIDE, CALIFORNIA PUBLIC WORKS DEPARTMENT		<b>MEGGINSON TRUNK SEWER MANHOLE REHABILITATION</b>	ACCT. NO.: 551-741290-440301-40187
	DESIGNED BY: ABE DRAWN BY: LFH CHECKED BY:	APPROVED BY: <u>R.M. Bratt</u> PUBLIC WORKS DIRECTOR DATE: <u>8-12-98</u>		SHEET <u>1</u> OF <u>1</u> FILE NO. S1675-1H

INDEXED 1-26-99 LFH