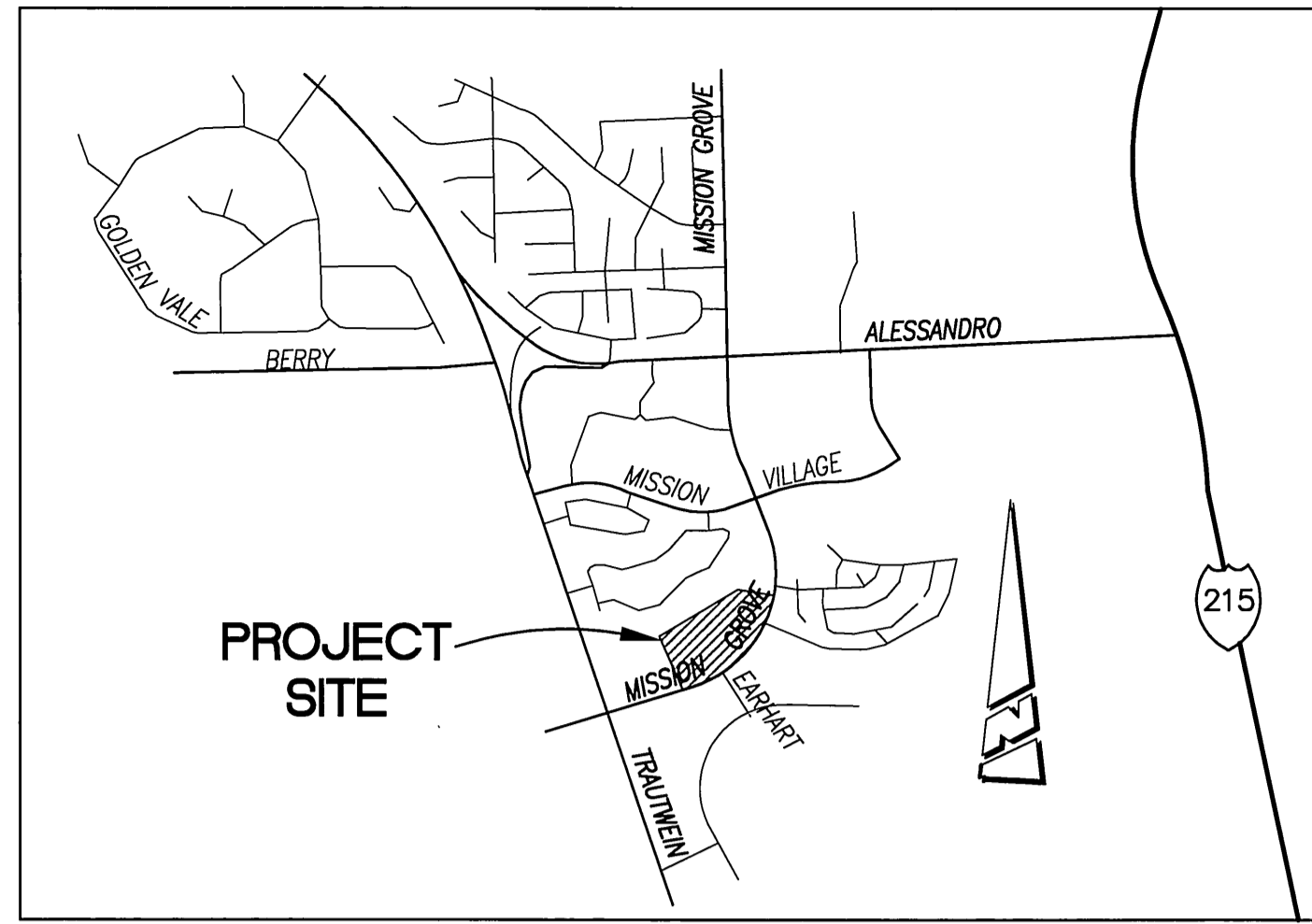


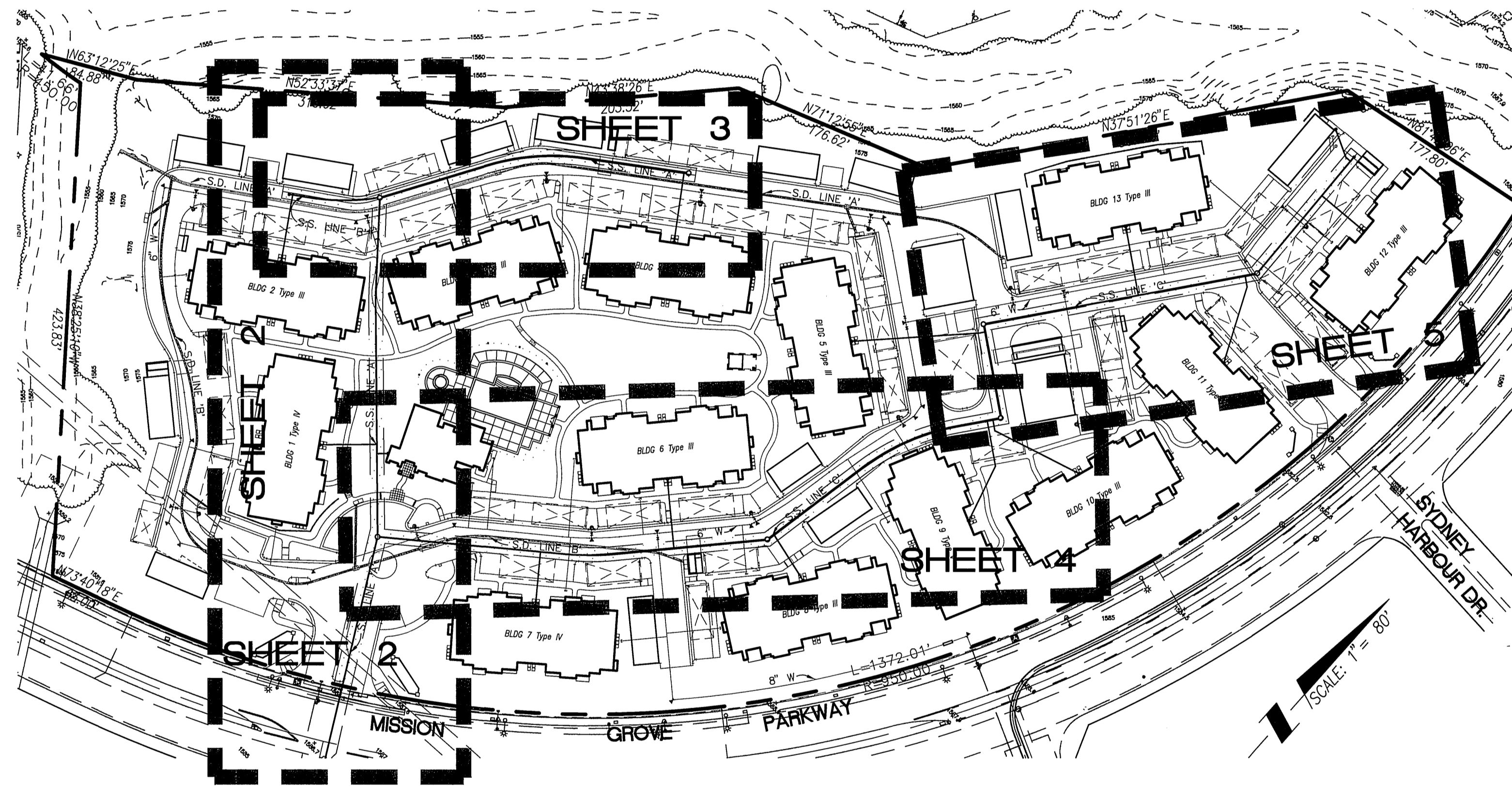
# SEWER PLANS IN THE CITY OF RIVERSIDE

## CONSTRUCTION NOTES AND QUANTITIES CONT.



VICINITY MAP  
N.T.S.

SEWER CONSTRUCTION NOTES		
CONST. NO.	DESCRIPTION	QUANTITY UNIT
50	CONSTRUCT SEWER MANHOLE PER CITY OF RIVERSIDE STD. DWG. NO. 500	7 EA
51	INSTALL 8" VCP SEWER MAIN WITH BEDDING PER CITY OF RIVERSIDE STD. DWG. NO. 452 CASE 2	1,829 LF
52	CONSTRUCT 6" SEWER LATERAL AND CLEANOUT WITH BEDDING PER CITY OF RIVERSIDE STD. DWG. NO. 562A AND 452 CASE 1. INVERT ELEVATIONS SHOWN ON PLAN. (PRIVATE)	917 LF
53	CONSTRUCT SEWER CLEANOUT PER CITY OF RIVERSIDE STD. DWG. NO. 560	2 EA
54	JOIN EXISTING MANHOLE	1 EA



SEWER INDEX MAP

### GENERAL NOTES

- NO PERSON SHALL PERFORM ANY CONSTRUCTION ACTIVITY OR INSTALL ANY OBJECTS WITHIN THE PUBLIC RIGHTS-OF-WAY OR EASEMENTS OF THE CITY OF RIVERSIDE WITHOUT A VALID CONSTRUCTION PERMIT OR, A STREET OPENING PERMIT OR AN ENCROACHMENT PERMIT ISSUED BY THE CITY'S PUBLIC WORKS DEPARTMENT.
- IT SHALL BE THE RESPONSIBILITY OF THE CONTRACTOR TO CLEAR THE RIGHT-OF-WAY IN ACCORDANCE WITH THE PROVISIONS OF LAW AS IT AFFECTS EACH UTILITY INCLUDING IRRIGATION LINES AND APPURTENANCES AND AT NO COST TO THE CITY.
- CONSTRUCTION SHALL BE IN ACCORDANCE WITH THE CITY OF RIVERSIDE DEPARTMENT OF PUBLIC WORKS, STANDARD DRAWINGS, ITS SUPPLEMENTAL NOTES AND THE STANDARD SPECIFICATIONS FOR PUBLIC WORKS CONSTRUCTION, CURRENT EDITION.
- THE PRIVATE ENGINEER SIGNING THESE PLANS IS RESPONSIBLE FOR ASSURING THE ACCURACY AND ACCEPTABILITY OF THE WORK HEREON. IN THE EVENT OF DISCREPANCIES ARISING DURING CONSTRUCTION, THE PRIVATE ENGINEER SHALL BE RESPONSIBLE FOR DETERMINING AN ACCEPTABLE SOLUTION AND REVISING THE PLANS FOR APPROVAL BY THE CITY.
- QUANTITIES SHOWN ARE FOR INFORMATION ONLY AND THE CITY OF RIVERSIDE IS NOT RESPONSIBLE FOR THEIR ACCURACY.
- THE DEVELOPER SHALL BE RESPONSIBLE FOR PRESERVING OR RE-ESTABLISHING AND REFERENCING SURVEY MONUMENTS DESTROYED, DISTURBED OR BURIED AS A RESULT OF CONSTRUCTION SHOWN HEREON.
- ALL FLAGGED ELEVATIONS SHALL BE STAKED IN THE FIELD BY THE PRIVATE ENGINEER.
- THE CONTRACTOR SHALL CALL IN A LOCATION REQUEST TO UNDERGROUND SERVICE ALERT (USA), PHONE #1-800-227-2600, TWO WORKING DAYS BEFORE DIGGING. NO CONSTRUCTION PERMIT WILL BE ISSUED BY THE PUBLIC WORKS DEPARTMENT INVOLVING EXCAVATION FOR UNDERGROUND FACILITIES UNLESS THE APPLICANT HAS BEEN PROVIDED AN INQUIRY IDENTIFICATION NUMBER BY U.S.A.
- CONTRACTOR IS TO VERIFY EXISTING SEWER ELEVATION PRIOR TO CONSTRUCTION.
- LOCATION OF LATERALS TO BE DETERMINED IN THE FIELD AT THE DIRECTION OF THE OWNER TO AVOID CONFLICT WITH PROPOSED AND/OR EXISTING FACILITIES.
- NO FINISHED FLOOR ELEVATION SHALL BE LESS THAN 6" ABOVE THE UPPER MANHOLE RIM ELEVATION OF THE SEWER LINE SEGMENT BEING CONNECTED TO, WITHOUT HAVING A PROPER BACKWATER VALVE INSTALLED IN THE LATERAL.
- A PLUG SHALL BE INSTALLED AND WILL REMAIN IN PLACE WHERE THE NEW SEWER CONNECTS WITH THE EXISTING SEWER UNTIL THE NEW SEWER IS ACCEPTED BY THE CITY.
- THE SEWER CONTRACTOR SHALL ADJUST MANHOLES TO FINAL GRADE AFTER PAVING IS COMPLETED.
- PIPE BEDDING SHALL BE CASE I PER CITY STD. DWG. NO. 452 UNLESS OTHERWISE SHOWN ON THE PLANS. IF GROUND WATER IS ENCOUNTERED, BEDDING SHALL BE CASE III IN ACCORDANCE WITH NOTE 2, CITY STD. DWG. NO. 452
- ANY TRAFFIC CONTROL STRIPING OBLITERATED AND/OR BADLY WORN DURING CONSTRUCTION SHALL BE RESTORED BY THE CONTRACTOR WITHIN FIVE DAYS AFTER NOTIFICATION FROM THE CITY INSPECTORS.

LEGEND	
--- 1500 ---	EXISTING CONTOUR
--- 1500 ---	PROPOSED CONTOUR
---	STREET CENTER LINE
---	CURB LINE
---	STREET R.W. LINE
---	TRACT BOUNDARY
---	FLOW LINE
---	CUT FILL SLOPE
---	SLOPE (2:1 MAX.)
---	MATCHLINE
PAD=1654	PAD ELEVATION
8	LOT NUMBER
---	SANDBAGS
---	SETBACK LINE

### SHEET INDEX

NO.	DESCRIPTION
1	TITLE SHEET
2	SEWER IMPROV. LINE 'A'
3	SEWER IMPROV. LINE 'A' AND 'B'
4-5	SEWER IMPROV. LINE 'C'

APPROVED BY:   
 WESTERN MUNICIPAL WATER DISTRICT  
 450 ALESSANDRO BOULEVARD  
 RIVERSIDE, CALIFORNIA 92508  
 (909) 780-4170 FAX (909) 780-3837  
 FOR NON-INTERFERENCE COMPLIANCE (SHEETS 1 & 2)  
 CIVIL ENGINEER REG. NO. 46212 DATE May 19, 2000

\* AS-BUILT PER PLAN 5-28-03 4th  
 MAY 4, 2000

CITY OF RIVERSIDE  
 PUBLIC WORKS DEPARTMENT

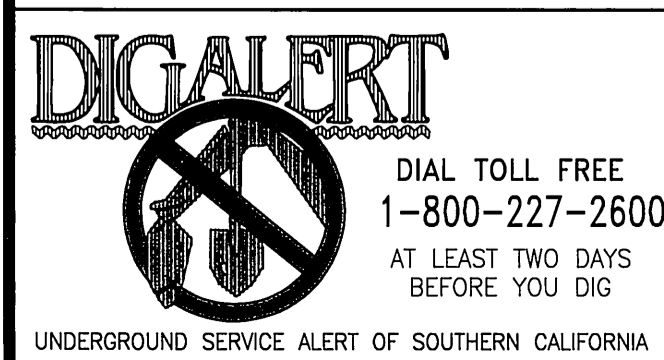
APPROVED BY:   
 DATE: 6/9/00  
 PRINCIPAL ENGINEER  
 PARK DEPARTMENT  
 TRAFFIC DIVISION  
 P.W. ENG. MANAGER: 6/5/00

PUBLIC WORKS DIRECTOR  
R. Mc Grath  
 DATE: 6-9-2000

TITLE SHEET  
 SEWER PLANS FOR  
 PD-002-978  
 7861-7871 MISSION GROVE PARKWAY

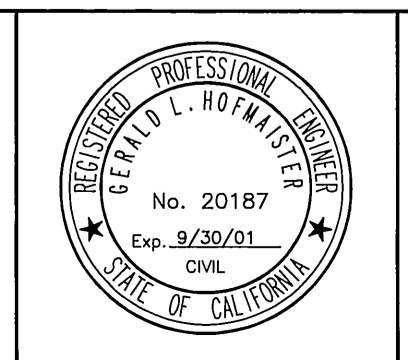
PROJECT NO. 13096  
 S-1705  
 SHEET 1 OF 5

HORIZ. SCALE: AS SHOWN VERT. SCALE: AS SHOWN



PRIVATE ENGINEERING NOTE  
 CONSTRUCTION CONTRACTOR AGREES THAT IN ACCORDANCE WITH GENERALLY ACCEPTED CONSTRUCTION PRACTICES, CONSTRUCTION CONTRACTOR WILL BE REQUIRED TO ASSUME SOLE AND COMPLETE RESPONSIBILITY FOR JOB SITE CONDITIONS DURING THE COURSE OF CONSTRUCTION OF THE PROJECT, INCLUDING SAFETY OF ALL PERSONS AND PROPERTY, THAT THIS REQUIREMENT SHALL BE MADE TO APPLY CONTINUOUSLY AND NOT BE LIMITED TO NORMAL WORKING HOURS, AND CONSTRUCTION CONTRACTOR FURTHER AGREES TO DEFEND, INDEMNIFY AND HOLD DESIGN PROFESSIONAL HARMLESS FROM ANY AND ALL LIABILITY, REAL OR ALLEGED, IN CONNECTION WITH THE PERFORMANCE OF WORK ON THIS PROJECT, EXCEPTING LIABILITY ARISING FROM THE SOLE NEGLIGENCE OF DESIGN PROFESSIONAL.

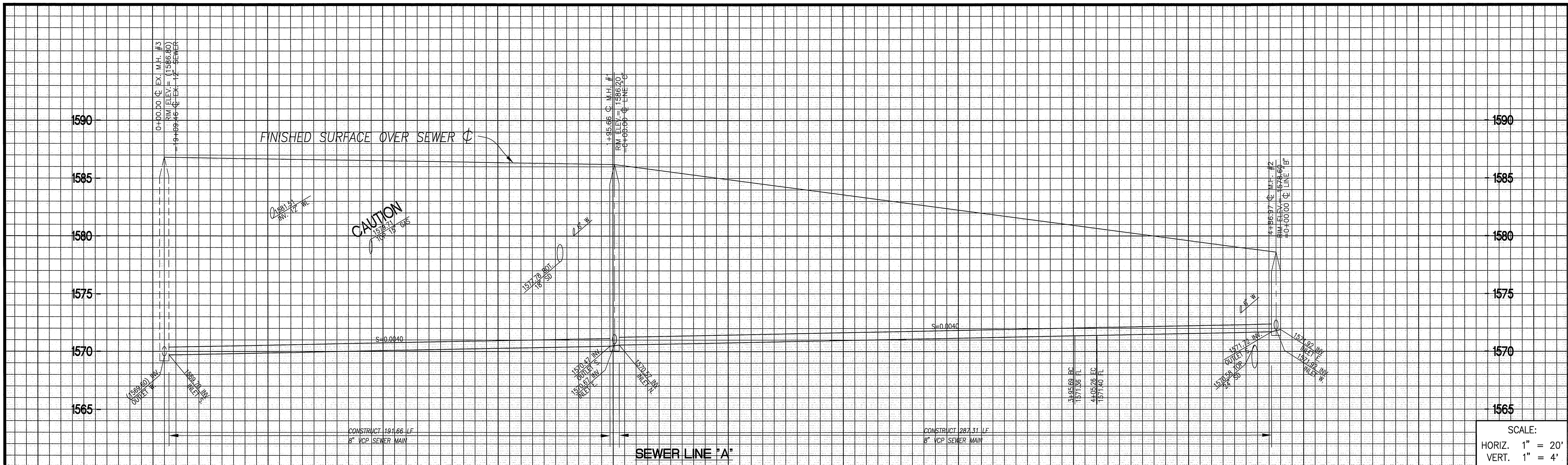
BENCHMARK: E8-A2  
 P.K. NAIL AND TAG IN TOP OF 35 X 50 X 20 FOOT GRANITE BOULDER, 100 FEET WESTERLY OF TRAUTWEIN ROAD AND 500 FEET NORTHERLY OF JESSE LANE.  
 MARCH 1988  
 ELEV. 1588.453



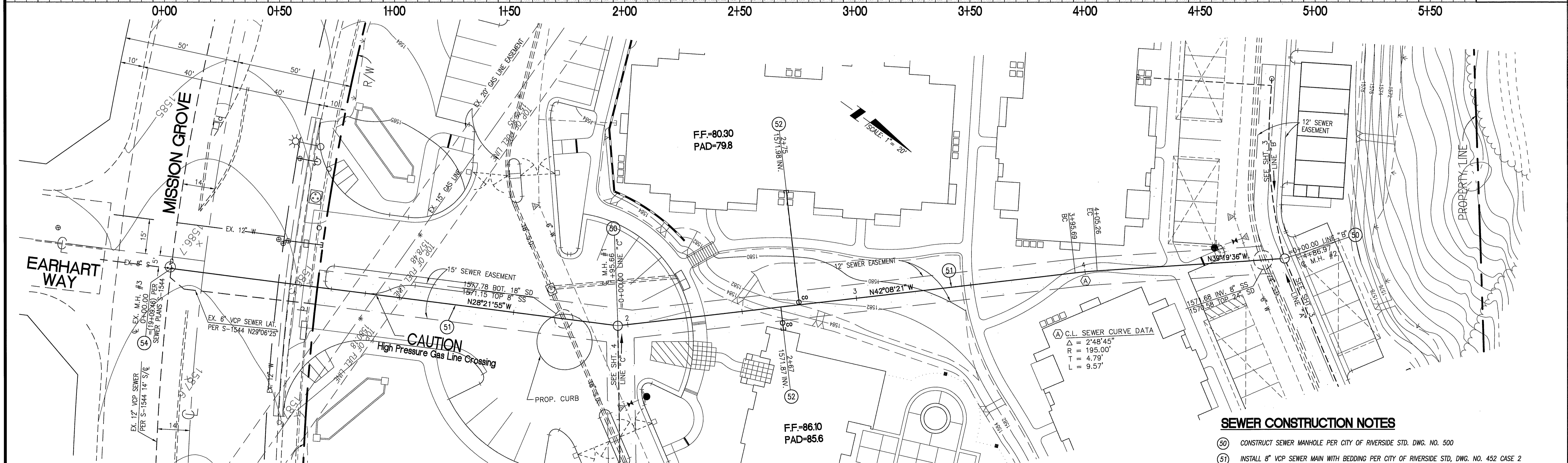
The Keith Companies **TKC**  
 2955 Red Hill Avenue, Costa Mesa, CA 92626 (714) 540-0800  
 PREPARED UNDER THE SUPERVISION OF  
Gerald L. Hofmeister May 19, 2000  
 GERALD L. HOFMEISTER R.C.E. NO. 20187 DWE

MARK DESIGNED BY R.W./A.J. DRAWN BY A.J./T.I. CHECKED BY W.M.

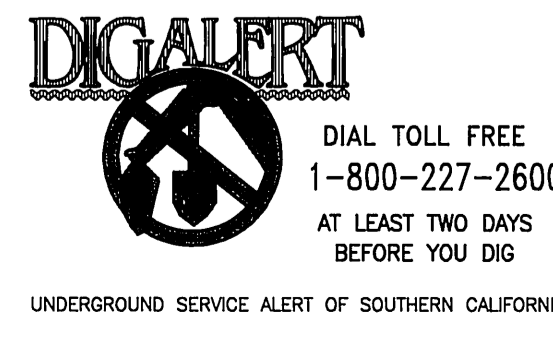




SCALE:  
 HORIZ. 1" = 20'  
 VERT. 1" = 4'



- SEWER CONSTRUCTION NOTES**
- (50) CONSTRUCT SEWER MANHOLE PER CITY OF RIVERSIDE STD. DWG. NO. 500
  - (51) INSTALL 8" VCP SEWER MAIN WITH BEDDING PER CITY OF RIVERSIDE STD. DWG. NO. 452 CASE 2
  - (52) CONSTRUCT 6" PVC (SDR-23.5 MIN.) SEWER LATERAL AND CLEANOUT WITH BEDDING PER CITY OF RIVERSIDE STD. DWG. NO. 562A AND 452 CASE 1, INVERT ELEVATIONS SHOWN ON PLAN. (PRIVATE)
  - (54) JOIN EXISTING MANHOLE
- \* AS-BUILT PER PLAN 5-28-03 LfH
- MAY 4, 2000



**PRIVATE ENGINEER'S NOTICE TO CONTRACTOR**

THE EXISTENCE AND LOCATION OF ANY UNDERGROUND UTILITY PIPES OR STRUCTURE SHOWN ON THESE PLANS WERE OBTAINED BY A SEARCH OF THE AVAILABLE RECORDS. THESE LOCATIONS ARE APPROXIMATE AND SHALL BE CONFIRMED BY THE CONTRACTOR, SO THAT ANY NECESSARY ADJUSTMENT CAN BE MADE IN ALIGNMENT AND/OR GRADE OF THE PROPOSED IMPROVEMENT. THE CONTRACTOR IS REQUIRED TO TAKE DUE PRECAUTIONARY MEASURES TO PROTECT ANY UTILITY LINES SHOWN AND ANY OTHER LINES NOT ON RECORD OR NOT SHOWN ON THESE PLANS.



The Keith Companies **TKC**

2955 Red Hill Avenue, Costa Mesa, CA 92626 (714) 540-0800

PREPARED UNDER THE SUPERVISION OF:  
*Gerald L. Hofmaister* May 19 2000  
 GERALD L. HOFMAISTER R.C.E. NO. 20187 DATE

**CITY OF RIVERSIDE**  
 PUBLIC WORKS DEPARTMENT

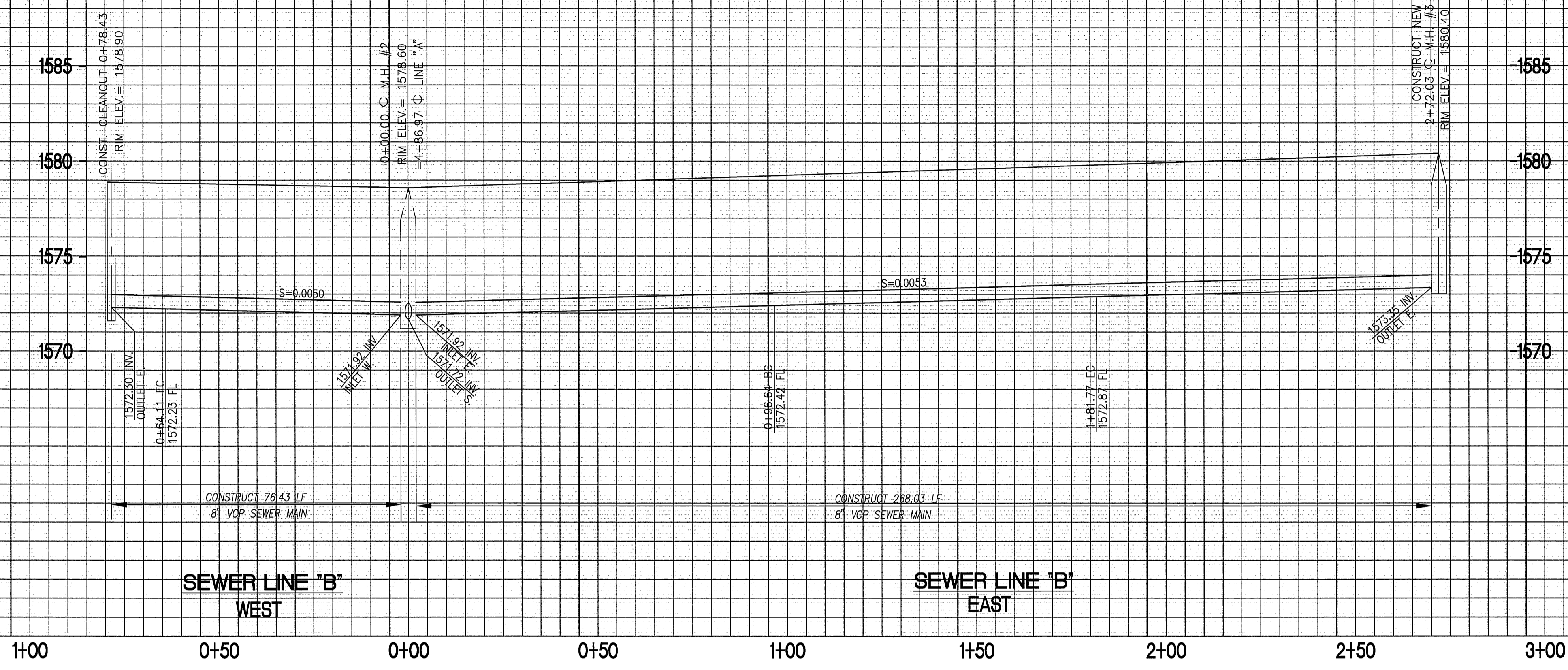
APPROVED BY: DATE BY  
 PRINCIPAL ENGINEER 6/5/00 R. McSwath  
 PARK DEPARTMENT  
 TRAFFIC DIVISION  
 P.W. ENG. MANAGER 6/5/00 TTB  
 PUBLIC WORKS DIRECTOR  
 DATE 6-9-2000

**SEWER LINE "A"**  
 FROM MISSION GROVE TO 487' NW'LY  
 SEWER PLANS FOR  
 PD-002-978  
 7861-7871 MISSION GROVE PARKWAY

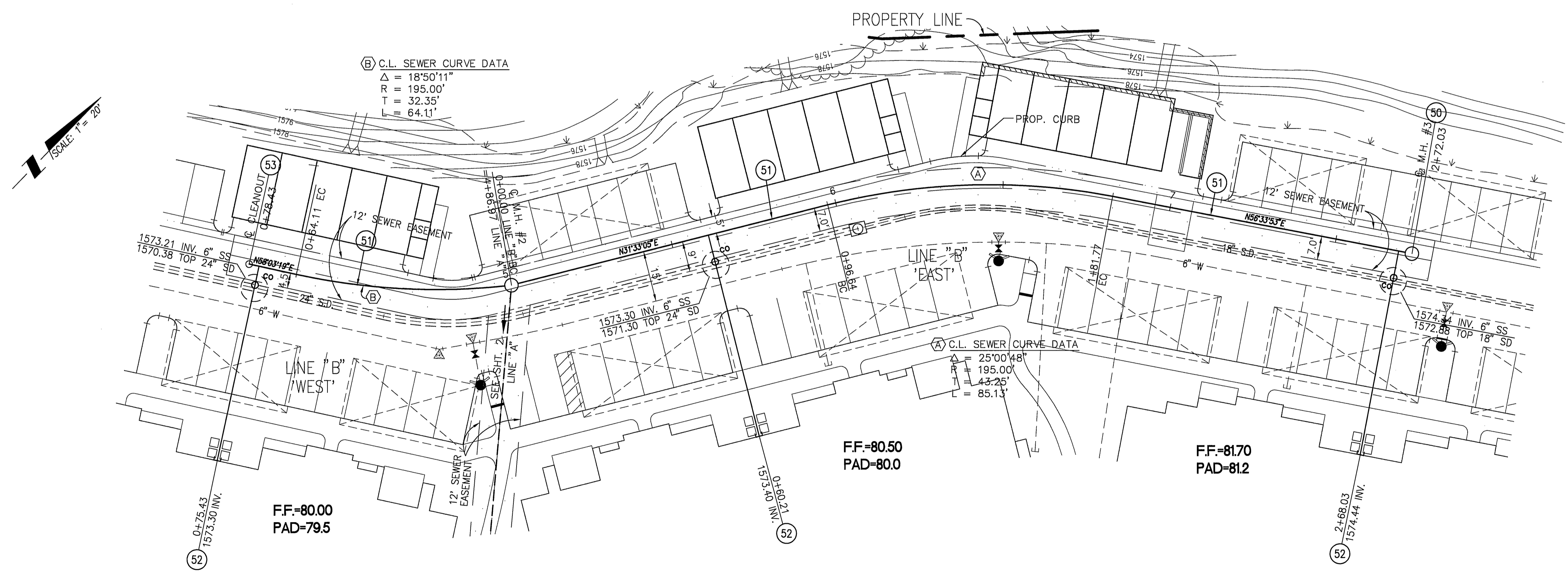
HORIZ. SCALE: 1" = 20' VERT. SCALE: 1" = 4'

PROJECT NO. 13096  
 SHEET **2** OF 5  
 S-1705





SCALE:  
 HORIZ. 1" = 20'  
 VERT. 1" = 4'



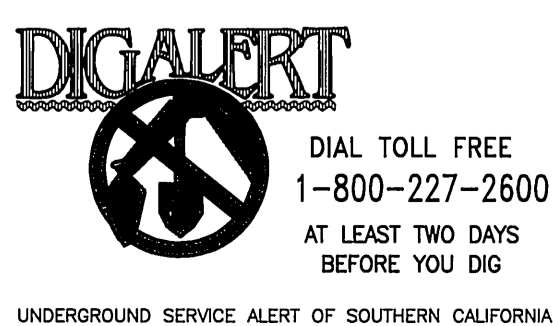
(B) C.L. SEWER CURVE DATA  
 Δ = 18°50'11"  
 R = 195.00'  
 T = 32.35'  
 L = 64.11'

(A) C.L. SEWER CURVE DATA  
 Δ = 25°00'48"  
 R = 195.00'  
 T = 43.25'  
 L = 85.13'

**SEWER CONSTRUCTION NOTES**

- (50) CONSTRUCT SEWER MANHOLE PER CITY OF RIVERSIDE STD. DWG. NO. 500
- (51) INSTALL 8" VCP SEWER MAIN WITH BEDDING PER CITY OF RIVERSIDE STD. DWG. NO. 452 CASE 2
- (52) CONSTRUCT 6" PVC SEWER LATERAL AND CLEANOUT WITH BEDDING PER CITY OF RIVERSIDE STD. DWG. NO. 562A AND 452 CASE 1. INVERT ELEVATIONS SHOWN ON PLAN. (PRIVATE)
- (53) CONSTRUCT SEWER CLEANOUT PER CITY OF RIVERSIDE STD. DWG. NO. 580

\* AS-BUILT PER PLAN 5-28-03 LfH  
 MAY 4, 2000



**PRIVATE ENGINEER'S NOTICE TO CONTRACTOR**  
 THE EXISTENCE AND LOCATION OF ANY UNDERGROUND UTILITY PIPES OR STRUCTURE SHOWN ON THESE PLANS WERE OBTAINED BY A SEARCH OF THE AVAILABLE RECORDS. THESE LOCATIONS ARE APPROXIMATE AND SHALL BE CONFIRMED BY THE CONTRACTOR, SO THAT ANY NECESSARY ADJUSTMENT CAN BE MADE IN ALIGNMENT AND/OR GRADE OF THE PROPOSED IMPROVEMENT. THE CONTRACTOR IS REQUIRED TO TAKE DUE PRECAUTIONARY MEASURES TO PROTECT ANY UTILITY LINES SHOWN AND ANY OTHER LINES NOT ON RECORD OR NOT SHOWN ON THESE PLANS.



The Keith Companies **TKC**  
 2955 Red Hill Avenue, Costa Mesa, CA 92626 (714) 540-0800  
 PREPARED UNDER THE SUPERVISION OF:  
*Gerald L. Hofmeister* May 19, 2000  
 GERALD L. HOFMAISTER (R.C.E. NO. 20187) / DATE

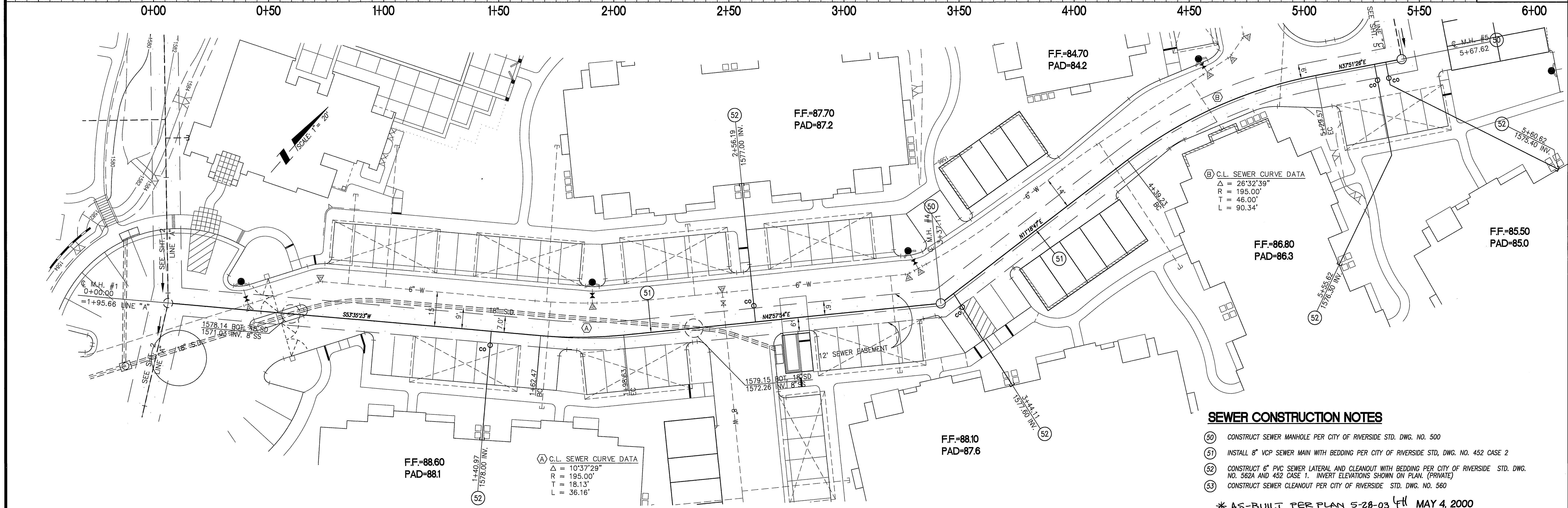
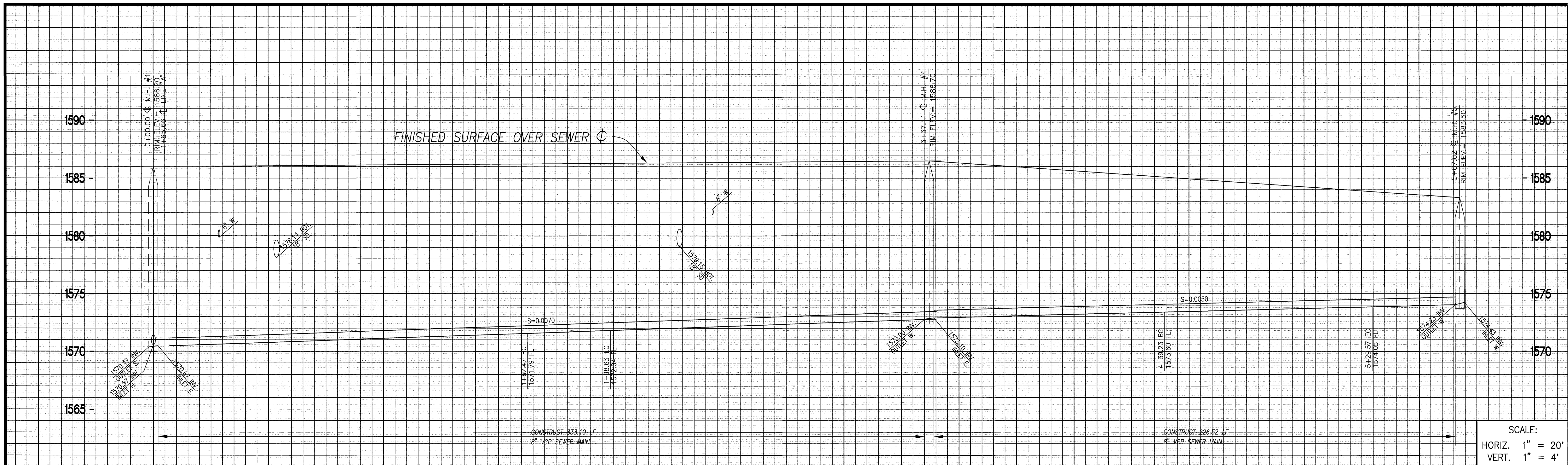
MARK	REVISIONS:	APPR.	DATE
DESIGNED BY AJ	DRAWN BY AJ/CC	CHECKED BY BM	

**CITY OF RIVERSIDE**  
 PUBLIC WORKS DEPARTMENT  
 APPROVED BY: *[Signature]* DATE: *6/9/00*  
 PRINCIPAL ENGINEER  
 PARK DEPARTMENT  
 TRAFFIC DIVISION  
 P.W. ENG. MANAGER: *[Signature]*  
 PUBLIC WORKS DIRECTOR: *R. McBrath*  
 DATE: *6-9-2000*

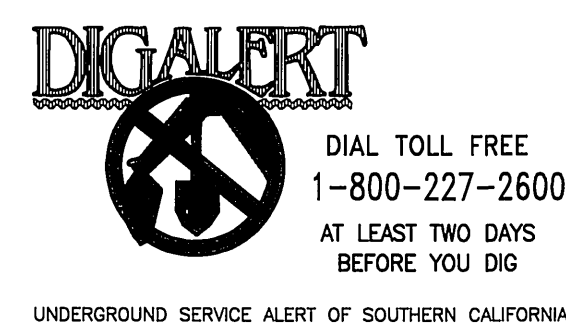
**SEWER LINE "B" WEST & EAST**  
 LINE "B" WEST, STA. 0+00.00 TO 0+78.43 &  
 LINE "B" EAST, STA. 0+00.00 TO 2+72.03  
 SEWER PLANS FOR  
 PD-002-978  
 7861-7871 MISSION GROVE PARKWAY  
 HORIZ. SCALE: 1" = 20' VERT. SCALE: 1" = 4'

PROJECT NO. 13096  
**S-1705**  
 SHEET **3** OF **5**  
 INDEXED 9-12-2000 LfH





- SEWER CONSTRUCTION NOTES**
- (50) CONSTRUCT SEWER MANHOLE PER CITY OF RIVERSIDE STD. DWG. NO. 500
  - (51) INSTALL 8" VCP SEWER MAIN WITH BEDDING PER CITY OF RIVERSIDE STD. DWG. NO. 452 CASE 2
  - (52) CONSTRUCT 6" PVC SEWER LATERAL AND CLEANOUT WITH BEDDING PER CITY OF RIVERSIDE STD. DWG. NO. 562A AND 452 CASE 1. INVERT ELEVATIONS SHOWN ON PLAN. (PRIVATE)
  - (53) CONSTRUCT SEWER CLEANOUT PER CITY OF RIVERSIDE STD. DWG. NO. 560
- \* AS-BUILT PER PLAN 5-28-03 **4th** MAY 4, 2000



**PRIVATE ENGINEER'S NOTICE TO CONTRACTOR**

THE EXISTENCE AND LOCATION OF ANY UNDERGROUND UTILITY PIPES OR STRUCTURE SHOWN ON THESE PLANS WERE OBTAINED BY A SEARCH OF THE AVAILABLE RECORDS. THESE LOCATIONS ARE APPROXIMATE AND SHALL BE CONFIRMED BY THE CONTRACTOR, SO THAT ANY NECESSARY ADJUSTMENT CAN BE MADE IN ALIGNMENT AND/OR GRADE OF THE PROPOSED IMPROVEMENT. THE CONTRACTOR IS REQUIRED TO TAKE DUE PRECAUTIONARY MEASURES TO PROTECT ANY UTILITY LINES SHOWN AND ANY OTHER LINES NOT ON RECORD OR NOT SHOWN ON THESE PLANS.



**The Keith Companies TKC**

2955 Red Hill Avenue, Costa Mesa, CA 92626 (714) 540-0800

PREPARED UNDER THE SUPERVISION OF:  
*Gerald L. Hofmaister* May 19 2000  
 GERALD L. HOFMAISTER P.E. NO. 20187 DATE

**CITY OF RIVERSIDE PUBLIC WORKS DEPARTMENT**

APPROVED BY: PRINCIPAL ENGINEER *[Signature]* DATE: 6/9/00 BY: PUBLIC WORKS DIRECTOR  
 PARK DEPARTMENT  
 TRAFFIC DIVISION  
 P.W. ENG. MANAGER *[Signature]*

MARK: DESIGNED BY: AJ DRAWN BY: AJ/CC CHECKED BY: BM

**CITY OF RIVERSIDE PUBLIC WORKS DEPARTMENT**

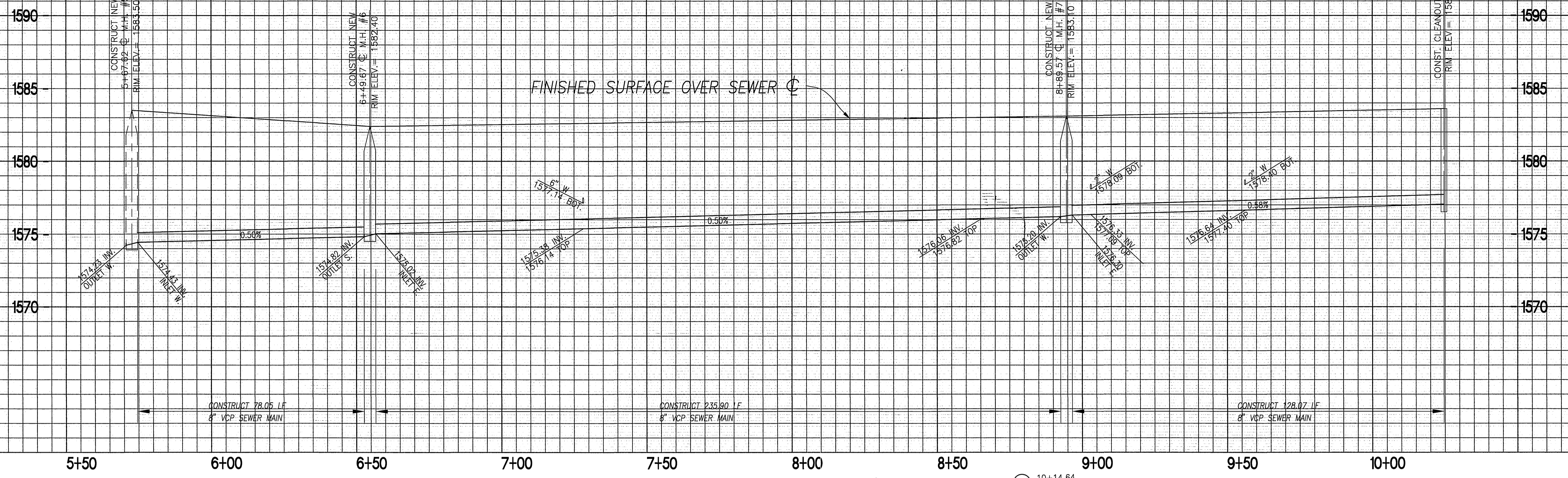
APPROVED BY: PRINCIPAL ENGINEER *[Signature]* DATE: 6-9-2000 BY: PUBLIC WORKS DIRECTOR  
 PARK DEPARTMENT  
 TRAFFIC DIVISION  
 P.W. ENG. MANAGER *[Signature]*

**SEWER LINE "C"**  
 FROM STA. 0+00.00 TO STA. 7+77.94  
 SEWER PLANS FOR  
 PD-002-978  
 7861-7871 MISSION GROVE PARKWAY

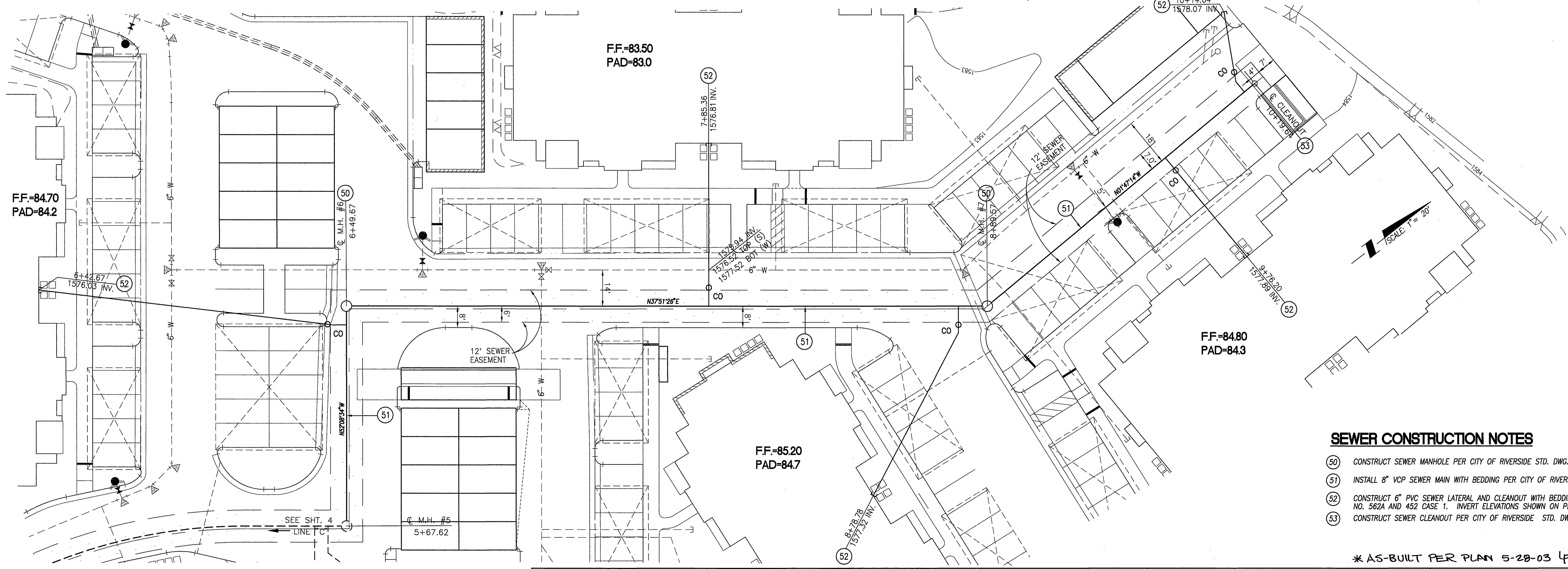
PROJECT NO. 13096  
 S-1705  
 SHEET 4 OF 5

HORIZ. SCALE: 1" = 20' VERT. SCALE: 1" = 4'





SCALE:  
 HORIZ. 1" = 20'  
 VERT. 1" = 4'

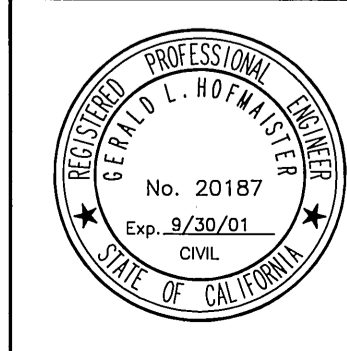


- SEWER CONSTRUCTION NOTES**
- (50) CONSTRUCT SEWER MANHOLE PER CITY OF RIVERSIDE STD. DWG. NO. 500
  - (51) INSTALL 8" VCP SEWER MAIN WITH BEDDING PER CITY OF RIVERSIDE STD. DWG. NO. 452 CASE 2
  - (52) CONSTRUCT 6" PVC SEWER LATERAL AND CLEANOUT WITH BEDDING PER CITY OF RIVERSIDE STD. DWG. NO. 562A AND 452 CASE 1. INVERT ELEVATIONS SHOWN ON PLAN. (PRIVATE)
  - (53) CONSTRUCT SEWER CLEANOUT PER CITY OF RIVERSIDE STD. DWG. NO. 560

\* AS-BUILT PER PLAN 5-28-03 LfH  
 MAY 4, 2000



**PRIVATE ENGINEER'S NOTICE TO CONTRACTOR**  
 THE EXISTENCE AND LOCATION OF ANY UNDERGROUND UTILITY PIPES OR STRUCTURE SHOWN ON THESE PLANS WERE OBTAINED BY A SEARCH OF THE AVAILABLE RECORDS. THESE LOCATIONS ARE APPROXIMATE AND SHALL BE CONFIRMED BY THE CONTRACTOR, SO THAT ANY NECESSARY ADJUSTMENT CAN BE MADE IN ALIGNMENT AND/OR GRADE OF THE PROPOSED IMPROVEMENT. THE CONTRACTOR IS REQUIRED TO TAKE DUE PRECAUTIONARY MEASURES TO PROTECT ANY UTILITY LINES SHOWN AND ANY OTHER LINES NOT ON RECORD OR NOT SHOWN ON THESE PLANS.



The Keith Companies **TKC**  
 2955 Red Hill Avenue, Costa Mesa, CA 92626 (714) 540-0800  
 PREPARED UNDER THE SUPERVISION OF:  
*Gerald Hofmaister* May 19 2000  
 GERALD L. HOFMAISTER P.E. NO. 20187 DATE

DESIGNED BY	APPROVED BY	DATE
AJ	R.M.B.	6-9-2000

**CITY OF RIVERSIDE**  
 PUBLIC WORKS DEPARTMENT  
 APPROVED BY: *R.M.B.* PUBLIC WORKS DIRECTOR  
 DATE: 6-9-2000

**SEWER LINE "C"**  
 FROM STA. 0+00.00 TO STA. 7+77.94  
 SEWER PLANS FOR  
 PD-002-978  
 7861-7871 MISSION GROVE PARKWAY

PROJECT NO. 13096  
 S-1705  
 SHEET 5 OF 5  
 HORIZ. SCALE: 1" = 20' VERT. SCALE: 1" = 4'