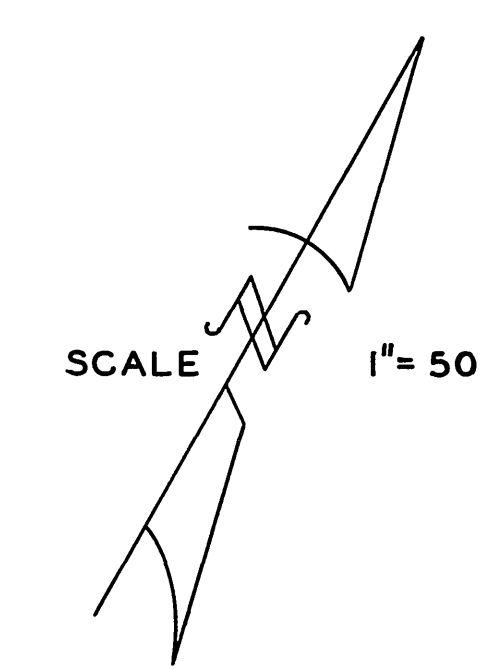
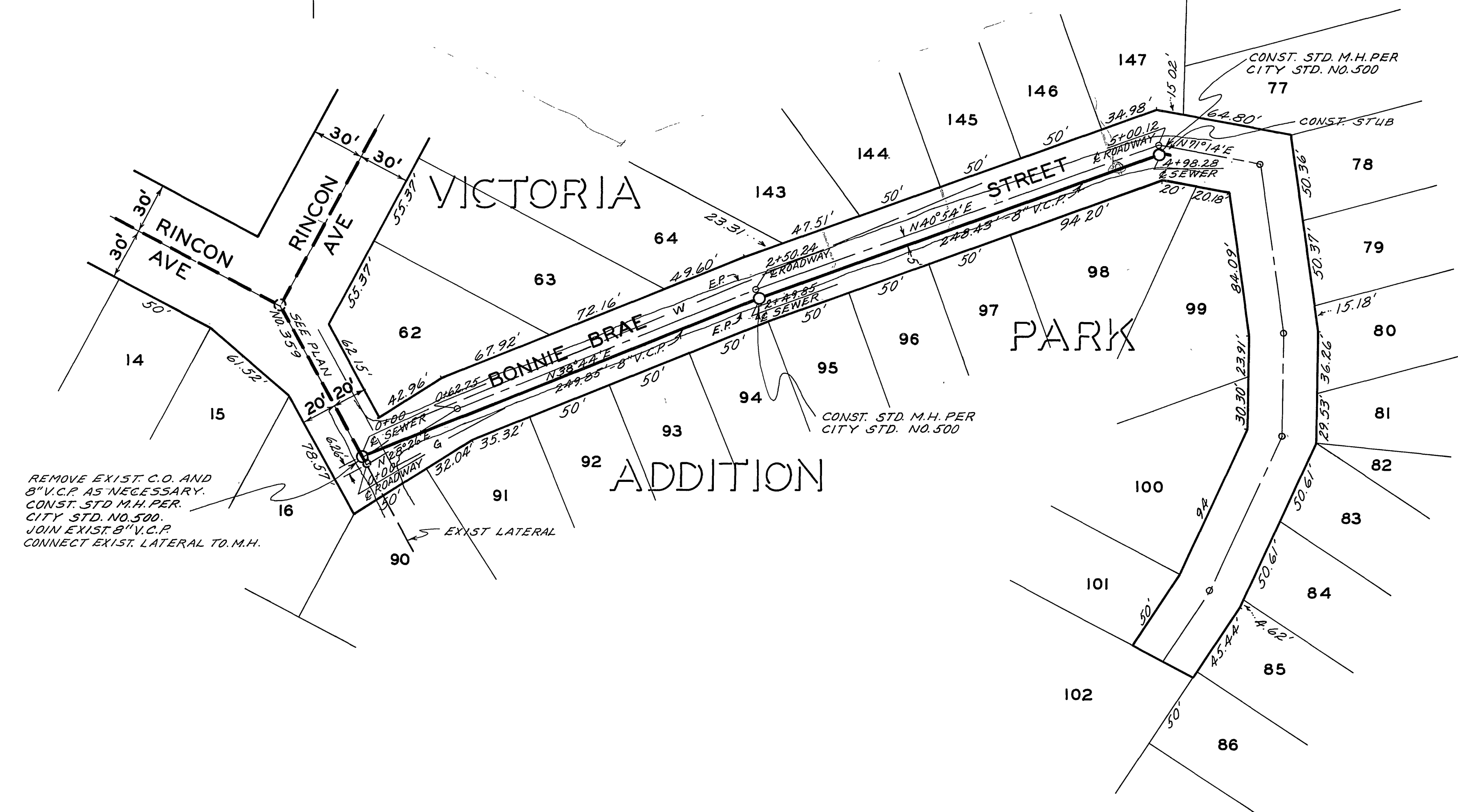


B.M. 999.695 CAPPED MON. AT STA. 0+62.75 ON CL. BONNIE BRAE ST.
 F.B. 644/45-53
 SCALE : 1" = 50' HORIZ.
 1" = 5' VERT.



NOTES:

- IT SHALL BE THE RESPONSIBILITY OF THE CONTRACTOR TO CLEAR THE RIGHT OF WAY IN ACCORDANCE WITH THE PROVISIONS OF THE LAW AS IT AFFECTS EACH UTILITY INCLUDING IRRIGATION LINES AND APPURTENANCES AND AT NO COST TO THE CITY
- THE CONTRACTOR MUST UNCOVER EXIST. SEWER AT THE POINT OF JOIN AND HAVE CITY CREW TAKE THE ELEV. OF THE PIPE BEFORE A CUT SHEET MAY BE ISSUED.
- EXACT NUMBER AND LOCATION OF LATERALS TO BE DETERMINED IN THE FIELD

REMOVE EXIST. C.O. AND 8" V.C.P. AS NECESSARY. CONST. STD. M.H. PER CITY STD. NO. 500. JOIN EXIST. 8" V.C.P. CONNECT EXIST. LATERAL TO M.H.

See Sewers - Gen 2
 Misc u
 [Signature]

| REVISIONS | | | CITY OF RIVERSIDE CALIFORNIA DEPARTMENT OF PUBLIC WORKS |
|-------------|------|-------------|------------------------------------------------------------|
| MARK | DATE | DESCRIPTION | |
| | | | BONNIE BRAE SEWER RINCON AVE TO END |
| | | | |
| DESIGN BY | L.P. | CHECKED BY | wds |
| DRAWN BY | L.P. | APPROVED BY | [Signature] |
| DATE | | DATE | July 24, 1959 |
| PROJECT NO. | | | S-174 |