

GENERAL NOTES

- NO PERSON SHALL PERFORM ANY CONSTRUCTION ACTIVITY OR INSTALL ANY OBJECTS WITHIN THE PUBLIC RIGHTS-OF-WAY OR EASEMENTS OF THE CITY OF RIVERSIDE WITHOUT A VALID CONSTRUCTION PERMIT OR A STREET OPENING PERMIT OR AN ENCROACHMENT PERMIT ISSUED BY THE CITY'S PUBLIC WORKS DEPARTMENT.
- IT SHALL BE THE RESPONSIBILITY OF THE CONTRACTOR TO CLEAR THE RIGHT-OF-WAY IN ACCORDANCE WITH THE PROVISIONS OF LAW AS IT AFFECTS EACH UTILITY INCLUDING IRRIGATION LINES AND APPURTENANCES AND AT NO COST TO THE CITY.
- CONSTRUCTION SHALL BE IN ACCORDANCE WITH THE CITY OF RIVERSIDE DEPARTMENT OF PUBLIC WORKS, STANDARD DRAWINGS, ITS SUPPLEMENTAL NOTES AND THE STANDARD SPECIFICATIONS FOR PUBLIC WORKS CONSTRUCTION, CURRENT EDITION.
- THE PRIVATE ENGINEER SIGNING THESE PLANS IS RESPONSIBLE FOR ASSURING THE ACCURACY AND ACCEPTABILITY OF THE WORK HEREON. IN THE EVENT OF DISCREPANCIES ARISING DURING CONSTRUCTION, THE PRIVATE ENGINEER SHALL BE RESPONSIBLE FOR DETERMINING AN ACCEPTABLE SOLUTION AND REVISING THE PLANS FOR APPROVAL BY THE CITY.
- QUANTITIES SHOWN ARE FOR INFORMATION ONLY AND THE CITY OF RIVERSIDE IS NOT RESPONSIBLE FOR THEIR ACCURACY.
- THE DEVELOPER SHALL BE RESPONSIBLE FOR PRESERVING OR RE-ESTABLISHING AND REFERENCING SURVEY MONUMENTS DESTROYED, DISTURBED OR BURIED AS A RESULT OF CONSTRUCTION SHOWN HEREON.
- ALL FLAGGED ELEVATIONS SHALL BE STAKED IN THE FIELD BY THE PRIVATE ENGINEER.
- ANY TRAFFIC CONTROL STRIPING OBLITERATED AND/OR BADLY WORN DURING CONSTRUCTION SHALL BE RESTORED BY THE CONTRACTOR WITHIN FIVE DAYS AFTER NOTIFICATION FROM THE CITY INSPECTOR.
- THE CONTRACTOR SHALL CALL IN A LOCATION REQUEST TO UNDERGROUND SERVICE ALERT (USA), PHONE # 1-800-227-2600, TWO WORKING DAYS BEFORE DIGGING. NO CONSTRUCTION PERMIT WILL BE ISSUED BY THE PUBLIC WORKS DEPARTMENT INVOLVING EXCAVATION FOR UNDERGROUND FACILITIES UNLESS THE APPLICANT HAS BEEN PROVIDED AN INQUIRY IDENTIFICATION NUMBER BY U.S.A.
- CONTRACTOR IS TO VERIFY EXISTING SEWER LOCATION AND ELEVATION PRIOR TO START OF CONSTRUCTION.
- NO FINISHED FLOOR ELEVATION SHALL BE LESS THAN 6" ABOVE THE UPPER MANHOLE RIM ELEVATION OF THE SEWER LINE SEGMENT BEING CONNECTED TO, WITHOUT HAVING A PROPER BACKWATER VALVE INSTALLED IN THE LATERAL.
- A PLUG SHOULD BE INSTALLED AND WILL REMAIN IN PLACE WHERE THE MAIN SEWER CONNECTS WITH THE EXISTING SEWER UNTIL THE NEW SEWER IS ACCEPTED BY THE CITY.
- THE SEWER CONTRACTOR SHALL ADJUST MANHOLES TO FINAL GRADE AFTER PAVING IS COMPLETED.

NOTICE TO CONTRACTOR

ACCORDING TO INFORMATION PROVIDED BY UNDERGROUND SERVICE ALERT (U.S.A.) DATED FEBRUARY 18 1999, THE FOLLOWING ORGANIZATIONS ARE U.S.A. MEMBERS WITHIN THE PROJECT AREA:

CHARTER COMMUNICATIONS ATT
 PACIFIC BELL CITY OF RIVERSIDE
 THE GAGE CANAL COMPANY THE GAS COMPANY
 RIVERSIDE HIGHLAND WATER

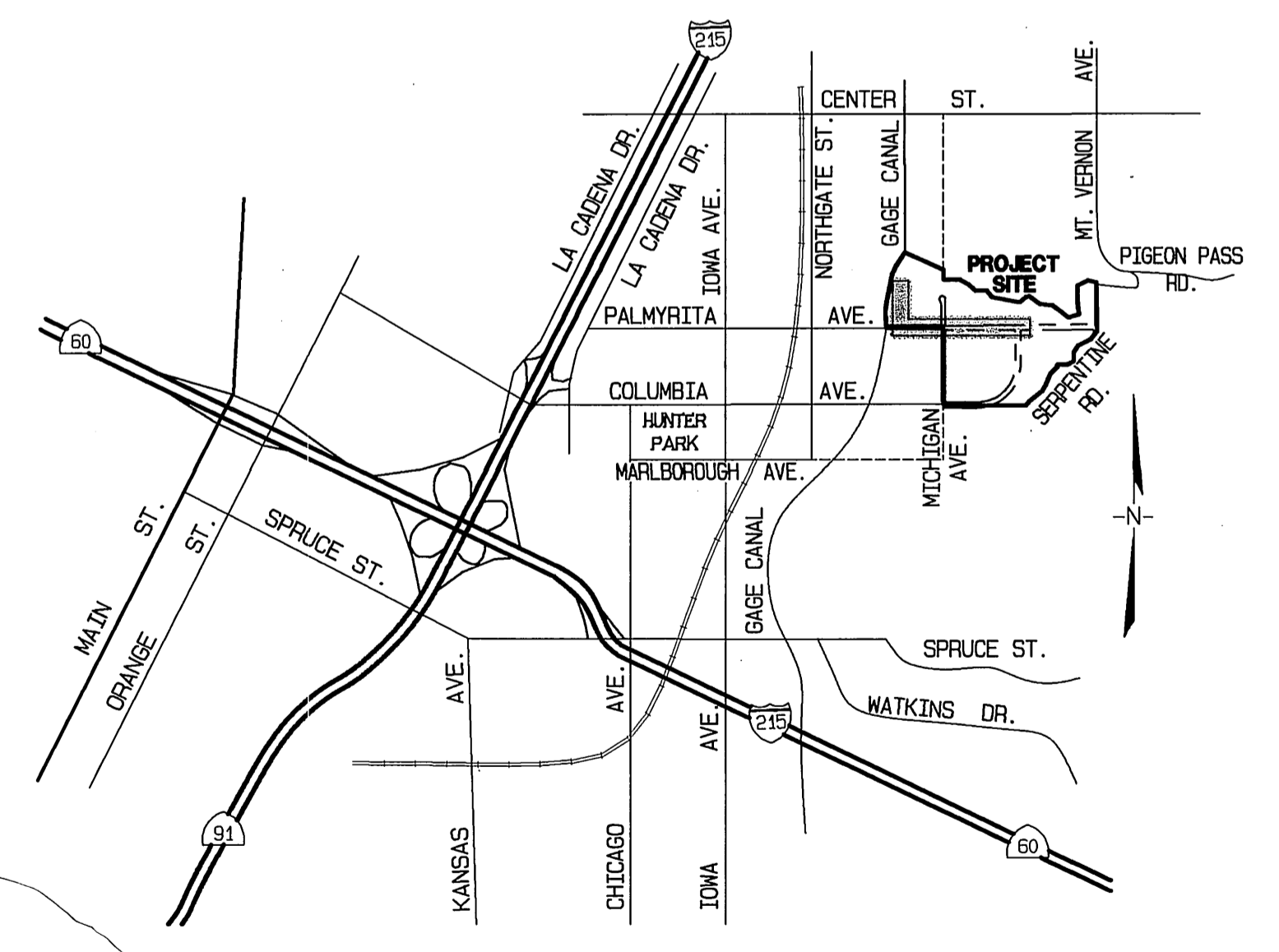
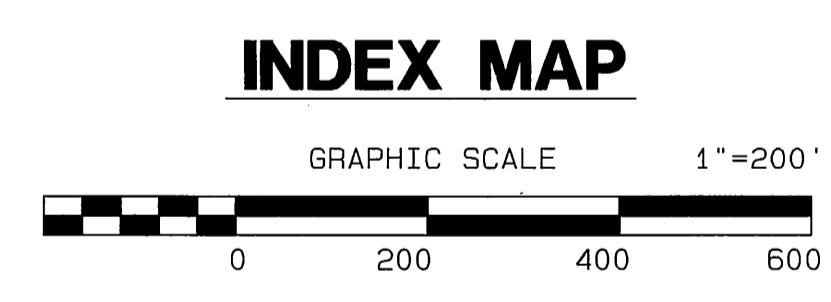
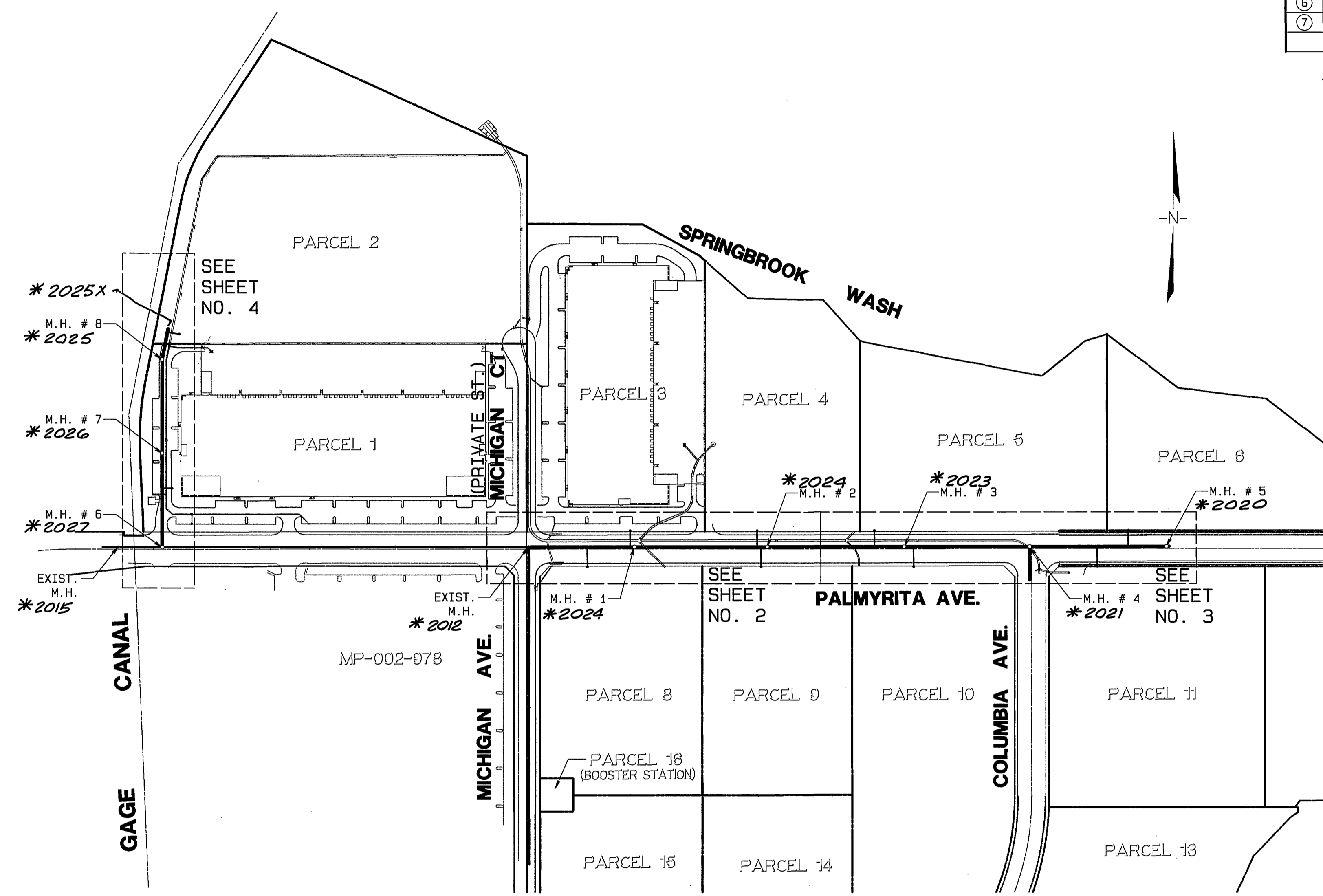
THE EXISTENCE AND LOCATIONS OF ALL UNDERGROUND UTILITIES (UTILITY PIPES, STRUCTURES, ETC.) SHOWN ON THESE PLANS (MAIN LINES ONLY - NO SERVICE LATERALS) WERE ASCERTAINED BY A REVIEW OF RECORDS PROVIDED BY THESE MEMBER AGENCIES AND ARE APPROXIMATE. NEITHER THE OWNER NOR THE ENGINEER ASSUMES ANY RESPONSIBILITY FOR UTILITIES NOT SHOWN OR NOT IN THE LOCATION SHOWN.

THE CONTRACTOR IS REQUIRED TO TAKE DUE PRECAUTIONARY MEASURES TO PROTECT ALL UTILITIES SHOWN ON THESE PLANS AND/OR ANY OTHER UNDERGROUND UTILITIES NOT OF RECORD OR NOT SHOWN ON THESE PLANS.

CONSTRUCTION NOTES AND QUANTITY ESTIMATE: *

ITEM	DESCRIPTION	AMOUNT	UNIT
①	INSTALL 10" VCP SEWER MAIN, BEDDING PER CITY OF RIV. STD. DWG. NO. 452, (CASE II).	1612	L.F.
②	INSTALL 8" VCP SEWER MAIN, BEDDING PER CITY OF RIV. STD. DWG. NO. 452, (CASE II).	635	L.F.
③	CONSTRUCT MANHOLE PER CITY OF RIV. DWG. NO. 500.	8	EA.
④	INSTALL 6" VCP SEWER LATERAL WITH P.L. C.O. PER CITY OF RIV. STD. DWG. NO. 562A.	10	EA.
⑤	CONSTRUCT SEWER CLEANOUT PER CITY OF RIV. STD. DWG. NO. 560.	1	EA.
⑥	INSTALL SEWER PLUG (SIZE PER PLAN)	2	EA.
⑦	REMOVE AND REPLACE EXIST. PAVEMENT AS NEEDED PER CITY OF RIV. STD. DWG. NO. 453.	1	L.S.

* QUANTITIES SHOWN ON THESE PLANS ARE FOR ESTIMATING PURPOSES ONLY. CONTRACTOR SHALL VERIFY ALL QUANTITIES AND BID A COMPLETE JOB.



CHARTER COMMUNICATIONS
 APPROVED BY: *[Signature]* DATE: 4-4-03

SOUTHERN CALIFORNIA GAS COMPANY
 APPROVED BY: *[Signature]* DATE: 4/15/03

CITY OF RIVERSIDE OVERHEAD & UNDERGROUND
 APPROVED BY: *[Signature]* DATE: 4-14-03

PACIFIC BELL
 APPROVED BY: *[Signature]* DATE: 4-8-03

DIG ALERT
 DIAL BEFORE YOU DIG
 TWO WORKING DAYS BEFORE YOU DIG
 A PUBLIC SERVICE BY 1-800-227-2600
 UNDERGROUND SERVICE ALERT

BENCH MARK: "JB-D3"
 LEAD AND TACK IN THE TOP OF CURB, 3.5 FEET NORTH OF THE B.C.R. OF THE NORTHWEST CURB RETURN AT PALMYRITA AVENUE AND IOWA AVENUE.
 ELEV. = 918.908

CITY OF RIVERSIDE WATER DEPARTMENT
 APPROVED BY: *[Signature]* DATE: 4/9/03

CITY BUSINESS TAX CERTIFICATE NO. 5751 EXP. 12-31-03

ALBERT A. WEBB ASSOCIATES
 CIVIL ENGINEERS
 3788 McCRAY ST.
 RIVERSIDE, CA. 92506
 PH: (909) 686-1070
 FAX: (909) 788-1256
 APPROVED BY: *[Signature]* DATE: 4-7-03
 R.C.E. NO. C44762

CITY OF RIVERSIDE, CALIFORNIA PUBLIC WORKS DEPARTMENT

APPROVED BY: *[Signature]* DATE: 4/15/03

PRINCIPAL ENGINEER: *[Signature]*
 PARK DEPARTMENT: *[Signature]*
 TRAFFIC DIVISION: *[Signature]*

DATE: 4/15/03

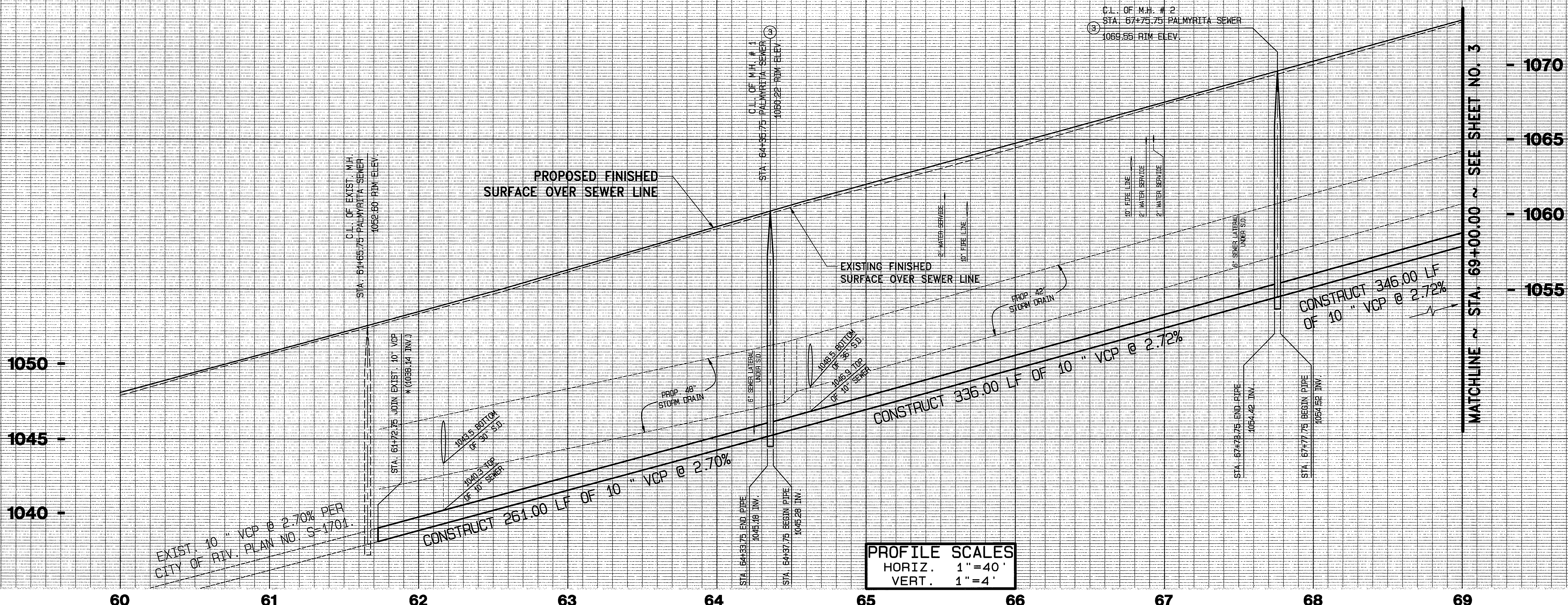
* AS-BUILT PER PLANS 1-06-06 LPH

SEWER IMPROVEMENT PLANS
 FOR
PARCEL MAP No. 30485-1
TITLE SHEET

SCALE: 1" = 200'

ACCOUNT NO.
 DRAWING NUMBER
S- 1784
 SHEET **1** OF **4**
 01061UT.PRO

6:2001101-0061\Drawings\01061UT.dwg Mar 20 2003 11:44:02AM

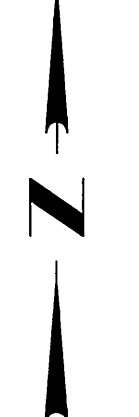
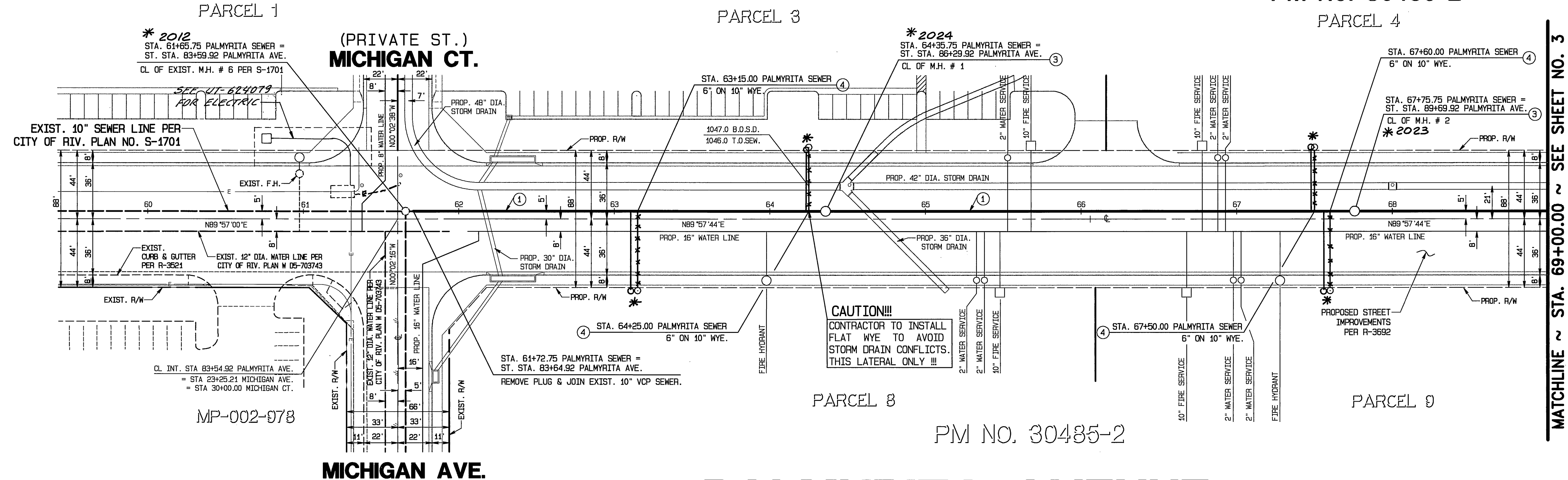


PROFILE SCALES
 HORIZ. 1" = 40'
 VERT. 1" = 4'

MATCHLINE ~ STA. 69+00.00 ~ SEE SHEET NO. 3

PM NO. 30485-1

PM NO. 30485-2



* CONTRACTOR SHALL VERIFY EXACT LOCATION AND ELEVATION PRIOR TO CONSTRUCTION.

CONSTRUCTION NOTES:

- ① INSTALL 10" VCP SEWER MAIN, BEDDING PER CITY OF RIV. STD. DWG. NO. 452, (CASE II).
- ② CONSTRUCT MANHOLE PER CITY OF RIV. DWG. NO. 500.
- ④ INSTALL 6" VCP SEWER LATERAL WITH P.L. C.O. PER CITY OF RIV. STD. DWG. NO. 562A.

MATCHLINE ~ STA. 69+00.00 ~ SEE SHEET NO. 3

PALMYRITA AVENUE

CHARTER COMMUNICATIONS

APPROVED BY: *[Signature]* DATE: 4-4-03

DIGALERT

DIAL BEFORE YOU DIG
TOLL FREE

A PUBLIC SERVICE BY 1-800-227-2600
UNDERGROUND SERVICE ALERT

SOUTHERN CALIFORNIA GAS COMPANY

APPROVED BY: *[Signature]* DATE: 4/18/03

CITY OF RIVERSIDE OVERHEAD & UNDERGROUND

APPROVED BY: *[Signature]* DATE: 4-14-03

PACIFIC BELL

APPROVED BY: *[Signature]* DATE: 4-8-03

BENCH MARK: "JB-D3"

LEAD AND TACK IN THE TOP OF CURB, 3.5 FEET NORTH OF THE B.C.R. OF THE NORTHWEST CURB RETURN AT PALMYRITA AVENUE AND IONA AVENUE.
ELEV. = 918.908

CITY OF RIVERSIDE WATER DEPARTMENT

APPROVED BY: *[Signature]* DATE: 4/4/03



ALBERT A. WEBB CIVIL ENGINEERS

3788 McCRAV ST.
RIVERSIDE, CA. 92506
PH: (909) 686-1070
FAX: (909) 788-1256

APPROVED BY: *[Signature]* DATE: 4-7-03

R.C.E. NO. C44762

DESIGNED BY: VMS DRAWN BY: VMS CHECKED BY: SRH

MARK	REVISIONS	APPR. DATE

CITY OF RIVERSIDE, CALIFORNIA PUBLIC WORKS DEPARTMENT

APPROVED BY: *[Signature]* DATE: 5/1/03

PRINCIPAL ENGINEER

PARK DEPARTMENT

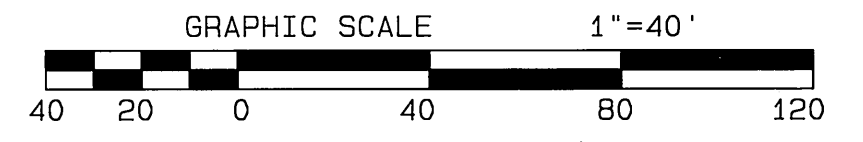
TRAFFIC DIVISION

SEWER IMPROVEMENT PLANS FOR PARCEL MAP No. 30485-1 PALMYRITA AVENUE FROM MICHIGAN AVE. TO STA. 69+00.00

SCALE: HORIZ. 1" = 40' , VERT. 1" = 4'

ACCOUNT NO. DRAWING NUMBER S-1784 SHEET 2 OF 4

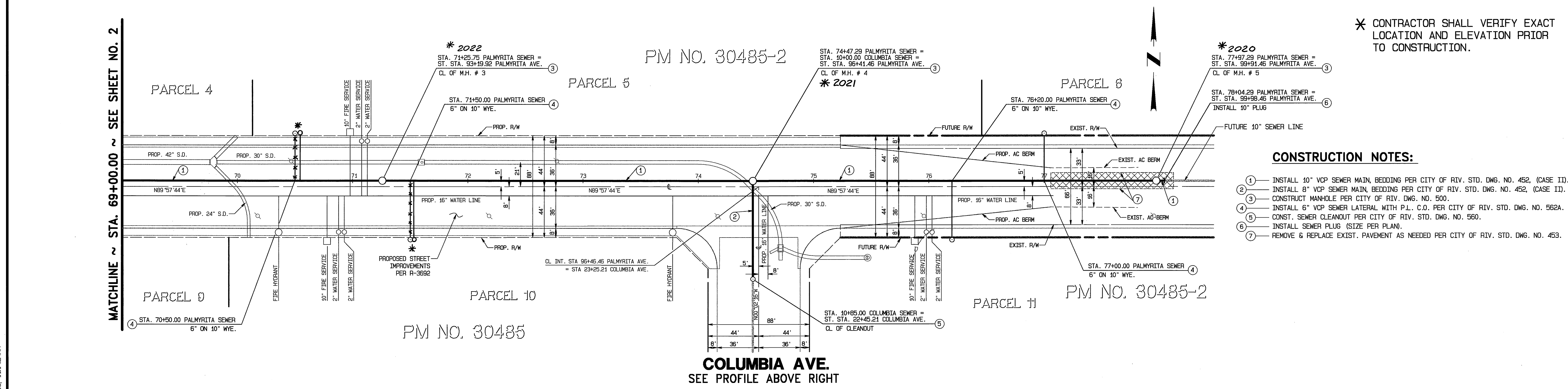
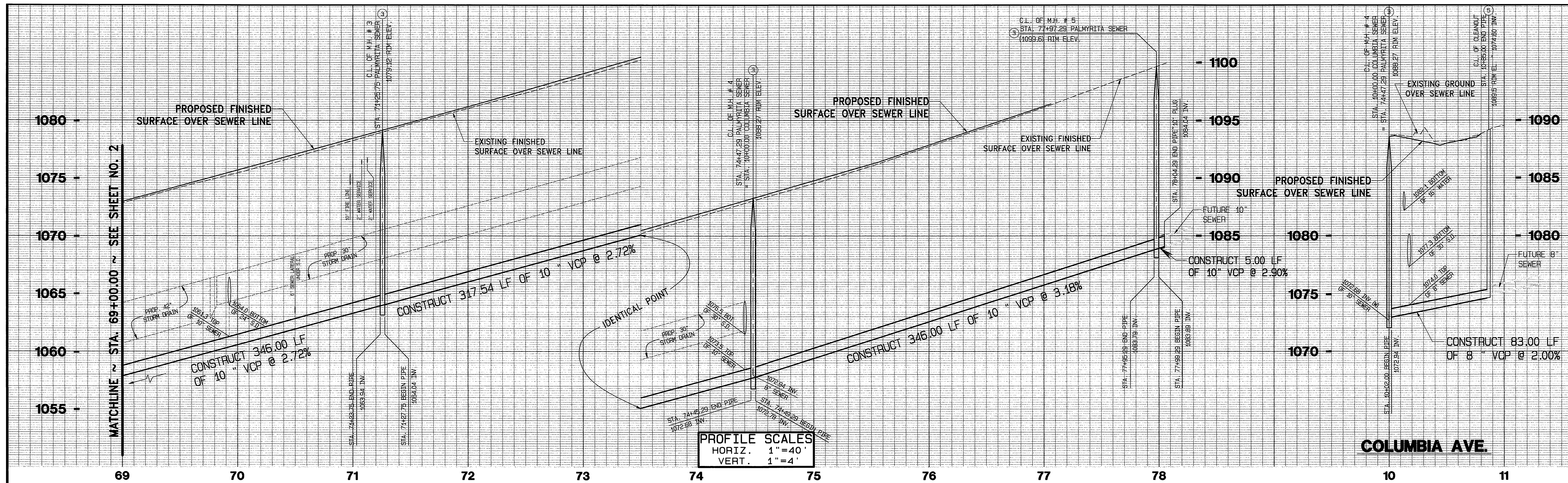
010061UT.PRO



* AS-BUILT PER PLANS 1-06-06 LK

INDEXED 5-15-03 fcl

6:\2001\10-06\1\0651\0651UT.dwg Mar 20, 2003 11:14:13AM



PALMYRITA AVENUE

CHARTER COMMUNICATIONS

APPROVED BY: *[Signature]* DATE: 4-4-03

DIGALERT

DIAL BEFORE YOU DIG
TWO WORKING DAYS BEFORE YOU DIG
A PUBLIC SERVICE BY 1-800-227-2600
UNDERGROUND SERVICE ALERT

SOUTHERN CALIFORNIA GAS COMPANY

APPROVED BY: *[Signature]* DATE: 4/15/03

CITY OF RIVERSIDE OVERHEAD & UNDERGROUND

APPROVED BY: *[Signature]* DATE: 4-14-03

PACIFIC BELL

APPROVED BY: *[Signature]* DATE: 4-8-03

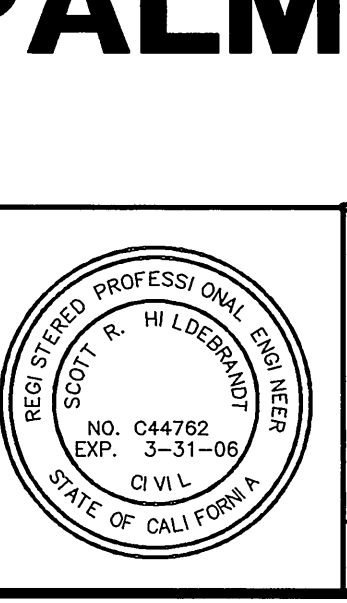
BENCH MARK: "JB-D3"

LEAD AND TACK IN THE TOP OF CURB, 3.5 FEET NORTH OF THE S.C.R. OF THE NORTHWEST CURB RETURN AT PALMYRITA AVENUE AND IOWA AVENUE.

ELEV. = 918.908

CITY OF RIVERSIDE WATER DEPARTMENT

APPROVED BY: *[Signature]* DATE: 4/6/03



ALBERT A. WEBB ASSOCIATES

CIVIL ENGINEERS
3788 McCRAY ST.
RIVERSIDE, CA. 92506
PH: (909) 686-1070
FAX: (909) 788-1256

APPROVED BY: *[Signature]* DATE: 4-2-03
H.C.E. NO. C44782

W.O. 01-0061 FOR: Operating Engineers Trust Funds

MARK	REVISIONS	APPR.	DATE

DESIGNED BY: VMS DRAWN BY: VMS CHECKED BY: SRH

CITY OF RIVERSIDE, CALIFORNIA PUBLIC WORKS DEPARTMENT

APPROVED BY: *[Signature]* DATE: 5/1/03

PRINCIPAL ENGINEER
[Signature]

PARK DEPARTMENT

TRAFFIC DIVISION

DATE: 5/1/03

SEWER IMPROVEMENT PLANS FOR PARCEL MAP No. 30485-1 PALMYRITA AVENUE FROM STA. 69+00.00 TO STA. 77+17.29

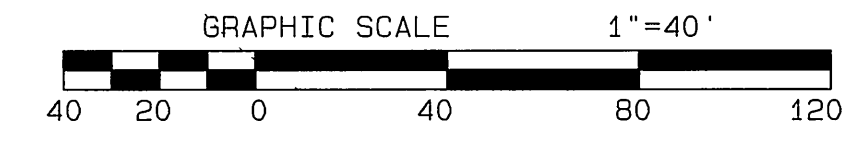
ACCOUNT NO. 101061UT.PRO

DRAWING NUMBER **S-1784**

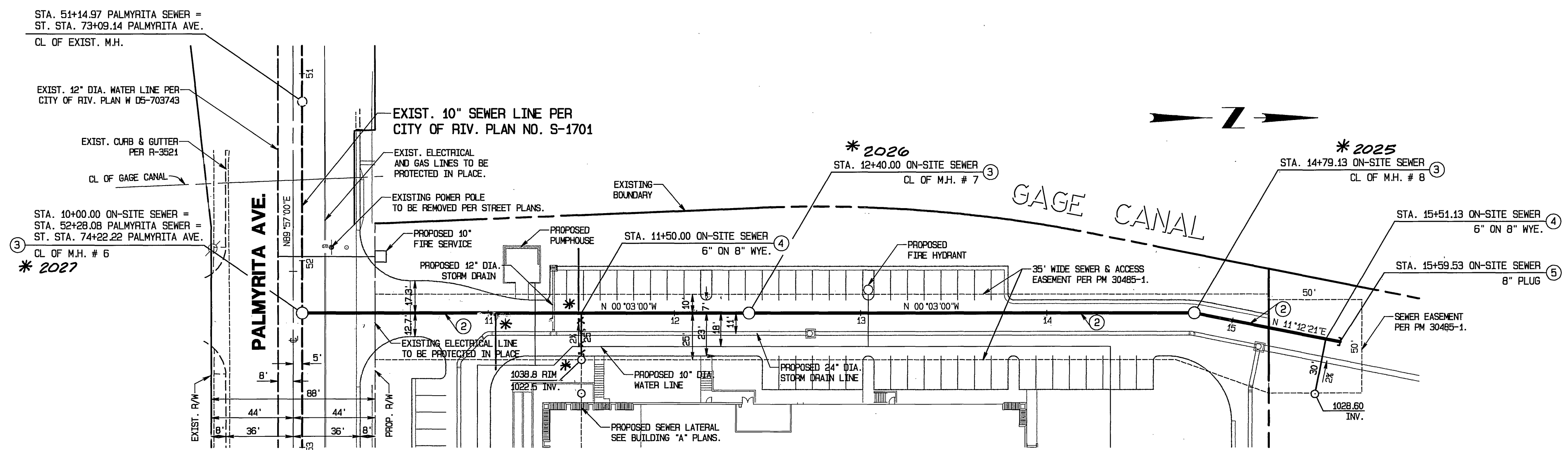
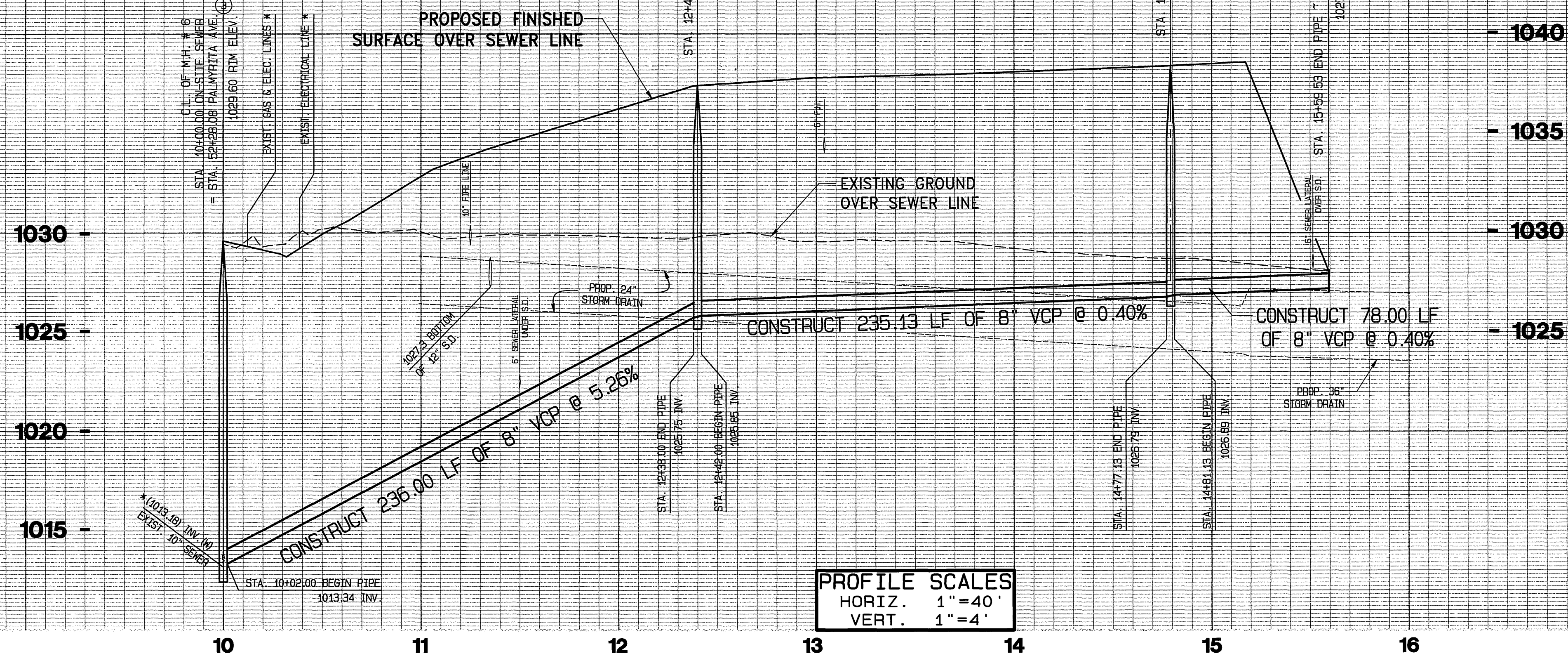
SHEET **3** OF **4**

SCALE: HORIZ. 1"=40' VERT. 1"=4'

DATE: 5/1/03



* AS-BUILT PER PLANS 1-06-06 LFT

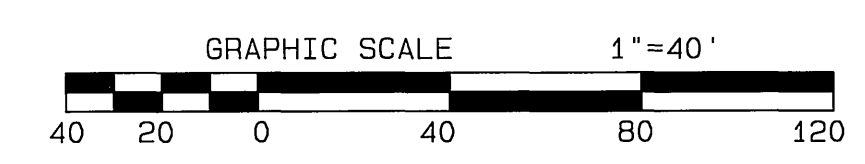


PARCEL 1
 PARCEL 2
 PM NO. 30485-1

* CONTRACTOR SHALL VERIFY EXACT LOCATION AND ELEVATION PRIOR TO CONSTRUCTION.

CONSTRUCTION NOTES:

- ② INSTALL 8" VCP SEWER MAIN, BEDDING PER CITY OF RIV. STD. DWG. NO. 452, (CASE II).
- ③ CONSTRUCT MANHOLE PER CITY OF RIV. DWG. NO. 500.
- ④ INSTALL 6" VCP SEWER LATERAL WITH P.L. C.O. PER CITY OF RIV. STD. DWG. NO. 562A.
- ⑤ INSTALL SEWER PLUG (SIZE PER PLAN)



* AS-BUILT PER PLANS 1-06-06 4th

CHARTER COMMUNICATIONS

APPROVED BY: *[Signature]* DATE: 4-4-03

DIGIALERT

DIAL BEFORE YOU DIG
 TOLL FREE
 A PUBLIC SERVICE BY 1-800-227-2600
 UNDERGROUND SERVICE ALERT

TWO WORKING DAYS BEFORE YOU DIG

SOUTHERN CALIFORNIA GAS COMPANY

APPROVED BY: *[Signature]* DATE: 4/18/03

CITY OF RIVERSIDE OVERHEAD & UNDERGROUND

APPROVED BY: *[Signature]* DATE: 4-14-03

PACIFIC BELL

APPROVED BY: *[Signature]* DATE: 4-8-03

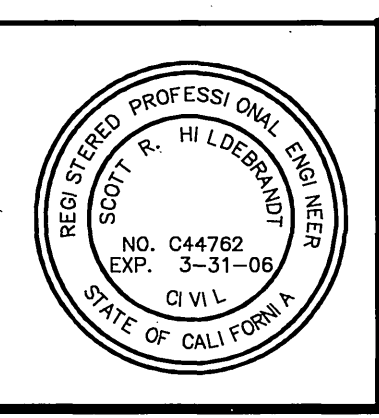
BENCH MARK: "JB-D3"

LEAD AND TACK IN THE TOP OF CURB, 3.5 FEET NORTH OF THE S.C.G. OF THE NORTHWEST CURB RETURN AT PALMYRITA AVENUE AND IOWA AVENUE.

ELEV. = 918.908

CITY OF RIVERSIDE WATER DEPARTMENT

APPROVED BY: *[Signature]* DATE: 4/14/03



ALBERT A. WEBB CIVIL ENGINEERS

3788 McCRAY ST.
 RIVERSIDE, CA. 92506
 PH: (909) 686-1070
 FAX: (909) 788-1256

APPROVED BY: *[Signature]* DATE: 4-7-03

R.C.E. NO. C44762

MARK	REVISIONS	APPR.	DATE

CITY OF RIVERSIDE, CALIFORNIA PUBLIC WORKS DEPARTMENT

APPROVED BY	BY DATE	APPROVED BY
PRINCIPAL ENGINEER	<i>[Signature]</i>	<i>[Signature]</i>
PARK DEPARTMENT		
TRAFFIC DIVISION		

DATE: 5/1/03

SEWER IMPROVEMENT PLANS FOR PARCEL MAP No. 30485-1

ONSITE PUBLIC SEWER FROM PALMYRITA AVE. TO STA. 1XXX

SCALE: HORIZ. 1"=40' . VERT. 1"=4'

ACCOUNT NO.

DRAWING NUMBER **S-1784**

SHEET **4** OF **4**

010061UT.PRO

INDEXED 5-15-03 4th

6:200110-0061.Dwg\$Pics\01061UT.dwg Mar 20, 2003 11:14:35AM