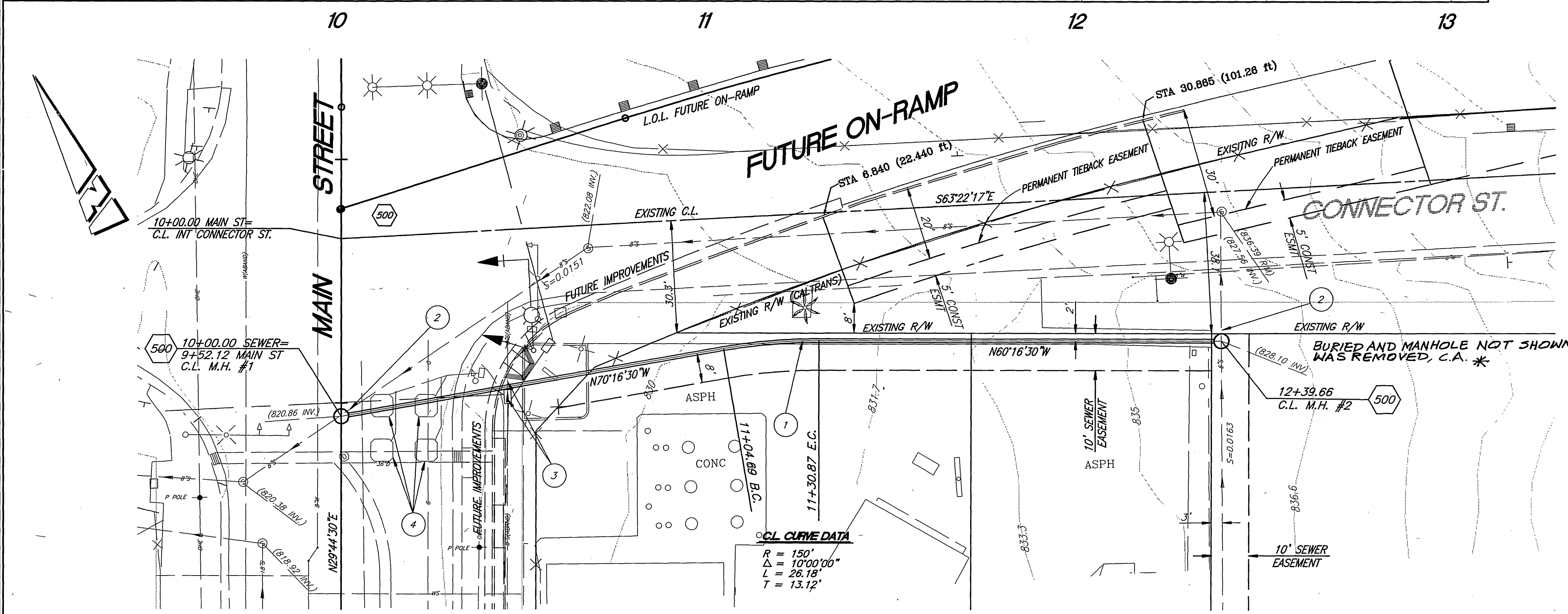


PROJECT LOCATION MAP
SCALE: 1"=500'



GENERAL CONSTRUCTION NOTES

- 1 CONSTRUCTION SHALL BE IN ACCORDANCE WITH THE CITY OF RIVERSIDE STANDARD DRAWINGS AND STANDARD SPECIFICATIONS FOR PUBLIC WORKS CONSTRUCTION, 2003 EDITION.
- 2 EXISTING UTILITIES SHOWN ON THIS PLAN ARE PLOTTED FROM UTILITY RECORDS. THE CONTRACTOR IS REQUIRED TO TAKE DUE PRECAUTIONARY MEASURES TO LOCATE AND PROTECT ALL UTILITIES WHETHER OR NOT SHOWN ON THIS PLAN. IF THE COVER OF A UTILITY IS KNOWN, IT IS SHOWN IN THE PROFILE. UTILITIES SHOWN IN THE PROFILE AS UNKNOWN, BUT THE UTILITY IS NOT EXPECTED TO CONFLICT WITH THE PROPOSED IMPROVEMENTS.
- 3 CONTRACTOR SHALL POTHOLE AND VERIFY ALL LOCATIONS AND ELEVATIONS OF UTILITIES PRIOR TO START OF CONSTRUCTION TO ELIMINATE INTERFERENCE WITH NEW CONSTRUCTION.
- 4 PRIME CONTRACTORS BIDDING THIS WORK SHALL HAVE A CLASS "A, C-34 OR C-42" LICENSE.
- 5 ALL ELEVATIONS SHOWN ON THE PLANS SHALL BE STAKED IN THE FIELD.
- 6 BACKFILLING OF TRENCH AND PAVEMENT REPLACEMENT SHALL BE DONE PER CITY OF RIVERSIDE STANDARD DRAWING 45.3.

SPECIFIC CONSTRUCTION NOTES

- NUMBERS ABOVE 100 IN A HEXAGON ON THE PLAN REFER TO THE RESPECTIVE STANDARD DRAWING AND SHALL BE CONSTRUCTED ACCORDINGLY. UNLESS MODIFICATIONS ARE NOTED ON THE PLAN OR COVER SHEET. ANY NUMBER SHOWN BELOW THE STANDARD DRAWING NUMBER INDICATES THE SPECIFIC ALTERNATE TO BE CONSTRUCTED.
- 1 INSTALL 8" V.C.P. SEWER WITH CASE 1 BEDDING PER STD DWG 452.
 - 2 EXISTING SEWER TO BE PLUGGED AND ABANDONED AFTER NEW SEWER IS COMPLETED.
 - 3 REMOVE INTERFERING PORTION OF EXISTING ABANDONED 8" V.C.P. AND PLUG ENDS OF REMAINING PIPE.
 - 4 REPLACE EXISTING TRAFFIC SIGNAL DETECTOR LOOPS AFTER CONSTRUCTION.



BENCHMARK:
17-G2
CALIF DIVISION OF HIGHWAYS BRASS DISK IN A MONUMENT WELL AT THE C.L. INTERSECTION OF OAKLEY AND MAIN STREET
ELEV. - 825.448

ENGINEER IN RESPONSIBLE CHARGE
Lauren F. Caldwell
LAUREN F. CALDWELL
R.C.E. No. 39441 expires 12/31/05
DATE 3/7/2003

DESIGNED BY: Curt
DRAWN BY: Curt
CHECKED BY: [Signature]

CITY OF RIVERSIDE, CALIFORNIA
PUBLIC WORKS DEPARTMENT

APPROVED BY	BY	DATE	APPROVED BY
PRINCIPAL ENGINEER	[Signature]	3/7/03	CITY ENGINEER
STREET SERVICES SUPERVISOR	[Signature]		
TRAFFIC DIVISION			
PARKS DEPARTMENT			

* AS-BUILT 9-24-03 Lfh

CONNECTOR STREET SEWER RELOCATION
MAIN ST TO 250' ELY
ON-RAMP RECONSTRUCTION.

HORIZ. SCALE: 1" = 20' VERT. SCALE: 1" = 2'

ACCT. NO. 9760923203-440301
S-1785
SHEET 1 OF 1