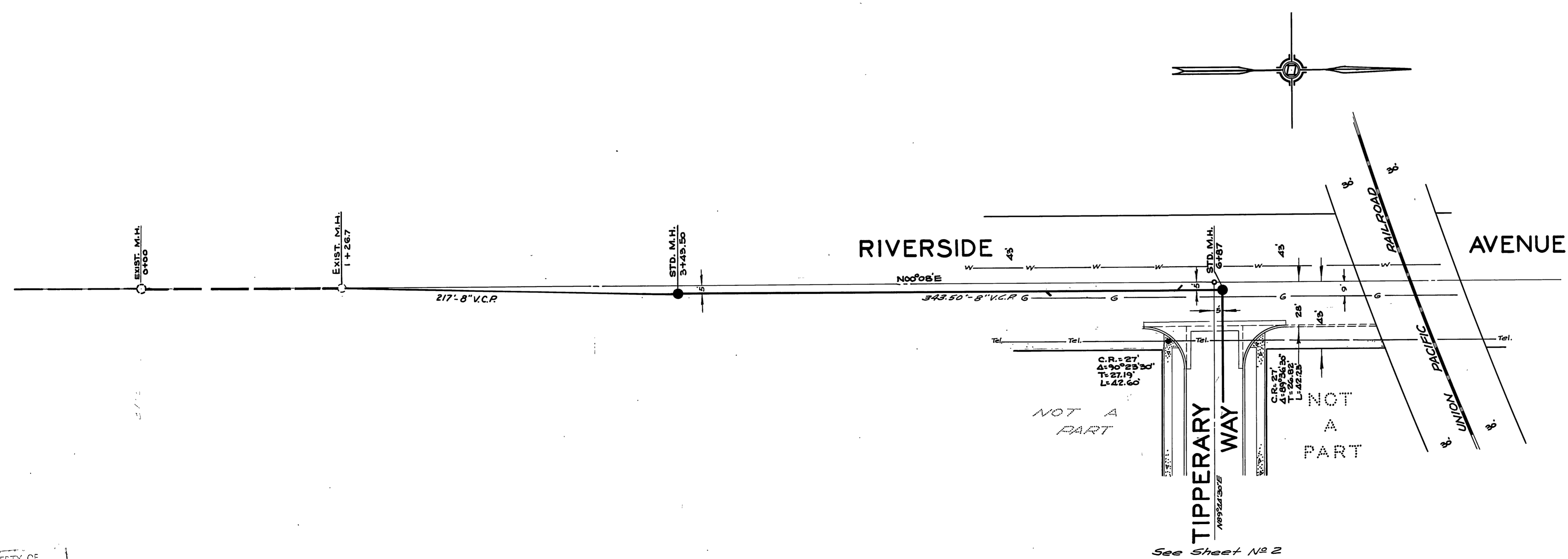


**BENCH MARK**  
City B.M. - Spike in lead, Middle of Curb Return, 100± South of  
E. SUNNYSIDE DRIVE. Elev. 842.87'



REVISIONS		
MARK	DATE	DESCRIPTION
①	12-5-56	Revise Sewer Grade between Sta. 1+26.7 & 3+43.50

DESIGNED BY: J.F. DAVIDSON, C.E.  
DRAWN BY: J.F. DAVIDSON, C.E.  
APPROVED BY: *[Signature]*  
DIRECTOR OF PUBLIC WORKS

J.F. DAVIDSON - CIVIL ENGINEER  
R.E. No 862  
RIVERSIDE, CALIFORNIA  
APPROVED BY: *[Signature]* DATE 10-8-56

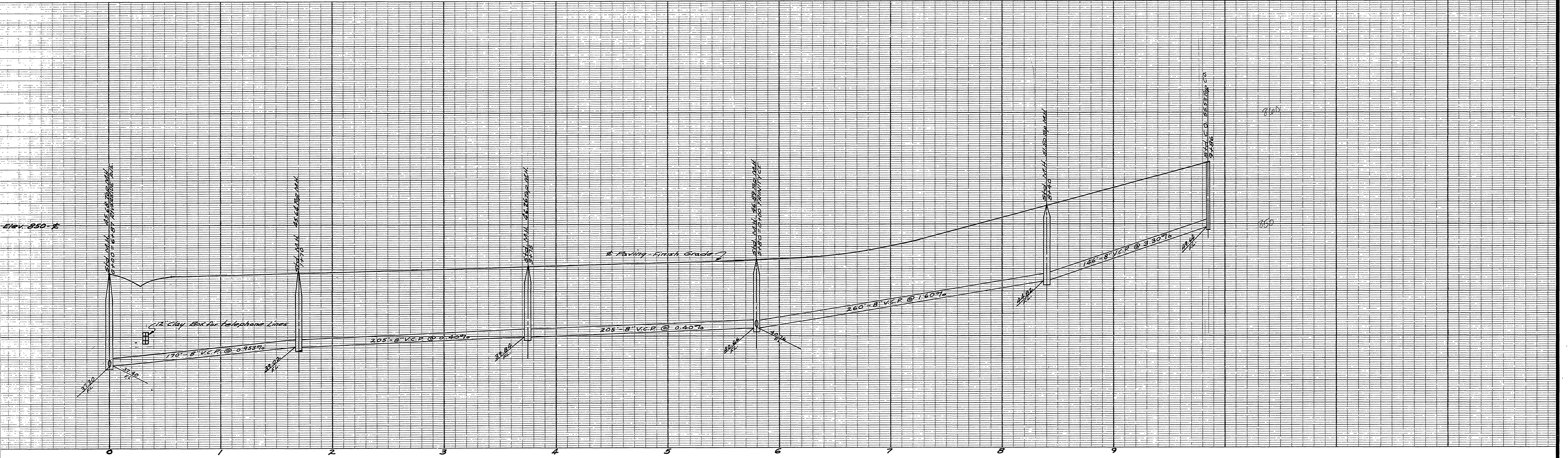
CITY OF RIVERSIDE, CALIFORNIA  
DEPARTMENT OF PUBLIC WORKS

**SEWER PLAN & PROFILE**  
**RIVERSIDE AVE**

**HARMONY DALE NO. 3**  
HORIZ. SCALE 1"=40' VERT. SCALE 1"=4'

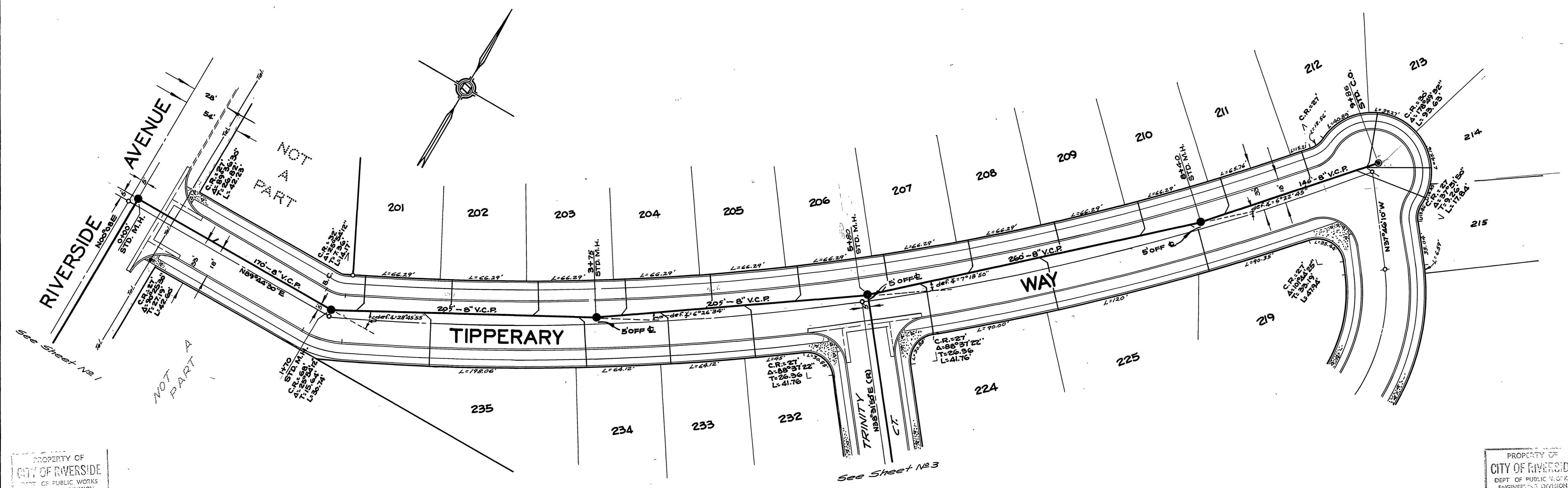
APPROVED BY: *[Signature]*  
Director of Public Works  
DATE Nov 28, 1956

NO. **S-18**  
SHEET 1 OF 3



NOTE -  
Sewer Laterals to be Located  
in the Field.

— BENCH MARK —  
City B.M. - Spike in lead Middle of Curb Return 100' South of  
E. SUNNYSIDE DRIVE Elev. 842.82'



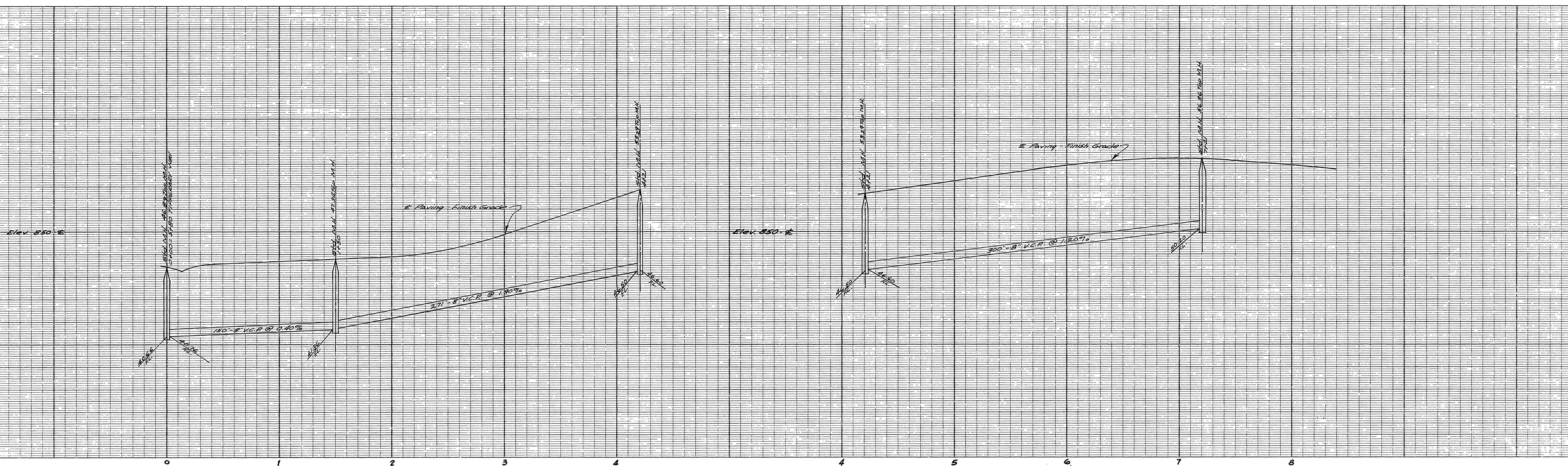
J.F. DAVIDSON - CIVIL ENGINEER  
R.E. No 862  
RIVERSIDE, CALIFORNIA  
APPROVED BY *[Signature]* DATE 10-8-58

CITY OF RIVERSIDE, CALIFORNIA  
DEPARTMENT OF PUBLIC WORKS

SEWER PLAN & PROFILE  
TIPPERARY WAY

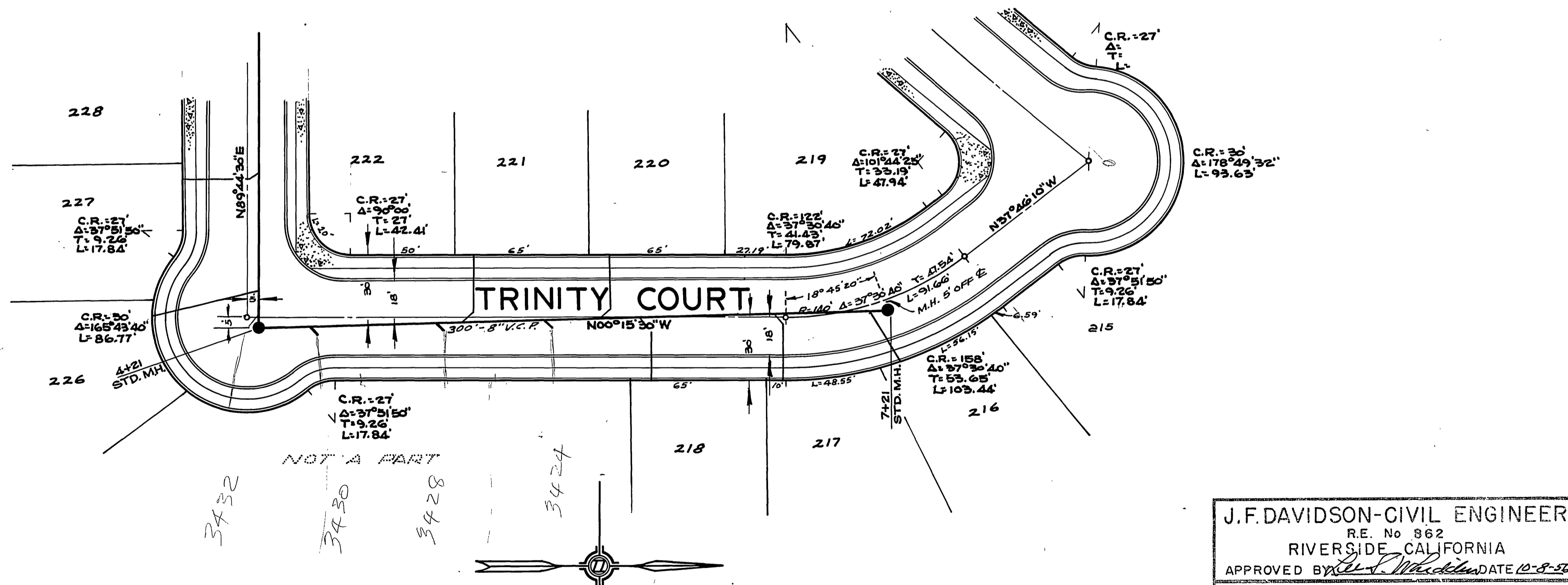
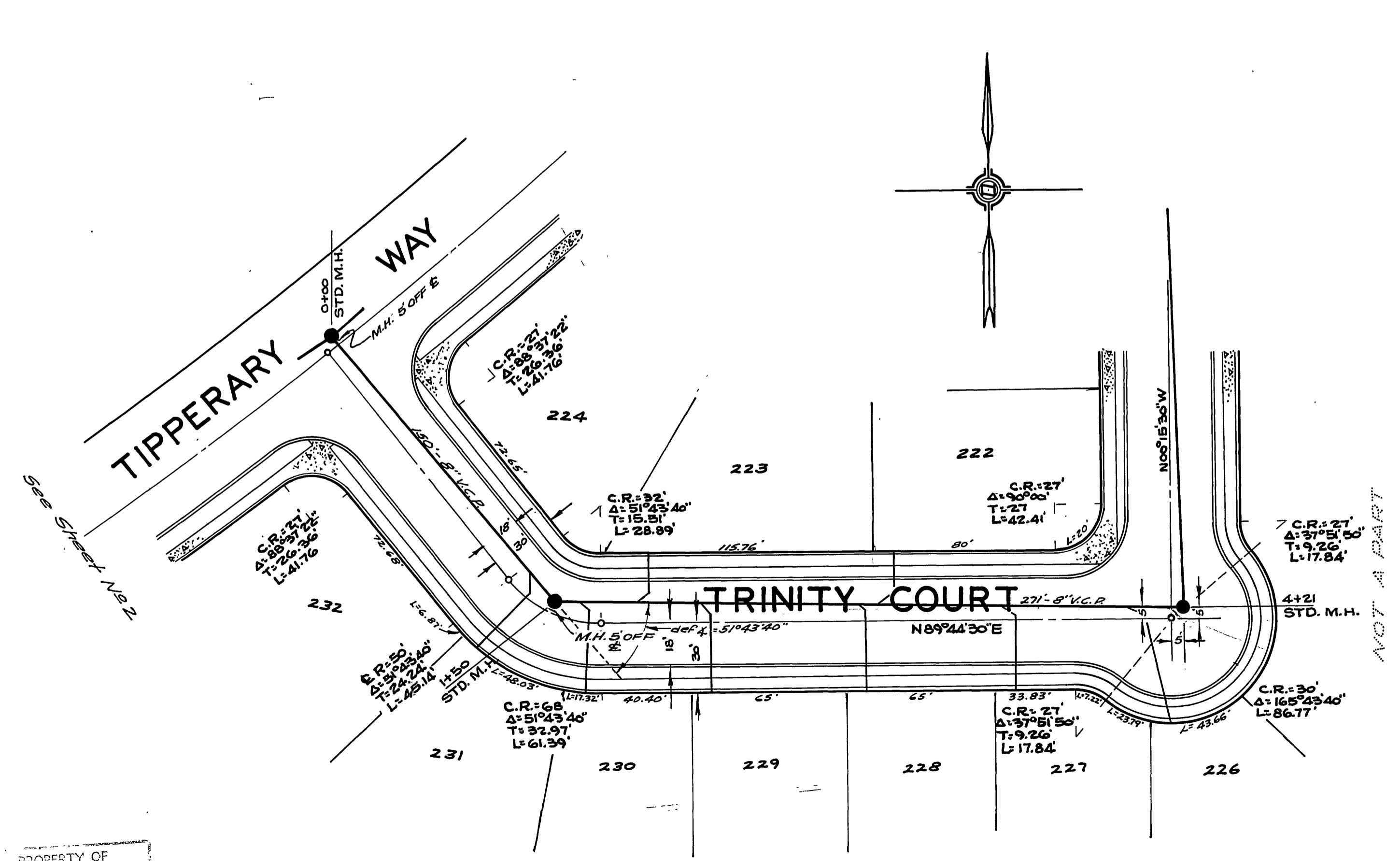
HARMONY DALE NO. 3  
HORIZ. SCALE 1"=40' VERT. SCALE 1"=4'

APPROVED BY *[Signature]*  
Director of Public Works  
DATE Nov 28, 1962  
NO. S-18  
SHEET 2 OF 3



NOTE -  
Sewer Laterals to be located  
in the field.

- BENCH MARK -  
City B.M. - Spike in lead Middle of Curb Return 100'  
South of E. SUNNYSIDE DRIVE. Elev. 842.82'



J.F. DAVIDSON - CIVIL ENGINEER  
R.E. No. 862  
RIVERSIDE, CALIFORNIA  
APPROVED BY *J. Davidson* DATE 10-8-57

CITY OF RIVERSIDE, CALIFORNIA  
DEPARTMENT OF PUBLIC WORKS

SEWER PLAN & PROFILE  
TRINITY COURT

HARMONY DALE NO. 3  
HORIZ. SCALE 1"=40' VERT. SCALE 1"=4'

APPROVED BY *J. Davidson*  
Director of Public Works  
DATE Nov 28, 1956  
NO. S-18  
SHEET 3 OF 3