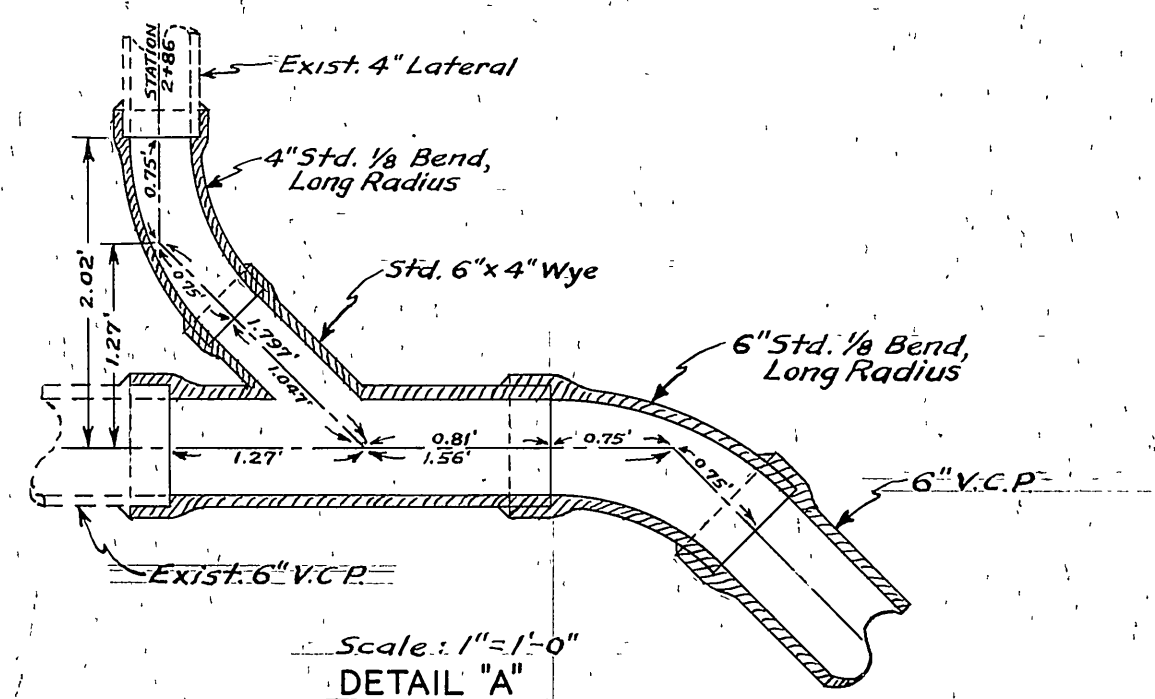
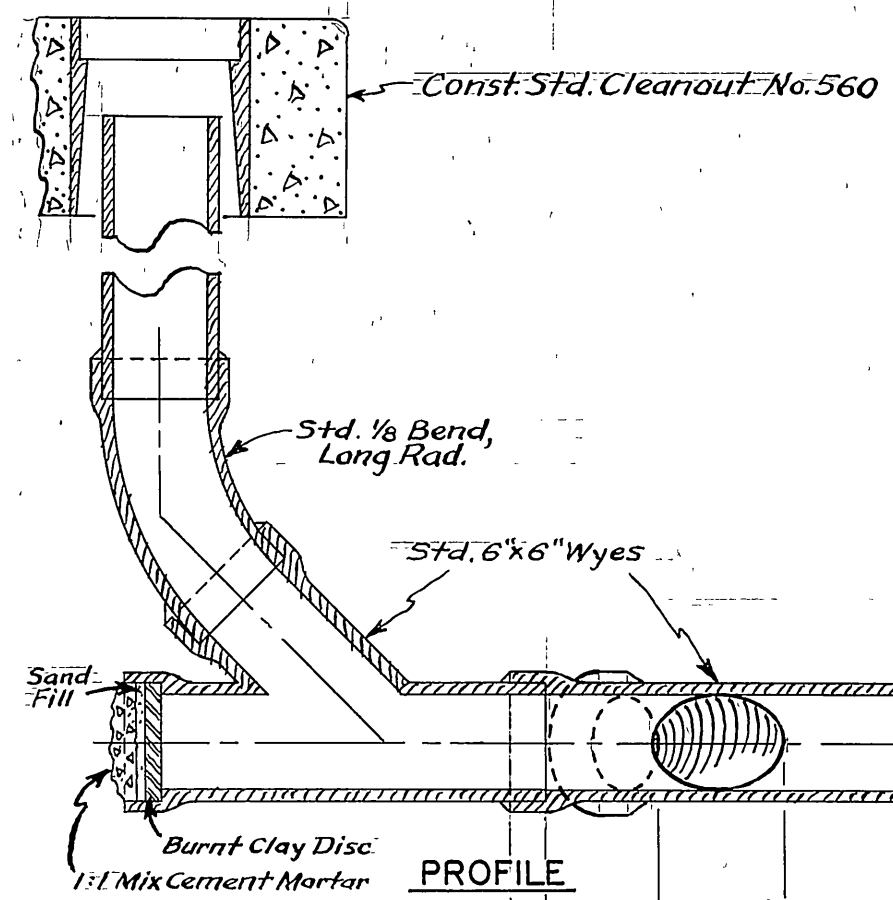


REFERENCE: REC'D BK. 2/101
M.B. 1/14



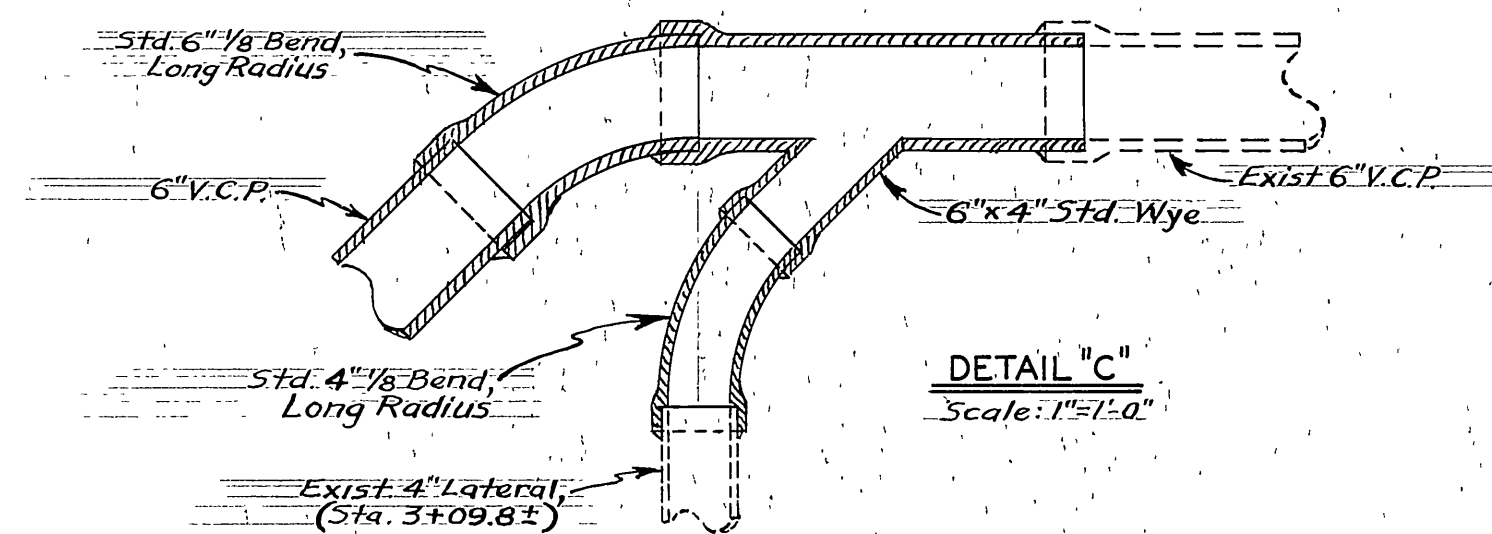
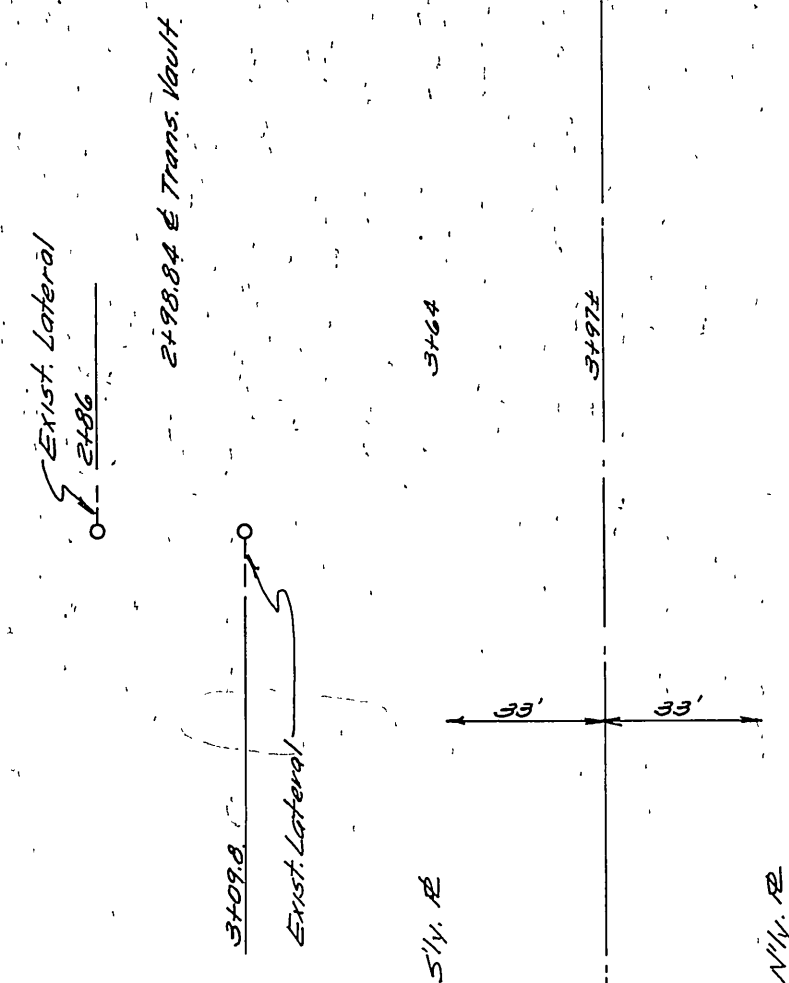
Scale: 1"=1'-0"
DETAIL "A"



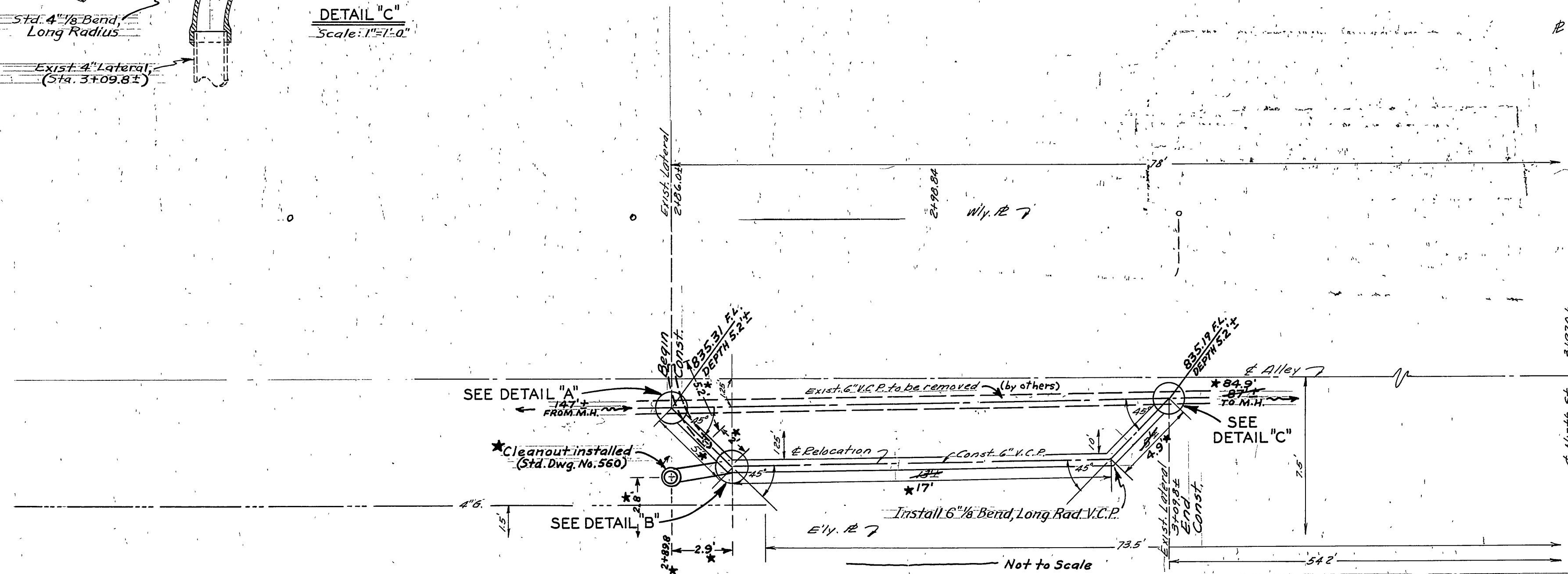
PROFILE

PLAN

KEY MAP
Scale: 1"=40'



Scale: 1"=1'-0"
DETAIL "C"



- Note:
1. It shall be the responsibility of the contractor to clear the right of way in accordance with the provisions of law as it affects each utility including irrigation lines & appurtenances & at no cost to the city.
 2. Contractor will be responsible for locating & avoiding any utilities not shown on plan.
 3. Sewer slope to be determined in field.
 4. This plan covers sewer construction only.

★ 10-5-59 "As Built" (See F.B. 652/14)
H.B.

SEWER RELOCATION
IN ALLEY
SOUTH OF NINTH ST.
AND EAST OF MAIN ST.

B
C.A. H. Bull

wedg

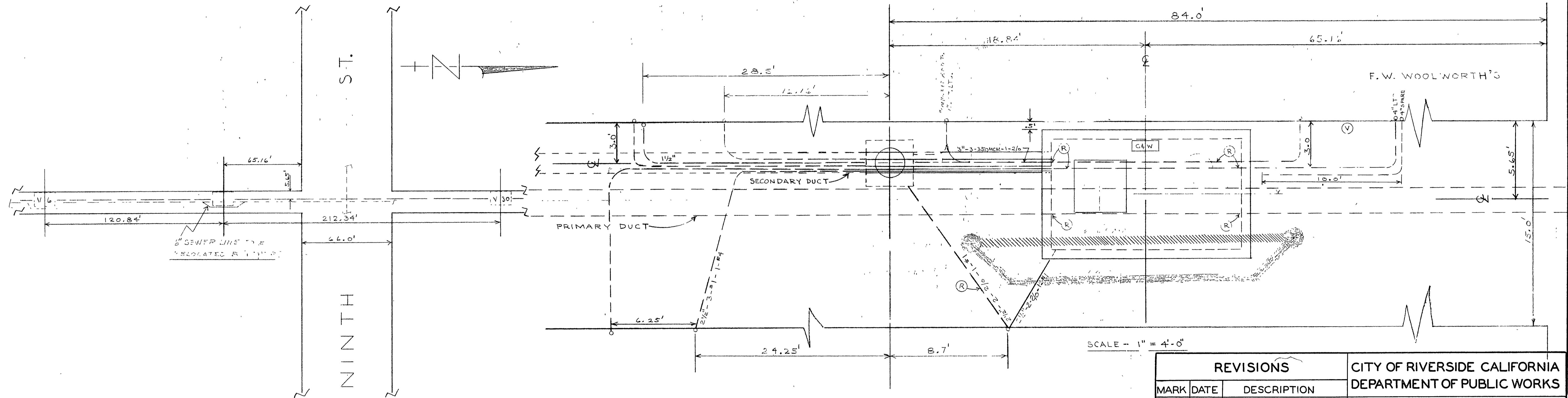
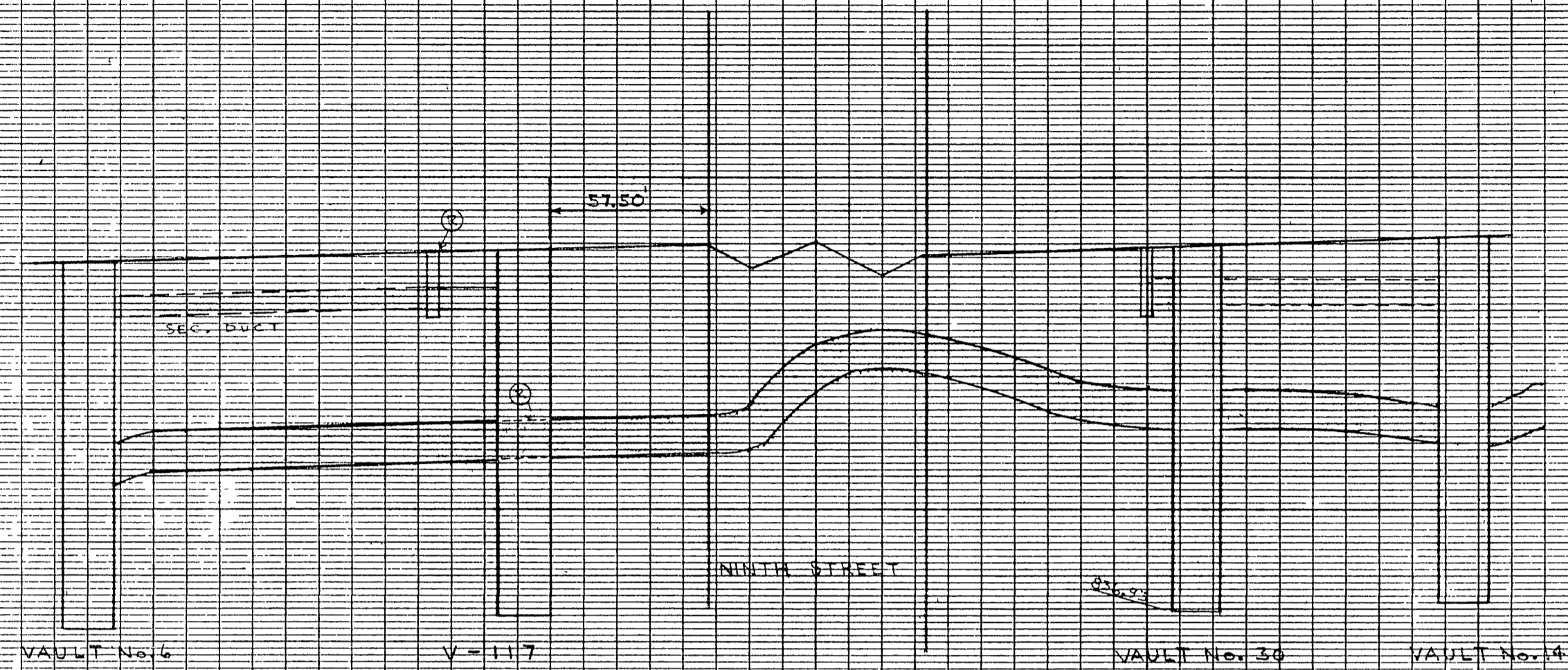
Francis J. Kopfer

J. Martindale
July 16, 1959

5-182

85.0

84.0



REVISIONS		CITY OF RIVERSIDE CALIFORNIA DEPARTMENT OF PUBLIC WORKS	
MARK	DATE	DESCRIPTION	
DESIGNED BY	CHECKED BY	APPROVED BY	S 102
DRAWN BY		DIRECTOR OF PUBLIC WORKS	
RECOMMENDED BY	ASSISTANT CITY ENGINEER	DATE	

SHEET OF