

NOTE:  
 It shall be the responsibility of the Contractor to clear the right of way in accordance with the provisions of the law as it affects each utility including irrigation lines and appurtenances and at no extra cost to the City.

General Note:  
 @ = Calculated (For Flow Line Elevations of exist. mains).

SCALE 1" = 50'

SEWER RELOCATIONS  
 FOR EAST-WEST FREEWAY  
 AT EIGHTH STREET

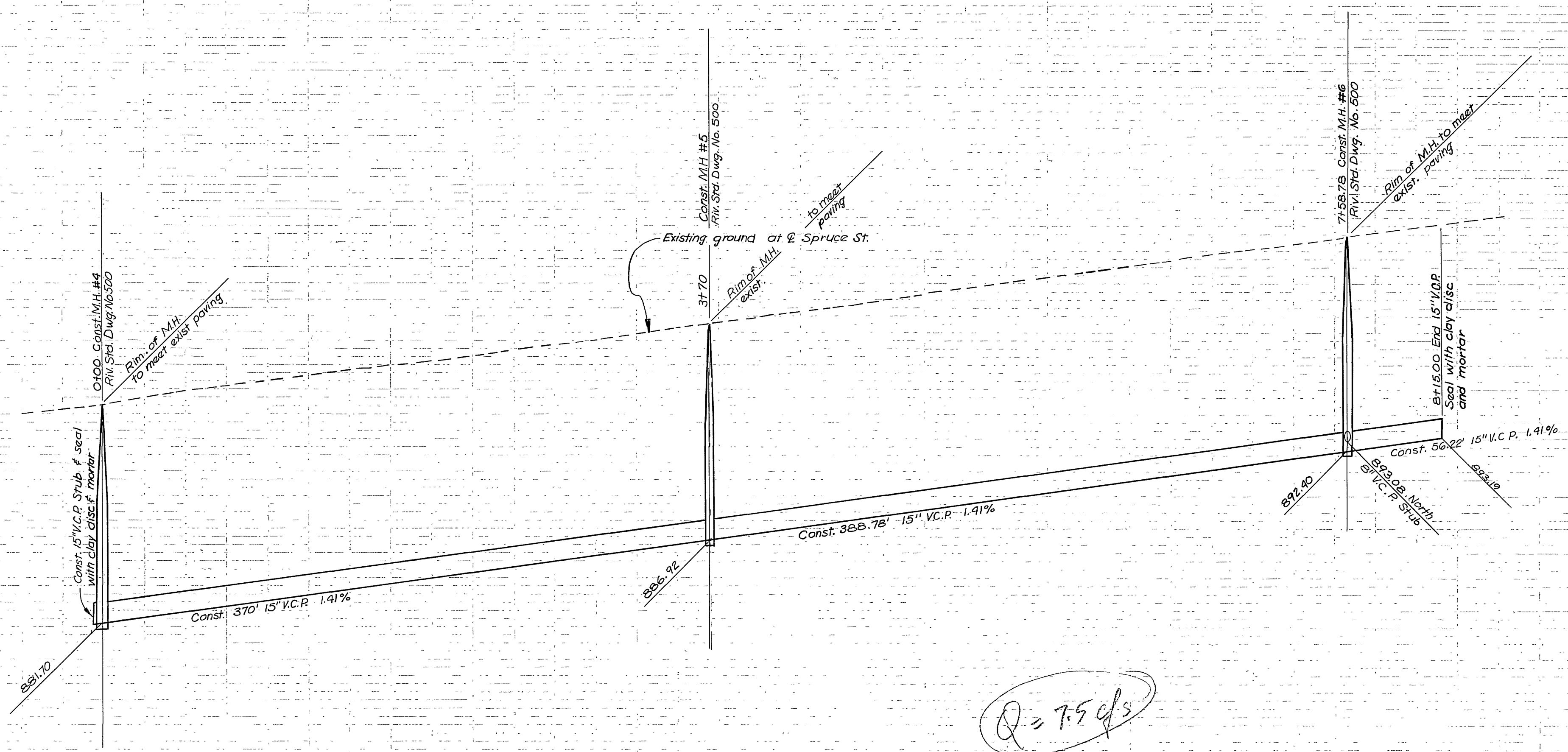
B.L. J. AM... J. MATHIAS  
 4-11-60  
 S-183

5.6 cfs

+2 10.52  
 38+10  
 4100.52

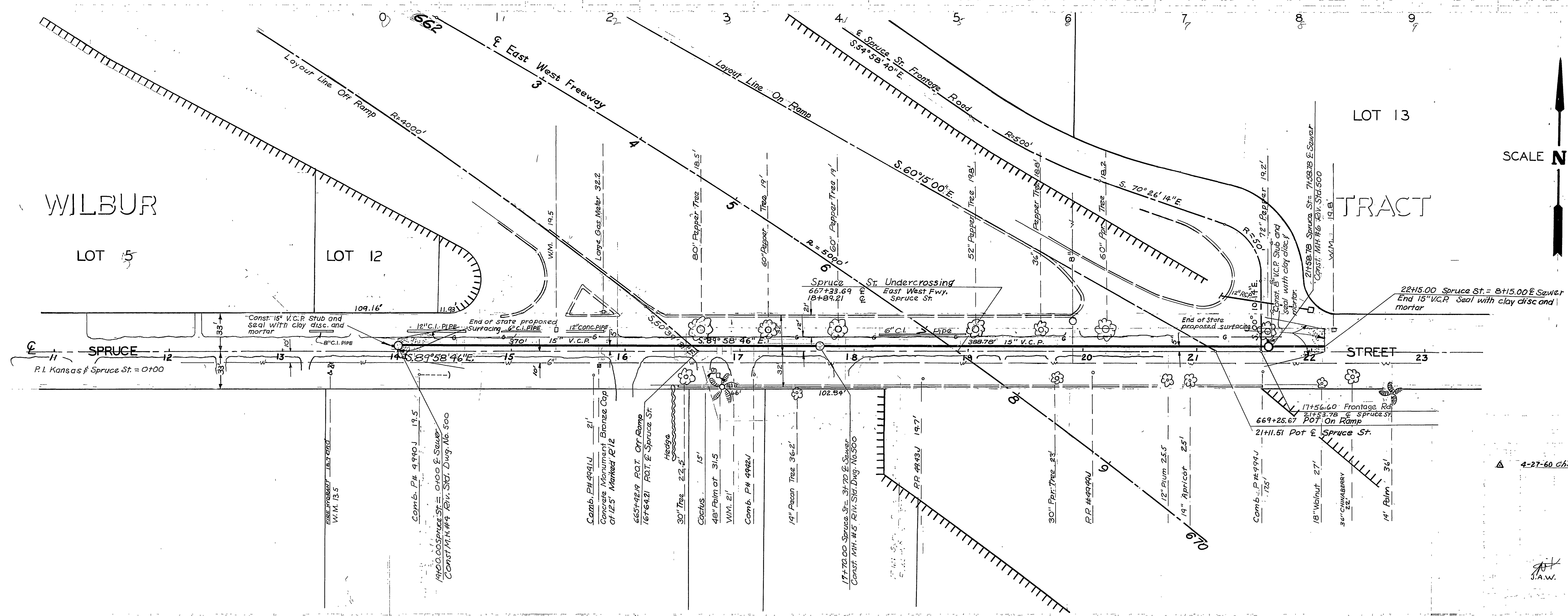
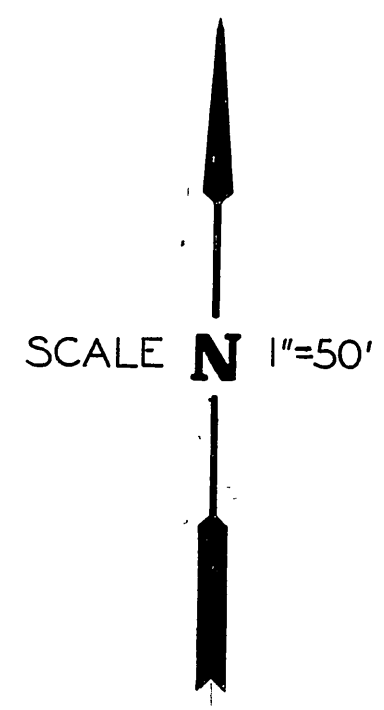
905  
900  
895  
890  
885  
880  
875

905  
900  
895  
890



B.M. WOODS R-12 BRASS DISC. SET IN TOP OF 4" LP FLUSH 185' RT. 664+80 & IMP. ELEV. 897.55 $\Delta$
B.M. STATE I-A-56 2x2" RWD. HUB & SP. HD. NAIL BURIED 15' 7" SLX. POWER POLE NO. J3L19 174' LT. 655+86 & IMP. ELEV. 881.01
FB. 249/4 R/I
SCALE: HOR. 1" = 50' VERT. 1" = 5'

NOTE: It shall be the responsibility of the Contractor to clear the right of way in accordance with the provisions of the law as it affects each utility including irrigation lines and appurtenances and at no extra cost to the City.

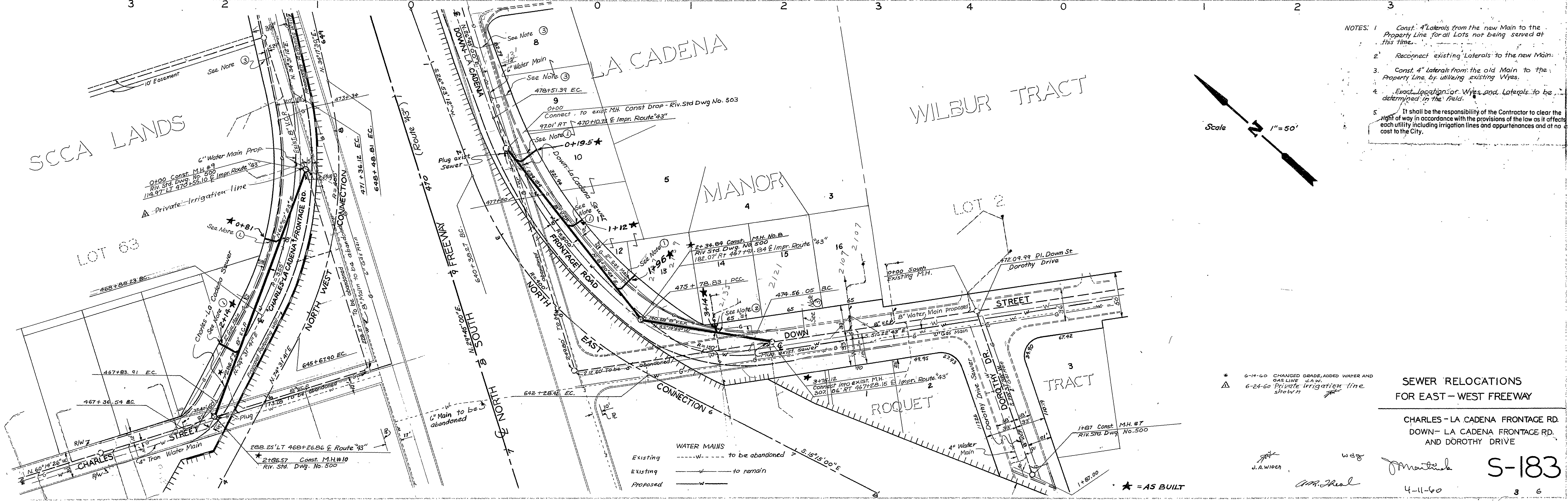
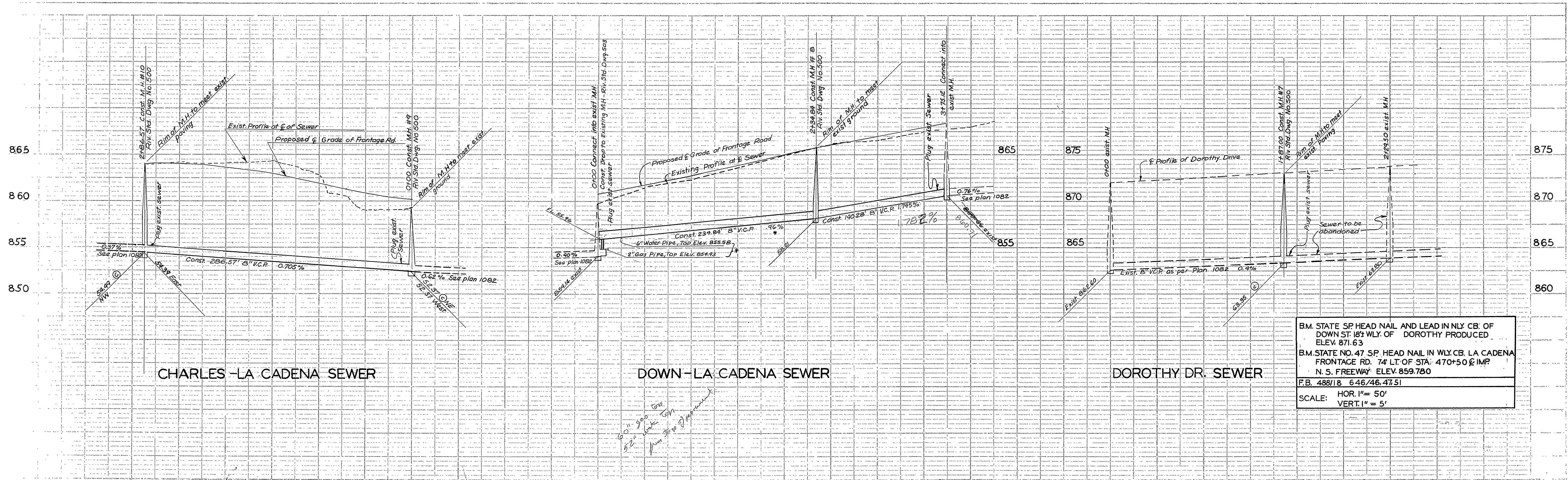


CITY OF RIVERSIDE  
DEPARTMENT OF PUBLIC WORKS  
SEWER RELOCATIONS  
FOR EAST-WEST FREEWAY

AT SPRUCE ST.

4-27-60 changed Bench Mark Elev.  
S.A.W.  
W.D.G.  
C.R. Schul

Amaturo  
4-11-60  
S-183  
2

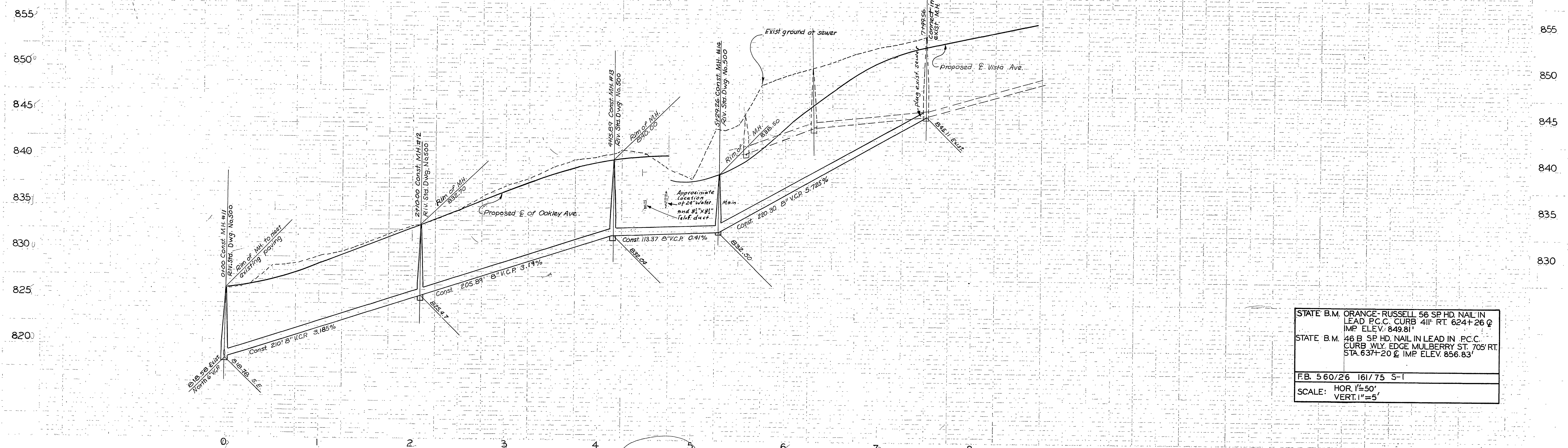


- NOTES:
1. Const. 4" laterals from the new Main to the Property Line for all Lots not being served at this time.
  2. Reconnect existing laterals to the new Main.
  3. Const. 4" laterals from the old Main to the Property Line by utilizing existing Wyes.
  4. Exact location of Wyes and laterals to be determined in the field.
  5. It shall be the responsibility of the Contractor to clear the right of way in accordance with the provisions of the law as it affects each utility including irrigation lines and appurtenances and at no extra cost to the City.

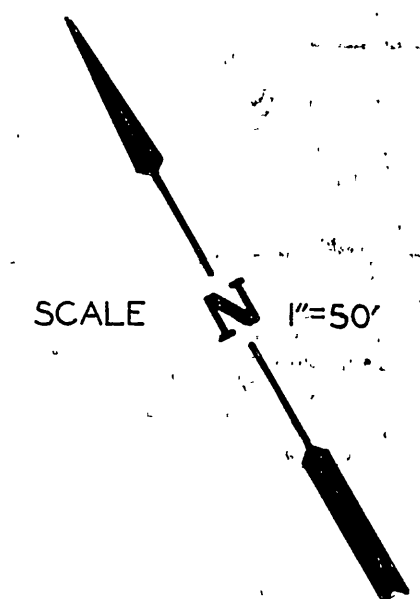
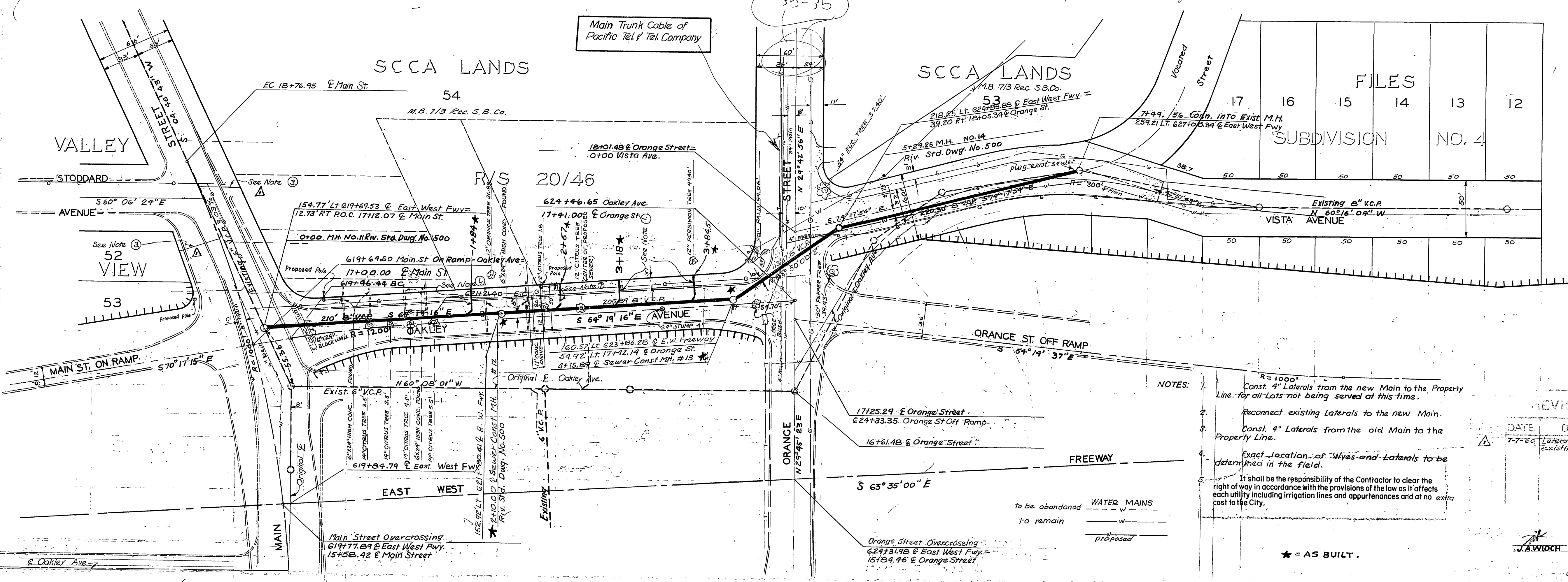
- \* 6-14-60 CHANGED GRADE, ADDED WATER AND GAS LINE U.A.W.
- △ 6-24-60 Private Irrigation line shown.

J.A. Wloch  
WJG  
J.M. Skelton  
4-11-60


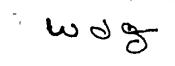
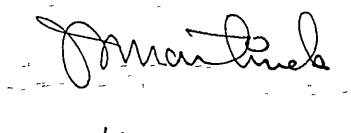
S-183  
3 6



STATE B.M. ORANGE-RUSSELL 56 SP HD NAIL IN LEAD P.C.C. CURB 4 1/4" RT. 624+26 @ IMP ELEV. 849.81'  
 STATE B.M. 46 B SP HD NAIL IN LEAD IN P.C.C. CURB WLY. EDGE MULBERRY ST. 705' RT. STA. 637+20 @ IMP ELEV. 856.83'  
 F.B. 560/26 161/75 S-1  
 SCALE: HOR. 1"=50'  
 VERT. 1"=5'



- NOTES:
- Const. 4" Laterals from the new Main to the Property Line for all Lots not being served at this time.
  - Reconnect existing Laterals to the new Main.
  - Const. 4" Laterals from the old Main to the Property Line.
  - Exact location of Wyes and Laterals to be determined in the field.
  - It shall be the responsibility of the Contractor to clear the right of way in accordance with the provisions of the law as it affects each utility including irrigation lines and appurtenances and at no extra cost to the City.

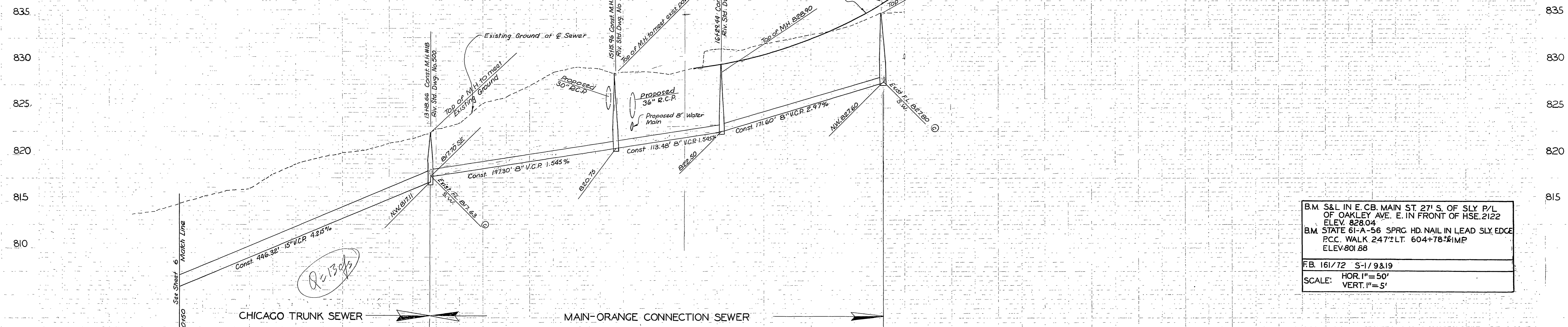
REVISION:		CITY OF RIVERSIDE CA FORM 1 DEPARTMENT OF PUBLIC WORKS
DATE	DESCRIPTION	
7-7-60	Laterals not built, due to existing sewer connections	SEWER RELOCATIONS FOR EAST-WEST FREEWAY  OAKLEY AVENUE VISTA AVENUE
  		
		S-183

\* = AS BUILT.

to be abandoned WATER MAINS  
 to remain w  
 proposed

Orange Street Overcrossing  
 624+31.95 @ East West Fwy. =  
 15124.46 @ Orange Street

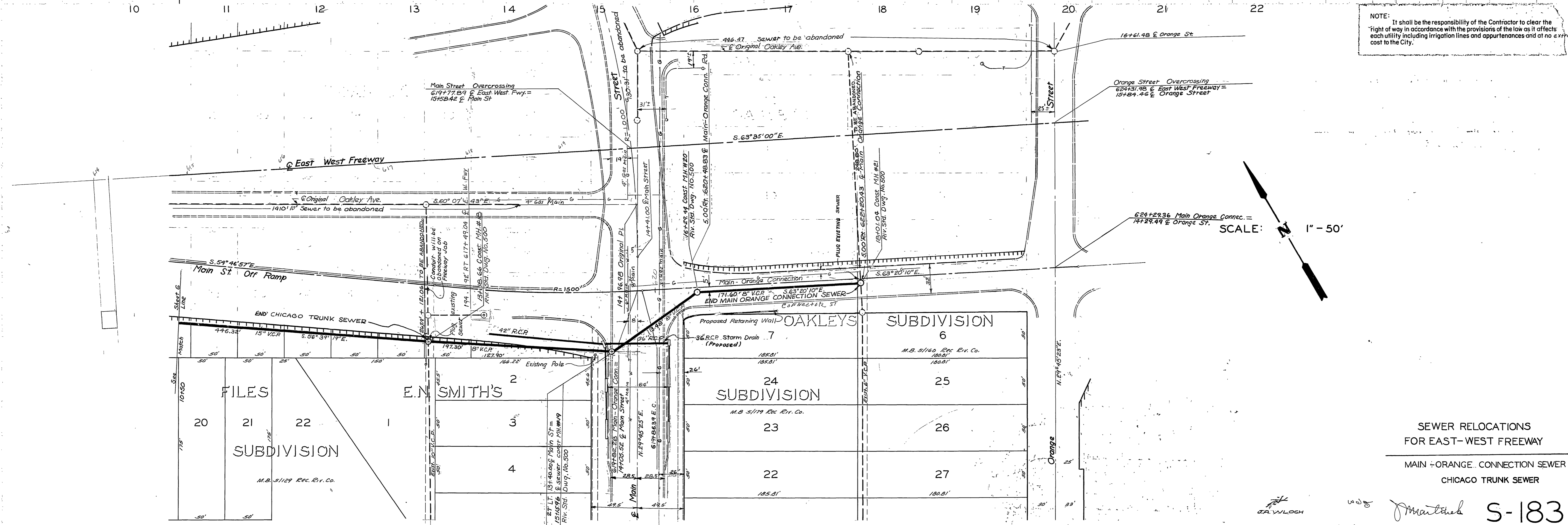
Main Street Overcrossing  
 619+77.89 @ East West Fwy.  
 15458.42 @ Main Street



B.M. S&L IN E. CB. MAIN ST. 27' S. OF SLY P/L OF OAKLEY AVE. E. IN FRONT OF HSE. 2122  
 ELEV. 828.04  
 B.M. STATE 61-A-56 SPRG. HD. NAIL IN LEAD SLY. EDGE P.C.C. WALK 247'± LT. 604+78'± IMP  
 ELEV. 801.88

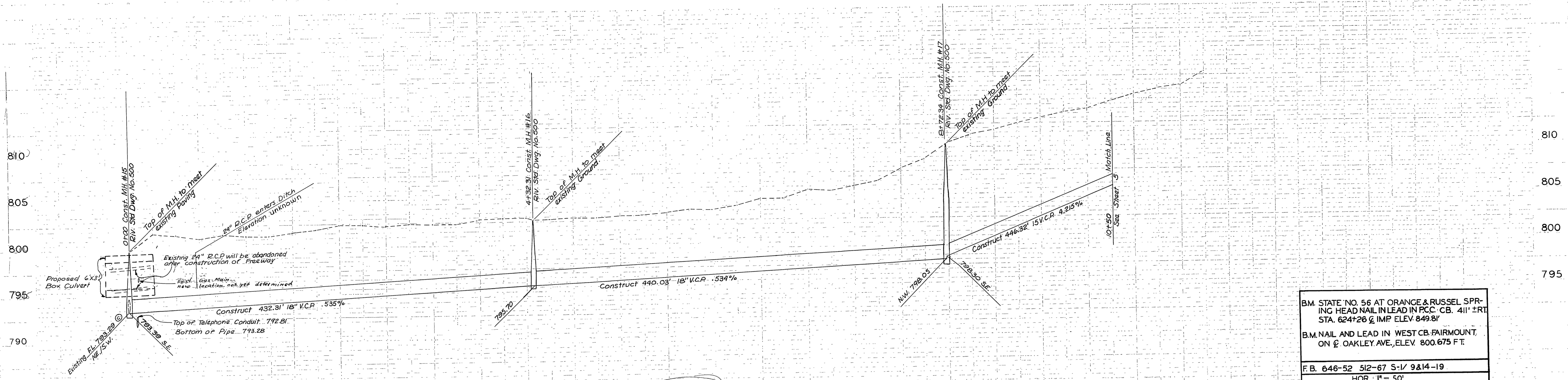
FB. 161/72 S-1/9&19  
 SCALE: HOR. 1"=50'  
 VERT. 1"=5'

NOTE: It shall be the responsibility of the Contractor to clear the right of way in accordance with the provisions of the law as it affects each utility including irrigation lines and appurtenances and at no extra cost to the City.



SEWER RELOCATIONS  
 FOR EAST-WEST FREEWAY  
 MAIN-ORANGE CONNECTION SEWER  
 CHICAGO TRUNK SEWER

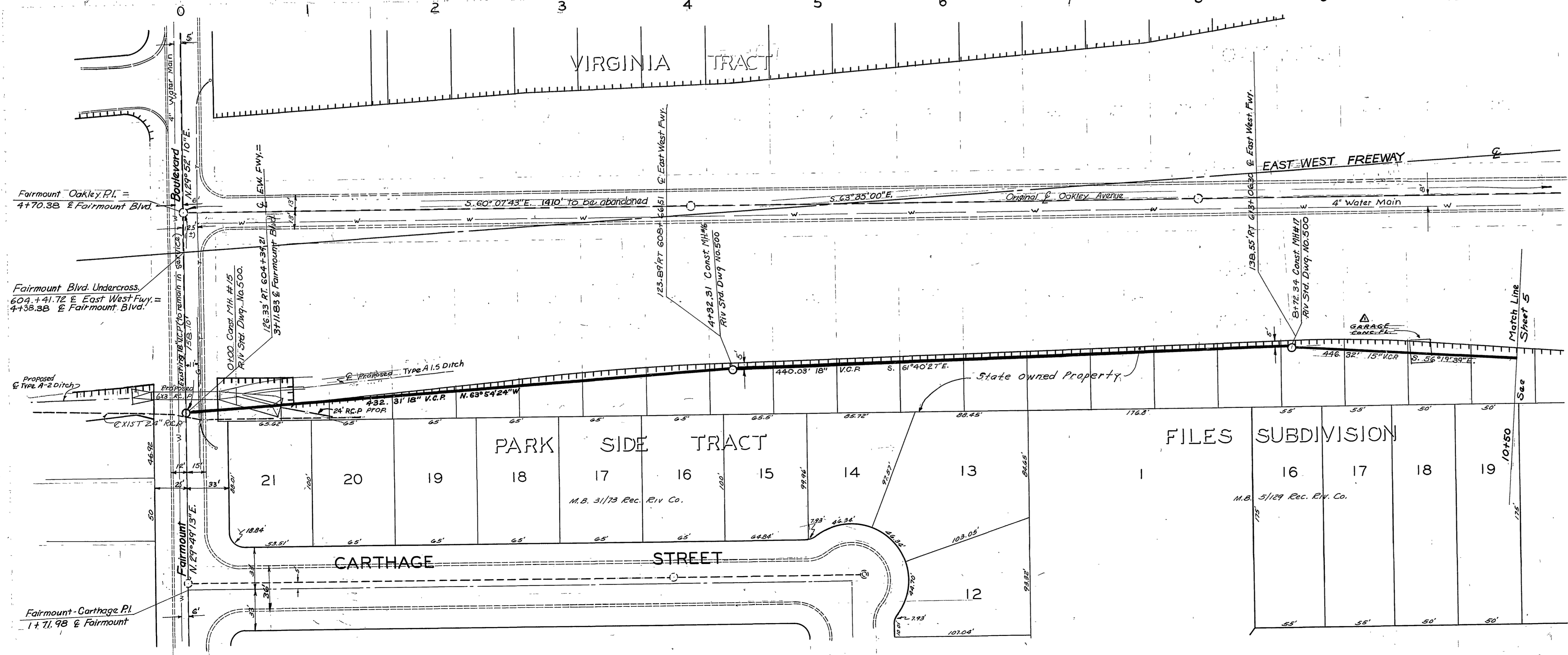
S-183  
 4-1-60



B.M. STATE NO. 56 AT ORANGE & RUSSEL SPRING HEAD NAIL IN LEAD IN P.C.C. CB. 411' ± RT. STA. 624+26 @ IMP. ELEV. 849.81'  
 B.M. NAIL AND LEAD IN WEST CB. FAIRMOUNT, ON @ OAKLEY AVE., ELEV. 800.675 FT.  
 F.B. 646-52 512-67 S-1/ 9&14-19  
 SCALE: HOR. 1" = 50'  
 VERT. 1" = 5'

CHICAGO TRUNK SEWER

*Q = 7.8 cfs*



NOTE: It shall be the responsibility of the Contractor to clear the right of way in accordance with the provisions of the law as it affects each utility including irrigation lines and appurtenances and at no extra cost to the City.

SCALE: 1" = 50'

▲ 4-28-60 GARAGE ADDED

SEWER RELOCATIONS FOR EAST-WEST FREEWAY

CHICAGO TRUNK SEWER

J.A. WLOCH  
 J.A. WLOCH  
 4-11-60  
 S-183  
 6 6