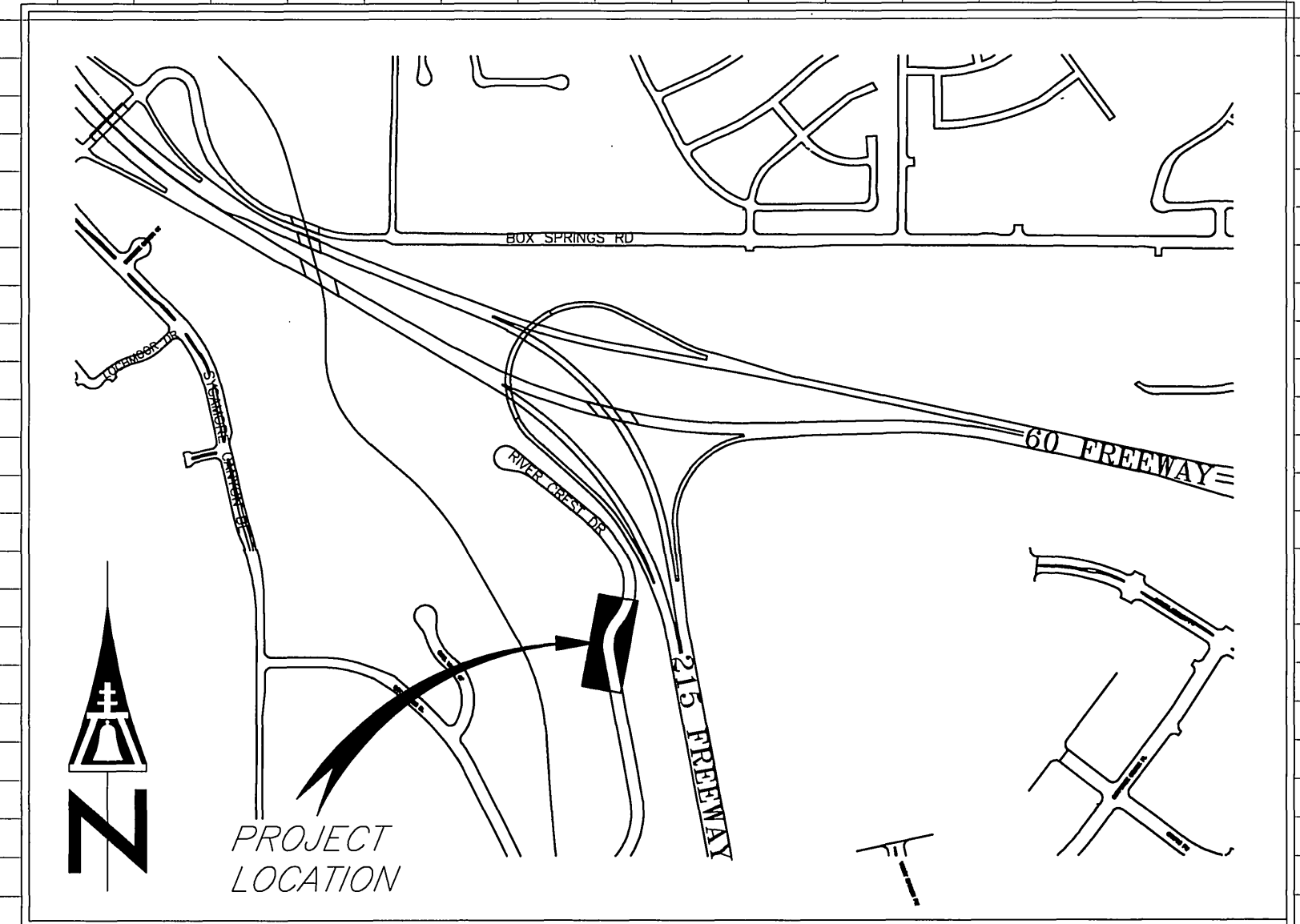


1552
1548
1544
1540
1536
1532
1528
1524
1520

1552
1548
1544
1540
1536
1532
1528
1524
1520

GENERAL NOTES

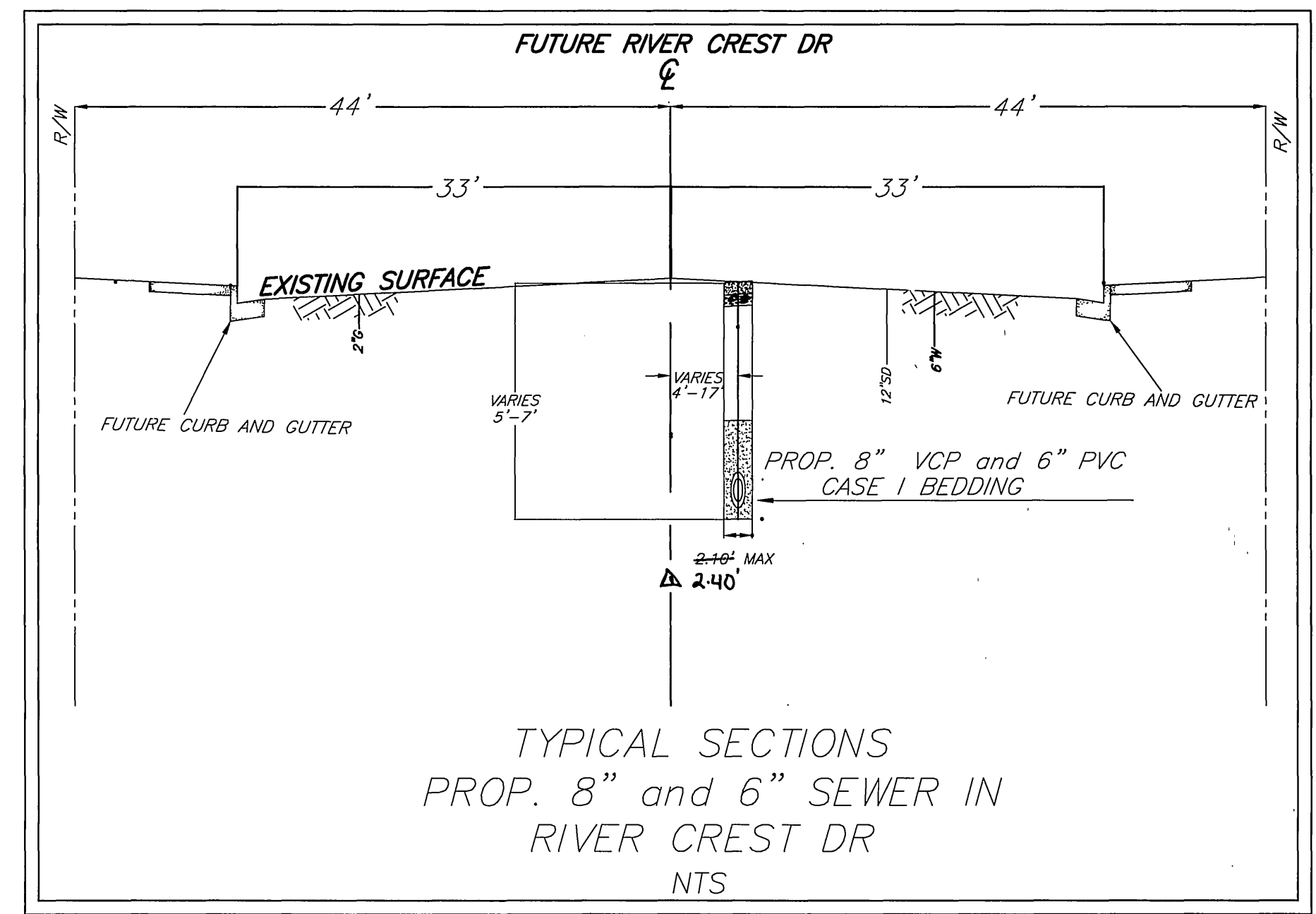
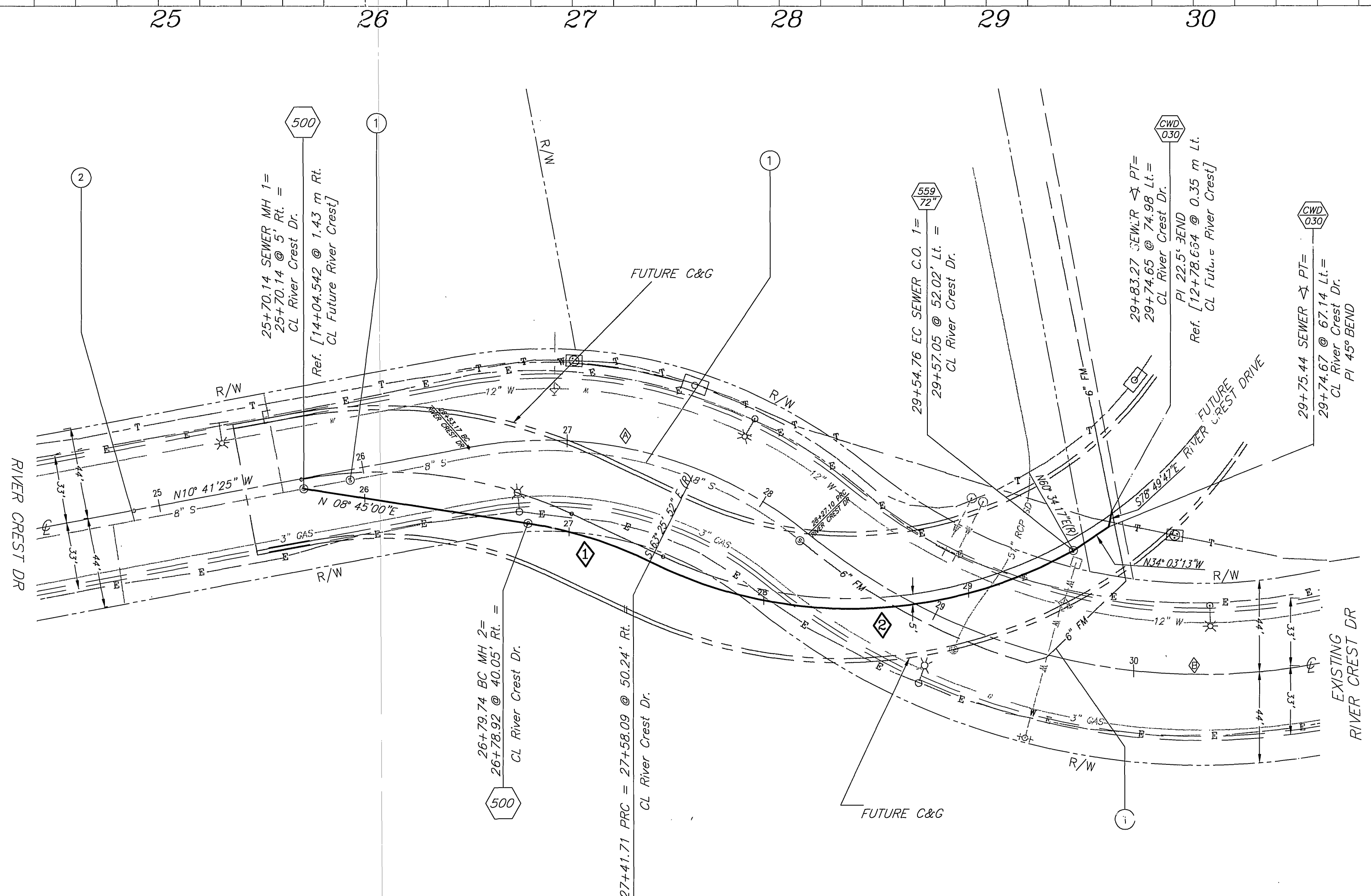
- 1) CONSTRUCTION SHALL BE IN ACCORDANCE WITH THE CITY OF RIVERSIDE STANDARD DRAWINGS AND STANDARD SPECIFICATIONS FOR PUBLIC WORKS CONSTRUCTION, 2003 EDITION.
- 2) EXISTING UTILITIES SHOWN ON THIS PLAN ARE PLOTTED FROM PUBLIC RECORDS. THE CONTRACTOR IS REQUIRED TO TAKE DUE PRECAUTIONARY MEASURES TO LOCATE AND PROTECT ALL UTILITIES WHETHER OR NOT SHOWN ON THIS PLAN.
- 3) CONTRACTOR SHALL POT-HOLE AND VERIFY ALL LOCATIONS AND ELEVATIONS OF UTILITIES PRIOR TO THE START OF CONSTRUCTION TO ELIMINATE INTERFERENCE WITH NEW CONSTRUCTION.
- 3) PRIME CONTRACTOR BIDDING THIS WORK SHALL HAVE A CLASS "A, C-34 OR C-42" LICENSE.
- 4) ALL ELEVATIONS SHOWN ON THIS PLAN SHALL BE STAKED IN THE FIELD.
- 5) BACKFILLING OF TRENCH AND PAVEMENT REPLACEMENT SHALL BE DONE PER CITY OF RIVERSIDE STANDARD DRAWING 453.
- 6) ALL NUMBERS IN BRACKETS ARE IN METERS UNLESS UNITS ARE SHOWN.



BENCHMARK
L1-B3 P.K. NAIL AND CITY ENGINEER TAG IN THE BASE OF A STREET LIGHT ALONG THE SOUTHERLY CURB OF RIVER CREST DRIVE, 70 FEET WESTERLY OF BOX SPRINGS BLVD.
ADJUSTED AND ENTERED: MAY 1997
ELEV- 1537.343

SPECIFIC CONSTRUCTION NOTES

- 1 ABANDON EXISTING SEWER IN PLACE
 - 2 EXISTING SEWER TO REMAIN IN SERVICE.
- NUMBERS ABOVE 100 IN A HEXAGON ON THE PLAN REFER TO THE RESPECTIVE STANDARD DRAWING AND SHALL BE CONSTRUCTED ACCORDINGLY, UNLESS MODIFICATIONS ARE NOTED ON THE PLAN OR COVER SHEET. ANY NUMBER SHOWN BELOW THE STANDARD DRAWING NUMBER INDICATES THE SPECIFIC ALTERNATE TO BE CONSTRUCTED.
- CWD 030** CONSTRUCT THRUST BLOCK PER CITY OF RIVERSIDE PUBLIC UTILITIES DEPARTMENT STANDARD DRAWING CWD-030.



SEWER RELOCATION IS NECESSARY DUE TO CALTRANS' PROJECT TO WIDEN THE I-215/RTE 60 FREEWAY.

STREET CURVE DATA

Δ = 50° 06' 41"	Δ = 39° 42' 05"
R = 200'	R = 300'
L = 174.93'	L = 207.88'
T = 93.50'	T = 108.31'

CURVE DATA

Δ	17° 45' 7"	55° 55' 50"
R	200'	218.25'
L	61.97'	213.05'
T	31.23'	115.87'

IMPORTANT NOTICE
Section 4218/4217 of the Government Code requires a Dig Alert Identification Number to be issued before a "Permit to Excavate" will be issued. For your Dig Alert ID, Number call CALL TOLL FREE 48 HOURS BEFORE YOU DIG UNDERGROUND SERVICE ALERT 1-800-227-2600

ENGINEER IN RESPONSIBLE CHARGE
LAUREN F. CALDWELL
R.C.E. No. 39441 expires 12/31/05
DATE 4/15/04

REVISIONS
REVISED TRENCH WIDTH
REVISED ACC. NO.
REVISED FORCE MAIN MATERIAL

CITY OF RIVERSIDE, CALIFORNIA
PUBLIC WORKS DEPARTMENT
APPROVED BY: [Signature]
DATE: 4/15/04

RIVER CREST DRIVE
SEWER RELOCATION
S-1831
ACC. No. 976623203-440301XX
SHEET 1 OF 1
HORIZ. SCALE: 1" = 40' VERT. SCALE: 1" = 4'

INDEXED 7-15-04 LHH