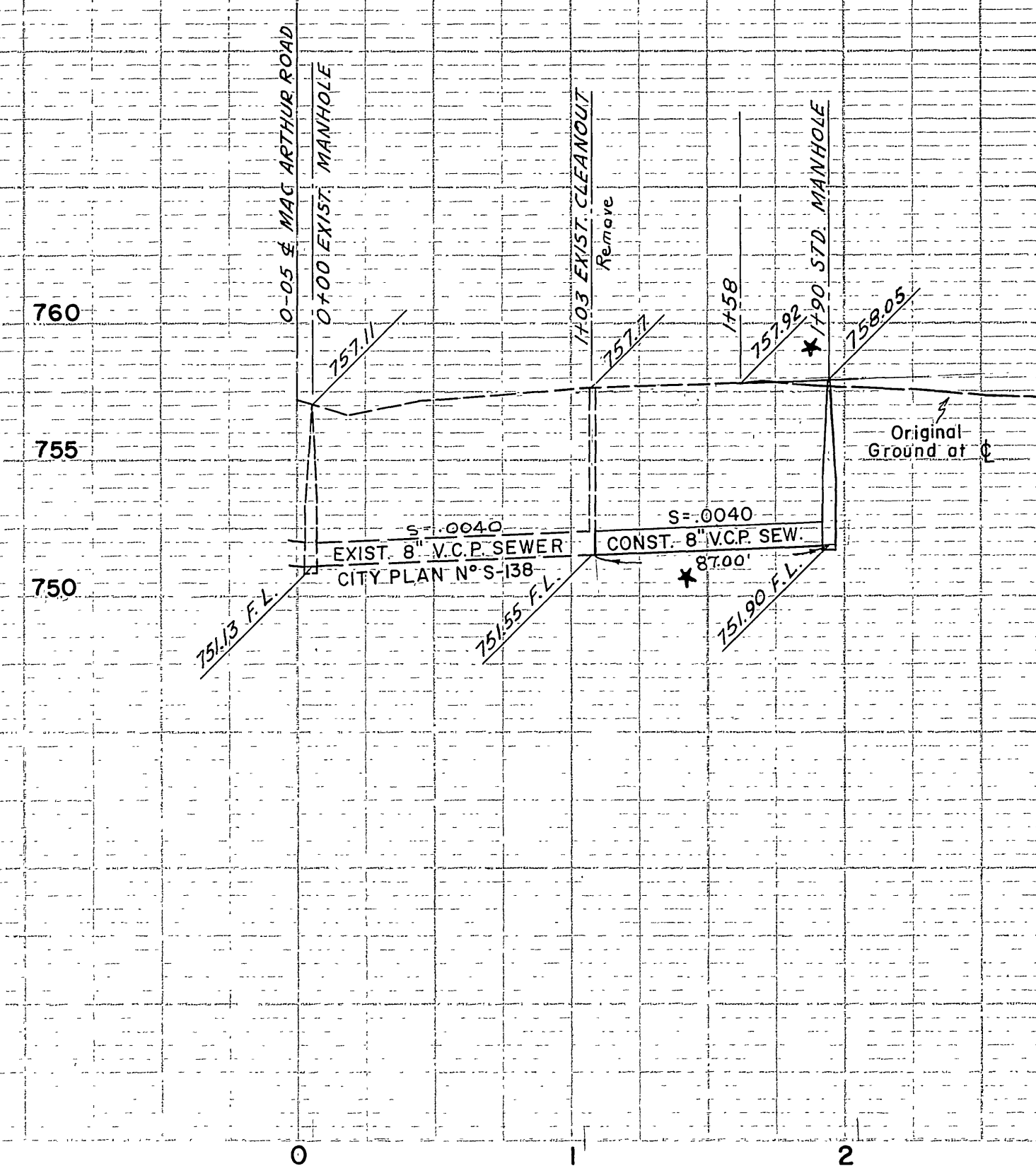
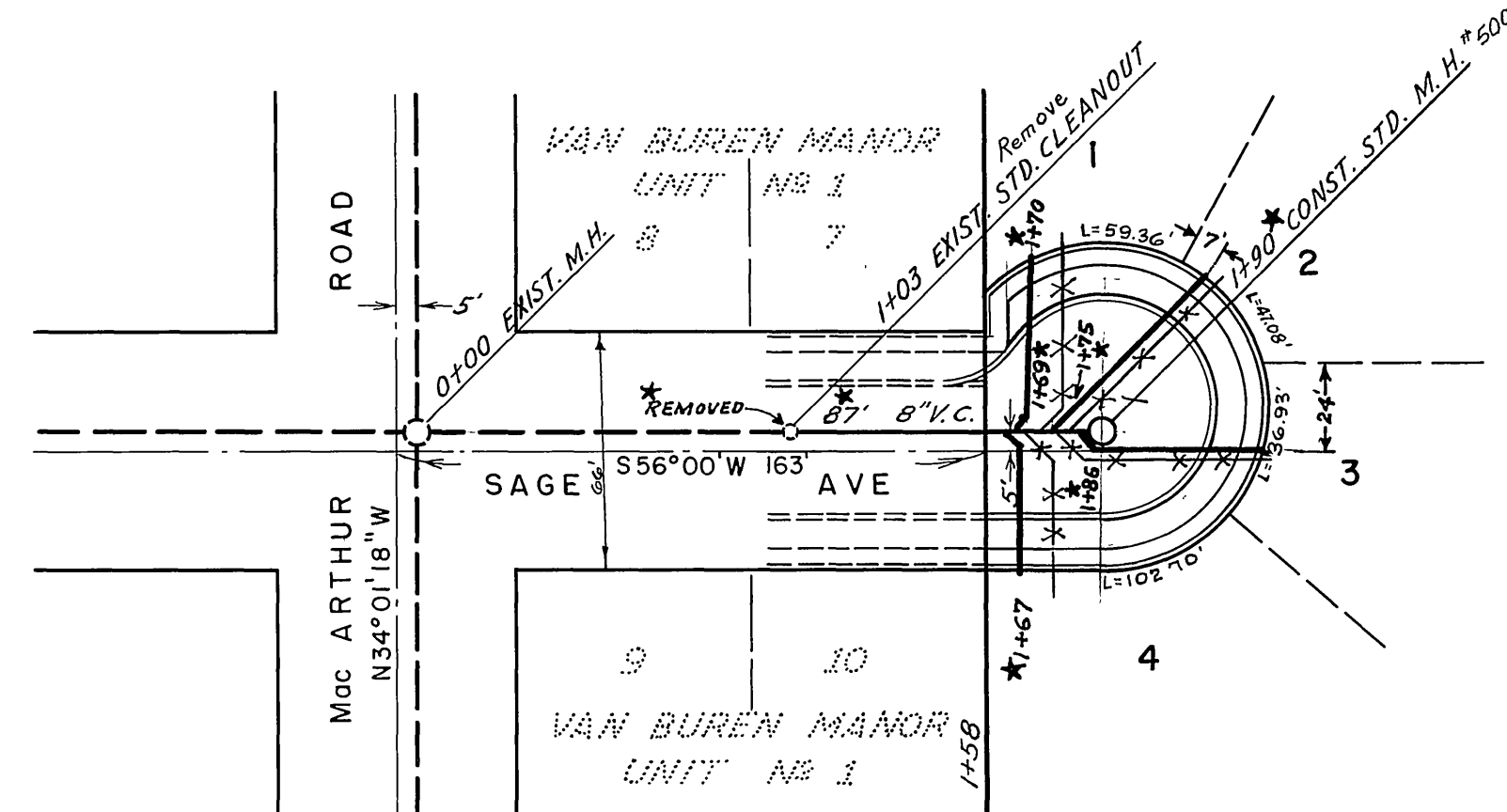


PROFILE SHEET
 NOTE: B.M. OR CROSS CHECKED
 B.M. IS NOTED
 STRUCTURE NOTING IS O.K.



B.M. = P.K. NAIL IN SOUTH CURB
 CALIFORNIA AVE. & KINGSBURY
 2' WEST OF CURB RETURN
 ELEV. = 750.82



NOTE:
 EXACT LOCATION OF THE HOUSE CONNECTIONS
 TO BE DETERMINED IN THE FIELD

RIVERSIDE ENGINEERING CO. INC.
 RIVERSIDE, CALIFORNIA
 APPROVED *George O. Hawley* c.e. 9655 DATE 5/29/59
CITY OF RIVERSIDE, CALIFORNIA
DEPARTMENT OF PUBLIC WORKS

SEWER PLAN & PROFILE
 SAGE AVE
 FLEMING RECORD OF SURVEY

HORIZ-1"=50' — VERT-1"=5'

ENGINEERS ESTIMATE OF QUANTITIES	
8" V.C.P.	87'
NUMBER STD. MANHOLES	1
NUMBER HOUSE CONNECTIONS	4

APPROVED
J. Martindale
 DIRECTOR OF PUBLIC WORKS
 Date June 23, 1959
 No. **S-185**
 Sheet 1 of 1

★ = "As Built," 8-5-59, H. Ball