

GENERAL NOTES

- IT SHALL BE THE RESPONSIBILITY OF THE CONTRACTOR TO CLEAR THE RIGHT OF WAY IN ACCORDANCE WITH THE PROVISIONS OF LAW AS IT AFFECTS EACH UTILITY INCLUDING IRRIGATION LINES AND APPURTENANCES AND AT NO COST TO THE CITY.
- CONSTRUCTION SHALL BE IN ACCORDANCE WITH THE CITY OF RIVERSIDE DEPARTMENT OF PUBLIC WORKS, STANDARD DRAWINGS, ITS SUPPLEMENTAL NOTES AND THE STANDARD SPECIFICATIONS FOR PUBLIC WORKS CONSTRUCTION, CURRENT EDITION.
- THE PRIVATE ENGINEER SIGNING THESE PLANS IS RESPONSIBLE FOR ASSURING THE ACCURACY AND ACCEPTABILITY OF THE WORK HEREON. IN THE EVENT OF DISCREPANCIES ARISING DURING CONSTRUCTION, THE PRIVATE ENGINEER SHALL BE RESPONSIBLE FOR DETERMINING AN ACCEPTABLE SOLUTION AND REVISING THE PLANS FOR APPROVAL BY THE CITY.
- THE DEVELOPER SHALL BE RESPONSIBLE FOR PRESERVING OR RE-ESTABLISHING AND REFERENCING SURVEY MONUMENTS DESTROYED, DISTURBED OR BURIED AS A RESULT OF CONSTRUCTION SHOWN HEREON.
- ALL FLAGGED ELEVATIONS SHALL BE STAKED IN THE FIELD BY THE PRIVATE ENGINEER.
- THE CONTRACTOR SHALL CALL IN A LOCATION REQUEST TO UNDERGROUND SERVICE ALERT (USA), PHONE 1-800-227-2600, TWO WORKING DAYS BEFORE DIGGING. NO CONSTRUCTION PERMIT WILL BE ISSUED BY PUBLIC WORKS DEPARTMENT INVOLVING EXCAVATION FOR UNDERGROUND FACILITIES UNLESS THE APPLICANT HAS BEEN PROVIDED AN INQUIRY IDENTIFICATION NUMBER BY U.S.A.
- CONTRACTOR IS TO VERIFY EXISTING SEWER ELEVATION PRIOR TO START OF CONSTRUCTION.
- LOCATION OF LATERALS TO BE DETERMINED IN THE FIELD AT THE DIRECTION OF THE OWNER. AVOID CONFLICT WITH PROPOSED AND/OR EXISTING FACILITIES.
- NO FINISHED FLOOR ELEVATION SHALL BE LESS THAN 6" ABOVE THE UPPER MANHOLE RIM ELEVATION OF THE SEWER LINE SEGMENT BEING CONNECTED TO, WITHOUT HAVING A PROPER BACKWATER VALVE INSTALLED IN THE LATERAL.
- A PLUG SHALL BE INSTALLED AND WILL REMAIN IN PLACE WHERE THE NEW SEWER CONNECTS WITH THE EXISTING SEWER UNTIL THE NEW SEWER IS ACCEPTED BY THE CITY.
- THE SEWER CONTRACTOR SHALL ADJUST MANHOLES TO FINAL GRADE AFTER PAVING IS COMPLETED.
- NO PERSON SHALL PERFORM ANY CONSTRUCTION ACTIVITY OR INSTALL ANY OBJECTS WITHIN THE PUBLIC RIGHTS-OF-WAY OR EASEMENTS OF THE CITY OF RIVERSIDE WITHOUT A VALID CONSTRUCTION PERMIT OR A STREET OPENING PERMIT OR AN ENCROACHMENT PERMIT ISSUED BY THE CITY'S PUBLIC WORKS DEPARTMENT.
- ANY TRAFFIC CONTROL STRIPING OBLITERATED AND/OR BADLY WORN DURING CONSTRUCTION SHALL BE RESTORED BY THE CONTRACTOR WITHIN FIVE DAYS AFTER NOTIFICATION FROM THE CITY INSPECTORS.
- IN PAVEMENT OVERLAY AREAS, ANY DISTRESSED EXISTING PAVEMENT SHALL BE REMOVED AND REPLACED AS DIRECTED BY THE INSPECTOR PRIOR TO OVERLAYING WITH A.C. PAVING.

NOTICE TO CONTRACTOR

THE EXISTENCE AND LOCATIONS OF ALL UNDERGROUND UTILITIES (UTILITY PIPES, STRUCTURES, ETC.) SHOWN ON THESE PLANS (MAIN LINES ONLY - NO SERVICE LATERALS) WERE ASCERTAINED BY A REVIEW OF RECORDS PROVIDED BY THESE MEMBER AGENCIES AND ARE APPROXIMATE. NEITHER THE OWNER NOR THE ENGINEER ASSUMES ANY RESPONSIBILITY FOR UTILITIES NOT SHOWN OR NOT IN THE LOCATION SHOWN.

ELECTRIC - CITY OF RIVERSIDE
 GAS - SOUTHERN CALIFORNIA GAS CO.
 TELEPHONE - PACIFIC BELL
 WATER - CITY OF RIVERSIDE

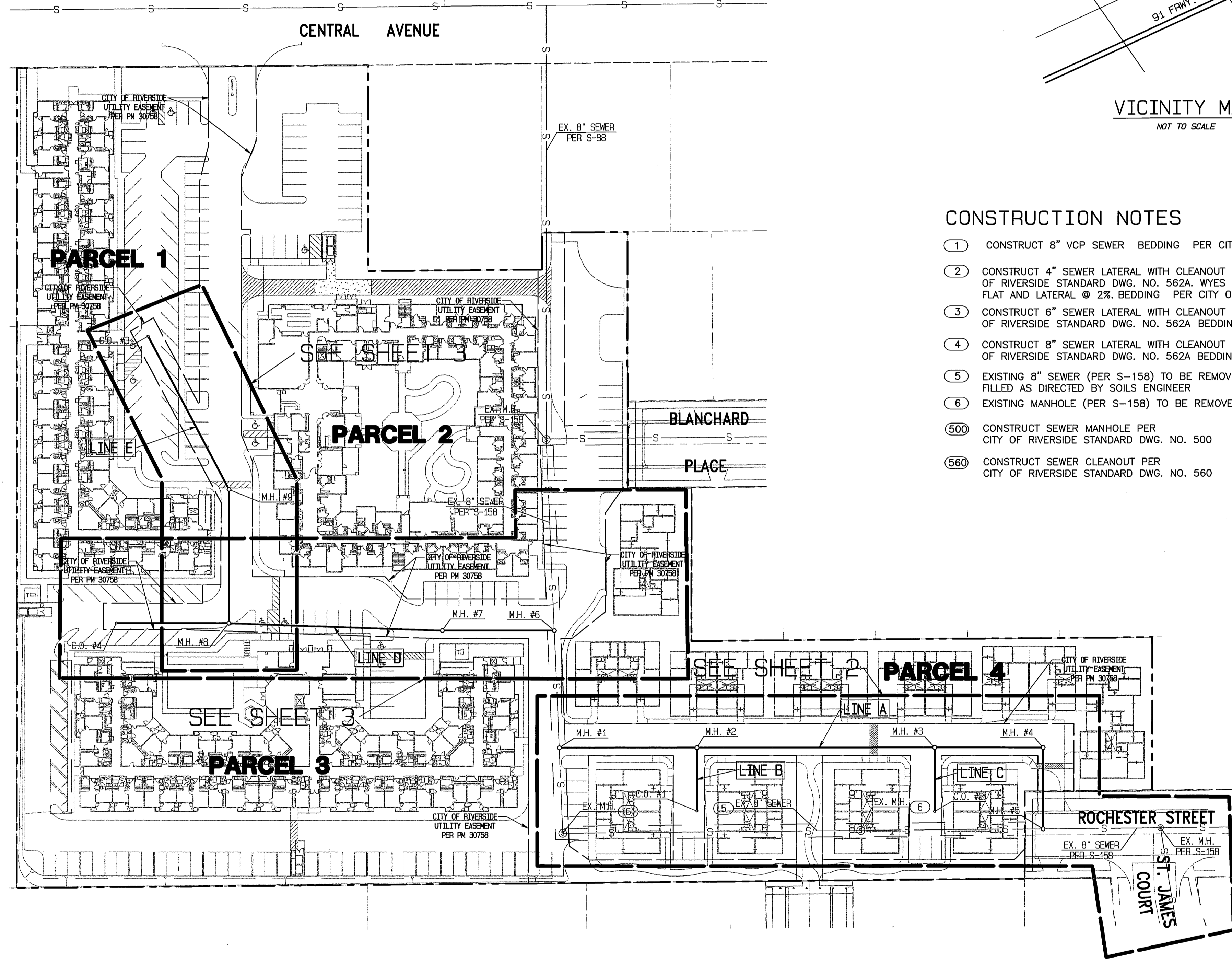
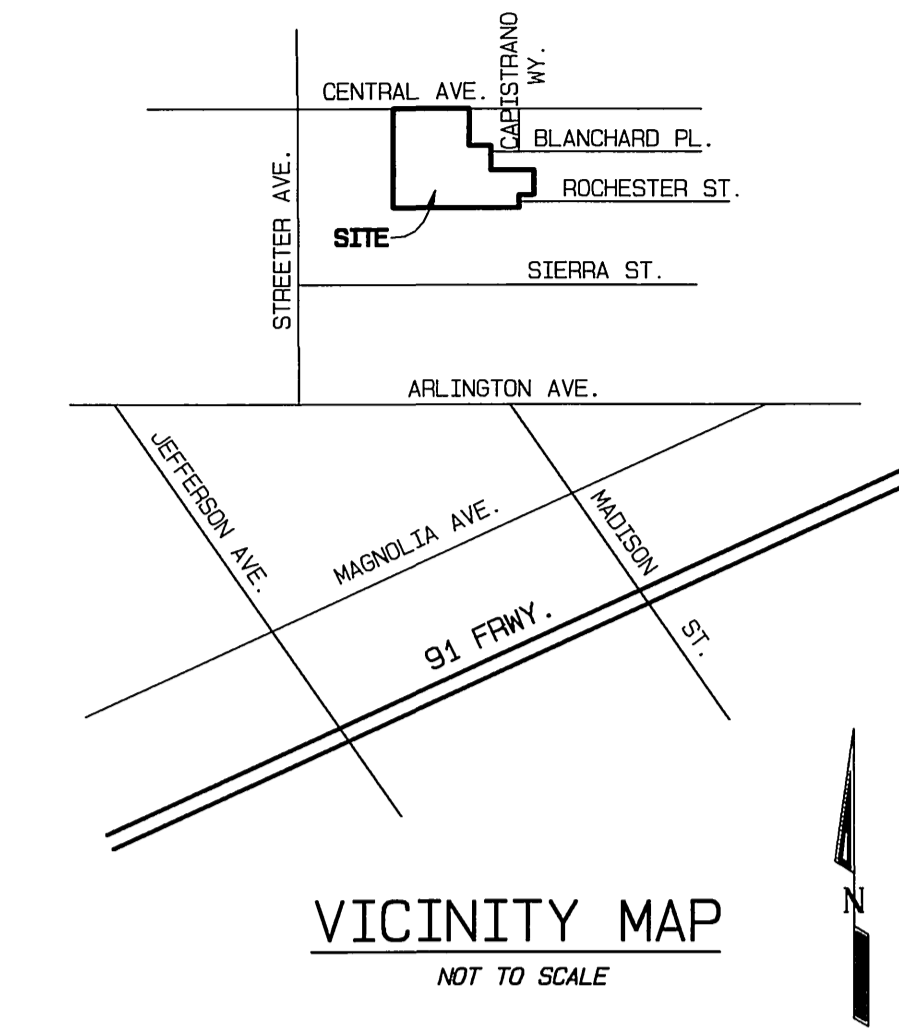
THE CONTRACTOR IS REQUIRED TO TAKE DUE PRECAUTIONARY MEASURES TO PROTECT ALL UTILITIES SHOWN ON THESE PLANS AND/OR ANY OTHER UNDERGROUND UTILITIES NOT OF RECORD OR NOT SHOWN ON THESE PLANS.

CALL UNDERGROUND SERVICE ALERT (U.S.A.) 1-800-227-2600 AT LEAST 2 WORKING DAYS PRIOR TO EXCAVATION.

BENCH MARK:

H5-C2 CITY OF RIVERSIDE B.M.. BRASS DISC
 IN MON. WELL. ELEV=777.794 DATUM: 1929

H5-F3 CITY OF RIVERSIDE B.M.. RAILROAD
 SPIKE IN POWER POLE #16917J.
 ELEV=788.643 DATUM: 1929

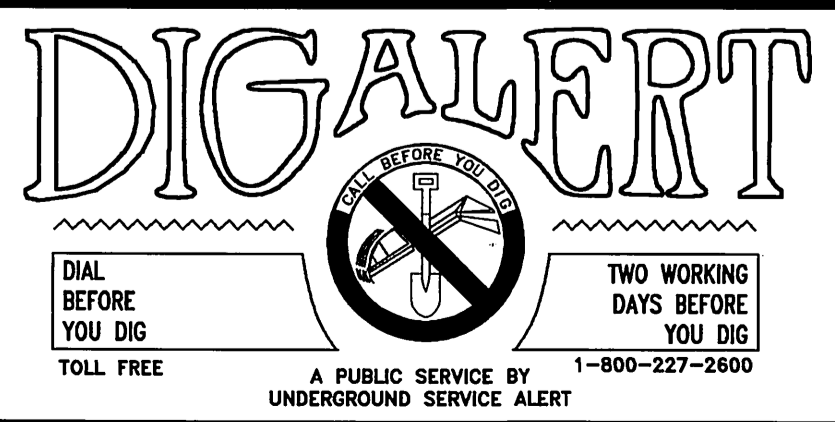
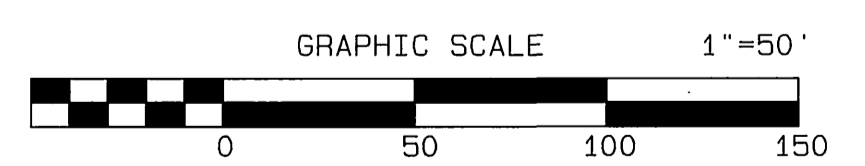


CONSTRUCTION NOTES

- CONSTRUCT 8" VCP SEWER BEDDING PER CITY OF RIVERSIDE STANDARD DWG. NO. 452
- CONSTRUCT 4" SEWER LATERAL WITH CLEANOUT PER CITY OF RIVERSIDE STANDARD DWG. NO. 562A. WYES OR SADDLES TO BE LAYED FLAT AND LATERAL @ 2% BEDDING PER CITY OF RIVERSIDE STANDARD DWG. NO. 452
- CONSTRUCT 6" SEWER LATERAL WITH CLEANOUT PER CITY OF RIVERSIDE STANDARD DWG. NO. 562A BEDDING PER CITY OF RIVERSIDE STANDARD DWG. NO. 452
- CONSTRUCT 8" SEWER LATERAL WITH CLEANOUT PER CITY OF RIVERSIDE STANDARD DWG. NO. 562A BEDDING PER CITY OF RIVERSIDE STANDARD DWG. NO. 452
- EXISTING 8" SEWER (PER S-158) TO BE REMOVED, CRUSHED IN PLACE OR FILLED AS DIRECTED BY SOILS ENGINEER
- EXISTING MANHOLE (PER S-158) TO BE REMOVED
- CONSTRUCT SEWER MANHOLE PER CITY OF RIVERSIDE STANDARD DWG. NO. 500
- CONSTRUCT SEWER CLEANOUT PER CITY OF RIVERSIDE STANDARD DWG. NO. 560

NOTE : ALL WYES TO ALL COTTAGES ARE TO BE LAID FLAT AND LATERALS @ 2%

INDEX MAP
 SCALE: 1" = 50'



CITY OF RIVERSIDE WATER DEPARTMENT (SHEETS 1 THRU 3)
 APPROVED BY: [Signature] DATE: 9/2/04



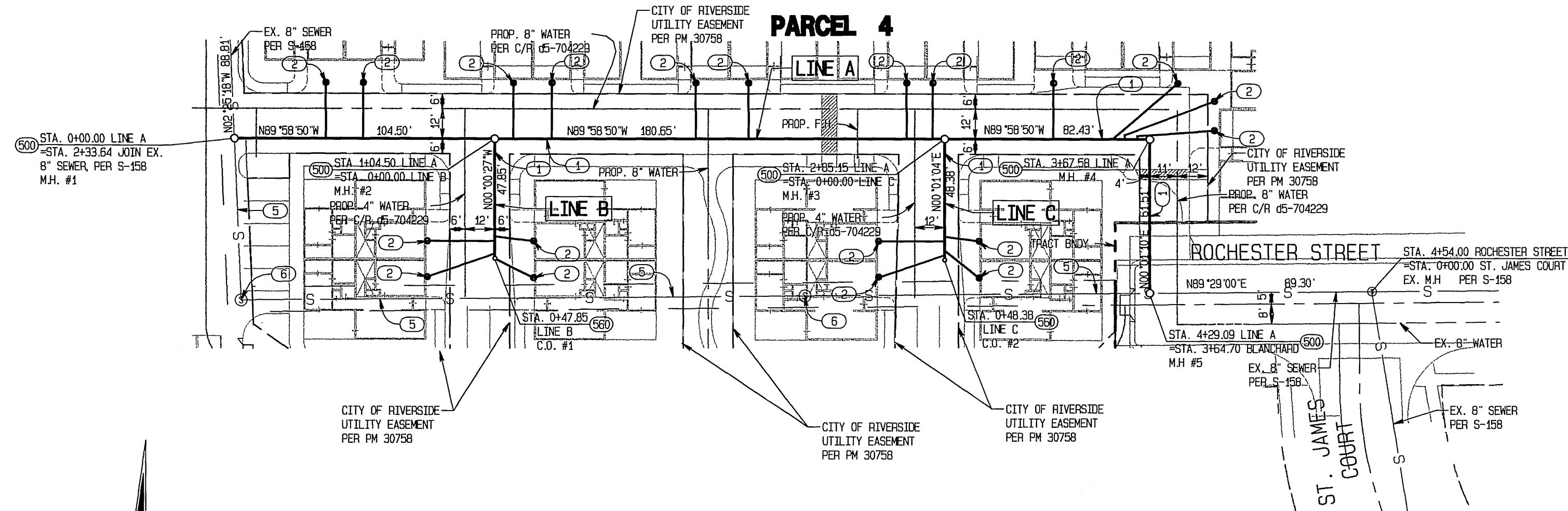
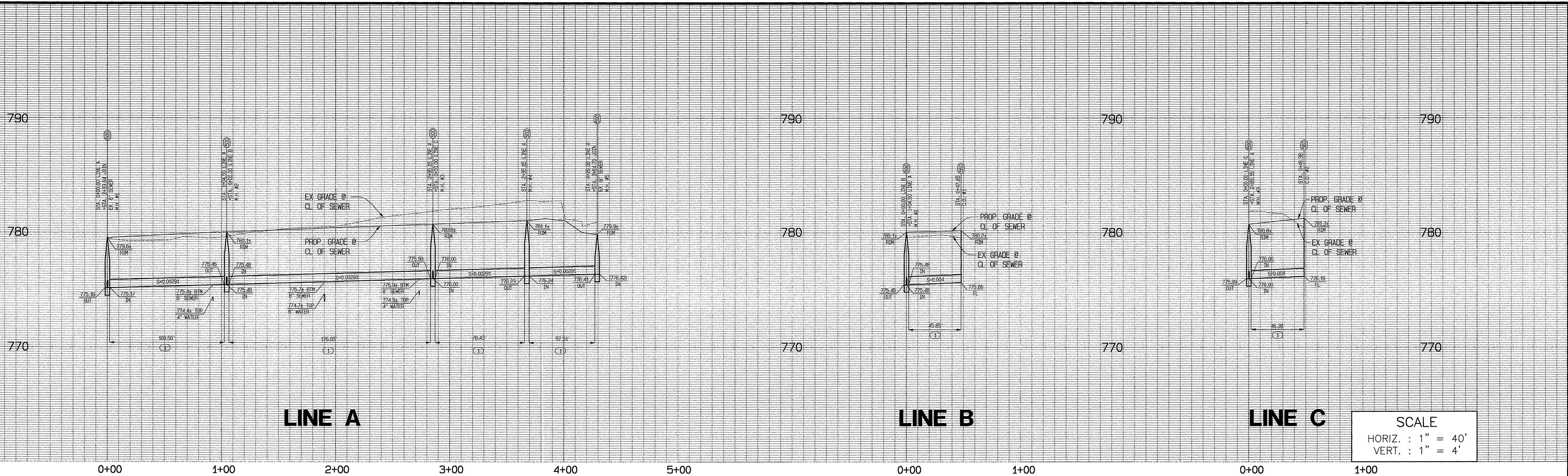
CITY BUSINESS TAX CERTIFICATE NO. 005751 EXP. 12-31-04
ALBERT A. WEBB ASSOCIATES
 3788 McCRAY STREET RIVERSIDE, CA 92506 (951) 686-1070
 APPROVED BY: [Signature] DATE: 8-23-04
 R.C.E. NO. C49405

MARK	REVISIONS	APPR.	DATE

CITY OF RIVERSIDE, CALIFORNIA PUBLIC WORKS DEPARTMENT
 APPROVED BY: [Signature] BY DATE: 9/2/04
 PRINCIPAL ENGINEER
 PARK DEPARTMENT
 TRAFFIC DIVISION
 DEP. P.W. DIRECTOR

SEWER IMPROVEMENT PLANS
 PM 30758
 INDEX SHEET
 SCALE: AS SHOWN

ACCOUNT NO. DRAWING NUMBER
S-1853
 SHEET 1 OF 3
 02-0062

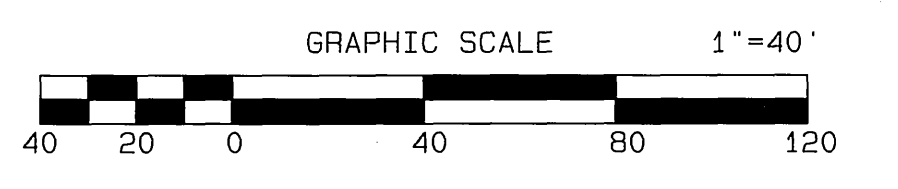


LINES A, B, & C

NOTE : ALL WYES TO ALL COTTAGES ARE TO BE LAID FLAT AND LATERALS @ 2%

CONSTRUCTION NOTES

- ① CONSTRUCT 8" VCP SEWER BEDDING PER CITY OF RIVERSIDE STANDARD DWG. NO. 452
- ② CONSTRUCT 4" SEWER LATERAL WITH CLEANOUT PER CITY OF RIVERSIDE STANDARD DWG. NO. 562A. WYES OR SADDLES TO BE LAYED FLAT AND LATERAL @ 2% BEDDING PER CITY OF RIVERSIDE STANDARD DWG. NO. 452
- ⑤ EXISTING 8" SEWER (PER S-158) TO BE REMOVED, CRUSHED IN PLACE OR FILLED AS DIRECTED BY SOILS ENGINEER
- ⑥ EXISTING MANHOLE (PER S-158) TO BE REMOVED
- ⑤00 CONSTRUCT SEWER MANHOLE PER CITY OF RIVERSIDE STANDARD DWG. NO. 500
- ⑤60 CONSTRUCT SEWER CLEANOUT PER CITY OF RIVERSIDE STANDARD DWG. NO. 560



BENCH MARK:
 H5-C2 CITY OF RIVERSIDE B.M.. BRASS DISC
 IN MON. WELL. ELEV=777.794 DATUM: 1929
 H5-F3 CITY OF RIVERSIDE B.M.. RAILROAD
 SPIKE IN POWER POLE #16917J.
 ELEV=788.643 DATUM: 1929



CITY BUSINESS TAX CERTIFICATE NO. 005751 EXP. 12-31-04

**ALBERT A. WEBB ASSOCIATES
 CIVIL ENGINEERS**
 3788 McCRAY STREET RIVERSIDE, CA 92506
 (951) 686-1070

APPROVED BY: *[Signature]* DATE: 8-23-04
 R.C.E. NO. C49405

MARK	REVISIONS	APPR.	DATE

CITY OF RIVERSIDE, CALIFORNIA
 PUBLIC WORKS DEPARTMENT

APPROVED BY	BY DATE	APPROVED BY
PRINCIPAL ENGINEER	<i>[Signature]</i>	<i>[Signature]</i>
PARK DEPARTMENT		
TRAFFIC DIVISION		
DEP. P.W. DIRECTOR		

DATE: 9/3/04

SEWER IMPROVEMENT PLANS

PM 30758

LINE A - STA. 0+00.00 TO STA. 4+29.09
 LINE B - STA. 0+00.00 TO STA. 0+47.85
 LINE C - STA. 0+00.00 TO STA. 0+48.38

SCALE: HORIZ.: 1" = 40' VERT.: 1" = 4'

ACCOUNT NO.
 DRAWING NUMBER
S-1853
 SHEET **2** OF **3**
 02-0062

