

SEWER IMPROVEMENT PLAN TRACT NO. 31671

GENERAL NOTES:

1. NO PERSON SHALL PERFORM ANY CONSTRUCTION ACTIVITY OR INSTALL ANY OBJECTS WITHIN THE PUBLIC RIGHT-OF-WAY OR EASEMENTS OF THE CITY OF RIVERSIDE WITHOUT A VALID CONSTRUCTION PERMIT, OR A STREET OPENING PERMIT OR AN ENCROACHMENT PERMIT ISSUED BY THE CITY'S PUBLIC WORKS DEPARTMENT.
2. IT SHALL BE THE RESPONSIBILITY OF THE CONTRACTOR TO CLEAR THE RIGHT OF WAY IN ACCORDANCE WITH THE PROVISIONS OF LAW AS IT AFFECTS EACH UTILITY INCLUDING IRRIGATION LINES AND APPURTENANCES AND AT NO COST TO THE CITY.
3. CONSTRUCTION SHALL BE IN ACCORDANCE WITH THE CITY OF RIVERSIDE DEPARTMENT OF PUBLIC WORKS STANDARD DRAWINGS, ITS SUPPLEMENTAL NOTES AND THE STANDARD SPECIFICATIONS FOR PUBLIC WORKS CONSTRUCTION, CURRENT EDITION.
4. THE PRIVATE ENGINEER SIGNING THESE PLANS IS RESPONSIBLE FOR ASSURING THE ACCURACY AND ACCEPTABILITY OF THE WORK HEREON. IN THE EVENT OF DISCREPANCIES ARISING DURING CONSTRUCTION, THE PRIVATE ENGINEER SHALL BE RESPONSIBLE FOR DETERMINING AN ACCEPTABLE SOLUTION AND REVISING THE PLANS FOR APPROVAL BY THE CITY.
5. THE DEVELOPER SHALL BE RESPONSIBLE FOR PRESERVING OR REESTABLISHING AND REFERENCING SURVEY MONUMENTS DESTROYED, DISTURBED OR BURIED AS A RESULT OF CONSTRUCTION SHOWN HEREON.
6. ALL FLAGGED ELEVATIONS SHALL BE STAKED IN THE FIELD BY THE PRIVATE ENGINEER.
7. THE CONTRACTOR SHALL CALL IN A LOCATION REQUEST TO UNDERGROUND SERVICE ALERT (USA), PHONE # 1-800-227-2600, TWO WORKING DAYS BEFORE DIGGING; NO CONSTRUCTION PERMIT WILL BE ISSUED BY THE PUBLIC WORKS DEPARTMENT INVOLVING EXCAVATION FOR UNDERGROUND FACILITIES UNLESS THE APPLICANT HAS BEEN PROVIDED AN INQUIRY IDENTIFICATION NUMBER BY U.S.A.
8. DEVELOPER/CONTRACTOR TO GIVE CITY WATER DIVISION FIVE (5) WORKING DAYS WRITTEN NOTICE PRIOR TO START OF CONSTRUCTION AND TO ALLOW CITY TEN (10) WORKING DAYS FOR COMPLETION OF WORK. (951) 351-6150.
9. THE CONTRACTOR SHALL COORDINATE TRENCHING FOR CABLE TELEVISION WITH OTHER TRENCHING WITHIN THE SUBDIVISION.
10. QUANTITIES SHOWN ARE FOR INFORMATION ONLY AND THE CITY OF RIVERSIDE IS NOT RESPONSIBLE FOR THEIR ACCURACY.
11. CONTRACTOR IS TO VERIFY EXISTING SEWER ELEVATION PRIOR TO CONSTRUCTION.
12. LOCATION OF LATERALS TO BE DETERMINED IN THE FIELD AT THE DIRECTION OF THE OWNER. AVOID CONFLICT WITH PROPOSED AND/OR EXISTING FACILITIES.
13. NO FINISHED FLOOR ELEVATION SHALL BE LESS THAN 6" ABOVE THE UPPER MANHOLE RIM ELEVATION OF THE SEWER LINE SEGMENT BEING CONNECTED TO, WITHOUT HAVING A PROPER BACKWATER VALVE INSTALLED IN THE LATERAL.
14. A PLUG SHALL BE INSTALLED AND WILL REMAIN IN PLACE WHERE THE NEW SEWER CONNECTS WITH THE EXISTING SEWER UNTIL THE NEW SEWER IS ACCEPTED BY THE CITY.
15. THE SEWER CONTRACTOR SHALL ADJUST MANHOLES TO FINAL GRADE AFTER PAVING IS COMPLETED.

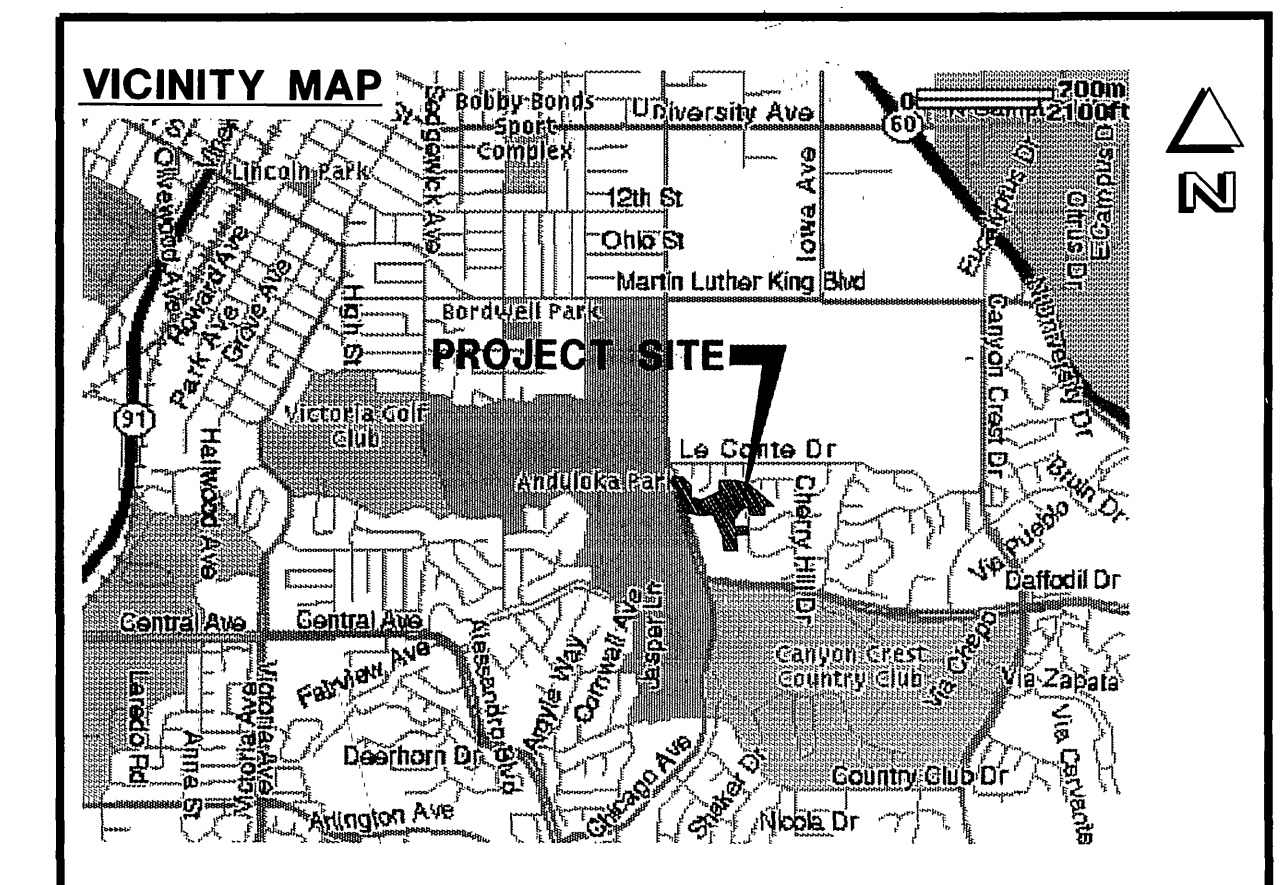
IF THIS PROJECT IS STAKED BY A SURVEY CREW THAT IS NOT UNDER THE DIRECT SUPERVISION OF THE SIGNATORY ENGINEER, THE SIGNATORY ENGINEER IS NO LONGER THE ENGINEER OF RECORD AND IS NOT RESPONSIBLE FOR THE FINAL OUTCOME OF THE PROJECT. THE SIGNATORY ENGINEER IS NOT RESPONSIBLE FOR ANY ERRORS AND OMISSIONS THAT COULD HAVE BEEN CORRECTED IF THE PROJECT HAD BEEN STAKED BY A SURVEY CREW UNDER HIS DIRECT SUPERVISION.

UNAUTHORIZED CHANGES & USES

CAUTION: THE ENGINEER PREPARING THESE PLANS WILL NOT BE RESPONSIBLE FOR, OR LIABLE FOR, UNAUTHORIZED CHANGES TO OR USES OF THESE PLANS. ALL CHANGES TO THE PLANS MUST BE IN WRITING AND MUST BE APPROVED BY THE PREPARER OF THESE PLANS.

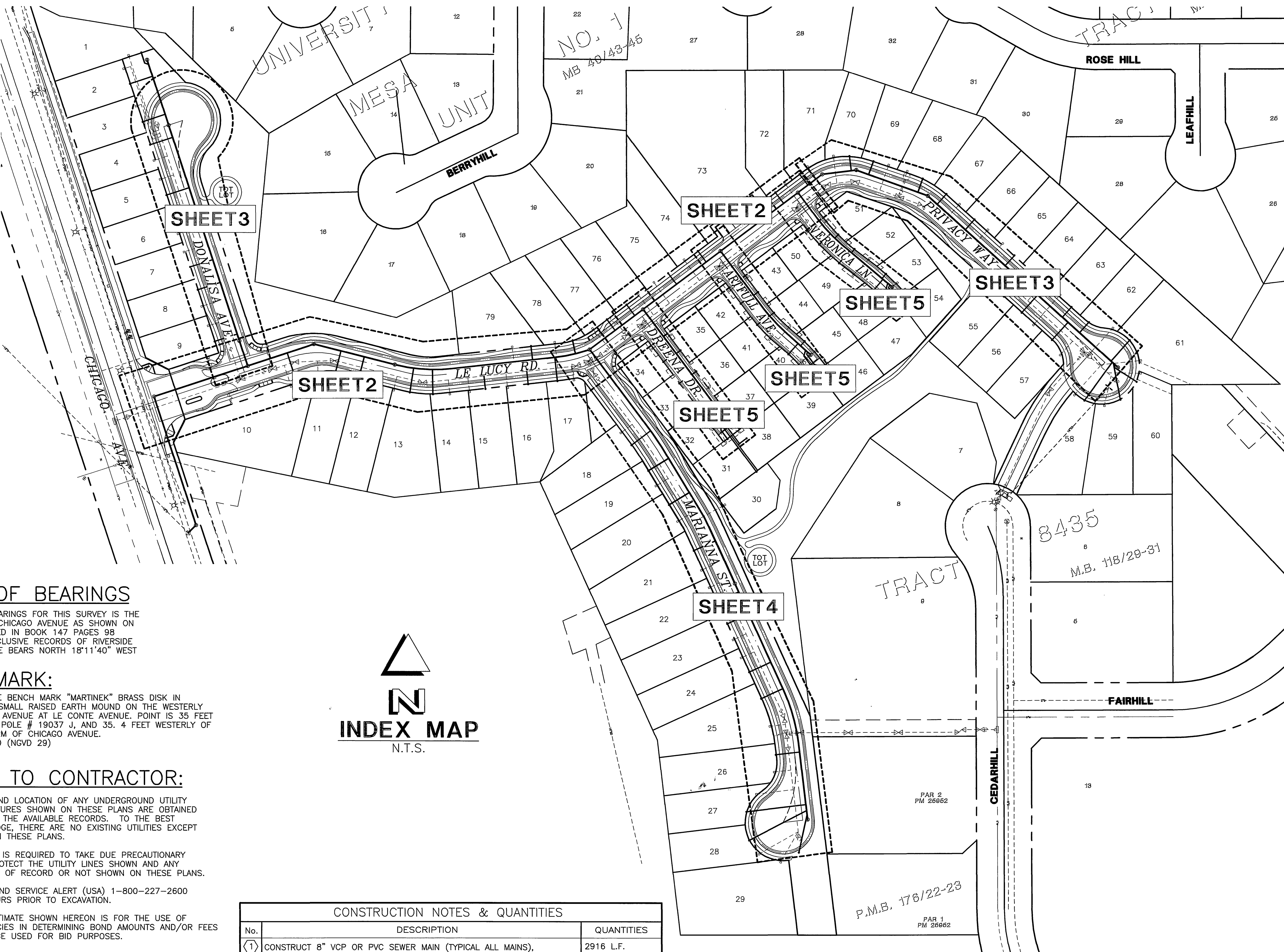
LEGEND:

- PROPOSED 8" V.C.P. SEWER MAIN
- PROPOSED SEWER LATERAL WITH CLEANOUT
- PROPOSED SEWER MANHOLE
- EXISTING SEWER MAIN



RIVERSIDE CITY BUSINESS TAX CERTIFICATE # 75296 EXP. 6/10/05

PW04-0861



BASIS OF BEARINGS

THE BASIS OF BEARINGS FOR THIS SURVEY IS THE CENTER LINE OF CHICAGO AVENUE AS SHOWN ON TRACT 18834 FILED IN BOOK 147 PAGES 98 THROUGH 100 INCLUSIVE RECORDS OF RIVERSIDE COUNTY. SAID LINE BEARS NORTH 18°11'40" WEST

BENCHMARK:

CITY OF RIVERSIDE BENCH MARK "MARTINEK" BRASS DISK IN CONCRETE ON A SMALL RAISED EARTH MOUND ON THE WESTERLY SIDE OF CHICAGO AVENUE AT LE CONTE AVENUE. POINT IS 35 FEET SOUTHERLY OF A POLE # 19037 J, AND 35.4 FEET WESTERLY OF THE EXISTING BERM OF CHICAGO AVENUE. ELEVATION: 984.90 (NGVD 29)



NOTICE TO CONTRACTOR:

THE EXISTENCE AND LOCATION OF ANY UNDERGROUND UTILITY PIPES OR STRUCTURES SHOWN ON THESE PLANS ARE OBTAINED BY A SEARCH OF THE AVAILABLE RECORDS. TO THE BEST OF OUR KNOWLEDGE, THERE ARE NO EXISTING UTILITIES EXCEPT THOSE SHOWN ON THESE PLANS.

THE CONTRACTOR IS REQUIRED TO TAKE DUE PRECAUTIONARY MEASURES TO PROTECT THE UTILITY LINES SHOWN AND ANY OTHER LINES NOT OF RECORD OR NOT SHOWN ON THESE PLANS.

CALL UNDERGROUND SERVICE ALERT (USA) 1-800-227-2600 AT LEAST 48 HOURS PRIOR TO EXCAVATION.

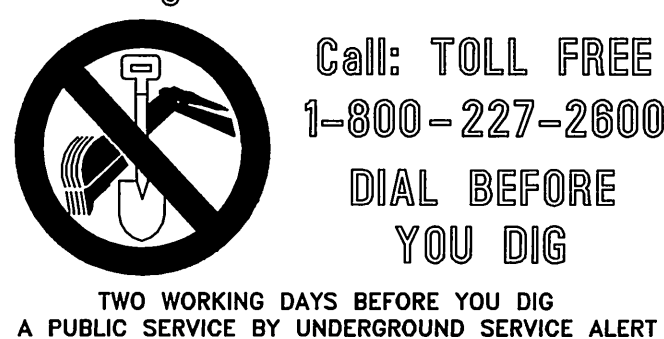
THE QUANTITY ESTIMATE SHOWN HEREON IS FOR THE USE OF GOVERNING AGENCIES IN DETERMINING BOND AMOUNTS AND/OR FEES AND IS NOT TO BE USED FOR BID PURPOSES.

UTILITY VERIFICATION

CONTRACTOR SHALL VERIFY LOCATION (VERTICAL AND HORIZONTAL) OF ALL POINTS OF CONNECTION TO EXISTING FACILITIES. IF LOCATIONS DIFFER THAN THOSE SHOWN ON THESE CONSTRUCTION DRAWINGS, CONTRACTOR SHALL NOTIFY THE SIGNATORY ENGINEER IN WRITING IN ORDER TO DETERMINE CORRECTIVE ACTION TO BE TAKEN.

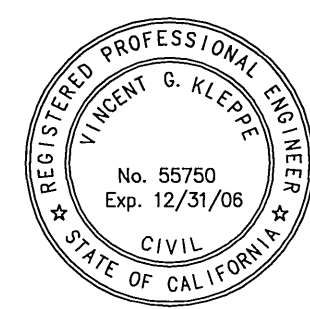
CONSTRUCTION NOTES & QUANTITIES		
No.	DESCRIPTION	QUANTITIES
①	CONSTRUCT 8" VCP OR PVC SEWER MAIN (TYPICAL ALL MAINS), PIPE BEDDING CASE 1 PER CITY STD DWG No. 452	2916 L.F.
②	INSTALL CONC MANHOLE PER CITY SEWER STD DWG No. 500	20 EA.
③	INSTALL SEWER CLEAN OUT PER CITY SEWER STD DWG No. 560	2 EA.
④	CONSTRUCT 4" SEWER LATERAL WITH CLEAN OUT @ P.L. PER CITY STD DWG No. 562A PIPE BEDDING CASE 1 PER CITY STD DWG No. 452	1860 L.F./79 EA.

Underground Service Alert



Prepared Under The Supervision Of:

Date: 6-6-05
 Vincent Keppel
 REGISTERED CIVIL ENGINEER NO. 55750
 REGISTRATION EXPIRES: 12/31/08



PRIZM GROUP
 310 N. COTA ST., SUITE 1, CORONA, CA 92880
 PHONE: (951) 737-4406 • FAX: (951) 737-4407 • info@the-prizm-group.com

Scale: N.T.S.
 Date: 6-6-05

Bench Mark:
 CITY OF RIVERSIDE BM "MARTINEK"
 ELEV. 984.90 (NGVD 29)
 SEE THIS SHEET

REVISIONS:		
REMARK	DESCRIPTION	APPR. DATE

CITY OF RIVERSIDE WATER DEPT
 Approved By: *MW McLeod* 6/17/05
 APPROVED BY

CITY OF RIVERSIDE, CALIFORNIA PUBLIC WORKS DEPARTMENT

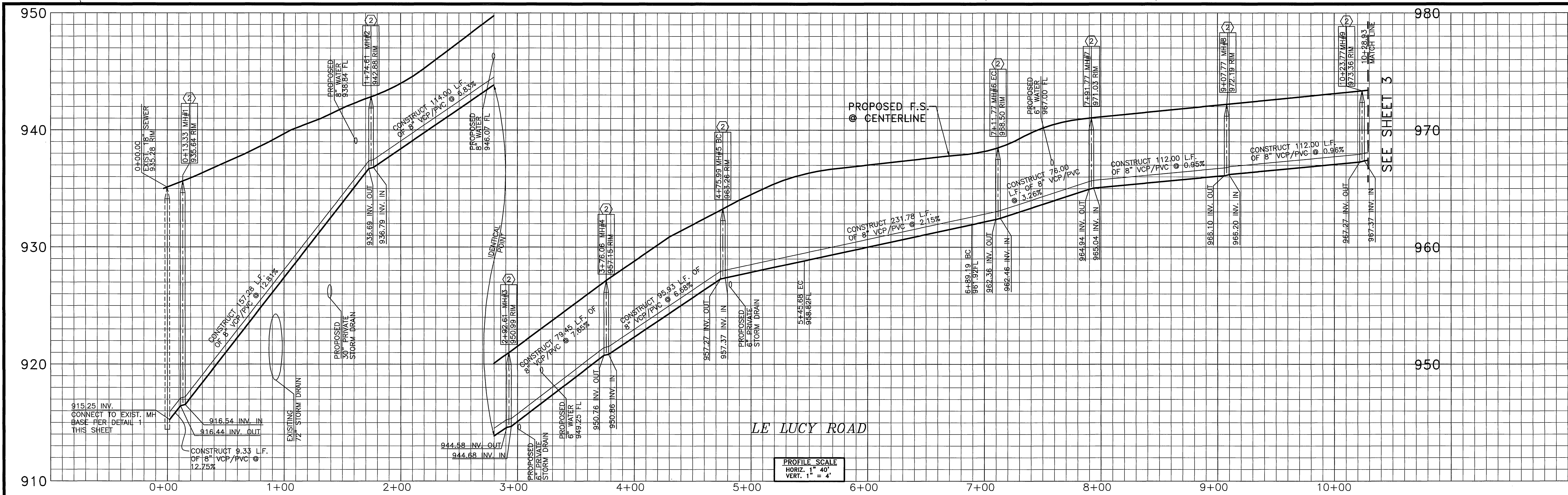
Approved By:	BY:	Date:
PARK DEPARTMENT	<i>[Signature]</i>	7/14/05
TRAFFIC DIVISION		

APPROVED BY
[Signature]
 CITY ENGINEER
 DATE 7/14/05

File name: P:\TPC\02\02-0401\SS\02-0401SS01.dwg

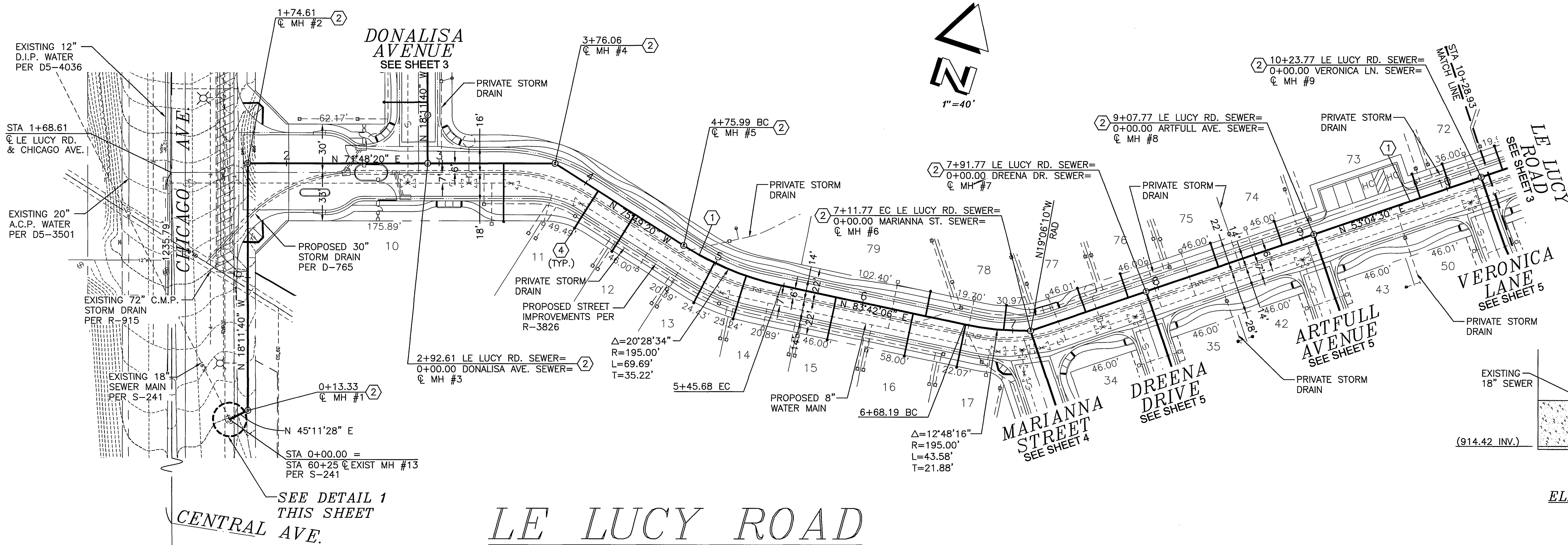
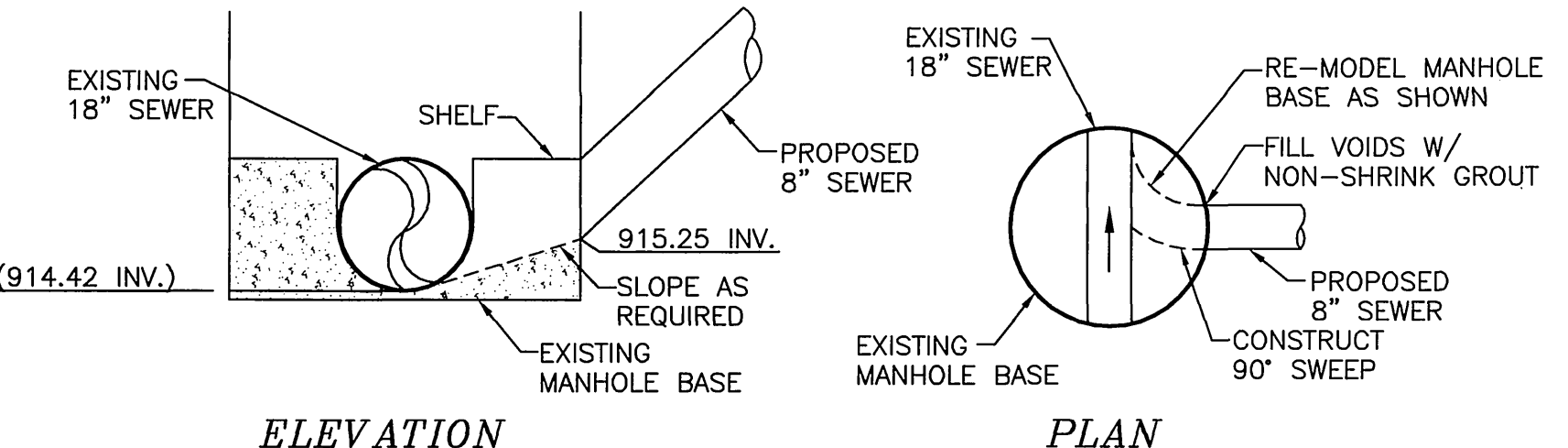
S-1871

Sheet 1 OF 5 SHEETS
 FILE NO. 02-0401



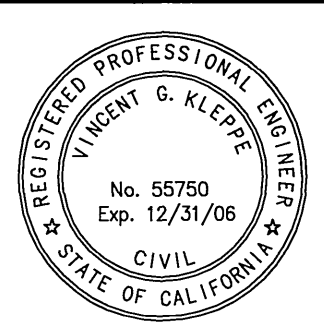
CONSTRUCTION NOTES	
No.	DESCRIPTION
1	CONSTRUCT 8" VCP OR PVC SEWER MAIN (TYPICAL ALL MAINS), PIPE BEDDING CASE 1 PER CITY STD DWG No. 452
2	INSTALL CONC MANHOLE PER CITY SEWER STD DWG No. 500
3	INSTALL SEWER CLEAN OUT PER CITY SEWER STD DWG No. 560
4	CONSTRUCT 4" SEWER LATERAL WITH CLEAN OUT @ P.L. PER CITY STD DWG NO. 562A PIPE BEDDING CASE 1 PER CITY STD DWG No. 452

BENCHMARK
 CITY OF RIVERSIDE BENCH MARK "MARTINEK" BRASS DISK IN CONCRETE ON A SMALL RAISED EARTH MOUND ON THE WESTERLY SIDE OF CHICAGO AVENUE AT LE CONTE AVENUE. POINT IS 35 FEET SOUTHERLY OF A POLE # 19037 J, AND 35.4 FEET WESTERLY OF THE EXISTING BERM OF CHICAGO AVENUE. ELEVATION: 984.90 (NGVD 29)



Underground Service Alert
 Call: TOLL FREE
 1-800-227-2600
 DIAL BEFORE YOU DIG
 TWO WORKING DAYS BEFORE YOU DIG
 A PUBLIC SERVICE BY UNDERGROUND SERVICE ALERT

Prepared Under The Supervision Of:
Vincent G. Kleffe
 Vincent G. Kleffe
 REGISTERED CIVIL ENGINEER NO. 56750
 REGISTRATION EXPIRES: 12/31/08
 Date: 6-6-05



PRIZM GROUP
 310 N. GOTA ST. SUITE 1, CORONA, CA 92880
 PHONE: (951) 737-4408 • FAX: (951) 737-4407 • 1bg@the-prizm-group.com

CREEKSIDE TERRACE

Scale: 1" = 40'
 Date: 6-6-05

Bench Mark: CITY OF RIVERSIDE BM "MARTINEK" ELEV: 984.90 (NGVD 29) (SEE THIS SHEET)

REVISIONS:		APR.	DATE:
REMARK	DESCRIPTION		
DESIGNED: VGK	DRAWN: BM	CHECKED: VGK	

CITY OF RIVERSIDE
 WATER DEPT
M.W. McLaughlin
 APPROVED BY

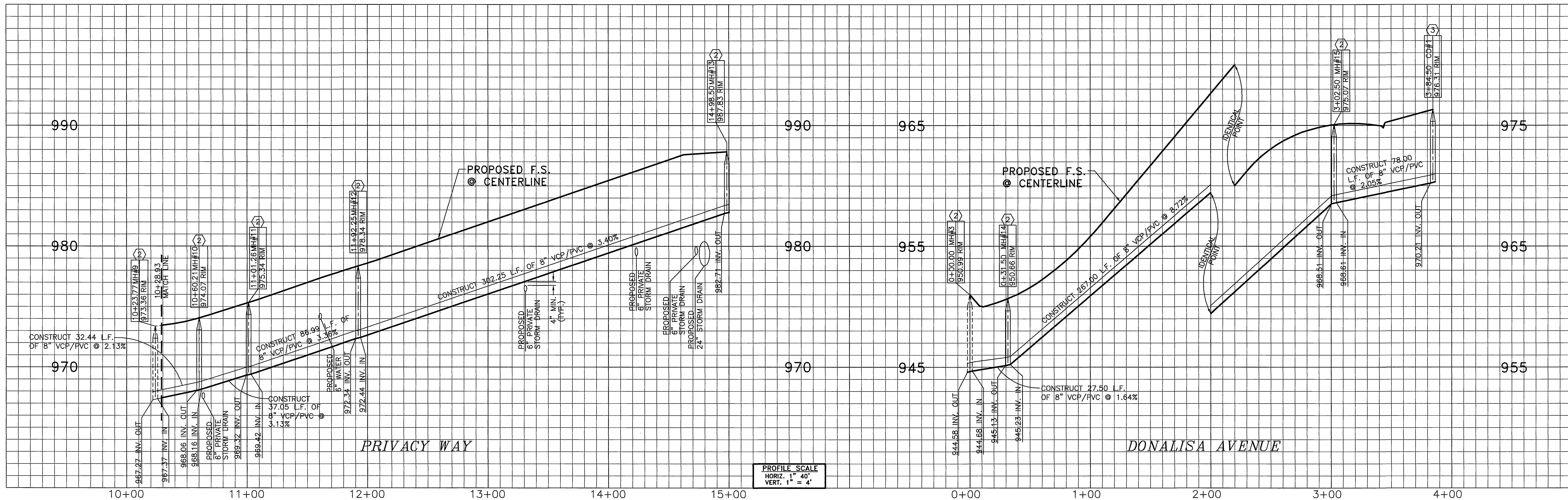
CITY OF RIVERSIDE, CALIFORNIA PUBLIC WORKS DEPARTMENT			
APPROVED BY:	BY:	DATE:	APPROVED BY:
PRINCIPAL ENG.			
PARKS DEPARTMENT			
TRAFFIC DIVISION			

**TRACT 31671
SEWER IMPROVEMENT
PLANS
LE LUCY RD.**

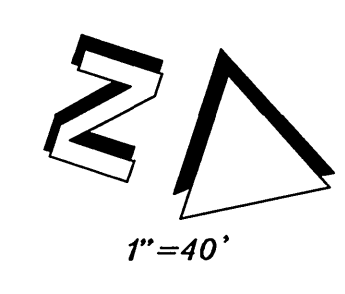
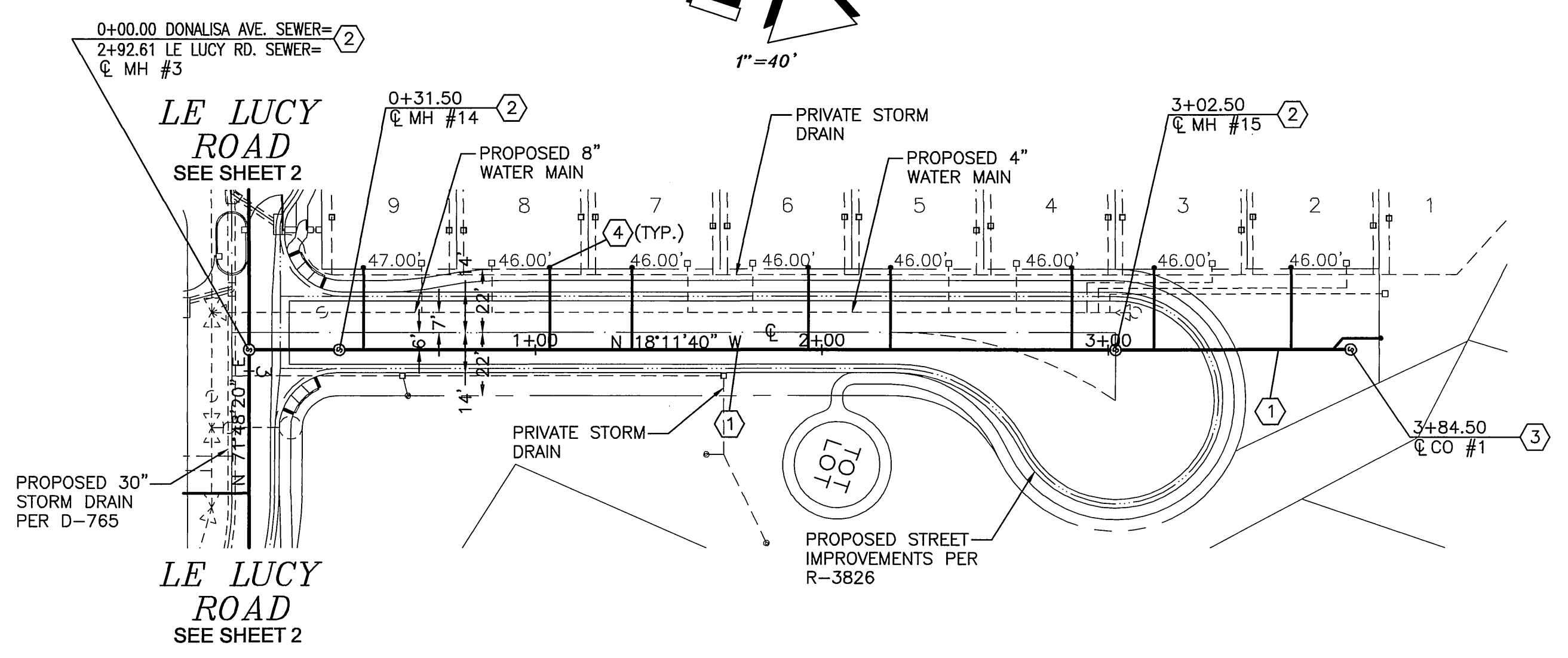
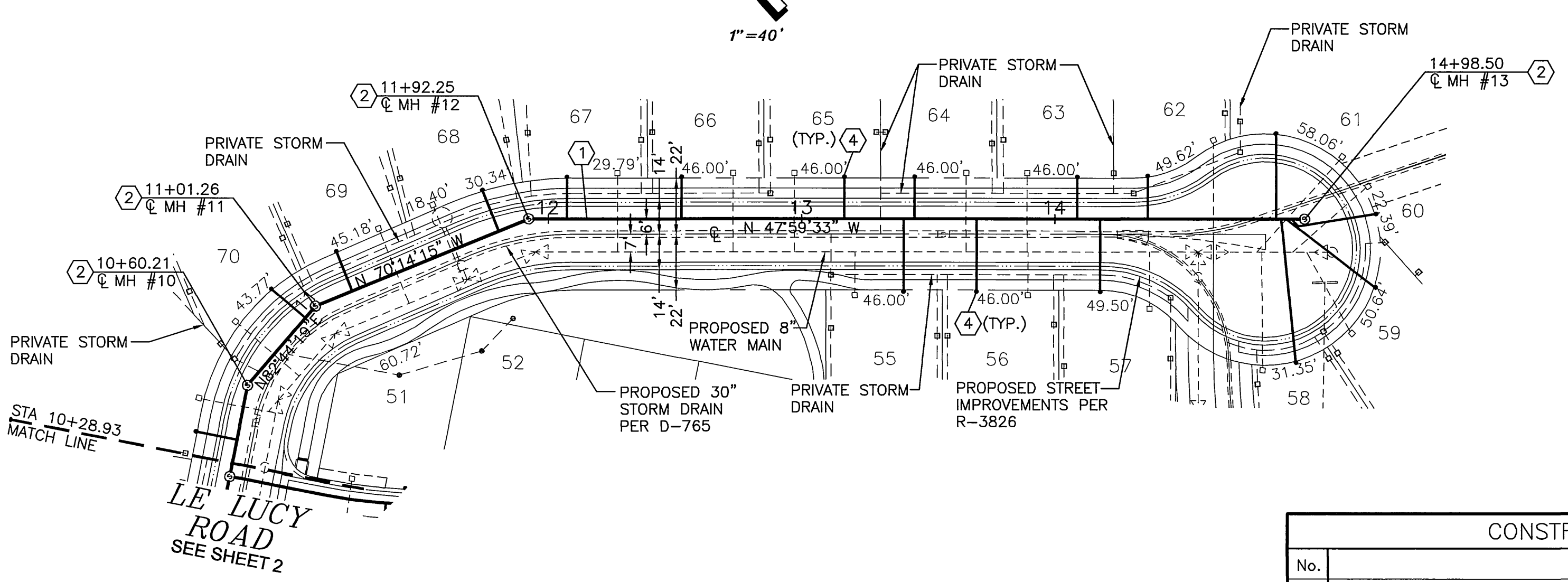
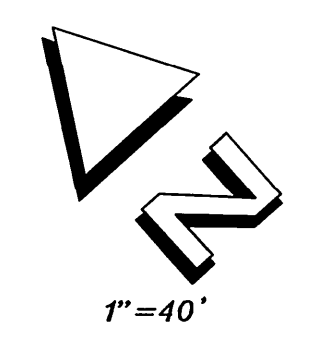
File name: P:\TPG\02\02-0401\SS\02-0401SS02.dwg

PW04-0861

S-1871
 Sheet 2
 OF 5 SHEETS
 FILE NO.
 02-0401



PROFILE SCALE
 HORIZ. 1" = 40'
 VERT. 1" = 4'



PRIVACY WAY

DONALISA AVENUE

CONSTRUCTION NOTES	
No.	DESCRIPTION
1	CONSTRUCT 8" VCP OR PVC SEWER MAIN (TYPICAL ALL MAINS), PIPE BEDDING CASE 1 PER CITY STD DWG No. 452
2	INSTALL CONC MANHOLE PER CITY SEWER STD DWG No. 500
3	INSTALL SEWER CLEAN OUT PER CITY SEWER STD DWG No. 560
4	CONSTRUCT 4" SEWER LATERAL WITH CLEAN OUT @ P.L. PER CITY STD DWG NO. 562A PIPE BEDDING CASE 1 PER CITY STD DWG No. 452

BENCHMARK
 CITY OF RIVERSIDE BENCH MARK "MARTINEK" BRASS DISK IN CONCRETE ON A SMALL RAISED EARTH MOUND ON THE WESTERLY SIDE OF CHICAGO AVENUE AT LE CONTE AVENUE. POINT IS 35 FEET SOUTHERLY OF A POLE # 19037 J, AND 35.4 FEET WESTERLY OF THE EXISTING BERM OF CHICAGO AVENUE.
 ELEVATION: 984.90 (NGVD 29)

Underground Service Alert
 Call: TOLL FREE
 1-800-227-2600
 DIAL BEFORE YOU DIG
 TWO WORKING DAYS BEFORE YOU DIG
 A PUBLIC SERVICE BY UNDERGROUND SERVICE ALERT

Prepared Under The Supervision Of:
Vincent G. Kleppe
 REGISTERED CIVIL ENGINEER NO. 55750
 REGISTRATION EXPIRES: 12/31/08
 Date: 6-6-05

REGISTERED PROFESSIONAL ENGINEER
VINCENT G. KLEPPE
 No. 55750
 Exp. 12/31/08
 CIVIL
 STATE OF CALIFORNIA

PRIZM GROUP
 310 N. COTA ST. SUITE 1, CORONA, CA 92680
 PHONE: (951) 737-4406 • FAX: (951) 737-4407 • info@the-prizm-group.com
 Scale: 1" = 40'
 Date: 6-6-05
CREEKSIDE TERRACE

REVISIONS:		
REMARK	DESCRIPTION	APR. DATE:

CITY OF RIVERSIDE
 WATER DEPT
 APPROVED BY: *M. McLean* 6/7/05

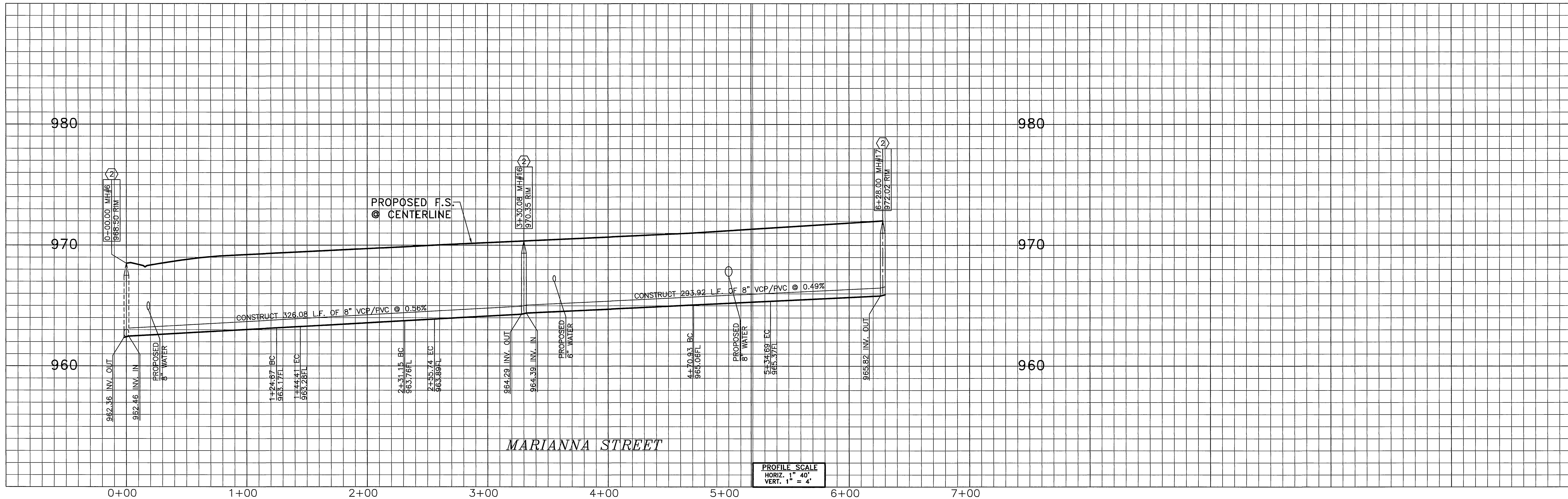
CITY OF RIVERSIDE, CALIFORNIA
 PUBLIC WORKS DEPARTMENT
 Approved By: BY: *[Signature]* Date: *6/7/05*
 PRINCIPAL ENG. *[Signature]*
 PARKS DEPARTMENT
 TRAFFIC DIVISION
 DATE: *6/7/05*

TRACT 31671
 SEWER IMPROVEMENT
 PLANS
 PRIVACY WAY &
 DONALISA AVE.
 File name: P:\TPG\02\02-0401\SS\02-0401SS03.dwg

PW04-0861

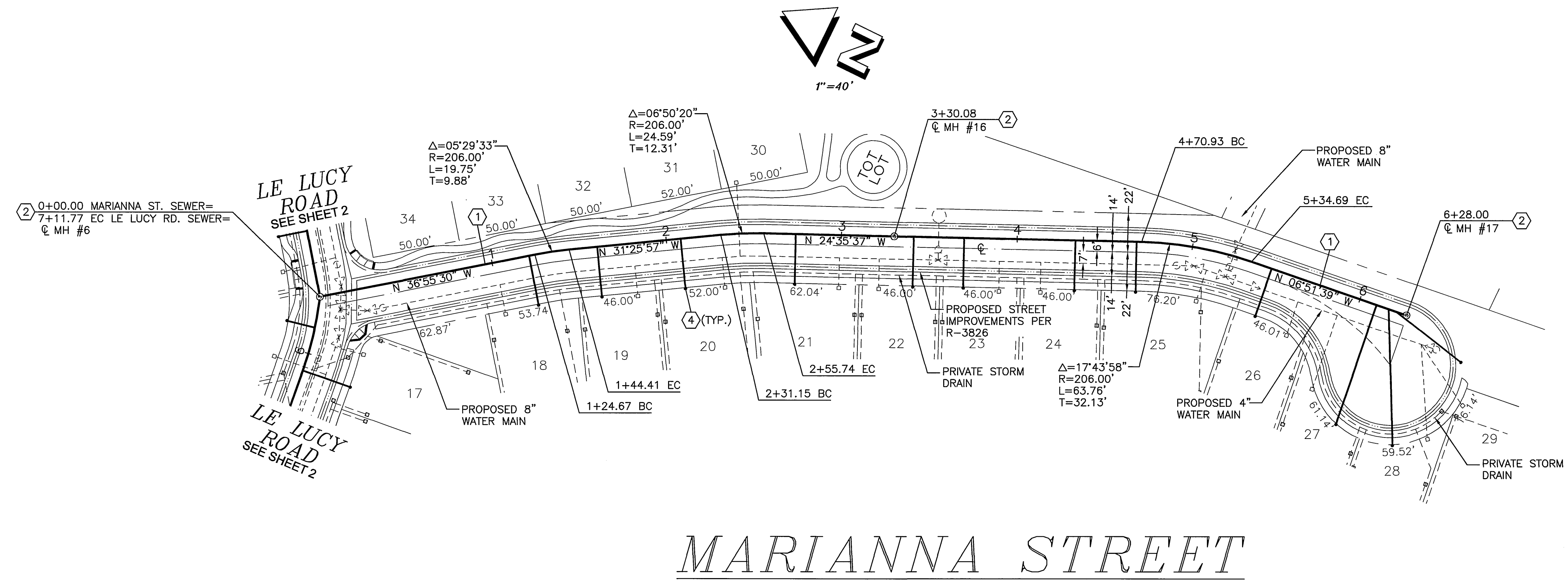
S-1871
 Sheet 3
 OF 5 SHEETS
 FILE NO.
 02-0401

INDEXED 8-01-05 LHM



CONSTRUCTION NOTES	
No.	DESCRIPTION
①	CONSTRUCT 8" VCP OR PVC SEWER MAIN (TYPICAL ALL MAINS), PIPE BEDDING CASE 1 PER CITY STD DWG No. 452
②	INSTALL CONC MANHOLE PER CITY SEWER STD DWG No. 500
③	INSTALL SEWER CLEAN OUT PER CITY SEWER STD DWG No. 560
④	CONSTRUCT 4" SEWER LATERAL WITH CLEAN OUT @ P.L. PER CITY STD DWG No. 562A PIPE BEDDING CASE 1 PER CITY STD DWG No. 452

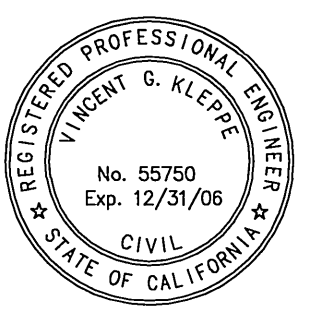
BENCHMARK
 CITY OF RIVERSIDE BENCH MARK "MARTINEK" BRASS DISK IN CONCRETE ON A SMALL RAISED EARTH MOUND ON THE WESTERLY SIDE OF CHICAGO AVENUE AT LE CONTE AVENUE. POINT IS 35 FEET SOUTHERLY OF A POLE # 19037 J, AND 35.4 FEET WESTERLY OF THE EXISTING BERM OF CHICAGO AVENUE.
 ELEVATION: 984.90 (NGVD 29)



PW04-0861

Underground Service Alert
 Call: TOLL FREE
 1-800-227-2600
 DIAL BEFORE YOU DIG
 TWO WORKING DAYS BEFORE YOU DIG
 A PUBLIC SERVICE BY UNDERGROUND SERVICE ALERT

Prepared Under The Supervision Of:
Vincent G. Kleppe
 REGISTERED CIVIL ENGINEER NO. 55750
 REGISTRATION EXPIRES: 12/31/08
 Date: 6-6-05



TPG GROUP
 310 N. COTA ST. SUITE 1, CORONA, CA 92880
 PHONE: (951) 737-4406 • FAX: (951) 737-4407 • tpg@the-tpg-group.com
 Scale: 1" = 40'
 Date: 6-6-05
CREEKSIDE TERRACE

REVISIONS:

REMARK	DESCRIPTION	APR.	DATE

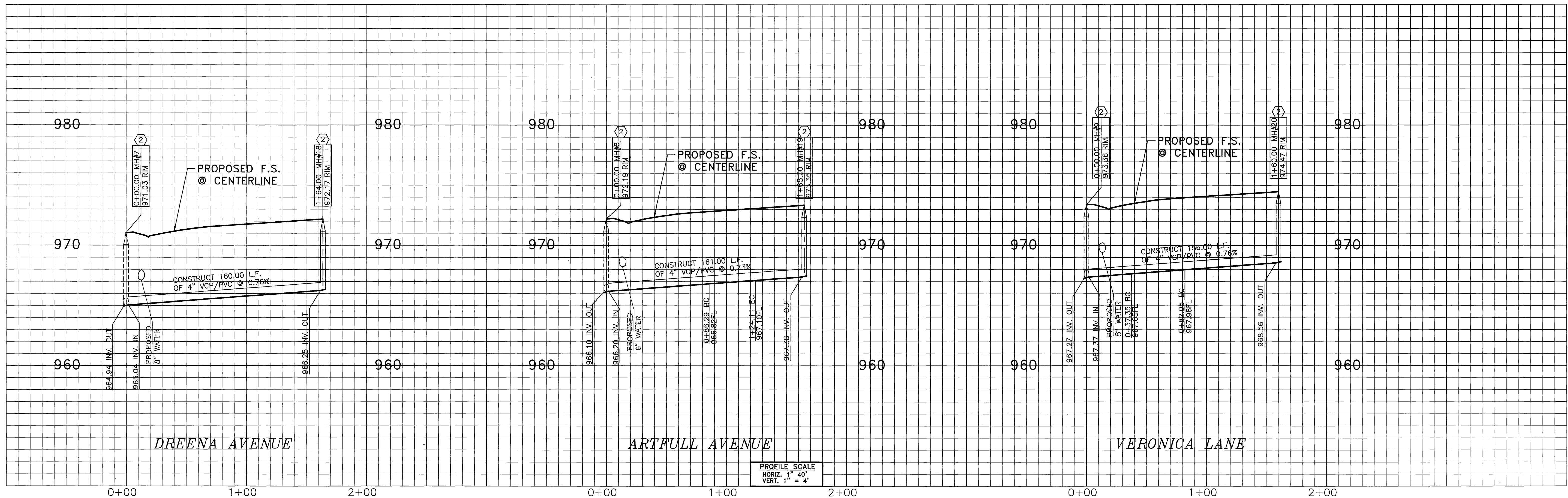
DESIGNED: VGK DRAWN: BM CHECKED: VGK

CITY OF RIVERSIDE
 WATER DEPT
 APPROVED BY: *MW McNeil*
 DATE: 2/1/05

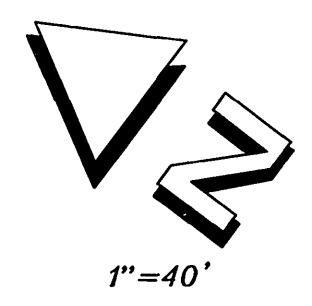
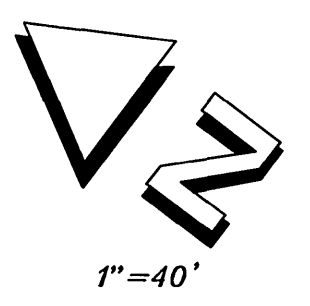
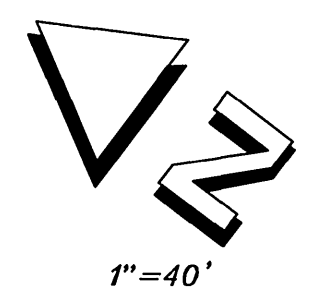
CITY OF RIVERSIDE, CALIFORNIA
 PUBLIC WORKS DEPARTMENT
 Approved By: BY: *Se* Date: *2/1/05*
 APPROVED BY: *Shawn Boyd*
 CITY ENGINEER
 DATE: *2/1/05*

TRACT 31671
 SEWER IMPROVEMENT
 PLANS
 MARIANNA ST.
 File name: P:\TPG\02\02-0401\SS\02-0401SS04.dwg

S-1871
 Sheet 4
 OF 5 SHEETS
 FILE NO.
 02-0401

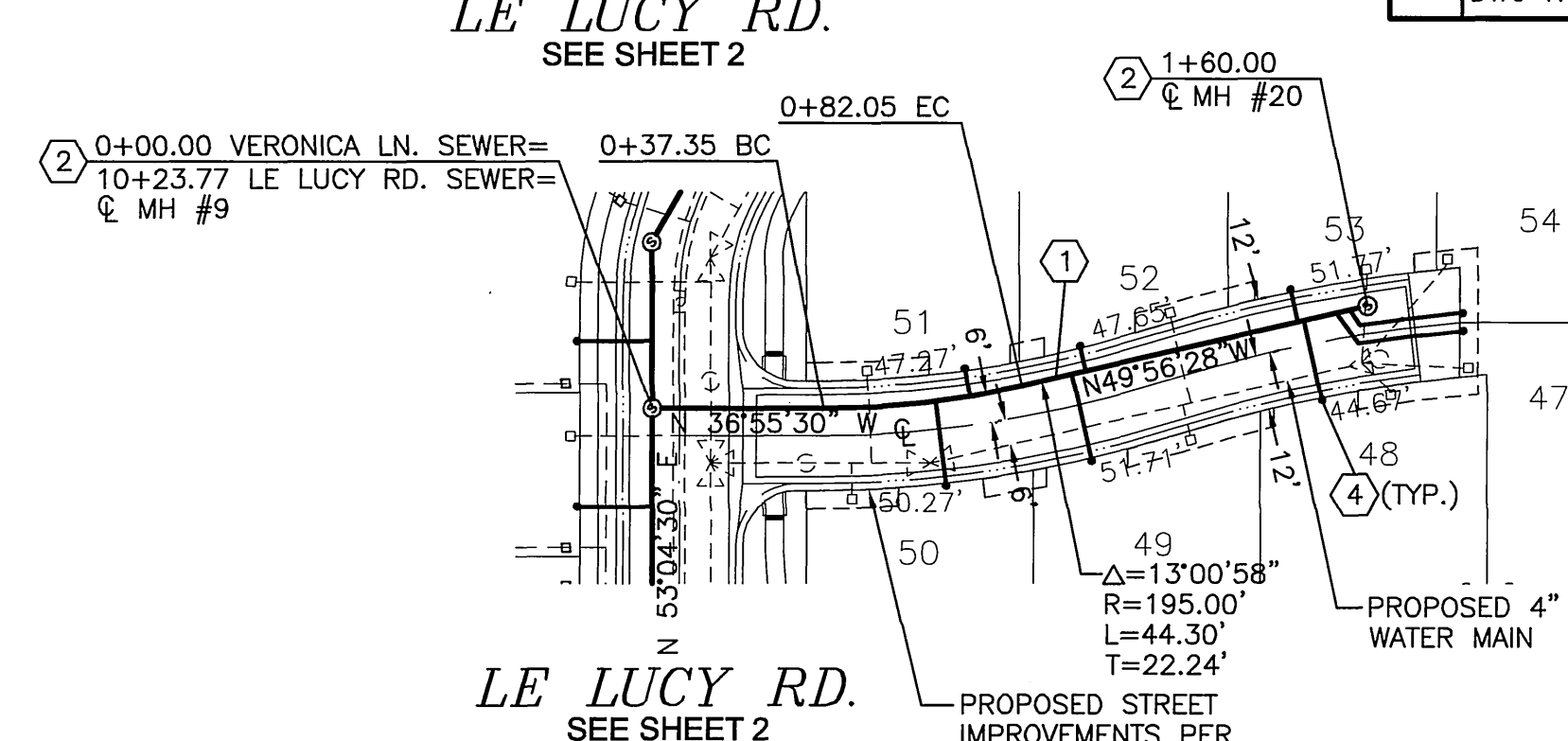
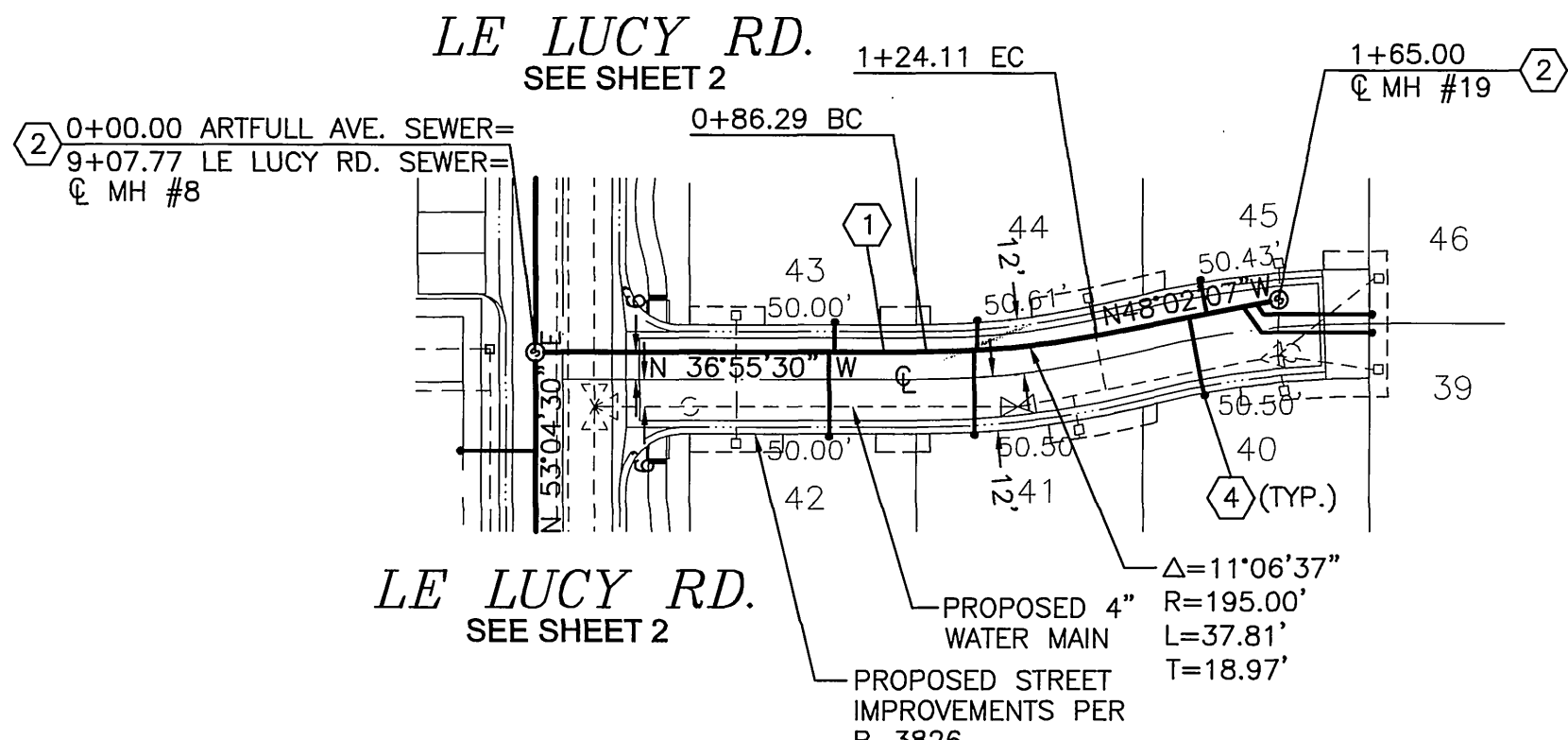
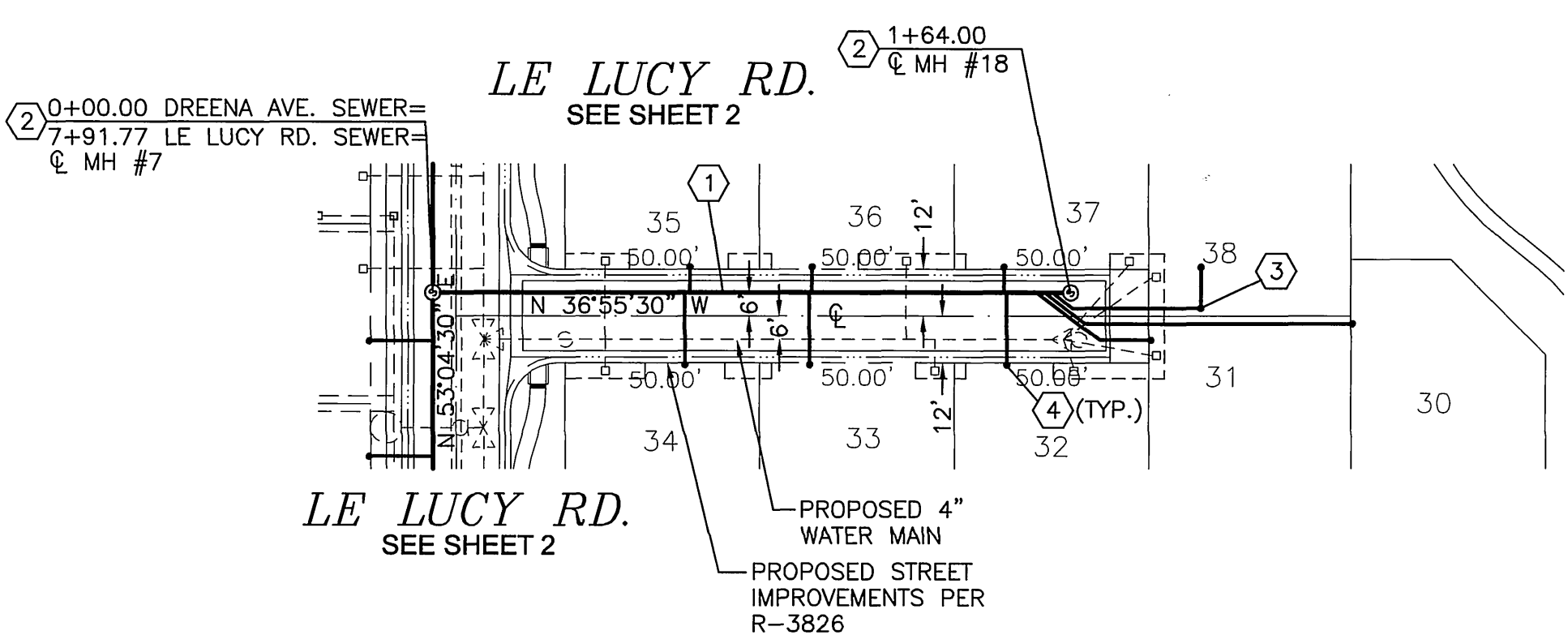


PROFILE SCALE
HORIZ. 1" = 40'
VERT. 1" = 4'



CONSTRUCTION NOTES	
No.	DESCRIPTION
①	CONSTRUCT 8" VCP OR PVC SEWER MAIN (TYPICAL ALL MAINS), PIPE BEDDING CASE 1 PER CITY STD DWG No. 452
②	INSTALL CONC MANHOLE PER CITY SEWER STD DWG No. 500
③	INSTALL SEWER CLEAN OUT PER CITY SEWER STD DWG No. 560
④	CONSTRUCT 4" SEWER LATERAL WITH CLEAN OUT @ P.L. PER CITY STD DWG No. 562A PIPE BEDDING CASE 1 PER CITY STD DWG No. 452

BENCHMARK
CITY OF RIVERSIDE BENCH MARK "MARTINEK" BRASS DISK IN CONCRETE ON A SMALL RAISED EARTH MOUND ON THE WESTERLY SIDE OF CHICAGO AVENUE AT LE CONTE AVENUE. POINT IS 35 FEET SOUTHERLY OF A POLE # 19037 J, AND 35.4 FEET WESTERLY OF THE EXISTING BERM OF CHICAGO AVENUE.
ELEVATION: 984.90 (NGVD 29)



DREENA AVE.

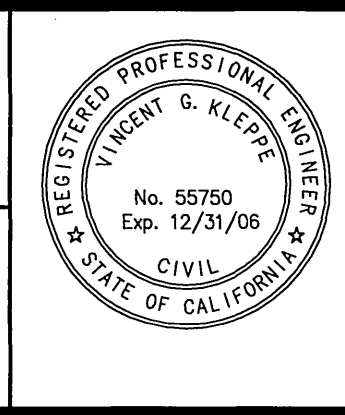
ARTFULL AVE.

VERONICA LN.

PW04-0861

Underground Service Alert
Cell: TOLL FREE
1-800-227-2800
DIAL BEFORE YOU DIG
TWO WORKING DAYS BEFORE YOU DIG
A PUBLIC SERVICE BY UNDERGROUND SERVICE ALERT

Prepared Under The Supervision Of:
Vincent G. Kleppe
Date: 6-6-05
REGISTERED CIVIL ENGINEER NO. 55750
REGISTRATION EXPIRES: 12/31/08



CREEKSIDE TERRACE
310 N. COTA ST., SUITE 1, CORONA, CA 92680
PHONE: (951) 737-4406 • FAX: (951) 737-4407 • tps@the-prizm-group.com

REVISIONS:	REMARK	DESCRIPTION	APR.	DATE:

CITY OF RIVERSIDE
WATER DEPT
M. McLeod 6/17/05
APPROVED BY

CITY OF RIVERSIDE, CALIFORNIA
PUBLIC WORKS DEPARTMENT
Approved By: *[Signature]* BY: *[Signature]* Date: *[Date]*
PRINCIPAL ENG.
PARKS DEPARTMENT
TRAFFIC DIVISION
APPROVED BY
[Signature]
CITY ENGINEER
DATE *[Date]*

TRACT 31671
SEWER IMPROVEMENT PLANS
DREENA AVE., ARTFULL AVE., & VERONICA LN.
File name: P:\TPG\02\02-0401\SS\02-0401SS05.dwg

S-1871
Sheet 5 OF 5 SHEETS
FILE NO. 02-0401