

SEWER IMPROVEMENT PLAN

STRONG STREET SEWER LINE "A"

GENERAL NOTES:

- NO PERSON SHALL PERFORM ANY CONSTRUCTION ACTIVITY OR INSTALL ANY OBJECTS WITHIN THE PUBLIC RIGHT-OF-WAY OR EASEMENTS OF THE CITY OF RIVERSIDE WITHOUT A VALID CONSTRUCTION PERMIT, OR A STREET OPENING PERMIT OR AN ENCROACHMENT PERMIT ISSUED BY THE CITY'S PUBLIC WORKS DEPARTMENT.
- IT SHALL BE THE RESPONSIBILITY OF THE CONTRACTOR TO CLEAR THE RIGHT OF WAY IN ACCORDANCE WITH THE PROVISIONS OF LAW AS IT AFFECTS EACH UTILITY INCLUDING IRRIGATION LINES AND APPURTENANCES AND AT NO COST TO THE CITY.
- CONSTRUCTION SHALL BE IN ACCORDANCE WITH THE CITY OF RIVERSIDE DEPARTMENT OF PUBLIC WORKS, STANDARD DRAWINGS, ITS SUPPLEMENTAL NOTES AND THE STANDARD SPECIFICATIONS FOR PUBLIC WORKS CONSTRUCTION, CURRENT EDITION.
- THE PRIVATE ENGINEER SIGNING THESE PLANS IS RESPONSIBLE FOR ASSURING THE ACCURACY AND ACCEPTABILITY OF THE WORK HEREON. IN THE EVENT OF DISCREPANCIES ARISING DURING CONSTRUCTION, THE PRIVATE ENGINEER SHALL BE RESPONSIBLE FOR DETERMINING AN ACCEPTABLE SOLUTION AND REVISING THE PLANS FOR APPROVAL BY THE CITY.
- THE DEVELOPER SHALL BE RESPONSIBLE FOR PRESERVING OR REESTABLISHING AND REFERENCING SURVEY MONUMENTS DESTROYED, DISTURBED OR BURIED AS A RESULT OF CONSTRUCTION SHOWN HEREON.
- ALL FLAGGED ELEVATIONS SHALL BE STAKED IN THE FIELD BY PRIVATE ENGINEER.
- THE CONTRACTOR SHALL CALL IN A LOCATION REQUEST TO UNDERGROUND SERVICE ALERT (USA), PHONE # 1-800-227-2600, TWO WORKING DAYS BEFORE DIGGING; NO CONSTRUCTION PERMIT WILL BE ISSUED BY THE PUBLIC WORKS DEPARTMENT INVOLVING EXCAVATION FOR UNDERGROUND FACILITIES UNLESS THE APPLICANT HAS BEEN PROVIDED AN INQUIRY IDENTIFICATION NUMBER BY U.S.A..
- DEVELOPER/CONTRACTOR TO GIVE CITY WATER DIVISION FIVE (5) WORKING DAYS WRITTEN NOTICE PRIOR TO START OF CONSTRUCTION AND TO ALLOW CITY TEN (10) WORKING DAYS FOR COMPLETION OF WORK. (909) 351-6150.
- THE CONTRACTOR SHALL COORDINATE TRENCHING FOR CABLE TELEVISION WITH OTHER TRENCHING WITHIN THE SUBDIVISION.
- QUANTITIES SHOWN ARE FOR INFORMATION ONLY AND THE CITY OF RIVERSIDE IS NOT RESPONSIBLE FOR THEIR ACCURACY.
- CONTRACTOR IS TO VERIFY EXISTING SEWER ELEVATION PRIOR TO CONSTRUCTION.
- LOCATION OF LATERALS TO BE DETERMINED IN THE FIELD AT THE DIRECTION OF THE OWNER. AVOID CONFLICT WITH PROPOSED AND/OR EXISTING FACILITIES.
- NO FINISHED FLOOR ELEVATION SHALL BE LESS THAN 6" ABOVE THE UPPER MANHOLE RIM ELEVATION OF THE SEWER LINE SEGMENT BEING CONNECTED TO, WITHOUT HAVING A PROPER BACKWATER VALVE INSTALLED IN THE LATERAL.
- A PLUG SHALL BE INSTALLED AND WILL REMAIN IN PLACE WHERE THE NEW SEWER CONNECTS WITH THE EXISTING SEWER UNTIL THE NEW SEWER IS ACCEPTED BY THE CITY.
- THE SEWER CONTRACTOR SHALL ADJUST MANHOLES TO FINAL GRADE AFTER PAVING IS COMPLETED.

IF THIS PROJECT IS STAKED BY A SURVEY CREW THAT IS NOT UNDER THE DIRECT SUPERVISION OF THE SIGNATORY ENGINEER, THE SIGNATORY ENGINEER IS NO LONGER THE ENGINEER OF RECORD AND IS NOT RESPONSIBLE FOR THE FINAL OUTCOME OF THE PROJECT. THE SIGNATORY ENGINEER IS NOT RESPONSIBLE FOR ANY ERRORS AND OMISSIONS THAT COULD HAVE BEEN CORRECTED IF THE PROJECT HAD BEEN STAKED BY A SURVEY CREW UNDER HIS DIRECT SUPERVISION.

UNAUTHORIZED CHANGES AND USES

CAUTION: THE ENGINEER PREPARING THESE PLANS WILL NOT BE RESPONSIBLE FOR, OR LIABLE FOR, UNAUTHORIZED CHANGES TO OR USES OF THESE PLANS. ALL CHANGES TO THE PLANS MUST BE IN WRITING AND MUST BE APPROVED BY THE PREPARER OF THESE PLANS.

NOTICE TO CONTRACTOR:

THE EXISTENCE AND LOCATION OF ANY UNDERGROUND UTILITY PIPES OR STRUCTURES SHOWN ON THESE PLANS ARE OBTAINED BY A SEARCH OF THE AVAILABLE RECORDS. TO THE BEST OF OUR KNOWLEDGE, THERE ARE NO EXISTING UTILITIES EXCEPT THOSE SHOWN ON THESE PLANS.

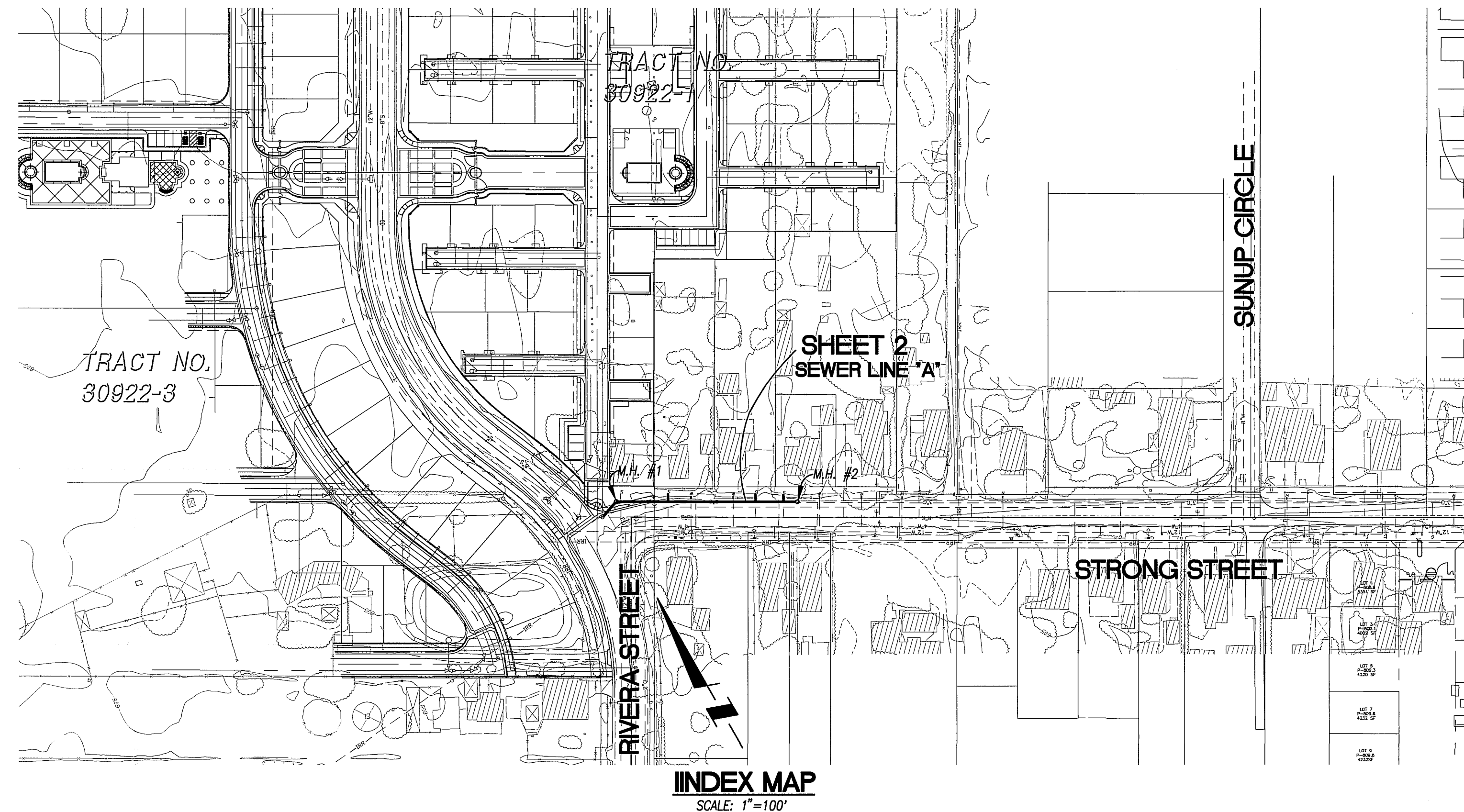
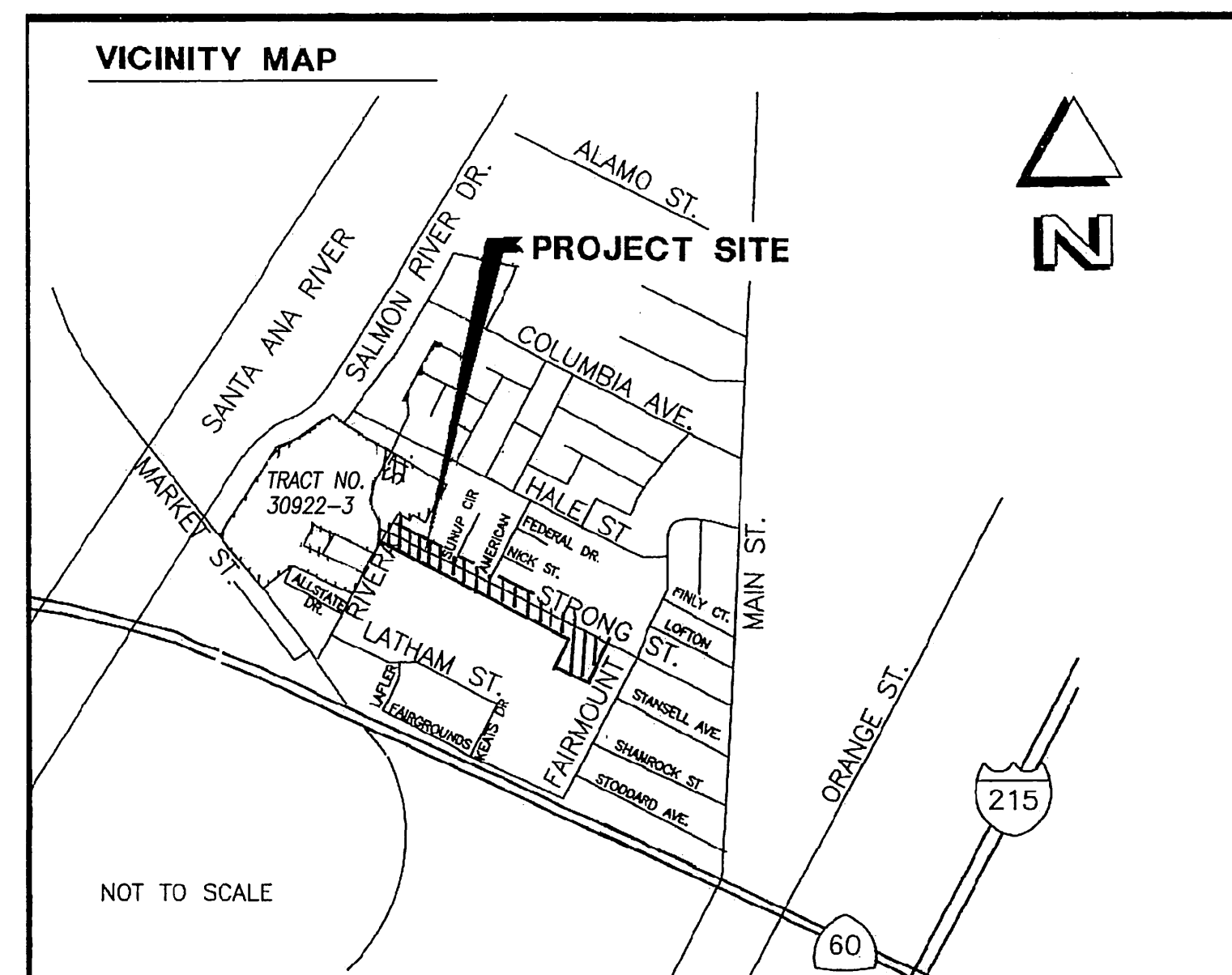
THE CONTRACTOR IS REQUIRED TO TAKE DUE PRECAUTIONARY MEASURES TO PROTECT THE UTILITY LINES SHOWN AND ANY OTHER LINES NOT OF RECORD OR NOT SHOWN ON THESE PLANS.

CALL UNDERGROUND SERVICE ALERT (USA) 1-800-227-2600 AT LEAST 48 HOURS PRIOR TO EXCAVATION.

THE QUANTITY ESTIMATE SHOWN HEREON IS FOR THE USE OF GOVERNING AGENCIES IN DETERMINING BOND AMOUNTS AND/OR FEES AND IS NOT TO BE USED FOR BID PURPOSES.

UTILITY VERIFICATION

CONTRACTOR SHALL VERIFY LOCATION (VERTICAL AND HORIZONTAL) OF ALL POINTS OF CONNECTION TO EXISTING FACILITIES. IF LOCATIONS DIFFER THAN THOSE SHOWN ON THESE CONSTRUCTION DRAWINGS, CONTRACTOR SHALL NOTIFY THE SIGNATORY ENGINEER IN WRITING IN ORDER TO DETERMINE CORRECTIVE ACTION TO BE TAKEN.



SEWER CONSTRUCTION NOTES

NO.	DESCRIPTION	QUANTITY	UNIT
1	CONSTRUCT 8" VCP OR PVC SEWER MAIN AND PIPE BEDDING PER C.O.R. STD. DWG. NO. 452	212	L.F.
2	INSTALL CONCRETE MANHOLE PER C.O.R. STD. DWG. NO. 500	2	EA.
3	CONSTRUCT 4" SEWER LATERAL WITH CLEANOUT AT P.L. PER C.O.R. STD. DWG. NO. 562A AND BEDDING CASE 1 PER C.O.R. STD. DWG. NO. 452	24	L.F. / 3 EA.
4	CAP EXISTING SEWER LATERAL. REMOVE INTERFERING PORTION OF SEWER LATERAL	4	EA.
5	RELOCATE EXISTING GAS MAIN PER LIMITS ON PLAN	220	L.F.

KEY NOTES

[A] — PROTECT IN PLACE

LEGEND:

PROPOSED 8" V.C.P. SEWER MAIN	
PROPOSED SEWER LATERAL WITH CLEAN OUT	
PROPOSED SEWER MANHOLE	
EXISTING SEWER MAIN	

BENCHMARK

CITY OF RIVERSIDE BENCHMARK GPS-51: 2-1/2" BRASS DISK STAMPED "CITY OF RIVERSIDE GPS STATION 51 1991 CADME" SET IN THE TOP OF A CATCH BASIN ALONG THE NORTHERLY CURB OF COLUMBIA AVENUE, 4 FEET EAST OF THE BCR OF THE NORTHEAST OF MAIN STREET AT COLUMBIA AVE.
ELEV.: 813.66

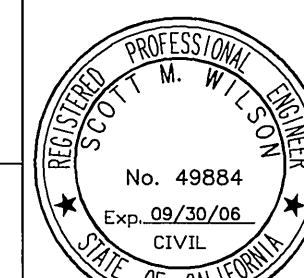
Underground Service Alert

Call: TOLL FREE
1-800-227-2600
DIAL BEFORE YOU DIG

TWO WORKING DAYS BEFORE YOU DIG
A PUBLIC SERVICE BY UNDERGROUND SERVICE ALERT

CITY OF RIVERSIDE WATER DEPT.

APPROVED BY: *[Signature]*
DATE: 1/14/05



WILSON MIKAMI CORPORATION
3 PETERS CANYON, SUITE 110
IRVINE, CA 92606
T: 949-679-0090

CITY OF RIVERSIDE BUSINESS TAX CERTIFICATE # 116925, EXPIRES 07/22/05

PREPARED UNDER THE SUPERVISION OF:

[Signature]
SCOTT M. WILSON
REGISTERED CIVIL ENGINEER NO. 49884
REGISTRATION EXPIRES: 09/30/06

MARK	REVISIONS	APR. DATE:

CITY OF RIVERSIDE, CALIFORNIA
PUBLIC WORKS DEPARTMENT

APPROVED BY:	BY:	DATE:	APPROVED BY:
PRINCIPAL ENG.	A	2/9/05	<i>[Signature]</i>
TRAFFIC DIVISION			CITY ENGINEER
SEWER SERVICES	KEJ	1/5/05	DATE: 1/14/05
STREET SERVICES			

STRONG STREET SEWER PLANS

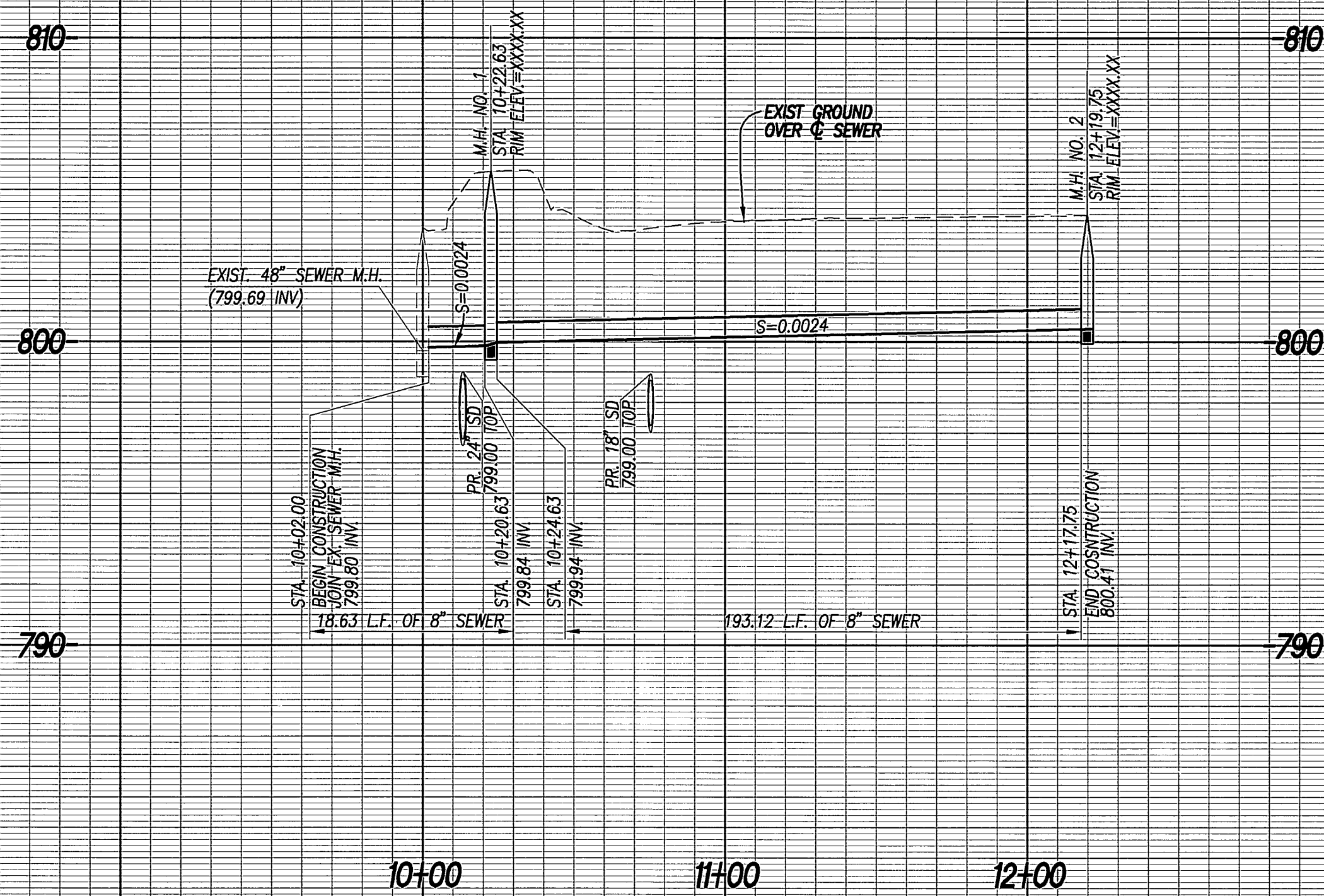
SEWER LINE "A"
RIVERA STREET TO SPRINGBROOK CHANNEL
SCALE: AS SHOWN

DRAWING NUMBER

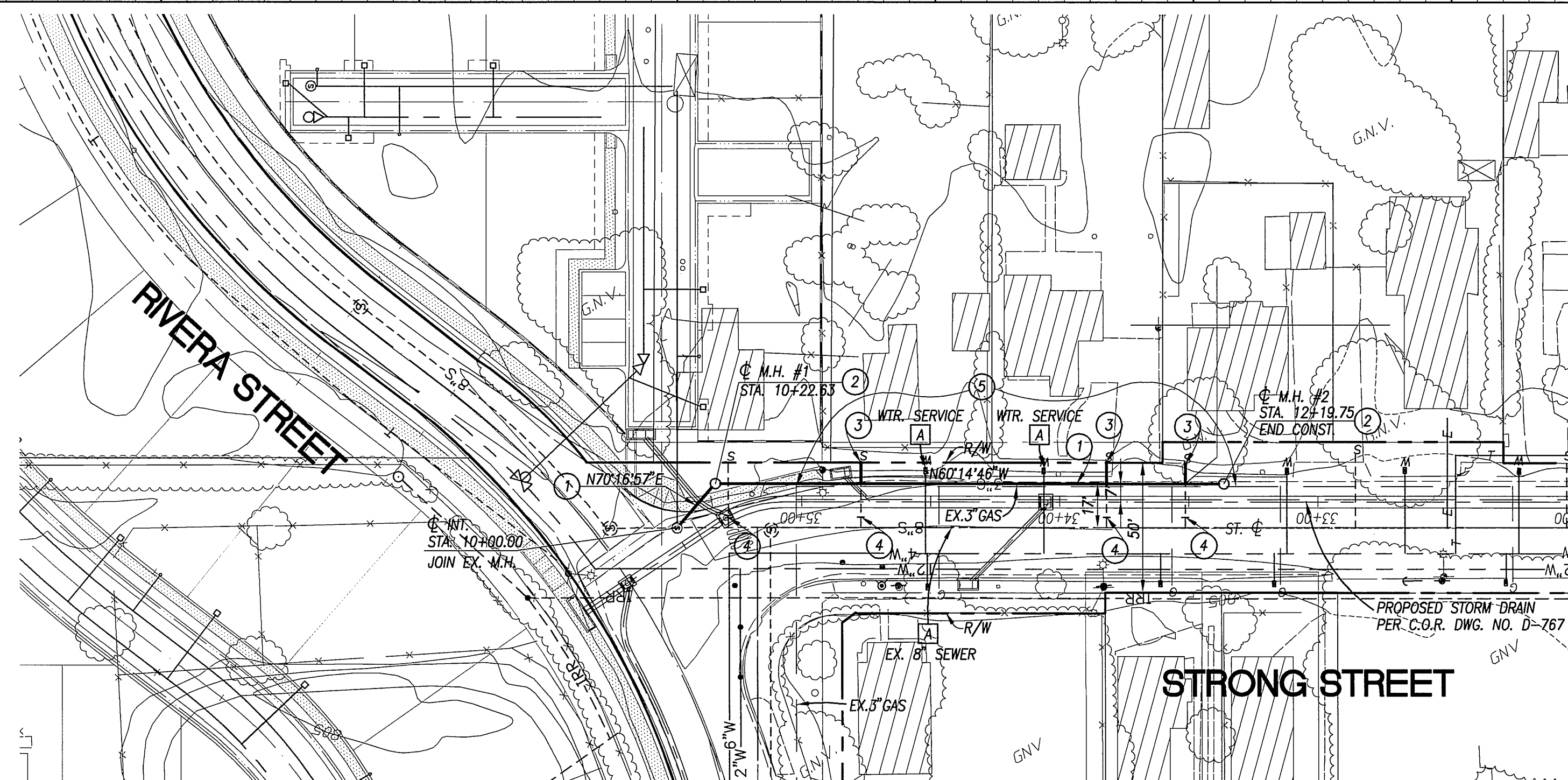
S-1878

SHEET 1 OF 2

PW04-0629



PROFILE
 HORIZ. 1" = 40'
 VERT. 1" = 4'



LINE "A"

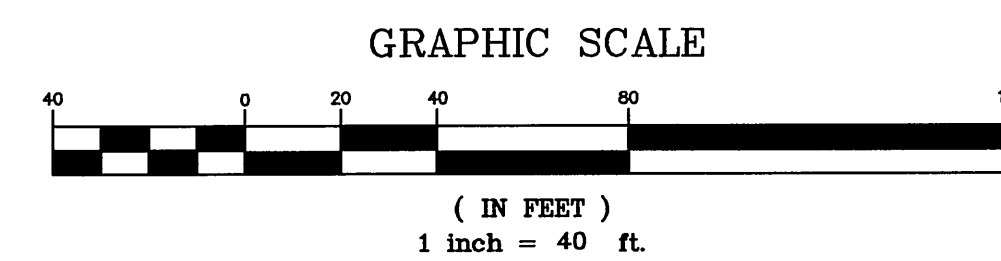
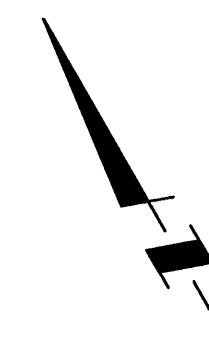
1. CONTRACTOR SHALL POTHOLE AND VERIFY THE EXISTING ELEVATION OF UTILITIES NOTED BY "FIELD VERIFY" PRIOR TO CONSTRUCTION. CONTRACTOR SHALL NOTIFY THE ENGINEER OF ANY DISCREPANCY PRIOR TO CONSTRUCTION.
2. CONTRACTOR SHALL REFER TO PLAN VIEW FOR APPROXIMATE LOCATION OF UTILITY LATERALS
3. CONTRACTOR SHALL PROTECT EXISTING UTILITIES IN PLACE EXCEPT WERE SPECIFIED TO BE REMOVED OR RELOCATED PER PLAN.

SEWER CONSTRUCTION NOTES

1. CONSTRUCT 8" VCP OR PVC SEWER MAIN AND PIPE BEDDING PER C.O.R. STD. DWG. NO. 452
2. INSTALL CONCRETE MANHOLE PER C.O.R. STD. DWG. NO. 500
3. CONSTRUCT 4" SEWER LATERAL WITH CLEANOUT AT P.L. PER C.O.R. STD. DWG. NO. 562A AND BEDDING CASE 1 PER C.O.R. STD. DWG. NO. 452
4. CAP EXISTING SEWER LATERAL. REMOVE INTERFERING PORTION OF SEWER LATERAL.
5. SOUTHERN CALIFORNIA GAS COMPANY TO RELOCATE EXISTING GAS MAIN PER LIMITS ON PLAN

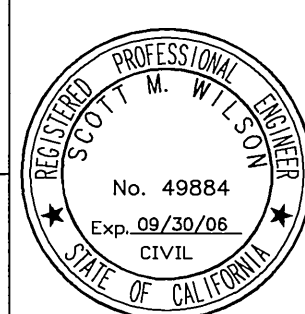
KEY NOTES

[A] - PROTECT IN PLACE



Underground Service Alert
 Call: TOLL FREE
 1-800-227-2600
 DIAL BEFORE YOU DIG
 TWO WORKING DAYS BEFORE YOU DIG
 A PUBLIC SERVICE BY UNDERGROUND SERVICE ALERT

CITY OF RIVERSIDE WATER DEPT.
 APPROVED BY: *[Signature]* 1/14/05



WILSON MIKAMI CORPORATION
 3 PETERS CANYON, SUITE 110
 IRVINE, CA 92606
 T: 949-679-0090
 CITY OF RIVERSIDE BUSINESS TAX CERTIFICATE # 116925, EXPIRES 07/22/05
 PREPARED UNDER THE SUPERVISION OF:
[Signature]
 SCOTT M. WILSON
 REGISTERED CIVIL ENGINEER NO. 49884
 REGISTRATION EXPIRES: 09/30/06
 Date: 1/14/05

MARK	REVISIONS	APR.	DATE:

DESIGNED BY: _____ CHECKED BY: _____

**CITY OF RIVERSIDE, CALIFORNIA
 PUBLIC WORKS DEPARTMENT**

APPROVED BY:	BY:	DATE:	APPROVED BY:
PRINCIPAL ENG.	<i>[Signature]</i>	1/15/05	<i>[Signature]</i>
TRAFFIC DIVISION			
SEWER SERVICES			
STREET SERVICES			

DATE: 1/14/05

STRONG STREET SEWER PLANS

SEWER LINE "A"

RIVERA STREET TO SPRINGBROOK CHANNEL

SCALE: AS SHOWN

DRAWING NUMBER
S-1878

SHEET **2** OF **2**

PW04-0629

S:\1002\DWG\N\PCS\1005.dwg 1/14/2005 11:24:49 AM PST