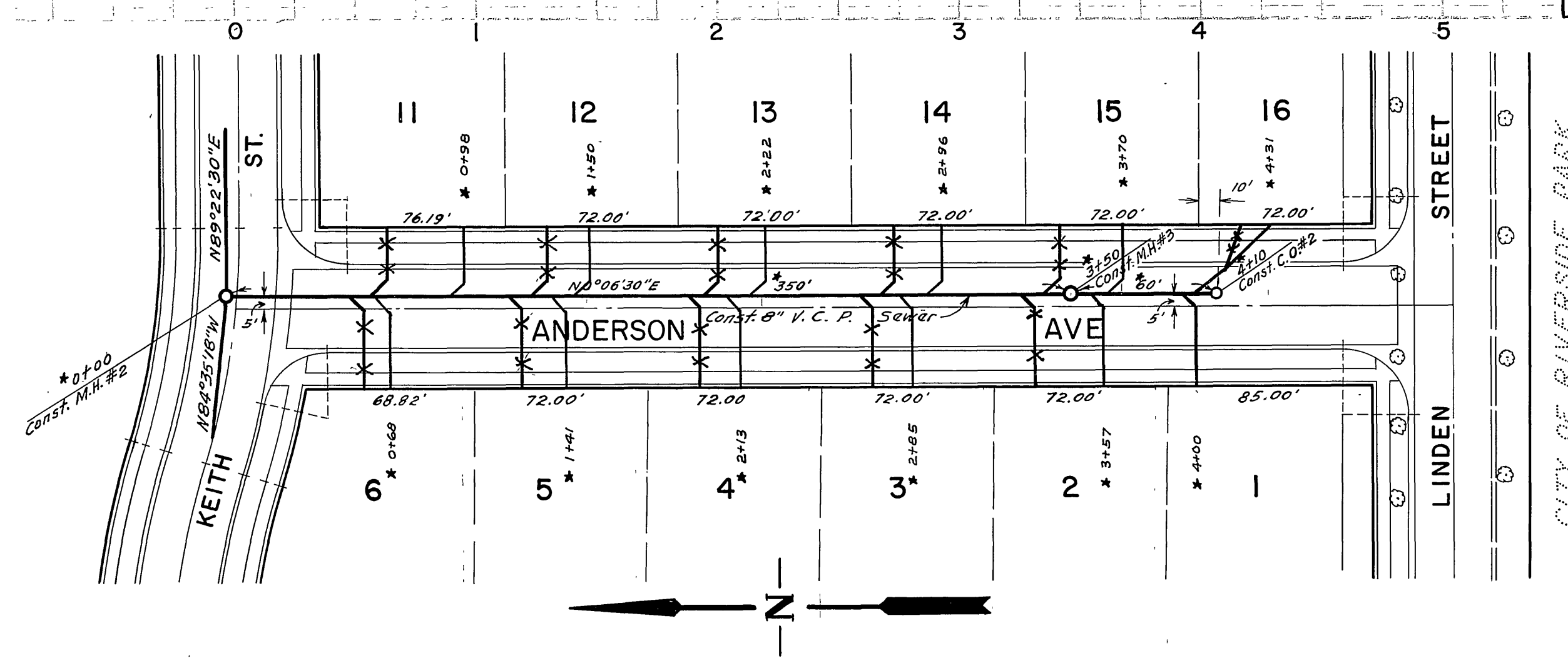
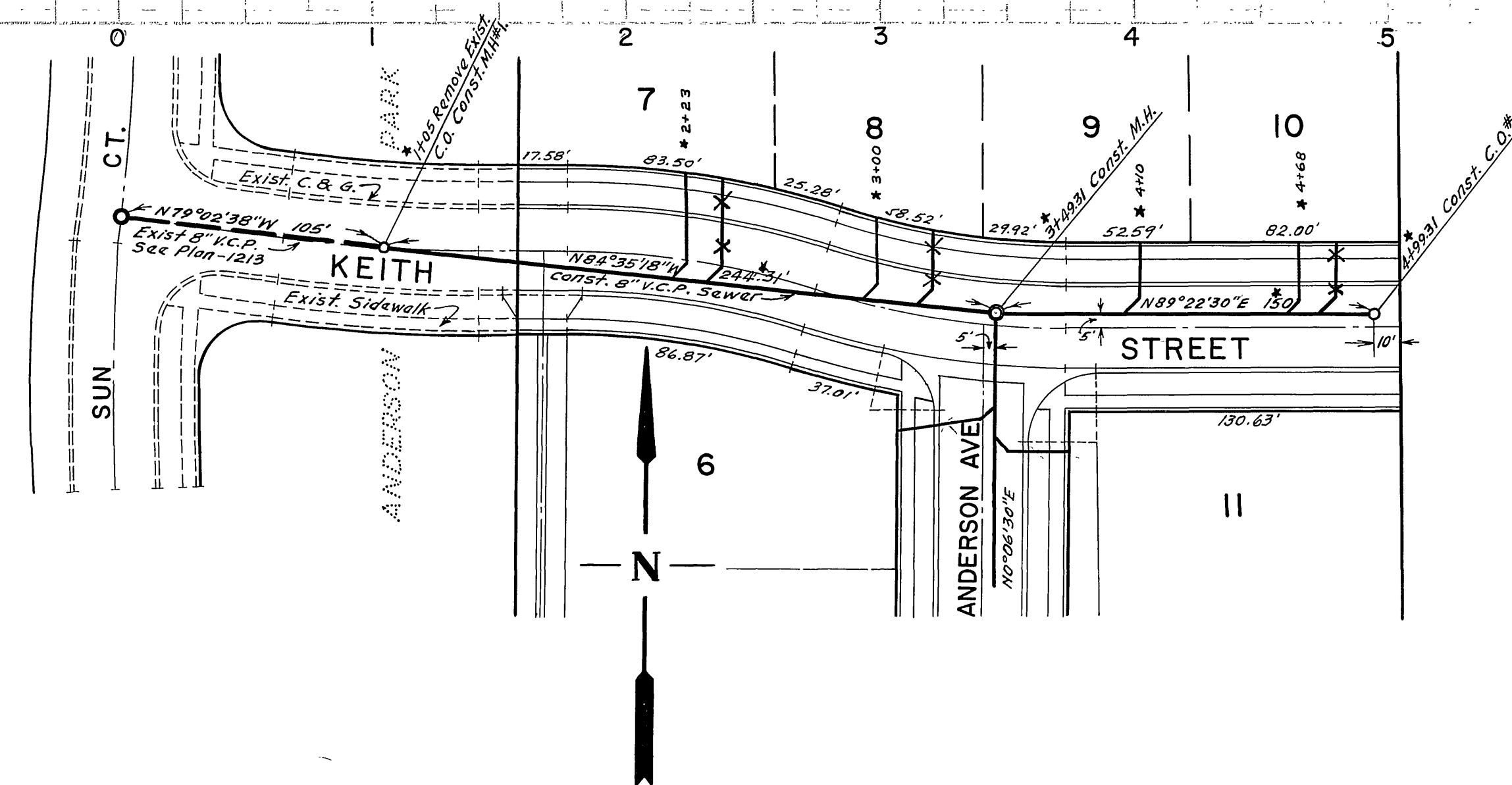


B.M. SPIKE & LEAD IN NORTH CURB  
LINDEN ST OPPOSITE CATCH  
BASIN ON OTTAWA AVE  
ELEV=925.38



ENGINEERS ESTIMATE OF QUANTITIES	
8" V. C. P.	804.31 lf.
No. STD. 500 MAN HOLES	3
No. STD. 560 CLEANOUTS	2
No. HOUSE CONNECTIONS	15

NOTE:  
Exact Location of House Connections to be  
Determined in the Field

**RIVERSIDE ENGINEERING CO. INC.**  
RIVERSIDE, CALIFORNIA  
APPROVED *George D. Crowley* DATE 6-9-59

**CITY OF RIVERSIDE, CALIFORNIA**  
DEPARTMENT OF PUBLIC WORKS

SEWER PLAN & PROFILE  
KEITH STREET, ANDERSON AVE.

RANCHO PARK TRACT  
HORZ 1"=50' VERT 1"=5'

APPROVED *[Signature]*  
Director of Public Works

Date *July 14, 1959* Sheet **S-188** of 1