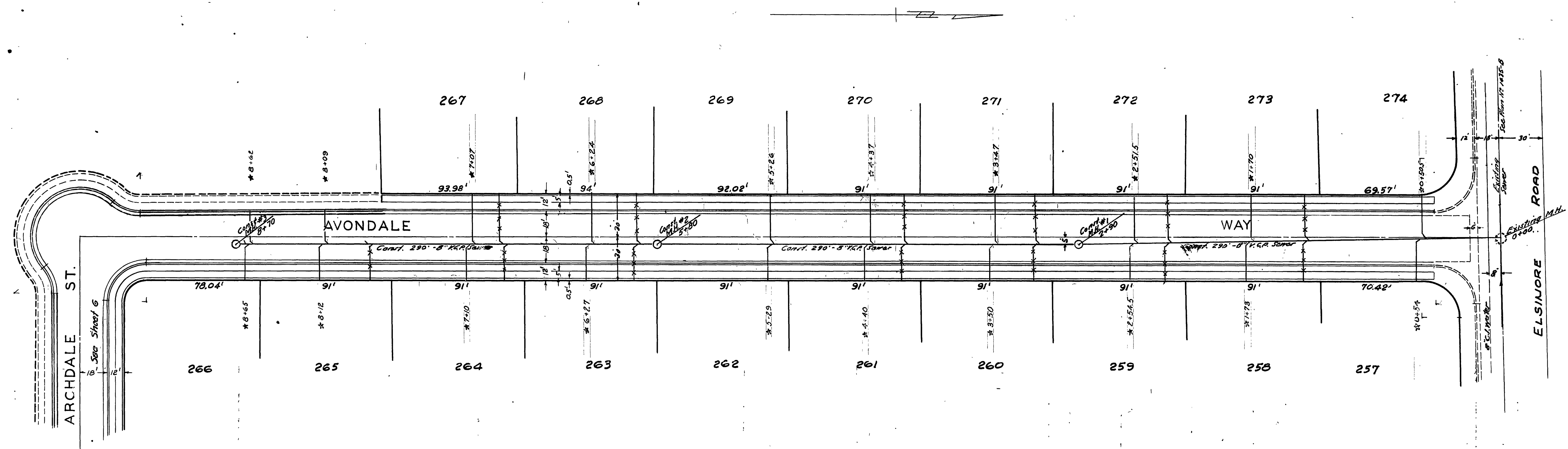
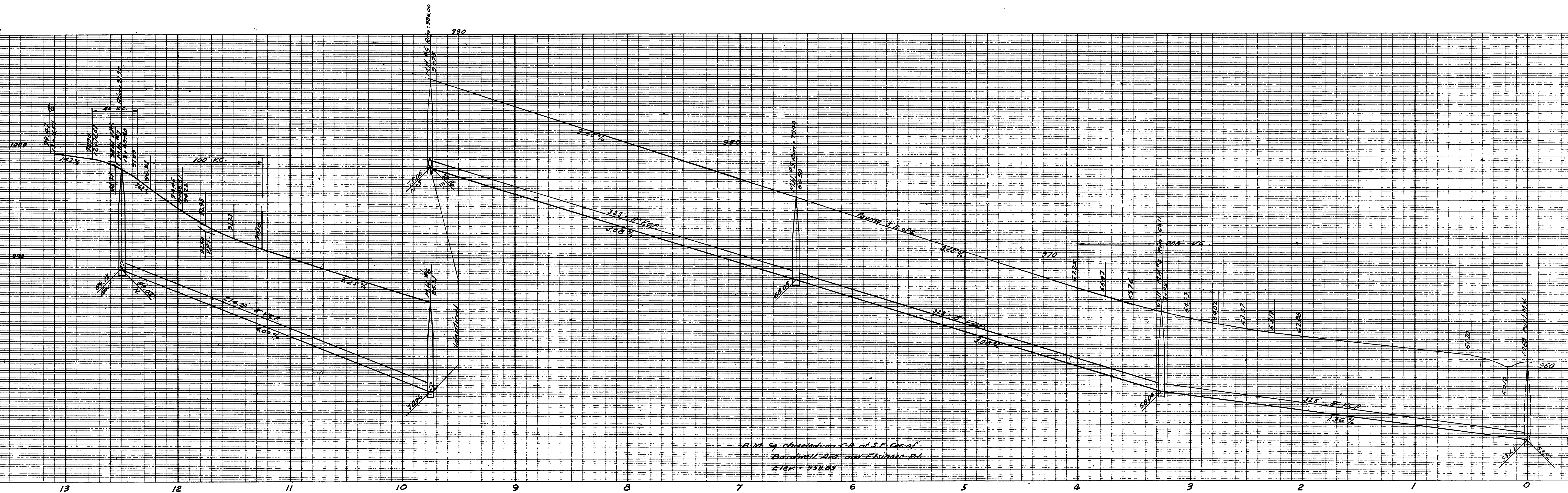


B.M. by chiseled on C.B. at SE. Cor. of
Bardwell Ave. and Elmore Rd.
Elev. = 958.89

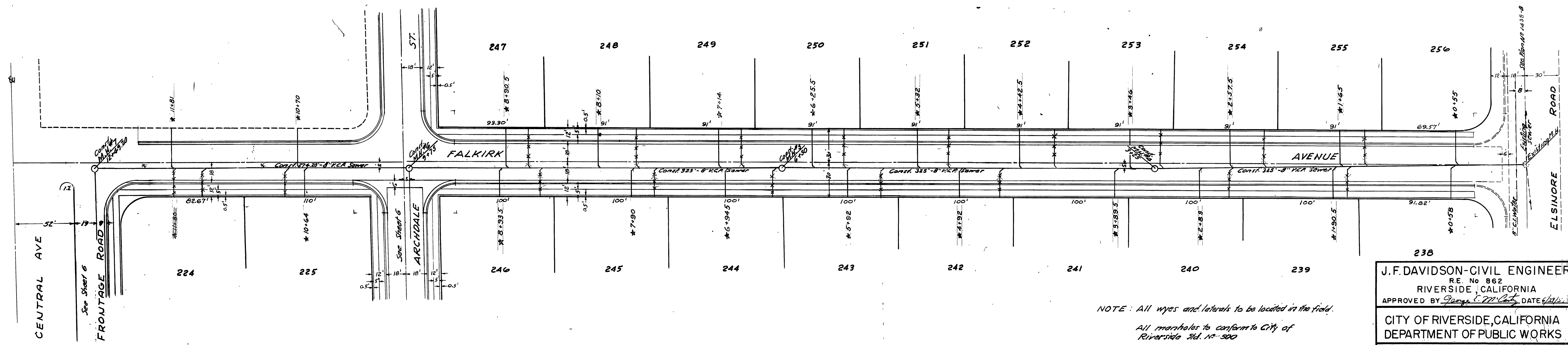
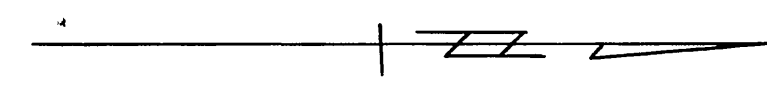
NOTE: All wyes and laterals to be located in the field.
All manholes to conform to City of
Riverside Std. No. 500



J.F. DAVIDSON-CIVIL ENGINEER R.E. No. 862 RIVERSIDE, CALIFORNIA	
APPROVED BY: <i>George E. McCarty</i> DATE: 6/29/52	
CITY OF RIVERSIDE, CALIFORNIA DEPARTMENT OF PUBLIC WORKS	
SEWER PLAN & PROFILE AVONDALE WAY	
VICTORIA GROVES - UNIT No. 6	
HORIZ. SCALE 1" = 40'	VERT. SCALE 1" = 4'
APPROVED BY: <i>W. J. Davidson</i> Director of Public Works	NO. S-189
DATE: July 6, 1952	SHEET 1 OF 1



B.M. Sq. situated on C.D. of S.E. Canal
 Bancroft Ave and Elsinore Rd
 Elev = 958.03



NOTE: All wyes and laterals to be located in the field.
 All manholes to conform to City of
 Riverside Std. No. 300

J.F. DAVIDSON - CIVIL ENGINEER
 RE. No. 862
 RIVERSIDE, CALIFORNIA
 APPROVED BY *George C. M. [Signature]* DATE *July 6, 1919*

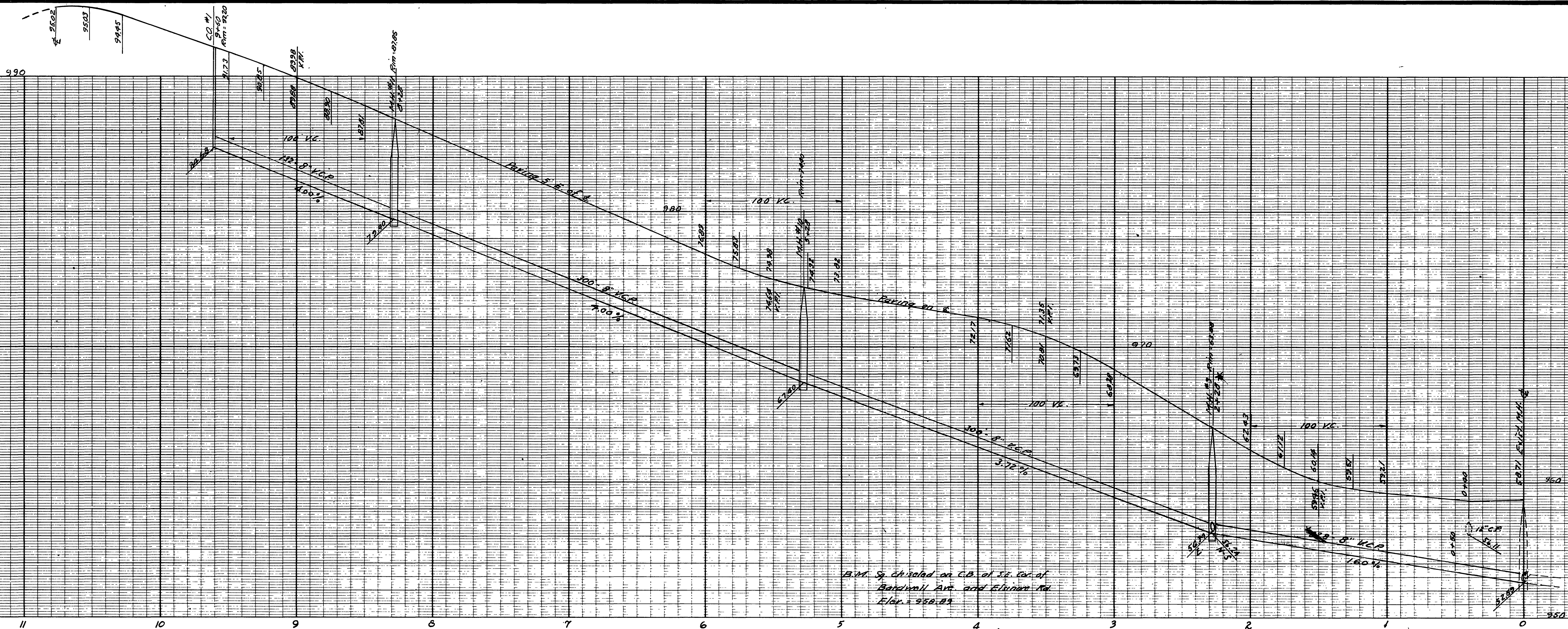
CITY OF RIVERSIDE, CALIFORNIA
 DEPARTMENT OF PUBLIC WORKS

SEWER PLAN & PROFILE
 FALKIRK AVENUE

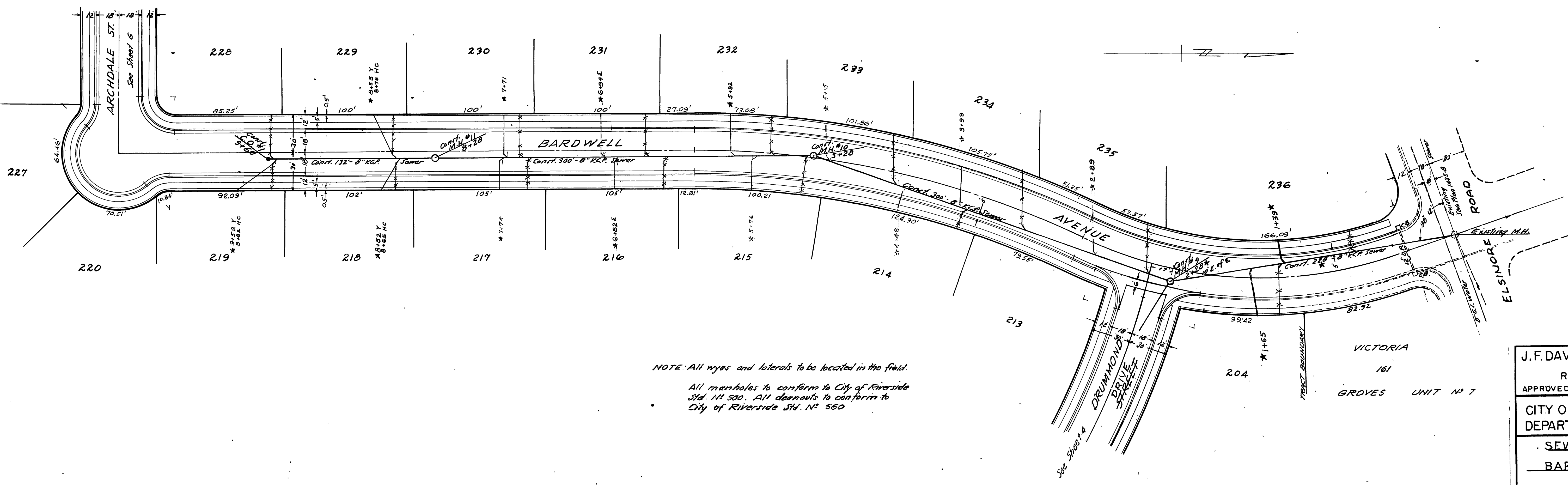
VICTORIA GROVES - UNIT No. 6
 HORIZ. SCALE 1" = 40' VERT. SCALE 1" = 4'

APPROVED BY *[Signature]*
 Director of Public Works
 DATE *July 6, 1919*

NO. **S-189**
 SHEET 2 OF 7

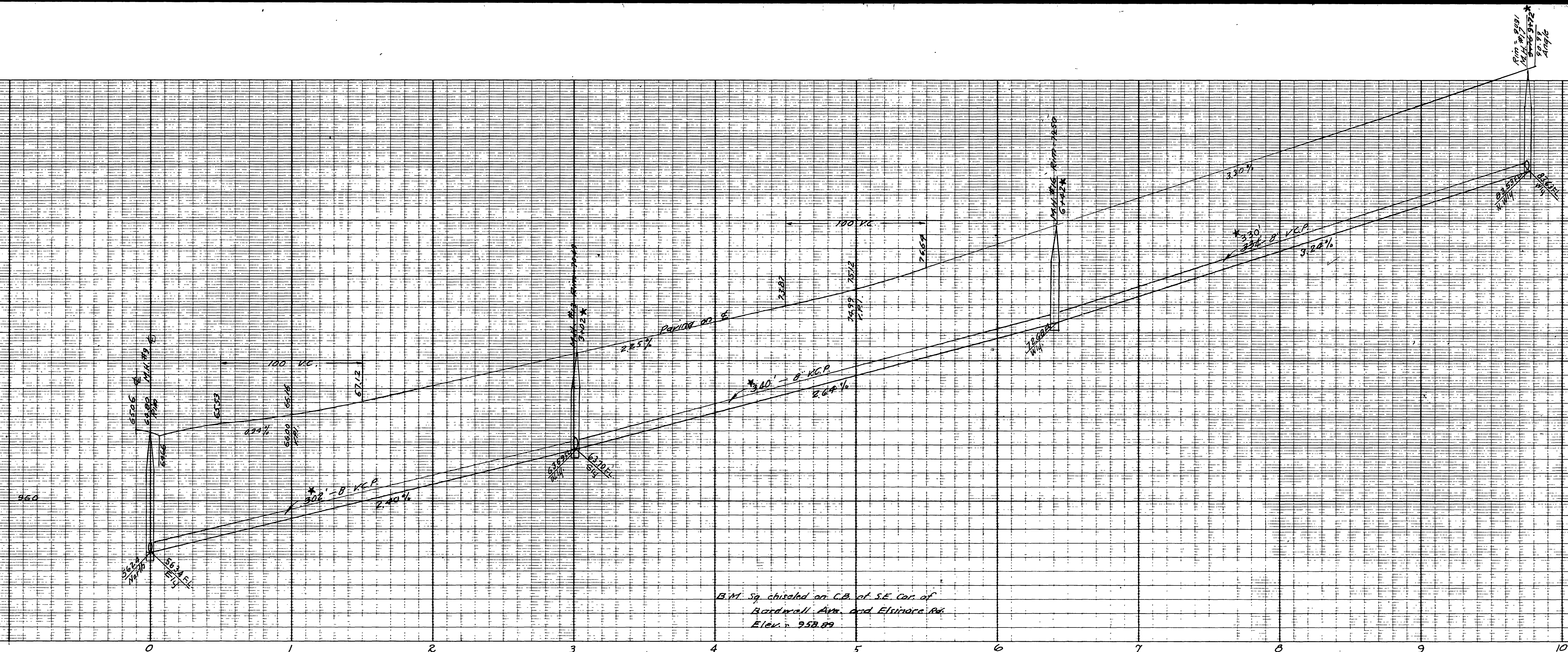


NOTE: Check at 0+50 for possible existing line before trenching first 50 ft.

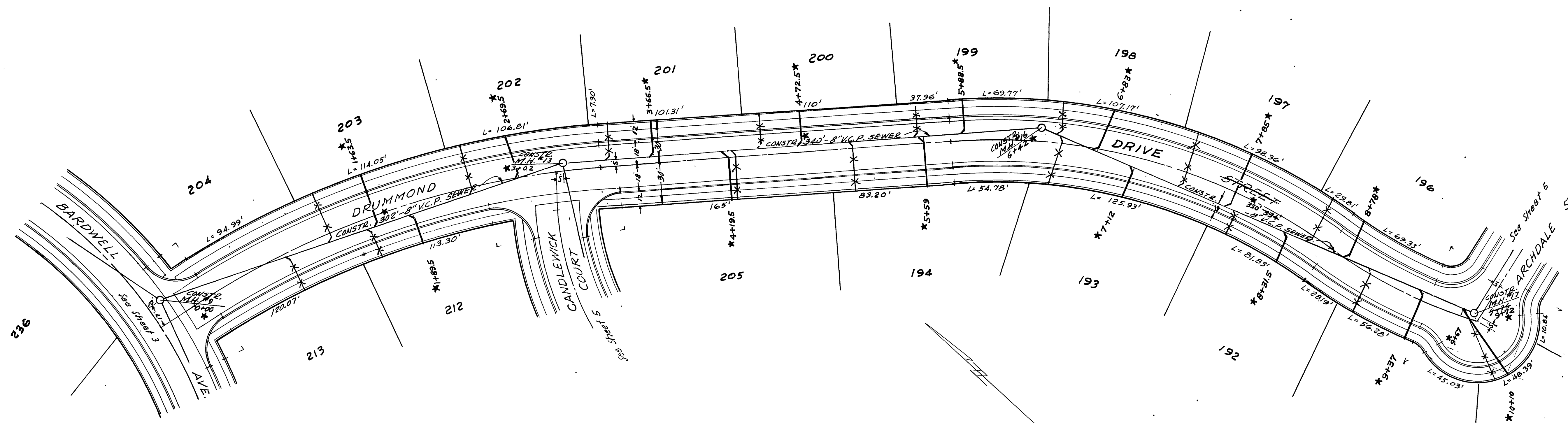


NOTE: All wyes and laterals to be located in the field.
All manholes to conform to City of Riverside Std. No. 500. All cleanouts to conform to City of Riverside Std. No. 560

J.F. DAVIDSON - CIVIL ENGINEER R.E. No. 862 RIVERSIDE, CALIFORNIA APPROVED BY: <i>George E. Martin</i> DATE: <i>July 6, 1957</i>	
CITY OF RIVERSIDE, CALIFORNIA DEPARTMENT OF PUBLIC WORKS	
SEWER PLAN & PROFILE BARDWELL AVENUE	
VICTORIA GROVES - UNIT NO. 6 HORIZ. SCALE 1" = 40' VERT. SCALE 1" = 4'	
APPROVED BY: <i>George E. Martin</i> Director of Public Works DATE: <i>July 6, 1957</i>	NO. S-189 SHEET 3 OF 7



B.M. sq. chiseled on C.B. of S.E. Cor. of
Bardwell Ave. and Elvirace Rd.
Elev. 958.89



NOTE: All wyes and laterals to be located in the field.
All manholes to conform to City of
Riverside Std. No. 500

J.F. DAVIDSON-CIVIL ENGINEER
R.E. No 862
RIVERSIDE, CALIFORNIA
APPROVED BY *George E. M. [Signature]* DATE 6/17/52

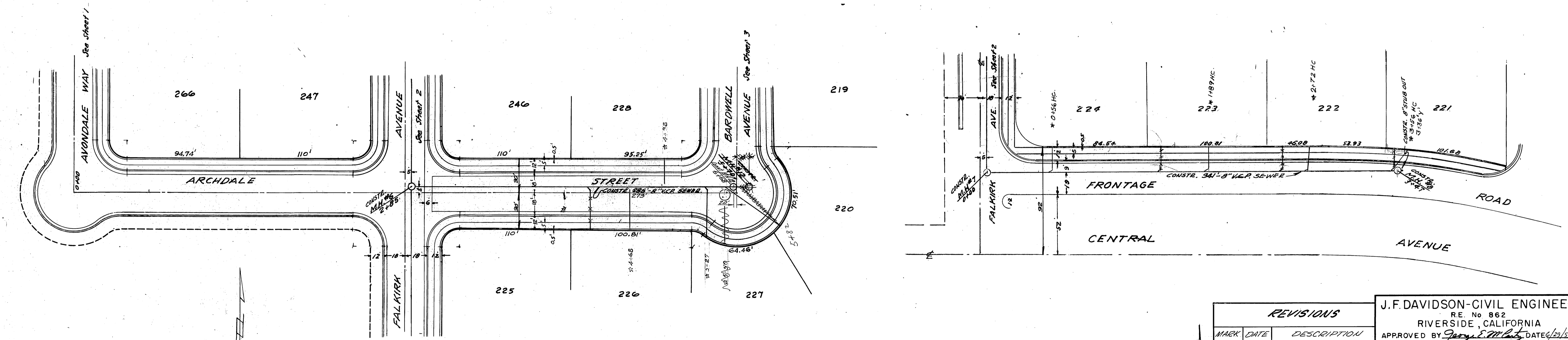
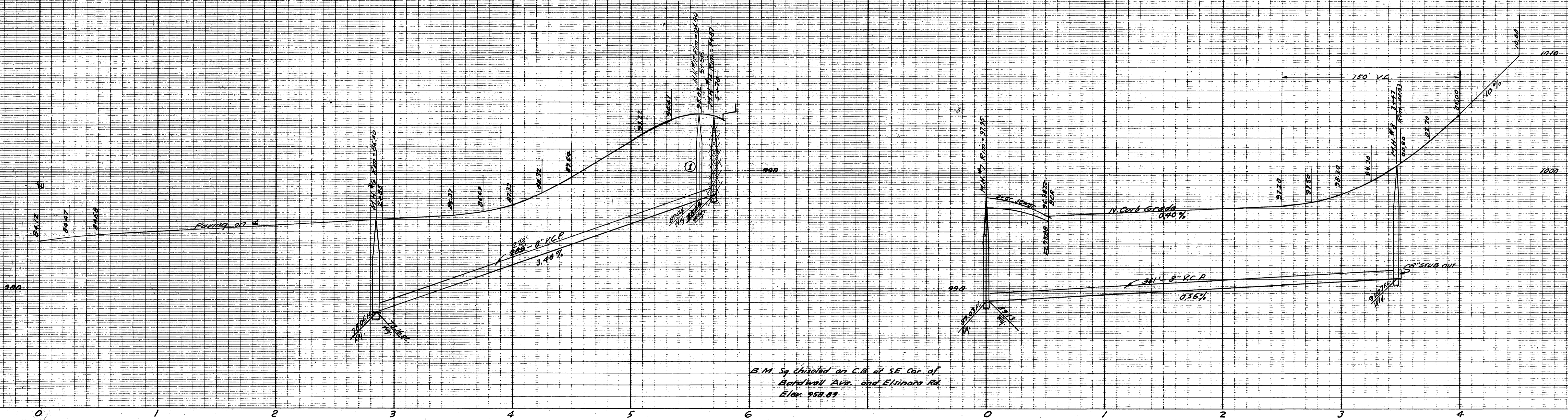
CITY OF RIVERSIDE, CALIFORNIA
DEPARTMENT OF PUBLIC WORKS

SEWER PLAN & PROFILE
DRUMMOND DRIVE
STREET

VICTORIA GROVES - UNIT No 6
HORIZ. SCALE 1" = 40' VERT. SCALE 1" = 4'

APPROVED BY *[Signature]*
Director of Public Works
DATE *July 6, 1952*
NO. S-189
SHEET 4 OF 7

* = "As Built" 11-30-59 H.B.M.

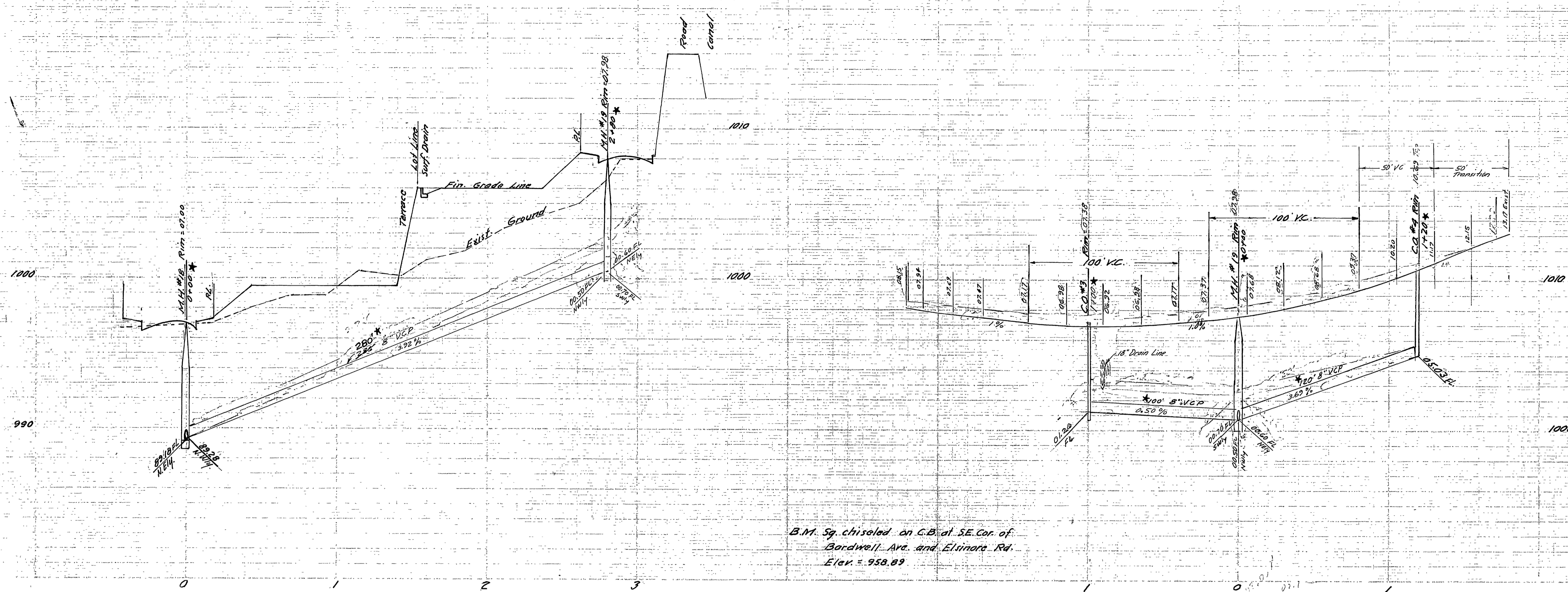


NOTE: All wyes and laterals to be located in the field.
 All manholes to conform to City of Riverside
 Std. No. 500

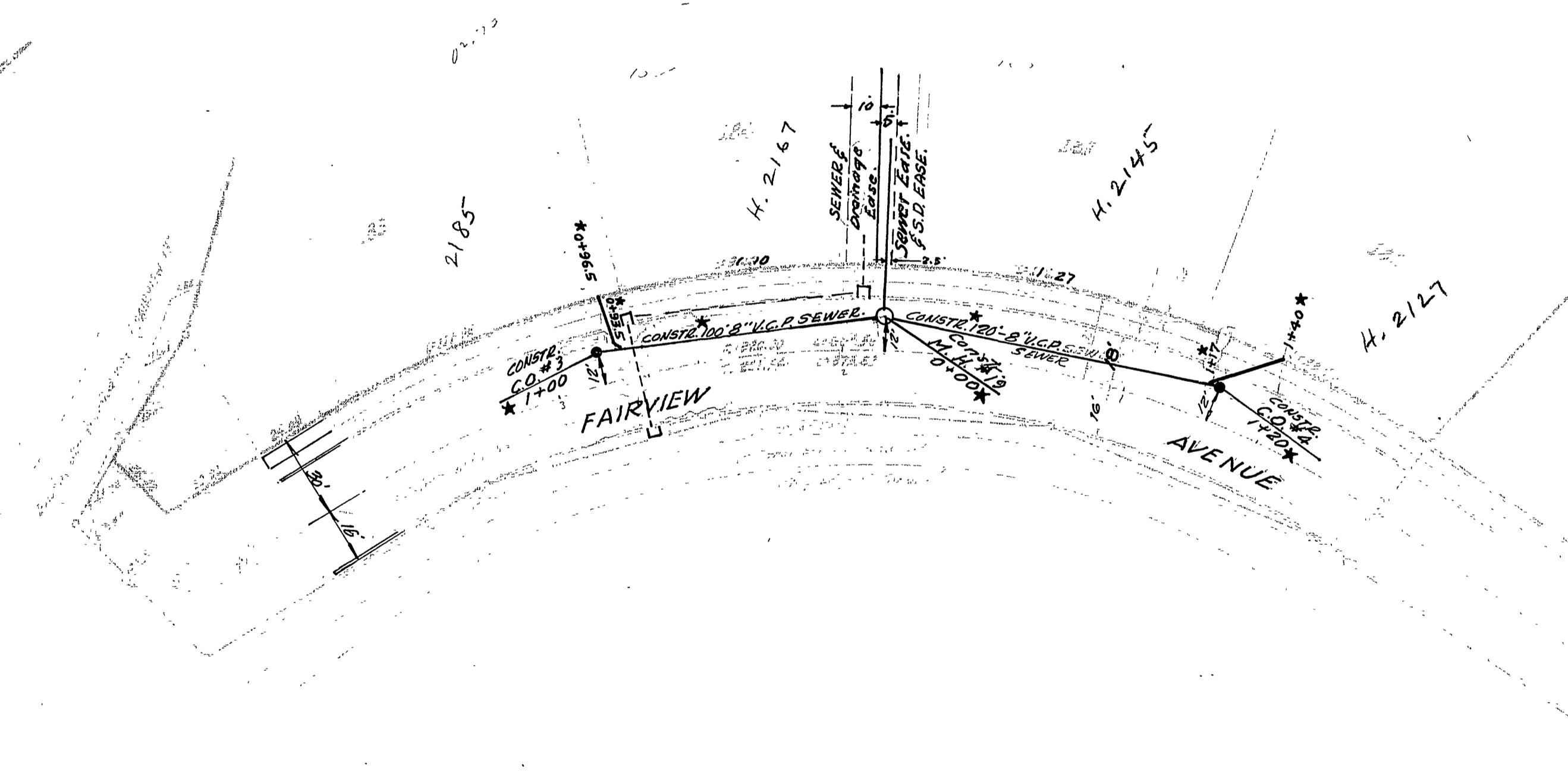
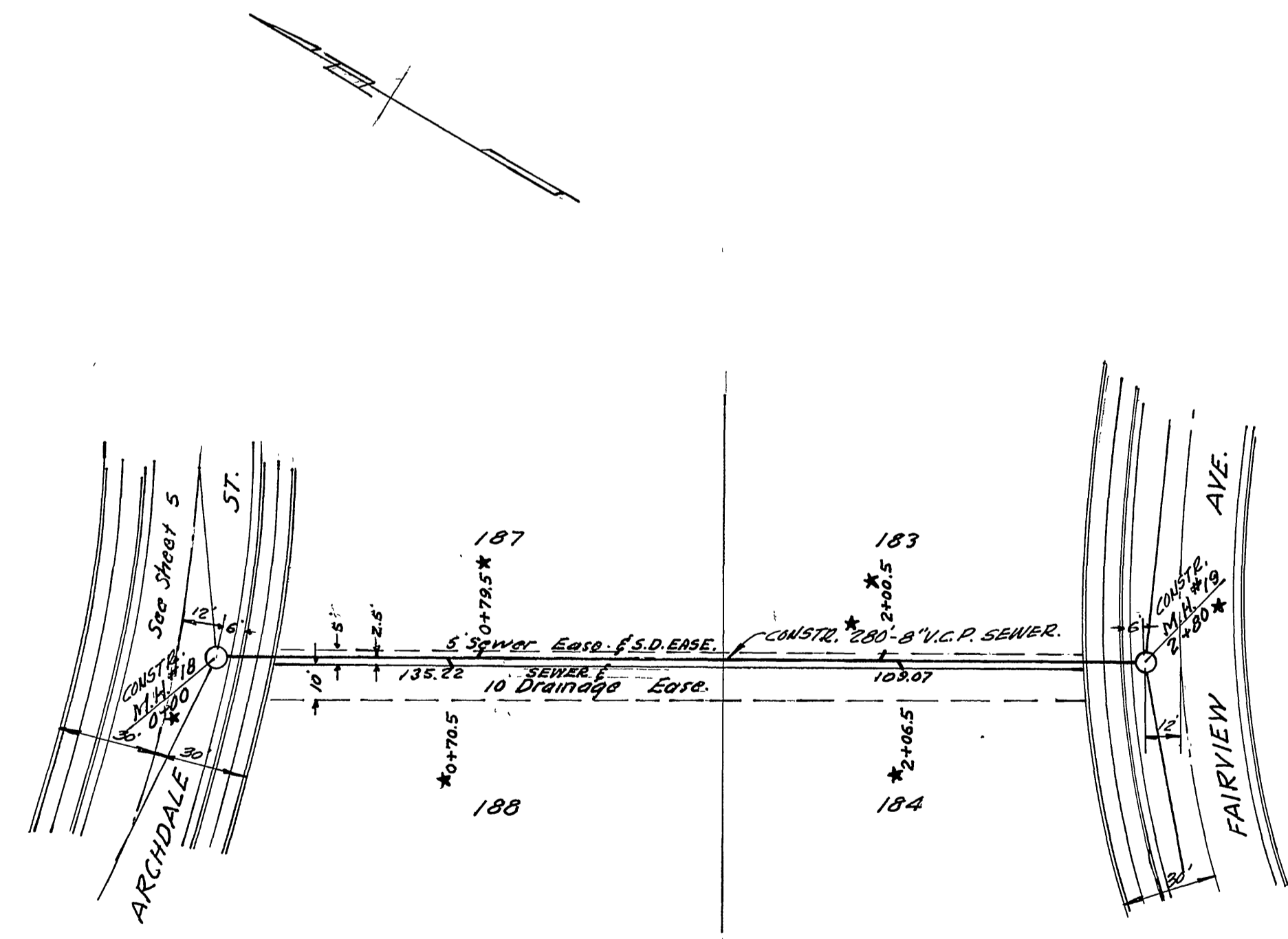
REVISIONS		
NO.	DATE	DESCRIPTION
1	7/16/60	Revised M.H. 11' x 12' with 7/16/60
*	9-22-60	As Built

Designed by G.A.M.C. Checked by
 Drawn by Dick
 Recommended by
 Assistant City Engineer

J.F. DAVIDSON - CIVIL ENGINEER
 R.E. No. 862
 RIVERSIDE, CALIFORNIA
 APPROVED BY *George E. McCarty* DATE 6/29/60
 CITY OF RIVERSIDE, CALIFORNIA
 DEPARTMENT OF PUBLIC WORKS
 SEWER PLAN & PROFILE
 ARCHDALE ST. - FRONTAGE RD.
 VICTORIA GROVES - UNIT NO. 6
 HORIZ. SCALE 1" = 40' VERT. SCALE 1" = 4'
 APPROVED BY *George E. McCarty*
 Director of Public Works
 DATE July 6, 1960
 NO. S-189
 SHEET 6 OF 7



B.M. Sp. chiseled on C.B. at SE. Cor. of
Bardwell Ave. and Elmore Rd.
Elev. = 958.89



NOTE: All wyes and laterals to be located in the field.

All manholes to conform to City of Riverside
Std. No. 500. - All cleanouts to conform to
City of Riverside Std. No. 560.

SEWER
FAIRVIEW AVE. - EASEMENT
VICTORIA GROVES UNIT No. 6
1" = 40' 1" = 4'

S-189

★ = "As Built," 11-24-59, H. Ball