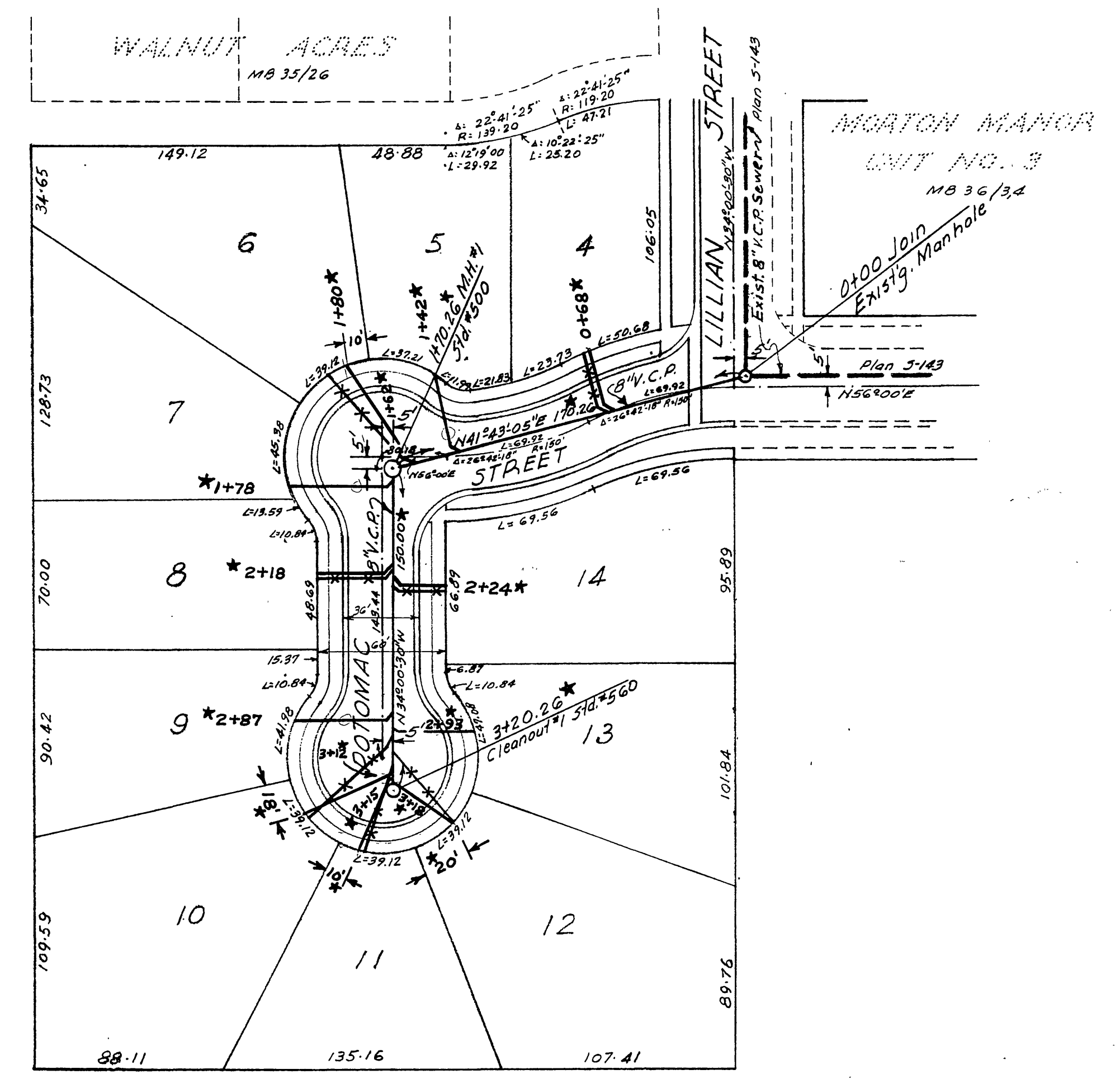


PROFILE	
NO.	BY
NOTE BOOK	DATE
GRADES CHECKED	
ALIGNMENT CHECKED	
RT. OF WAY CHECKED	



BENCH MARK - Spike & Lead in Catch Basin SW corner of Jefferson & Magnolia. Elev. 794.61. FB 354/12.

CONSTRUCTION - To be in accordance with Standards and Specifications of the City of Riverside, Department of Public Works.

WYES & HOUSE LATERALS to be located in field.

QUANTITY ESTIMATE

8" Vitrified Clay Sewer Pipe	320 lin. ft.
4" Vitrified Clay Sewer Pipe	470 lin. ft.
8"x8"x4" Vitrified Clay Wyes	11
Std. No. 500 Manhole	1
Std. No. 560 Cleanout	1

REVISION		
MARK	DATE	DESCRIPTION
*	9-29-59	'As Built', n. Ball

ALBERT A. WEBB ASSOCIATES
 CIVIL ENGINEERS - RIVERSIDE, CALIFORNIA
 APPROVED: *[Signature]* DATE 6-26-59

CITY OF RIVERSIDE, CALIFORNIA
 DEPARTMENT OF PUBLIC WORKS

SEWER PLAN & PROFILE
 POTOMAC STREET
 WALNUT ACRES NO. 2

APPROVED BY: *[Signature]*
 DIRECTOR OF PUBLIC WORKS
 DATE: July 1, 1959
 NO. **S-190**
 SHEET 1 OF 1

PLAN	
NO.	BY
NOTE BOOK	DATE
ALIGNMENT CHECKED	
RT. OF WAY CHECKED	