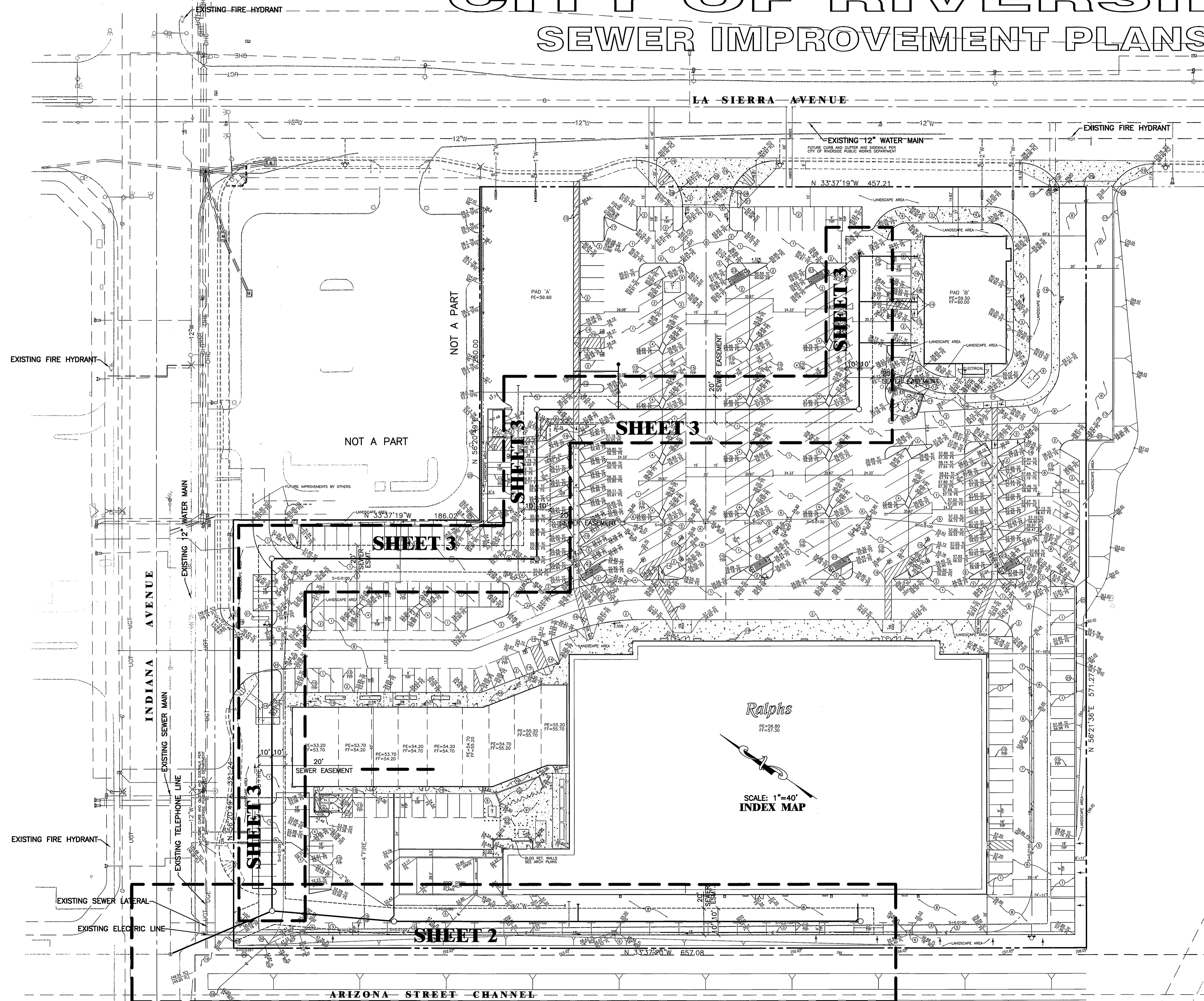
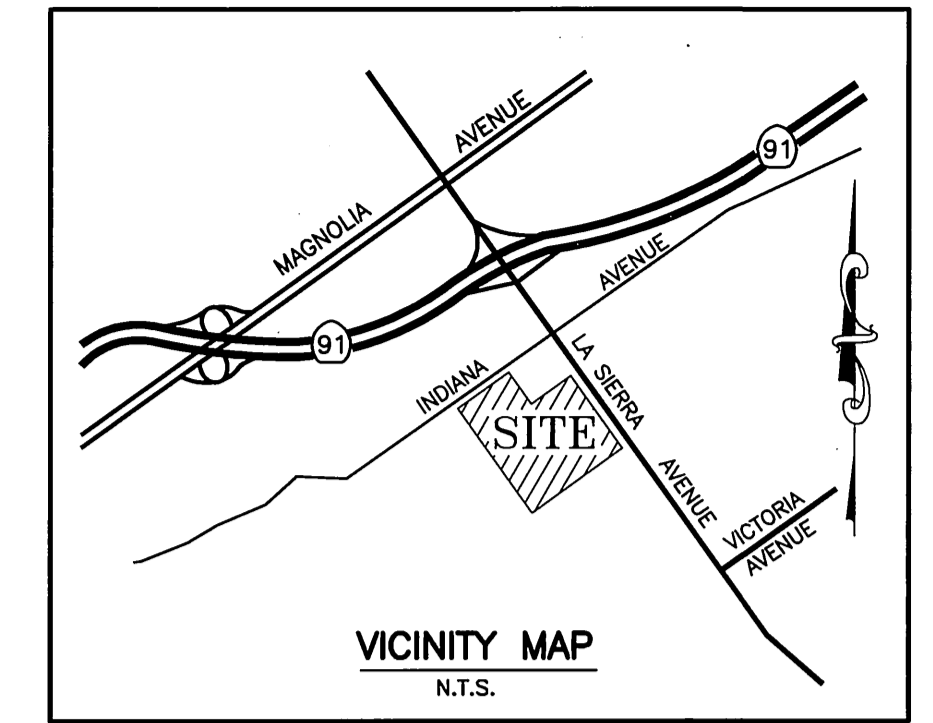


CITY OF RIVERSIDE SEWER IMPROVEMENT PLANS



GENERAL NOTES:

- NO PERSON SHALL PERFORM ANY CONSTRUCTION ACTIVITY OR INSTALL ANY OBJECTS WITHOUT A VALID CONSTRUCTION PERMIT OR A STREET OPENING PERMIT OR AN ENCROACHMENT PERMIT ISSUED BY THE CITY'S PUBLIC WORKS DEPARTMENT
- IT SHALL BE THE RESPONSIBILITY OF THE CONTRACTOR TO CLEAR THE RIGHT OF WAY IN ACCORDANCE WITH THE PROVISIONS OF LAW AS IT AFFECTS EACH UTILITY INCLUDING IRRIGATION LINES AND APPURTENANCES AND AT NO COST TO THE CITY.
- CONSTRUCTION SHALL BE IN ACCORDANCE WITH THE CITY OF RIVERSIDE DEPARTMENT OF PUBLIC WORKS, STANDARD DRAWINGS, ITS SUPPLEMENTAL NOTES AND THE STANDARD SPECIFICATIONS FOR PUBLIC WORKS CONSTRUCTION, CURRENT EDITION.
- THE PRIVATE ENGINEER SIGNING THESE PLANS IS RESPONSIBLE FOR ASSURING THE ACCURACY AND ACCEPTABILITY OF THE WORK HEREON. IN THE EVENT OF DISCREPANCIES ARISING DURING CONSTRUCTION, THE PRIVATE ENGINEER SHALL BE RESPONSIBLE FOR DETERMINING AN ACCEPTABLE SOLUTION AND REVISING THE PLANS FOR APPROVAL BY THE CITY.
- QUANTITIES SHOWN ARE FOR INFORMATION ONLY AND THE CITY OF RIVERSIDE IS NOT RESPONSIBLE FOR THEIR ACCURACY
- ALL FLAGGED ELEVATIONS SHALL BE STAKED IN THE FIELD BY THE PRIVATE ENGINEER.
- WHERE NEW PAVEMENT IS TO JOIN EXISTING PAVEMENT, THE EDGE OF THE EXISTING PAVEMENT SHALL BE TRIMMED IN A SMOOTH AND STRAIGHT LINE. CONSTRUCT MATCH-UP PAVING AS SHOWN ON THE PLANS AND OVERLAY PAVING AS DIRECTED IN THE FIELD TO PRODUCE A SMOOTH SECTION.
- THE CONTRACTOR SHALL CALL IN A LOCATION REQUEST TO UNDERGROUND SERVICE ALERT (USA), PHONE # 1-800-227-2600, TWO WORKING DAYS BEFORE DIGGING. NO CONSTRUCTION PERMIT WILL BE ISSUED BY THE PUBLIC WORKS DEPARTMENT INVOLVING EXCAVATION FOR UNDERGROUND FACILITIES UNLESS THE APPLICANT HAS PROVIDED AN INQUIRY IDENTIFICATION NUMBER BY U.S.A.
- CONTRACTOR IS TO VERIFY EXISTING SEWER ELEVATION PRIOR TO CONSTRUCTION.
LOCATION OF LATERALS TO BE DETERMINED IN THE FIELD AT THE DIRECTION OF THE OWNER. AVOID CONFLICT WITH PROPOSED AND/OR EXISTING FACILITIES.
- NO FINISHED FLOOR ELEVATION SHALL BE LESS THAN 6" ABOVE THE UPPER MANHOLE RIM ELEVATION OF THE SEWER LINE SEGMENT BEING CONNECTED TO, WITHOUT HAVING A PROPER BACKWATER VALVE INSTALLED IN THE LATERAL.
- A PLUG SHALL BE INSTALLED AND WILL REMAIN IN PLACE WHERE THE NEW SEWER CONNECTS WITH THE EXISTING SEWER UNTIL THE NEW SEWER IS ACCEPTED BY THE CITY.
- THE SEWER CONTRACTOR SHALL ADJUST MANHOLES TO FINISH GRADE AFTER PAVING IS COMPLETED.

SEWER CONSTRUCTION NOTES:

- RECONTOUR MANHOLE BOTTOM AND CONSTRUCT NEW INLET FOR 8" VCP INTO EXISTING MANHOLE.
- INSTALL 8" VCP.
- CONSTRUCT SEWER MANHOLE PER CITY OF RIVERSIDE STD. DWG. NO. 500.
- CONSTRUCT SEWER CLEANOUT PER CITY OF RIVERSIDE STD. DWG. NO. 560.
- INSTALL 6" SEWER LATERAL PER CITY OF RIVERSIDE STD. DWG. NO. 562
- INSTALL 4" SEWER LATERAL PER CITY OF RIVERSIDE STD. DWG. NO. 562
- CONSTRUCT SEWER CLEANOUT PER CITY OF RIVERSIDE STD. DWG. NO. 560. (MODIFIED TO 6" VCP)

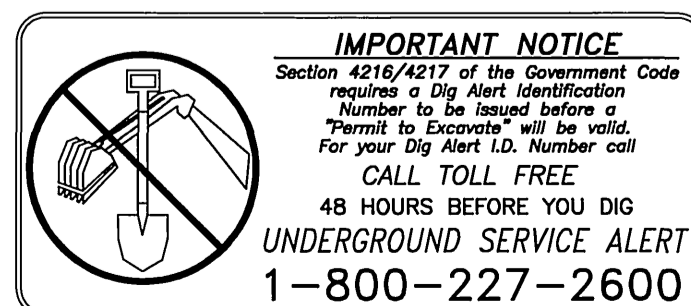
SOILS ENGINEER:

SLADDEN ENGINEERING
39-725 GARAND LANE, SUITE G
PALM DESERT, CALIFORNIA 92211
PH (760) 772-3893
FAX (760) 772-3895

BENCH MARK:

EP-P2
CHISLED SQUARE ON THE TOP OF CURB AT THE WLY END OF A CATCH BASIN FRONTING THE SLY CURB OF INDIANA AVE AT THE SE CORNER OF INDIANA AVE AND FILLMORE ST. ELEVATION = 738.410' (NAVD 29)

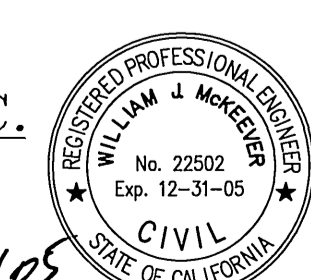
CITY BUSINESS TAX CERTIFICATE NO: 9428 EXP. DATE 12/31/2005



**CITY OF RIVERSIDE
PUBLIC UTILITIES - WATER**

APPROVED: *MW McNeil* 10/13/05
DATE

ENGINEER IN RESPONSIBLE CHARGE
W.J. McKEEVER, INC.
CIVIL ENGINEERING
647 NO. MAIN ST., RIVERSIDE, CA 92501
PH (951) 341-3700
W.J. McKeever, R.C.E. 22502 10/13/05 DATE



MARK	REVISIONS	APPR.	DATE

DESIGNED BY: _____ DRAWN BY: _____ CHECKED BY: _____

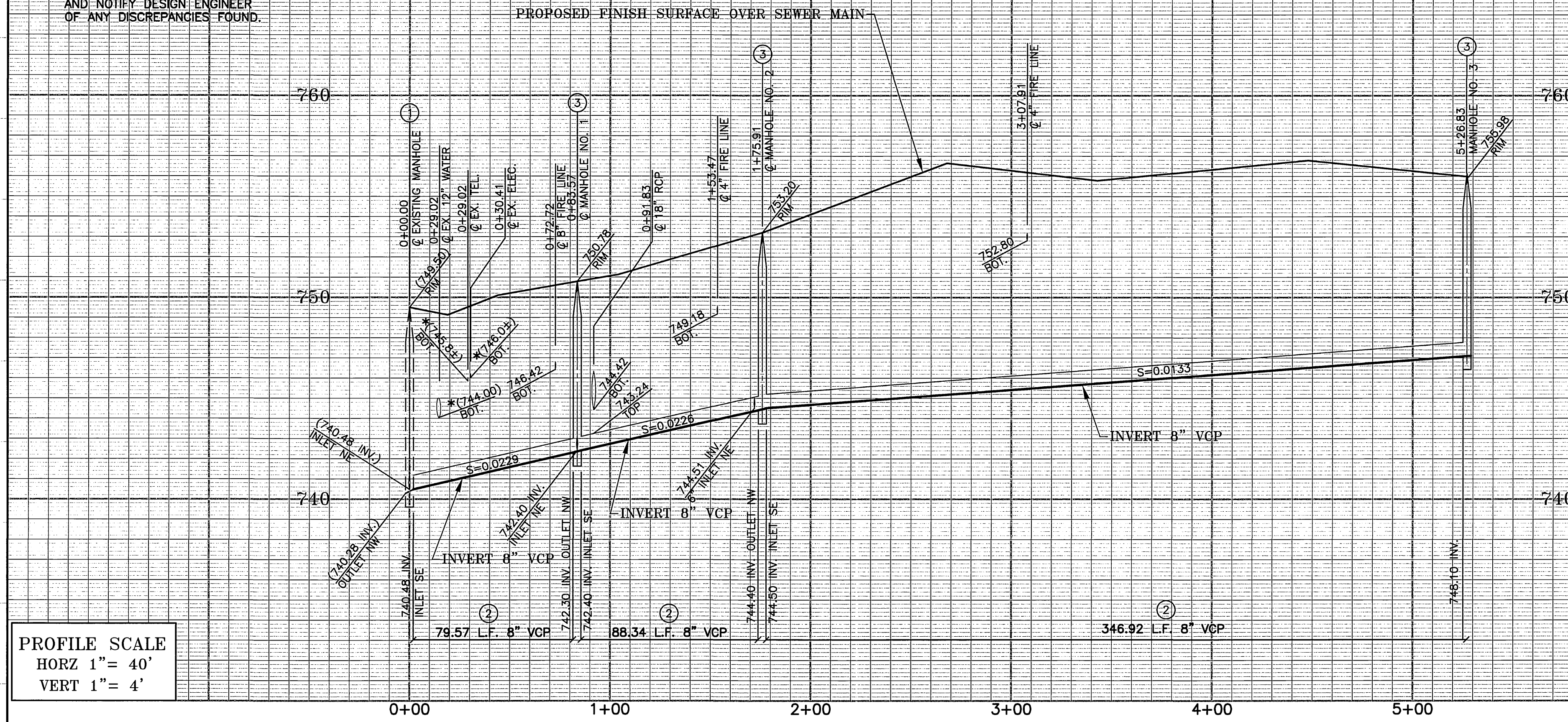
**CITY OF RIVERSIDE, CALIFORNIA
PUBLIC WORKS DEPARTMENT**
APPROVED BY: *Alan Boyd*
CITY ENGINEER
DATE: 10/25/05

**SEWER IMPROVEMENT PLANS
PARCEL MAP NO. 32472**
HORIZONTAL SCALE: 1" = 40' VERTICAL SCALE: 1" = 4'

S-1911
SHEET 1 OF 3

PW05-0347

*CONTRACTOR TO VERIFY EXACT LOCATION AND DEPTH OF EXISTING UTILITIES PRIOR TO COMMENCING CONSTRUCTION AND NOTIFY DESIGN ENGINEER OF ANY DISCREPANCIES FOUND.

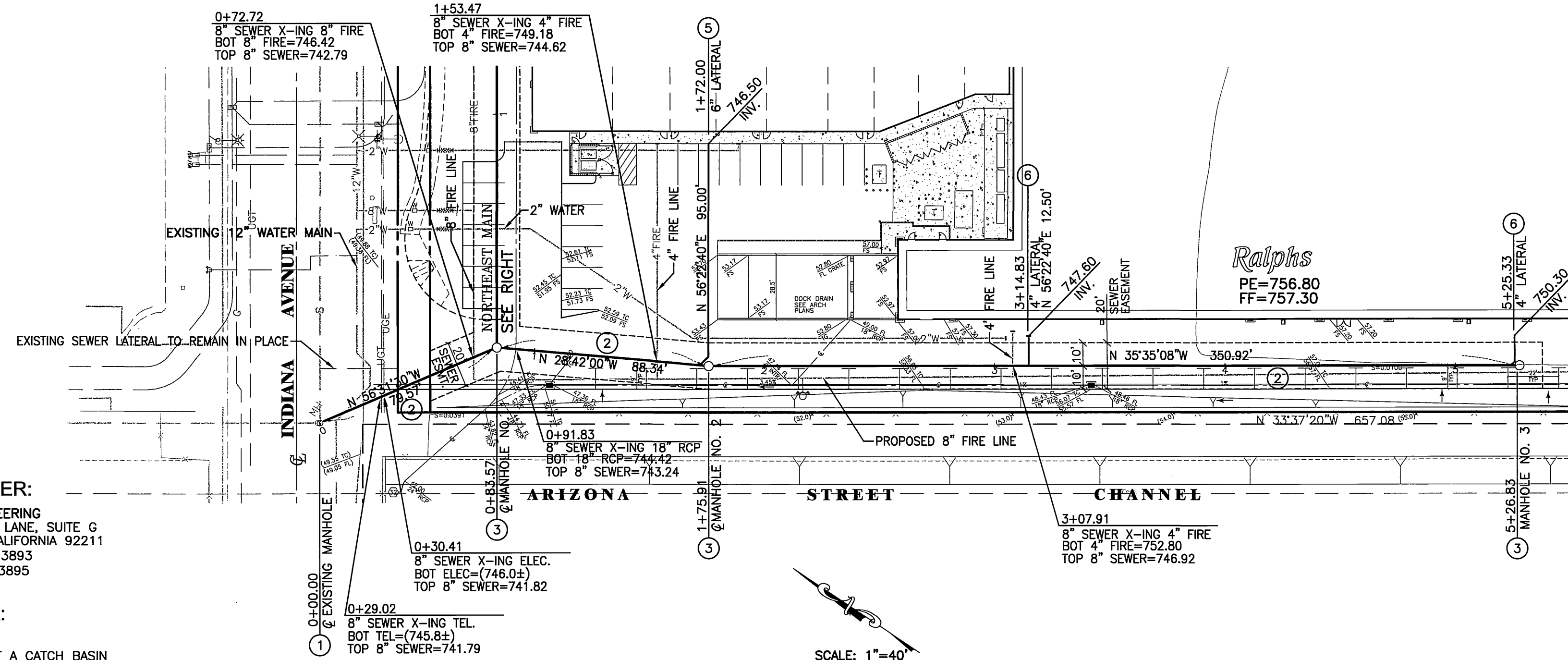


PROFILE SCALE
 HORZ 1" = 40'
 VERT 1" = 4'



CONSTRUCTION NOTES:

- ① RECONTOUR MANHOLE BOTTOM AND CONSTRUCT NEW INLET FOR 8" VCP INTO EXISTING MANHOLE.
- ② INSTALL 8" VCP.
- ③ CONSTRUCT SEWER MANHOLE PER CITY OF RIVERSIDE STD. DWG. NO. 500.
- ⑤ INSTALL 6" SEWER LATERAL PER CITY OF RIVERSIDE STD. DWG. NO. 562
- ⑥ INSTALL 4" SEWER LATERAL PER CITY OF RIVERSIDE STD. DWG. NO. 562



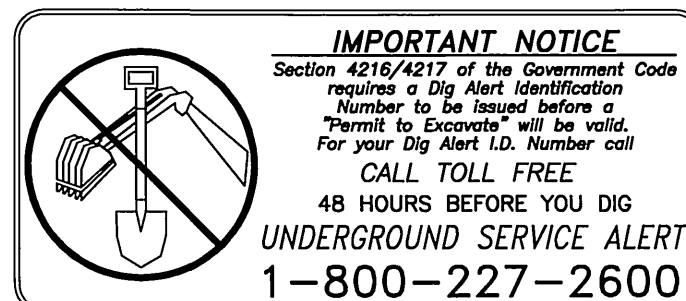
SOUTHEAST MAIN LINE A

SOILS ENGINEER:

SLADDEN ENGINEERING
 39-725 GARAND LANE, SUITE C
 PALM DESERT, CALIFORNIA 92211
 PH (760) 772-3893
 FAX (760) 772-3895

BENCH MARK:

EP-P2
 AT THE WLY END OF A CATCH BASIN
 FRONTING THE SLY CURB OF INDIANA
 AVE AT THE SE CORNER OF INDIANA
 AVE AND FILLMORE ST.
 ELEVATION = 738.410' (NAVD 29)



CITY OF RIVERSIDE
 PUBLIC UTILITIES - WATER

MW McLeod 10/13/05
 APPROVED DATE

ENGINEER IN RESPONSIBLE CHARGE
 W.J. McKEEVER, INC.
 CIVIL ENGINEERING
 647 NO. MAIN ST., RIVERSIDE, CA 92501
 PH (951) 541-3700
 W.J. McKeever, R.C.E. 22502 10/13/05
 DATE



CITY OF RIVERSIDE, CALIFORNIA
 PUBLIC WORKS DEPARTMENT

APPROVED BY	BY	DATE	APPROVED BY
PRINCIPAL ENGINEER	<i>[Signature]</i>	10/13/05	<i>[Signature]</i>
			CITY ENGINEER
			DATE 10/25/05

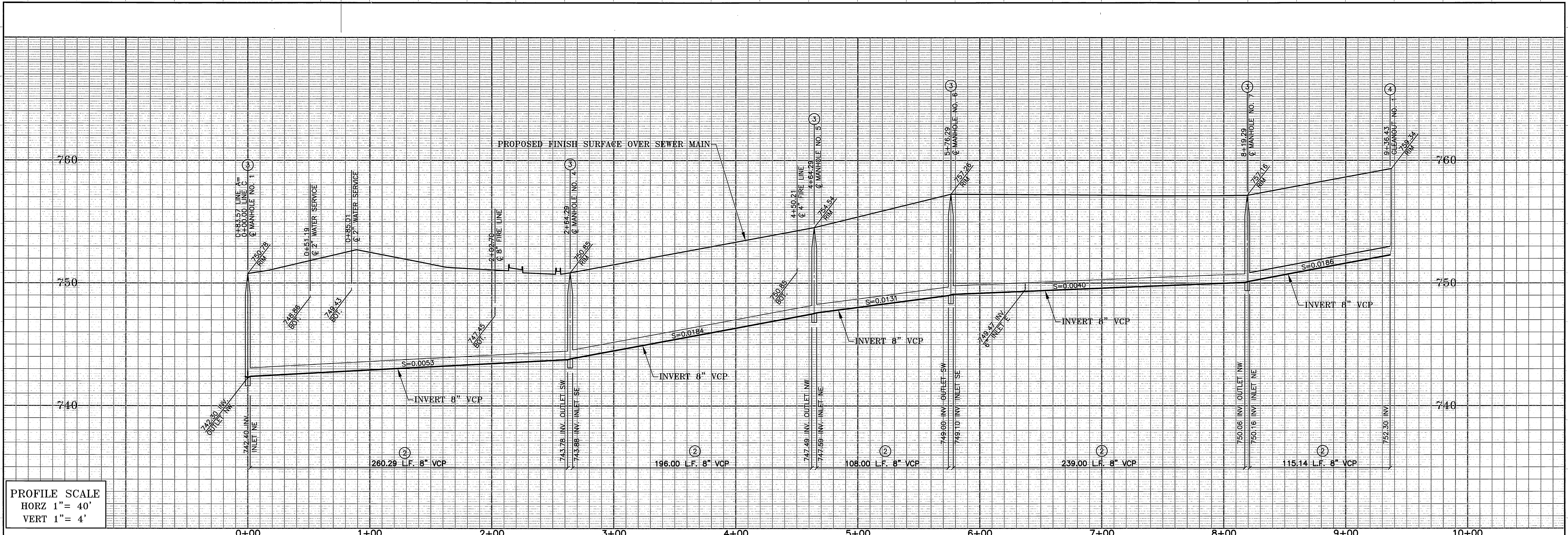
SEWER IMPROVEMENT PLANS
 PARCEL MAP NO. 32472

S-1911

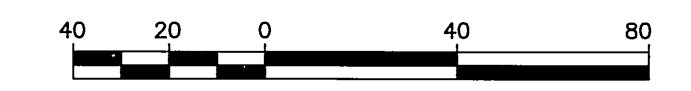
SHEET 2 OF 3

HORIZONTAL SCALE: 1" = 40' VERTICAL SCALE: 1" = 4'

INDEXED 11-21-05 LHM



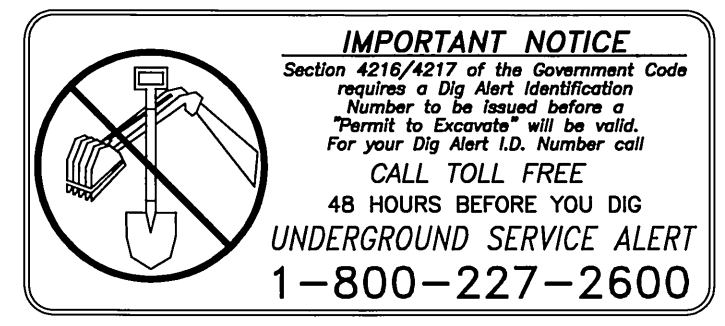
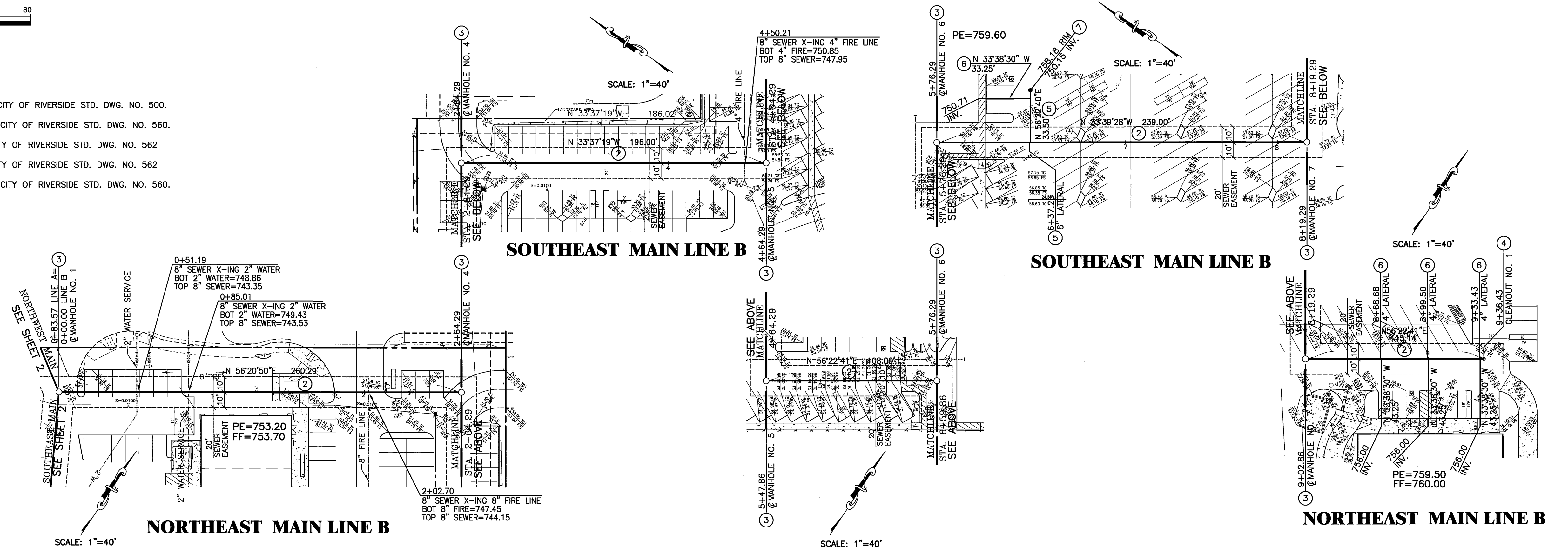
PROFILE SCALE
 HORZ 1" = 40'
 VERT 1" = 4'



- CONSTRUCTION NOTES:
- ② INSTALL 8" VCP.
 - ③ CONSTRUCT SEWER MANHOLE PER CITY OF RIVERSIDE STD. DWG. NO. 500.
 - ④ CONSTRUCT SEWER CLEANOUT PER CITY OF RIVERSIDE STD. DWG. NO. 560.
 - ⑤ INSTALL 6" SEWER LATERAL PER CITY OF RIVERSIDE STD. DWG. NO. 562.
 - ⑥ INSTALL 4" SEWER LATERAL PER CITY OF RIVERSIDE STD. DWG. NO. 562.
 - ⑦ CONSTRUCT SEWER CLEANOUT PER CITY OF RIVERSIDE STD. DWG. NO. 560. (MODIFIED TO 6" VCP)

SOILS ENGINEER:
 SLADDEN ENGINEERING
 39-725 GARAND LANE, SUITE G
 PALM DESERT, CALIFORNIA 92211
 PH (760) 772-3893
 FAX (760) 772-3895

BENCH MARK:
 EP-P2
 CHISELED SQUARE ON THE TOP OF CURB
 AT THE WLY END OF A CATCH BASIN
 FRONTING THE SLY CURB OF INDIANA
 AVE AT THE SE CORNER OF INDIANA
 AVE AND FILLMORE ST.
 ELEVATION = 738.410' (NAVD 29)



CITY OF RIVERSIDE
 PUBLIC UTILITIES - WATER

MW Molea 10/19/05
 APPROVED DATE

ENGINEER IN RESPONSIBLE CHARGE
 W.J. McKEEVER, INC.
 CIVIL ENGINEERING
 647 NO. MAIN ST., RIVERSIDE, CA 92501
 PH(951) 941-3700

W.J. McKEEVER, R.C.E. 22502 10/19/05
 DATE

MARK	REVISIONS	APPR.	DATE

DESIGNED BY _____ DRAWN BY _____ CHECKED BY _____

CITY OF RIVERSIDE, CALIFORNIA
 PUBLIC WORKS DEPARTMENT

APPROVED BY _____ BY _____ DATE _____
 PRINCIPAL ENGINEER

APPROVED BY _____
 DATE 10/19/05
 CITY ENGINEER

SEWER IMPROVEMENT PLANS
 PARCEL MAP NO. 32472

HORIZONTAL SCALE: 1" = 40' VERTICAL SCALE: 1" = 4'

S-1911
 SHEET 3 OF 3

INDEXED 11-21-05 LFH