

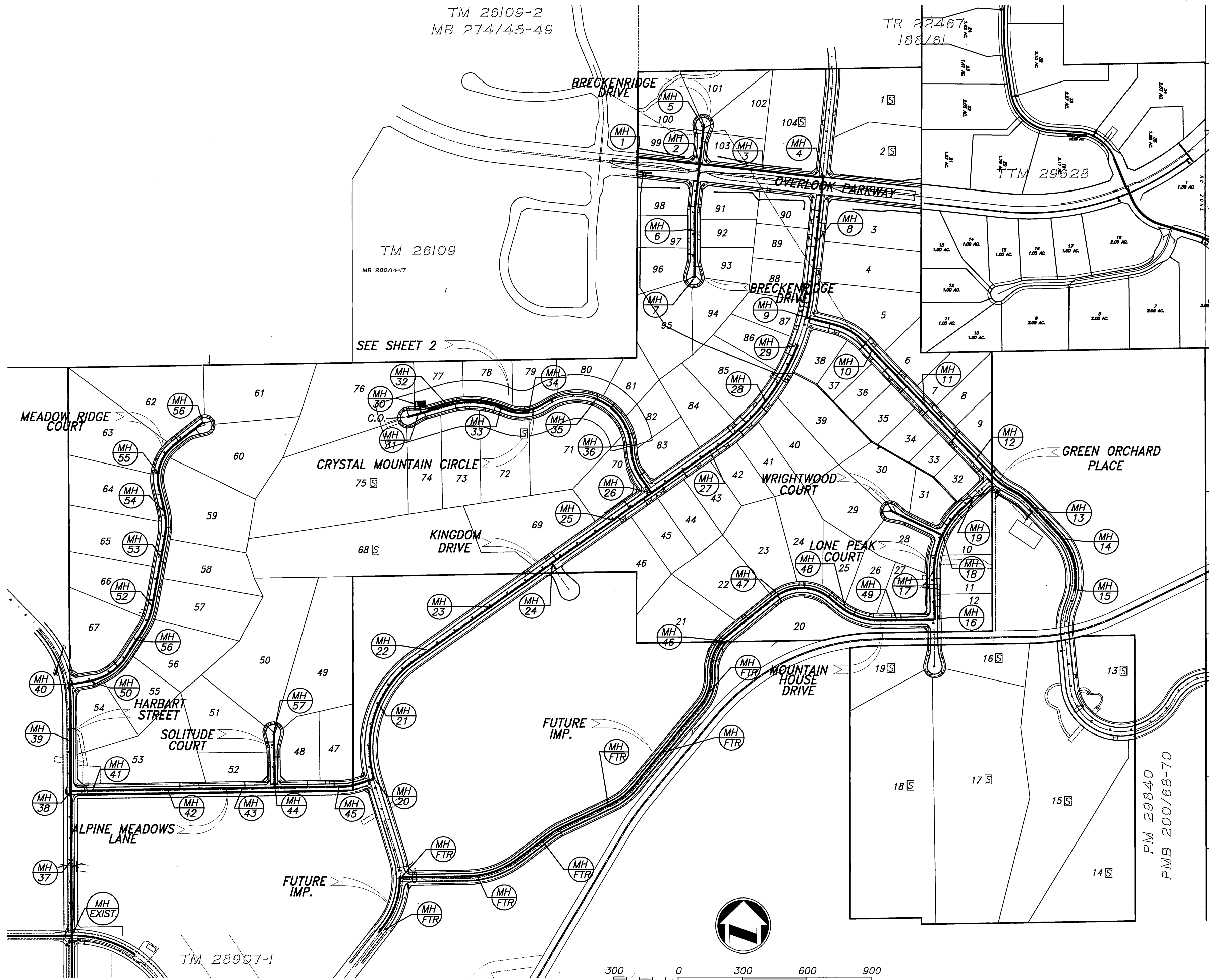
FORCE SEWER MAIN IMPROVEMENT PLANS FOR: TRACT No. 29515

TM 26109-2
MB 274/45-49

TR 22467
188/61

TM 26109
MB 280/14-17

SEE SHEET 2



GENERAL NOTES

1. NO PERSON SHALL PERFORM ANY CONSTRUCTION ACTIVITY OR INSTALL ANY OBJECTS WITHIN THE PUBLIC RIGHT-OF-WAY OR EASEMENTS OF THE CITY OF RIVERSIDE WITHOUT A VALID CONSTRUCTION PERMIT OR, A STREET OPENING PERMIT OR AN ENCROACHMENT PERMIT ISSUED BY THE CITY'S PUBLIC WORKS DEPARTMENT.
2. IT SHALL BE THE RESPONSIBILITY OF THE CONTRACTOR TO CLEAR THE RIGHT OF WAY IN ACCORDANCE WITH THE PROVISIONS OF LAW AS IT AFFECTS EACH UTILITY INCLUDING IRRIGATION LINES AND APPURTENANCES AND AT NO COST TO THE CITY.
3. CONSTRUCTION SHALL BE IN ACCORDANCE WITH THE CITY OF RIVERSIDE DEPARTMENT OF PUBLIC WORKS, STANDARD DRAWINGS, ITS SUPPLEMENTAL NOTES AND THE STANDARD SPECIFICATIONS FOR PUBLIC WORKS CONSTRUCTION, CURRENT EDITION.
4. THE PRIVATE ENGINEER SIGNING THESE PLANS IS RESPONSIBLE FOR ASSURING THE ACCURACY AND ACCEPTABILITY OF THE WORK HEREON. IN THE EVENT OF DISCREPANCIES ARISING DURING CONSTRUCTION, THE PRIVATE ENGINEER SHALL BE RESPONSIBLE FOR DETERMINING AN ACCEPTABLE SOLUTION AND REVISING THE PLANS FOR APPROVAL BY THE CITY.
5. QUANTITIES SHOWN ARE FOR INFORMATION ONLY AND THE CITY OF RIVERSIDE IS NOT RESPONSIBLE FOR THEIR ACCURACY.
6. THE DEVELOPER SHALL BE RESPONSIBLE FOR PRESERVING OR RE-ESTABLISHING AND REFERENCING SURVEY MONUMENTS DESTROYED, DISTURBED OR BURIED AS A RESULT OF CONSTRUCTION SHOWN HEREON.
7. ALL FLAGGED ELEVATIONS SHALL BE STAKED IN THE FIELD BY THE PRIVATE ENGINEER.
8. THE CONTRACTOR SHALL CALL IN A LOCATION REQUEST TO UNDERGROUND SERVICE ALERT (USA), PHONE # 1-800-227-2600, TWO WORKING DAYS BEFORE DIGGING. NO CONSTRUCTION PERMIT WILL BE ISSUED BY THE PUBLIC WORKS DEPARTMENT INVOLVING EXCAVATION FOR UNDERGROUND FACILITIES UNLESS THE APPLICANT HAS BEEN PROVIDED AN INQUIRY IDENTIFICATION NUMBER BY U.S.A.
9. CONTRACTOR IS TO VERIFY EXISTING SEWER ELEVATION PRIOR TO CONSTRUCTION.
10. LOCATION OF LATERALS TO BE DETERMINED IN THE FIELD AT THE DIRECTION OF THE OWNER. AVOID CONFLICT WITH PROPOSED AND/OR EXISTING FACILITIES.
11. NO FINISHED FLOOR ELEVATION SHALL BE LESS THAN 6" ABOVE THE UPPER MANHOLE RIM ELEVATION OF THE SEWER LINE SEGMENT BEING CONNECTED TO, WITHOUT HAVING A PROPER BACKWATER VALVE INSTALLED IN THE LATERAL.
12. A PLUG SHALL BE INSTALLED AND WILL REMAIN IN PLACE WHERE THE NEW SEWER CONNECTS WITH THE EXISTING SEWER UNTIL THE NEW SEWER IS ACCEPTED BY THE CITY.
13. THE SEWER CONTRACTOR SHALL ADJUST MANHOLES TO FINAL GRADE AFTER PAVING IS COMPLETED.

SEWAGE SPILL CONTAINMENT PLAN

CHAPTER 14.12.295 OF THE RIVERSIDE MUNICIPAL CODE PROHIBITS THE DISCHARGE OF ANY POLLUTANT TO A STORM DRAIN OR ANY SURFACE, PIPE, OR WATERWAY LEADING TO A STORM DRAIN. THE CONTRACTOR SHALL PREPARE AND SUBMIT TO THE INSPECTOR FOR REVIEW A SEWAGE SPILL CONTAINMENT PLAN. NO WORK WILL BE PERMITTED ON THE EXISTING SEWER SYSTEM UNTIL THE REVIEW IS COMPLETED. A COPY OF THE PLAN SHALL BE KEPT ON THE PROJECT SITE DURING CONSTRUCTION. THIS PLAN SHALL DESCRIBE THE METHODS TO BE USED TO PREVENT OR CONTAIN SEWAGE SPILLS. AT A MINIMUM, THE PLAN SHALL PROVIDE:

A SCALED DRAWING SHOWING ANY PROPOSED EMERGENCY CONTAINMENT AREA(S) AND THE METHODS USED TO CONSTRUCT THEM. THIS PLAN SHALL ALSO SHOW ANY STORM DRAIN INLETS THAT COULD BE AFFECTED BY AN ACCIDENTAL SPILL AND METHODS TO BE USED TO PREVENT THE INLETS FROM ACCEPTING ANY SEWAGE. IN ADDITION, SHOW THE CONTROLS TO BE USED TO LIMIT ACCESS TO THE SPILL AREA BY THE PUBLIC.

DESCRIBE THE METHODS TO BE USED FOR REMOVING SEWAGE AND CLEANING OF THE STORM DRAIN INLETS, STORM DRAINS, CANALS, AND ARROYOS. THIS DESCRIPTION SHALL INCLUDE METHODS FOR SOLIDS REMOVAL.

DESCRIBE DISINFECTING AND DISINFECTION CLEAN UP METHODS. THESE METHODS SHALL SHOW HOW DISINFECTING MATERIALS WILL BE PREVENTED FROM ENTERING STORM DRAINS, CANALS, AND ARROYOS.

A SCALED DRAWING(S) SHOWING ANY PROPOSED SEWAGE BY-PASS PIPES. THIS DRAWING SHALL INDICATE ANY SEWER MANHOLES PROPOSED TO BE PLUGGED AND THE DAY AND TIME OF DAY THIS OPERATION WILL OCCUR.

THE SIZE AND MATERIAL OF ANY BY-PASS PIPES.

THE METHODS TO BE USED TO CONNECT THE BY-PASS PIPE(S) TO THE EXISTING SEWER SYSTEM.

IF PUMPING IS PROPOSED, DESCRIBE THE NUMBER AND CAPACITY OF THE PUMPS. EACH PUMP, AT A MINIMUM, MUST BE CAPABLE OF PASSING A 3-INCH DIAMETER SOLID.

IF STORAGE IS PROPOSED, PROVIDE THE METHODS TO BE USED FOR THE SEWAGE STORAGE AND REMOVAL FROM THE SITE. IF A TRUCK WITH A STORAGE TANK IS TO BE USED, PROVIDE THE CAPACITY OF THE TANK. IF A WATER TRUCK IS PROPOSED FOR THIS PURPOSE, IT MUST BE DEDICATED ONLY FOR THIS OPERATION.

IN THE EVENT OF A SPILL, THE CONTRACTOR SHALL CONTACT THE ENGINEER AND FIELD MAINTENANCE TECHNICIAN, CELL 951-906-9066 (IF NOT AVAILABLE CONTACT THE WASTE WATER TREATMENT PLANT AT 951-351-6140). THE CONTRACTOR SHALL DOCUMENT THE SPILL BY PHOTOGRAPHING ITS EXTENT. THESE PHOTOGRAPHS SHALL BE SUBMITTED TO THE CITY FOR INCLUSION IN THE SPILL REPORT.

SEWER CONSTRUCTION GENERAL NOTES

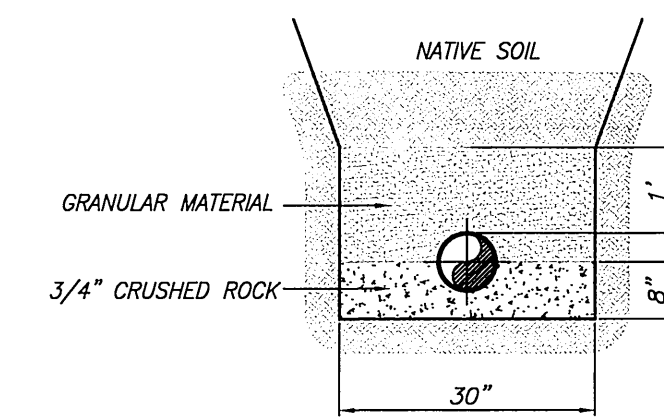
1. CONTRACTOR IS TO VERIFY EXISTING SEWER ELEVATION PRIOR TO CONSTRUCTION
2. LOCATION OF LATERALS TO BE DETERMINED IN THE FIELD AT THE DIRECTION OF THE OWNER. AVOID CONFLICT WITH PROPOSED AND/OR EXISTING FACILITIES.
3. NO FINISHED FLOOR ELEVATIONS SHALL BE LESS THAN 6" ABOVE THE UPPER MANHOLE RIM ELEVATION OF THE SEWER LINE SEGMENT BEING CONNECTED TO, WITHOUT HAVING A PROPER BACKWATER VALVE INSTALLED IN THE LATERAL.
4. A PLUG SHALL BE INSTALLED AND WILL REMAIN IN PLACE WHERE THE NEW SEWER CONNECTS WITH THE EXISTING SEWER UNTIL THE NEW SEWER IS ACCEPTED BY THE CITY.
5. THE SEWER CONTRACTOR SHALL ADJUST MANHOLES TO FINAL GRADE AFTER PAVING IS COMPLETED.
6. IT SHALL BE THE RESPONSIBILITY OF THE CONTRACTOR TO CLEAR THE RIGHT OF WAY IN ACCORDANCE WITH THE PROVISIONS OF LAW AS IT AFFECTS EACH UTILITY INCLUDING IRRIGATION LINES AND APPURTENANCES AND AT NO COST TO THE CITY.
7. CONSTRUCTION SHALL BE IN ACCORDANCE WITH THE CITY OF RIVERSIDE DEPARTMENT OF PUBLIC WORKS, STANDARD DRAWINGS, ITS SUPPLEMENTAL NOTES AND THE STANDARD SPECIFICATIONS FOR PUBLIC WORKS CONSTRUCTION, CURRENT EDITION.
8. THE PRIVATE ENGINEER SIGNING THESE PLANS IS RESPONSIBLE FOR ASSURING THE ACCURACY AND ACCEPTABILITY OF THE WORK HEREON. IN THE EVENT OF DISCREPANCIES ARISING DURING CONSTRUCTION, THE PRIVATE ENGINEER SHALL BE RESPONSIBLE FOR DETERMINING AN ACCEPTABLE SOLUTION AND REVISING THE PLANS FOR APPROVAL BY THE CITY.
9. THE DEVELOPER SHALL BE RESPONSIBLE FOR PRESERVING OR RE-ESTABLISHING AND REFERENCING SURVEY MONUMENTS DESTROYED, DISTURBED OR BURIED AS A RESULT OF CONSTRUCTION SHOWN HEREON.
10. ALL FLAGGED ELEVATIONS SHALL BE STAKED IN THE FIELD BY THE PRIVATE ENGINEER.
11. QUANTITIES SHOWN ARE FOR INFORMATION ONLY AND THE CITY OF RIVERSIDE IS NOT RESPONSIBLE FOR THEIR ACCURACY.
12. THE CONTRACTOR SHALL CALL IN A LOCATION REQUEST TO UNDERGROUND SERVICE ALERT (USA), PHONE NUMBER 1-800-227-2600, TWO WORKING DAYS BEFORE DIGGING. NO CONSTRUCTION PERMIT WILL BE ISSUED BY THE PUBLIC WORKS DEPARTMENT INVOLVING EXCAVATION FOR UNDERGROUND FACILITIES UNLESS THE APPLICANT HAS BEEN PROVIDED AN INQUIRY IDENTIFICATION NUMBER BY USA.
13. NO PERSON SHALL PERFORM ANY CONSTRUCTION ACTIVITY OR INSTALL ANY OBJECTS WITHIN THE PUBLIC RIGHTS-OF-WAY OR EASEMENTS OF THE CITY OF RIVERSIDE WITHOUT A VALID CONSTRUCTION PERMIT OR A STREET OPENING PERMIT OR AN ENCROACHMENT PERMIT ISSUED BY THE CITY'S PUBLIC WORKS DEPARTMENT.

LENGEND

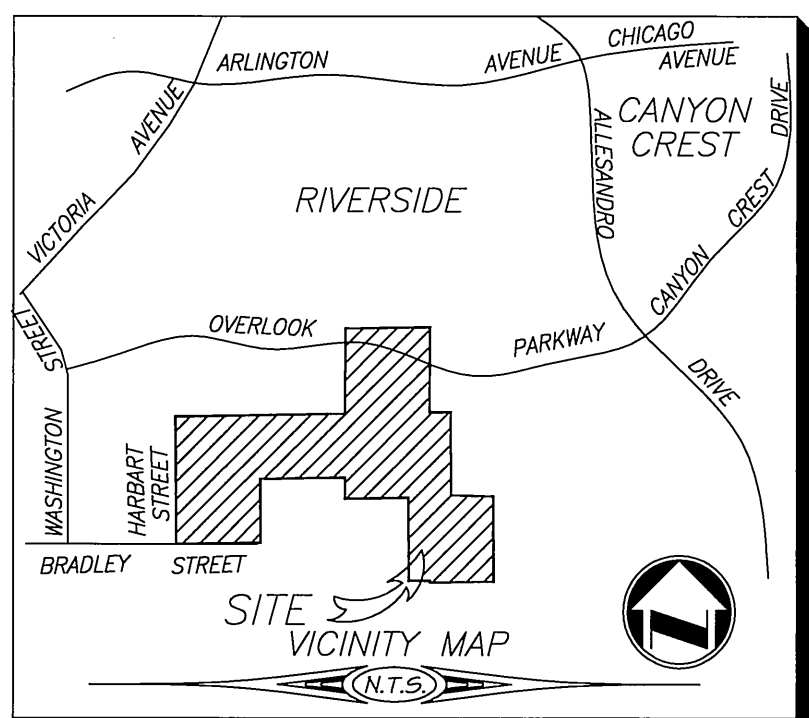
- C.....CENTERLINE
- R/W.....RIGHT OF WAY
- MH.....MANHOLE
- FM.....FORCE MAIN
- S.....SEPTIC

CONSTRUCTION NOTES + QUANTITY

- | | |
|--|--------|
| ① CONSTRUCT 4" DIA. P.V.C. SEWER FORCE MAIN, SCH 80 CONFORMING TO AWWA C900, PER CITY OF RIVERSIDE STD., CASE II BEDDING | 878 LF |
| ② CONSTRUCT MANHOLE PER C/RIV. STD. DWG. 500 | 1 EA |
| ③ CONSTRUCT PRECAST CONCRETE FORCE MAIN CLEANOUT PER CITY OF RIVERSIDE STANDARD DRAWING NO. 559 (4" PIPE) | 1 EA |
| ④ CONSTRUCT UNDER SIDEWALK DRAIN PER CITY OF RIVERSIDE STANDARD DRAWING NO. 411, W=3.0' | 2 EA |
| ⑤ CONSTRUCT DRIVEWAY APPROACH PER CITY OF RIVERSIDE STANDARD DRAWING NO. 302, W=10.0' | 1 EA |



CASE II BEDDING PER CITY OF RIVERSIDE STD. 452
NOT TO SCALE



Underground Service Alert
Call: TOLL FREE
1-800-227-2600
TWO WORKING DAYS BEFORE YOU DIG

CITY OF RIVERSIDE BUSINESS TAX ACCT.#058833 EXP-1/1/07
PLANS PREPARED BY
adkan ENGINEERS
CIVIL ENGINEERING-SURVEYING-PLANNING
6820 AIRPORT DRIVE, RIVERSIDE, CA 92504
TEL: (951) 688-0241 FAX: (951) 688-0599
DATE: 2/14/06
UNDER THE SUPERVISION OF: [Signature]
R.C.E. 25390 6/30/07

BENCHMARK: F7 - K3
CITY OF RIVERSIDE REFERENCE LL477,
P.K. NAIL AND CITY ENGINEER TAG IN THE
BASE OF A STREET LIGHT ALONG THE SOUTHERLY
CURB OF OVERLOOK PARKWAY 175 FEET EAST
OF CHATEAU RIDGE DRIVE, TRANSFER FROM
77-C2 BY CITY SURVEY CREW 6/10/2002.
ELEVATION: 1426.960

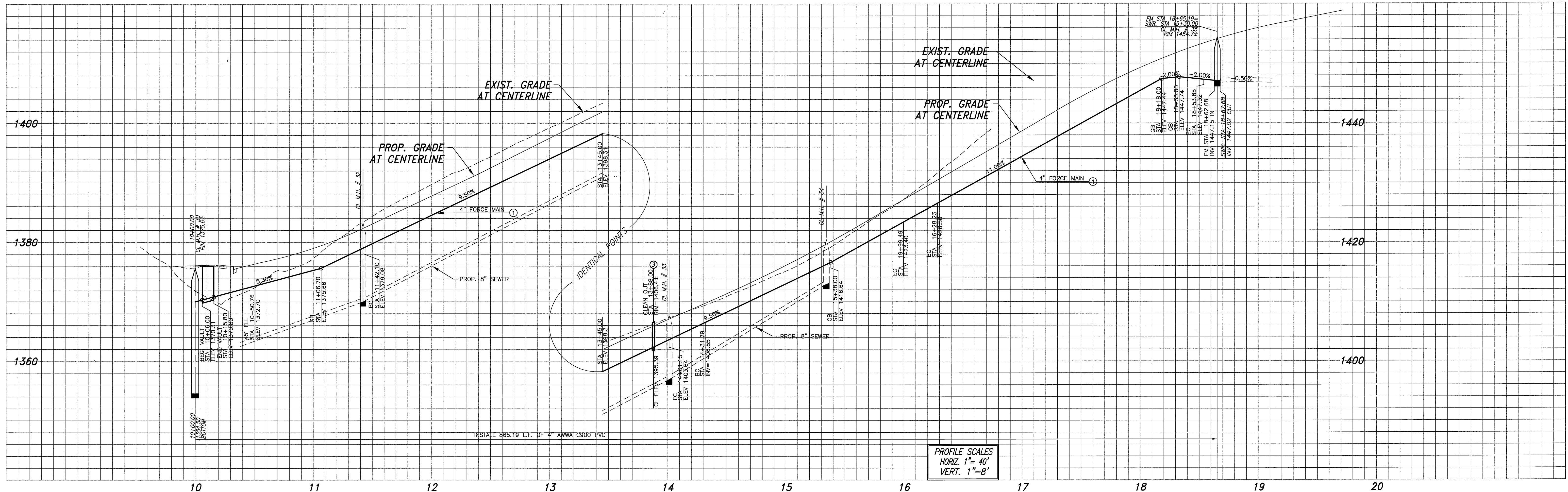
Detail Revisions per Field Change	
MARK	REVISIONS
DESIGNED BY: RICK	DRAWN BY: BRYAN
CHECKED BY: C	

CITY OF RIVERSIDE PUBLIC WORKS DEPARTMENT

APPROVED BY	DATE	BY	APPROVED BY
PRINCIPAL ENGINEER	2/14/06	[Signature]	[Signature]
PARK DEPARTMENT			CITY ENGINEER
TRAFFIC DIVISION			
PLANNING DEPARTMENT			
STREET SERVICES			

DATE: 2/22/06

SEWER IMPROVEMENT PLAN	PW04-0923
TRACT 29515	S-1928
4" FORCE MAIN AND PUMP STATION INDEX MAP AND GENERAL NOTES	SHEET 1 of 6
A.P.N. 243-200-007, 243-220-001, 011, 015, 017 243-230-001, 002, 021, 022, 024	J.N. 6500
HORIZ. SCALE: AS NOTED	VERT. SCALE: AS NOTED



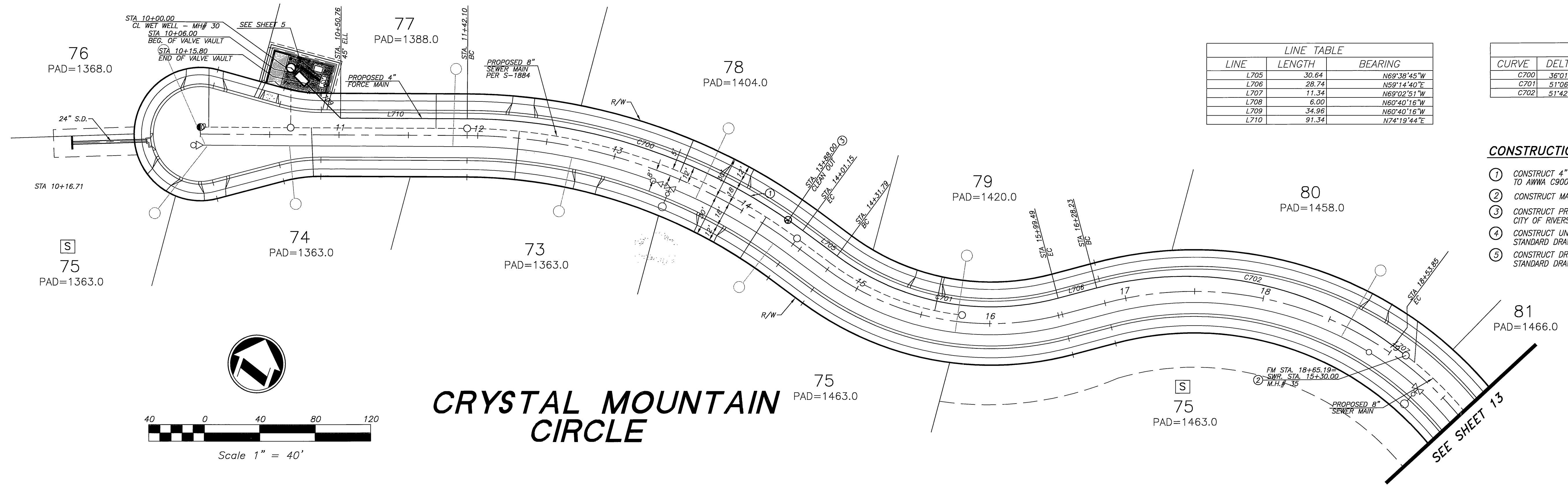
PROFILE SCALES
 HORIZ. 1" = 40'
 VERT. 1" = 8'

LINE TABLE		
LINE	LENGTH	BEARING
L705	30.64	N69°38'45"W
L706	28.74	N59°14'40"E
L707	11.34	N69°02'51"W
L708	6.00	N60°40'16"W
L709	34.96	N60°40'16"W
L710	91.34	N74°19'44"E

CURVE TABLE				
CURVE	DELTA	RADIUS	LENGTH	TANGENT
C700	36°01'31"	412.00	259.05	133.97
C701	51°06'35"	188.00	167.70	89.89
C702	51°42'28"	250.00	225.62	121.15

CONSTRUCTION NOTES

- CONSTRUCT 4" DIA. P.V.C. SEWER FORCE MAIN, SCH 80 CONFORMING TO AWWA C900, PER CITY OF RIVERSIDE STD., CASE II BEDDING
- CONSTRUCT MANHOLE PER C/RV. STD. DWG. 500
- CONSTRUCT PRECAST CONCRETE FORCE MAIN CLEANOUT PER CITY OF RIVERSIDE STANDARD DRAWING NO. 559 (4" PIPE)
- CONSTRUCT UNDER SIDEWALK DRAIN PER CITY OF RIVERSIDE STANDARD DRAWING NO. 411, W=3.0'
- CONSTRUCT DRIVEWAY APPROACH PER CITY OF RIVERSIDE STANDARD DRAWING NO. 302, W=10.0'



CRYSTAL MOUNTAIN CIRCLE



Underground Service Alert
 Call: TOLL FREE
 1-800-227-2600
 TWO WORKING DAYS BEFORE YOU DIG

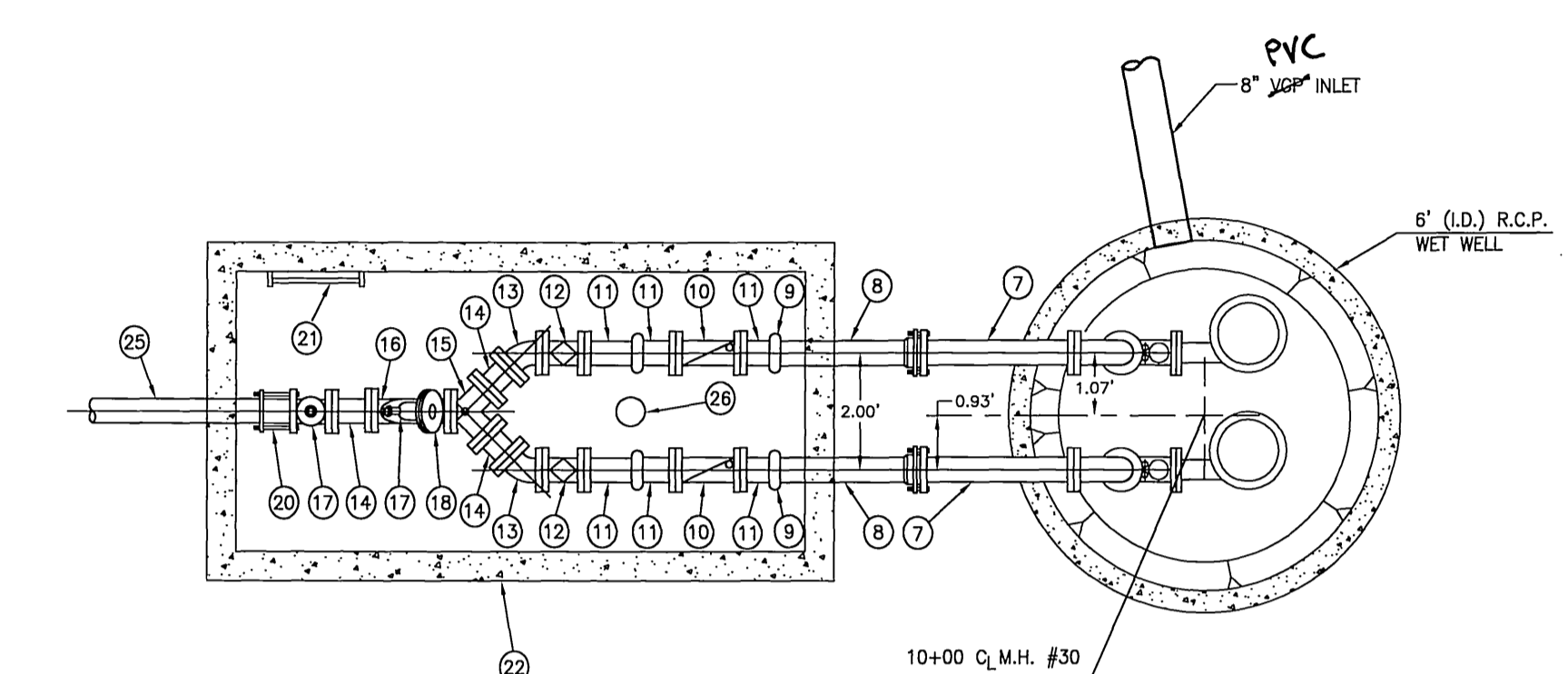
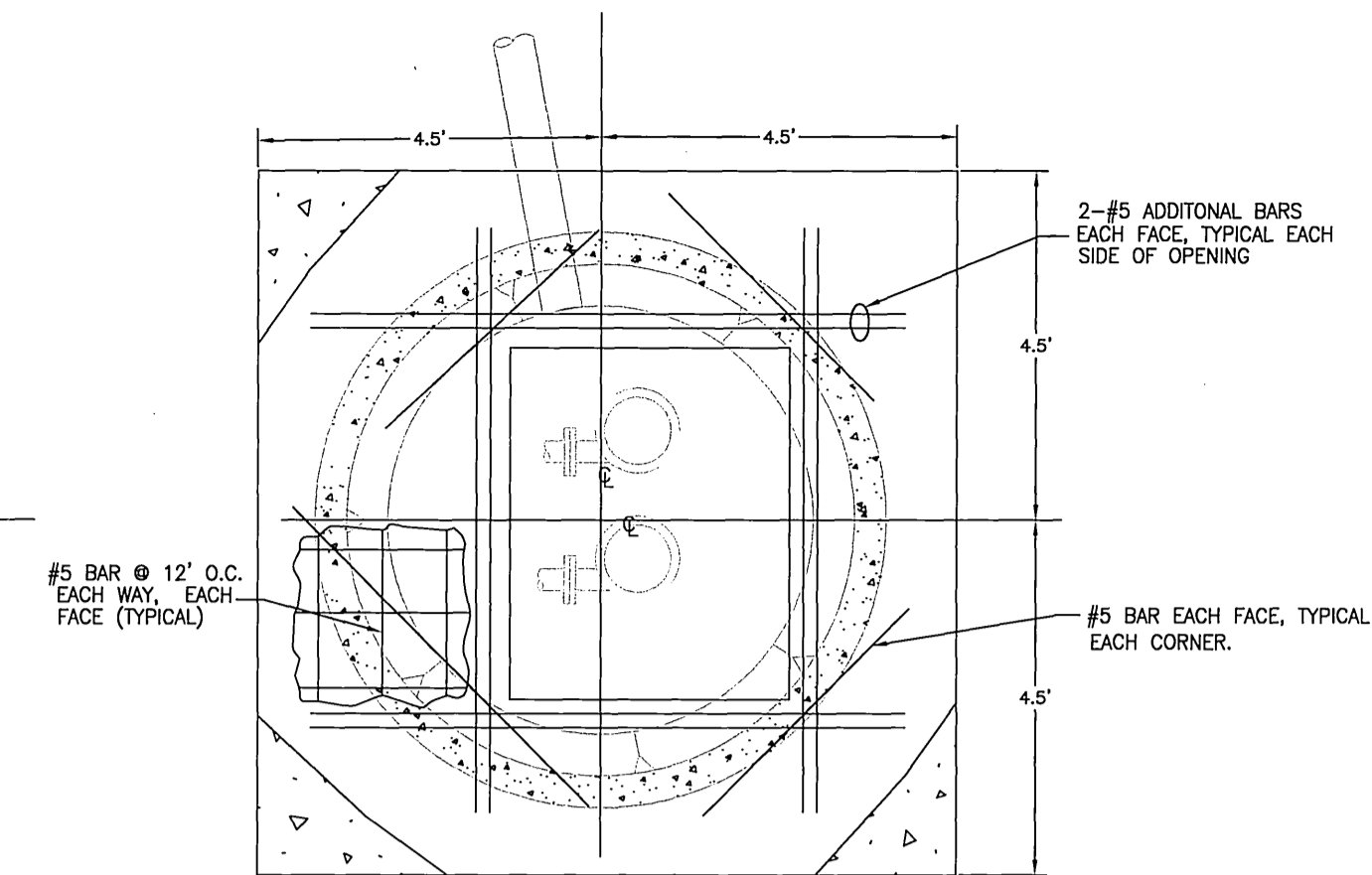
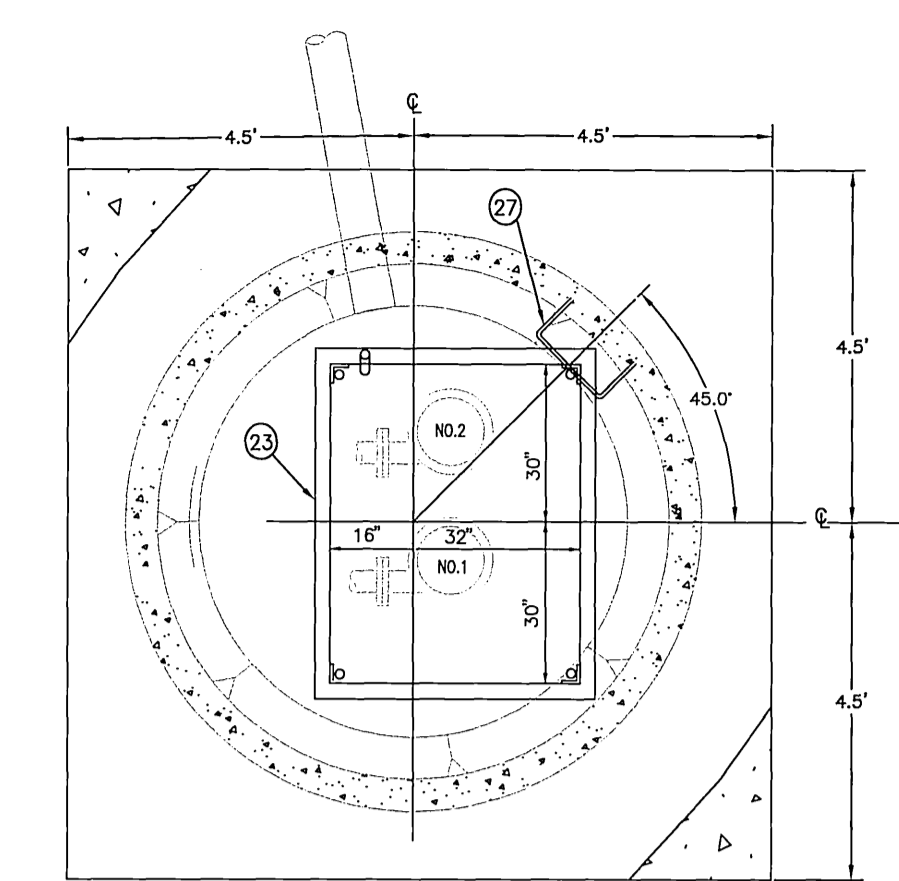
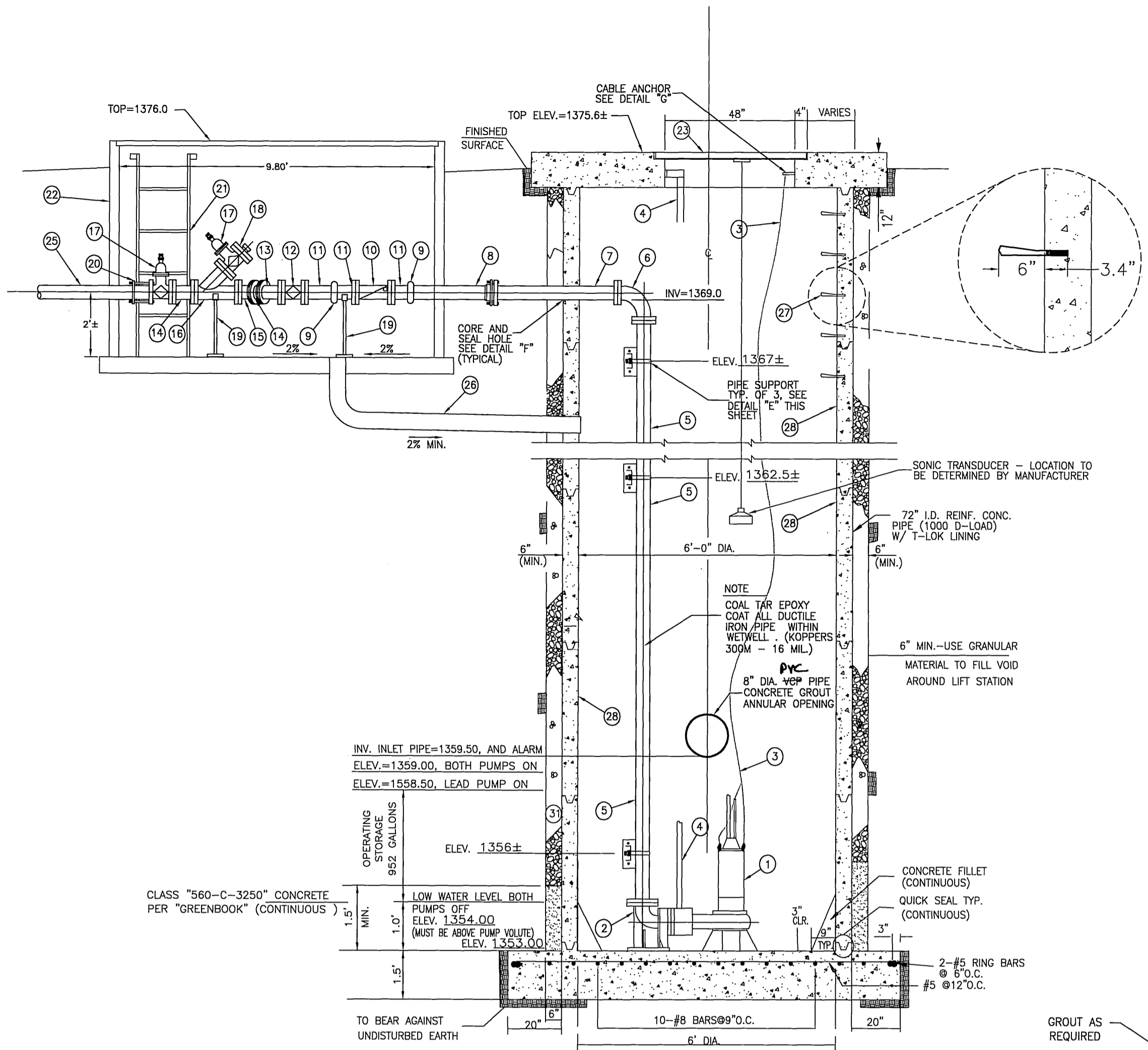
CITY OF RIVERSIDE BUSINESS TAX ACCT.#058833 EXP.1/1/07
 PLANS PREPARED BY
adkan ENGINEERS
 CIVIL ENGINEERING • SURVEYING • PLANNING
 6820 AIRPORT DRIVE, RIVERSIDE, CA 92504
 TEL: (951) 688-0241 FAX: (951) 688-0599
 DATE: 3/14/06
 UNDER THE SUPERVISION OF
 R.D.E. 53390 6/30/07

BENCHMARK: F7 - K3
 CITY OF RIVERSIDE REFERENCE LL4777.
 PK NAIL AND CITY ENGINEER TAG IN THE
 BASE OF A STREET LIGHT ALONG THE SOUTHERLY
 CURB OF OVERLOOK PARKWAY 175 FEET EAST
 OF CHATEAU RIDGE DRIVE, TRANSFER FROM
 F7-K3 BY CITY SURVEY CREW 6/10/2002.
 ELEVATION: 1426.960

MARK	REVISIONS	APPR.	DATE

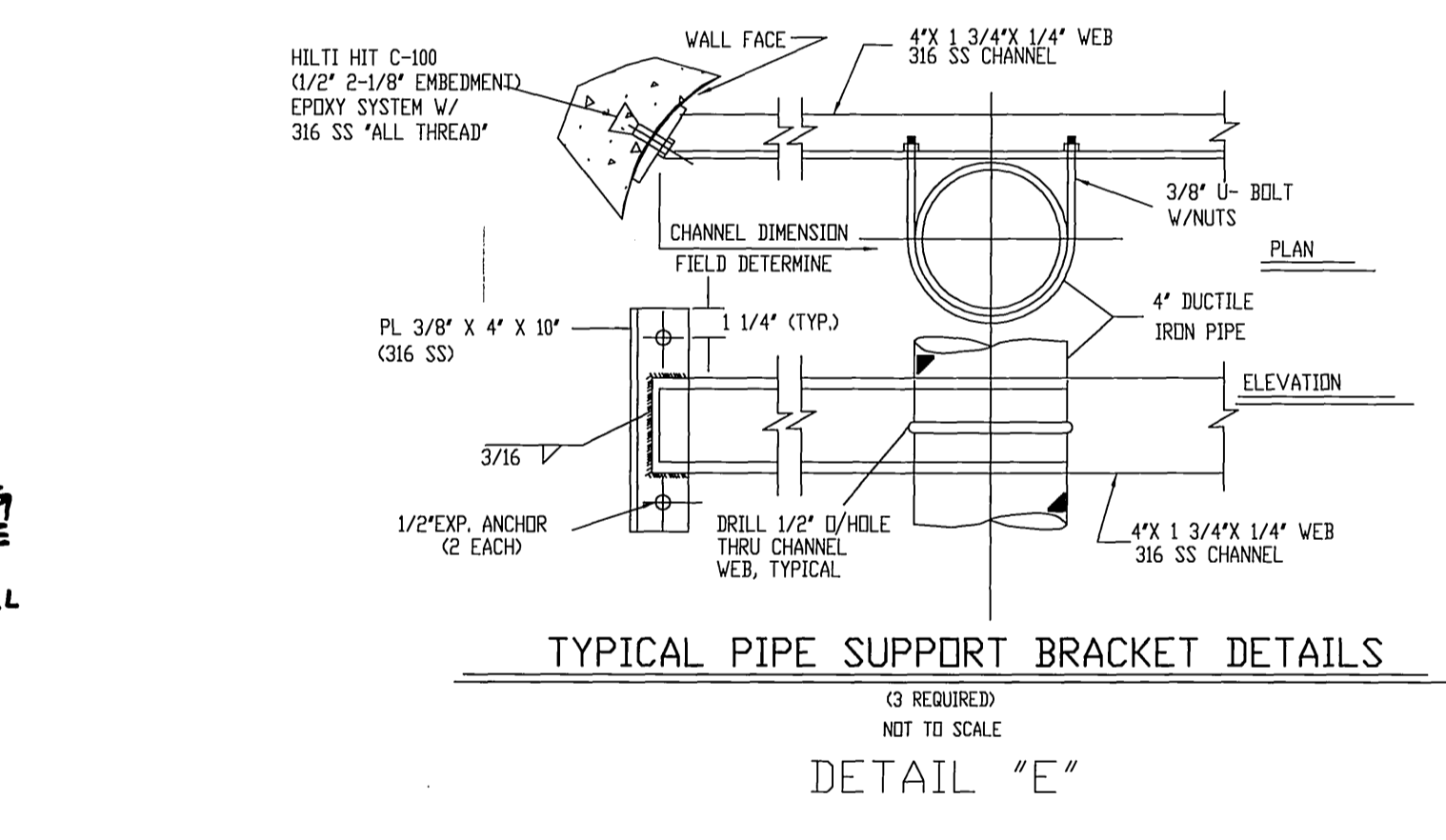
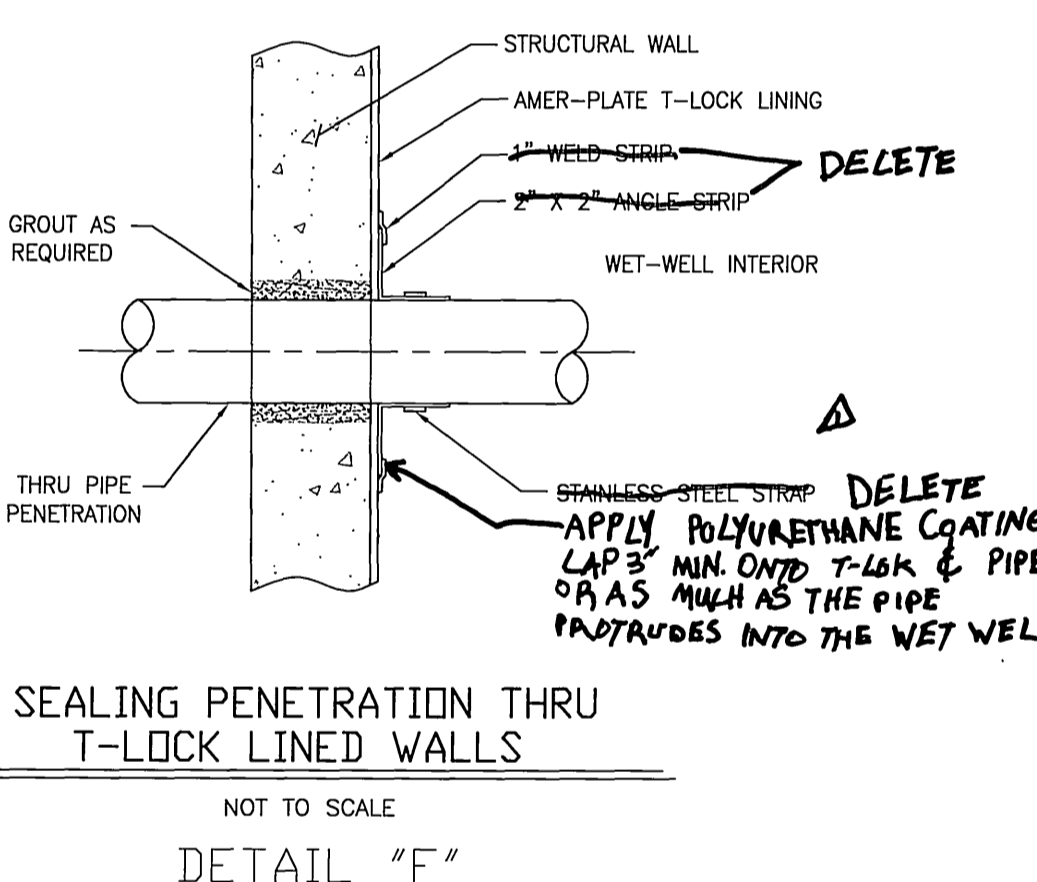
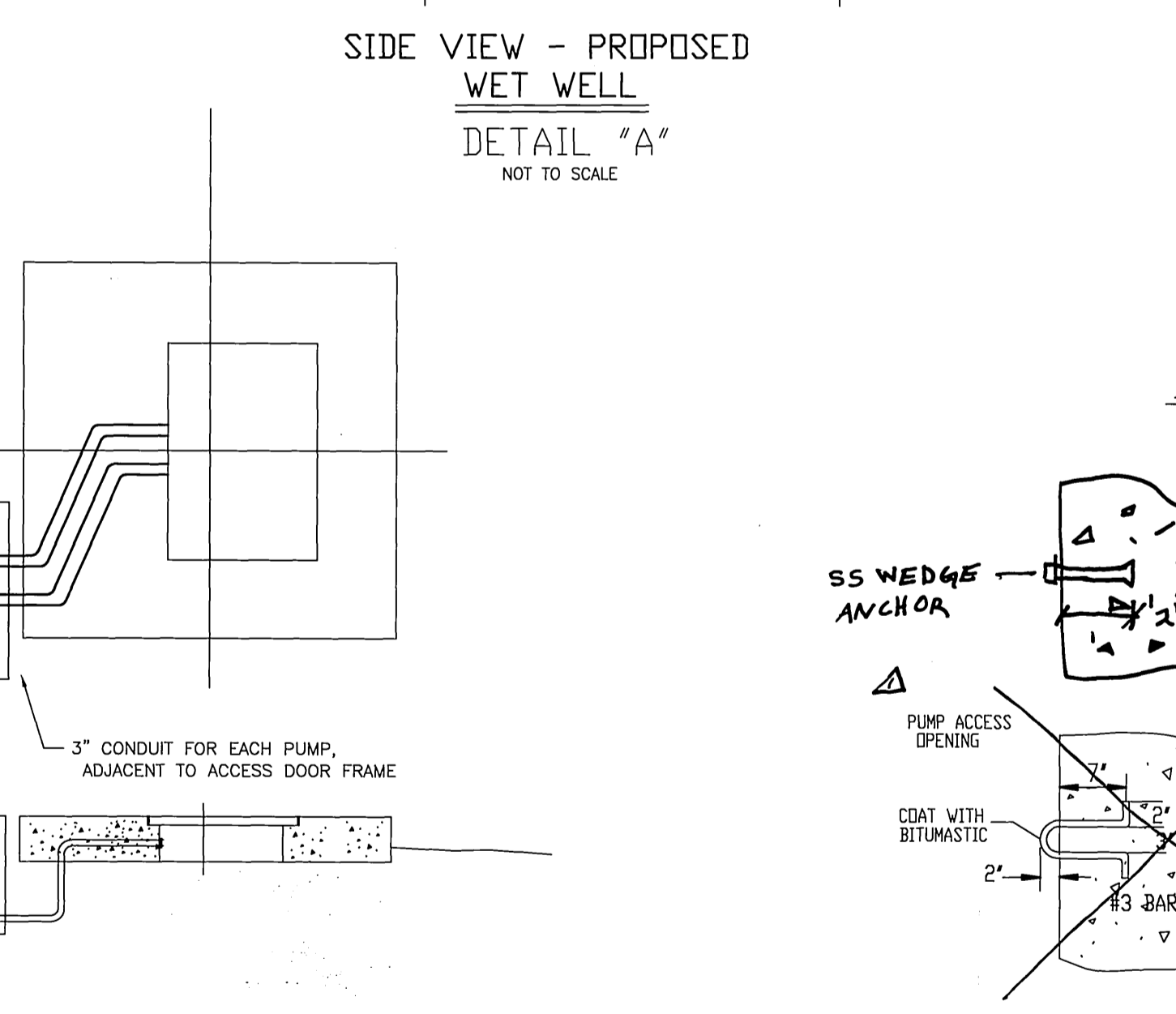
CITY OF RIVERSIDE PUBLIC WORKS DEPARTMENT
 APPROVED BY: [Signature]
 DATE: 2/2/06
 PRINCIPAL ENGINEER
 PARK DEPARTMENT
 TRAFFIC DIVISION
 PLANNING DEPARTMENT
 STREET SERVICES

SEWER IMPROVEMENT PLAN
TRACT 29515
CRYSTAL MOUNTAIN CIRCLE - FORCE MAIN
 A.P.N. 243-200-007, 243-220-001, 011, 015, 017
 243-230-001, 002, 021, 022, 024
 PW04-0923
S-1928
 SHEET 2 OF 6
 J.N. 6500
 HORIZ. SCALE: 1" = 40' VERT. SCALE: 1" = 8'



ABBREVIATIONS:
O.D. - OUTSIDE DIAMETER
I.D. - INSIDE DIAMETER
O.C. - ON CENTER
O.A.E. - OR APPROVED EQUAL
INV. - INVERT
N.P.T. - NATIONAL PIPE THREAD
P.V.C. - POLYVINYL CHLORIDE
N.E.C. - NATIONAL ELECTRIC CODE

NOTE:
CONTRACTOR SHALL OBTAIN SERVICES OF PUMP MANUFACTURER'S ENGINEERING REPRESENTATIVE TO REVIEW AND APPROVE INSTALLATION OF PUMPS.
CONTRACTOR SHALL DEMONSTRATE REMOVAL AND REPLACEMENT OF BOTH PUMPS AS PART OF INSTRUCTION OF OWNER'S PERSONNEL.



MATERIALS DESCRIPTION		NOTE: O.A.E. (OR APPROVED EQUAL)
1	SUBMERSIBLE SEWAGE PUMP TDH 108' GPM 80 RPM 1750 HP #8 25	
2	MATING 90° ELBOW FOR SLIDE - AUTO COUPLING	
3	1/4" X 5/16" STAINLESS STEEL NYLON COVERED LIFTING CABLE WITH STAINLESS STEEL EYEBOLT	
4	1 1/2" SCHEDULE 40 316S.S. STAINLESS STEEL PIPE GUIDE RAILS, AS SUPPLIED BY PUMP MFG. (TO BE ADJUSTED AS NECESSARY PER PUMP MFG. SPEC.)	
5	4" DUCTILE IRON PIPE WITH FLANGED ENDS, A.N.S.I. CLASS 150	
6	4" X 90° DUCTILE IRON FLANGED ELBOW, CLASS 150 (LONG RADIUS)	
7	4" DUCTILE IRON PIPE, RESTRAINED MECHANICAL JOINT X FLANGED END, CLASS 150	
8	4" DUCTILE IRON PIPE, RESTRAINED MECHANICAL JOINT X VICTAULIC END, CLASS 150	
9	4" VICTAULIC COUPLING	
10	4" SPRING LOADED FLANGED EXTERNAL ARM SWING CHECK VALVE, CLASS 150	
11	4" DUCTILE IRON FLANGED X VICTAULIC SPOOL, CLASS 150	
12	4" FLANGED BALLCENTRIC VALVE, CLASS 150, KEYSTONE (O.A.E.) (FULL DIAM. OPENING)	
13	4" X 45° DUCTILE IRON FLANGED ELBOW, CLASS 150	
14	4" DUCTILE IRON FLANGED SPOOL, CLASS 150	
15	4" X 4" X 4" DUCTILE IRON TRUE WYE (FLANGED), CLASS 150	
16	4" X 4" X 4" DUCTILE IRON 45° WYE (FLANGED), CLASS 150	
17	4" FLANGED PLUG VALVE, CLASS 150	
18	2" X 4" O.D. CAST IRON REDUCING FLANGE, CLASS 150 (WITH 2" TREADED PLUG)	
19	PIPE SUPPORT PER DETAIL C - (THIS SHEET)	
20	4" CAST IRON COUPLING ADAPTER, DRESSER STYLE 127 (O.A.E.)	
21	6.5' GALVANIZED VAULT LADDER PER ALHAMBRA FOUNDARY A-3400 (O.A.E.)	
22	BROOKS PRODUCTS 800 SERIES PRECAST VAULT (57 1/2" W X 117 1/2" L X 80" D INSIDE DIMENSIONS) WITH ARMORED TOP SECTION & BOLT DOWN TOP (4 PIECE TOP) (O.A.E.) INSTALL ON 11'-0" X 6'-0" X 6" THICK CONCRETE SLAB (520-C-2500)	
23	5'-0" WIDE X 4'-0" LONG DOUBLE LEAF ALUMINUM ACCESS DOOR WITH STAINLESS STEEL HARDWARE AND COMPRESSION SPRING OPERATORS, 300 P.S.F. LIVE LOAD, BILCO TYPE "JD" (O.A.E.), INSTALL PER MFG. RECOMMENDATIONS.	
24	BROOKS PRODUCTS 67PB PRECAST PULL BOX (24" X 36" X 24" DEEP) WITH TRAFFIC COVER (O.A.E.)	
25	4" DIA. PVC SEWER MAIN, SCH 80 PER AWWA C900	
26	4" PVC DRAIN PIPE	
27	1/2" DIA. ENCAPSULATED WITH PLASTIC STEEL STEP. PRECAST OR GROUTED IN PLACE @ 15" O.C.	
28	ALL WET WELL INTERIOR CONCRETE TO BE LINED WITH T-LOCK PVC LINING, AVAILABLE FROM AMERON PROTECTIVE LINING PRODUCTS, 201 N. BERRY ST., BREA, CALIFORNIA, (714) 256-7755	

LIFT STATION NOTES:
GENERAL NOTES:
1. ALL HATCHES AND HATCH HARDWARE SHALL BE STAINLESS-STEEL (NOTE ON PLANS).
2. THE INTERIOR OF THE WET WELL NEEDS TO BE CORROSION PROTECTED.
3. THE CONTRACTOR MUST SUBMIT MAINTENANCE AND SPARE PART INFORMATION FOR THE PUMPS, VALVES, AND MECHANICAL COMPONENTS. MECHANICAL COMPONENTS MUST HAVE SECTION VIEWS, EXPLODED VIEWS, AND A COMPLETE PARTS LISTING. THE NAME, ADDRESS AND TELEPHONE NUMBER FOR ALL SUPPLIERS MUST BE PROVIDED.
4. THE CONTRACTOR MUST PROVIDE MANUFACTURED SPARE PARTS TO THE CITY.
5. THREE PHASE POWER IS REQUIRED FOR LIFT STATION (480 VOLT).
6. THE PUMP MOTORS MUST BE SIZED NOT TO EXCEED THEIR RATED HORSE POWER AT ANY POINT ON THE PUMP CURVE.
7. THE CONTRACTOR MUST PROVIDE A 60' (MIN.) JUMPER FROM THE CONTROL PANEL TO THE GENERATOR FOR EMERGENCY POWER CONNECTION. ACTUAL LENGTH WILL BE DETERMINED BY AVAILABILITY OF GENERATOR POWER.

Underground Service Alert
Call: TOLL FREE 1-800-227-2600
TWO WORKING DAYS BEFORE YOU DIG

adkan ENGINEERS
CIVIL ENGINEERING • SURVEYING • PLANNING
6820 AIRPORT DRIVE, RIVERSIDE, CA 92504
TEL: (951) 888-0241 FAX: (951) 888-0599
DATE: 1/14/06
UNDER THE SUPERVISION OF: R.C.E. 53390 6/30/07

BENCHMARK: F7 - K3
CITY OF RIVERSIDE REFERENCE LL477.
PK NAIL AND CITY ENGINEER TAG IN THE BASE OF A STREET LIGHT ALONG THE SOUTHERLY CURB OF OVERLOOK PARKWAY 175 FEET EAST OF CHATEAU RIDGE DRIVE. TRANSFER FROM F7-02 BY CITY SURVEY CREW 6/10/2002.
ELEVATION: 1426.960

Detail Revisions Per Field Changes

MARK	REVISIONS	APPR.	DATE

DESIGNED BY: RICK, DRAWN BY: BRYAN, CHECKED BY: C-

CITY OF RIVERSIDE PUBLIC WORKS DEPARTMENT

APPROVED BY	DATE	BY	APPROVED BY
PRINCIPAL ENGINEER			
PARK DEPARTMENT			
TRAFFIC DIVISION			
PLANNING DEPARTMENT			
STREET SERVICES			

DATE: 2/6/06

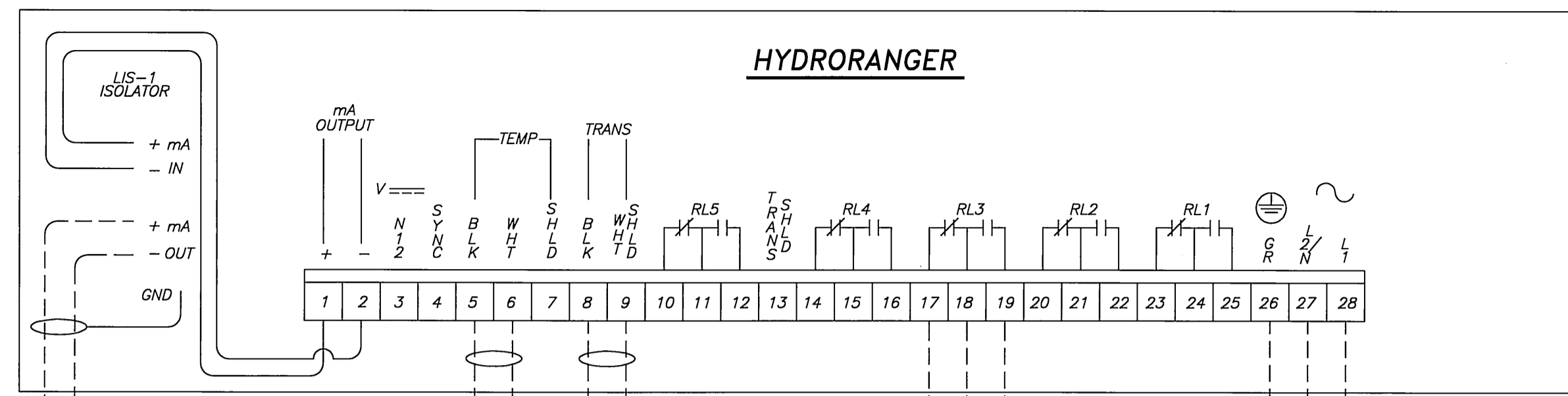
SEWER IMPROVEMENT PLAN
TRACT 29515
SEWER PUMP STATION

A.P.N. 243-200-007, 243-220-001, 011, 015, 017
243-230-001, 002, 021, 022, 024

PW04-0923
S-1928
SHEET 3 OF 6
J.N. 6500

HORIZ. SCALE: SCALE: AS NOTED VERT. SCALE:





MILLTRONICS HYDRORANGER, CSA APPROVED TYPE 4X RATED (SIMILAR TO EEMAC 4, NEMA 4X & IP65 RATINGS), POLYCARBONATE ENCLOSURE

ISOLATED 4 TO 20 mA OUTPUT, 600 OHMS MAX LOAD, SEE NOTES 1 & 5 (IF NOT USED, SEE D'T'L C)

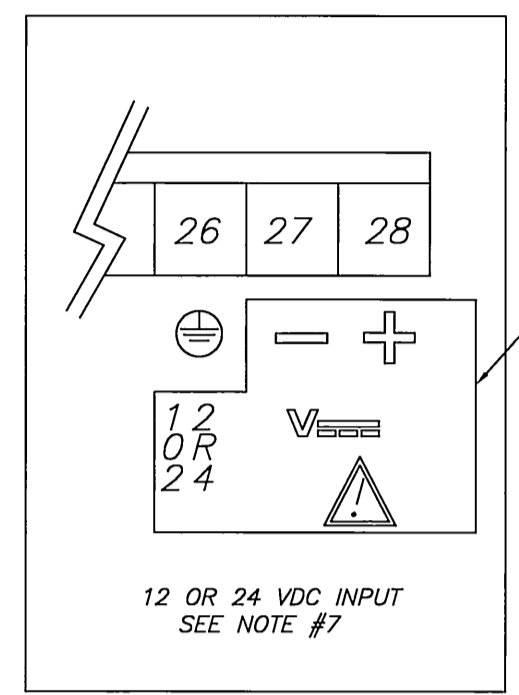
2 WIRE TWISTED PAIR C/W SHIELD, BY CONTRACTOR

TO TEMP SENSOR, SEE NOTES 1 & 6 (IF USED)

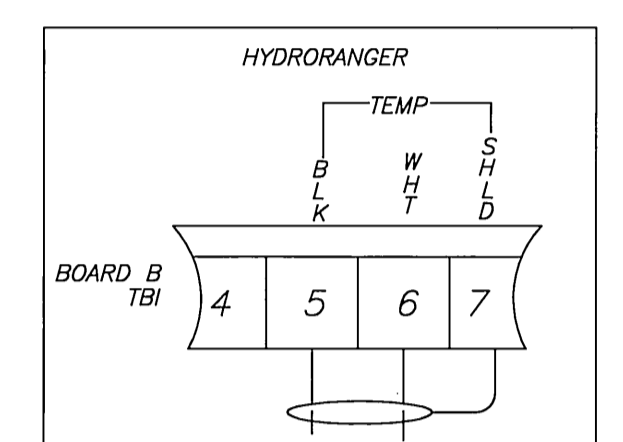
TO TRANSDUCER, SEE NOTES 1 & 3

ALARM/CONTROL RELAY, RELAY CONTACTS 1 FORM "C" SPOT, RATED AT 5A AT 220 VAC, NON INDUCTIVE, TYP. OF 5, SEE NOTES 1 & 4

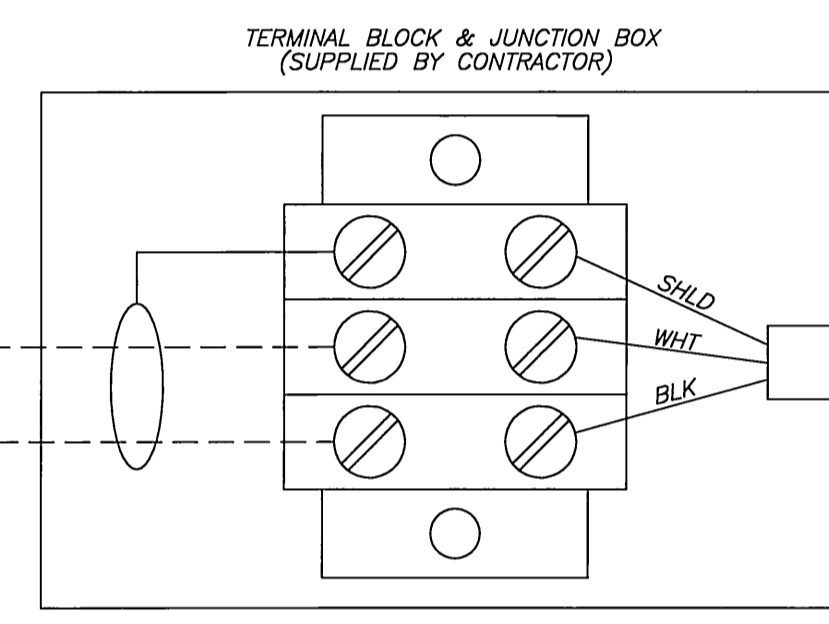
100/115/200/230 VAC 50/60 Hz, 15 VA SEE NOTES 1 & 2



DC VOLTAGE SUPPLY STICKER, ON MOTHERBOARD

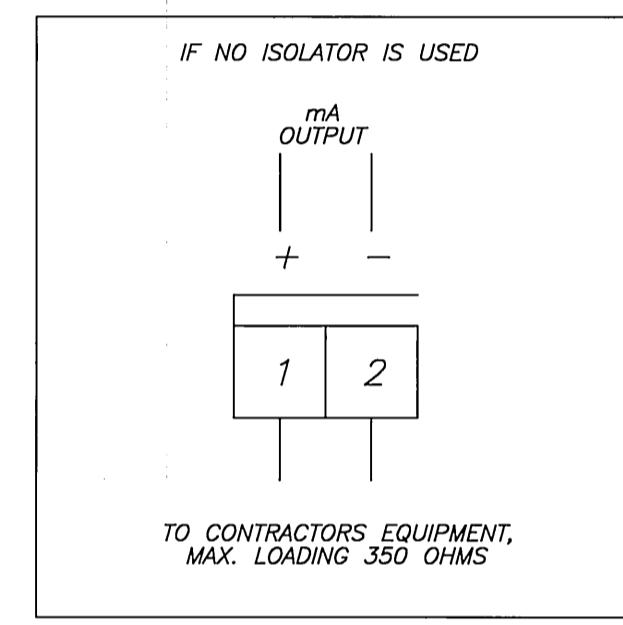


SEE INSTRUCTION MANUAL FOR PROPER OPERATION

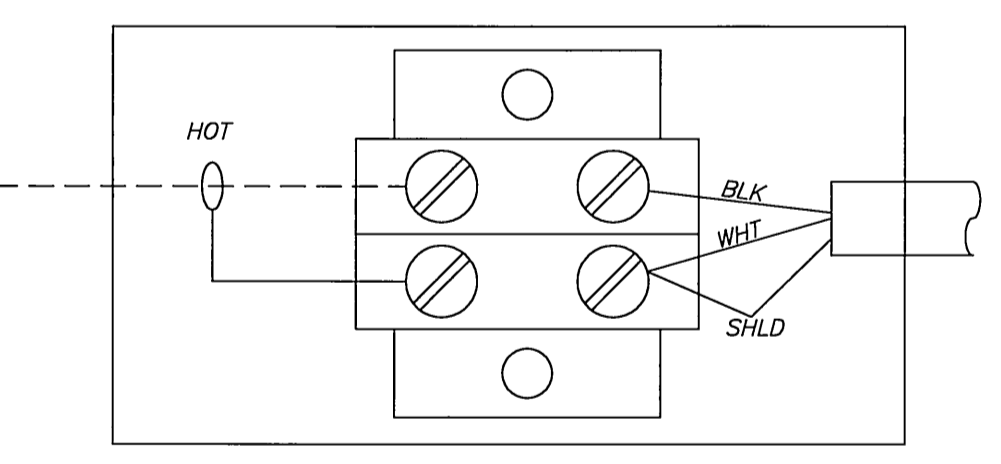


DETAIL "B"

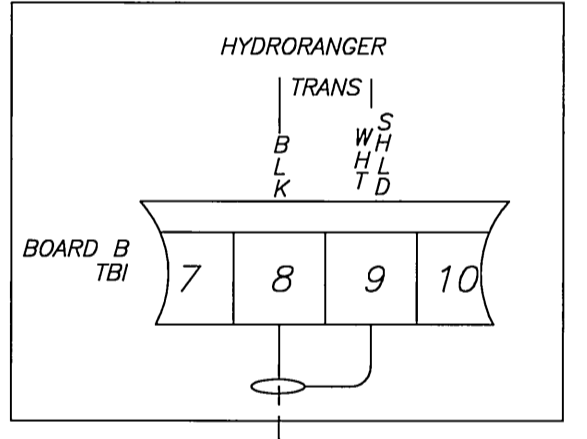
BELDEN 8760 CABLE OR EQUIVALENT BY CONTRACTOR, MAX RUN 336 m (1200 FT.), SEE NOTES 1 & 6



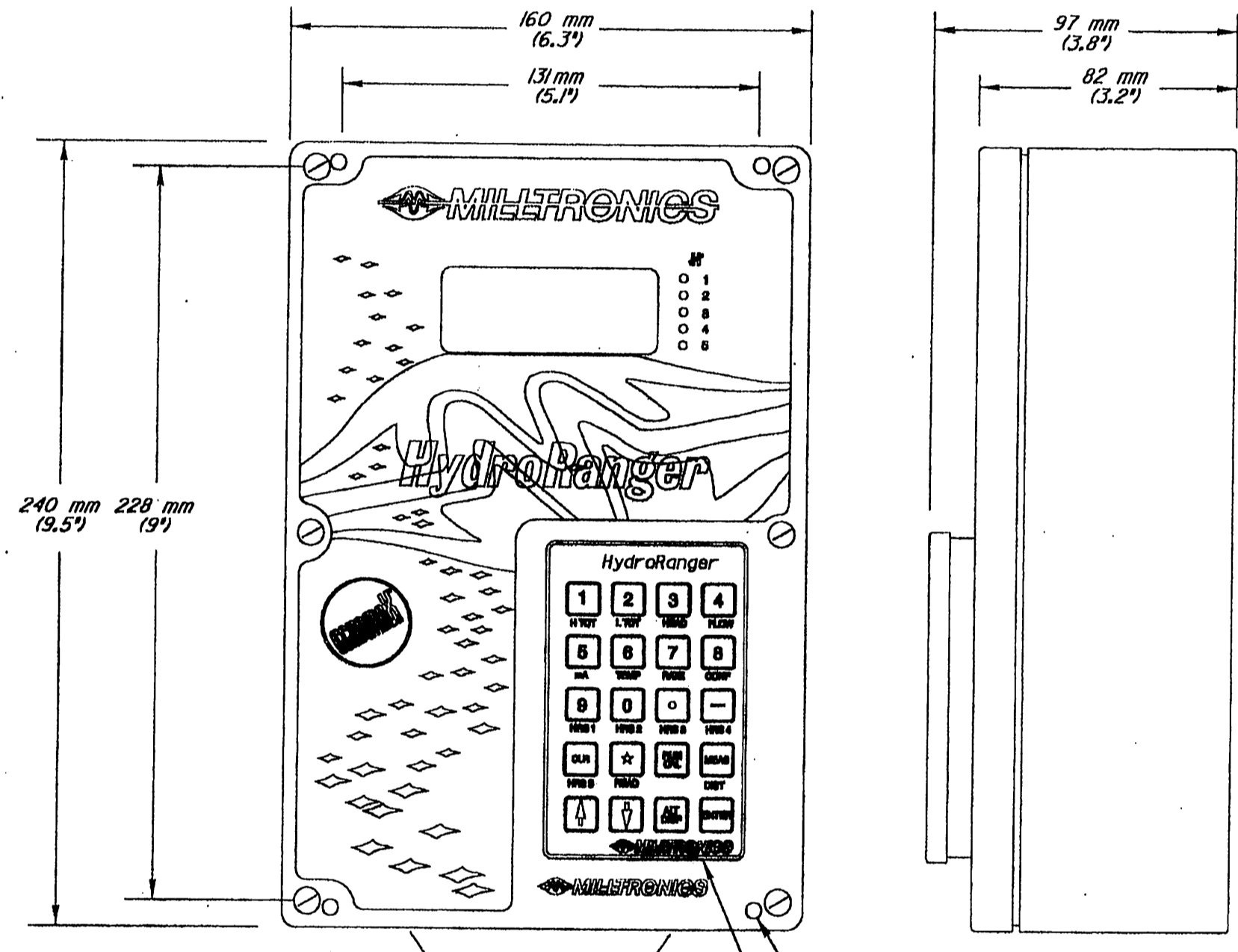
DETAIL "C"



DETAIL "A"



RG-62U COAXIAL CABLE MAX RUN 336 m (1200 FT.), BY CONTRACTOR, TOTAL CABLE RUN MUST NOT EXCEED 16 MICROFARADS IN CAPACITANCE, SEE NOTES 1 & 3



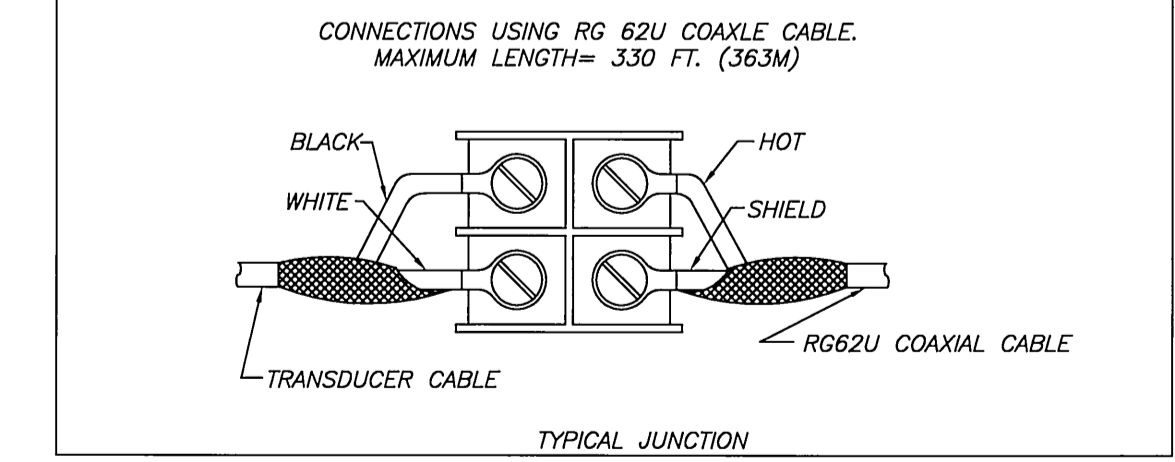
SUITABLE LOCATION FOR CONDUIT ENTRANCES IT IS RECOMMENDED USING A PUNCH FOR MAKING HOLES IN THE ENCLOSURE.

4.3 mm (0.170") DIA. MOUNTING HOLES, 4 PLACES

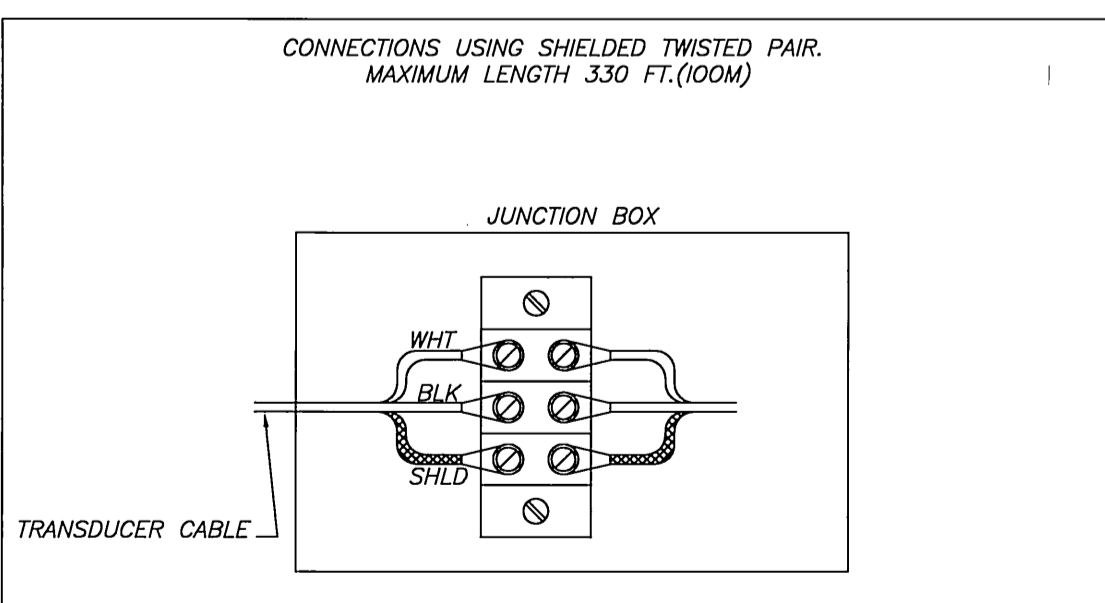
HAND CALIBRATOR, REMOVABLE

HYDRORANGER TO BE MOUNTED IN MCC

1. TRANSDUCER CABLE CONNECTIONS MAY BE SOLDERED OR ASSEMBLED ON A TERMINAL STRIP.
2. ALL PULL BOXES, CONDUITS, AND JUNCTION BOXES MUST BE GROUNDED TO THE CONDUIT.
3. TRANSDUCER CABLE MUST BE RUN IN A GROUNDED CONDUIT SYSTEM WITH NO OTHER ELECTRICAL CIRCUITS.
4. ROUTE CONDUIT FOR LOWEST EMF INTERFERENCE FROM MOTOR DRIVES, POWER BUSES, ETC.
5. OBSERVE STANDARD WORK PRACTICES, THE NEC, AND LOCAL REGULATIONS.

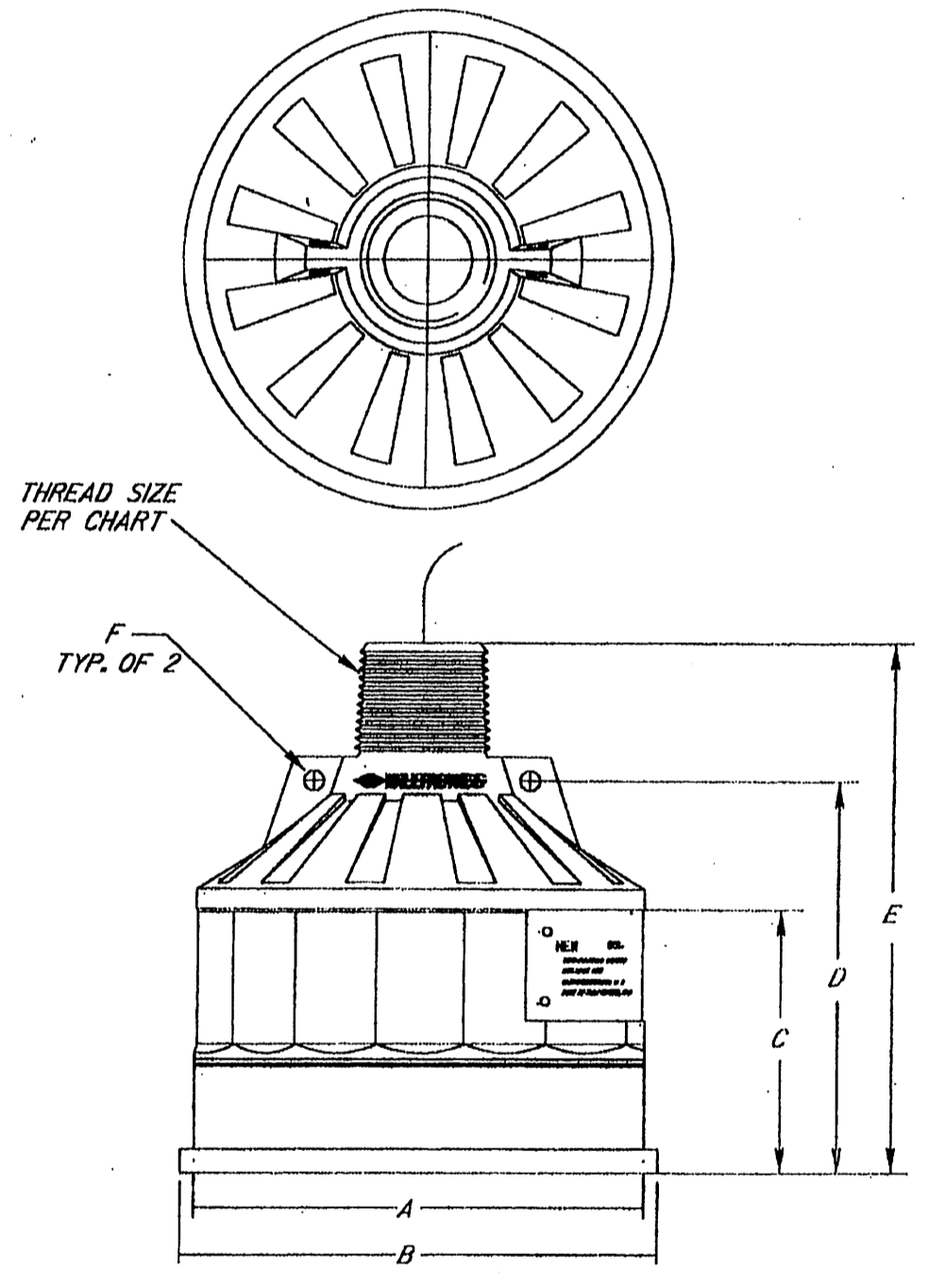


TYPICAL JUNCTION



JUNCTION BOX

CONNECTIONS USING SHIELDED TWISTED PAIR. MAXIMUM LENGTH 330 FT.(100M)



STANDARD TRANSDUCER

TRANSDUCER TYPE	DIMENSIONS [METRIC]						THREAD SIZE	CABLE TYPE
	'a'	'b'	'c'	'd'	'e'	'f'		
XCT-8	3.2 [81.3]	3.45 [87.6]	2.6 [66.0]	3.6 [91.4]	4.8 [121.9]	0.15 [3.8]	1" NPT	LR29248
XCT-12	4.5 [114.3]	4.75 [120.7]	2.6 [66.0]	3.85 [97.8]	5.17 [131.3]	0.20 [5.1]	1" NPT	LR29248
XPS-10	3.2 [81.3]	3.45 [87.6]	2.6 [66.0]	3.6 [91.4]	4.8 [121.9]	0.15 [3.8]	1" NPT	YR40154
XPS-15	4.5 [114.3]	4.75 [120.7]	2.6 [66.0]	3.85 [97.8]	5.17 [131.3]	0.20 [5.1]	1" NPT	YR40154
XPS-30	6.6 [162.6]	6.92 [175.8]	4.58 [116.3]	6.4 [162.6]	7.7 [195.6]	0.20 [5.1]	1.5" NPT	YR40154
XPS-40	7.8 [198.1]	8.10 [205.7]	5.5 [139.7]	7.6 [193.0]	9.15 [232.4]	0.30 [7.6]	1.5" NPT	YR40154



Underground Service Alert

Call: TOLL FREE 1-800-227-2600

TWO WORKING DAYS BEFORE YOU DIG

CITY OF RIVERSIDE BUSINESS TAX ACCT.#058833 EXP.1/1/07

PLANS PREPARED BY **adkan ENGINEERS**

CIVIL ENGINEERING • SURVEYING • PLANNING

6820 AIRPORT DRIVE, RIVERSIDE, CA 92504

TEL: (951) 688-0241 FAX: (951) 688-0599

DATE: 2/14/06 UNDER THE SUPERVISION OF R.C.E. 53390 6/30/07

BENCHMARK: F7 - K3

CITY OF RIVERSIDE REFERENCE LL4777.

PK NAIL AND CITY ENGINEER TAG IN THE BASE OF A STREET LIGHT ALONG THE SOUTHERLY CURB OF OVERLOOK PARKWAY 175 FEET EAST OF CHATEAU RIDGE DRIVE, TRANSFER FROM F7-C2 BY CITY SURVEY CREW 8/10/2002.

ELEVATION: 1426.960

MARK	REVISIONS	APPR.	DATE

DESIGNED BY: RICK DRAWN BY: BRYAN CHECKED BY: C-

CITY OF RIVERSIDE PUBLIC WORKS DEPARTMENT

APPROVED BY: [Signature] DATE: 2/22/06

PRINCIPAL ENGINEER

PARK DEPARTMENT

TRAFFIC DIVISION

PLANNING DEPARTMENT

STREET SERVICES

SEWER IMPROVEMENT PLAN

TRACT 29515

SEWER PUMP STATION

DETAILS

A.P.N. 243-200-007, 243-220-001, 011, 015, 017, 243-230-001, 002, 021, 022, 024

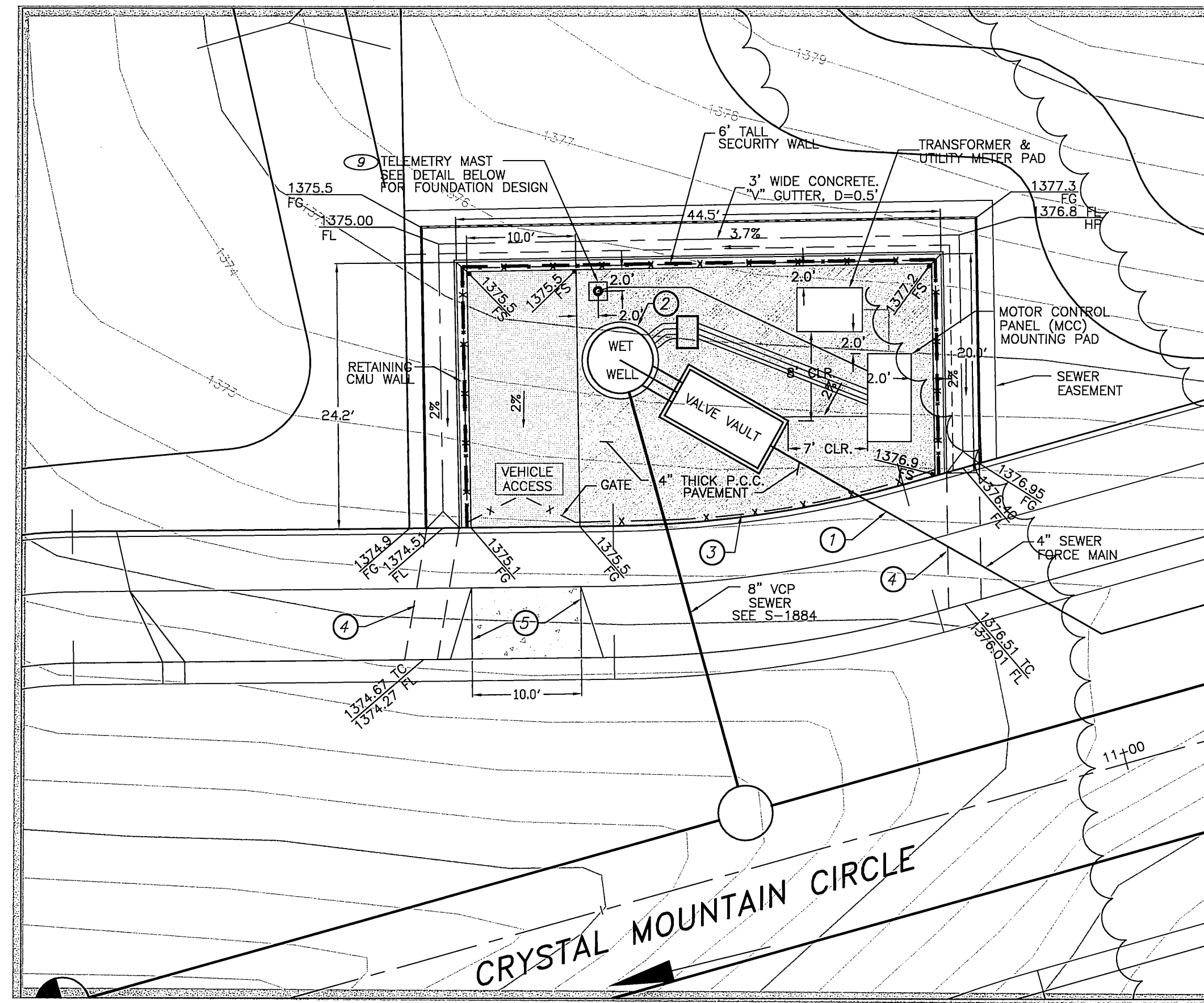
HORIZ. SCALE: VERT. SCALE:

PW04-0923

S-1928

SHEET 4 OF 6

J.N. 6500



LIFT STATION PLAN

GENERAL NOTES:

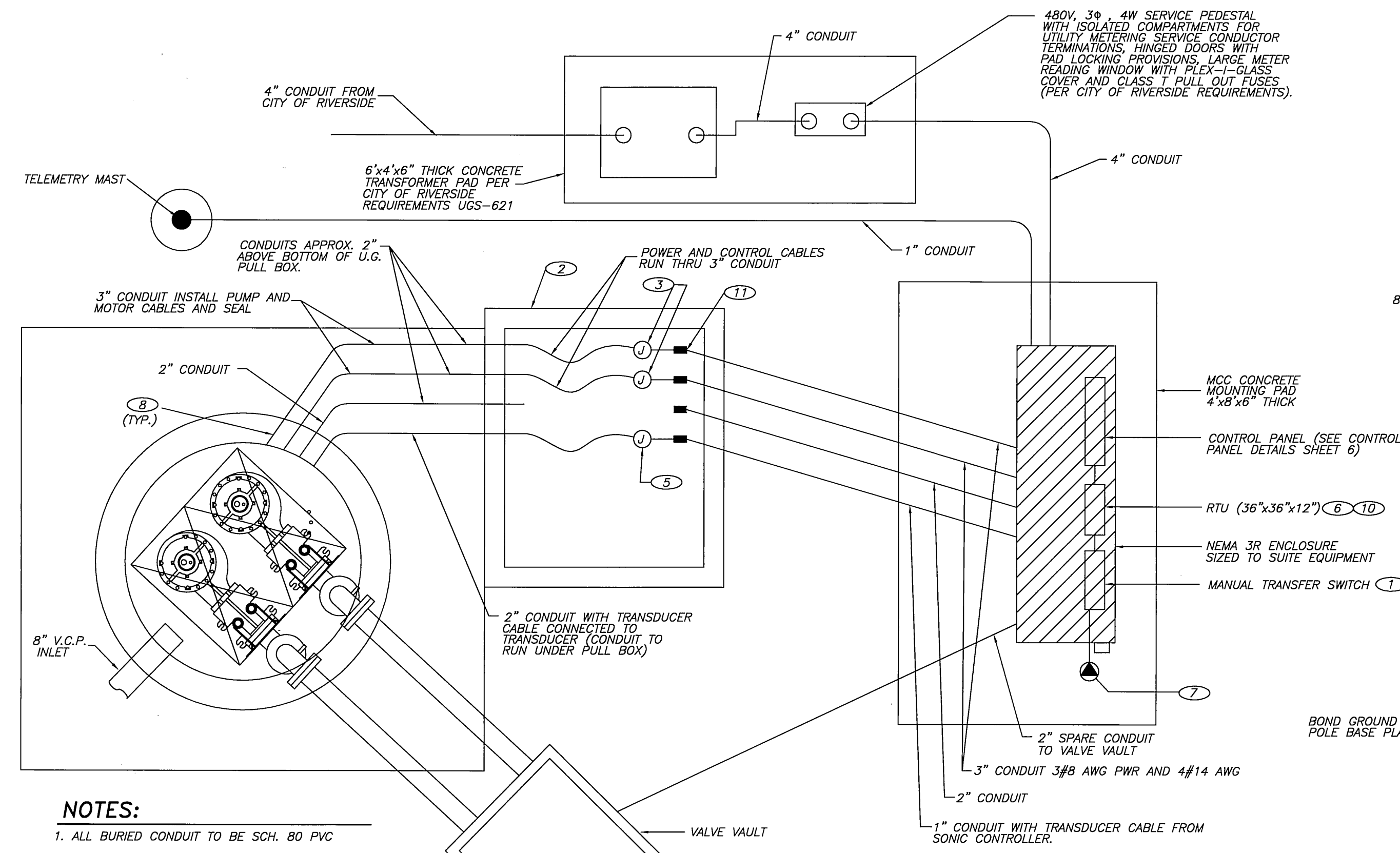
1. PROVIDE ALL NECESSARY CONDUITS AND REQUIRED WIRING FROM CONTROL PANEL TO THE ELECTRICAL EQUIPMENT IN THE WET WELL, AS SHOWN AND AS REQUIRED.
2. TERMINAL BLOCK(S) FOR EQUIPMENT STATUS, FAILURE ALARMS, ETC. ARE TO BE FURNISHED AND INSTALLED AT THE DEVELOPER'S EXPENSE. THE CONTRACTOR SHALL COORDINATE THIS WORK WITH THE CITY OF RIVERSIDE.
3. THE CONTRACTOR MUST SUBMIT MAINTENANCE AND MANUFACTURER'S RECOMMENDED SPARE PARTS FOR ALL ELECTRICAL AND INSTRUMENTATION COMPONENTS. A COMPLETE PARTS LISTING WITH THE NAME, ADDRESS, AND TELEPHONE NUMBER FOR THE SUPPLIES MUST BE PROVIDED.
4. THE CONTRACTOR MUST PROVIDE THE MANUFACTURER'S RECOMMENDED SPARE PARTS TO THE CITY.
5. THE CONTRACTOR SHALL PROVIDE COMPLETE AS-BUILT DRAWINGS OF THE ELECTRICAL SYSTEM. THIS INCLUDES THE GENERAL WIRING AND THE INTERNAL WIRING OF ALL THE CONTROL PANEL COMPONENTS. MOSCAD SPECIFICATIONS WILL BE PROVIDED BY THE CITY. EQUIPMENT TO BE PURCHASED BY THE DEVELOPER AND INSTALLED BY THE CITY APPROVED CONTRACTOR. THE CITY WILL REVIEW AND APPROVE THE DRAWINGS. THE CONTRACTOR WILL MAKE ANY CHANGES AND SUBMIT FINAL SETS TO THE CITY.
6. ALL WIRES MUST BE INDIVIDUALLY TAGGED AT EVERY TERMINATION AND INSIDE EVERY JUNCTION BOX. WIRE NUMBERING AND TAGGING SYSTEMS MUST BE SUBMITTED TO THE CITY FOR REVIEW AND APPROVAL.
7. THE LIFT STATION WET WELL IS A CLASS 1, DIV.1 HAZARDOUS AREA. ALL WORK AND EQUIPMENT MUST CONFORM TO THIS CLASSIFICATION.
8. THE AREA WITHIN THE U.G. PRECAST CONCRETE PULL BOX IS ALSO CLASSIFIED AS A CLASS 1, DIV.1 HAZARDOUS AREA AND IS CONSIDERED AS AN EXTENSION OF THE WELL BY VIRTUE OF THE UNDERGROUND CONDUIT SYSTEMS WHICH ARE TO REMAIN OPEN AND NOT SEALED, FOR THE PURPOSE OF EASILY REMOVING AND INSTALLING THE CABLE SYSTEMS IN THE WET WELL.
9. THE CONTRACTOR SHALL PROVIDE ALL MOUNTING HARDWARE FOR TRANSDUCER, FLOATS, MOUNTING SUPPORTS FOR ALL WET WELL CABLES, ETC.
10. PROVIDE A CODE SIZE GROUND WIRE IN ALL CONDUITS.
11. CONDUIT AND WIRING WITHIN THE CONTROL PANEL IS NOT SHOWN. PROVIDE AND INSTALL AS REQUIRED.
12. PROVIDE AUX. CONTACT BLOCKS FOR H-O-A SWS TO MONITOR SWITCH POSITION.
13. THE CONTRACTOR SHALL REVIEW AND CONFIRM WITH THE CITY THE EQUIPMENT TO BE PROVIDED.
14. CONTRACTOR TO FURNISH AND INSTALL TELEMETRY MAST PER THE REQUIREMENTS DETERMINED BY A RADIO SURVEY PERFORMED AND PAID FOR BY THE DEVELOPER.
15. DEVELOPER SHALL CONTRACT WITH A CITY APPROVED CONTRACTOR TO INSTALL THE MOSCAD RTU AND INTEGRATE INTO THE CITY'S SCADA SYSTEM. (MUST BE A CITY APPROVED CONTRACTOR)

CONSTRUCTION NOTES

1. CONSTRUCT 4" DIA. P.V.C. SEWER FORCE MAIN, SCH 80 CONFORMING TO ANWA C900, PER CITY OF RIVERSIDE STD., CASE II BEDDING
2. CONSTRUCT WET WELL SEE DETAIL ON SHEET 3
3. 6" TALL FENCE IS TO BE BLACK POWER COAT FINISH TUBULAR STEEL.
4. UNDER SIDEWALK DRAIN PER A.P.W.A. STD. PLAN 151-1 TYPE 2 INLET, S=3.0' - SEE STREET PLANS R-3892.
5. DRIVEWAY APPROACH PER CITY OF RIVERSIDE STANDARD DRAWING NO. 302, A=10.0' - SEE STREET PLANS R-3892.

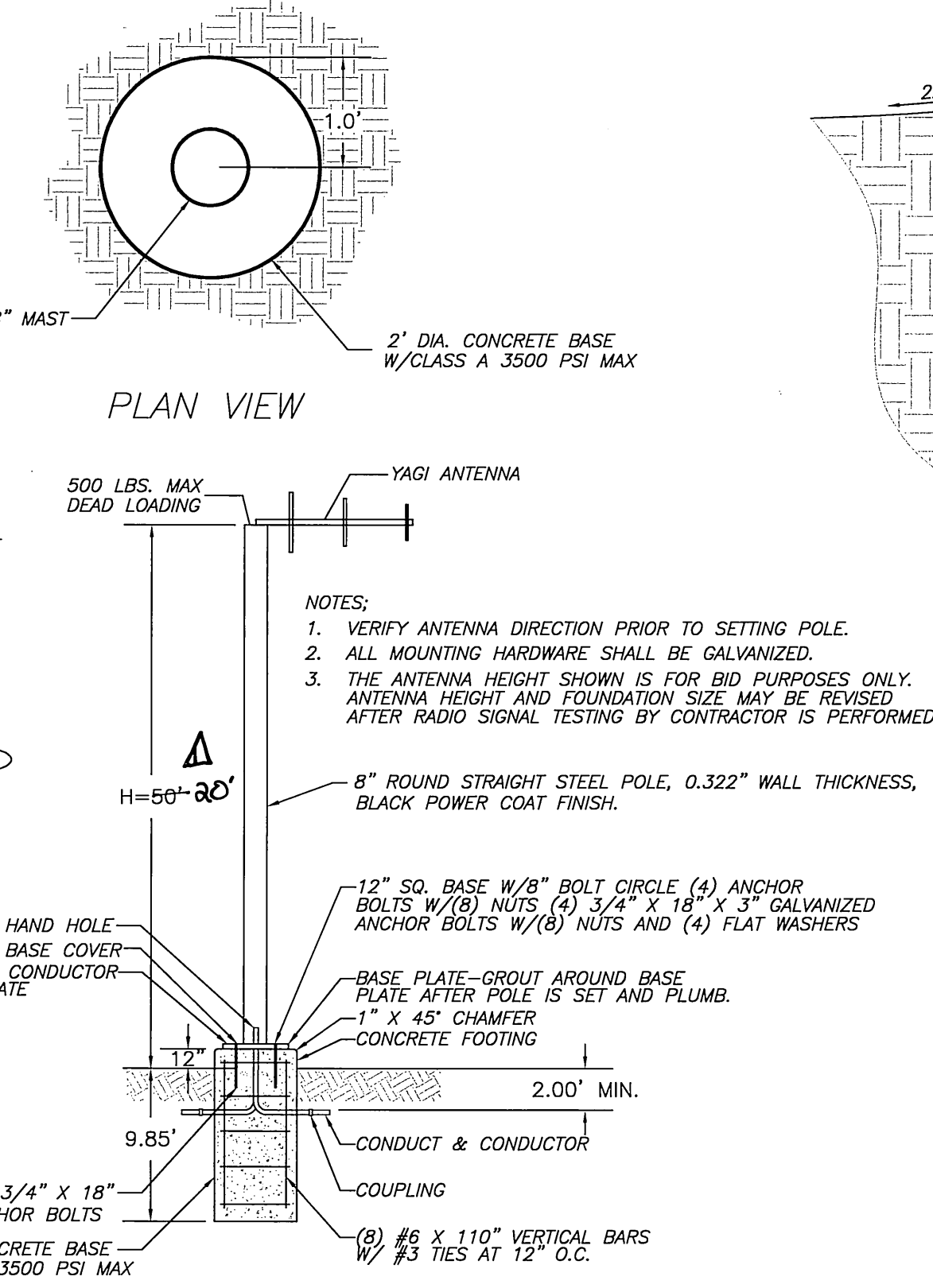
SPECIFIC NOTES:

1. 100AMP, 480V, NON FUSIBLE DOUBLE THROW TRANSFER SWITCH CUTLER HAMMER, TYPE DTK IN NEMA 1 ENCLOSURE.
2. UNDERGROUND PRECAST PULL BOX, 24" Lx36" Wx24" D. BROOKS PRODUCTS OR EQUAL WITH TRAFFIC COVER. PROVIDE 3" MIN. CABLE SLACK (COILED) IN BOX.
3. EXPLOSION PROOF JUNCTION BOX (SIZE AS REQUIRED) CROUSE-HINDS TYPE EJB WITH HINGED COVER AND SUBMERSIBLE RESIN-CAST SPLICES (WIRING, TYP. OF 2). PROVIDE CABLE GRIPS FOR CORDS. (SEE DETAIL THIS SHEET)
4. EXPLOSION PROOF JUNCTION BOX WITH SEALING COVER FOR TRANSDUCER CABLE (NO SPLICES). (SEE DETAIL THIS SHEET)
5. MOTOROLA MOSCAD, PAID FOR BY DEVELOPER, AND INSTALLED BY CONTRACTOR IN A SEPARATE CABINET INSIDE THE CONTROL PANEL.
6. PROVIDE GENERATOR RECEPTACLE, KILLARK 8581/21-407 AND 8581/22-407 PLUG. PROVIDE 60' MIN. SJO POWER CORD.
7. PROVIDE CABLE BUSHINGS FOR CONDUITS INTO WET WELL.
8. CONTRACTOR SHALL PROVIDE SUITABLE YAGI ANTENNA WITH MAST FOR RTU.
9. THE RTU SHALL BE PROVIDED WITH THE MANUFACTURER'S RECOMMENDED 12V BATTERY BACKUP.
10. XP CONDUIT SEAL.

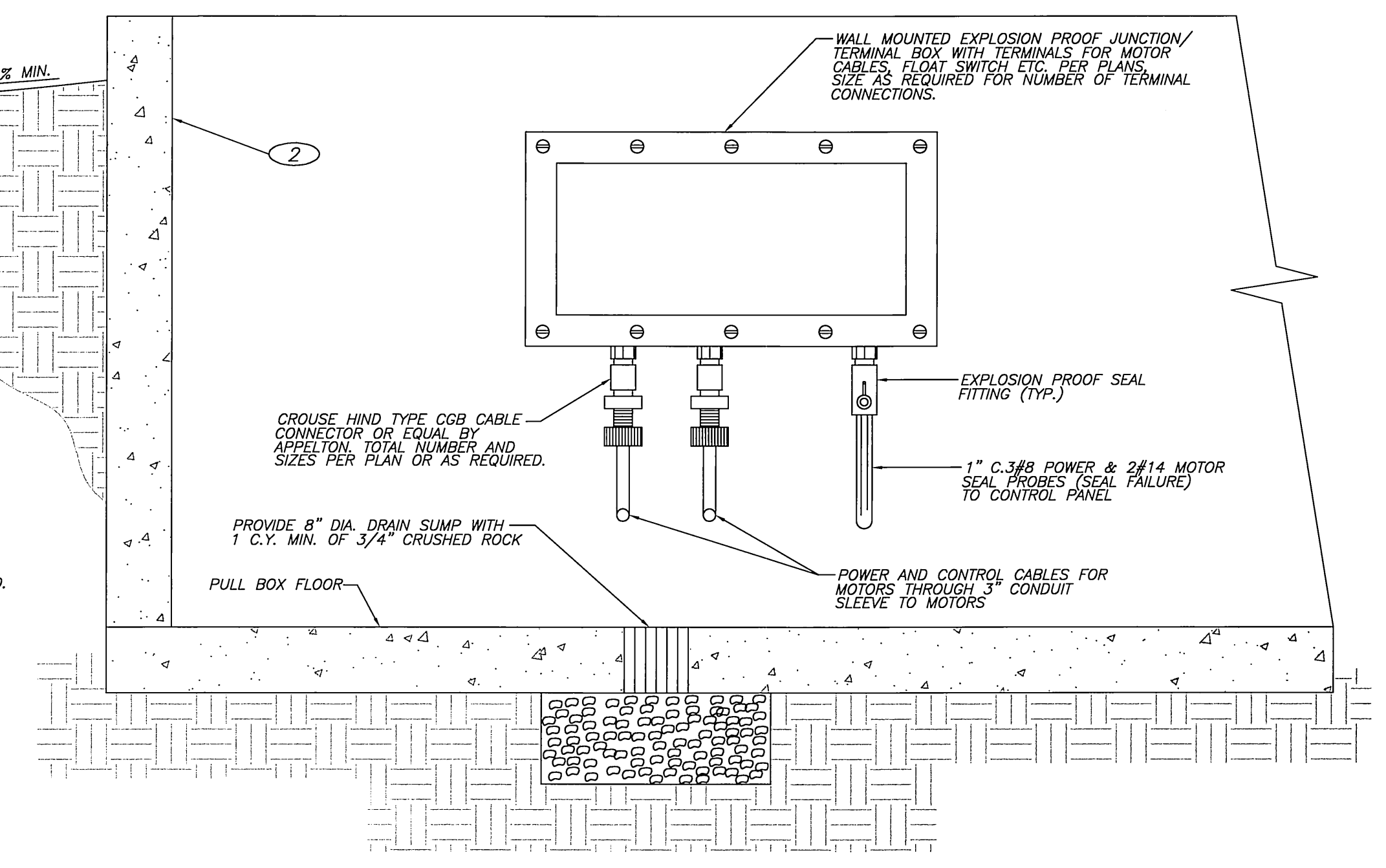


NOTES:
1. ALL BURIED CONDUIT TO BE SCH. 80 PVC

LIFT STATION POWER PLAN



TELEMETRY MAST FOUNDATION DESIGN DETAIL



TYP. EXPLOSION PROOF JUNCTION/ TERMINAL BOX DETAIL
IN UNDERGROUND PULL BOX
N.T.S.



Underground Service Alert
Call: TOLL FREE 1-800-227-2600
TWO WORKING DAYS BEFORE YOU DIG

adkan ENGINEERS
CIVIL ENGINEERING & SURVEYING
6820 AIRPORT DRIVE, RIVERSIDE, CA 92504
TEL: (951) 688-0241 FAX: (951) 688-0599
DATE: 2/14/06
UNDER THE SUPERVISION OF: R.C.E. 53390 6/30/07

CITY OF RIVERSIDE BUSINESS TAX ACCT.#058833 EXP.1/1/07

PLANS PREPARED BY: **adkan ENGINEERS**

BENCHMARK: F7 - K3
CITY OF RIVERSIDE REFERENCE LL47/7.
PK NAIL AND CITY ENGINEER TAG IN THE BASE OF A STREET LIGHT ALONG THE SOUTHERLY CURB OF OVERLOOK PARKWAY 175 FEET EAST OF CHATEAU RIDGE DRIVE. TRANSFER FROM F7-02 BY CITY SURVEY CREW 6/10/2002.
ELEVATION: 1426.960

MARK	REVISIONS	APPR.	DATE

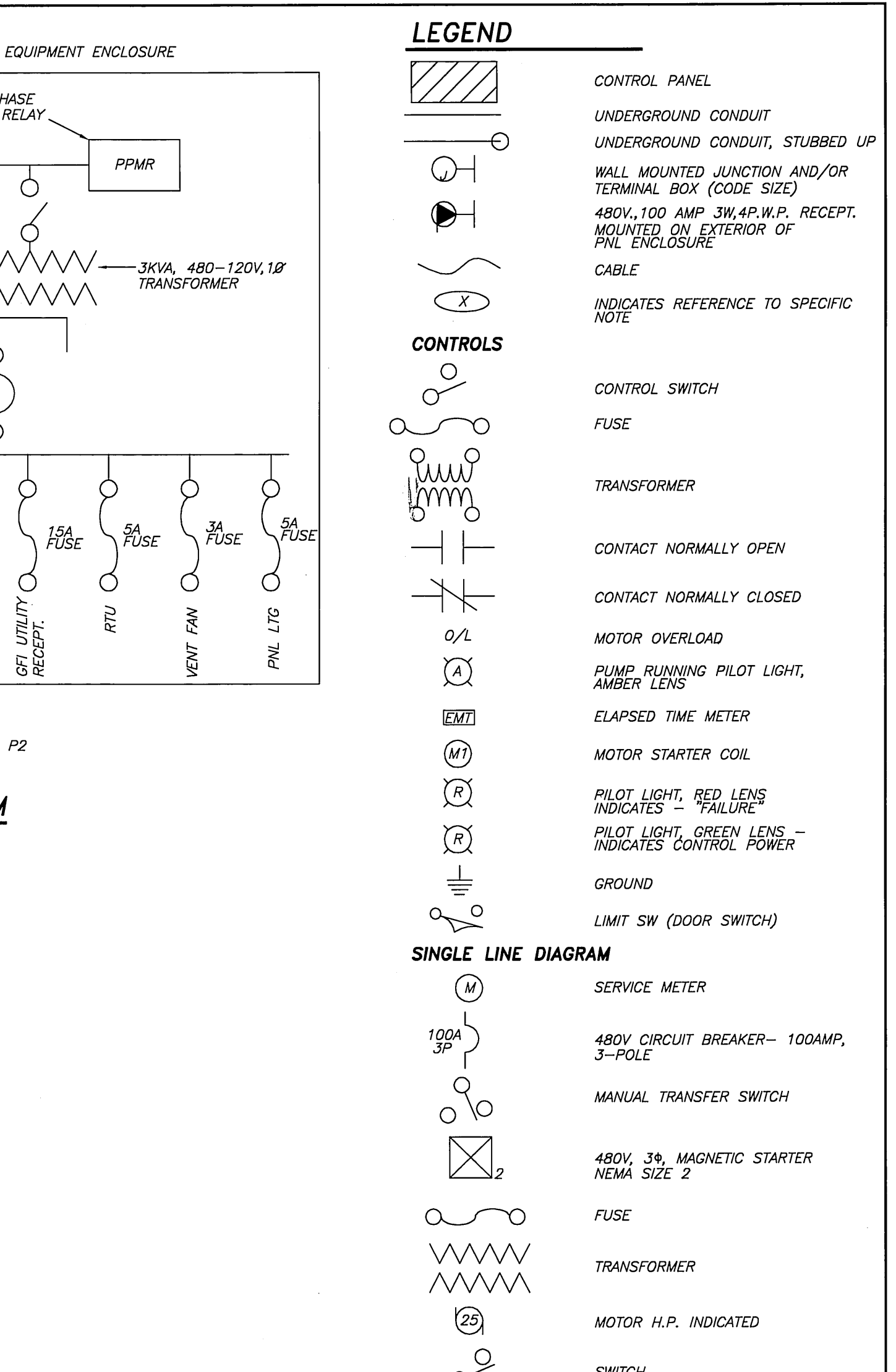
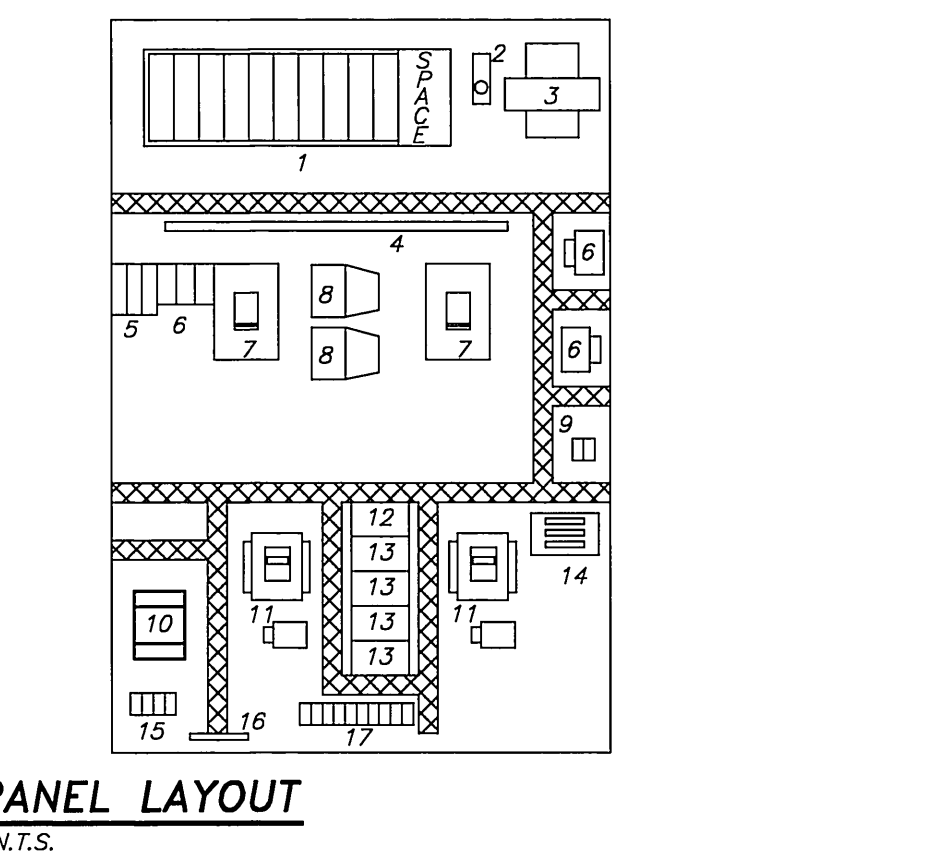
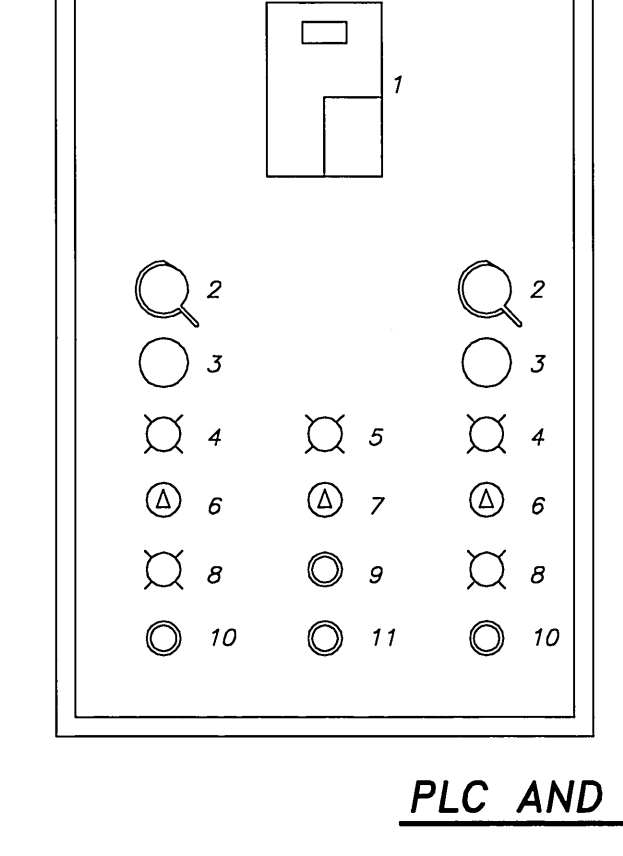
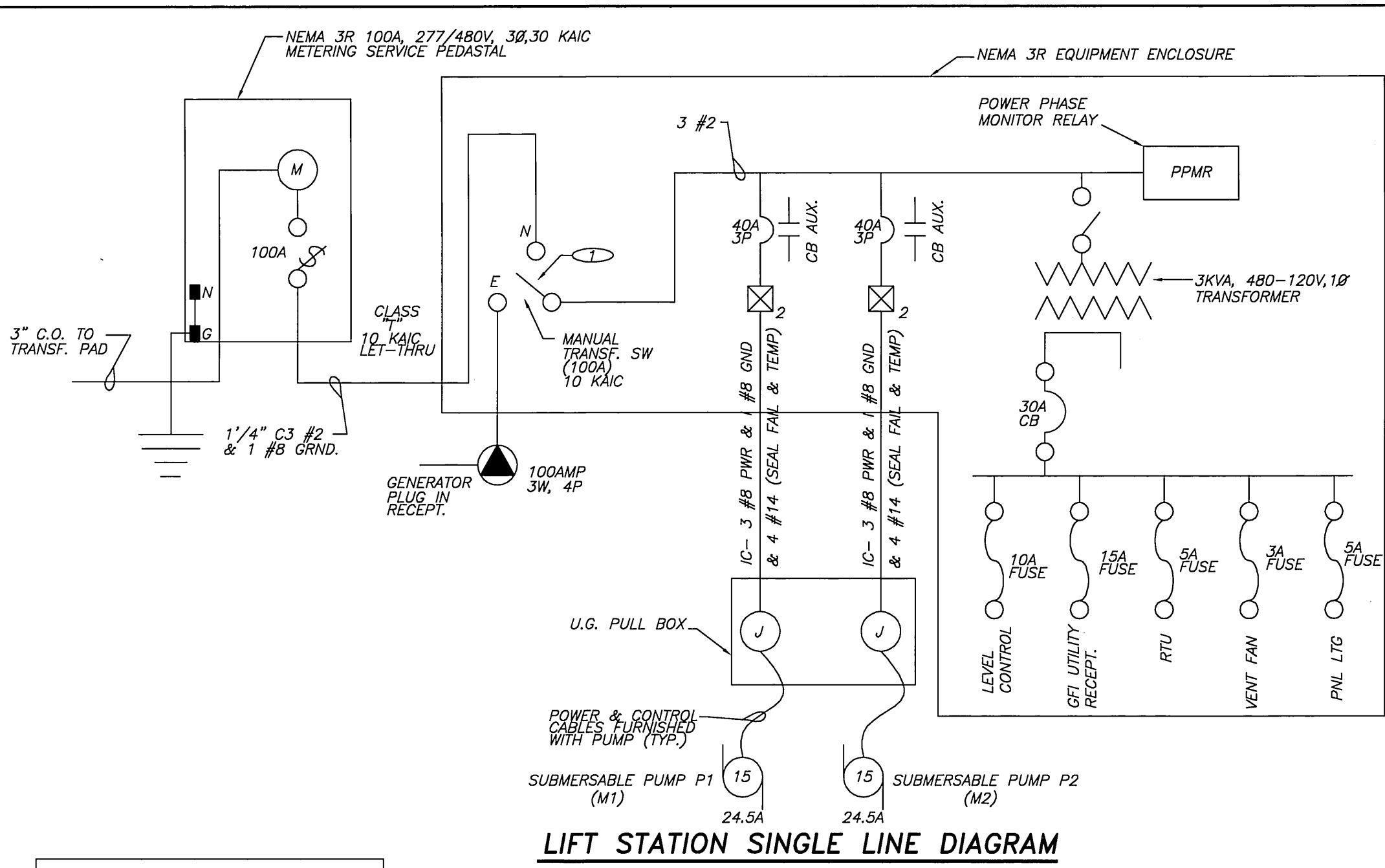
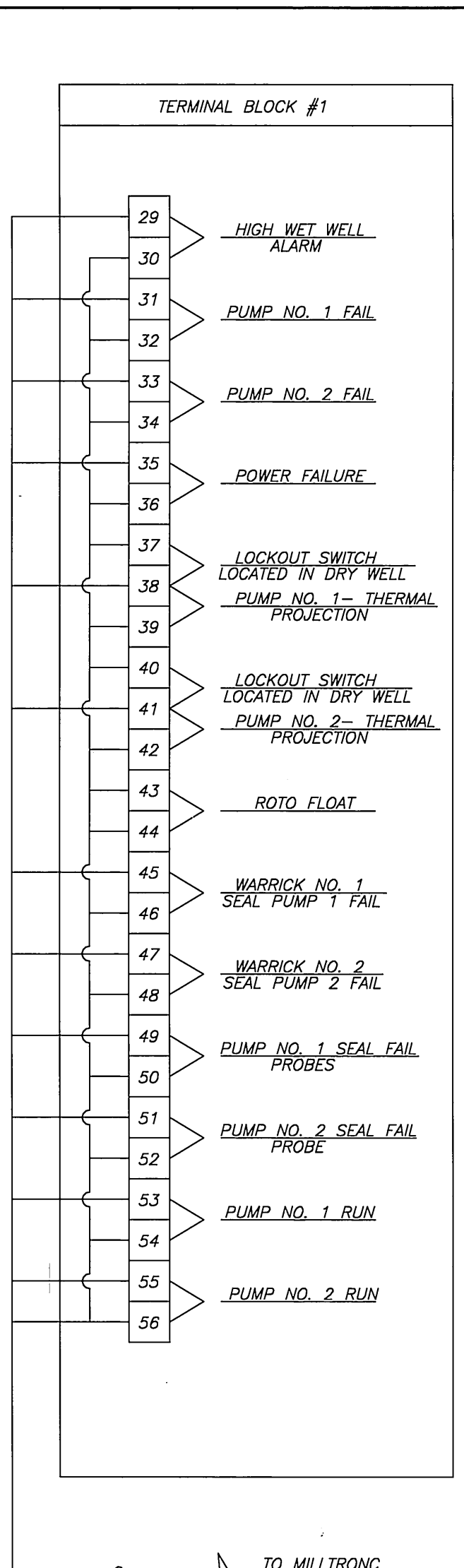
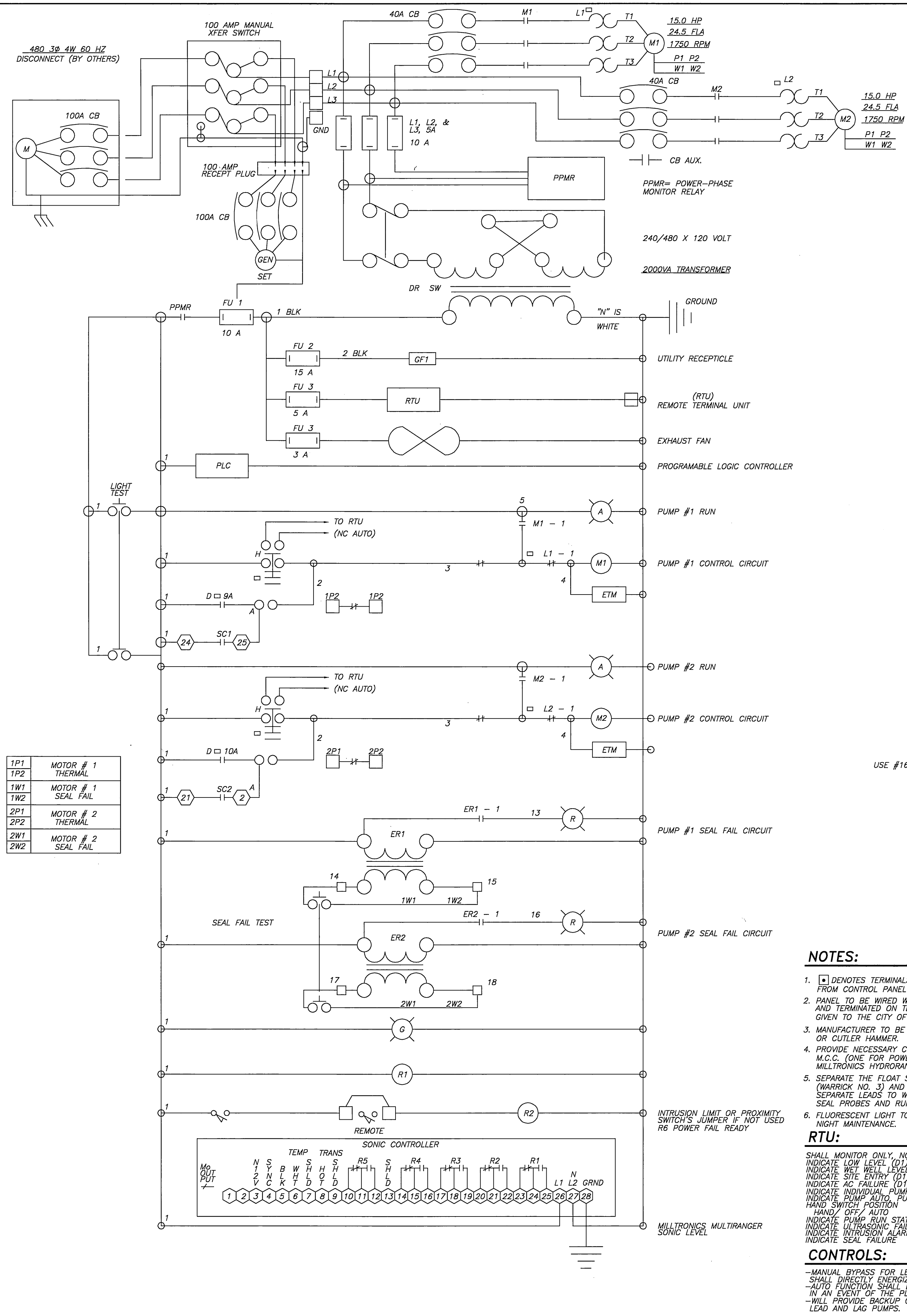
DESIGNED BY: RICK DRAWN BY: BRYAN CHECKED BY: C-

CITY OF RIVERSIDE PUBLIC WORKS DEPARTMENT

APPROVED BY	DATE	BY	APPROVED BY
PRINCIPAL ENGINEER	4/2/06	se	4/2/06
PARK DEPARTMENT			CITY ENGINEER
TRAFFIC DIVISION			
PLANNING DEPARTMENT			
STREET SERVICES			

DATE: 4/2/06

SEWER IMPROVEMENT PLAN	PW04-0923
TRACT 29515	
SEWER PUMP STATION	
DETAILS: A.P.N. 243-200-007, 243-220-001, 011, 015, 017 243-230-001, 002, 021, 022, 024	SHEET 5 OF 6
HORIZ. SCALE:	VERT. SCALE:
	J.N. 6500



1P1	MOTOR # 1 THERMAL
1P2	MOTOR # 1 SEAL FAIL
1W1	MOTOR # 1 THERMAL
1W2	MOTOR # 1 SEAL FAIL
2P1	MOTOR # 2 THERMAL
2P2	MOTOR # 2 SEAL FAIL
2W1	MOTOR # 2 THERMAL
2W2	MOTOR # 2 SEAL FAIL

NOTES:

- DENOTES TERMINALS REQUIRING WIRES TO BE CONNECTED FROM CONTROL PANEL TO REMOTE EQUIPMENT.
- PANEL TO BE WIRED WITH ALL WIRES AND TERMINALS NUMBERED AND TERMINATED ON TERMINAL STRIPS, WIRING DIAGRAM TO BE GIVEN TO THE CITY OF RIVERSIDE.
- MANUFACTURER TO BE ALLEN BRADLEY, FURNAS, TOSHIBA OR CUTLER HAMMER.
- PROVIDE NECESSARY CONDUITS TO PUMP LOCATION FROM M.C.G. (ONE FOR POWER, ONE FOR CONTROL, ONE FOR MILLTRONICS HYDRORANGER).
- SEPARATE THE FLOAT SWITCH WIRES FEEDING INTRINSIC RELAY (WARRICK NO. 3) AND RUN IN SEPARATE 3/4" CONDUIT. SEPARATE LEADS TO WARRICK RELAY NO. 1 & NO. 2 COMING FROM SEAL PROBES AND RUN IN 3/4" CONDUIT.
- FLUORESCENT LIGHT TO BE INSTALLED IN CONTROL PANEL FOR NIGHT MAINTENANCE.

RTU:

- SHALL MONITOR ONLY, NOT CONTROL
- INDICATE LOW LEVEL (D1)
- INDICATE WET WELL LEVEL ANALOG OUTPUT (D)
- INDICATE SITE ENTRY (D1)
- INDICATE AC FAILURE (D1)
- INDICATE INDIVIDUAL PUMP FAILURE (D1)
- INDICATE PUMP AUTO, PUMP NOT AUTO (D1)
- HAND SWITCH POSITION
- INDICATE PUMP RUN STATUS (D)
- INDICATE ULTRASONIC FAILURE (D1)
- INDICATE INTRUSION ALARMS
- INDICATE SEAL FAILURE

CONTROLS:

- MANUAL BYPASS FOR LEVELS, PLC, MILLTRONICS, ETC. AND SHALL DIRECTLY ENERGIZE THE STARTERS.
- AUTO FUNCTION SHALL BE CONTROLLED BY THE PLC OR IN AN EVENT OF THE PLC FAILURE, THE MILLTRONIC
- WILL PROVIDE BACKUP CONTROL START, STOP, AND ALTERNATE LEAD AND LAG PUMPS.

EQUIPMENT

- MODICON QUANTUM PLC
- CIRCUIT BREAKER OPERATORS
- GLASS FUSED TIME METER
- CONTROL POWER TRANSFORMER
- HIGH VOLTAGE BARRIER
- LINE VOLTAGE TERMINAL BLOCK
- CONTROL FUSE
- MOTOR CIRCUIT BREAKER
- SEAL FAIL RELAY
- CONTROL POWER TERMINAL
- INTRINSIC FLTA SW RELAY
- MOTOR STARTERS
- POWER/PHASE MOTOR RELAY
- CONTROL RELAY
- PLC DO ISOLATION TRANSFORMER
- INTRINSIC TERMINAL BLOCK
- GROUND TERMINAL BLOCK
- WIRE WAYS

EQUIPMENT

- SONIC CONTROLLER
- CIRCUIT BREAKER OPERATORS
- GLASS FUSED TIME METER
- MOTOR RUN PILOT LIGHT
- CONTROL POWER PILOT LIGHT
- TURN OFF PUMPS ON SEAL FAILURE AND PROVIDE OUTPUT TO RTU
- LEAD LAG SELECTOR SWITCH
- SEAL FAIL LIGHT
- LIGHT TEST PUSH BUTTON
- OVERLOAD RESET PUSH BUTTON
- SEAL FAIL TEST PUSH BUTTON

CONTROL LOGIC NOTES:

- THE PLC WILL PERFORM THE FOLLOWING CONTROL FUNCTIONS:
- CYCLE PUMPS ON AND OFF ACCORDING TO WET WELL LEVELS.
 - ALTERNATE LEAD AND LAG PUMPS AFTER EACH CYCLE.
 - RECORD PUMP LAPSED TIME RUN HOURS.
 - PROVIDE LOW LEVEL AND HIGH LEVEL OUTPUT TO RTU.
 - TURN OFF PUMPS ON SEAL FAILURE AND PROVIDE OUTPUT TO RTU.
 - CALL LAG PUMP IN EVENT OF LEAD PUMP FAILURE.
 - RECOGNIZE ULTRASONIC LEVEL CONTROL SYSTEMS FAILURE AND PROVIDE INPUT TO RTU.
 - RECOGNIZE PUMP HAND SWITCH POSITION AND ADJUST CONTROL LOGIC.
 - RECOGNIZE ANY FAILURE CONDITION AND PROVIDE OUTPUT TO RTU.
 - RECOGNIZE POWER FAILURE AND CLOSE ALARM CONTACT.
 - RECOGNIZE SITE INTRUSIONS AND CLOSE ALARM CONTACT.
 - MILLTRONICS LEVEL CONTROLLERS SHALL PROVIDE BACKUP PUMP CONTROL IN EVENT OF PLC FAILURE. ALL ALARM CONTACTS AND SIGNALS TO THE RTU WILL BE CONTROLLED BY THE PLC.

INSTRUMENTATION & CONTROL NOTES:

- CONTROL PANEL MUST BE CUSTOM BUILT TO THE CITY REQUIREMENTS.
- CONTRACTOR MUST SUBMIT ALL WIRING DIAGRAMS FOR REVIEW BY THE CITY PRIOR TO ASSEMBLY.
- CONTRACTOR MUST PROVIDE THE CITY THE OPPORTUNITY TO INSPECT PANEL DURING ASSEMBLY.
- THE PANEL SHALL BE NEMA 4X.
- PUMPS SHALL BE CONTROLLED USING A MODICON QUANTUM PLC. NO SUBSTITUTIONS. THIS IS REQUIRED FOR STANDARDIZATION.
- CONTRACTOR MUST SUBMIT A COPY OF THE PLC PROGRAM FOR REVIEW AND APPROVAL. A FINAL FULLY ANNOTATED PROGRAM MUST BE PROVIDED WITH THE AS-BUILT DRAWINGS.
- WET WELL LEVEL WILL BE MONITORED USING A MILLTRONICS MULTIRANGER ULTRASONIC LEVEL METER. NO SUBSTITUTIONS. THIS IS REQUIRED FOR STANDARDIZATION.
- THE LIFT STATION SHALL BE EQUIPPED WITH A MILLTRONICS MULTIRANGER ULTRASONIC LEVEL INDICATOR.
- THE CONTROL PANEL SHALL BE EQUIPPED WITH ACROSS THE LINE STARTING SO THE PUMPS CAN BE OPERATED MANUALLY IN THE EVENT OF PLC OR OTHER EQUIPMENT FAILURE.
- PROVIDE MOSCAD RTU (RADIO TRANSCIVER UNIT) CONTROL EQUIPMENT, RADIO, AND SCADA TY-900 YAGI ANTENNA TO BE PER CITY'S STANDARD. RADIO ANTENNA TO BE MOUNTED ON TOP OF ANTENNA MAST. LOCAL AND CENTRAL STATION SCADA PROGRAMMING SHALL BE PROVIDED BY THE CONTRACTOR. CONTRACTOR SHALL COORDINATE WITH CITY ENGINEER TO ESTABLISH REMOTE SCADA MONITORING AND CONTROL OF THIS FACILITY FROM THE CITY'S CENTRAL STATION COMPUTER MONITORING SYSTEM. NO EXCEPTIONS WITH STARTUP INTO CITY'S SYSTEM.
- CONTRACTOR MUST CONNECT AND TEST THE RTU TO ESTABLISH COMMUNICATION WITH THE WASTEWATER TREATMENT PLANT BASE. THE CITY APPROVED CONTRACTOR WILL INTEGRATE THE RTU INTO THE PLANT SCADA CONTROL SYSTEM. CONTRACTOR TO PAY ALL CITY FEES REQUIRED TO IMPLEMENT SCADA CONTROL SYSTEM PROGRAMMING AND REGISTRATION AT CITY'S BASE STATION.

Underground Service Alert
 Call: TOLL FREE
1-800-227-2600
 TWO WORKING DAYS BEFORE YOU DIG

adkan ENGINEERS
 CIVIL ENGINEERING-SURVEYING-PLANNING
 6820 AIRPORT DRIVE, RIVERSIDE, CA 92504
 TEL: (951) 898-0241 FAX: (951) 568-0589
 DATE: 2/14/06 UNDER THE SUPERVISION OF: R.C.E. 56890 6/30/07

CITY OF RIVERSIDE BUSINESS TAX ACCT.#058833 EXP:1/1/07

PLANS PREPARED BY: **adkan ENGINEERS**

BENCHMARK: F7-K3
 CITY OF RIVERSIDE REFERENCE LL47/7.
 PK NAIL AND CITY ENGINEER TAG IN THE BASE OF A STREET LIGHT ALONG THE SOUTHERLY CURB OF OVERLOOK PARKWAY 175 FEET EAST OF CHATEAU RIDGE DRIVE, TRANSFER FROM F7-C2 BY CITY SURVEY CREW 6/10/2002.
 ELEVATION: 1426.960

CITY OF RIVERSIDE PUBLIC WORKS DEPARTMENT

APPROVED BY: *[Signature]* DATE: *[Date]*
 PRINCIPAL ENGINEER
 PARK DEPARTMENT
 TRAFFIC DIVISION
 PLANNING DEPARTMENT
 STREET SERVICES

DESIGNED BY: RICK DRAWN BY: BRYAN CHECKED BY: C-
 DATE: *[Date]*

SEWER IMPROVEMENT PLAN
TRACT 2915
SEWER PUMP STATION
 DETAILS
 A.P.N. 243-200-007, 243-220-001, 011, 015, 017
 243-230-001, 002, 021, 022, 024
 HORIZ. SCALE: VERT. SCALE:

PW04-0923
S-1928
 SHEET **6** OF **6**
 J.N. 6500