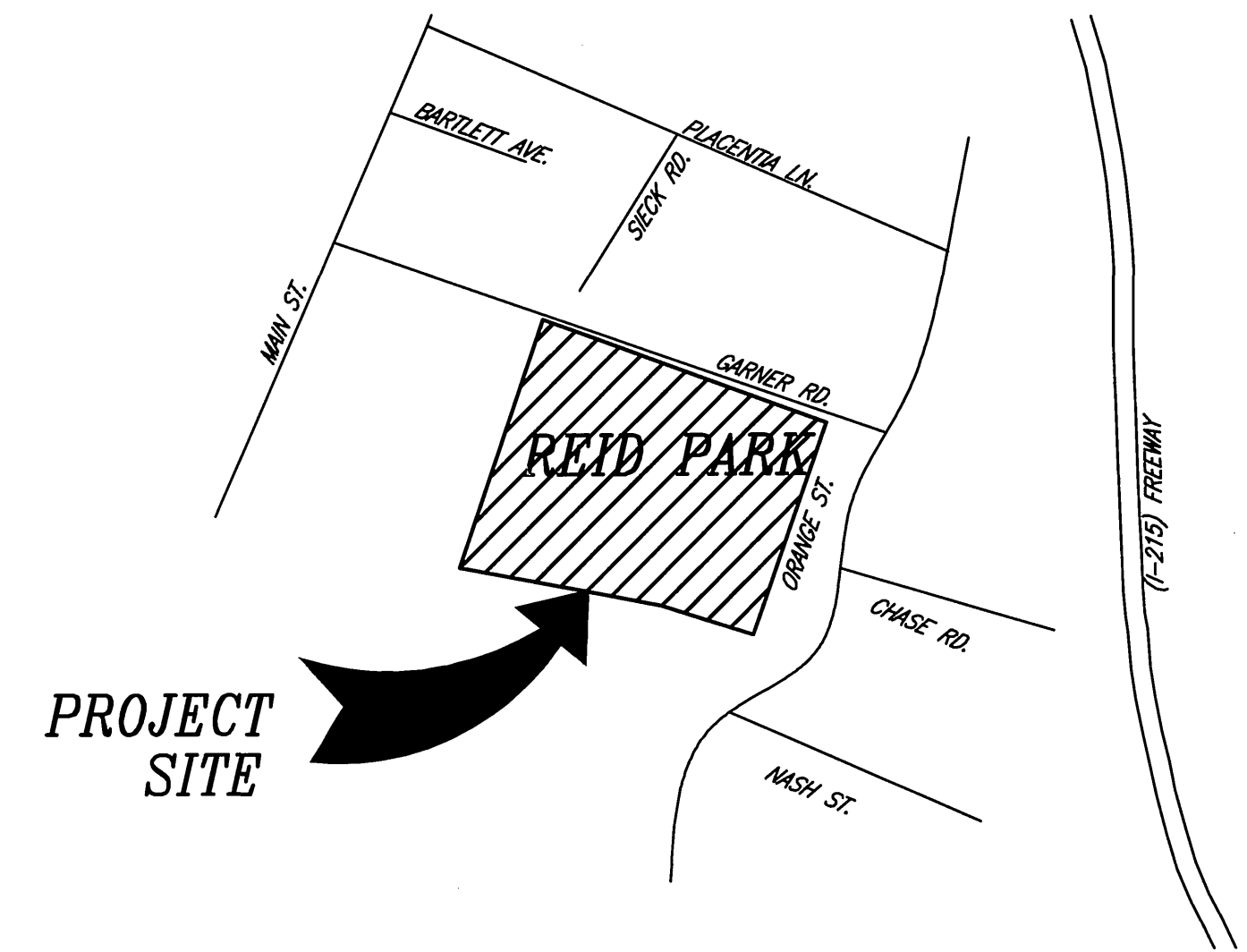
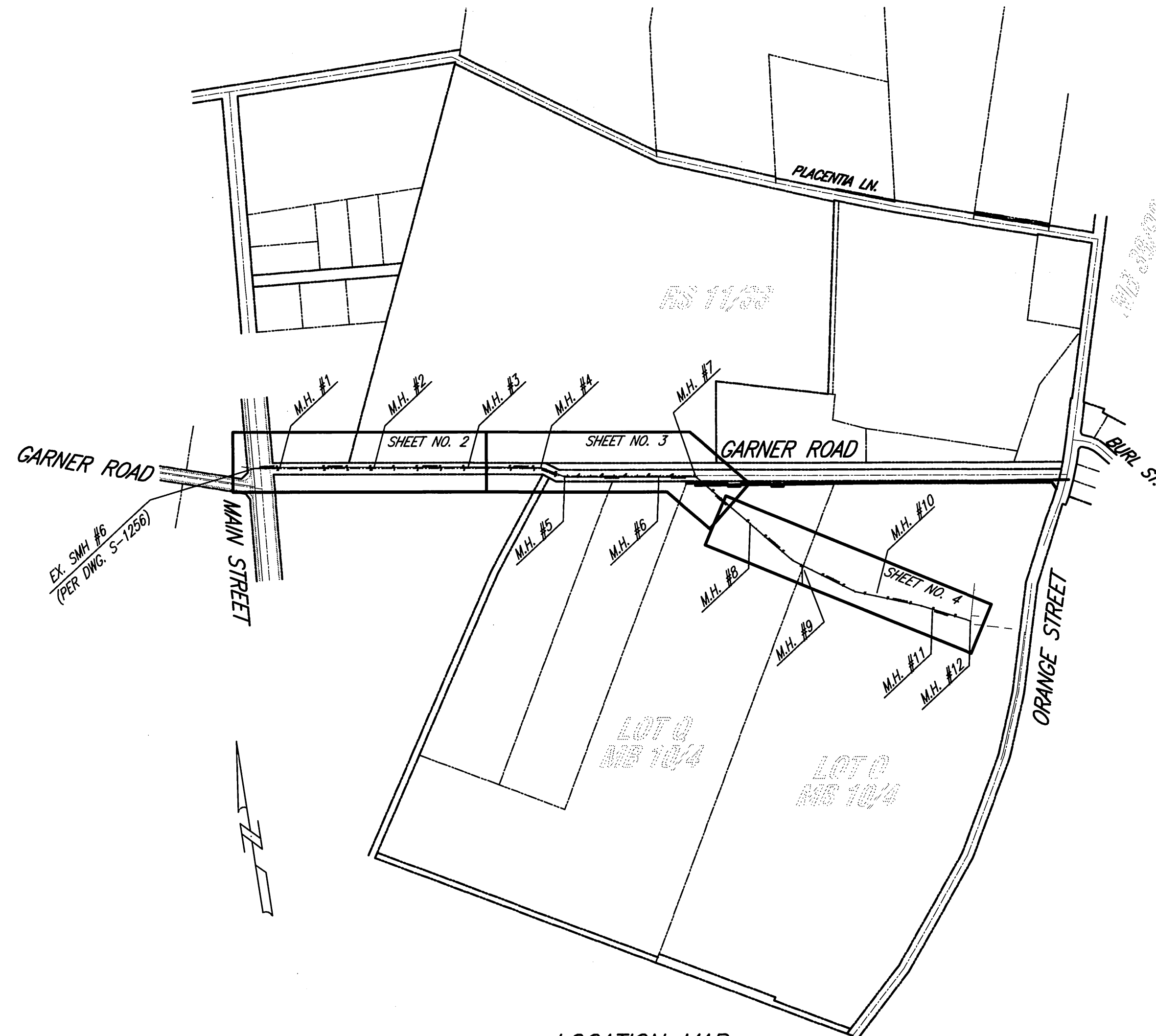


GENERAL NOTES:

1. NO PERSON SHALL PERFORM ANY CONSTRUCTION ACTIVITY OR INSTALL ANY OBJECTS WITHIN THE PUBLIC RIGHTS-OF-WAY OR EASEMENTS OF THE CITY OF RIVERSIDE WITHOUT A VALID CONSTRUCTION PERMIT OR, A STREET OPENING PERMIT OR AN ENCROACHMENT PERMIT ISSUED BY THE CITY'S PUBLIC WORKS DEPARTMENT.
2. IT SHALL BE THE RESPONSIBILITY OF THE CONTRACTOR TO CLEAR THE RIGHT OF WAY IN ACCORDANCE WITH THE PROVISIONS OF LAW AS IT AFFECTS EACH UTILITY INCLUDING IRRIGATION LINES AND APPURTENANCES AND AT NO COST TO THE CITY.
3. CONSTRUCTION SHALL BE IN ACCORDANCE WITH THE CITY OF RIVERSIDE DEPARTMENT OF PUBLIC WORKS, STANDARD DRAWINGS, ITS SUPPLEMENTAL NOTES AND THE STANDARD SPECIFICATIONS FOR PUBLIC WORKS CONSTRUCTION, CURRENT EDITION.
4. THE PRIVATE ENGINEER SIGNING THESE PLANS IS RESPONSIBLE FOR ASSURING THE ACCURACY AND ACCEPTABILITY OF THE WORK HEREON. IN THE EVENT OF DISCREPANCIES ARISING DURING CONSTRUCTION, THE PRIVATE ENGINEER SHALL BE RESPONSIBLE FOR DETERMINING AN ACCEPTABLE SOLUTION AND REVISING THE PLANS FOR APPROVAL BY THE CITY.
5. QUANTITIES SHOWN ARE FOR INFORMATION ONLY AND THE CITY OF RIVERSIDE IS NOT RESPONSIBLE FOR THEIR ACCURACY.
6. THE CONTRACTOR SHALL BE RESPONSIBLE FOR PRESERVING OR RE-ESTABLISHING AND REFERENCING SURVEY MONUMENTS DESTROYED, DISTURBED OR BURIED AS A RESULT OF CONSTRUCTION SHOWN HEREON.
7. ALL FLAGGED ELEVATIONS SHALL BE STAKED IN THE FIELD BY THE CONTRACTOR'S SURVEYOR.
8. WHERE NEW PAVEMENT IS TO JOIN THE EXISTING PAVEMENT, THE EDGE OF THE EXISTING PAVEMENT SHALL BE TRIMMED IN A SMOOTH AND STRAIGHT LINE. CONSTRUCT MATCH-UP PAVING AS SHOWN ON THE PLANS AND OVERLAY PAVING AS DIRECTED IN THE FIELD TO PRODUCE A SMOOTH SECTION.
9. STREET IMPROVEMENT WORK THAT WILL CAUSE DAMAGE TO THE DETECTOR LOOP(S) SHALL NOT BE PERFORMED UNTIL TRAFFIC SIGNAL MAINTENANCE PERSONNEL HAVE BEEN NOTIFIED AND THE NECESSARY TUNING ADJUSTMENTS ARE MADE TO MAINTAIN SIGNAL OPERATION.
10. FINAL STRIPING FOR TRAFFIC CONTROL AND/OR PAVEMENT MARKING REPLACEMENT TO BE THE RESPONSIBILITY OF THE CONTRACTOR.
11. THE CONTRACTOR SHALL CALL IN A LOCATION REQUEST TO UNDERGROUND SERVICE ALERT (USA), PHONE #1-800-227-2600, TWO WORKING DAYS BEFORE DIGGING. NO CONSTRUCTION PERMIT WILL BE ISSUED BY THE PUBLIC WORKS DEPARTMENT INVOLVING EXCAVATION FOR UNDERGROUND FACILITIES UNLESS THE APPLICANT HAS BEEN PROVIDED AN INQUIRY IDENTIFICATION NUMBER BY U.S.A.
12. IN PAVEMENT OVERLAY AREAS, ANY DISTRESSED EXISTING PAVEMENT SHALL BE REMOVED AND REPLACED AS DIRECTED BY THE INSPECTOR PRIOR TO OVERLAYING WITH A.C. PAVING.
13. THE CONTRACTOR IS TO VERIFY EXISTING SEWER LOCATION AND ELEVATION PRIOR TO START OF CONSTRUCTION. POTHOLE EXISTING FACILITIES PRIOR TO TRENCH EXCAVATION AND NOTIFY THE ENGINEER IMMEDIATELY IN THE EVENT OF A CONSTRUCTION CONFLICT OR UNDISCLOSED UTILITY.
14. LOCATION OF LATERALS TO BE DETERMINED IN THE FIELD AT THE DIRECTION OF THE OWNER. AVOID CONFLICT WITH PROPOSED AND/OR EXISTING FACILITIES.
15. A PLUG SHALL BE INSTALLED AND WILL REMAIN IN PLACE WHERE THE NEW SEWER CONNECTS WITH THE EXISTING SEWER UNTIL THE NEW SEWER IS ACCEPTED BY THE CITY.
16. THE SEWER CONTRACTOR SHALL ADJUST MANHOLES TO FINAL GRADE AFTER PAVING IS COMPLETED.
17. MANHOLES IN OPEN FIELDS SHALL BE SET TWO (2) FEET ABOVE GRADE UNLESS NOTED OTHERWISE.
18. ALL MANHOLES DEEPER THAN 12' TO THE SHELF SHALL BE EQUIPPED WITH A "SAFE-T CLIMB" AS MFG. BY NORTH CONSUMER SAFETY PRODUCT, OR APPROVED EQUAL.
19. ALL PIPE BEDDING WILL BE PER CITY OF RIVERSIDE STANDARD NO. 452, CASE PER PLAN.
20. ALL SANITARY SEWER PIPELINE TESTING SHALL BE PER THE "GREENBOOK" - SSPWC SECTION 306-1.4.4 "AIR PRESSURE TEST".

SEWER IMPROVEMENT PLAN
REID PARK



VICINITY MAP
MIS
THOMAS GUIDE MAP
RIVERSIDE COUNTY V. 2004
PG. 716, GRID H-4

LEGEND

(590.0)	EXISTING ELEVATION
590.0	PROPOSED FINISH SURFACE ELEVATION
PAD=590.0	PROPOSED PAD ELEVATION
F.F.=590.00	PROPOSED FINISH FLOOR ELEVATION
====(SD)====	EXISTING STORM DRAIN
---(S)---	EXISTING SEWER
---(W)---	EXISTING WATER
---(G)---	EXISTING GAS
S	PROPOSED SEWER
TC	TOP OF CURB
FL	FLOW LINE
FG	FINISH GRADE
EP	EDGE OF PAVEMENT
R/W	RIGHT-OF-WAY
P/L	PROPERTY LINE
G&O	GRIND AND OVERLAY
CML&C	CEMENT MORTAR LINED & COATED
WMWD	WESTERN MUNICIPAL WATER DISTRICT
P.I.P.	PROTECT IN PLACE
○	PROPOSED ST. LT.
○	EXISTING ST. LT.
■	PROPOSED SIGN
■	EXISTING SIGN

NOTICE TO CONTRACTORS:

THE EXISTENCE AND LOCATION OF ANY UNDERGROUND UTILITY PIPES, CONDUITS, OR STRUCTURES SHOWN ON THESE PLANS WERE OBTAINED BY A SEARCH OF AVAILABLE RECORDS. TO THE BEST OF OUR KNOWLEDGE, THERE ARE NO EXISTING UTILITIES EXCEPT THOSE SHOWN ON THESE PLANS. THE CONTRACTOR IS REQUIRED TO TAKE PRECAUTIONARY MEASURES TO PROTECT THE UTILITY LINES SHOWN ON THESE DRAWINGS. THE CONTRACTOR FURTHER ASSUMES ALL LIABILITY AND RESPONSIBILITY FOR THE UTILITY PIPES, CONDUITS OR STRUCTURES, SHOWN OR NOT SHOWN ON THESE PLANS.

CONTRACTOR AGREES THAT HE SHALL ASSUME SOLE AND COMPLETE RESPONSIBILITY FOR JOBSITE CONDUITS DURING THE COURSE OF CONSTRUCTION ON THIS PROJECT, INCLUDING SAFETY OF ALL PERSONS OR PROPERTY; THAT THIS REQUIREMENT SHALL APPLY CONTINUOUSLY AND NOT BE LIMITED TO NORMAL WORKING HOURS; THAT THE CONTRACTOR SHALL DEFEND, INDEMNIFY, AND HOLD THE CITY, THE OWNER, AND THE ENGINEER HARMLESS FROM ANY AND ALL LIABILITY, REAL OR ALLEGED, IN CONNECTION WITH THE PERFORMANCE OF WORK ON THIS PROJECT.

THE CONTRACTOR SHALL CALL IN A LOCATION REQUEST TO UNDERGROUND SERVICE ALERT (USA) PH. 1-800-227-2600, TWO (2) WORKING DAYS PRIOR TO DIGGING. NO CONSTRUCTION PERMIT ISSUED BY THE PUBLIC WORKS DEPARTMENT SHALL BE VALID INVOLVING UNDERGROUND FACILITIES UNLESS THE APPLICANT HAS AN INQUIRY IDENTIFICATION NUMBER ISSUED BY U.S.A.

CARE SHOULD BE TAKEN TO PREVENT GRADED DITCHES AND SWALES FROM UNDERMINING STREET IMPROVEMENTS. UPON INSPECTION OF THE SITES, THE CITY ENGINEER MAY REQUIRE TEMPORARY GUMITE SWALES, ENTERING OR LEAVING IMPROVEMENTS.

ENGINEER

ARMSTRONG & BROOKS CONSULTING ENGINEERS
1530 CONSUMER CIRCLE UNIT B
CORONA, CA 92880
PH. (951) 372-8400 FAX (951) 372-8430
CITY OF RIVERSIDE BUS. TAX # 105482 EXPIRES
9/28/2006

OWNER

CITY OF RIVERSIDE PARKS & RECREATION DEPARTMENT
3900 MAIN STREET
RIVERSIDE, CA 92522
ATTN: ANDY EMERY
PH. (951) 826-2021

WDID NO.

#83333M000135

SITE ADDRESS

701 ORANGE STREET

SOILS ENGINEER

CONVERSE CONSULTANTS
10391 CORPORATE DRIVE
REDLANDS, CA 92374
PH. (909) 796-0544 FAX (909) 796-7675

LOCATION MAP

Scale 1" = 400'

SHEET INDEX

- 1 TITLE SHEET, GENERAL NOTES & ABBREVIATIONS
- 2 GARNER ROAD SEWER PLAN AND PROFILE STA. 20+00 TO 31+00
- 3 GARNER ROAD SEWER PLAN AND PROFILE STA. 31+00 TO 41+00
- 4 REID PARK ON-SITE SEWER PLAN AND PROFILE STA. 41+00 TO 52+70.68

CONSTRUCTION NOTES	QTY	UNIT
30 REMOVE EXISTING 18" VCP STUB-OUT	8	LF
31 CONSTRUCT 12" VCP SEWER IN BEDDING PER C.O.R. STD. DWG. NO. 452 IN CASE 1 BEDDING	1,870	LF
32 CONSTRUCT 8" SDR 35 PVC SEWER IN BEDDING PER C.O.R. STD. DWG. NO. 452 IN CASE 1 BEDDING	1,349	LF
33 CONSTRUCT 5" DIAMETER MANHOLE PER C.O.R. STD. DWG. NO. 500	9	EA
34 CONSTRUCT 4" DIAMETER MANHOLE PER C.O.R. STD. DWG. NO. 500	3	EA
35 REPAIR TRENCH PER C.O.R. STD. DWG. NO. 453	550	SF
36 JOIN EXISTING SEWER MANHOLE PER DETAIL ON SHEET NO. 2	1	EA
37 JOIN EXISTING 4" SEWER	1	EA
38 CONSTRUCT 4" PVC SDR 35 SEWER LATERAL PER C.O.R. STD. DWG. NO. 582 IN CASE 1 BEDDING	73	LF
39 CONSTRUCT SEWER CLEANOUT PER C.O.R. STD. DWG. NO. 580	1	EA
38A PROVIDE 4" STUB AND PLUG	1	EA



PUBLIC UTILITIES-ELECTRIC DIVISION	PUBLIC UTILITIES-WATER DIVISION
APPROVED BY: <i>MW M...d</i>	APPROVED BY: <i>5/22/06</i>
DATE	DATE

Underground Service Alert
CALL BEFORE YOU DIG
Call: TOLL FREE
1-800
227-2600
TWO WORKING DAYS BEFORE YOU DIG

PRIVATE ENGINEERING NOTE
CONSTRUCTION CONTRACTOR AGREES THAT IN ACCORDANCE WITH GENERALLY ACCEPTED CONSTRUCTION PRACTICES, CONSTRUCTION CONTRACTOR WILL BE REQUIRED TO ASSUME SOLE AND COMPLETE RESPONSIBILITY FOR JOB SITE CONDITIONS DURING THE COURSE OF CONSTRUCTION OF THE PROJECTS, INCLUDING THE SAFETY OF ALL PERSONS AND PROPERTY THAT THIS REQUIREMENT SHALL BE MADE TO APPLY CONTINUOUSLY AND NOT BE LIMITED TO NORMAL WORKING HOURS AND CONSTRUCTION CONTRACTOR FURTHER AGREES TO DEFEND, INDEMNIFY AND HOLD DESIGN PROFESSIONAL HARMLESS FROM ANY AND ALL LIABILITY, REAL OR ALLEGED, IN CONNECTION WITH THE PERFORMANCE OF WORK ON THIS PROJECT, EXCEPTING LIABILITY ARISING FROM THE SOLE NEGLIGENCE OF DESIGN PROFESSIONAL.

Plans Prepared Under Supervision Of
ARMSTRONG & BROOKS CONSULTING ENGINEERS
1630 CONSUMER CIRCLE, UNIT "B"
CORONA, CALIFORNIA 92880
VOICE: (951) 372-8400; FAX: (951) 372-8430

William D. Brooks
WILLIAM D. BROOKS
R.C.E. No. C53114
Date 5.16.06
Expires 6/30/07

BENCHMARK: K7-B2
COUNTY SURVEYOR'S BRASS
MONUMENT WELL AT THE
CENTERLINE INTERSECTION
OF NORTH MAIN STREET AND
PLACENTIA LANE,
ADJUSTED 1971,
ELEV. 833.594

MARK	REVISIONS	APPR	DATE
DESIGNED BY: <i>CRV</i>	DRAWN BY: <i>CRV</i>	CHECKED BY: <i>WDB</i>	

CITY OF RIVERSIDE, CALIFORNIA
PUBLIC WORKS DEPARTMENT

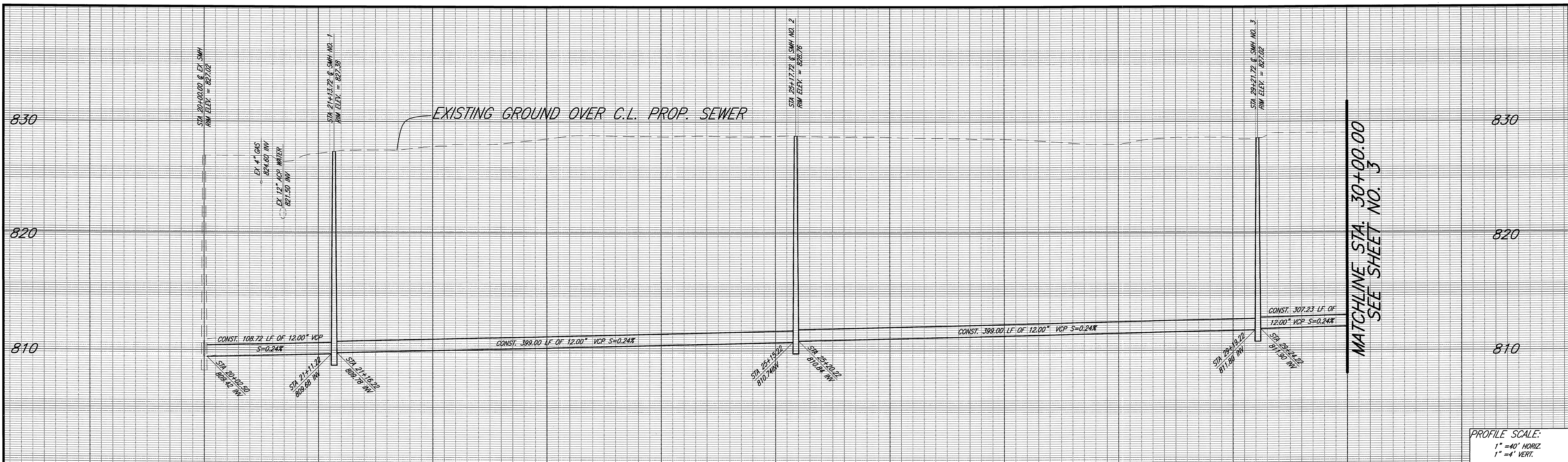
APPROVED BY:	BY:	DATE:	APPROVED BY:
PRINCIPAL ENGINEER	<i>W.D. Brooks</i>	<i>5/16/06</i>	<i>Andrew Newbold</i>
PARK DEPARTMENT			CITY ENGINEER
TRAFFIC DIVISION			
STREET-SERVICES			

DATE: 5/26/06

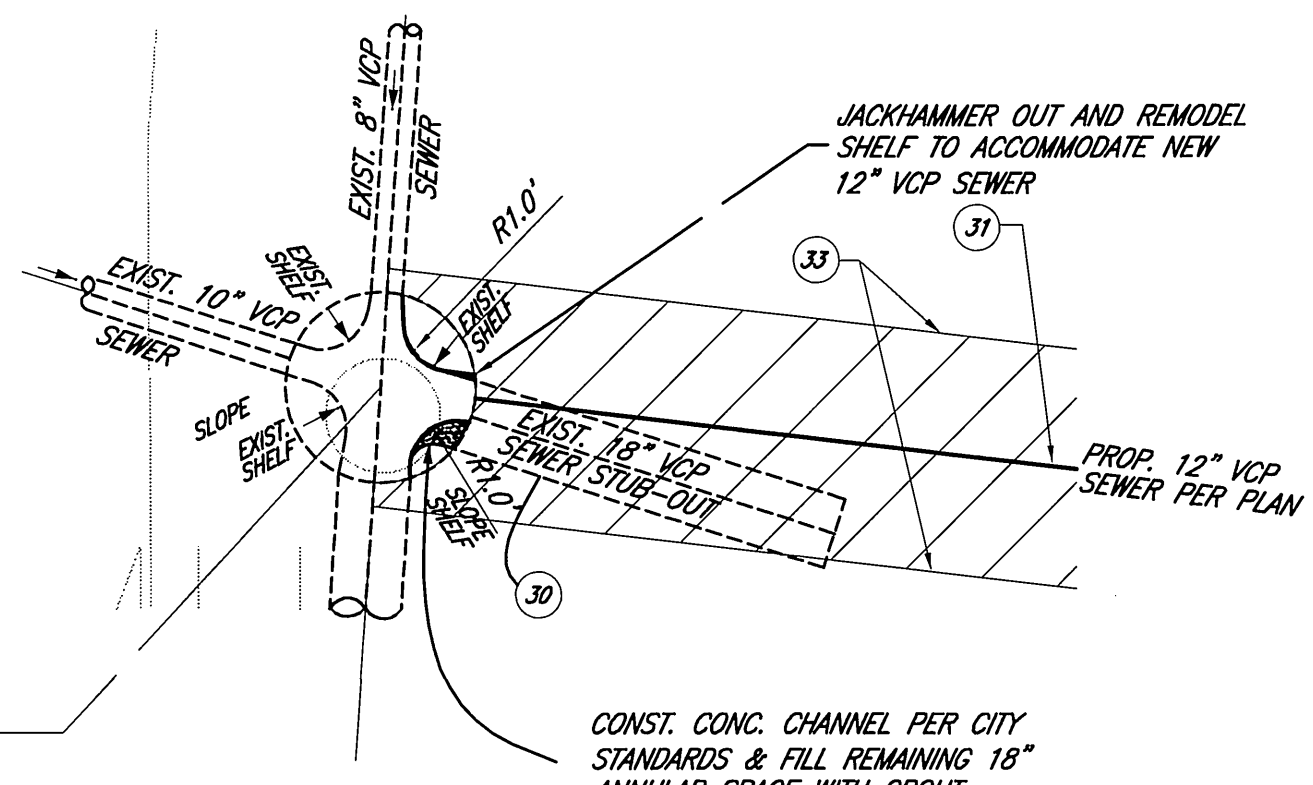
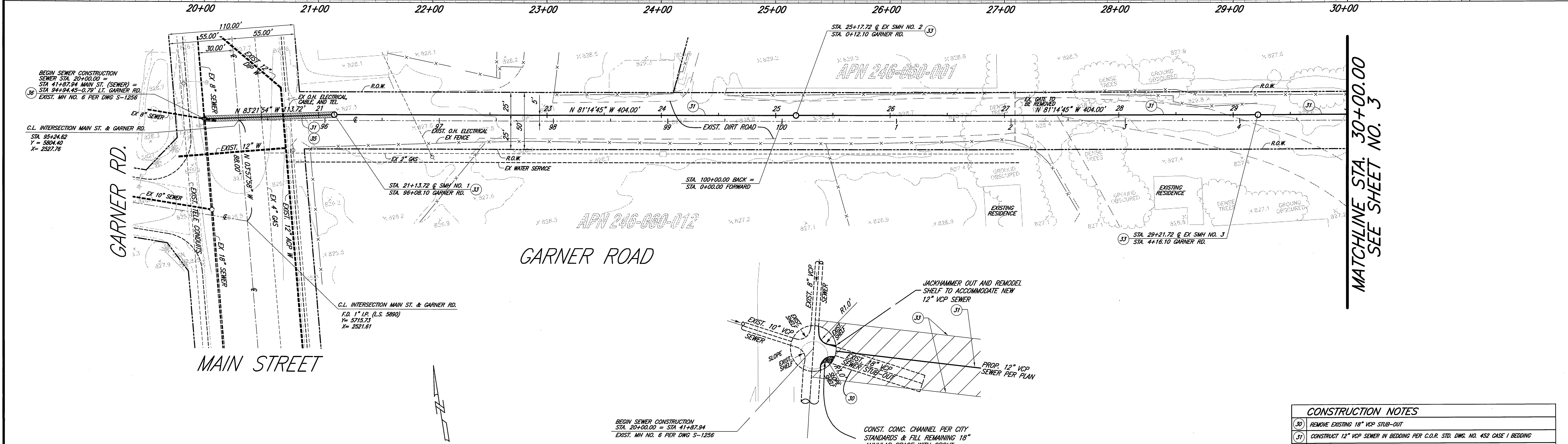
CITY OF RIVERSIDE
REID PARK
SEWER IMPROVEMENT PLANS
TITLE SHEET

ACCOUNT NO. PWS06-0234
S-1967
SHEET 1 OF 4

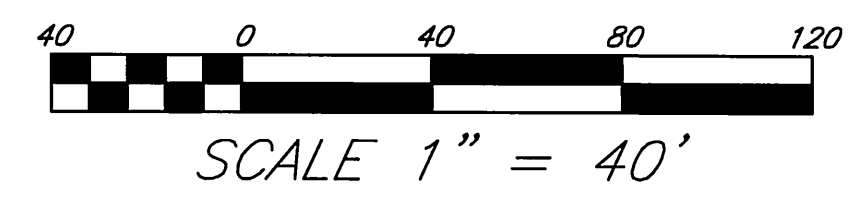
HORIZ. SCALE: AS SHOWN VERT. SCALE: N/A
INDEXED 6/06/06 LHM



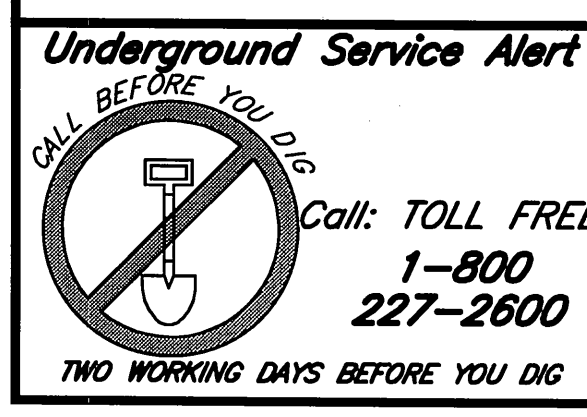
PROFILE SCALE:
 1" = 40' HORIZ.
 1" = 4' VERT.



CONSTRUCTION NOTES	
(30)	REMOVE EXISTING 18" VCP STUB-OUT
(31)	CONSTRUCT 12" VCP SEWER IN BEDDING PER C.O.R. STD. DWG. NO. 452 CASE 1 BEDDING
(32)	CONSTRUCT 5" DIAMETER MANHOLE PER C.O.R. STD. DWG. NO. 500
(35)	REPAIR TRENCH PER C.O.R. STD. DWG. NO. 453
(36)	JOIN EXISTING SEWER MANHOLE PER DETAIL NO. 1 ON SHEET NO. 2



PUBLIC UTILITIES-ELECTRIC DIVISION
 PUBLIC UTILITIES-WATER DIVISION
 APPROVED BY: MW M... DATE: 5/22/06



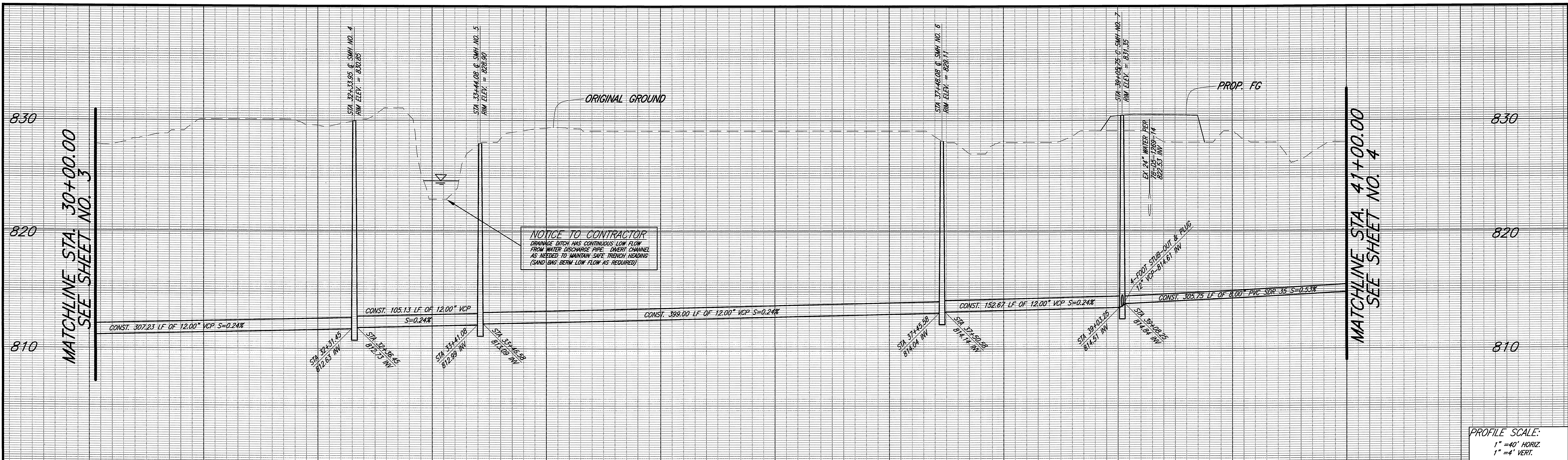
PRIVATE ENGINEERING NOTE
 CONSTRUCTION CONTRACTOR AGREES THAT IN ACCORDANCE WITH GENERALLY ACCEPTED CONSTRUCTION PRACTICES, CONSTRUCTION CONTRACTOR WILL BE REQUIRED TO ASSUME SOLE AND COMPLETE RESPONSIBILITY FOR THE SITE CONDITIONS DURING THE COURSE OF CONSTRUCTION OF THE PROJECT, INCLUDING THE SAFETY OF ALL PERSONS AND PROPERTY THAT THIS REQUIREMENT SHALL BE MADE TO APPLY CONTINUOUSLY AND NOT BE LIMITED TO NORMAL WORKING HOURS AND CONSTRUCTION CONTRACTOR FURTHER AGREES TO DEFEND, INDEMNIFY AND HOLD DESIGN PROFESSIONAL HARMLESS FROM ANY AND ALL LIABILITY, REAL OR ALLEGED, IN CONNECTION WITH THE PERFORMANCE OF WORK ON THIS PROJECT, EXCEPT LIABILITY ARISING FROM THE SOLE NEGLIGENCE OF DESIGN PROFESSIONAL.

Plans Prepared Under Supervision of
ARMSTRONG & BROOKS CONSULTING ENGINEERS
 1650 CONSUMER CIRCLE, UNIT "B"
 CORONA, CALIFORNIA 92880
 VOICE: (951) 372-8400; FAX: (951) 372-8430
 Wm D Brooks
 WILLIAM D. BROOKS
 R.C.E. No. C53114 Date 5.16.06 Expires 6/30/07

BENCHMARK: K7-B2
 COUNTY SURVEYOR'S BRASS MONUMENT WELL AT THE CENTERLINE INTERSECTION OF NORTH MAIN STREET AND PLACENTIA LANE, ADJUSTED 1971,
 ELEV. 833.594

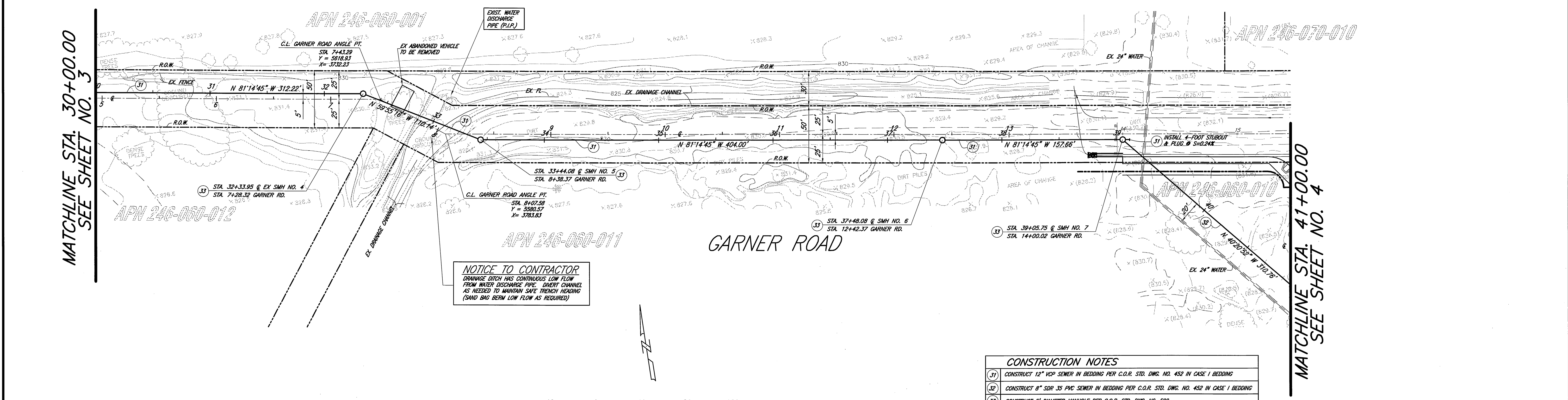
CITY OF RIVERSIDE, CALIFORNIA
 PUBLIC WORKS DEPARTMENT
 APPROVED BY: [Signature] DATE: 5/22/06
 PRINCIPAL ENGINEER
 PARK DEPARTMENT
 TRAFFIC-DIVISION
 STREET-SERVICES
 DATE: 5/22/06
 CITY ENGINEER

CITY OF RIVERSIDE
 REID PARK
 SEWER IMPROVEMENT PLANS
 GARNER ROAD
 STA 20+00 - STA 30+00
 ACCOUNT NO. S-1967
 SHEET 2 OF 4
 HORIZ. SCALE: AS SHOWN VERT. SCALE: AS SHOWN
 INDEXED 6/06/06



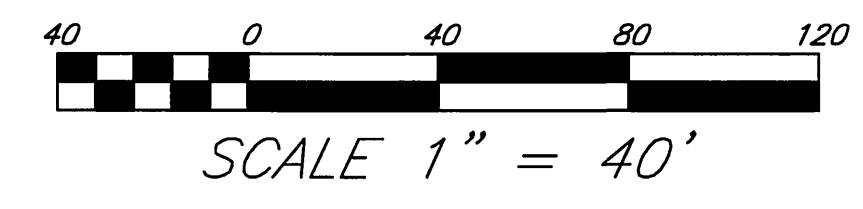
PROFILE SCALE:
 1" = 40' HORIZ.
 1" = 4' VERT.

30+00 31+00 32+00 33+00 34+00 35+00 36+00 37+00 38+00 39+00 40+00 41+00 42+00



NOTICE TO CONTRACTOR
 DRAINAGE DITCH HAS CONTINUOUS LOW FLOW FROM WATER DISCHARGE PIPE. DIVERT CHANNEL AS NEEDED TO MAINTAIN SAFE TRENCH HEADING (SAND BAG BERM LOW FLOW AS REQUIRED)

CONSTRUCTION NOTES	
(31)	CONSTRUCT 12" VCP SEWER IN BEDDING PER C.O.R. STD. DWG. NO. 452 IN CASE 1 BEDDING
(32)	CONSTRUCT 8" SDR 35 PVC SEWER IN BEDDING PER C.O.R. STD. DWG. NO. 452 IN CASE 1 BEDDING
(33)	CONSTRUCT 5' DIAMETER MANHOLE PER C.O.R. STD. DWG. NO. 500
(34)	PROVIDE 4' STUB AND PLUG



PUBLIC UTILITIES—ELECTRIC DIVISION	PUBLIC UTILITIES—WATER DIVISION
APPROVED BY _____ DATE _____	APPROVED BY <i>MW MCL</i> DATE <i>5/22/06</i>

Underground Service Alert
 CALL BEFORE YOU DIG
 Call: TOLL FREE 1-800-227-2600
 TWO WORKING DAYS BEFORE YOU DIG

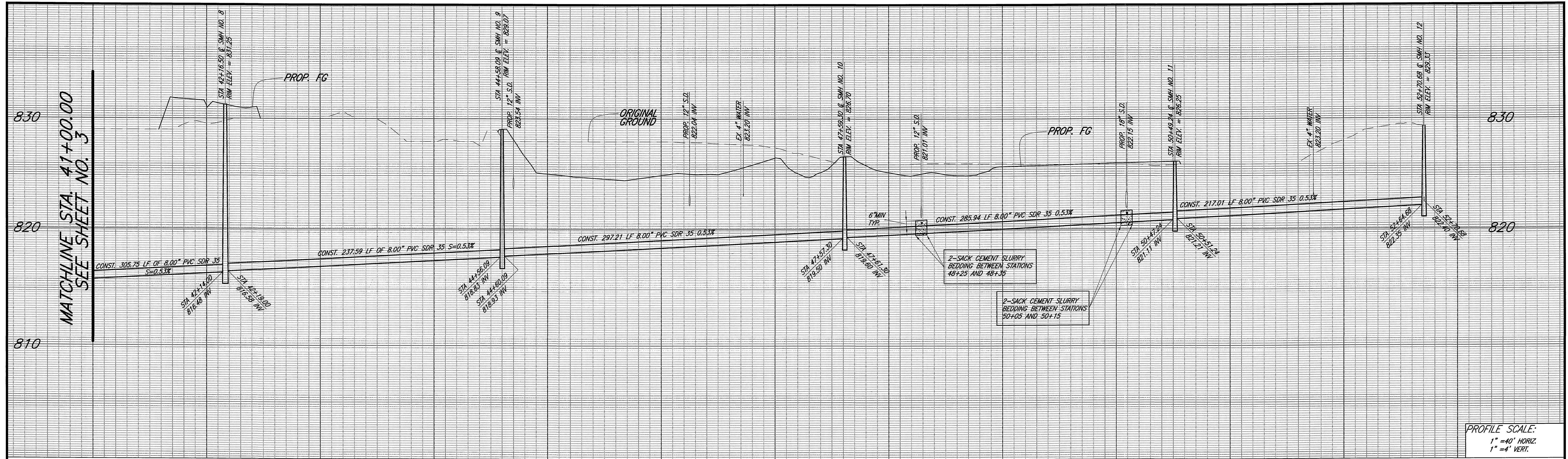
PRIVATE ENGINEERING NOTE
 CONSTRUCTION CONTRACTOR AGREES THAT IN ACCORDANCE WITH GENERALLY ACCEPTED CONSTRUCTION PRACTICES, CONSTRUCTION CONTRACTOR WILL BE REQUIRED TO ASSUME SOLE AND COMPLETE RESPONSIBILITY FOR JOB SITE CONDITIONS DURING THE COURSE OF CONSTRUCTION OF THE PROJECTS INCLUDING THE SAFETY OF ALL PERSONS AND PROPERTY THAT THIS REQUIREMENT SHALL BE MADE TO APPLY CONTINUOUSLY AND NOT BE LIMITED TO NORMAL WORKING HOURS, AND CONSTRUCTION CONTRACTOR FURTHER AGREES TO DEFEND, INDEMNIFY AND HOLD DESIGN PROFESSIONAL HARMLESS FROM ANY AND ALL LIABILITY, REAL OR ALLEGED, IN CONNECTION WITH THE PERFORMANCE OF WORK ON THIS PROJECT, EXCEPTING LIABILITY ARISING FROM THE SOLE NEGLIGENCE OF DESIGN PROFESSIONAL.

Plans Prepared Under Supervision Of
ARMSTRONG & BROOKS CONSULTING ENGINEERS
 1630 CONSUMER CIRCLE, UNIT "B"
 CORONA, CALIFORNIA 92880
 VOICE: (951) 372-8400; FAX: (951) 372-8430
William D. Brooks
 WILLIAM D. BROOKS Date *5-16-06*
 R.C.E. No. *C53114* Expires *6/30/07*

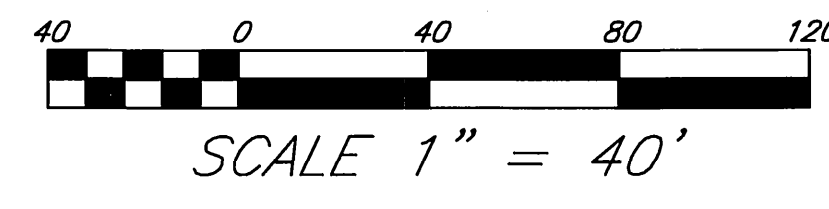
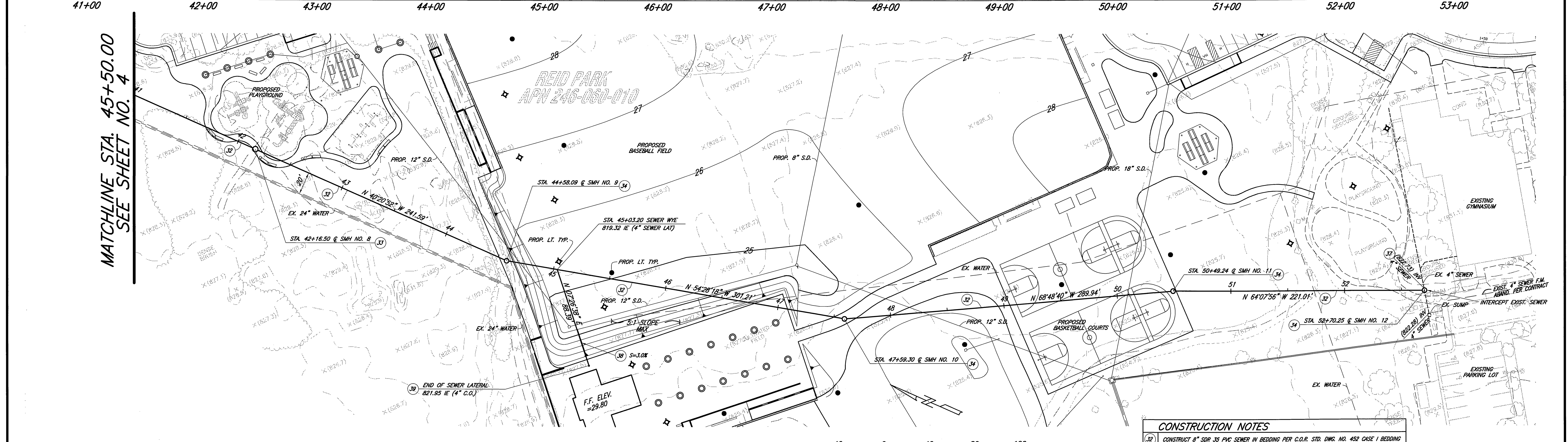
BENCHMARK: K7-B2
 COUNTY SURVEYOR'S BRASS
 MONUMENT WELL AT THE
 CENTERLINE INTERSECTION
 OF NORTH MAIN STREET AND
 PLACENTIA LANE,
 ADJUSTED 1971,
 ELEV. 833.594

CITY OF RIVERSIDE, CALIFORNIA PUBLIC WORKS DEPARTMENT		
APPROVED BY PRINCIPAL ENGINEER <i>Paul Byrd</i>	BY <i>5-22-06</i>	DATE <i>5/22/06</i>
APPROVED BY CITY ENGINEER <i>Paul Byrd</i>		
MARK	REVISIONS	APPR. DATE
DESIGNED BY <i>CRV</i>	DRAWN BY <i>CRV</i>	CHECKED BY <i>MRB</i>

CITY OF RIVERSIDE
 REID PARK
 SEWER IMPROVEMENT PLANS
 GARNER ROAD
 STA 30+00 - STA 41+00
 ACCOUNT NO. *PW06-023A*
S-1967
 SHEET *3* OF *4*
 HORIZ. SCALE: AS SHOWN VERT. SCALE: AS SHOWN
 INDEXED 6/06/06 *GH*



PROFILE SCALE:
1" = 40' HORIZ.
1" = 4' VERT.



CONSTRUCTION NOTES	
(32)	CONSTRUCT 8" SDR 35 PVC SEWER IN BEDDING PER C.O.R. STD. DWG. NO. 452 CASE 1 BEDDING
(34)	CONSTRUCT 4" DIAMETER MANHOLE PER C.O.R. STD. DWG. NO. 500
(37)	JOIN EXISTING 4" SEWER
(38)	CONSTRUCT 4" PVC SDR 35 SEWER LATERAL PER C.O.R. STD. DWG. NO. 562 IN CASE 1 BEDDING
(39)	CONSTRUCT SEWER CLEANOUT PER C.O.R. STD. DWG. NO. 560

PUBLIC UTILITIES—ELECTRIC DIVISION	PUBLIC UTILITIES—WATER DIVISION
APPROVED BY _____ DATE _____	APPROVED BY <u>MW MCL</u> DATE <u>5/20/06</u>

Underground Service Alert
CALL BEFORE YOU DIG
TOLL FREE 1-800-227-2600
TWO WORKING DAYS BEFORE YOU DIG

PRIVATE ENGINEERING NOTE
CONSTRUCTION CONTRACTOR AGREES THAT IN ACCORDANCE WITH GENERALLY ACCEPTED CONSTRUCTION PRACTICES, CONSTRUCTION CONTRACTOR WILL BE REQUIRED TO ASSUME SOLE AND COMPLETE RESPONSIBILITY FOR JOB SITE CONDITIONS DURING THE COURSE OF CONSTRUCTION OF THE PROJECTS, INCLUDING THE SAFETY OF ALL PERSONS AND PROPERTY THAT THIS REQUIREMENT SHALL BE MADE TO APPLY CONTINUOUSLY AND NOT BE LIMITED TO NORMAL WORKING HOURS, AND CONSTRUCTION CONTRACTOR FURTHER AGREES TO DEFEND, INDEMNIFY AND HOLD DESIGN PROFESSIONAL HARMLESS FROM ANY AND ALL LIABILITY, REAL OR ALLEGED, IN CONNECTION WITH THE PERFORMANCE OF WORK ON THIS PROJECT, EXCEPTING LIABILITY ARISING FROM THE SOLE NEGLIGENCE OF DESIGN PROFESSIONAL.

Plans Prepared Under Supervision Of
ARMSTRONG & BROOKS CONSULTING ENGINEERS
1630 CONSUMER CIRCLE, UNIT "B"
CORONA, CALIFORNIA 92880
VOICE: (951) 372-8400; FAX: (951) 372-8430

William D. Brooks
WILLIAM D. BROOKS
R.C.E. No. C53114
Expires 6/30/07

Date 5-16-06

BENCHMARK: K7-B2
COUNTY SURVEYOR'S BRASS MONUMENT WELL AT THE CENTERLINE INTERSECTION OF NORTH MAIN STREET AND PLACENTIA LANE, ADJUSTED 1971,
ELEV. 833.594

MARK	REVISIONS	APPR	DATE
DESIGNED BY	DRAWN BY	CHECKED BY	MRB

CITY OF RIVERSIDE, CALIFORNIA
PUBLIC WORKS DEPARTMENT

APPROVED BY _____ DATE _____
PRINCIPAL ENGINEER
PARK DEPARTMENT
TRAFFIC-ENGINEER
STREET SERVICES

APPROVED BY [Signature] DATE 5/20/06
CITY ENGINEER

CITY OF RIVERSIDE
REID PARK
SEWER IMPROVEMENT PLANS
ON-SITE SEWER
STA 41+00 - STA 52+70.68

ACCOUNT NO. S-1967
SHEET 4 OF 4

HORIZ. SCALE: AS SHOWN VERT. SCALE: AS SHOWN

INDEXED 6/06/06 Lft