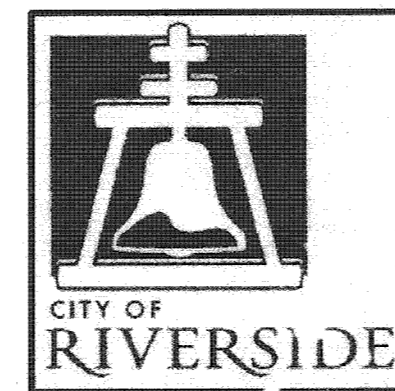


RIVERSIDE



CALIFORNIA

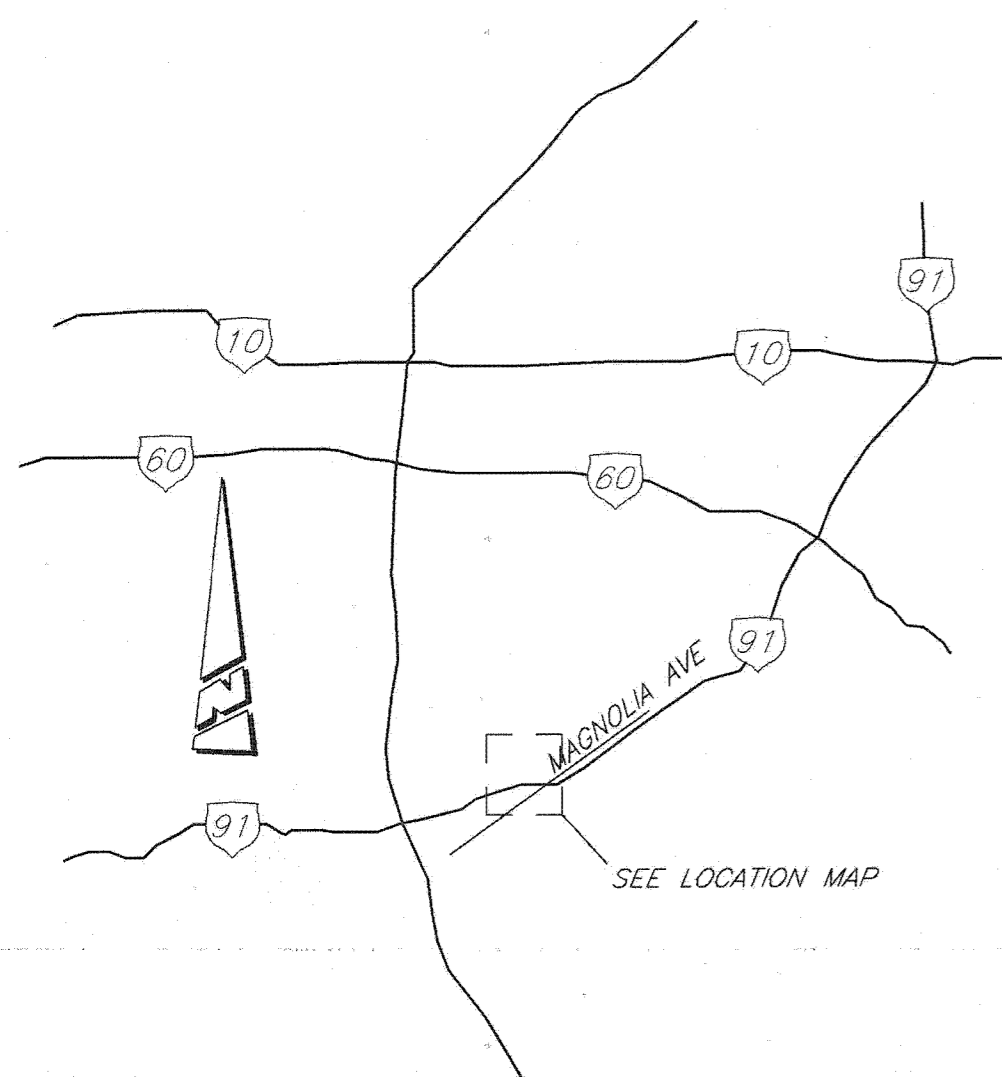
**PUBLIC WORKS DEPARTMENT  
PIERCE STREET SEWAGE PUMP STATION  
VARIABLE FREQUENCY DRIVE  
REPLACEMENT PROJECT**

**PIERCE STREET SEWAGE PUMP STATION  
SUMMARY OF EXISTING EQUIPMENT**

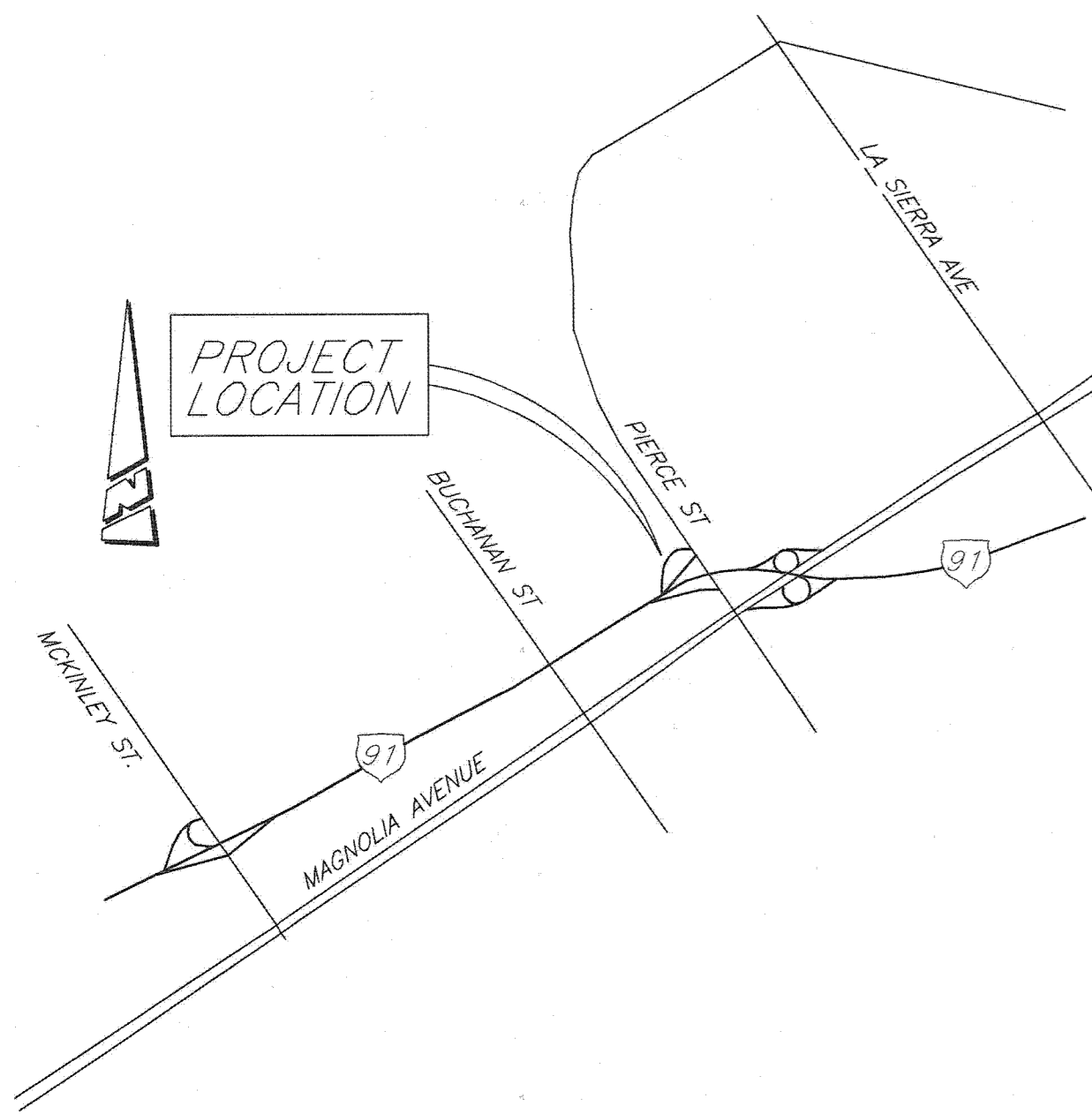
MOTOR AND VARIABLE FREQUENCY DRIVE FOR PUMP NO. 1 AND PUMP NO. 2:  
GEMDRIVE AC MODEL VF2100  
ENCLOSURE DIMENSIONS: 36"W x 20"D x 90"H  
MOTOR MANUFACTURER: US MOTORS MODEL NO. H20295  
100HP - 3PHASE 480 VOLT - 1190 RPM - 123 AMPS  
NEMA NOMINAL EFFICIENCY 95.4 %

MOTOR AND VARIABLE FREQUENCY DRIVE FOR PUMP NO. 3 AND PUMP NO. 4:  
GEMDRIVE AC MODEL VF2200  
ENCLOSURE DIMENSIONS: 36"W x 20"D x 90"H  
MOTOR MANUFACTURER: US MOTORS  
200HP - 3 PHASE 480 VOLT

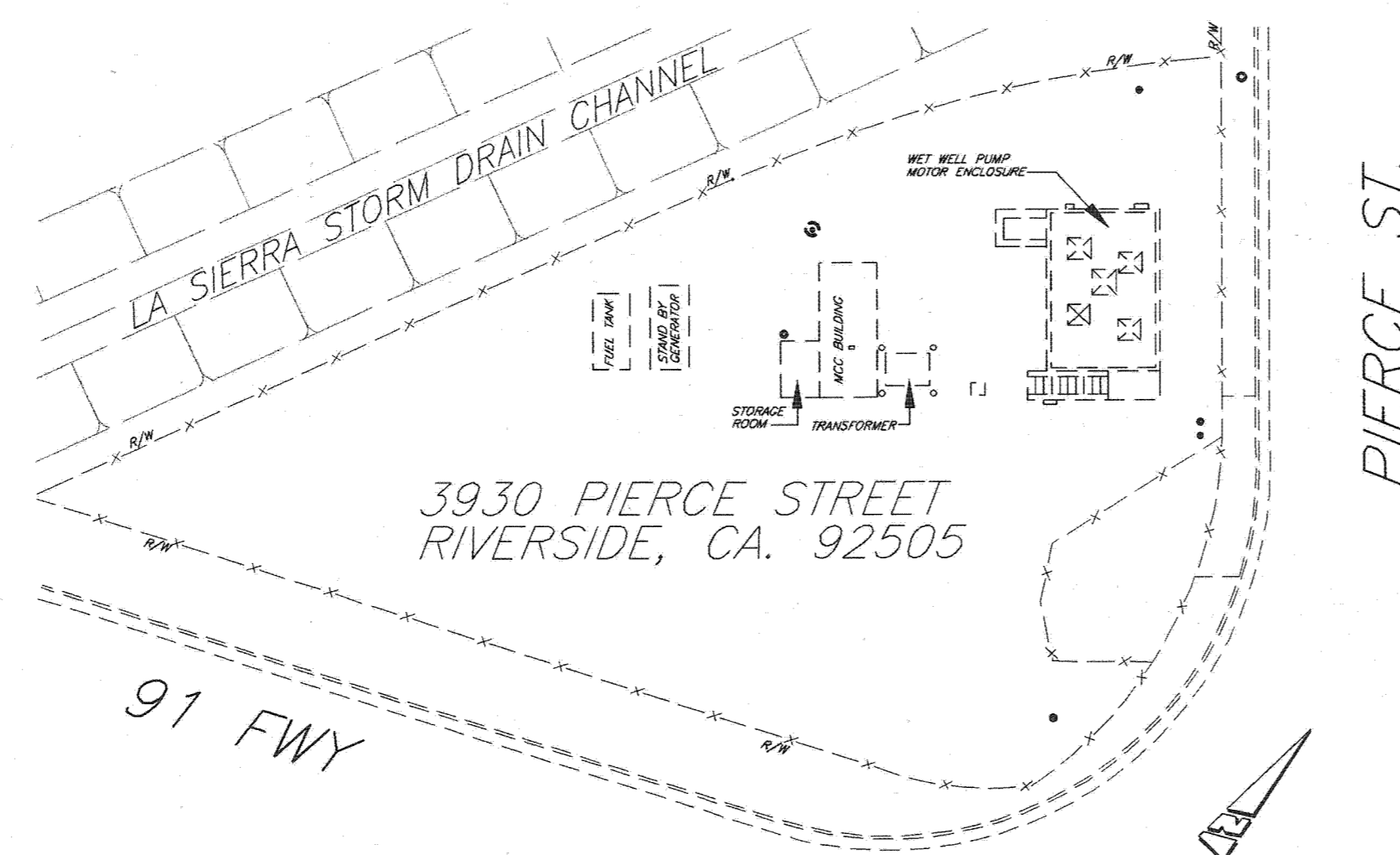
PUMP 1 AND PUMP 3 IS CYCLED TO OPERATE ON ODD DAYS  
PUMP 2 AND PUMP 4 IS CYCLED TO OPERATE ON EVEN DAYS



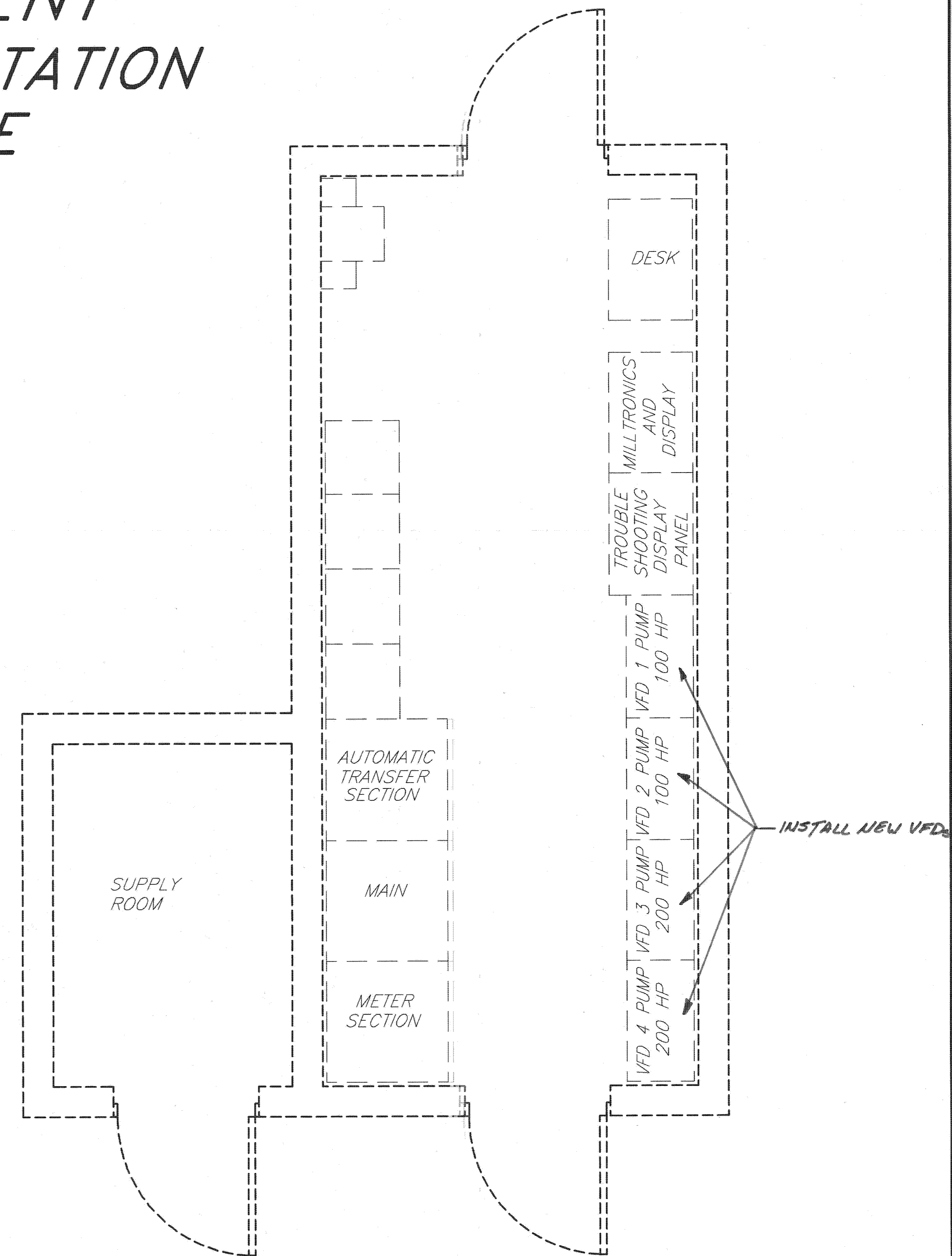
**VICINITY MAP**



**LOCATION MAP**



**SITE PLAN**



**EXISTING MCC BUILDING  
FLOOR PLAN**

**IMPORTANT NOTICE**  
Section 4216/4217 of the Government Code requires a Dig Alert Identification Number to be issued before a "Permit to Excavate" will be valid. For your Dig Alert I.D. Number call Underground Service Alert TOLL FREE 1-800-122-4133 Two working days before you dig.

<b>ENGINEER IN RESPONSIBLE CHARGE</b> LARRY L. YOUNG R.C.E. No. 42316 expires 3/31/08 DATE 3/20/2007		CITY OF RIVERSIDE, CALIFORNIA PUBLIC WORKS DEPARTMENT		<b>PIERCE STREET PUMP STATION WFD REPLACEMENT PROJECT</b>	W.O. 0707842 ACCT. NO.: 9798423203-440301xx
		APPROVED BY: [Signature] ENGINEERING MANAGER PRINCIPAL ENGINEER	BY DATE: [Signature] 3/20/07 CITY ENGINEER	DATE: 3/20/07	SHEET 1 OF 1

INDEXED 4-09-07 LfH