

SEWER IMPROVEMENT PLANS FOR: TRACT No. 33730

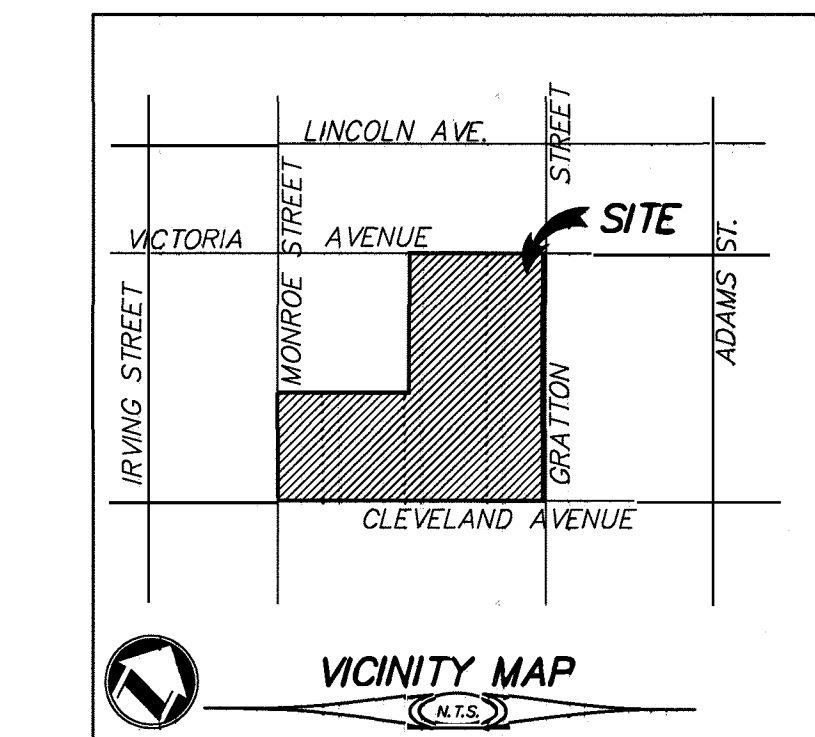
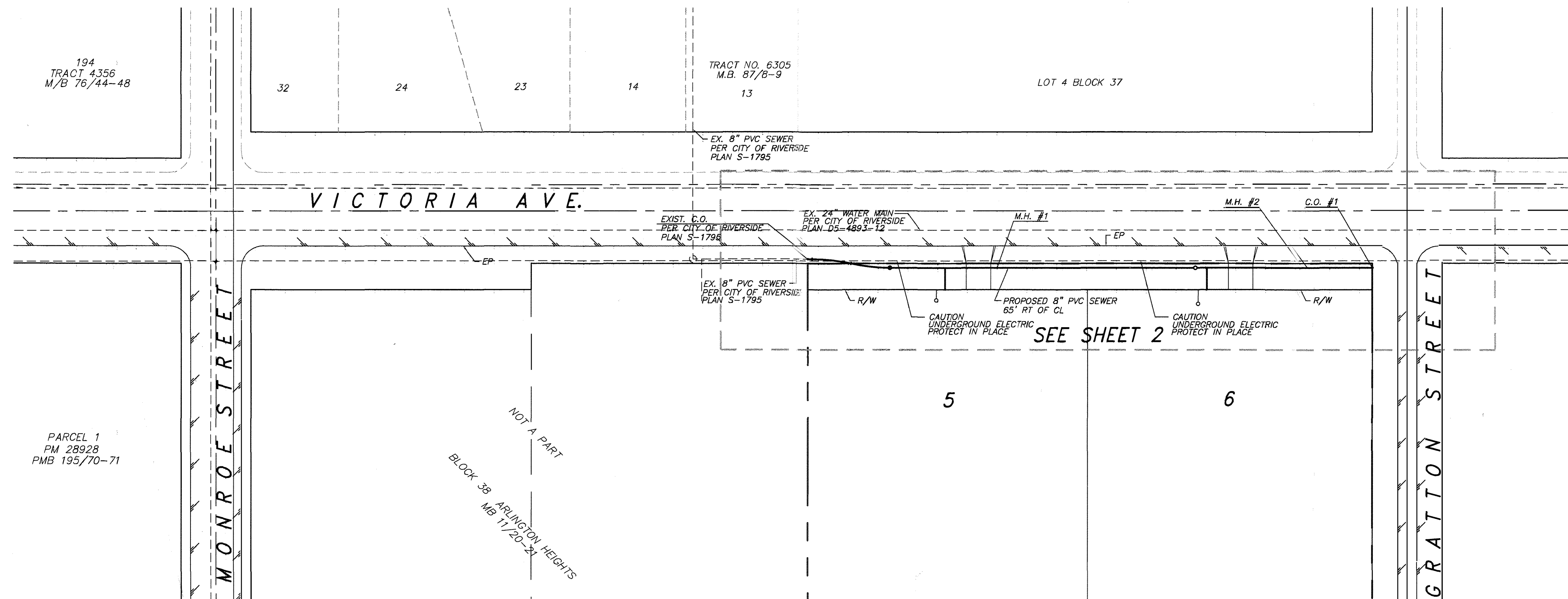
GENERAL NOTES

- NO PERSON SHALL PERFORM ANY CONSTRUCTION ACTIVITY OR INSTALL ANY OBJECTS WITHIN THE PUBLIC RIGHT-OF-WAY OR EASEMENTS OF THE CITY OF RIVERSIDE WITHOUT A VALID CONSTRUCTION PERMIT OR, A STREET OPENING PERMIT OR AN ENCROACHMENT PERMIT ISSUED BY THE CITY'S PUBLIC WORKS DEPARTMENT.
- IT SHALL BE THE RESPONSIBILITY OF THE CONTRACTOR TO CLEAR THE RIGHT OF WAY IN ACCORDANCE WITH THE PROVISIONS OF LAW AS IT AFFECTS EACH UTILITY INCLUDING IRRIGATION LINES AND APPURTENANCES AND AT NO COST TO THE CITY.
- CONSTRUCTION SHALL BE IN ACCORDANCE WITH THE CITY OF RIVERSIDE DEPARTMENT OF PUBLIC WORKS, STANDARD DRAWINGS, ITS SUPPLEMENTAL NOTES AND THE STANDARD SPECIFICATIONS FOR PUBLIC WORKS CONSTRUCTION, CURRENT EDITION.
- THE PRIVATE ENGINEER SIGNING THESE PLANS IS RESPONSIBLE FOR ASSURING THE ACCURACY AND ACCEPTABILITY OF THE WORK HEREON. IN THE EVENT OF DISCREPANCIES ARISING DURING CONSTRUCTION, THE PRIVATE ENGINEER SHALL BE RESPONSIBLE FOR DETERMINING AN ACCEPTABLE SOLUTION AND REVISING THE PLANS FOR APPROVAL BY THE CITY.
- QUANTITIES SHOWN ARE FOR INFORMATION ONLY AND THE CITY OF RIVERSIDE IS NOT RESPONSIBLE FOR THEIR ACCURACY.
- THE DEVELOPER SHALL BE RESPONSIBLE FOR PRESERVING OR RE-ESTABLISHING AND REFERENCING SURVEY MONUMENTS DESTROYED, DISTURBED OR BURIED AS A RESULT OF CONSTRUCTION SHOWN HEREON.
- ALL FLAGGED ELEVATIONS SHALL BE STAKED IN THE FIELD BY THE PRIVATE ENGINEER.
- THE CONTRACTOR SHALL CALL IN A LOCATION REQUEST TO UNDERGROUND SERVICE ALERT (USA), PHONE # 1-800-227-2600, TWO WORKING DAYS BEFORE DIGGING. NO CONSTRUCTION PERMIT WILL BE ISSUED BY THE PUBLIC WORKS DEPARTMENT INVOLVING EXCAVATION FOR UNDERGROUND FACILITIES UNLESS THE APPLICANT HAS BEEN PROVIDED AN INQUIRY IDENTIFICATION NUMBER BY U.S.A.
- CONTRACTOR IS TO VERIFY EXISTING SEWER ELEVATION PRIOR TO CONSTRUCTION.
- LOCATION OF LATERALS TO BE DETERMINED IN THE FIELD AT THE DIRECTION OF THE OWNER. AVOID CONFLICT WITH PROPOSED AND/OR EXISTING FACILITIES.
- NO FINISHED FLOOR ELEVATION SHALL BE LESS THAN 6" ABOVE THE UPPER MANHOLE RIM ELEVATION OF THE SEWER LINE SEGMENT BEING CONNECTED TO, WITHOUT HAVING A PROPER BACKWATER VALVE INSTALLED IN THE LATERAL.
- A PLUG SHALL BE INSTALLED AND WILL REMAIN IN PLACE WHERE THE NEW SEWER CONNECTS WITH THE EXISTING SEWER UNTIL THE NEW SEWER IS ACCEPTED BY THE CITY.
- THE SEWER CONTRACTOR SHALL ADJUST MANHOLES TO FINAL GRADE AFTER PAVING IS COMPLETED.

CONSTRUCTION NOTES AND QUANTITY ESTIMATE

THE QUANTITIES SHOWN BELOW ARE FOR BONDING INFORMATION ONLY. THE CONTRACTOR IS TO CONSTRUCT PROJECT PER THESE PLANS AND SUBMIT CONSTRUCTION BID BASED ON THEIR OWN QUANTITY "TAKE-OFF".

- | | |
|--|--------------|
| ① CONSTRUCT 8" P.V.C. SEWER WITH CASE II BEDDING PER CITY STD. DWD. NO. 452 | 642 LF |
| ② CONSTRUCT MANHOLE PER C/R/W. STD. DWG. 500 | 2 EA |
| ③ CONSTRUCT 4" P.V.C. SEWER LATERAL WITH C.O. AT R/W PER C/R/W. STD. DWG. 562A | 2 @ 35 LF EA |
| ④ CONSTRUCT MAINLINE CLEANOUT PER CITY STD. DWG. NO. 560 | 1 EA |



LEGEND

CL	CENTERLINE
R/W	RIGHT OF WAY
MH	MANHOLE
CO	CLEANOUT
○	WATER SERVICE
⊕	WATER SERVICE (BY CITY FORCES)
○	SEWER LATERAL



CITY OF RIVERSIDE BUSINESS TAX ACCT. #058833 EXP:1/1/08

CITY OF RIVERSIDE
PUBLIC UTILITIES DEPARTMENT
WATER SYSTEM

APPROVED BY: *[Signature]* DATE: 7/23/07

CITY OF RIVERSIDE
PUBLIC UTILITIES DEPARTMENT
OVERHEAD & UNDERGROUND

APPROVED BY: *[Signature]* DATE: 7/23/07

Underground Service Alert

Call: TOLL FREE
1-800-227-2600

TWO WORKING DAYS BEFORE YOU DIG

PLANS PREPARED BY:
adkan ENGINEERS
Civil Engineering - Surveying - Planning
6820 Airport Drive, Riverside, CA 92504
Tel: (951) 898-0241 Fax: (951) 888-0599

Under the Supervision of: *[Signature]* 7/24/07

BENCHMARK:
CITY OF RIVERSIDE BENCH MARK NO. F5-E
P.K. NAIL AND TAG IN THE CULVERT HEADWALL AT THE E.Y. CORNER OF VICTORIA AVENUE AND MONROE STREET. F.B. 739-78.

ELEVATION: 873.374

MARK	REVISIONS	APPR.	DATE

DESIGNED BY: RH DRAWN BY: CO CHECKED BY: C-

**CITY OF RIVERSIDE
PUBLIC WORKS DEPARTMENT**

APPROVED BY: *[Signature]* DATE: 8/2/07
PRINCIPAL ENGINEER

APPROVED BY: *[Signature]* DATE: 8/2/07
CITY ENGINEER

SEWER IMPROVEMENT PLAN

TRACT 33730
STA. 1+32.38 TO STA. 7+73.44
COVER SHEET
A.P.N. 238-080-012-6,
238-080-010-4, AND 238-080-013-7

HORIZ. SCALE: AS NOTED VERT. SCALE: N/A

PW07-0027

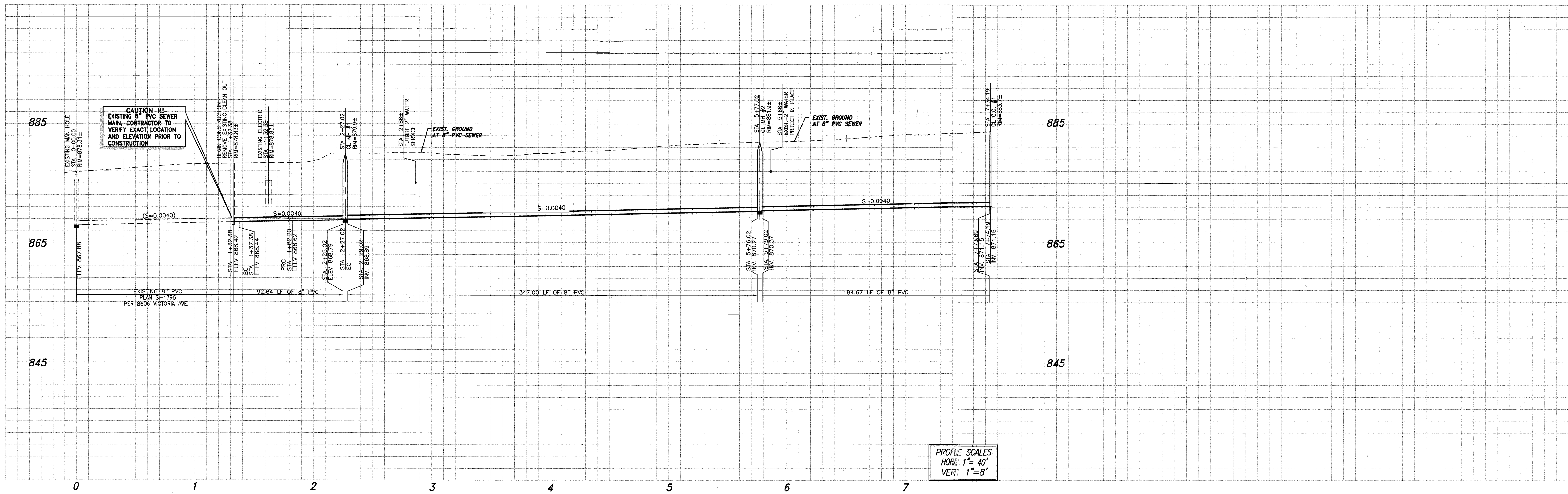
ACCO UN'N Q

S-2028

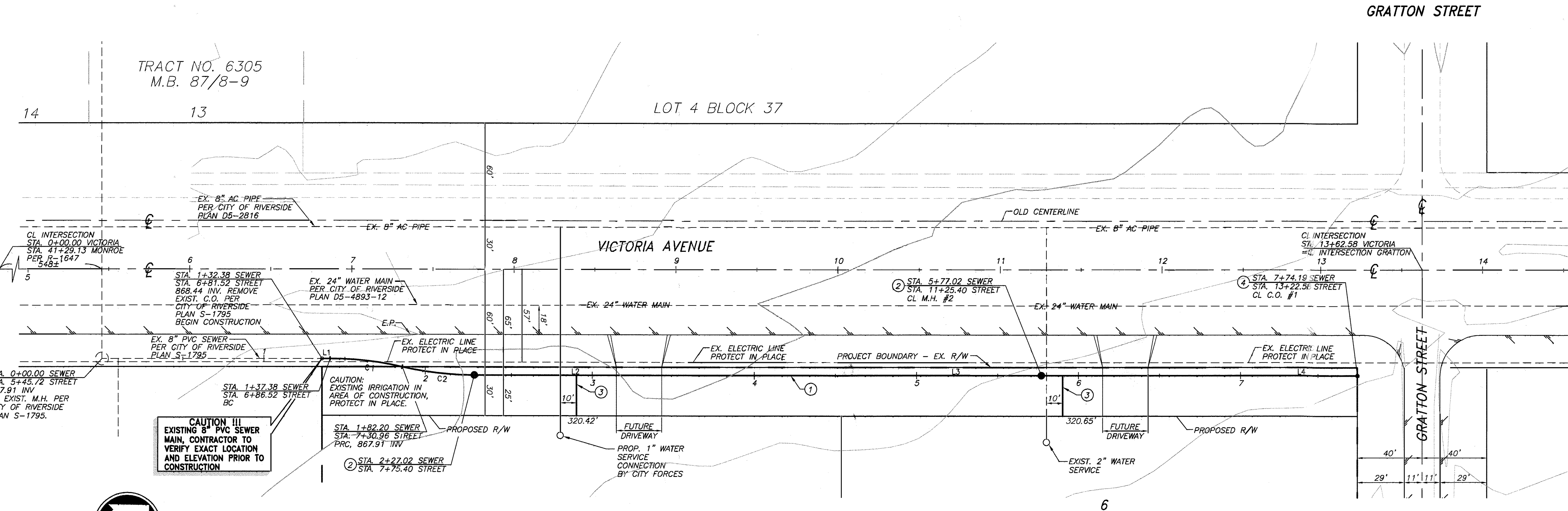
SHEET 1 OF 2

J.N. 6854

INDEXED 8-13-07 LPH



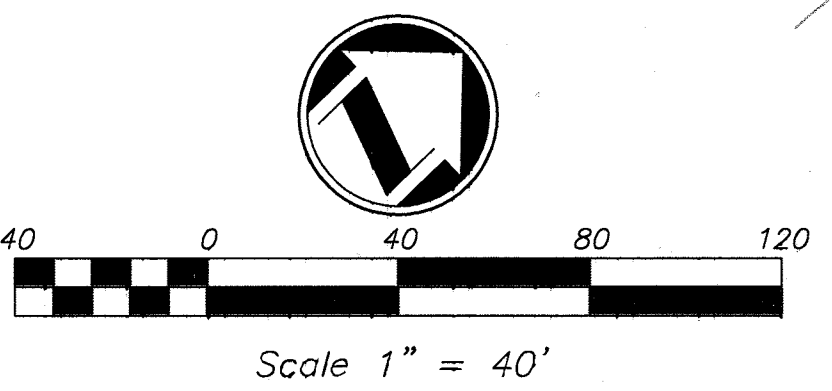
PROFILE SCALES
 HORZ. 1" = 40'
 VERT. 1" = 8'



- CONSTRUCTION NOTES**
- 1 CONSTRUCT 8" PVC SEWER WITH CASE II BEDDING PER CITY STD. DWD. NO. 452
 - 2 CONSTRUCT MANHOLE PER C/RIV. STD. DWG. 500
 - 3 CONSTRUCT 4" PVC SEWER LATERAL WITH C.O. AT R/W PER C/RIV. STD. DWG. 562A
 - 4 CONSTRUCT MAINLINE CLEANOUT PER CITY STD. DWG. NO. 560

NUMBER	DIRECTION	DISTANCE
L1	N 56°00'27" E	5.00'
L2	N 56°00'27" E	122.98'
L3	N 56°00'27" E	350.00'
L4	N 56°00'27" E	74.19'

NUMBER	Δ	T	R	L
C1	12°50'19"	22.50	200.00	44.82
C2	12°50'19"	22.50	200.00	44.82



VICTORIA AVENUE

CITY OF RIVERSIDE BUSINESS TAX ACCT.#058833 EXP.1/1/08

PLANS PREPARED BY:
adkan ENGINEERS
 Civil Engineering - Surveying - Planning
 6820 Airport Drive, Riverside, CA 92504
 Tel:(951) 988-0241 Fax:(951) 688-0593
 Under the supervision of: *[Signature]* 7/24/07
 Chassia Lopez, R.C.E. 5390 Exp. 06/30/09

BENCHMARK:
 CITY OF RIVERSIDE BENCH MARK NO. F5-E
 P.K. NAIL AND TAG IN THE CULVERT
 HEADWALL AT THE ELY. CORNER OF
 VICTORIA AVENUE AND MONROE STREET.
 F.B. 738-78.
ELEVATION: 873.374

MARK	REVISIONS	APPR.	DATE

DESIGNED BY: RH DRAWN BY: CO CHECKED BY: C

CITY OF RIVERSIDE PUBLIC WORKS DEPARTMENT

APPROVED BY: *[Signature]* DATE: 7/23/07
 PRINCIPAL ENGINEER

APPROVED BY: *[Signature]* DATE: 7/23/07
 CITY ENGINEER

DATE: 7/23/07

PW07-0027

SEWER IMPROVEMENT PLAN
 AC COUNT NO.

TRACT 33730
 VICTORIA AVENUE
 STA. 1+32.38 TO STA. 7+73.44
 A.P.N. 238-080-012-6
 238-080-010-4, AND 238-080-013-7

S-2028
 SHEET 2 OF 2

HORIZ. SCALE: 1" = 40' VERT. SCALE: 1" = 8'
 J.N. 6854

CITY OF RIVERSIDE PUBLIC UTILITIES DEPARTMENT WATER SYSTEM

APPROVED BY: *[Signature]* DATE: 7/23/07
 VOID ONE YEAR FROM THIS DATE

CITY OF RIVERSIDE PUBLIC UTILITIES DEPARTMENT OVERHEAD & UNDERGROUND

APPROVED BY: *[Signature]* DATE: 7/23/07

Underground Service Alert

Call: TOLL FREE
1-800-227-2600

TWO WORKING DAYS BEFORE YOU DIG

INDEXED 8-13-07