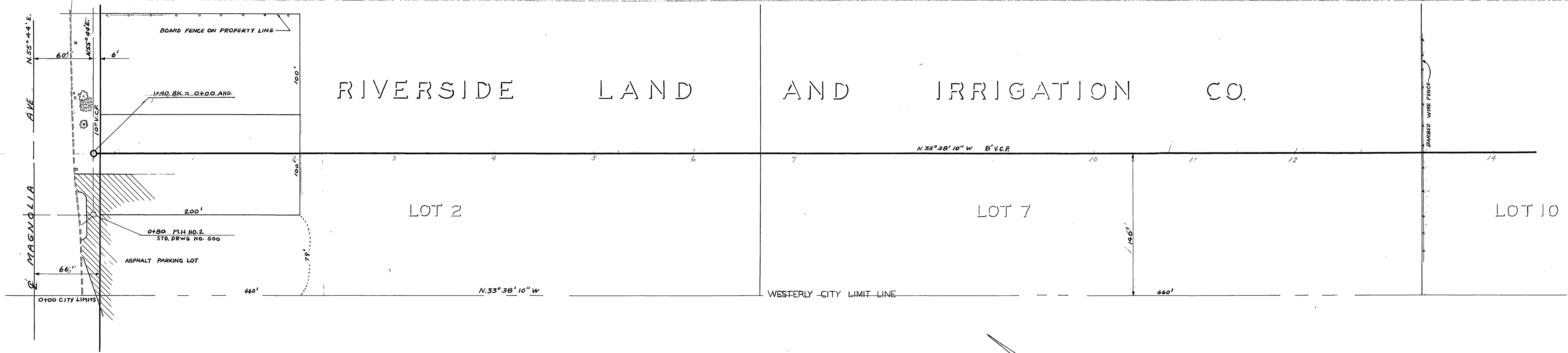


Existing Ground Line Over Sewer
 SCALE 1"=5' VERT.
 1"=50' HOR.
 F.B. 651/24 & 626/70
 B.M. Spk'n Pole # 3+62.1 2' sly. of E Magnolia
 at City Limit Line. EL. 730.90
 B.M. Top 1 1/4" ip. of City Limit Line and
 W. Edge of Frwy. R/W. EL. 740.26

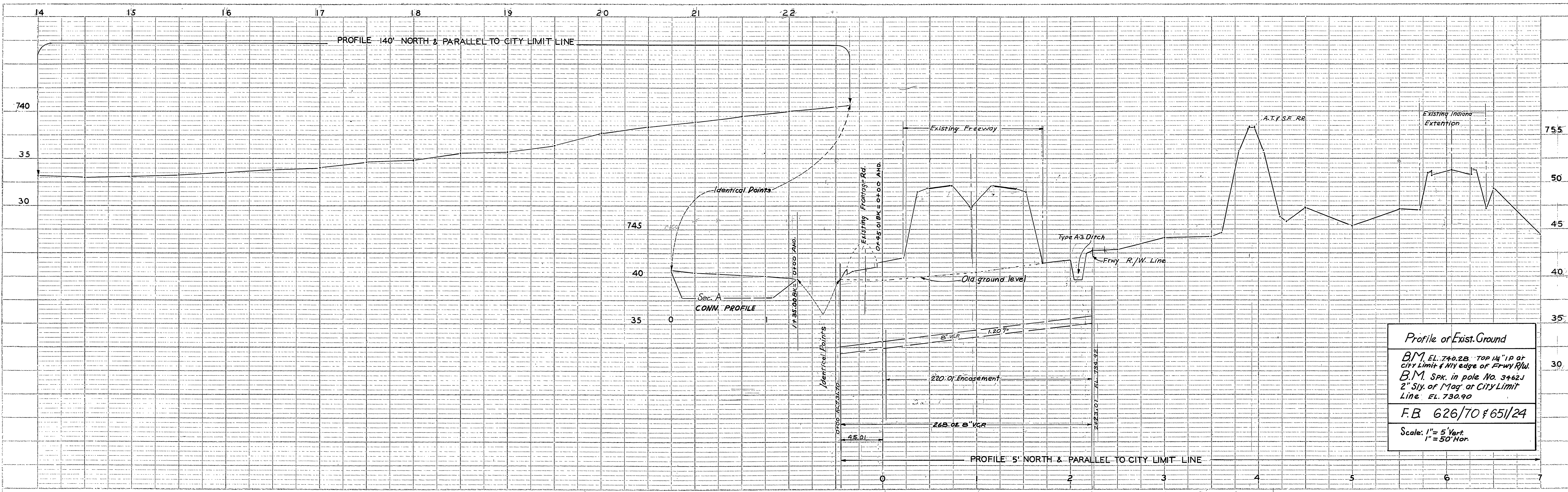


4 lots/Ac
 3.5 people/Lot

DRY SEWER & EXIST SEWER ON MAGNOLIA
 PLANS IN GORMANUS DESK
 SEWER STRAY ON TOPO SHEET THERE ALSO
 OR IF NOT, PREPARE ONE

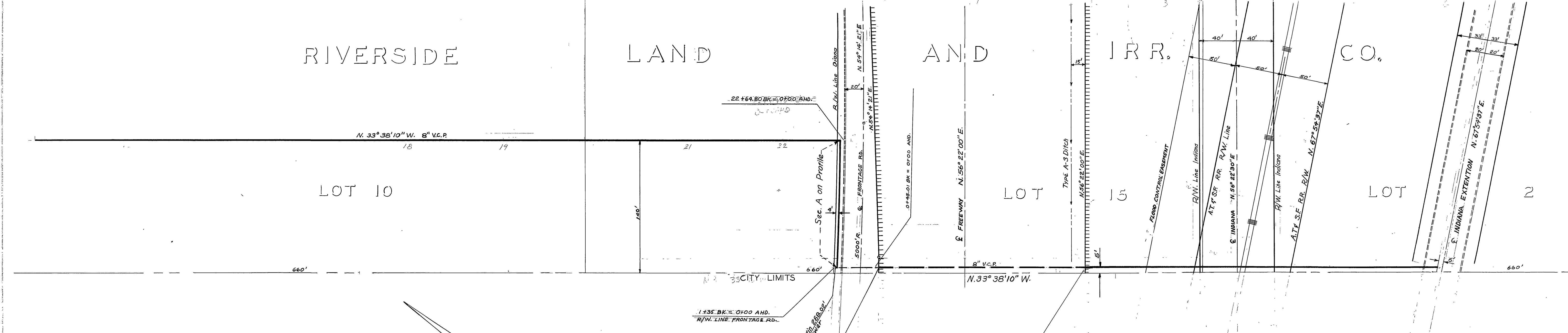
Scale 1"=50'

REVISIONS		CITY OF RIVERSIDE, CALIFORNIA DEPARTMENT OF PUBLIC WORKS	
MARK	DATE	DESCRIPTION	
			WOODLAND HEIGHTS TRUNK SEWER
			ALONG S.W. CITY LIMITS MAGNOLIA TO INDIANA
DESIGNED BY	CHECKED BY	APPROVED BY	S-203 SHEET 07
DRAWN BY JAW/loch		DIRECTOR OF PUBLIC WORKS	
RECOMMENDED BY	ASSISTANT CITY ENGINEER	DATE	



Profile of Exist. Ground
 B.M. EL. 740.28 TOP 1 1/2" I.P. at City Limit & NW edge of Fwy. R/W.
 B.M. SPK. in pole No. 3+62.1 2" Sp. of 1" I.P. at City Limit Line EL. 730.90
 F.B. 626/70 & 651/24
 Scale: 1" = 5' Vert.
 1" = 50' Hor.

PROFILE	
NO.	DATE
DESIGNED BY	
CHECKED BY	
APPROVED BY	



Scale 1" = 50'

PLAN	
NO.	DATE
DESIGNED BY	
CHECKED BY	
APPROVED BY	

REVISIONS		
MARK	DATE	DESCRIPTION

CITY OF RIVERSIDE CALIFORNIA
 DEPARTMENT OF PUBLIC WORKS
 WOODLAND HEIGHTS TRUNK SEWER
 ALONG S.W. CITY LIMITS
 MAGNOLIA TO INDIANA

DESIGNED BY: J.A. WLOCH
 CHECKED BY:
 APPROVED BY:
 DIRECTOR OF PUBLIC WORKS
 DATE: _____
 ASSISTANT CITY ENGINEER

S-203
 SHEET OF