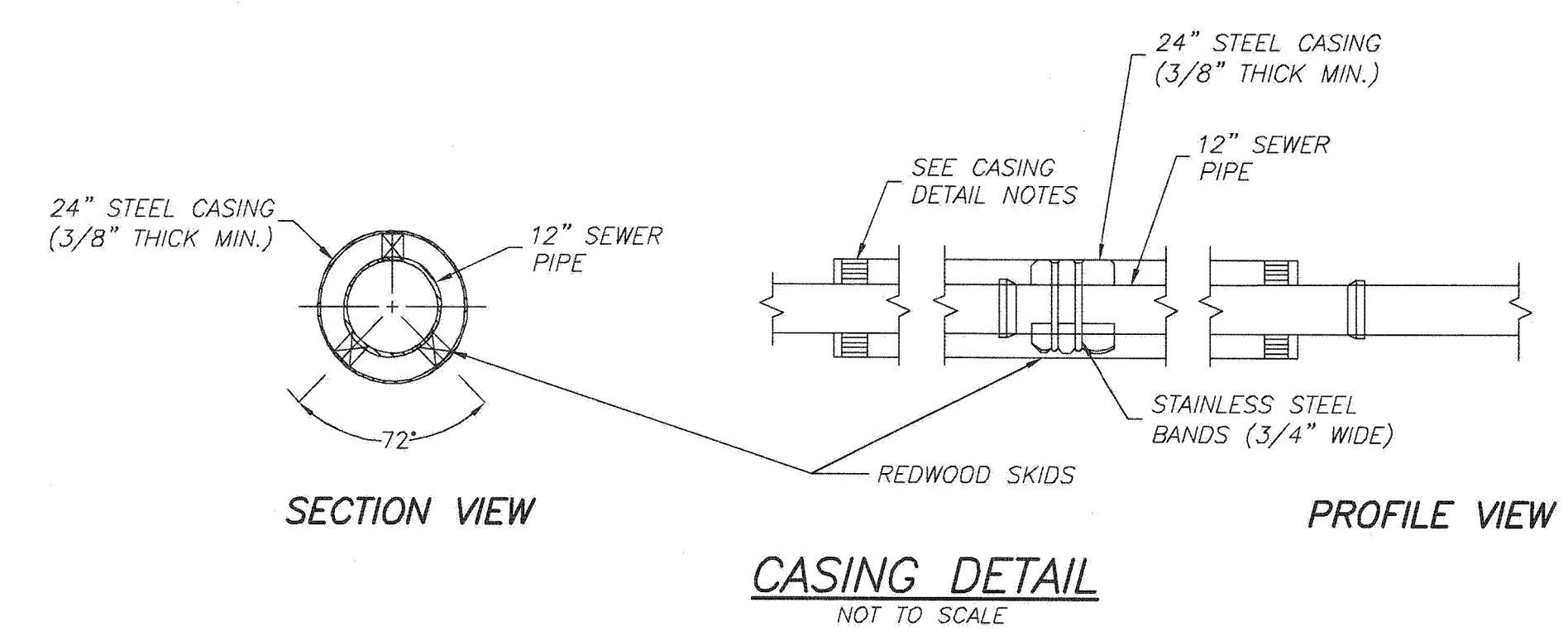
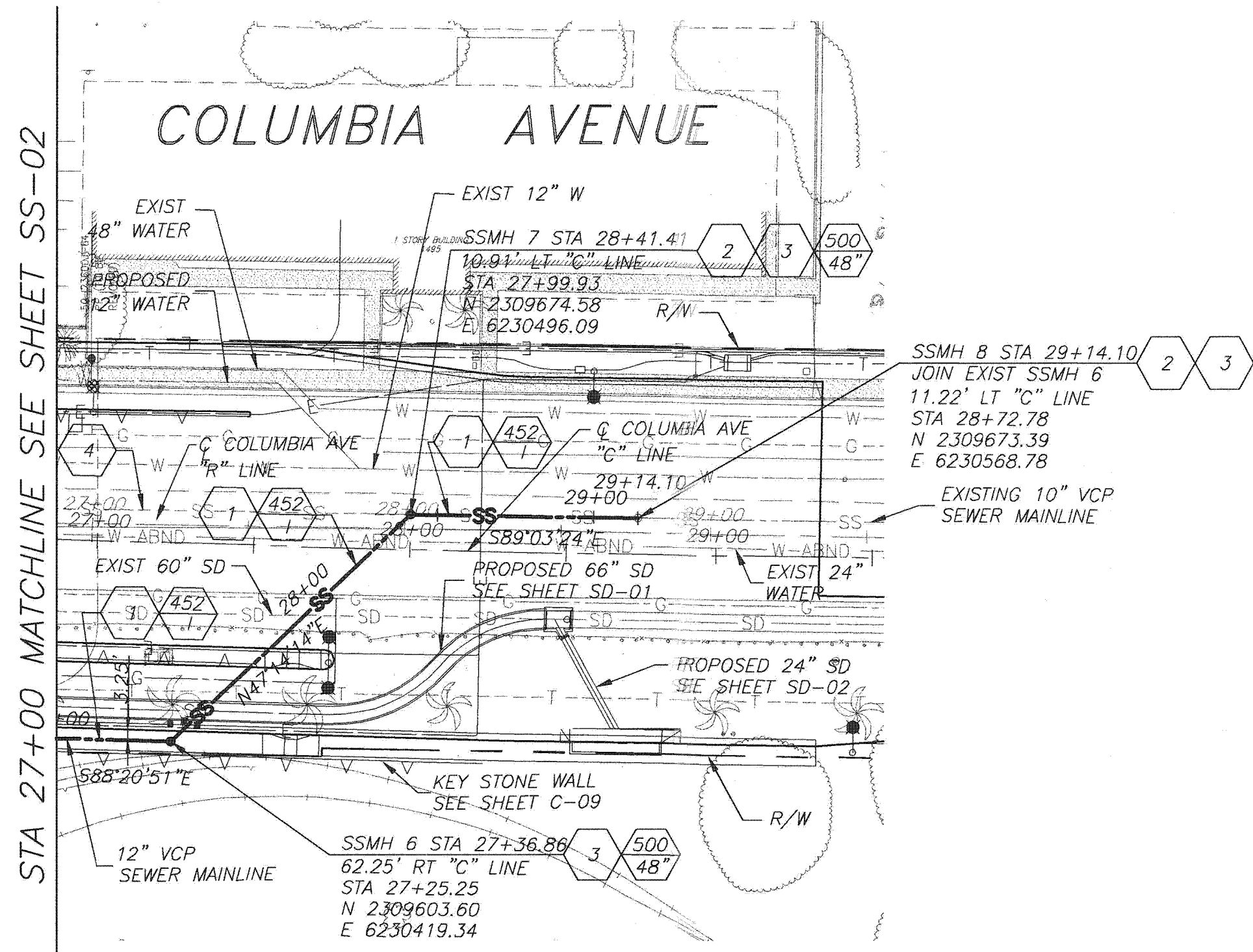


PROFILE - SEWER MAINLINE
 HORIZ. SCALE: 1"=40'
 VERT. SCALE: 1"=4'



CASING DETAIL NOTES

- SKIDS SHALL BE REDWOOD, 30" LONG, 4" WIDE, AND OF SUFFICIENT HEIGHT TO PROVIDE A MINIMUM 2" CLEARANCE BETWEEN INVERT OF CASING AND BELL OF VCP. ALL SKIDS SHALL BE OF EQUAL DIMENSIONS AND POSITIONED UNIFORMLY.
- ALL STEEL CASING PIPE FIELD JOINTS SHALL BE WELDED WITH A CONTINUOUS CIRCUMFERENTIAL WELDS.
- CARRIER PIPE SHALL BE AIR TESTED PRIOR TO SLURRY BACKFILLING AND SEALING CASING.
- VOID BETWEEN CASING AND CARRIER PIPE SHALL BE FILLED WITH A ONE SACK PCC SLURRY MIX.
- UPSTREAM AND DOWNSTREAM ELEVATIONS TO BE VERIFIED PRIOR TO SEALING CASING.
- ENDS OF CASING TO BE SEALED WITH BRICK AND MORTAR. PLACE 1" DIA MINIMUM PVC PIPE AT INVERT OF CASING (THROUGH BRICK) AND SURROUND WITH 2 CUBIC FEET OF CRUSHED ROCK.



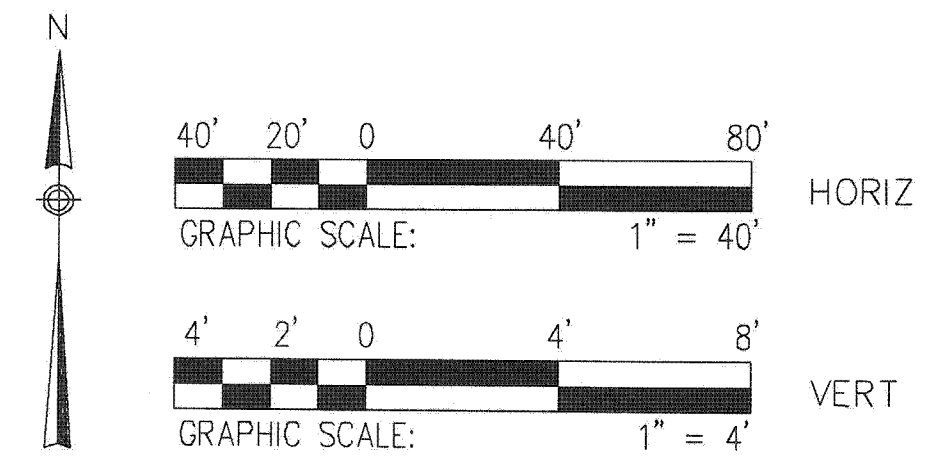
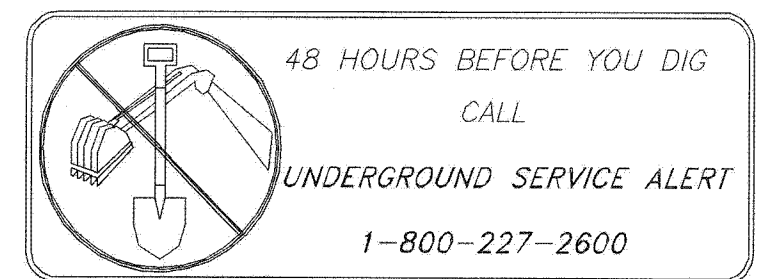
PLAN - SEWER MAINLINE
 SCALE: 1"=40'

CONSTRUCTION NOTES

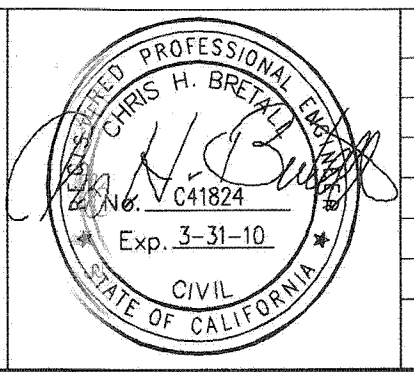
- CONSTRUCT 12" EXTRA STRENGTH VITRIFIED CLAY PIPE (VCP) SEWER, TYPE "G" JOINTS
- CONTRACTOR TO VERIFY EXISTING SEWER ELEVATION PRIOR TO CONSTRUCTION
- CONTRACTOR TO ADJUST SEWER MANHOLES TO FINAL GRADE AFTER PAVING IS COMPLETED
- ABANDON SANITARY SEWER FACILITIES & SLURRY FILL PER SPECIFICATIONS

GENERAL NOTES

- CONSTRUCTION SHALL BE IN ACCORDANCE WITH THE CITY OF RIVERSIDE PUBLIC WORKS STANDARD DRAWINGS AND STANDARD SPECIFICATIONS FOR PUBLIC WORKS CONSTRUCTION (SSPWC) 2006 EDITION.
- CONTRACTOR TO CALL UNDERGROUND SERVICE ALERT (USA) (800) 422-4133, TWO WORKING DAYS PRIOR TO DIGGING.
- PRIOR TO ISSUANCE OF GRADE SHEETS FOR ANY PROPOSED SEWER AND STORM DRAIN FACILITIES CONTRACTOR SHALL EXPOSE ALL UTILITIES WHICH CROSS OR MAY BE IN CONFLICT WITH THE PROPOSED SEWER AND STORM DRAIN FACILITIES AND COORDINATE WITH THE INSPECTOR TO HAVE THE LOCATION AND ELEVATION VERIFIED BY CONTRACTOR'S SURVEYORS.
- FOR SEWER PIPE WITHIN ZONE "B" PER CITY OF RIVERSIDE PUBLIC UTILITIES STANDARD DRAWING No. CWD-015-2, JOINT TYPE "G" PER THE SSPWC SHALL BE USED.



DMJM HARRIS | AECOM
 800 NORTH HAVEN, SUITE 410
 ONTARIO, CA 91764
 T (909)291-8150 F (909)291-8166



MARK	REVISIONS	APPR.	DATE

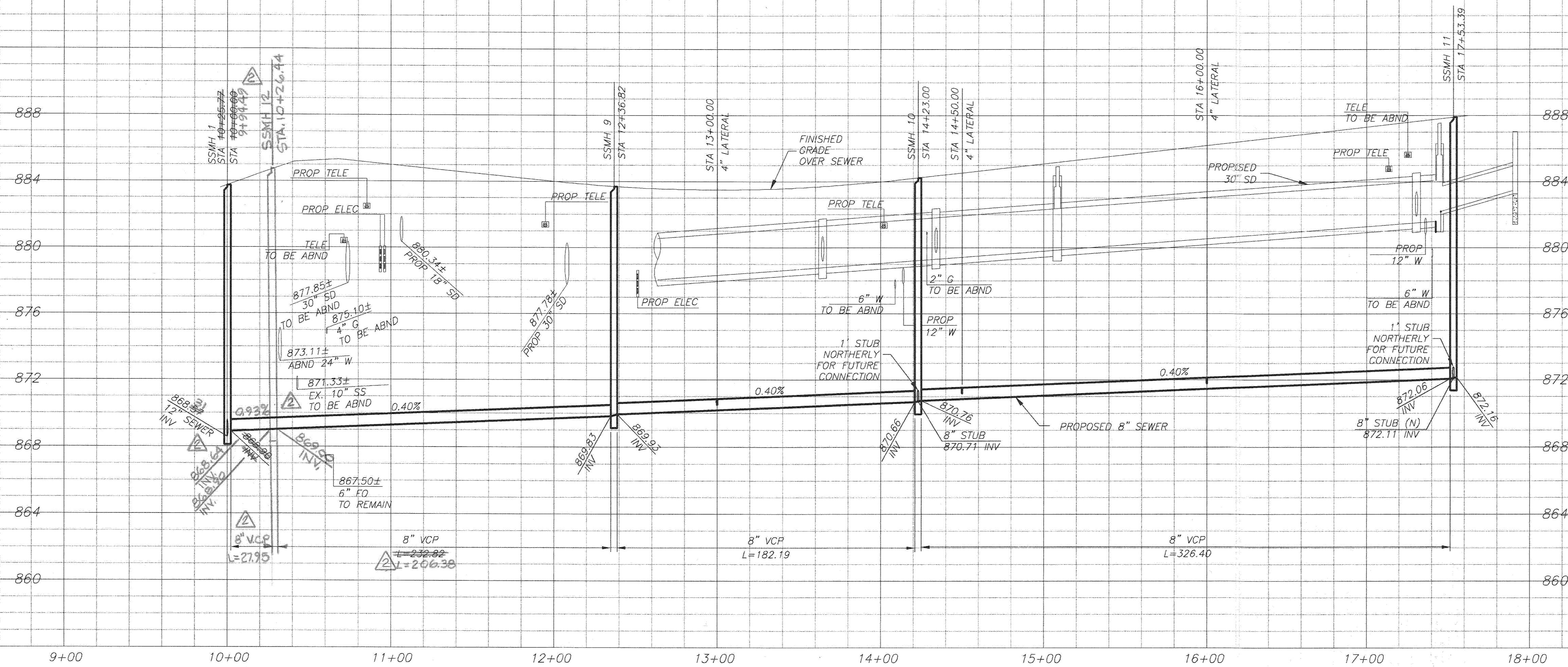
DESIGNED BY **AT** DRAWN BY **AT** CHECKED BY **C.B.**

COLUMBIA AVENUE OVERPASS AT BNSF RAILROAD

**PLAN AND PROFILE
 SANITARY SEWER RELOCATION SHT 3**

ACCT. NO. -
**S-2032
 SS-03**
 SHEET 40 OF 103

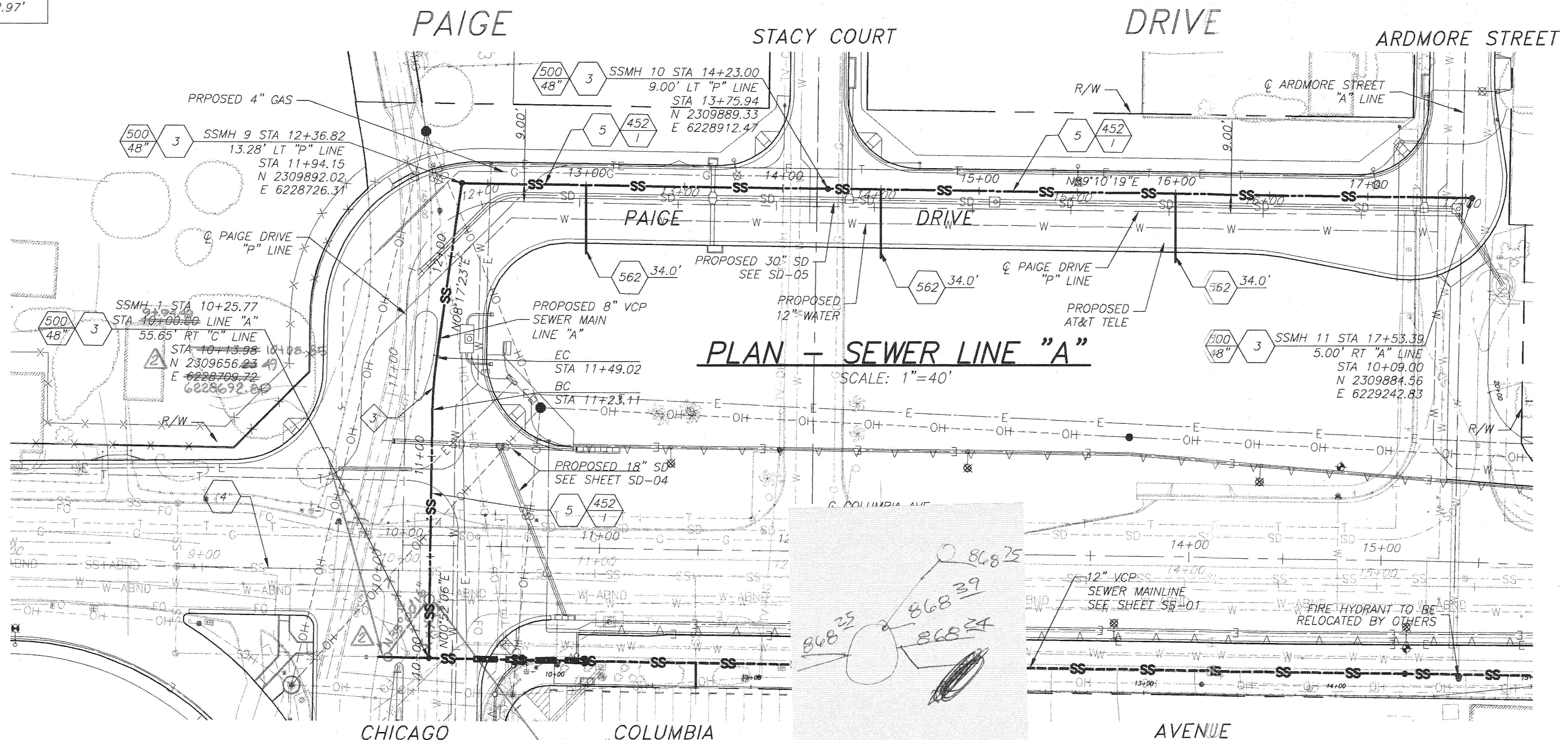
FILE: P:\CADD\2009\2032 Columbia Ave SSMH 6-8.dwg PLOTTED: Jul 14, 2009 8:48am PLOTTER: HP DesignJet 2400 Plotter
 XREFS: ssmh_6-8.dwg, ssmh_6-7.dwg, ssmh_6-8.dwg, ssmh_6-9.dwg, ssmh_6-10.dwg, ssmh_6-11.dwg, ssmh_6-12.dwg, ssmh_6-13.dwg, ssmh_6-14.dwg, ssmh_6-15.dwg, ssmh_6-16.dwg, ssmh_6-17.dwg, ssmh_6-18.dwg, ssmh_6-19.dwg, ssmh_6-20.dwg, ssmh_6-21.dwg, ssmh_6-22.dwg, ssmh_6-23.dwg, ssmh_6-24.dwg, ssmh_6-25.dwg, ssmh_6-26.dwg, ssmh_6-27.dwg, ssmh_6-28.dwg, ssmh_6-29.dwg, ssmh_6-30.dwg, ssmh_6-31.dwg, ssmh_6-32.dwg, ssmh_6-33.dwg, ssmh_6-34.dwg, ssmh_6-35.dwg, ssmh_6-36.dwg, ssmh_6-37.dwg, ssmh_6-38.dwg, ssmh_6-39.dwg, ssmh_6-40.dwg, ssmh_6-41.dwg, ssmh_6-42.dwg, ssmh_6-43.dwg, ssmh_6-44.dwg, ssmh_6-45.dwg, ssmh_6-46.dwg, ssmh_6-47.dwg, ssmh_6-48.dwg, ssmh_6-49.dwg, ssmh_6-50.dwg, ssmh_6-51.dwg, ssmh_6-52.dwg, ssmh_6-53.dwg, ssmh_6-54.dwg, ssmh_6-55.dwg, ssmh_6-56.dwg, ssmh_6-57.dwg, ssmh_6-58.dwg, ssmh_6-59.dwg, ssmh_6-60.dwg, ssmh_6-61.dwg, ssmh_6-62.dwg, ssmh_6-63.dwg, ssmh_6-64.dwg, ssmh_6-65.dwg, ssmh_6-66.dwg, ssmh_6-67.dwg, ssmh_6-68.dwg, ssmh_6-69.dwg, ssmh_6-70.dwg, ssmh_6-71.dwg, ssmh_6-72.dwg, ssmh_6-73.dwg, ssmh_6-74.dwg, ssmh_6-75.dwg, ssmh_6-76.dwg, ssmh_6-77.dwg, ssmh_6-78.dwg, ssmh_6-79.dwg, ssmh_6-80.dwg, ssmh_6-81.dwg, ssmh_6-82.dwg, ssmh_6-83.dwg, ssmh_6-84.dwg, ssmh_6-85.dwg, ssmh_6-86.dwg, ssmh_6-87.dwg, ssmh_6-88.dwg, ssmh_6-89.dwg, ssmh_6-90.dwg, ssmh_6-91.dwg, ssmh_6-92.dwg, ssmh_6-93.dwg, ssmh_6-94.dwg, ssmh_6-95.dwg, ssmh_6-96.dwg, ssmh_6-97.dwg, ssmh_6-98.dwg, ssmh_6-99.dwg, ssmh_6-100.dwg



PROFILE - SEWER LINE "A"

HORIZ. SCALE: 1"=40'
VERT. SCALE: 1"=4'

CURVE DATA				
CURVE	R	Δ	L	T
3	200.00'	07°25'17"	25.91'	12.97'



PLAN - SEWER LINE "A"

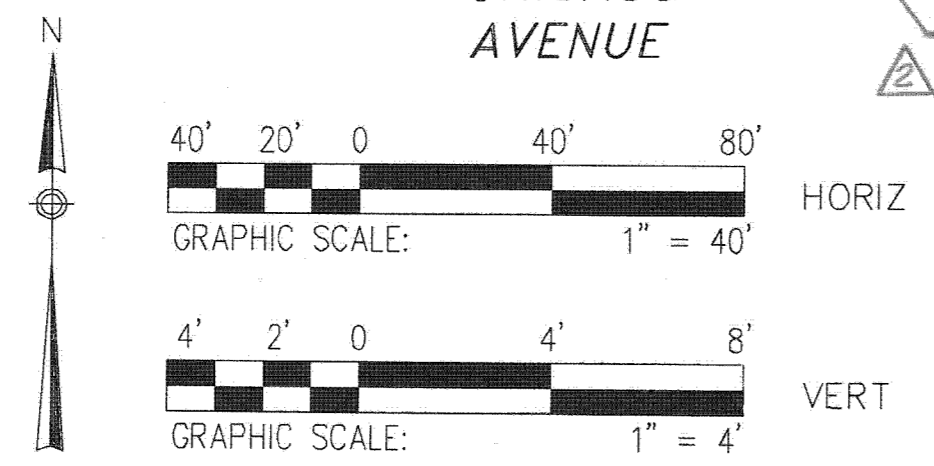
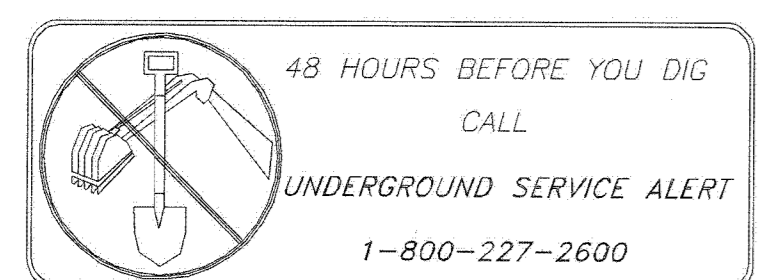
SCALE: 1"=40'

CONSTRUCTION NOTES

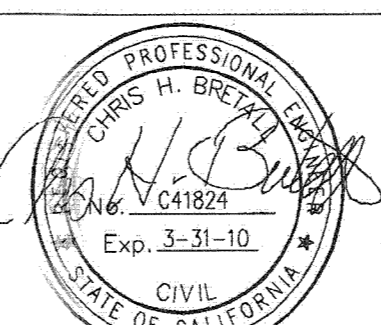
- 2 CONTRACTOR TO VERIFY EXISTING SEWER ELEVATION PRIOR TO CONSTRUCTION
- 3 CONTRACTOR TO ADJUST SEWER MANHOLES TO FINAL GRADE AFTER PAVING IS COMPLETED
- 4 ABANDON SANITARY SEWER FACILITIES & SLURRY FILL PER SPECIFICATIONS
- 5 CONSTRUCT 8" EXTRA STRENGTH VITRIFIED CLAY PIPE (VCP) SEWER, TYPE "G" JOINTS

GENERAL NOTES

- 1. CONSTRUCTION SHALL BE IN ACCORDANCE WITH THE CITY OF RIVERSIDE PUBLIC WORKS STANDARD DRAWINGS AND STANDARD SPECIFICATIONS FOR PUBLIC WORKS CONSTRUCTION (SSPWC) 2006 EDITION.
- 2. CONTRACTOR TO CALL UNDERGROUND SERVICE ALERT (USA) (800) 422-4133, TWO WORKING DAYS PRIOR TO DIGGING.
- 3. PRIOR TO ISSUANCE OF GRADE SHEETS FOR ANY PROPOSED SEWER AND STORM DRAIN FACILITIES CONTRACTOR SHALL EXPOSE ALL UTILITIES WHICH CROSS OR MAY BE IN CONFLICT WITH THE PROPOSED SEWER AND STORM DRAIN FACILITIES AND COORDINATE WITH THE INSPECTOR TO HAVE THE LOCATION AND ELEVATION VERIFIED BY CONTRACTOR'S SURVEYORS.
- 4. FOR SEWER PIPE WITHIN ZONE "B" PER CITY OF RIVERSIDE PUBLIC UTILITIES STANDARD DRAWING No. CWD-015-2, JOINT TYPE "G" PER THE SSPWC SHALL BE USED.



DMJM HARRIS | AECOM
 800 NORTH HAVEN, SUITE 410
 ONTARIO, CA 91764
 T (909)291-8150 F (909)291-8166



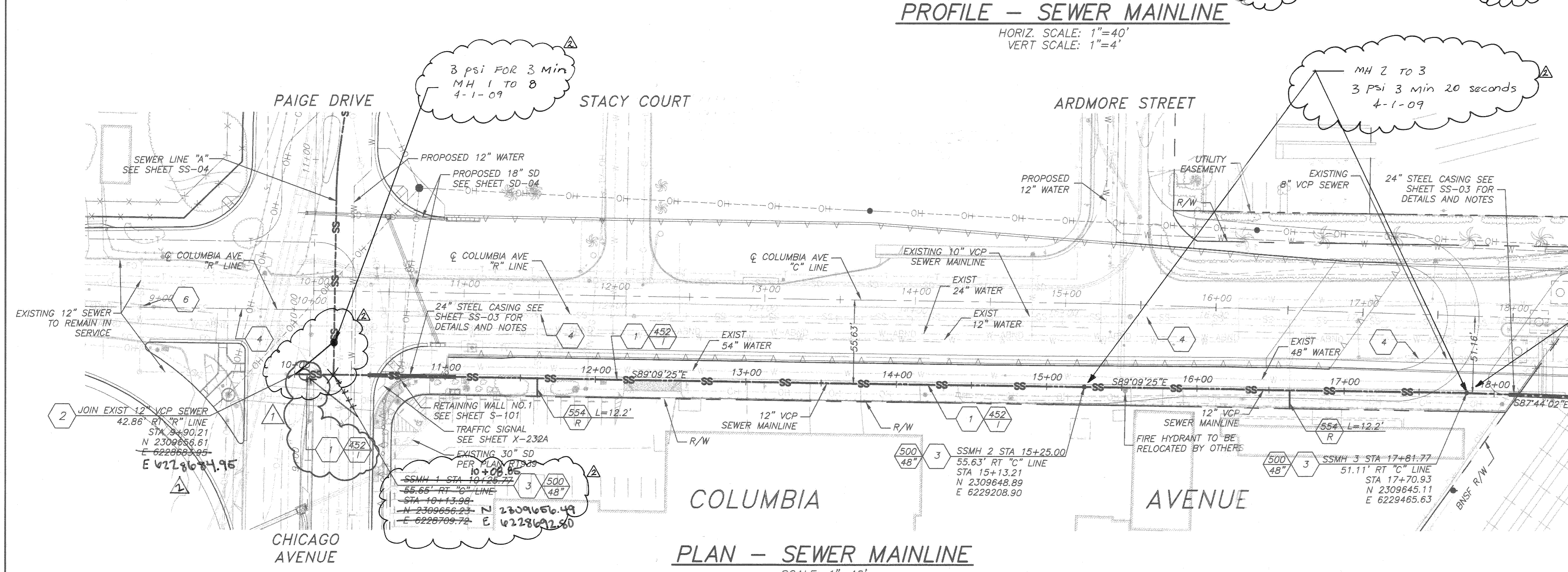
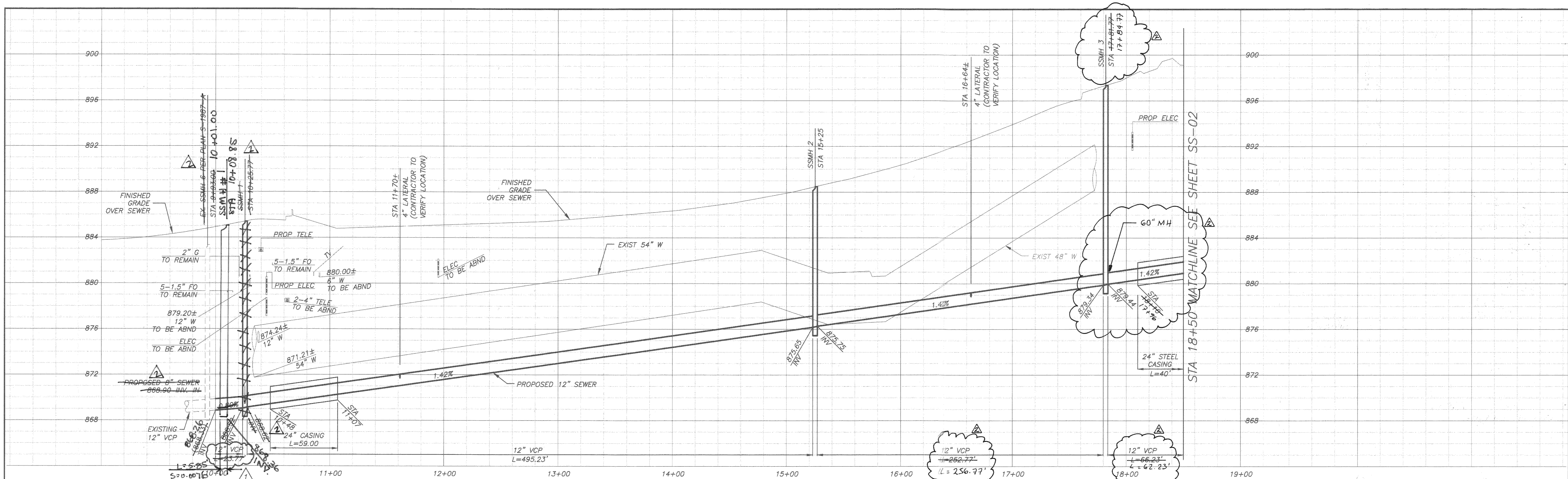
MARK	REVISIONS	APPR	DATE
	REALIGN SEWER LINE 'A' MULT TO MH 2		

COLUMBIA AVENUE OVERPASS AT BNSF RAILROAD

PLAN AND PROFILE
 SANITARY SEWER RELOCATION SHT 4
 SCALE: 1" = 40'

ACCT. NO. -
S-2032
SS-04
 SHEET 41 OF 103

FILE INFO: P:\60004231 Columbia Ave Overpass at BNSF Railroad\SS-04.dwg PLOTTED: Jul 15, 2008 3:00pm BY: khaas PLOT SCALE: 1"=1'
 XREFS: 604; 605; 606; 607; 608; 609; 610; 611; 612; 613; 614; 615; 616; 617; 618; 619; 620; 621; 622; 623; 624; 625; 626; 627; 628; 629; 630; 631; 632; 633; 634; 635; 636; 637; 638; 639; 640; 641; 642; 643; 644; 645; 646; 647; 648; 649; 650; 651; 652; 653; 654; 655; 656; 657; 658; 659; 660; 661; 662; 663; 664; 665; 666; 667; 668; 669; 670; 671; 672; 673; 674; 675; 676; 677; 678; 679; 680; 681; 682; 683; 684; 685; 686; 687; 688; 689; 690; 691; 692; 693; 694; 695; 696; 697; 698; 699; 700; 701; 702; 703; 704; 705; 706; 707; 708; 709; 710; 711; 712; 713; 714; 715; 716; 717; 718; 719; 720; 721; 722; 723; 724; 725; 726; 727; 728; 729; 730; 731; 732; 733; 734; 735; 736; 737; 738; 739; 740; 741; 742; 743; 744; 745; 746; 747; 748; 749; 750; 751; 752; 753; 754; 755; 756; 757; 758; 759; 760; 761; 762; 763; 764; 765; 766; 767; 768; 769; 770; 771; 772; 773; 774; 775; 776; 777; 778; 779; 780; 781; 782; 783; 784; 785; 786; 787; 788; 789; 790; 791; 792; 793; 794; 795; 796; 797; 798; 799; 800; 801; 802; 803; 804; 805; 806; 807; 808; 809; 810; 811; 812; 813; 814; 815; 816; 817; 818; 819; 820; 821; 822; 823; 824; 825; 826; 827; 828; 829; 830; 831; 832; 833; 834; 835; 836; 837; 838; 839; 840; 841; 842; 843; 844; 845; 846; 847; 848; 849; 850; 851; 852; 853; 854; 855; 856; 857; 858; 859; 860; 861; 862; 863; 864; 865; 866; 867; 868; 869; 870; 871; 872; 873; 874; 875; 876; 877; 878; 879; 880; 881; 882; 883; 884; 885; 886; 887; 888; 889; 890; 891; 892; 893; 894; 895; 896; 897; 898; 899; 900; 901; 902; 903; 904; 905; 906; 907; 908; 909; 910; 911; 912; 913; 914; 915; 916; 917; 918; 919; 920; 921; 922; 923; 924; 925; 926; 927; 928; 929; 930; 931; 932; 933; 934; 935; 936; 937; 938; 939; 940; 941; 942; 943; 944; 945; 946; 947; 948; 949; 950; 951; 952; 953; 954; 955; 956; 957; 958; 959; 960; 961; 962; 963; 964; 965; 966; 967; 968; 969; 970; 971; 972; 973; 974; 975; 976; 977; 978; 979; 980; 981; 982; 983; 984; 985; 986; 987; 988; 989; 990; 991; 992; 993; 994; 995; 996; 997; 998; 999; 1000

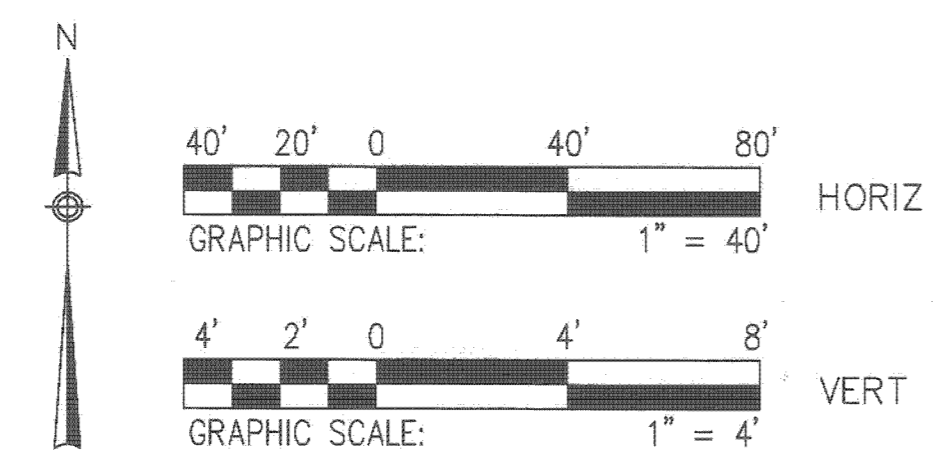
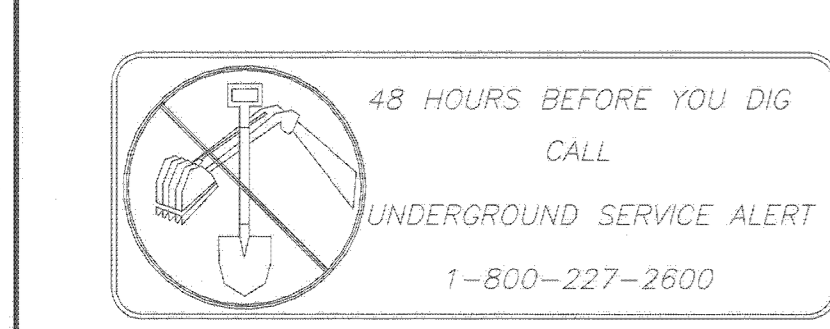


- CONSTRUCTION NOTES**
1. CONSTRUCT 12" EXTRA STRENGTH VITRIFIED CLAY PIPE (VCP) SEWER, TYPE "G" JOINTS
 2. CONTRACTOR TO VERIFY EXISTING SEWER ELEVATION PRIOR TO CONSTRUCTION
 3. CONTRACTOR TO ADJUST SEWER MANHOLES TO FINAL GRADE AFTER PAVING IS COMPLETED
 4. ABANDON SANITARY SEWER FACILITIES & SLURRY FILL PER SPECIFICATIONS
 6. PLUG 10" INLET FROM EAST IN EXISTING MH

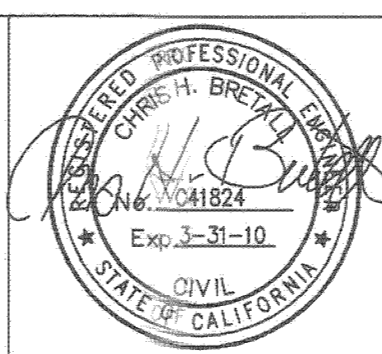
MH 2 TO 3
 3 psi FOR 3 min
 4-1-09

MH 3 TO 4
 3 psi 3 min 20 sec.
 4-2-09

- GENERAL NOTES**
1. CONSTRUCTION SHALL BE IN ACCORDANCE WITH THE CITY OF RIVERSIDE PUBLIC WORKS STANDARD DRAWINGS AND STANDARD SPECIFICATIONS FOR PUBLIC WORKS CONSTRUCTION (SSPWC) 2006 EDITION.
 2. CONTRACTOR TO CALL UNDERGROUND SERVICE ALERT (USA) (800) 422-4133, TWO WORKING DAYS PRIOR TO DIGGING.
 3. PRIOR TO ISSUANCE OF GRADE SHEETS FOR ANY PROPOSED SEWER AND STORM DRAIN FACILITIES CONTRACTOR SHALL EXPOSE ALL UTILITIES WHICH CROSS OR MAY BE IN CONFLICT WITH THE PROPOSED SEWER AND STORM DRAIN FACILITIES AND COORDINATE WITH THE INSPECTOR TO HAVE THE LOCATION AND ELEVATION VERIFIED BY CONTRACTOR'S SURVEYORS.
 4. FOR SEWER PIPE WITHIN ZONE "B" PER CITY OF RIVERSIDE PUBLIC UTILITIES STANDARD DRAWING No. CWD-015-2, JOINT TYPE "G" PER THE SSPWC SHALL BE USED.



DMJM HARRIS | AECOM
 800 NORTH HAVEN, SUITE 410
 ONTARIO, CA 91764
 T (909)291-8150 F (909)291-8166



AS BUILT	F.R. 9/14/10
ADDED CONSTRUCTION NOTE	C.B. 6-18-09
DESIGNED BY: AT	DRAWN BY: AT
CHECKED BY: C.B.	DATE:

COLUMBIA AVENUE OVERPASS AT BNSF RAILROAD		ACCT. NO. -
PLAN AND PROFILE SANITARY SEWER RELOCATION SHT 1		S-2032 SS-01
SCALE: 1" = 40'		SHEET 38 OF 103

Indexed-2/1/12 SE

