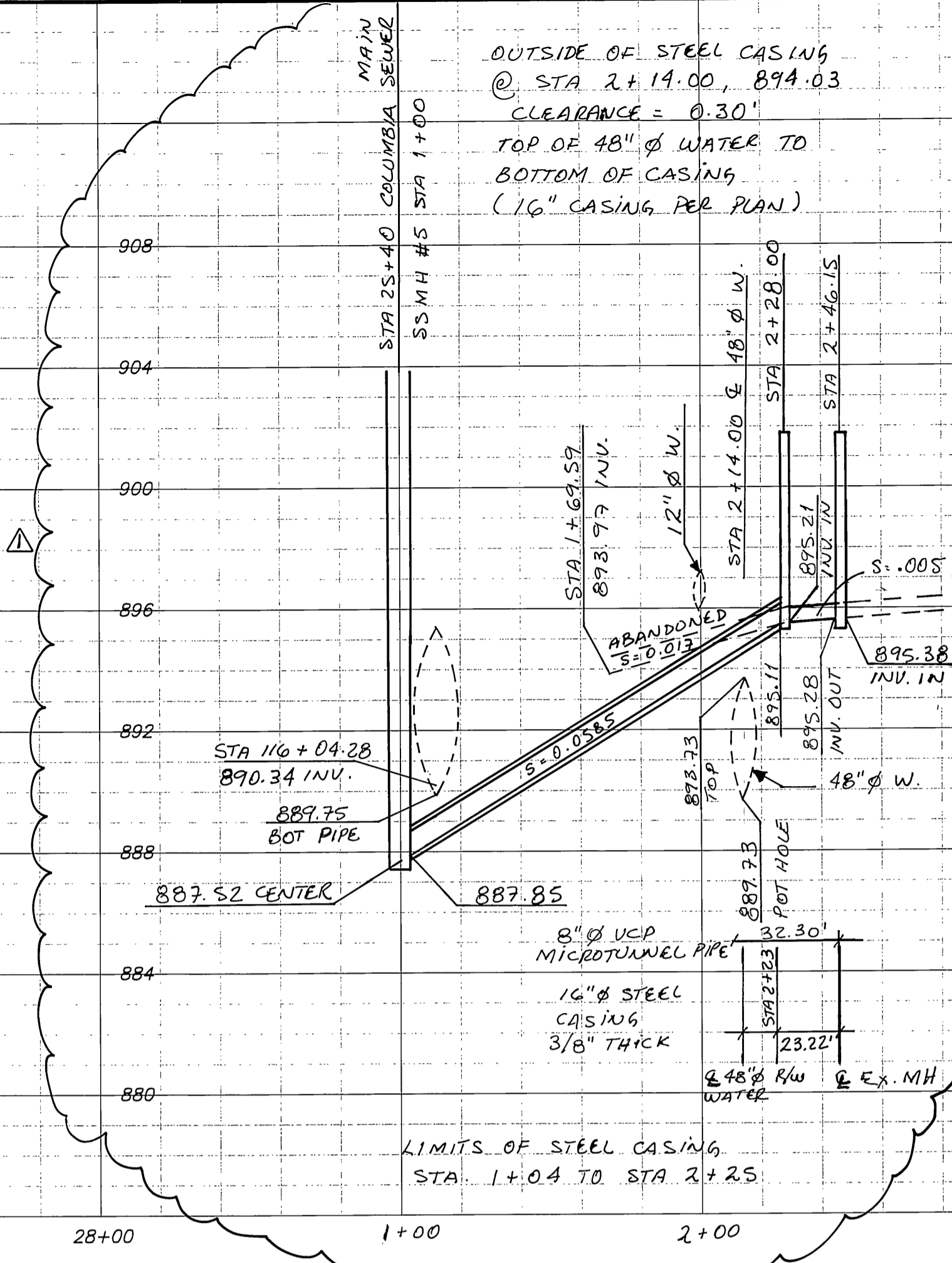
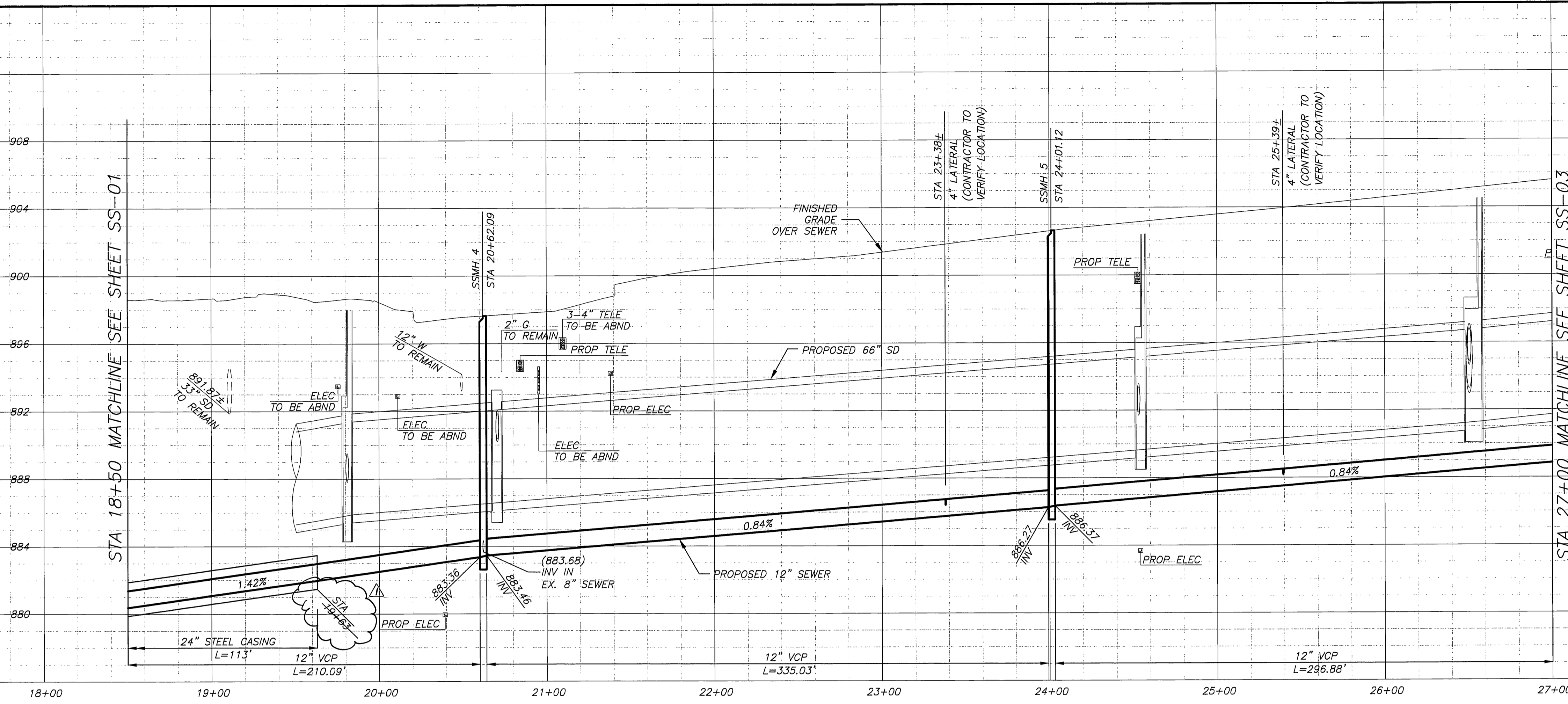


FILE: W:\P\06000232 Columbia Grade Sanitary Sewer\Sheet\SS-02.dwg
 DATE: 9/14/10, 10:58 AM, USER: JHARRIS, PLOT: 9/14/10, 10:58 AM, PLOTTER: HP DesignJet 500, PLOTTING: 11x17, PLOT SCALE: 1"=40'
 FILE: W:\P\06000232 Columbia Grade Sanitary Sewer\Sheet\SS-02.dwg
 DATE: 9/14/10, 10:58 AM, USER: JHARRIS, PLOT: 9/14/10, 10:58 AM, PLOTTER: HP DesignJet 500, PLOTTING: 11x17, PLOT SCALE: 1"=40'



PROFILE - SEWER MAINLINE
 HORIZ. SCALE: 1"=40'
 VERT. SCALE: 1"=4'

CURVE DATA				
CURVE	R	Δ	L	T
1	200.00'	03°41'58"	12.91'	6.46'
2	200.00'	05°07'53"	17.91'	8.96'

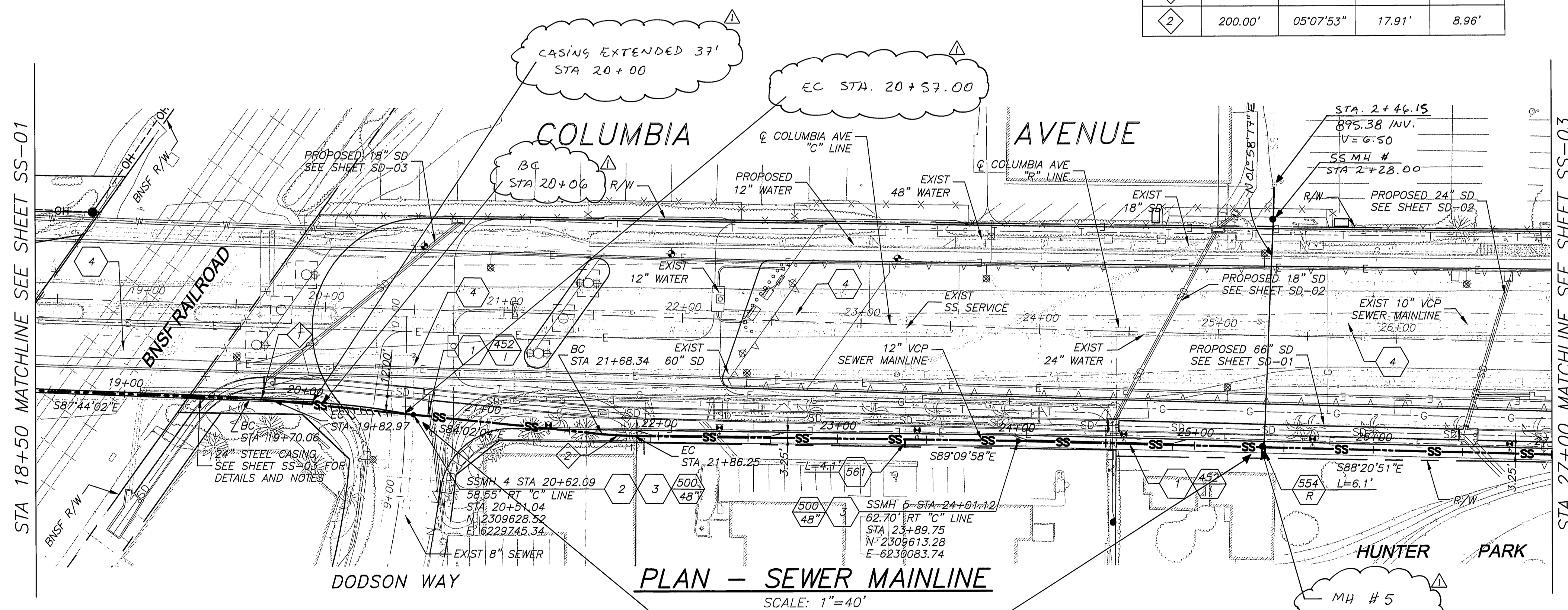
CONSTRUCTION NOTES

1. CONSTRUCT 12" EXTRA STRENGTH VITRIFIED CLAY PIPE (VCP) SEWER, TYPE "G" JOINTS
2. CONTRACTOR TO VERIFY EXISTING SEWER ELEVATION PRIOR TO CONSTRUCTION
3. CONTRACTOR TO ADJUST SEWER MANHOLES TO FINAL GRADE AFTER PAVING IS COMPLETED
4. ABANDON SANITARY SEWER FACILITIES & SLURRY FILL PER SPECIFICATIONS

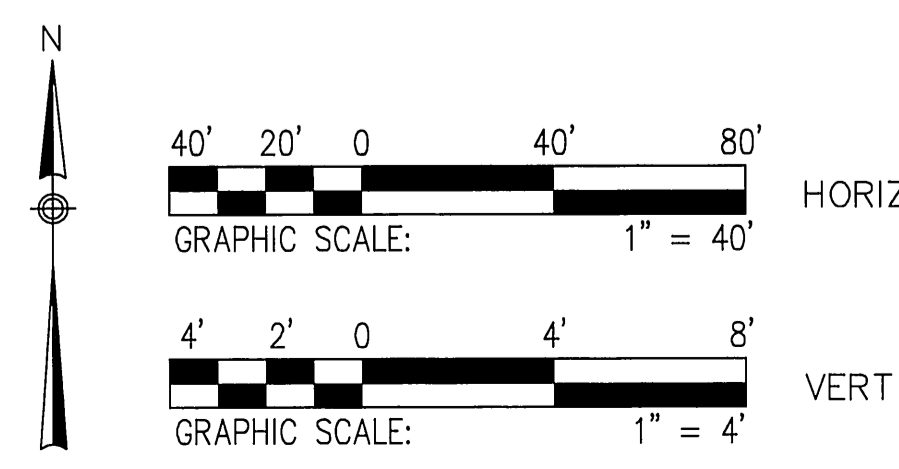
AS BUILT
 DATE 9-14-10

GENERAL NOTES

1. CONSTRUCTION SHALL BE IN ACCORDANCE WITH THE CITY OF RIVERSIDE PUBLIC WORKS STANDARD DRAWINGS AND STANDARD SPECIFICATIONS FOR PUBLIC WORKS CONSTRUCTION (SSPWC) 2006 EDITION.
2. CONTRACTOR TO CALL UNDERGROUND SERVICE ALERT (USA) (800) 422-4133, TWO WORKING DAYS PRIOR TO DIGGING.
3. PRIOR TO ISSUANCE OF GRADE SHEETS FOR ANY PROPOSED SEWER AND STORM DRAIN FACILITIES CONTRACTOR SHALL EXPOSE ALL UTILITIES WHICH CROSS OR MAY BE IN CONFLICT WITH THE PROPOSED SEWER AND STORM DRAIN FACILITIES AND COORDINATE WITH THE INSPECTOR TO HAVE THE LOCATION AND ELEVATION VERIFIED BY CONTRACTOR'S SURVEYORS.
4. FOR SEWER PIPE WITHIN ZONE "B" PER CITY OF RIVERSIDE PUBLIC UTILITIES STANDARD DRAWING No. CWD-015-2, JOINT TYPE "G" PER THE SSPWC SHALL BE USED.

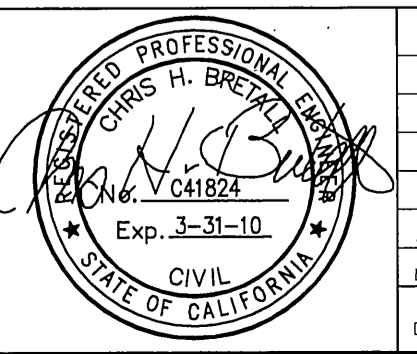


PLAN - SEWER MAINLINE
 SCALE: 1"=40'



MH 4 TO MH 5
 TEST 475' 5 Min
 3 psi NO DROP
 4-9-09

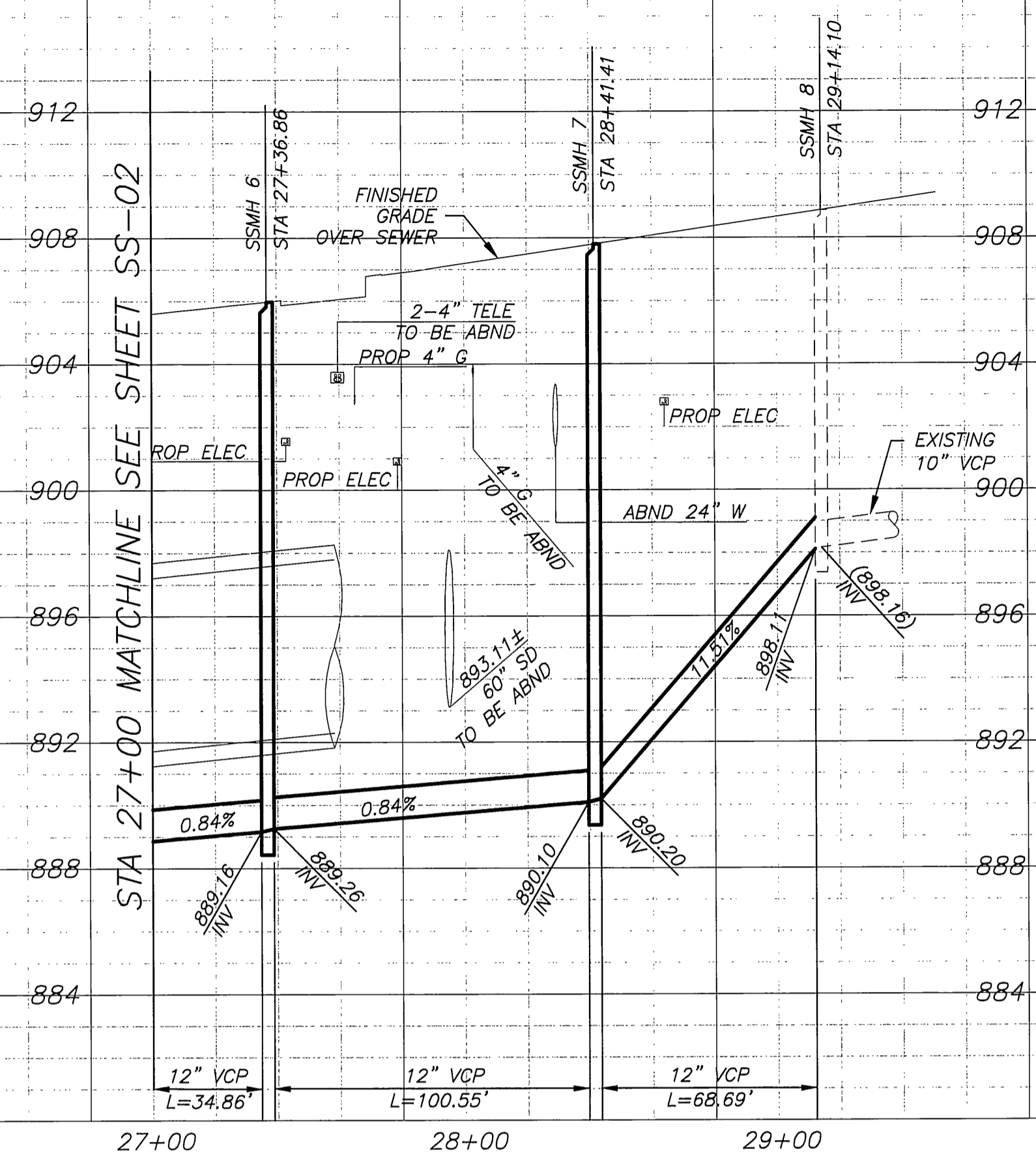
DMJM HARRIS | AECOM
 800 NORTH HAVEN, SUITE 410
 ONTARIO, CA 91764
 T (909)291-8150 F (909)291-8166



MARK	AS BUILT	DATE	F.R. 9/14/10
DESIGNED BY	AT	DRAWN BY	AT
CHECKED BY	CB		

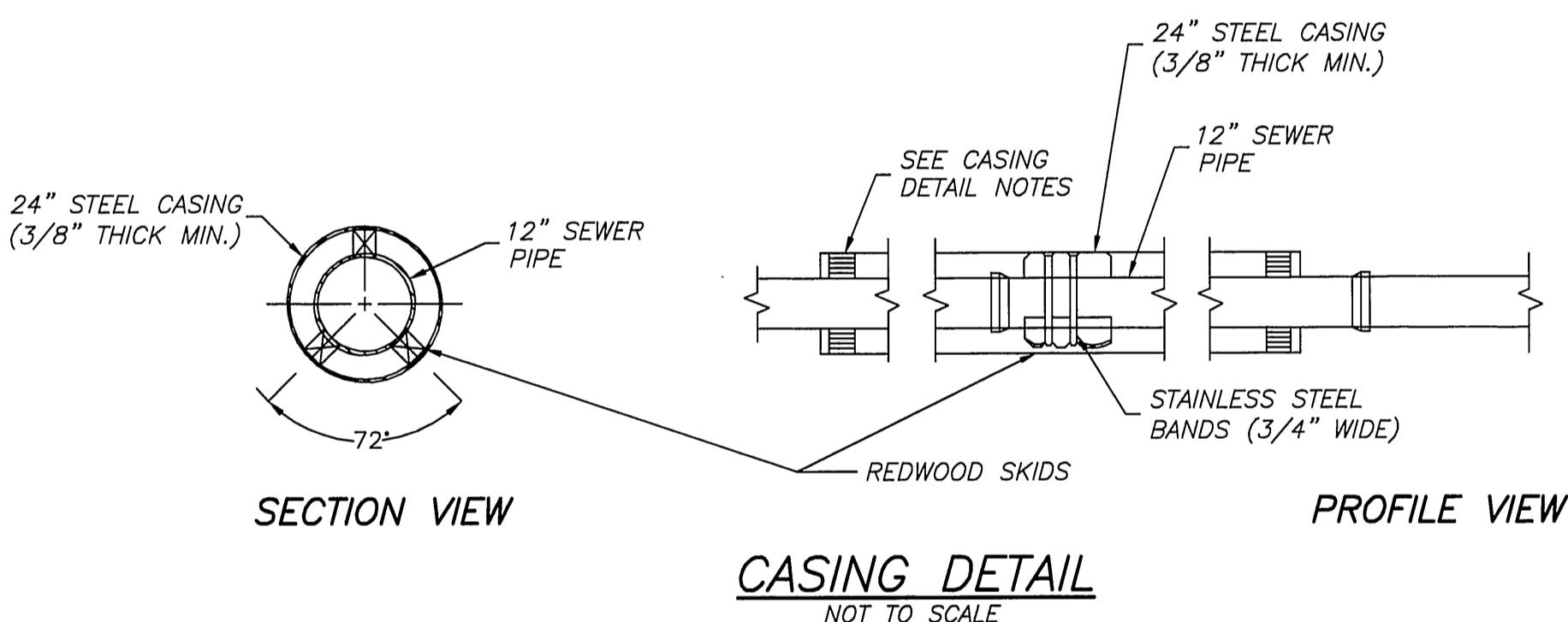
COLUMBIA AVENUE OVERPASS AT BNSF RAILROAD
PLAN AND PROFILE
SANITARY SEWER RELOCATION SHT 2
 SCALE: 1" = 40'

ACCT. NO. -
S-2032
SS-02
 SHEET 39 OF 103



PROFILE - SEWER MAINLINE

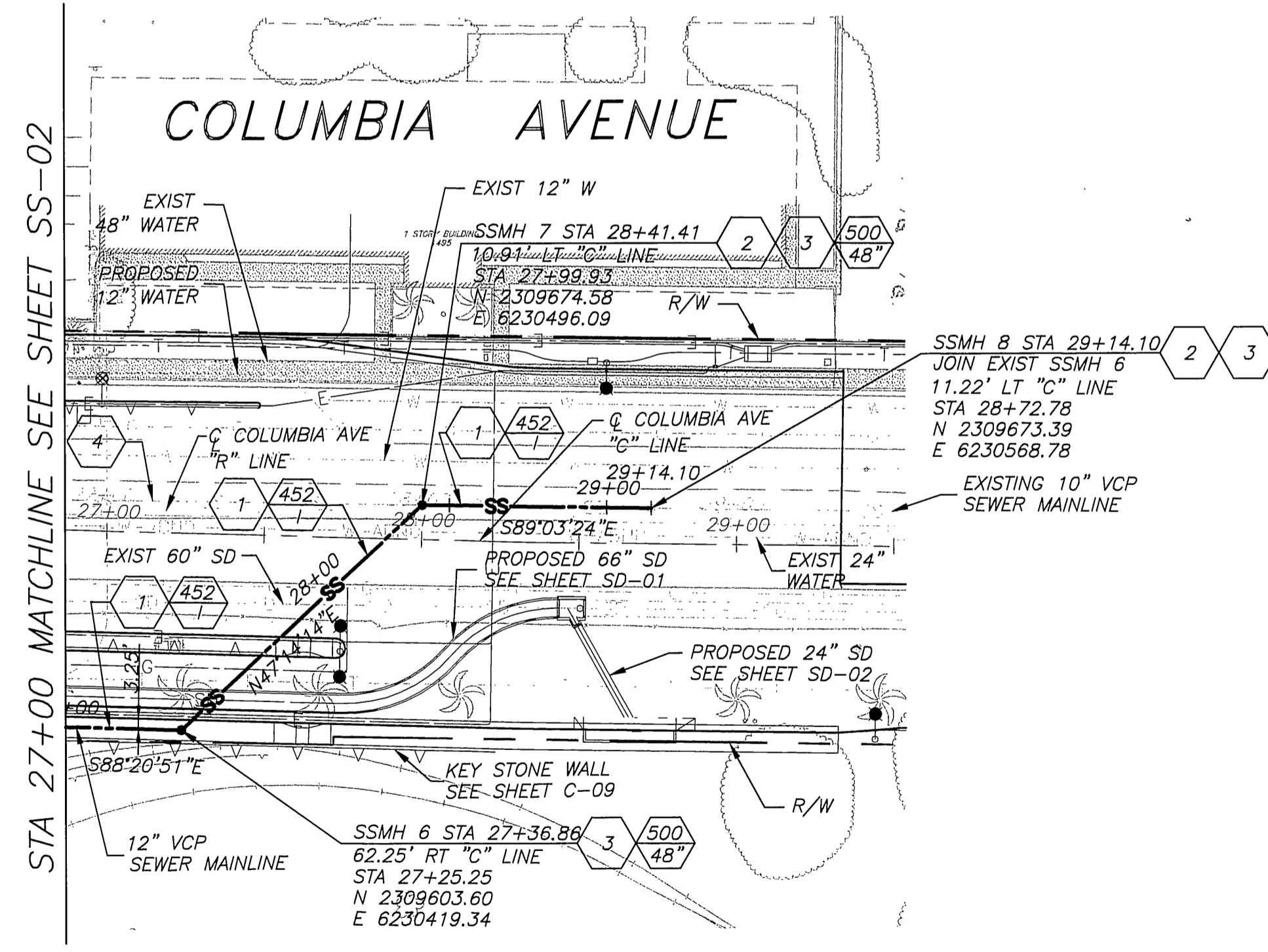
HORIZ SCALE: 1"=40'
VERT SCALE: 1"=4'



CASING DETAIL
NOT TO SCALE

CASING DETAIL NOTES

1. SKIDS SHALL BE REDWOOD, 30" LONG, 4" WIDE, AND OF SUFFICIENT HEIGHT TO PROVIDE A MINIMUM 2" CLEARANCE BETWEEN INVERT OF CASING AND BELL OF VCP. ALL SKIDS SHALL BE OF EQUAL DIMENSIONS AND POSITIONED UNIFORMLY.
2. ALL STEEL CASING PIPE FIELD JOINTS SHALL BE WELDED WITH A CONTINUOUS CIRCUMFERENTIAL WELDS.
3. CARRIER PIPE SHALL BE AIR TESTED PRIOR TO SLURRY BACKFILLING AND SEALING CASING.
4. VOID BETWEEN CASING AND CARRIER PIPE SHALL BE FILLED WITH A ONE SACK PCC SLURRY MIX.
5. UPSTREAM AND DOWNSTREAM ELEVATIONS TO BE VERIFIED PRIOR TO SEALING CASING.
6. ENDS OF CASING TO BE SEALED WITH BRICK AND MORTAR. PLACE 1" DIA MINIMUM PVC PIPE AT INVERT OF CASING (THROUGH BRICK) AND SURROUND WITH 2 CUBIC FEET OF CRUSHED ROCK.



PLAN - SEWER MAINLINE

SCALE: 1"=40'

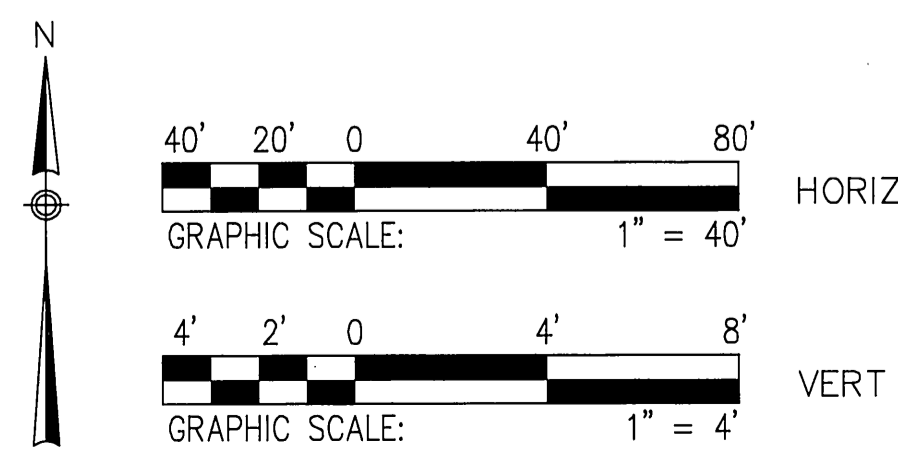
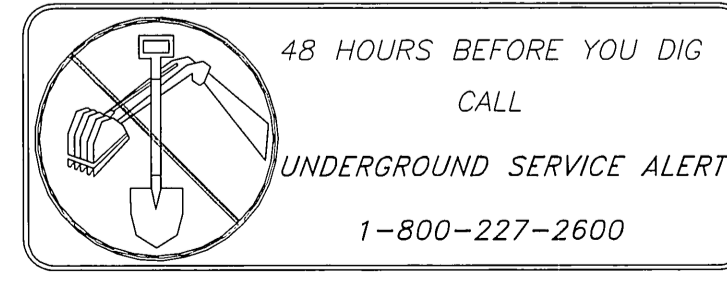
CONSTRUCTION NOTES

1. CONSTRUCT 12" EXTRA STRENGTH VITRIFIED CLAY PIPE (VCP) SEWER, TYPE "G" JOINTS
2. CONTRACTOR TO VERIFY EXISTING SEWER ELEVATION PRIOR TO CONSTRUCTION
3. CONTRACTOR TO ADJUST SEWER MANHOLES TO FINAL GRADE AFTER PAVING IS COMPLETED
4. ABANDON SANITARY SEWER FACILITIES & SLURRY FILL PER SPECIFICATIONS

GENERAL NOTES

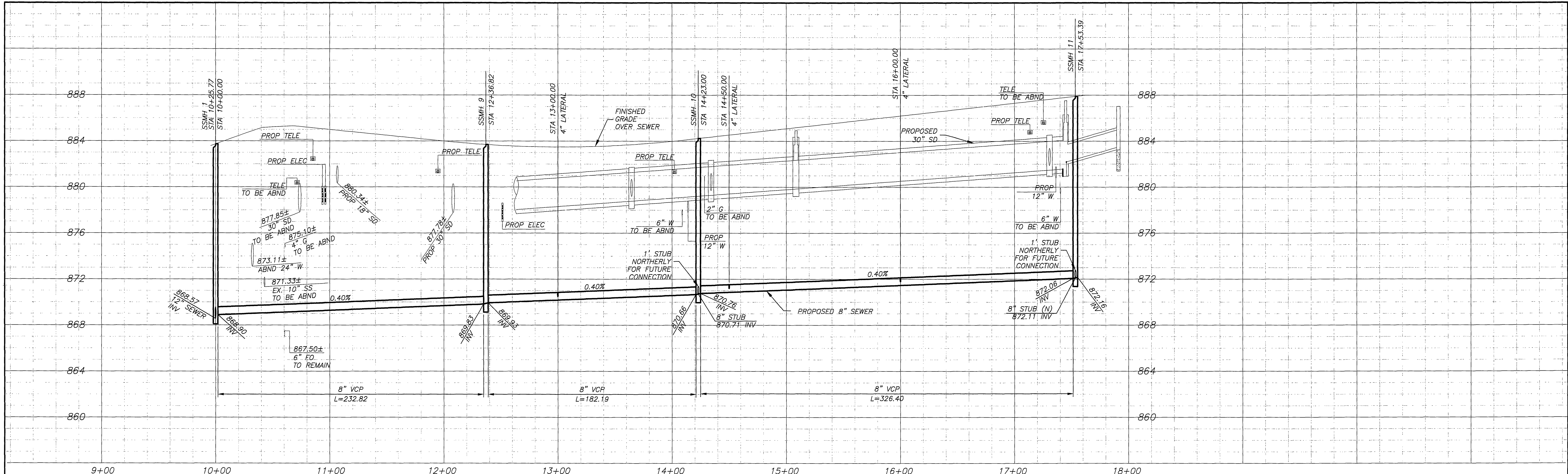
1. CONSTRUCTION SHALL BE IN ACCORDANCE WITH THE CITY OF RIVERSIDE PUBLIC WORKS STANDARD DRAWINGS AND STANDARD SPECIFICATIONS FOR PUBLIC WORKS CONSTRUCTION (SSPWC) 2006 EDITION.
2. CONTRACTOR TO CALL UNDERGROUND SERVICE ALERT (USA) (800) 422-4133, TWO WORKING DAYS PRIOR TO DIGGING.
3. PRIOR TO ISSUANCE OF GRADE SHEETS FOR ANY PROPOSED SEWER AND STORM DRAIN FACILITIES CONTRACTOR SHALL EXPOSE ALL UTILITIES WHICH CROSS OR MAY BE IN CONFLICT WITH THE PROPOSED SEWER AND STORM DRAIN FACILITIES AND COORDINATE WITH THE INSPECTOR TO HAVE THE LOCATION AND ELEVATION VERIFIED BY CONTRACTOR'S SURVEYORS.
4. FOR SEWER PIPE WITHIN ZONE "B" PER CITY OF RIVERSIDE PUBLIC UTILITIES STANDARD DRAWING No. CWD-015-2, JOINT TYPE "G" PER THE SSPWC SHALL BE USED.

FILE: I:\P02\2008\203 Columbia Code San CAD\DWG\Civil\Sheet\SS-03.dwg PLOTTED: Sep 29, 2008, 1:09pm BY: emperore PLOT SCALE: 1"=1' XREFS: sbr: xlogo; aut_exc; aut_line; aut_canol; srew; aut_line; aut_canol; srew; aut_line; aut_canol; srew; aut_line; aut_canol; srew



AS BUILT
DATE 9-14-10

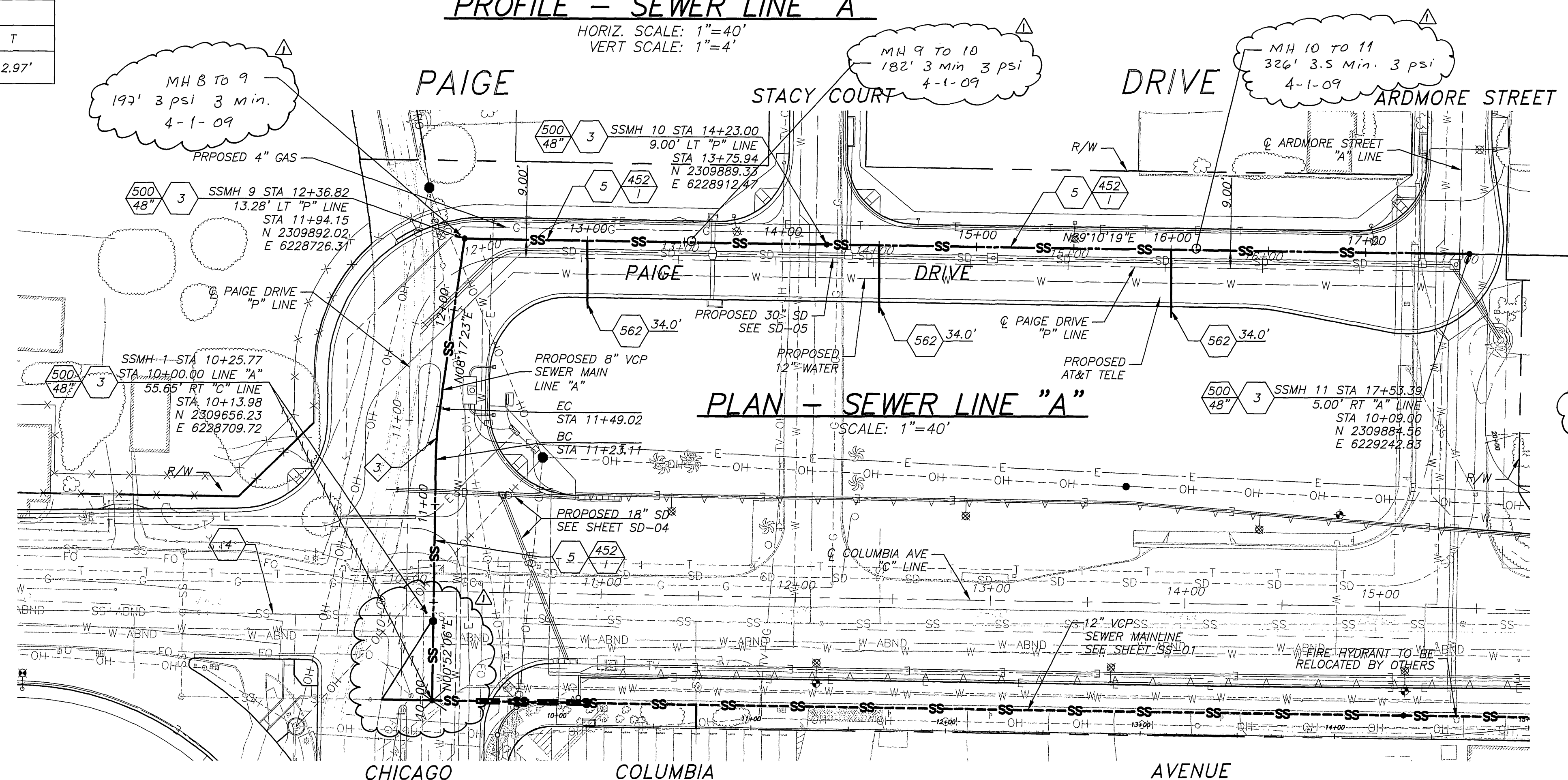
DMJM HARRIS AECOM 800 NORTH HAVEN, SUITE 410 ONTARIO, CA 91764 T (909)291-8150 F (909)291-8166		COLUMBIA AVENUE OVERPASS AT BNSF RAILROAD ACCT. NO. -	
		PLAN AND PROFILE SANITARY SEWER RELOCATION SHT 3 SCALE: 1" = 40'	
DESIGNED BY AT DRAWN BY AT CHECKED BY CB		S-2032 SS-03 SHEET 40 OF 103	



PROFILE - SEWER LINE "A"

HORIZ. SCALE: 1"=40'
VERT. SCALE: 1"=4'

CURVE DATA				
CURVE	R	Δ	L	T
3	200.00'	07°25'17"	25.91'	12.97'



PLAN - SEWER LINE "A"

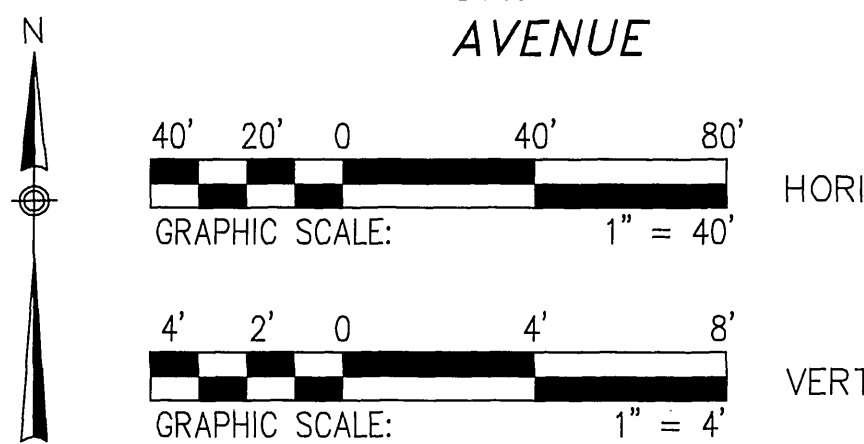
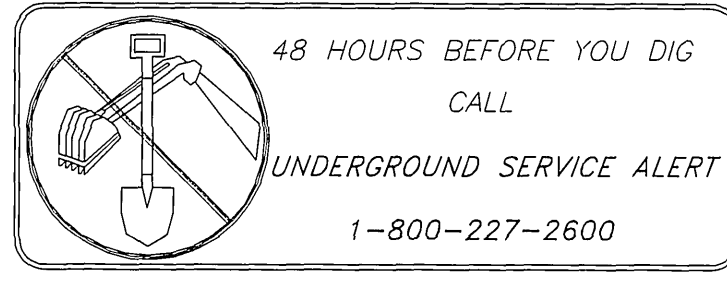
SCALE: 1"=40'

CONSTRUCTION NOTES

- 2 CONTRACTOR TO VERIFY EXISTING SEWER ELEVATION PRIOR TO CONSTRUCTION
- 3 CONTRACTOR TO ADJUST SEWER MANHOLES TO FINAL GRADE AFTER PAVING IS COMPLETED
- 4 ABANDON SANITARY SEWER FACILITIES & SLURRY FILL PER SPECIFICATIONS
- 5 CONSTRUCT 8" EXTRA STRENGTH VITRIFIED CLAY PIPE (VCP) SEWER, TYPE "G" JOINTS

GENERAL NOTES

- 1. CONSTRUCTION SHALL BE IN ACCORDANCE WITH THE CITY OF RIVERSIDE PUBLIC WORKS STANDARD DRAWINGS AND STANDARD SPECIFICATIONS FOR PUBLIC WORKS CONSTRUCTION (SSPWC) 2006 EDITION.
- 2. CONTRACTOR TO CALL UNDERGROUND SERVICE ALERT (USA) (800) 422-4133, TWO WORKING DAYS PRIOR TO DIGGING.
- 3. PRIOR TO ISSUANCE OF GRADE SHEETS FOR ANY PROPOSED SEWER AND STORM DRAIN FACILITIES, CONTRACTOR SHALL EXPOSE ALL UTILITIES WHICH CROSS OR MAY BE IN CONFLICT WITH THE PROPOSED SEWER AND STORM DRAIN FACILITIES AND COORDINATE WITH THE INSPECTOR TO HAVE THE LOCATION AND ELEVATION VERIFIED BY CONTRACTOR'S SURVEYORS.
- 4. FOR SEWER PIPE WITHIN ZONE "B" PER CITY OF RIVERSIDE PUBLIC UTILITIES STANDARD DRAWING No. CWD-015-2, JOINT TYPE "G" PER THE SSPWC SHALL BE USED.



AS BUILT
DATE 9-14-10

DMJM HARRIS | AECOM
800 NORTH HAVEN, SUITE 410
ONTARIO, CA 91764
T (909)291-8150 F (909)291-8166



MARK	AS BUILT	DESIGNED BY	AT	DRAWN BY	AT	CHECKED BY	C.B.
REVISIONS		DATE					

COLUMBIA AVENUE OVERPASS AT BNSF RAILROAD
PLAN AND PROFILE
SANITARY SEWER RELOCATION SHT 4
SCALE: 1" = 40'

ACCT. NO. -
S-2032
SS-04
SHEET 41 OF 103

FILE INFO: P:\6009423 Columbia Grade Ssp\CADD\Civil\Sheet\SS-04.dwg PLOTTED: Sep 29, 2008 1:10pm BY: empires PLOT SCALE: 1:1 XREFS: sbr; xtop; uat;_ex; uat;_pr; e-concl; row;_ssw; xid-colu; xid-prof; MODIFIED: Sep 19, 2008 2:55pm