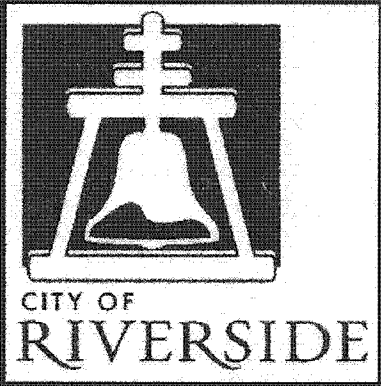


RIVERSIDE CALIFORNIA



PUBLIC WORKS DEPARTMENT MISSION INN AVENUE SEWER MAIN REPLACEMENT BETWEEN FAIRMOUNT BOULEVARD AND SANTA FE AVENUE

GENERAL CONSTRUCTION NOTES:

- EXISTING UTILITIES SHOWN ON THE PLAN, ARE PLOTTED FROM UTILITY RECORDS. THE CONTRACTOR IS REQUIRED TO TAKE DUE PRECAUTIONARY MEASURES TO LOCATE AND PROTECT ALL UTILITIES WHETHER OR NOT SHOWN ON THIS PLAN.
- PRIME CONTRACTORS BIDDING THIS WORK SHALL HAVE A CLASS "A", "C-34", OR A "C-42" LICENSE.
- ALL ELEVATIONS SHOWN ON THE PLANS SHALL BE STAKED IN THE FIELD.
- ANY WORK THAT WILL CAUSE DAMAGE TO THE DETECTOR LOOPS SHALL NOT BE PERFORMED UNTIL TRAFFIC SIGNAL MAINTENANCE PERSONNEL HAVE BEEN NOTIFIED AND THE NECESSARY TIMING ADJUSTMENTS ARE MADE TO MAINTAIN SIGNAL OPERATION.
- CONSTRUCTION SHALL BE IN ACCORDANCE WITH THE CITY OF RIVERSIDE STANDARD DRAWINGS AND STANDARD SPECIFICATIONS FOR PUBLIC WORKS CONSTRUCTION, 2006 EDITION.
- TRENCHES SHALL BE EITHER BACKFILLED AND COMPACTED PER STD. DWG. 453 OR COVERED WITH TRAFFIC RATED STEEL PLATES AT THE END OF EACH WORK DAY.
- WATER VALVES ENCOUNTERED DURING PIPELINE CONSTRUCTION OR DURING RESTORATION OF SURFACE IMPROVEMENTS SHALL BE PROTECTED IN PLACE, RESTORED TO PRECONSTRUCTION CONDITION AND/OR ADJUSTED TO GRADE BY THE CONTRACTOR.
- PIPE BEDDING SHALL BE PER STD. DWG. 452 AND SHALL BE CASE 1 UNLESS SPECIFIED OTHERWISE ON THE PLANS.
- CONTRACTOR SHALL REPLACE ALL TRAFFIC DETECTOR LOOPS AFFECTED BY CONSTRUCTION.
- CONTRACTOR SHALL RELOCATE ALL TRAFFIC SIGNS REMOVED DUE TO CONSTRUCTION, PER CITY STANDARDS.
- VCP PIPE JOINTS SHALL BE TYPE "G" PER SECTION 208-2.3 OF THE APWA "GREEN BOOK" STANDARD, SPECIFICATIONS FOR PUBLIC WORKS CONSTRUCTION, 2006 EDITION.
- DRIVEWAY AND PEDESTRIAN ACCESS MUST BE MAINTAINED DURING NON-CONSTRUCTION HOURS.

CONSTRUCTION LEGEND:

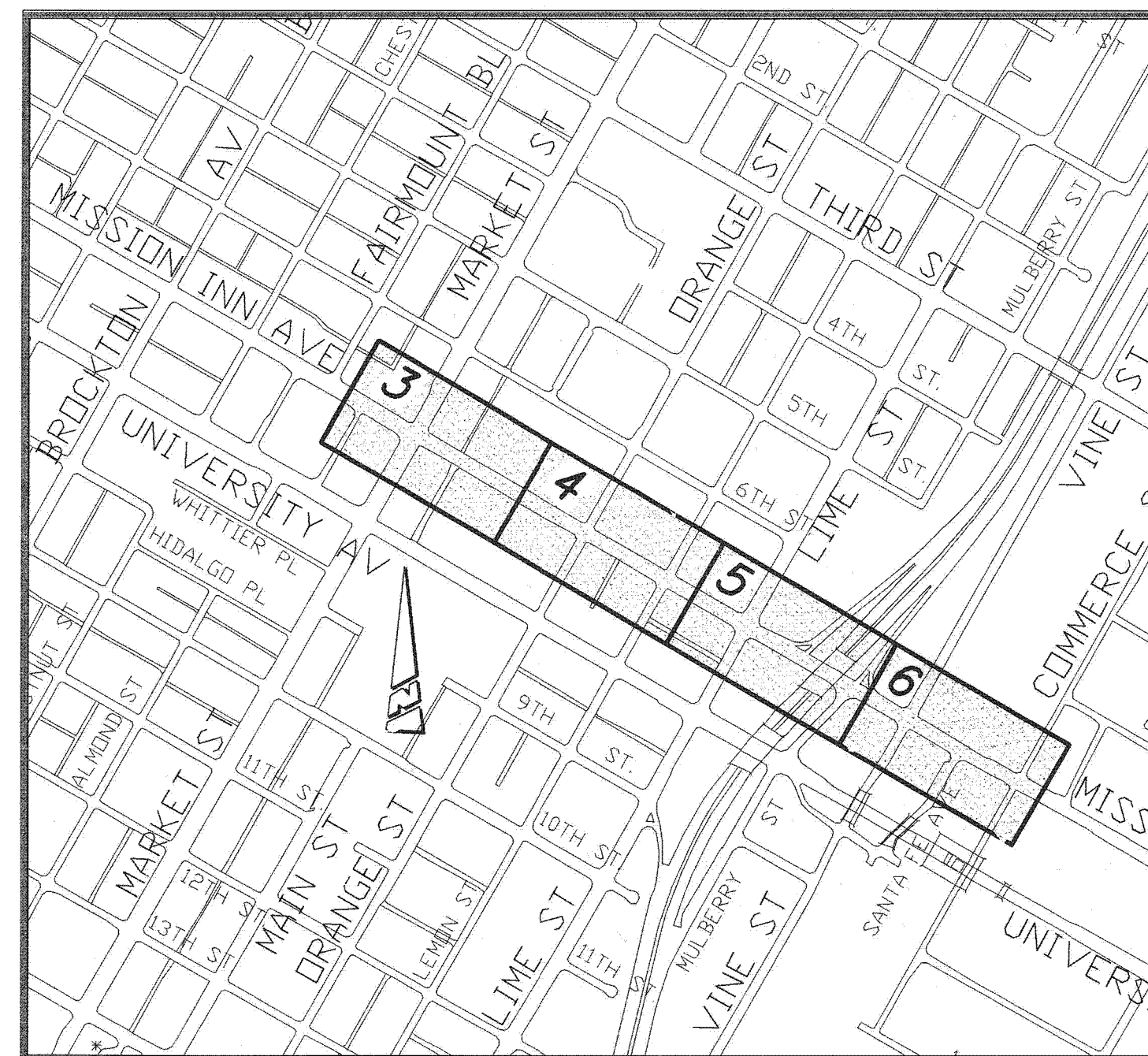
- NUMBERS ABOVE 100 IN A HEXAGON ON THE PLAN REFER TO THE RESPECTIVE STANDARD DRAWING AND SHALL BE CONSTRUCTED ACCORDINGLY. UNLESS MODIFICATIONS ARE NOTED ON THE PLAN, ANY NUMBER SHOWN BELOW THE STANDARD DRAWING NUMBER INDICATES THE SPECIFIC ALTERNATE TO BE CONSTRUCTED.
- 48" MANHOLE PER STANDARD DRAWING 500.

EXISTING UNDERGROUND UTILITIES:

SANITARY SEWER	8" S	TELEPHONE CONDUIT	T
WATER LINE	6" W	ELECTRICAL CONDUIT	E
STORM DRAIN	24" SD	ELECTROLIER LIGHTING CONDUIT	ELC
GAS LINE	3" G	TRAFFIC SIGNAL	SIG
ABANDONED UTILITY	6" G (ABAND.)	FIRE ALARM	F

EXISTING TOPOGRAPHY:

BLOCK WALL	TOP OF SLOPE	PEDESTRIAN PUSH BUTTON
BOARD FENCE	TOE OF SLOPE	RAILROAD TRACKS
WIRE FENCE	DIRECTION OF FLOW	RAILROAD SIGN
CHAIN LINK FENCE		RAILROAD SIGNAL
SANITARY SEWER M.H.	POLE & GUY ANCHOR	TRAFFIC SIGNAL
SANITARY SEWER CLEANOUT	POWER POLE	TRAFFIC SIGNAL ON MAST ARM
STORM DRAIN M.H.	TELEPHONE POLE	TRAFFIC SIGNAL CONTROLLER
IRRIGATION WEIR	TELEPHONE RISER	TRAFFIC SIGNAL PRESSURE DETECTOR
WATER M.H.	JOINT USE POLE	TRAFFIC SIGNAL LOOP DETECTOR
GAS M.H.	PULL BOX	STREET LIGHT & TRAFFIC SIGNAL ON MAST ARM
ELECTRIC M.H.	TRAFFIC SIGN	STREET LIGHT (UPRIGHT)
TELEPHONE M.H.	PARKING METER	STREET LIGHT ON MAST ARM
WATER METER	FIRE ALARM BOX	STEEL POST
FIRE HYDRANT	STREET NAME SIGN	WOOD POST
SPRINKLER HEAD	GAS METER	
VALVE	MAIL BOX	
AIR VALVE	FAUCET	
AIR VENT	WALK-DON'T WALK / PEDESTRIAN SIGNAL	
BUS STOP SIGN	ELECTRICAL TEST STATION	
BLOW-OFF VALVE	WHEEL STOP	
IRRIGATION STAND PIPE	A.C. BERM	
CONCRETE		
ASPHALT		
BUILDING		
EDGE OF PAVEMENT		



PROJECT LOCATION MAP
N.T.S.

SPECIFIC CONSTRUCTION NOTES:

- RECONNECT LATERALS TO NEW SEWER PIPELINE PER STANDARD DRAWING 554 OR REPLACE EXISTING LATERAL PER STANDARD DRAWING 562 AND PER SPECIFICATIONS. CONTRACTOR TO FIELD VERIFY LATERAL LOCATION AND CONNECTION.
- PRIOR TO CONSTRUCTION CONTRACTOR TO FIELD VERIFY LOCATION OF EXISTING 84" RCP - 72" RCP AND PROTECT IN PLACE.
- PRIOR TO CONSTRUCTION CONTRACTOR TO FIELD VERIFY LOCATIONS OF ALL EXISTING UTILITIES AND PROTECT IN PLACE.
- CONTRACTOR TO REMOVE EXISTING CAPPED LATERALS WITHIN TRENCH LIMITS AND ABANDON REMAINING PORTION PER GREEN BOOK.
- CONTRACTOR TO FIELD VERIFY LOCATION OF TUNNEL AND PROTECT IN PLACE.
- BUILD MANHOLES TO PROPOSED FUTURE GRADE AND ADD GRADE RINGS TO ADJUST MANHOLE FRAME AND COVERS TO MEET EXISTING GRADE. WHERE THE EXISTING AND PROPOSED GRADE DIFFERS AS SHOWN ON THE PLANS.
- CONCRETE CROSSWALK - REMOVE AND REPAIR CONCRETE TO NEAREST SAWCUT LINE OUTSIDE OF DISTURBED TRENCH AREA.

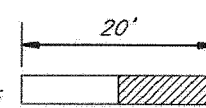
SHEET INDEX:

SHEET NO.	DESCRIPTION
1	TITLE SHEET
2	TYPICAL SECTIONS
3	SEWER MAIN - STA. 8+00 TO STA. 16+00
4	SEWER MAIN - STA. 16+00 TO STA. 24+00
5	SEWER MAIN - STA. 24+00 TO STA. 32+00
6	SEWER MAIN - STA. 32+00 TO STA. 37+13.89

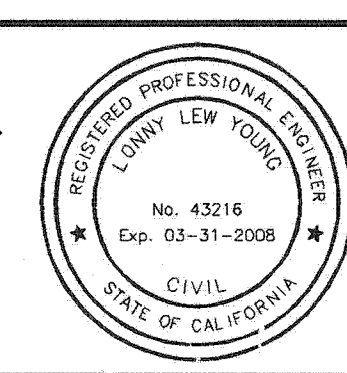
BENCHMARK
P.K. NAIL AND CITY ENGINEER TAG IN THE BACK OF A CATCH BASIN ALONG THE WLY CURB OF ORANGE ST. AT THE SWLY CORNER OF ORANGE ST. & THIRD ST.
ELEVATION 852.637'

IMPORTANT NOTICE
Section 4716/4817 of the Government Code requires a City Agent Identification Number to be stamped before a "Permit to Excavate" will be valid. For your City Agent ID Number call Underground Service Alert. TOLL FREE 1-800-122-4133 for working days before you dig.

FOR 11 x 17
PRINT AT 1:45 SCALE =



ENGINEER IN RESPONSIBLE CHARGE
LONNY LEW YOUNG
R.C.E. No. 43216 expires 3/31/08
DATE 10/11/2007

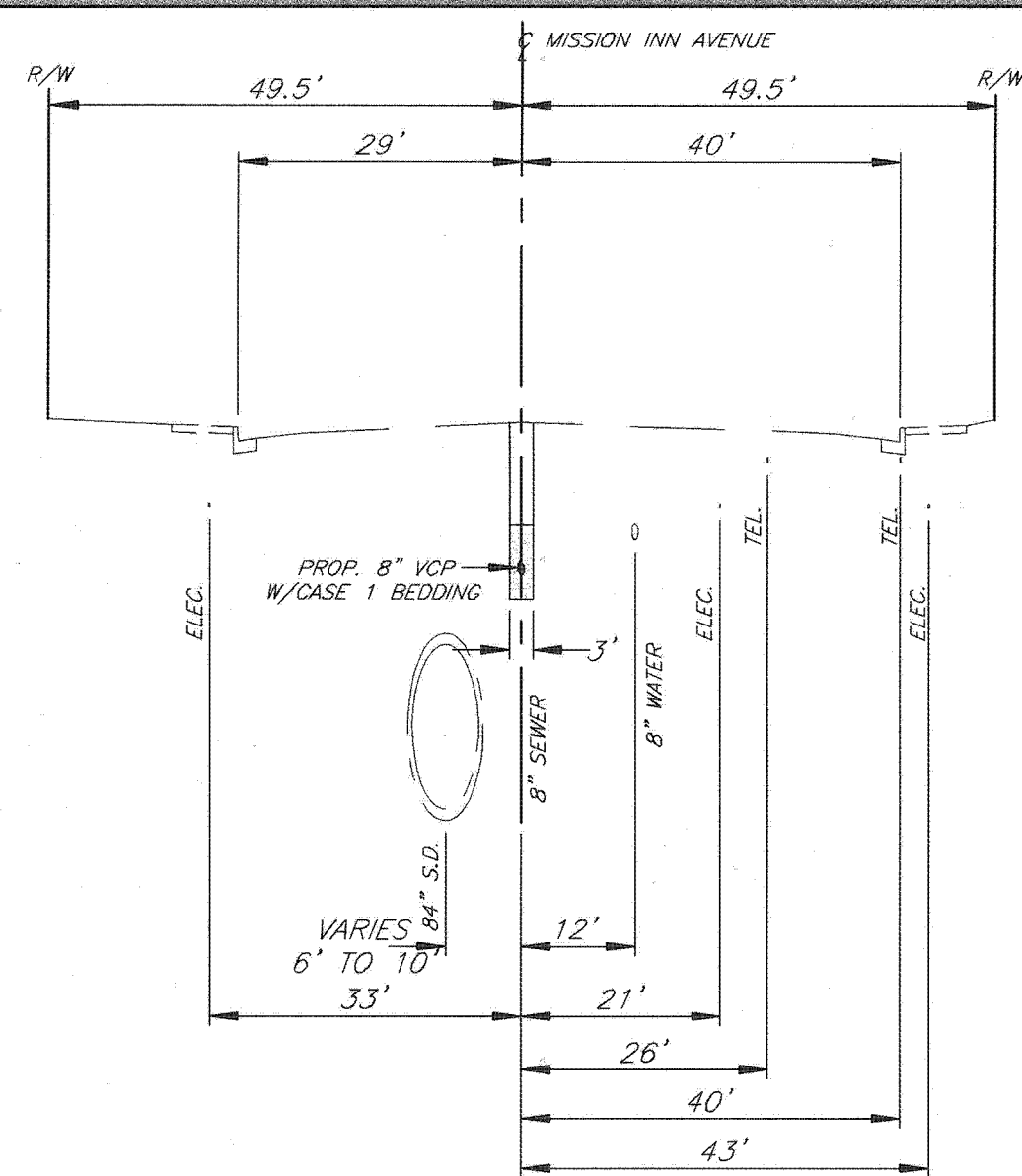


MARK	REVISIONS	APPR.	DATE

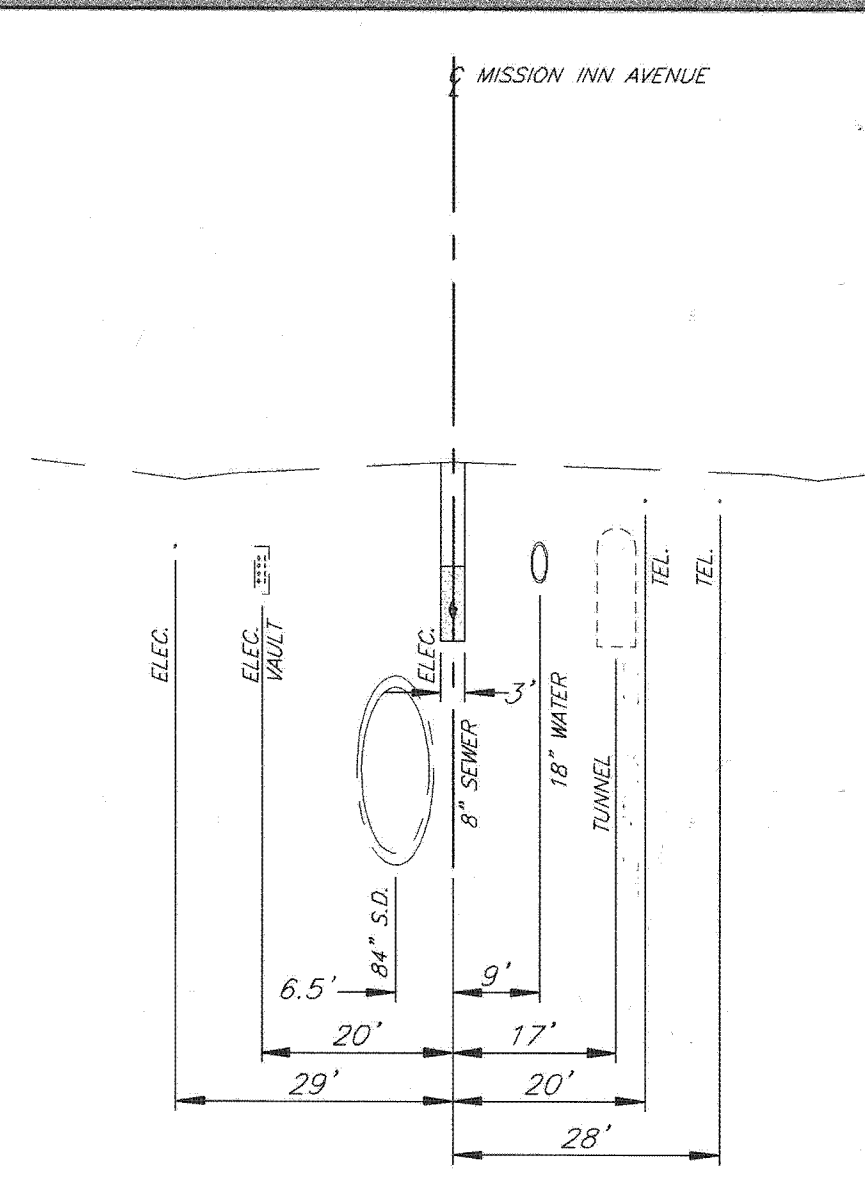
CITY OF RIVERSIDE, CALIFORNIA
PUBLIC WORKS DEPARTMENT
APPROVED BY: [Signature]
DATE: 10/16/07

MISSION INN AVENUE SEWER MAIN REPLACEMENT BETWEEN FAIRMOUNT BOULEVARD AND SANTA FE AVE.
TITLE SHEET

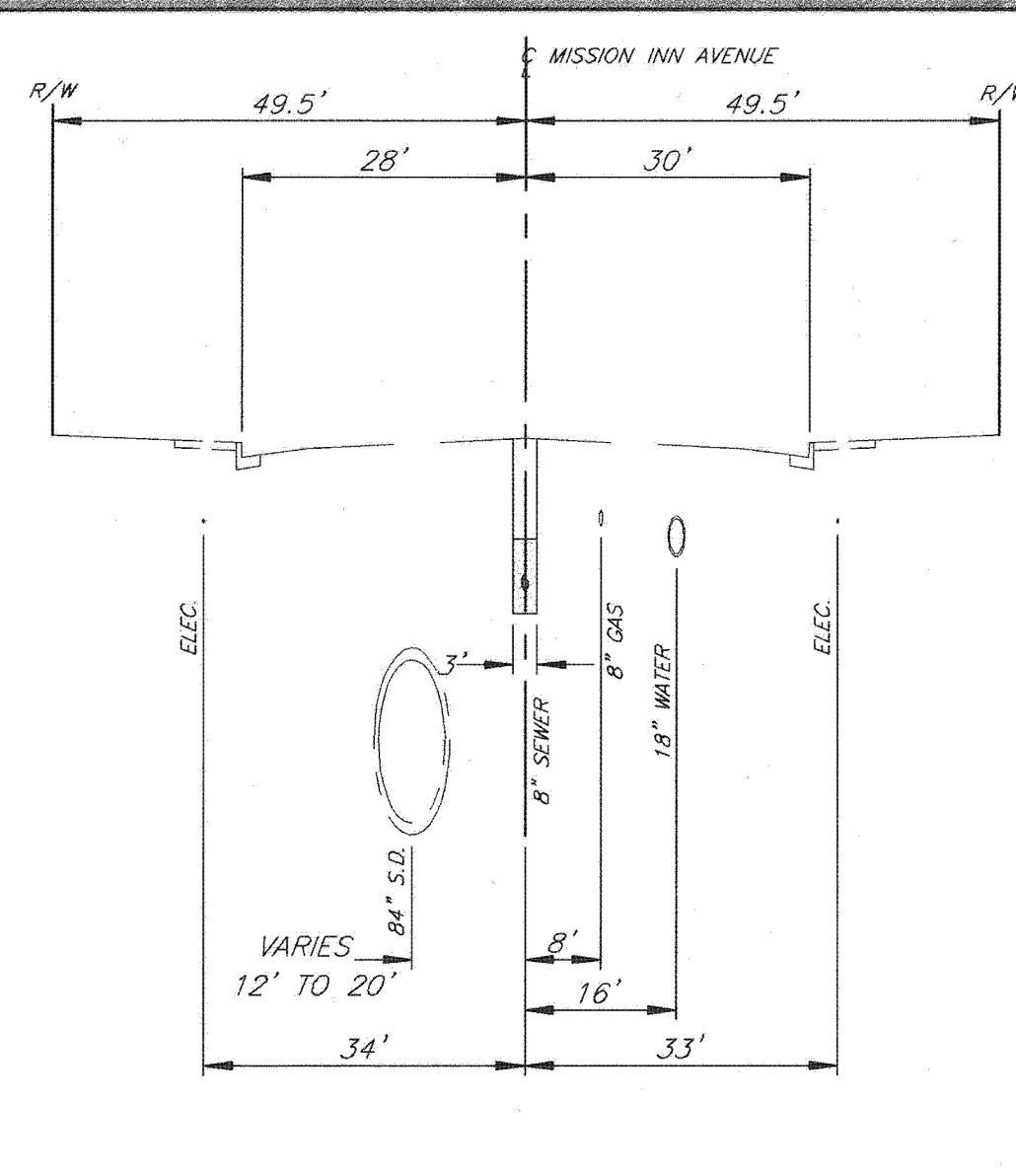
ACCT. NO.: 981162303
S-2037
SHEET 1 OF 6
FILE NO.



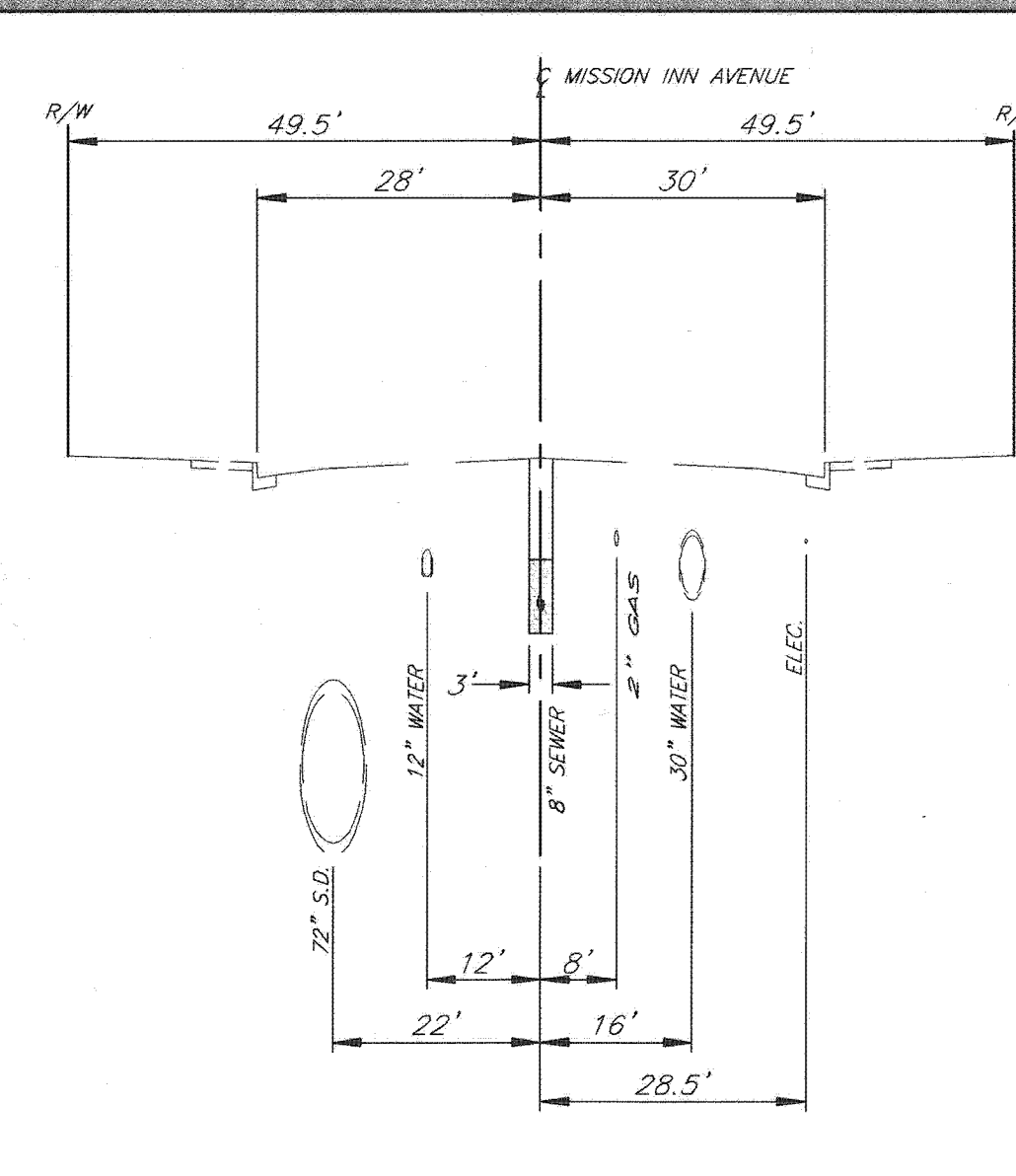
MISSION INN AVENUE SECTION
FROM STA. 8+00 TO 8+71.66



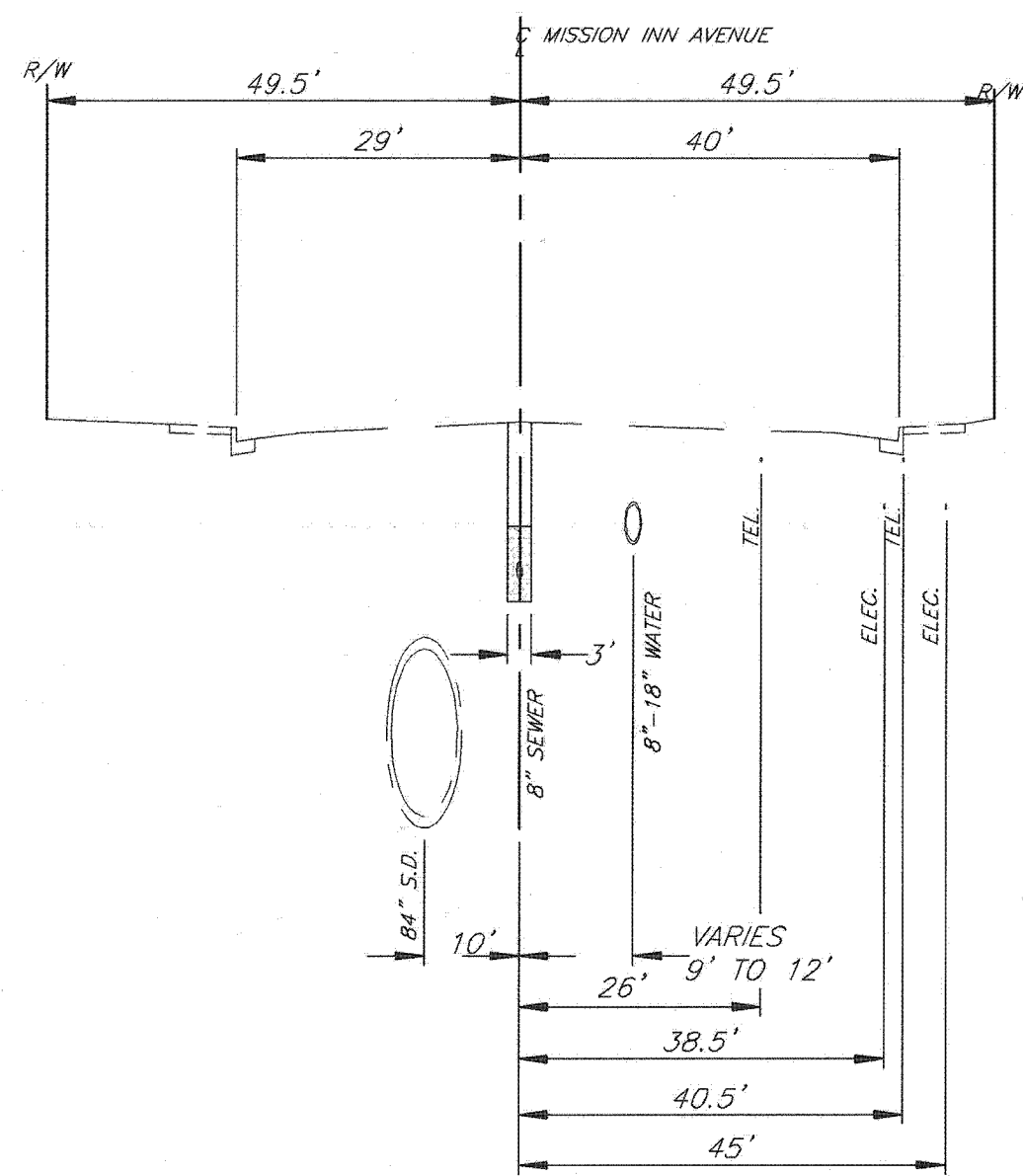
MISSION INN AVENUE SECTION
FROM STA. 18+53.09 TO 18+61.09



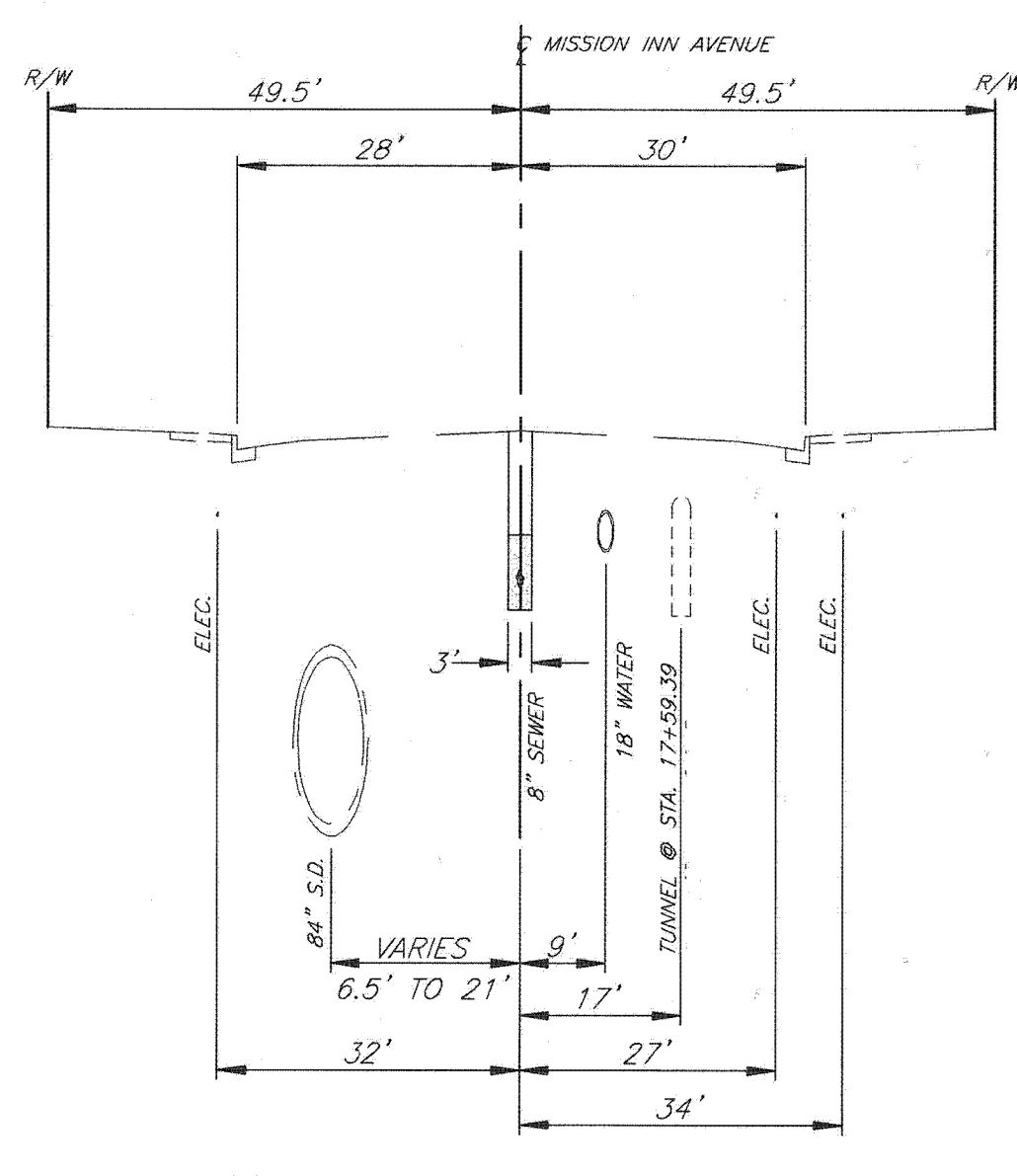
MISSION INN AVENUE SECTION
FROM STA. 22+60.64 TO 23+63.90



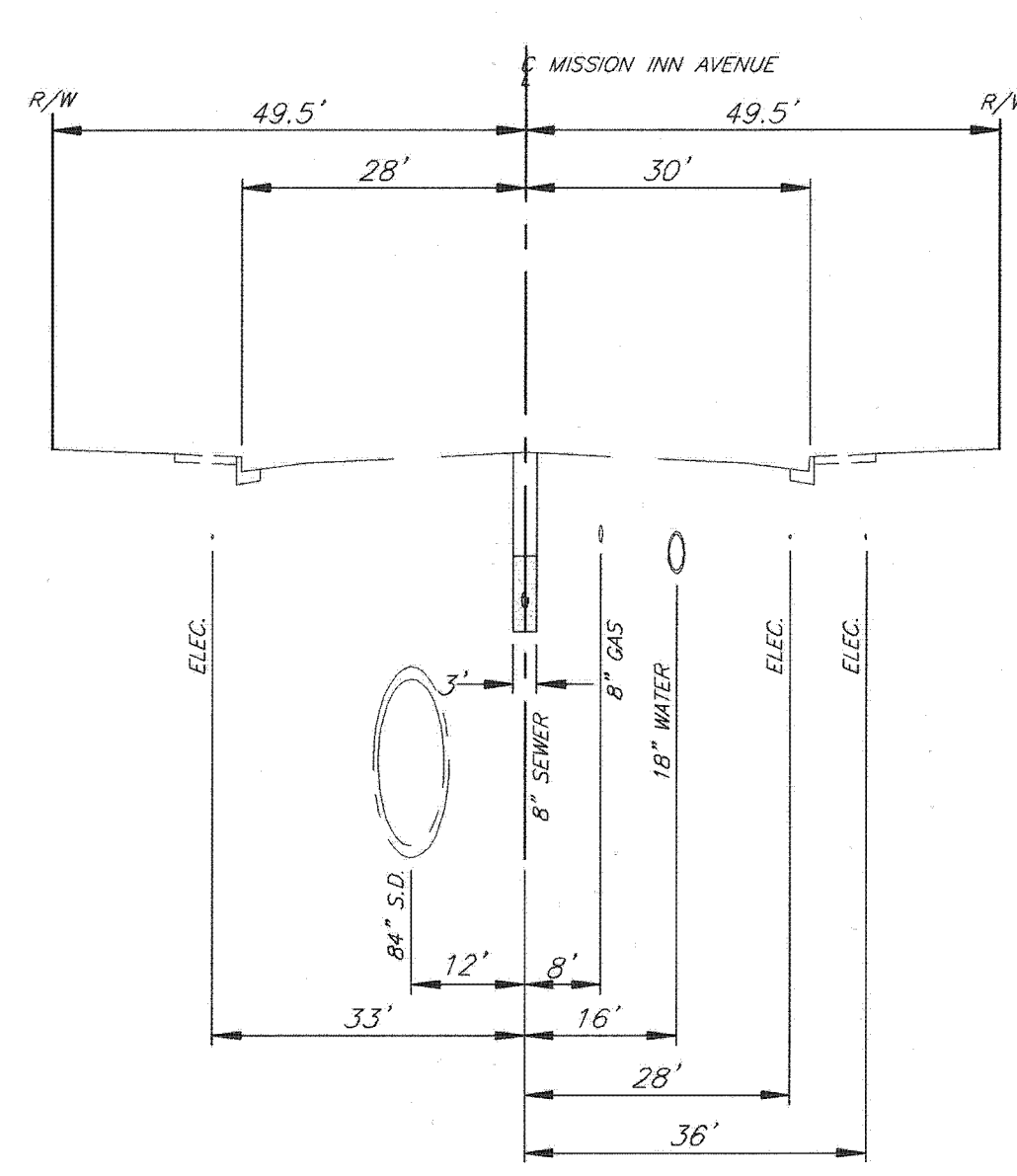
MISSION INN AVENUE SECTION
FROM STA. 31+44.70 TO 37+13.89



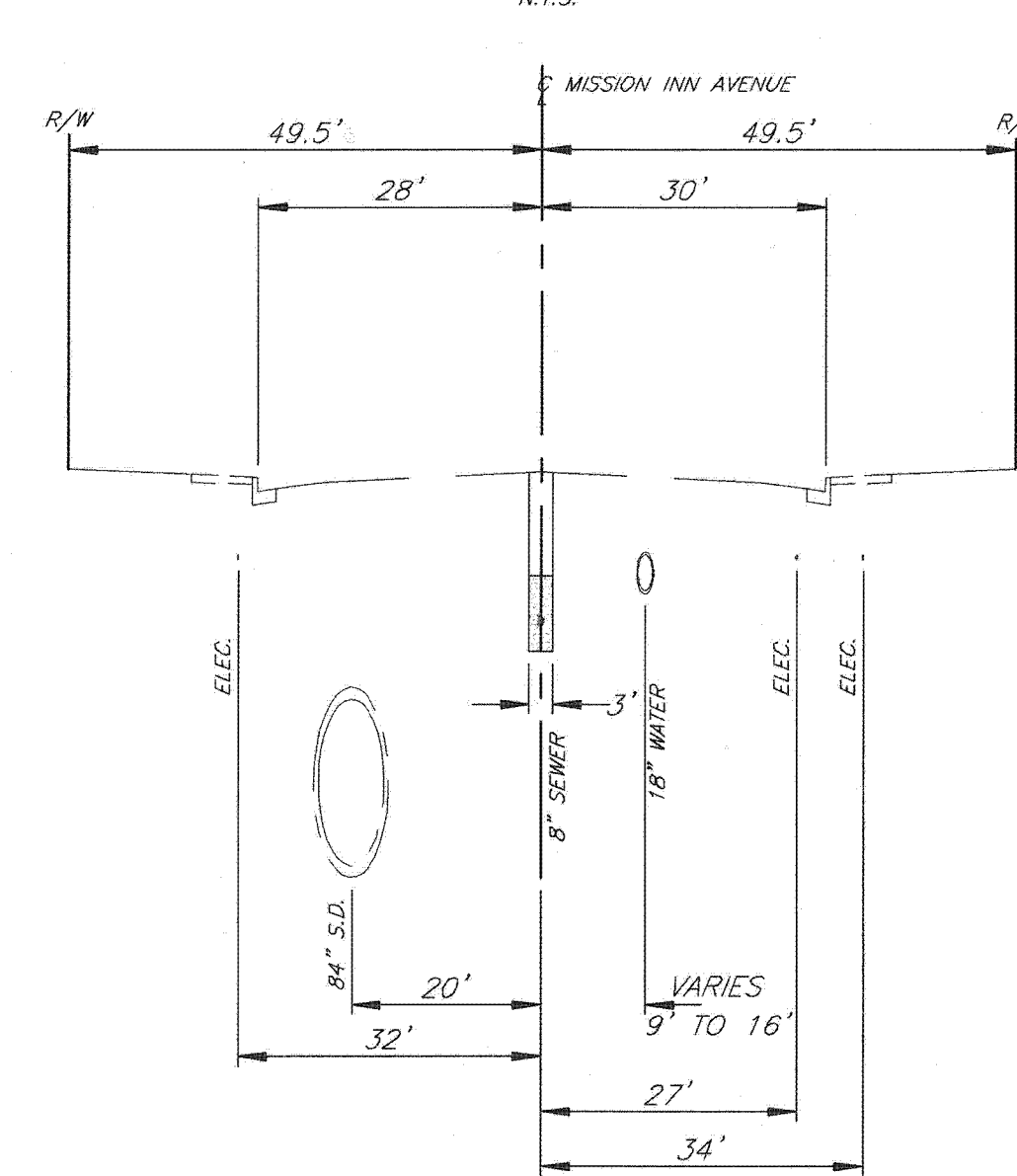
MISSION INN AVENUE SECTION
FROM STA. 8+71.66 TO 18+12.93



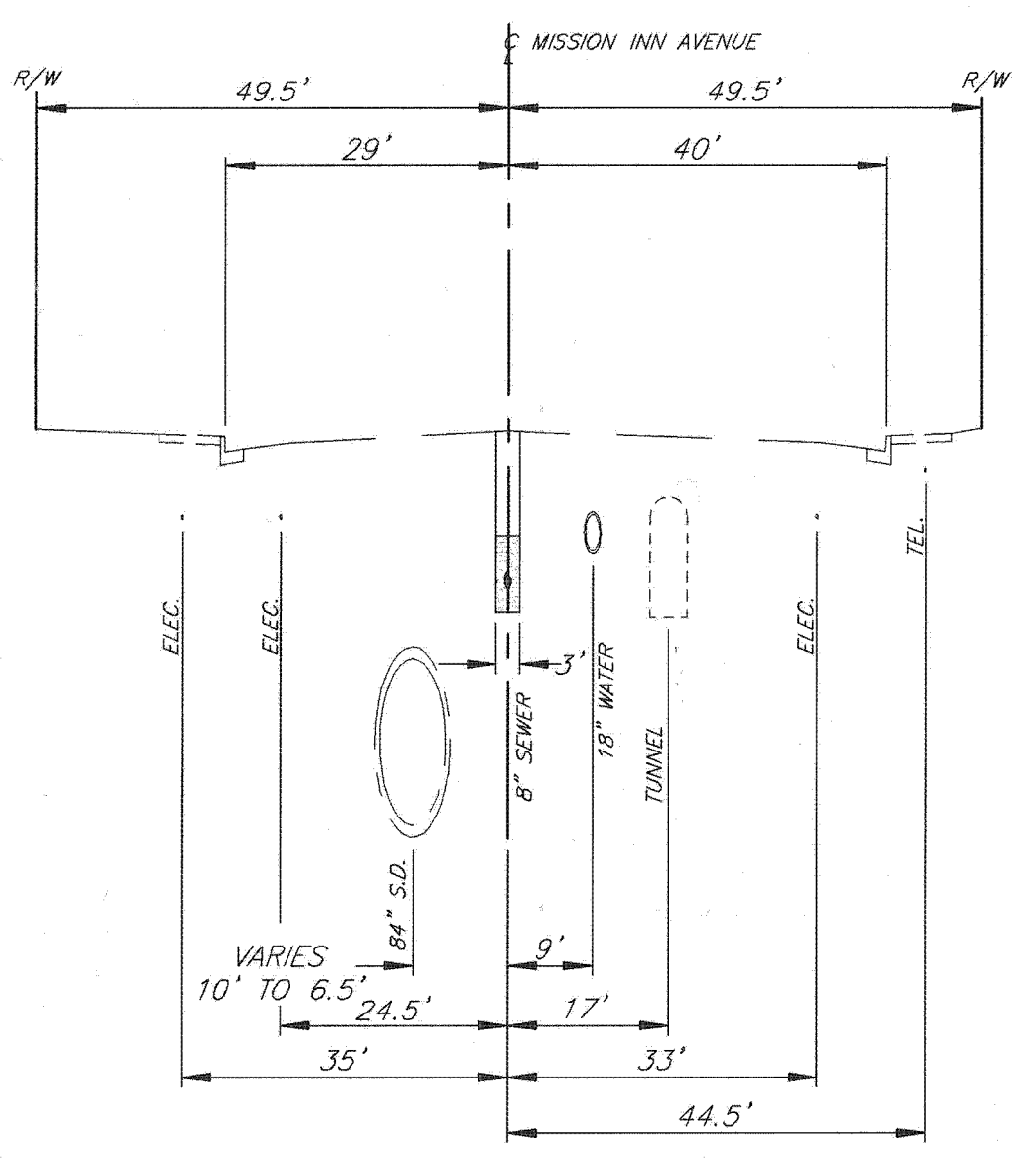
MISSION INN AVENUE SECTION
FROM STA. 18+61.09 TO 20+27.46



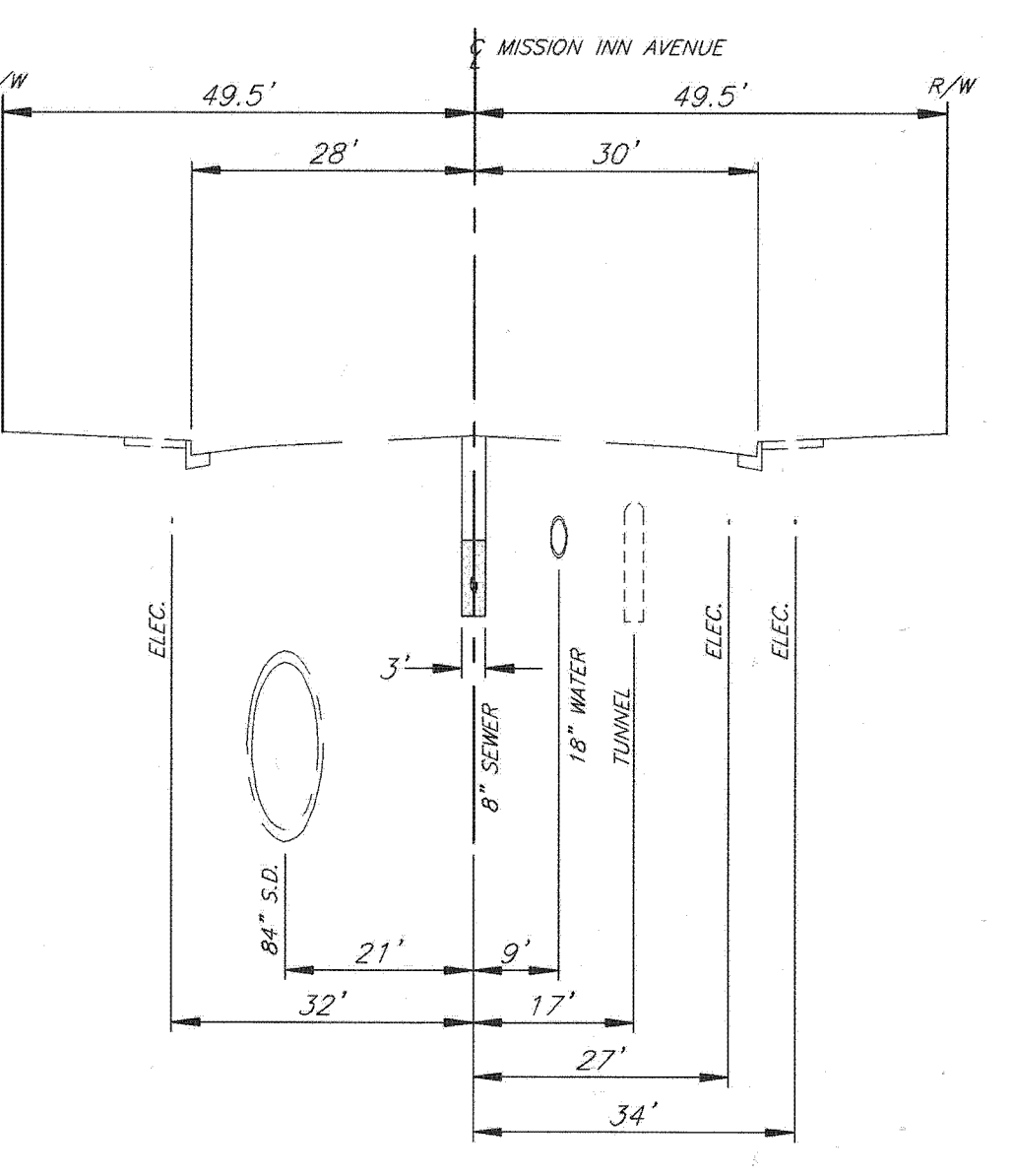
MISSION INN AVENUE SECTION
FROM STA. 23+63.90 TO 30+29.96



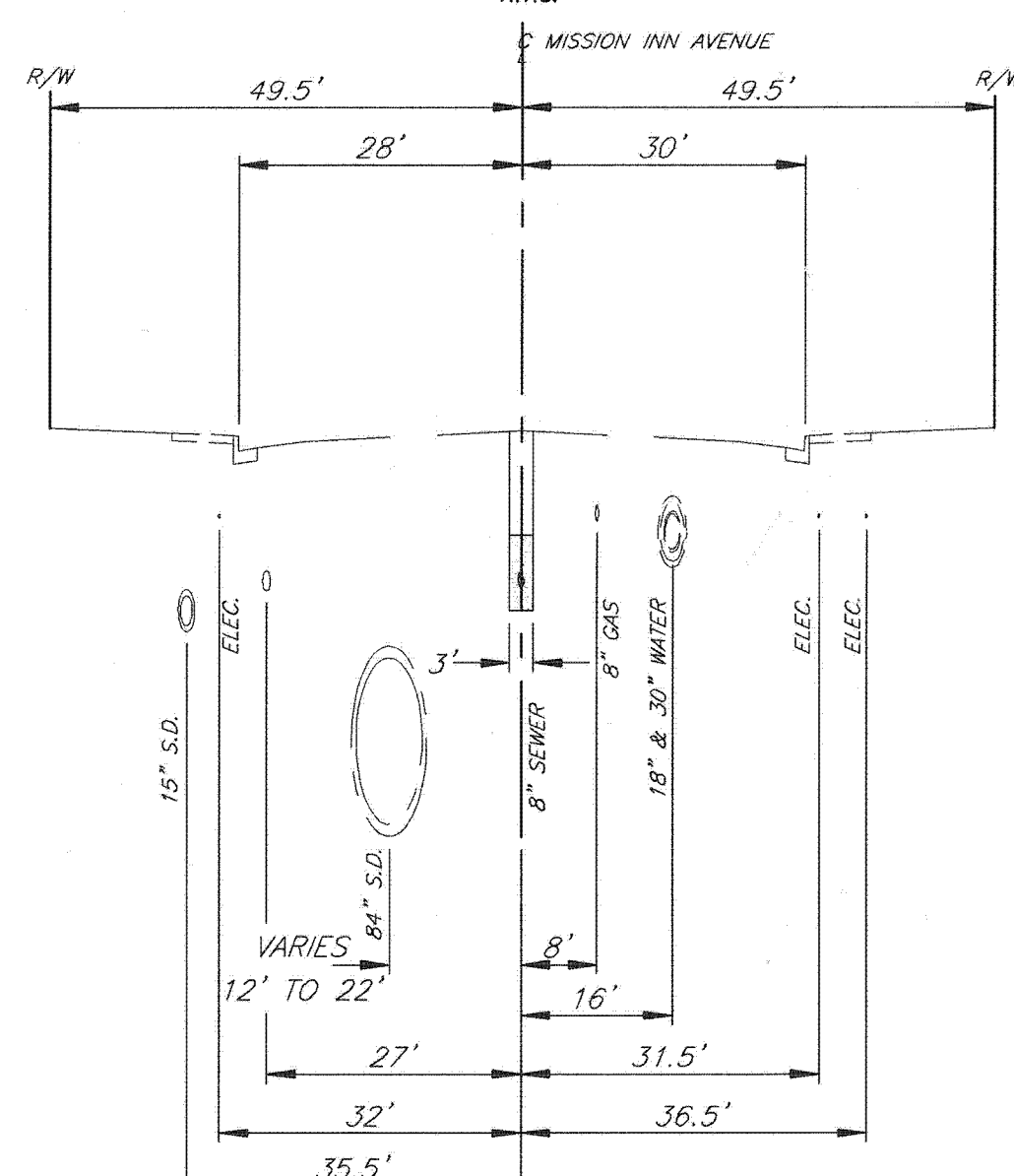
MISSION INN AVENUE SECTION
FROM STA. 21+44.88 TO 21+81.15



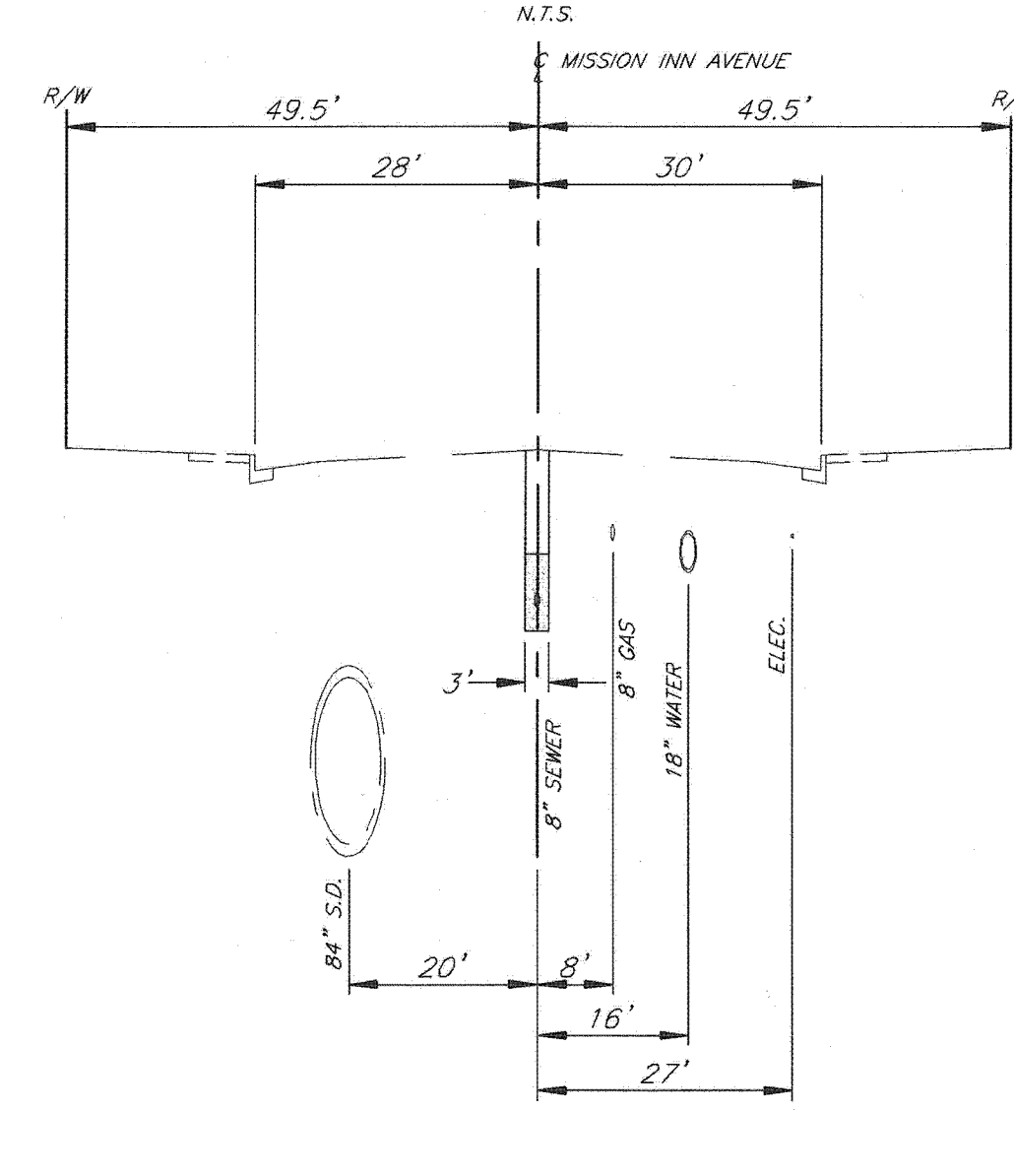
MISSION INN AVENUE SECTION
FROM STA. 18+12.93 TO 18+53.09



MISSION INN AVENUE SECTION
FROM STA. 20+27.46 TO 22+60.64



MISSION INN AVENUE SECTION
FROM STA. 30+29.96 TO 31+44.70



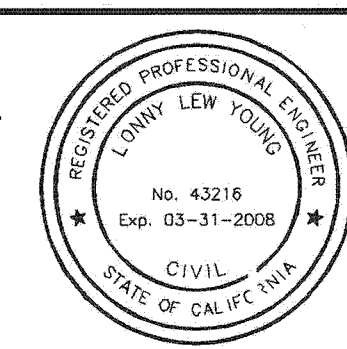
MISSION INN AVENUE SECTION
FROM STA. 21+81.15 TO 22+59.31

BENCHMARK
P.K. NAIL AND CITY ENGINEER TAG IN THE BACK OF A CATCH BASIN ALONG THE W/LY CURB OF ORANGE ST. AT THE SW'LY CORNER OF ORANGE ST. & ELEVATION 852.637'

IMPORTANT NOTICE
Section 4216.4217 of the Government Code requires a Dig Alert Identification Number to be placed before a "Hazard to Excavate" will be void. For your city alert I.D. Number call Underground Services Dept. TOLL FREE 1-800-122-4133 Two working days before you dig.

FOR 11 x 17
PRINT AT 1:45 SCALE =

ENGINEER IN RESPONSIBLE CHARGE
Lonny Lew Young
LONNY LEW YOUNG
R.C.E. No. 43216 expires 3/31/08
DATE 10/11/07



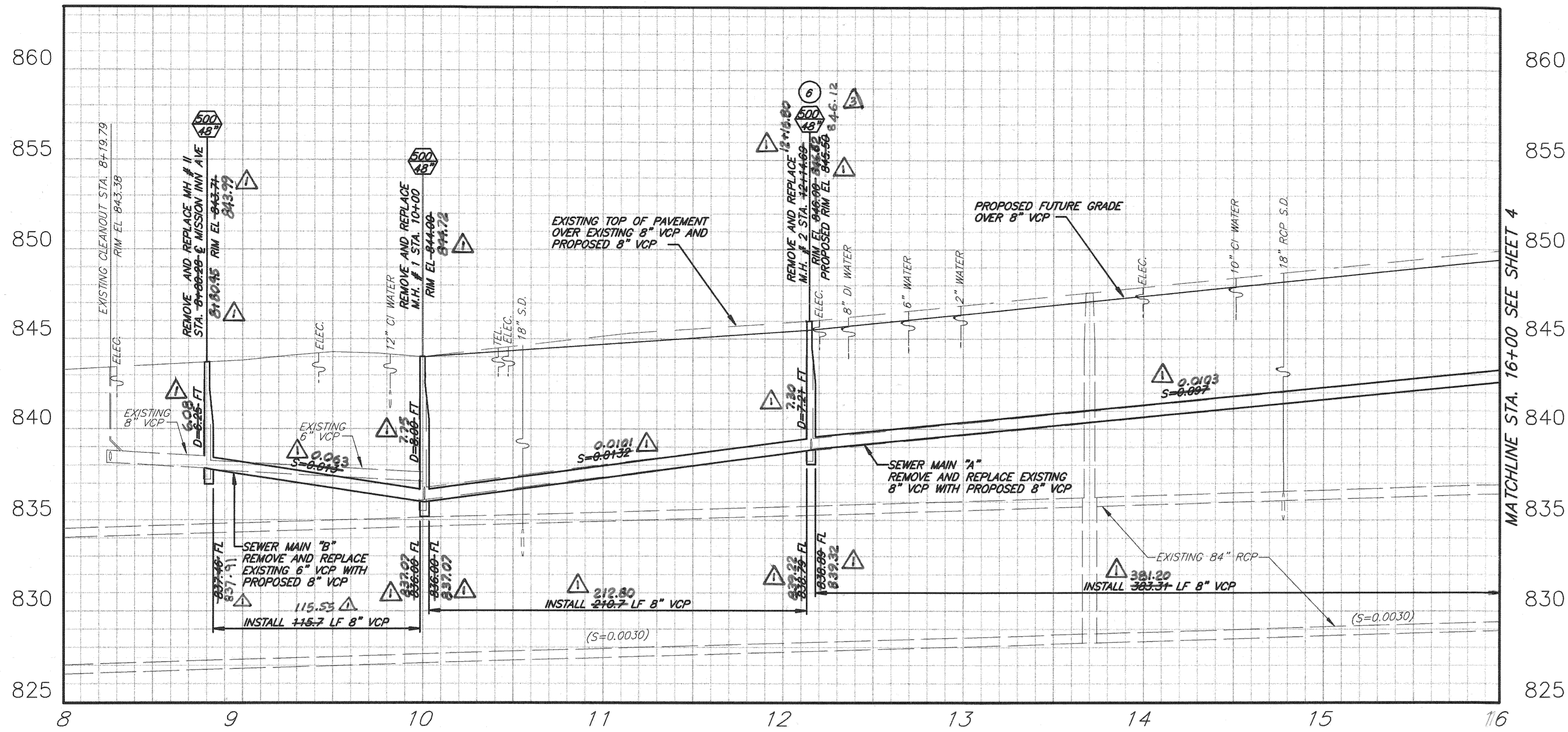
CITY OF RIVERSIDE, CALIFORNIA PUBLIC WORKS DEPARTMENT			
APPROVED BY	BY	DATE	APPROVED BY
ENGINEERING MANAGER	<i>[Signature]</i>	10/11/07	<i>[Signature]</i>
PRINCIPAL ENGINEER	<i>[Signature]</i>	10/11/07	CITY ENGINEER
TRAFFIC DIVISION	<i>[Signature]</i>	10/11/07	
SURVEYOR	<i>[Signature]</i>	10/11/07	
SHEET-SERVICES	<i>[Signature]</i>	10/11/07	
INSPECTION	<i>[Signature]</i>	10/11/07	

MISSION INN AVENUE SEWER MAIN REPLACEMENT BETWEEN FAIRMOUNT BOULEVARD AND SANTA FE AVE. TYPICAL SECTIONS

ACCT. NO.: 981162363
S-2037
SHEET 2 OF 6
FILE NO.

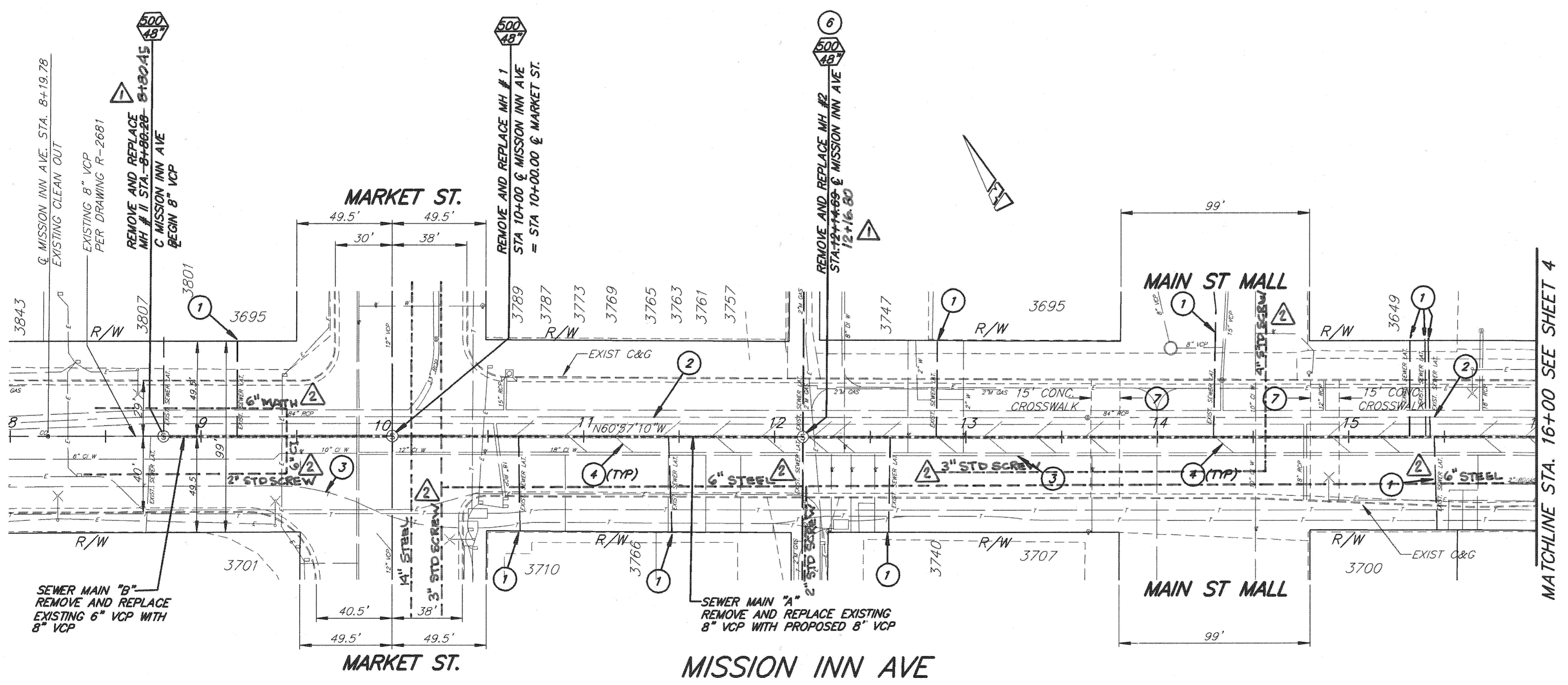
HORIZ. SCALE: 1" = 40' VERT. SCALE: 1" = 4'

INDEXED 10-30-07 LHY



SPECIFIC CONSTRUCTION NOTES:

- 1 RECONNECT LATERALS TO NEW SEWER PIPELINE PER STANDARD DRAWING 554 OR REPLACE EXISTING LATERAL PER STANDARD DRAWING 562 AND PER SPECIFICATIONS. CONTRACTOR TO FIELD VERIFY LATERAL LOCATION AND CONNECTION.
- 2 PRIOR TO CONSTRUCTION CONTRACTOR TO FIELD VERIFY LOCATION OF EXISTING 84" RCP - 72" RCP AND PROTECT IN PLACE.
- 3 PRIOR TO CONSTRUCTION CONTRACTOR TO FIELD VERIFY LOCATIONS OF ALL EXISTING UTILITIES AND PROTECT IN PLACE.
- 4 CONTRACTOR TO REMOVE EXISTING CAPPED LATERALS WITHIN TRENCH LIMITS AND ABANDON REMAINING PORTION PER GREEN BOOK.
- 6 BUILD MANHOLES TO PROPOSED FUTURE GRADE AND ADD GRADE RINGS TO ADJUST MANHOLE FRAME AND COVERS TO MEET EXISTING GRADE. WHERE THE EXISTING AND PROPOSED GRADE DIFFERS AS SHOWN ON THE PLANS.
- 7 CONCRETE CROSSWALK - REMOVE AND REPAIR CONCRETE TO NEAREST SAWCUT LINE OUTSIDE OF DISTURBED TRENCH AREA.



BENCHMARK
P.K., NAIL AND CITY ENGINEER TAG IN THE BACK OF A CATCH BASIN ALONG THE WLY CURB OF ORANGE ST. AT THE SWLY CORNER OF ORANGE ST. & THIRD ST.
ELEVATION 852.637'

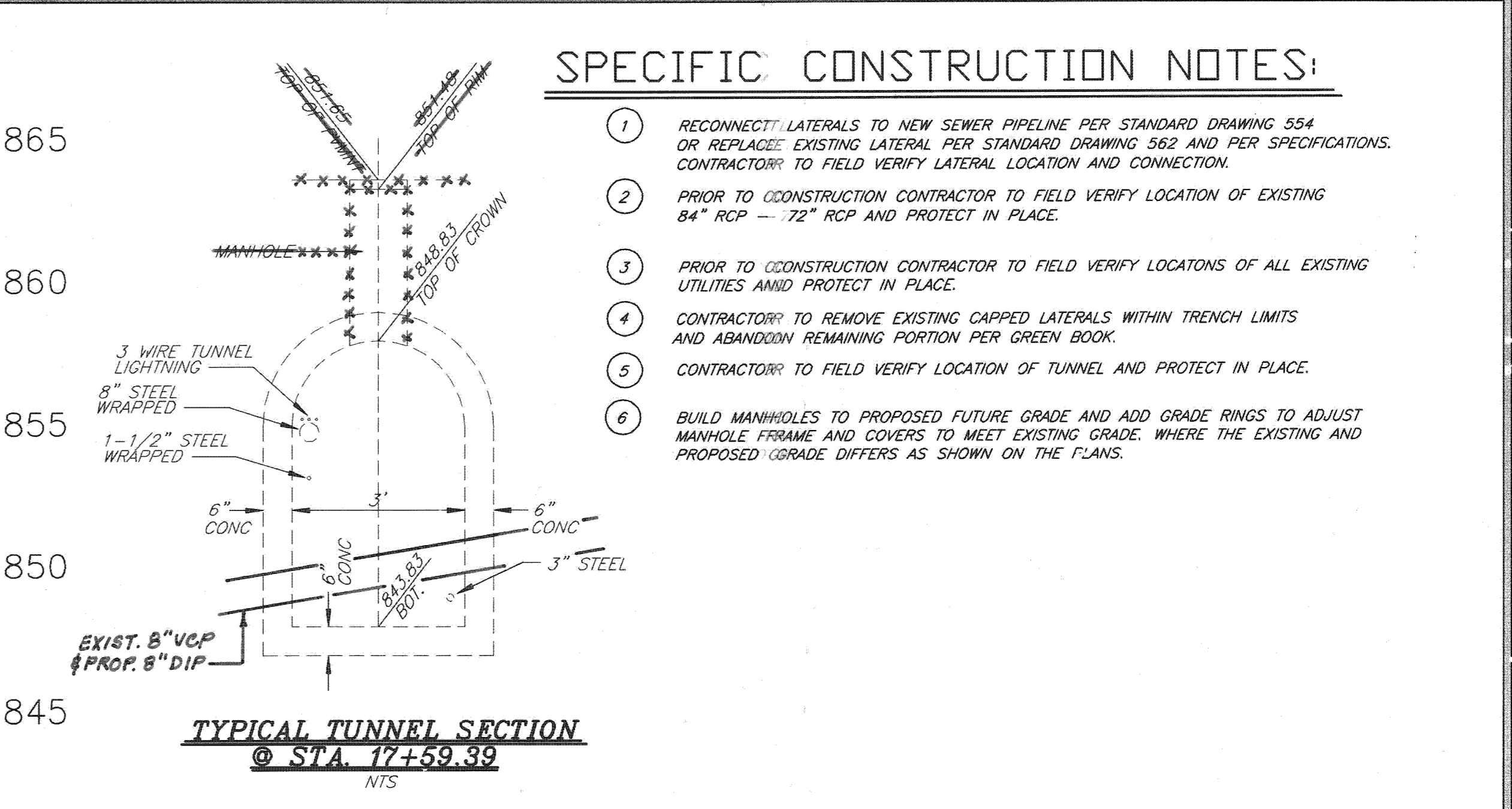
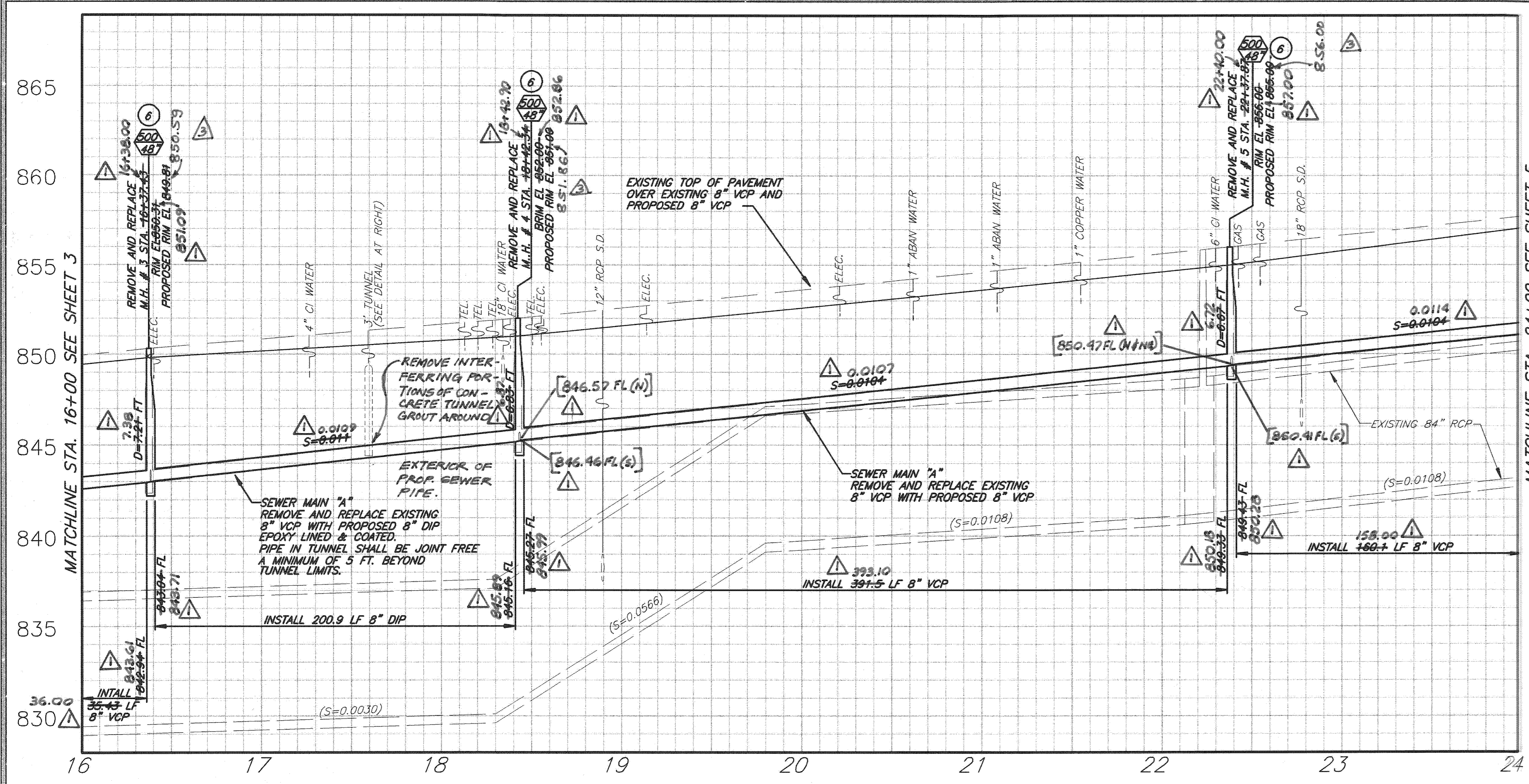
IMPORTANT NOTICE
Section 4216/4217 of the Government Code requires a Dig Alert identification number to be issued before a Permit to Excavate will be valid. For more Dig Alert info, please call Underground Service Alert. Toll free 1-800-122-4133. Two working days before you dig.

ENGINEER IN RESPONSIBLE CHARGE
LONNIE LEW YOUNG
R.C.E. No. 43216 expires 3/31/08
DATE 10/11/2007



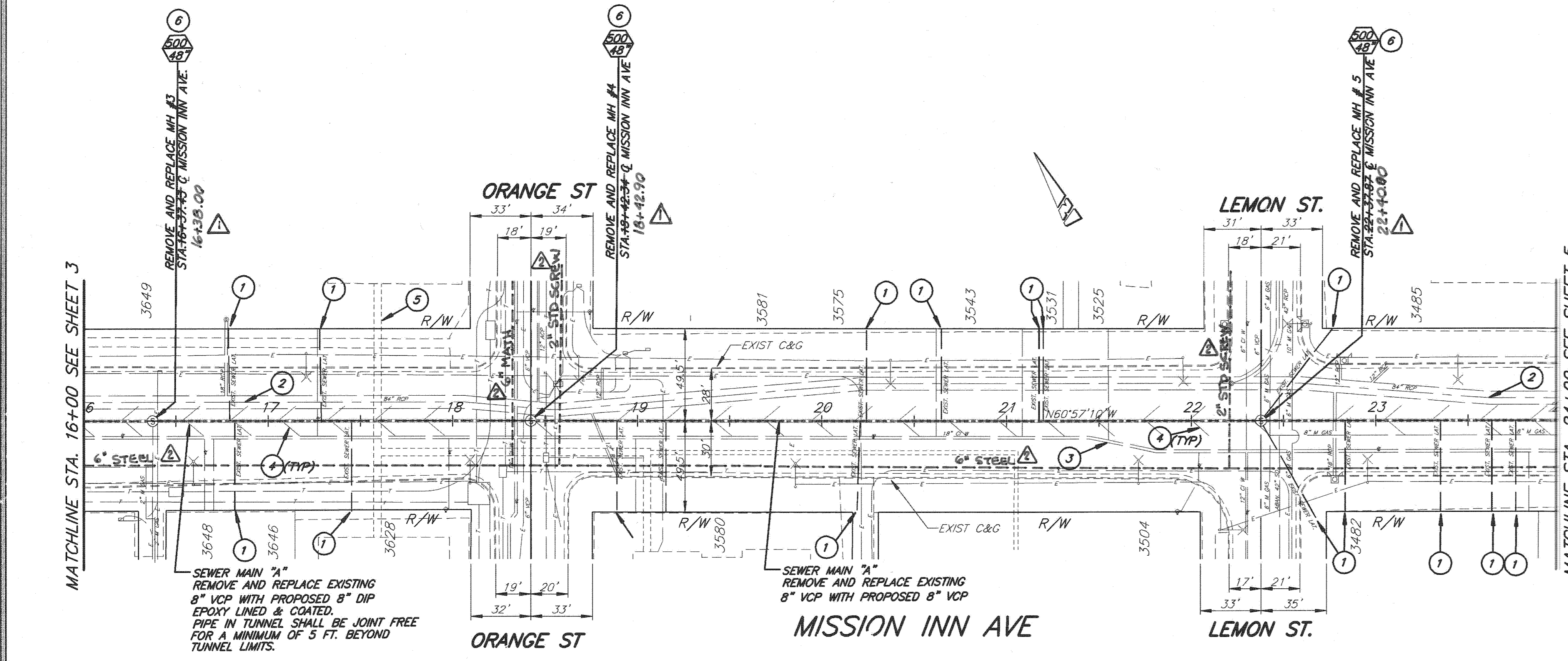
CITY OF RIVERSIDE, CALIFORNIA PUBLIC WORKS DEPARTMENT			
APPROVED BY	BY	DATE	APPROVED BY
PRINCIPAL ENGINEER	[Signature]	10/11/07	CITY ENGINEER
SRVICE-ENGINEER	[Signature]		
SUPERVISOR	[Signature]		
TRAFFIC DIVISION	[Signature]		
ENGINEERING MGR	[Signature]		

MISSION INN AVENUE SEWER MAIN REPLACEMENT BETWEEN FAIRMOUNT BOULEVARD AND SANTA FE AVE. STA. 8+00 TO STA. 16+00		ACCT. NO. 981162303
S-2037		SHEET 3 OF 6
HORIZ. SCALE: 1" = 40'		VERT. SCALE: 1" = 4'
FILE NO.		



SPECIFIC CONSTRUCTION NOTES:

- 1 RECONNECT LATERALS TO NEW SEWER PIPELINE PER STANDARD DRAWING 554 OR REPLACE EXISTING LATERAL PER STANDARD DRAWING 562 AND PER SPECIFICATIONS. CONTRACTOR TO FIELD VERIFY LATERAL LOCATION AND CONNECTION.
- 2 PRIOR TO CONSTRUCTION CONTRACTOR TO FIELD VERIFY LOCATION OF EXISTING 84" RCP - 72" RCP AND PROTECT IN PLACE.
- 3 PRIOR TO CONSTRUCTION CONTRACTOR TO FIELD VERIFY LOCATIONS OF ALL EXISTING UTILITIES AND PROTECT IN PLACE.
- 4 CONTRACTOR TO REMOVE EXISTING CAPPED LATERALS WITHIN TRENCH LIMITS AND ABANDON REMAINING PORTION PER GREEN BOOK.
- 5 CONTRACTOR TO FIELD VERIFY LOCATION OF TUNNEL AND PROTECT IN PLACE.
- 6 BUILD MANHOLES TO PROPOSED FUTURE GRADE AND ADD GRADE RINGS TO ADJUST MANHOLE FRAME AND COVERS TO MEET EXISTING GRADE. WHERE THE EXISTING AND PROPOSED GRADE DIFFERS AS SHOWN ON THE PLANS.



BENCHMARK
 P.K. NAIL AND CITY ENGINEER TAG IN THE BACK OF A CATCH BASIN ALONG THE W/1/2 CURB OF ORANGE ST. AT THE SW/4 CORNER OF ORANGE ST. & THIRD ST.
 ELEVATION 852.637'

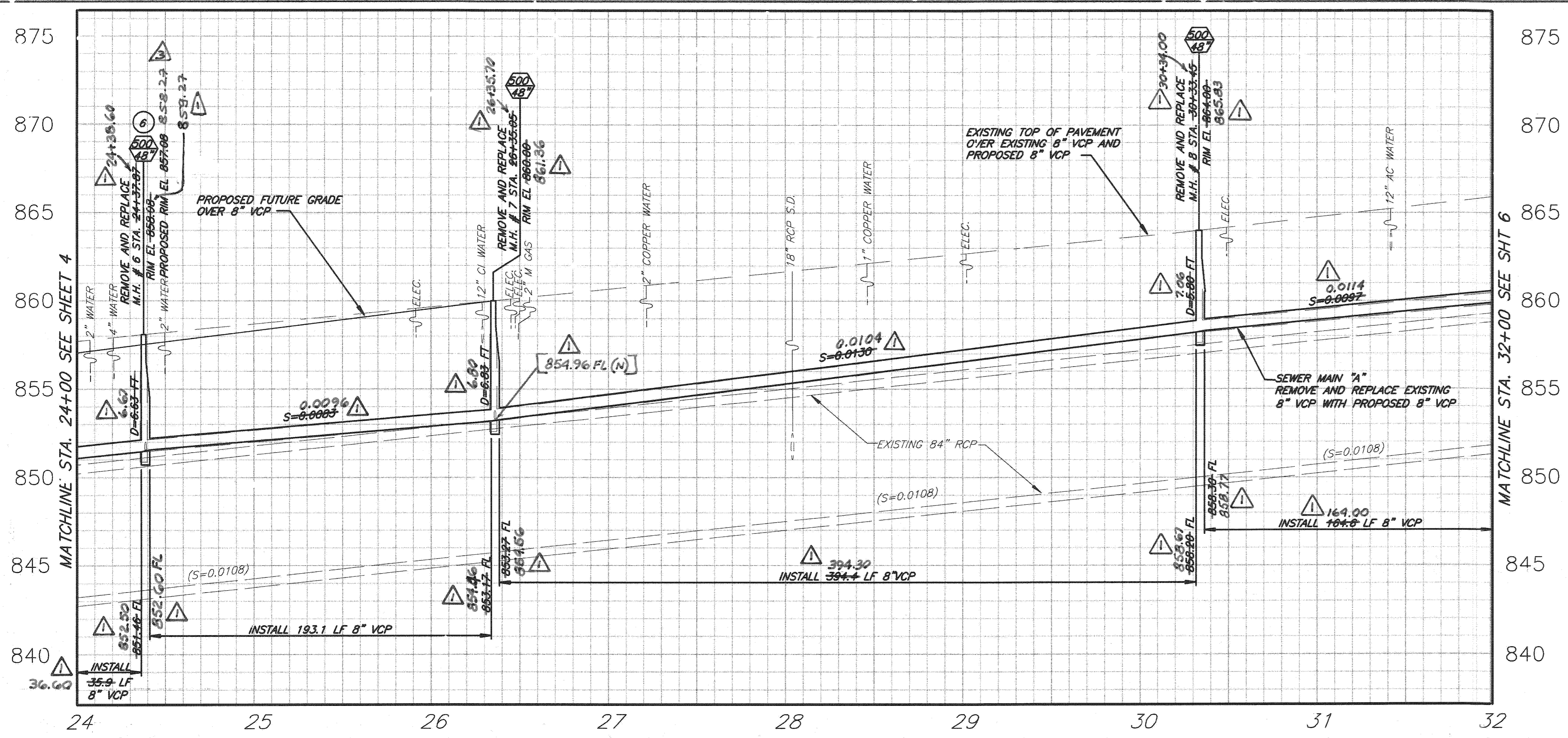
IMPORTANT NOTICE
 Section 4216.4217 of the Government Code requires a Dig Alert identification number to be issued before a permit to excavate will be void. For your Dig Alert ID, Number call Underground Service Alert. TOLL FREE 1-800-122-4133. Two working days before you dig.

ENGINEER IN RESPONSIBLE CHARGE
 LONNIE LEW YOUNG
 R.C.E. No. 43216 expires 3/31/08
 DATE 10/11/2007

CITY OF RIVERSIDE, CALIFORNIA PUBLIC WORKS DEPARTMENT
 APPROVED BY: [Signature]
 DATE: 10/16/07

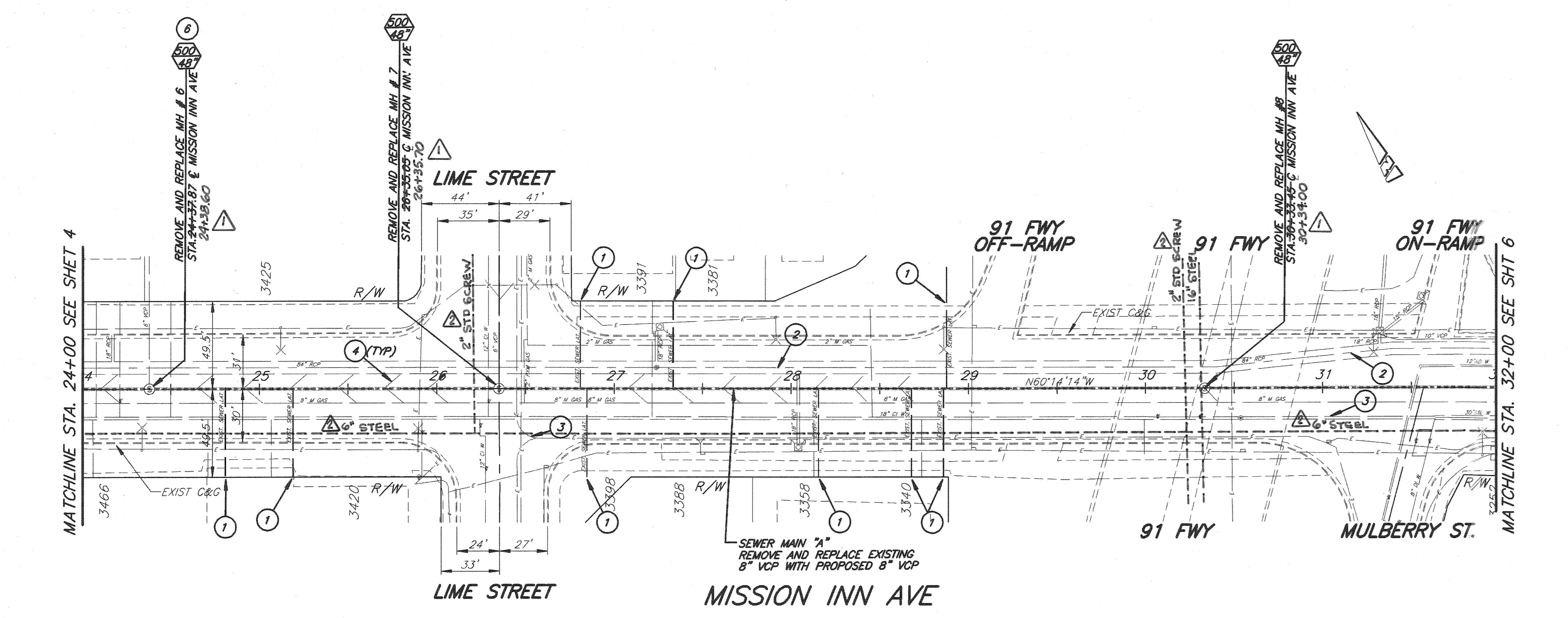
MISSION INN AVENUE SEWER MAIN REPLACEMENT BETWEEN FAIRMOUNT BOULEVARD AND SANTA FE AVE. STA. 16+00 TO STA. 24+00

ACCT. NO. 981162303-
S-2037
 SHEET 4 OF 6
 FILE NO.



SPECIFIC CONSTRUCTION NOTES:

- 1 RECONNECT LATERALS TO NEW SEWER PIPELINE PER STANDARD DRAWING 554 OR REPLACE EXISTING LATERAL PER STANDARD DRAWING 562 AND PER SPECIFICATIONS. CONTRACTOR TO FIELD VERIFY LATERAL LOCATION AND CONNECTION.
- 2 PRIOR TO CONSTRUCTION CONTRACTOR TO FIELD VERIFY LOCATION OF EXISTING 84" RCP - 72" RCP AND PROTECT IN PLACE.
- 3 PRIOR TO CONSTRUCTION CONTRACTOR TO FIELD VERIFY LOCATIONS OF ALL EXISTING UTILITIES AND PROTECT IN PLACE.
- 4 CONTRACTOR TO REMOVE EXISTING CAPPED LATERALS WITHIN TRENCH LIMITS AND ABANDON REMAINING PORTION PER GREEN BOOK.
- 5 CONTRACTOR TO FIELD VERIFY LOCATION OF TUNNEL AND PROTECT IN PLACE.
- 6 BUILD MANHOLES TO PROPOSED FUTURE GRADE AND ADD GRADE RINGS TO ADJUST MAINHOLE FRAME AND COVERS TO MEET EXISTING GRADE. WHERE THE EXISTING AND PROPOSED GRADE DIFFERS AS SHOWN ON THE PLANS.



BENCHMARK
P.K. NAIL AND CITY ENGINEER TAG IN THE BACK OF A CATCH BASIN ALONG THE S/WLY CURB OF ORANGE ST. AT THE SWLY CORNER OF ORANGE ST. & THIRD ST.
ELEVATION 852.637'

IMPORTANT NOTICE
Section 4216/4217 of the Government Code requires a Dig Alert identification number to be issued before a permit to excavate will be voided. For your Dig Alert ID, number call Underground Service alert. TOLL FREE 1-800-122-4133. The working days before you dig.

ENGINEER IN RESPONSIBLE CHARGE
LONNIE LEW YOUNG
R.C.E. No. 43216 expires 3/31/08
DATE 10/11/2007



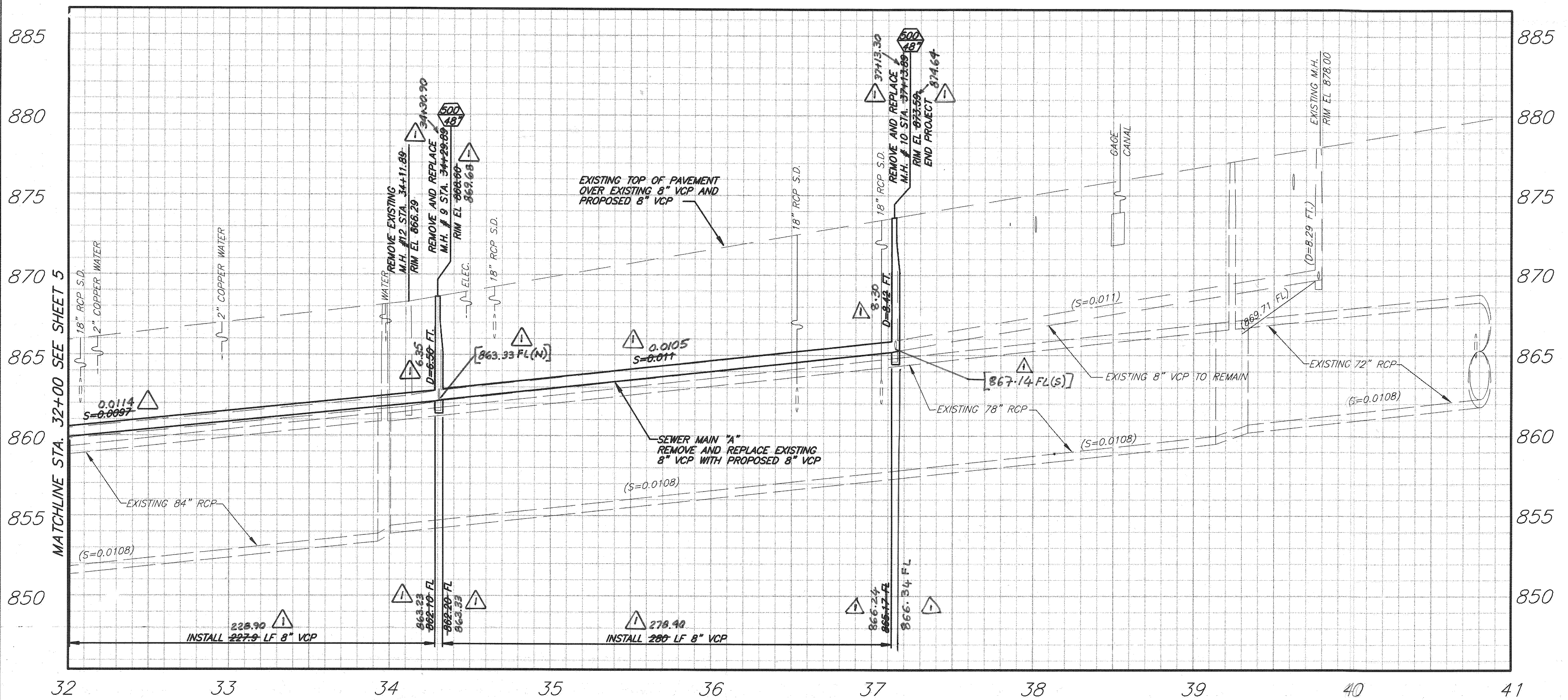
DESIGNED BY USMA DRAWN BY LPM CHECKED BY

CITY OF RIVERSIDE, CALIFORNIA
PUBLIC WORKS DEPARTMENT

APPROVED BY	BY	DATE	APPROVED BY	BY	DATE
PRINCIPAL ENGINEER	[Signature]		CITY ENGINEER	[Signature]	10/11/07
STREET-SERVICES SUPERVISOR					
TRAFFIC DIVISION					

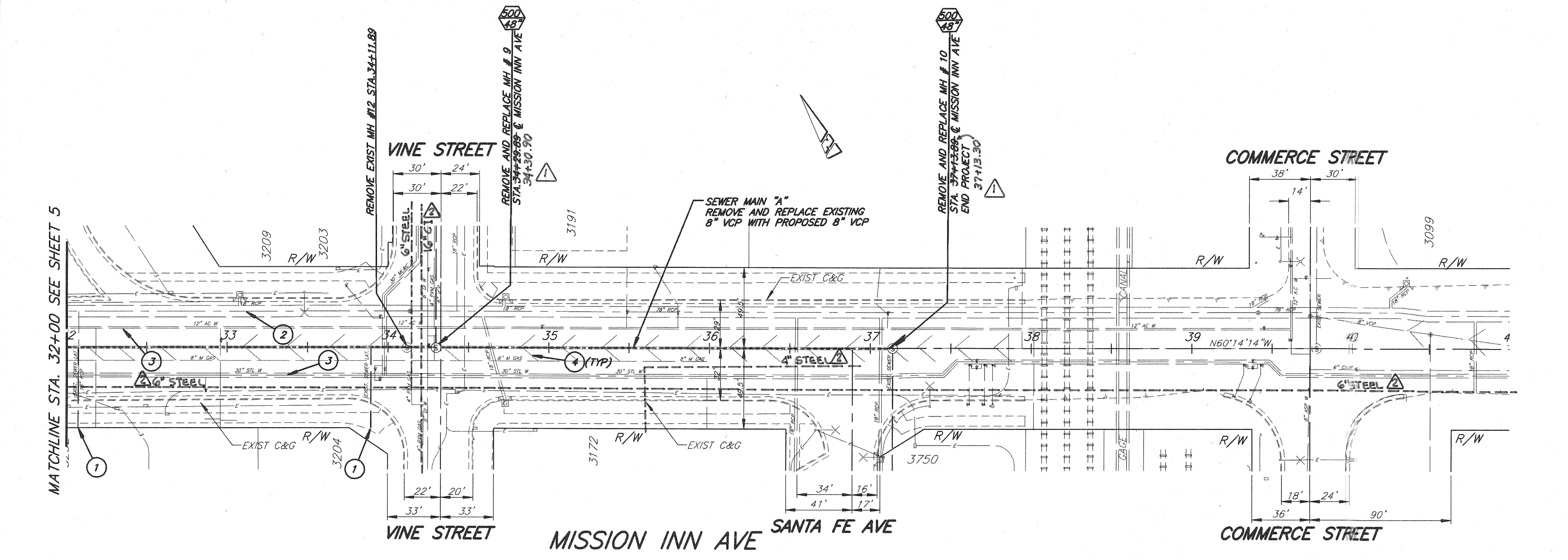
MISSION INN AVENUE SEWER MAIN REPLACEMENT BETWEEN FAIRMOUNT BOULEVARD AND SANTA FE AVE. STA. 24+00 TO 32+00

ACCT. NO. 981162303
S-2037
SHEET 5 OF 6
FILE NO.



SPECIFIC CONSTRUCTION NOTES:

- 1 RECONNECT LATERALS TO NEW SEWER PIPELINE PER STANDARD DRAWING 554 OR REPLACE EXISTING LATERAL PER STANDARD DRAWING 562 AND PER SPECIFICATIONS. CONTRACTOR TO FIELD VERIFY LATERAL LOCATION AND CONNECTION.
- 2 PRIOR TO CONSTRUCTION CONTRACTOR TO FIELD VERIFY LOCATION OF EXISTING 84" RCP - 72" RCP AND PROTECT IN PLACE.
- 3 PRIOR TO CONSTRUCTION CONTRACTOR TO FIELD VERIFY LOCATIONS OF ALL EXISTING UTILITIES AND PROTECT IN PLACE.
- 4 CONTRACTOR TO REMOVE EXISTING CAPPED LATERALS WITHIN TRENCH LIMITS AND/ABANDON REMAINING PORTION PER GREEN BOOK.
- 5 BUILD MANHOLES TO PROPOSED FUTURE GRADE AND ADD GRADE RINGS TO ADJUST MANHOLE FRAME AND COVERS TO MEET EXISTING GRADE, WHERE THE EXISTING AND PROPOSED GRADE DIFFERS AS SHOWN ON THE PLANS.



BENCHMARK
P.I. NAIL AND CITY ENGINEER TAG IN THE BACK OF A CATCH BASIN ALONG THE W/LY CURB OF ORANGE ST. AT THE SW/LY CORNER OF ORANGE ST. & THIRD ST.
ELEVATION 852.637'

IMPORTANT NOTICE
Section 4216/4217 of the Government Code requires a Dig Alert identification Number to be placed before a "Hazard" Excavation will be made. Underground Service Alert TOLL FREE 1-800-122-4133 Two working days before you dig.

ENGINEER IN RESPONSIBLE CHARGE
LONNY LEW YOUNG
R.C.E. No. 43216 expires 3/31/08
DATE 10/11/2007



Added abandoned water mains
Adjusted Sta. & Elev. per Survey

CITY OF RIVERSIDE, CALIFORNIA
PUBLIC WORKS DEPARTMENT

APPROVED BY	BY	DATE	APPROVED BY	BY	DATE
PRINCIPAL ENGINEER	[Signature]	10/11/07	CITY ENGINEER	[Signature]	10/11/07
SURVEYOR	[Signature]	10/11/07			
TRAFFIC DIVISION	[Signature]	10/11/07			

MISSION INN AVENUE SEWER MAIN REPLACEMENT BETWEEN FAIRMOUNT BOULEVARD AND SANTA FE AVE.
STA. 32+00 TO 37+13.89

ACCT. NO. 981162303
S-2037
SHEET 6 OF 6
FILE NO.