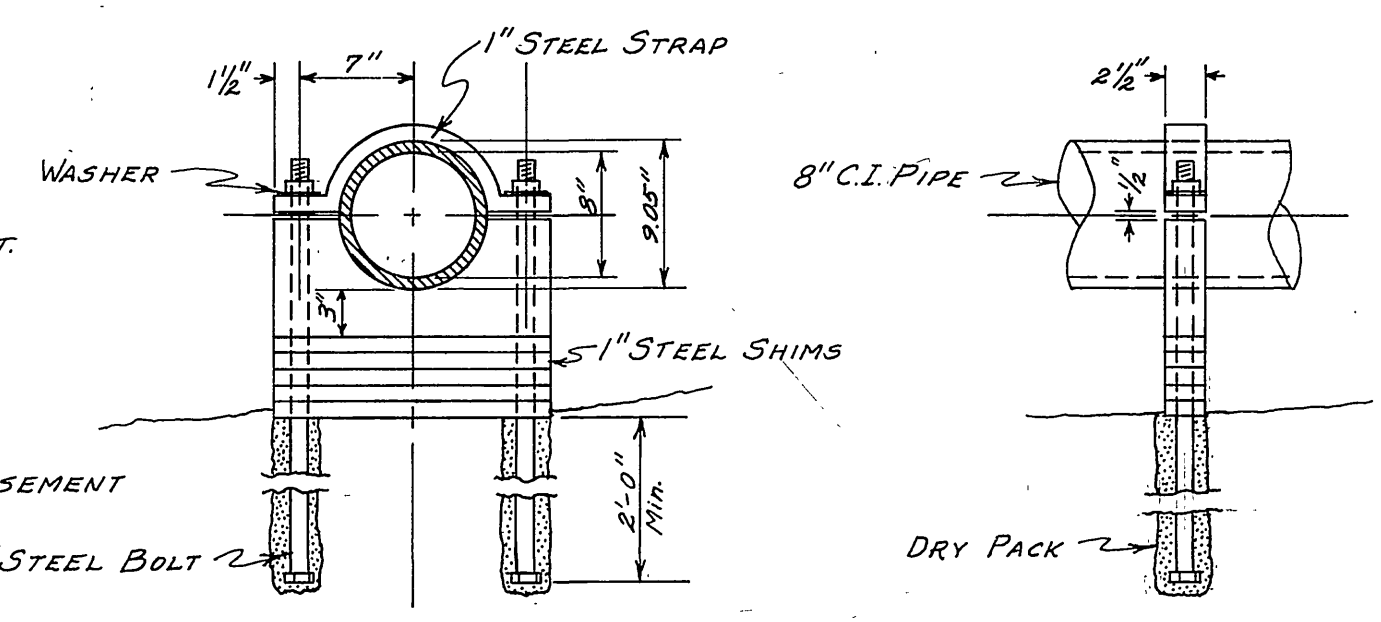
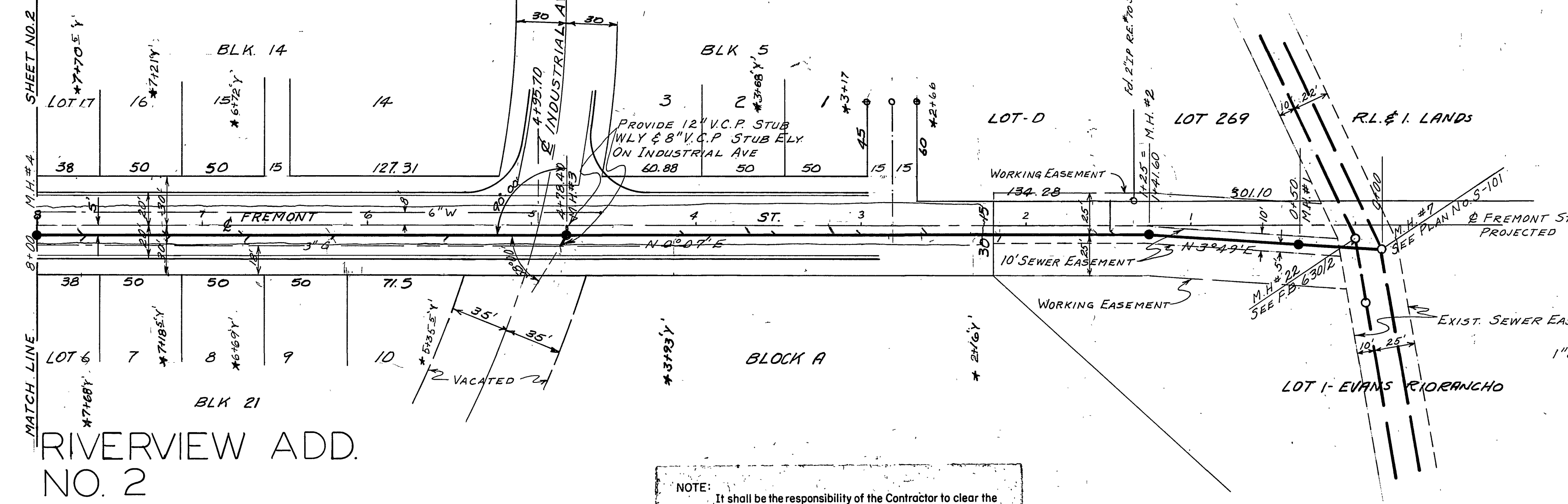


B.M. ELEV. = 726.85 NORTH RIM OF MANHOLE NO. 21 - F.B. 622/67
 F.B. "T"/1-9
 SCALES: 1" = 50' HORIZ. (EXCEPT AS NOTED)
 1" = 10' VERT.

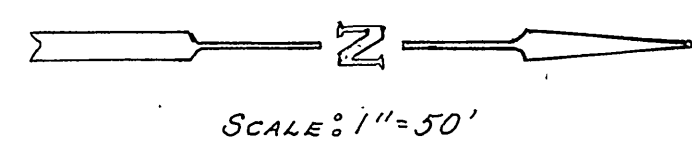
RIVERVIEW ADDITION NO. 3



PIPE ANCHOR DETAIL
 SCALE: 1" = 1'-0"

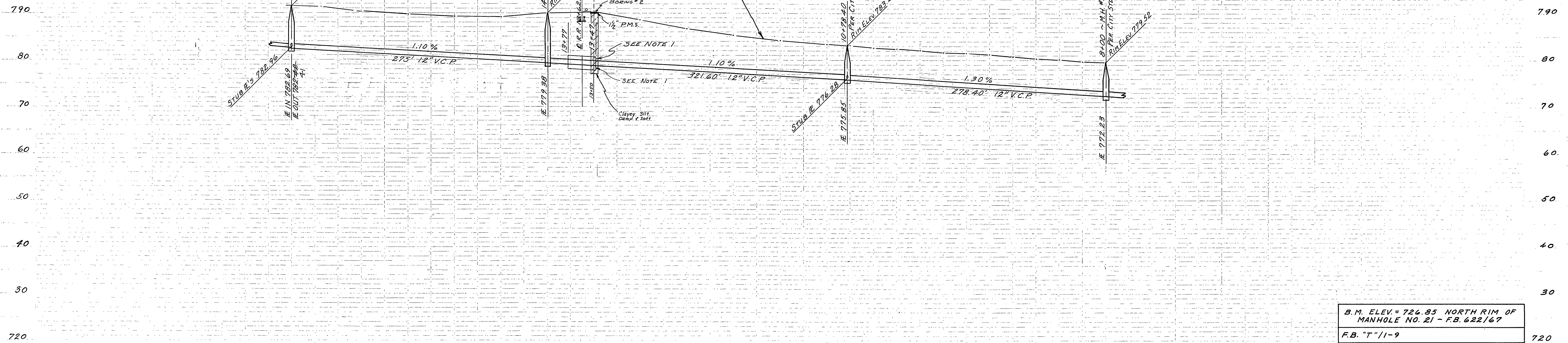
NOTE: It shall be the responsibility of the Contractor to clear the right of way in accordance with the provisions of the law as it affects each utility including irrigation lines and appurtenances and at no extra cost to the City.

- NOTE:
1. ALL PIPE FROM STA. 0+00 TO 0+50 SHALL BE 8" I.D. CAST IRON CLASS 150 - A.S.A. 21.6
 2. ALL JOINTS SHALL BE MECHANICAL PER A.S.A. 21.11
 3. FITTINGS SHALL CONFORM TO A.S.A. 21.10
 4. EXACT NUMBER AND LOCATION OF WYES TO BE DETERMINED IN THE FIELD.
 5. MAXIMUM VERTICAL LADDER RUNG SPACING IN MANHOLES SHALL BE 12"
 6. BORINGS WERE TAKEN NOVEMBER 14, 1960.

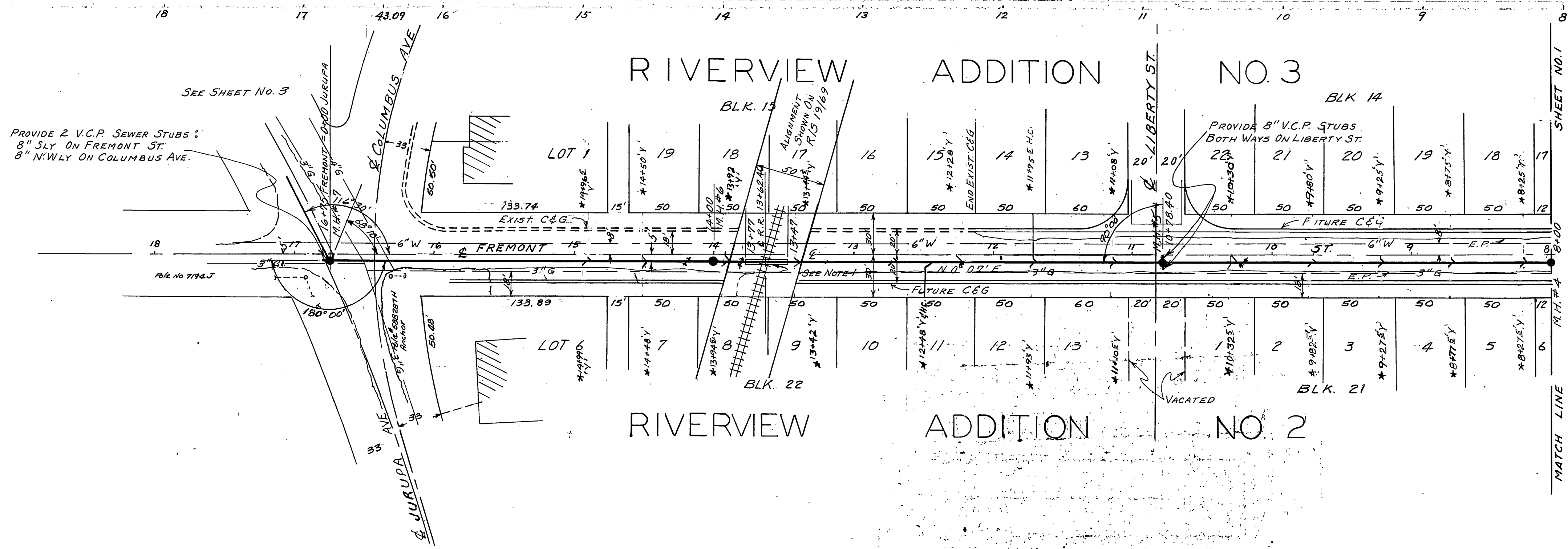


REVISIONS		CITY OF RIVERSIDE CALIFORNIA DEPARTMENT OF PUBLIC WORKS
MARK	DATE	
		FREMONT ST. SEWER EXT. SANTA ANA OUTFALL TO JURUPA AVENUE
DESIGNED BY L.P.	CHECKED BY <i>WWS</i>	APPROVED BY <i>Malet</i>
DRAWN BY A.R.C.-RJA		DIRECTOR OF PUBLIC WORKS
		April 29, 1960

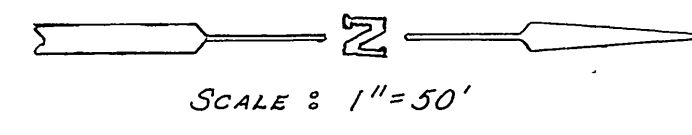
5-204



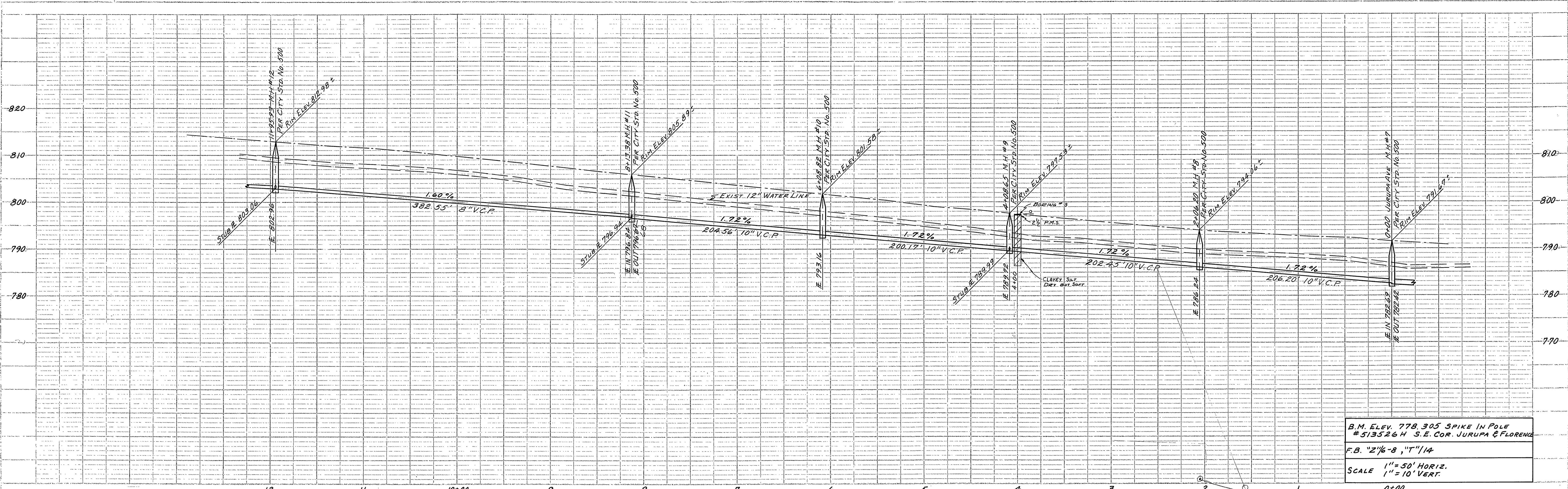
B.M. ELEV. = 726.85 NORTH RIM OF
MANHOLE NO. 21 - F.B. 622/67
F.B. "T"/1-9
SCALES: 1" = 50' HORIZ.
1" = 10' VERT.



NOTES:
TUNNEL UNDER EXISTING TRACK. ENCASE SEWER PER STD. DWG. NO. 580. COMPACT OVER ENCASMENT TO 95% RELATIVE COMPACTION BY MEANS OF PNEUMATIC TAMPING.



REVISIONS		CITY OF RIVERSIDE CALIFORNIA DEPARTMENT OF PUBLIC WORKS
MARK	DATE	
DESIGNED BY L.P.		APPROVED BY <i>[Signature]</i> DIRECTOR OF PUBLIC WORKS
BY H.R.C.-RJA L.P.		
RECOMMENDED BY <i>[Signature]</i>		DATE April 28, 1960

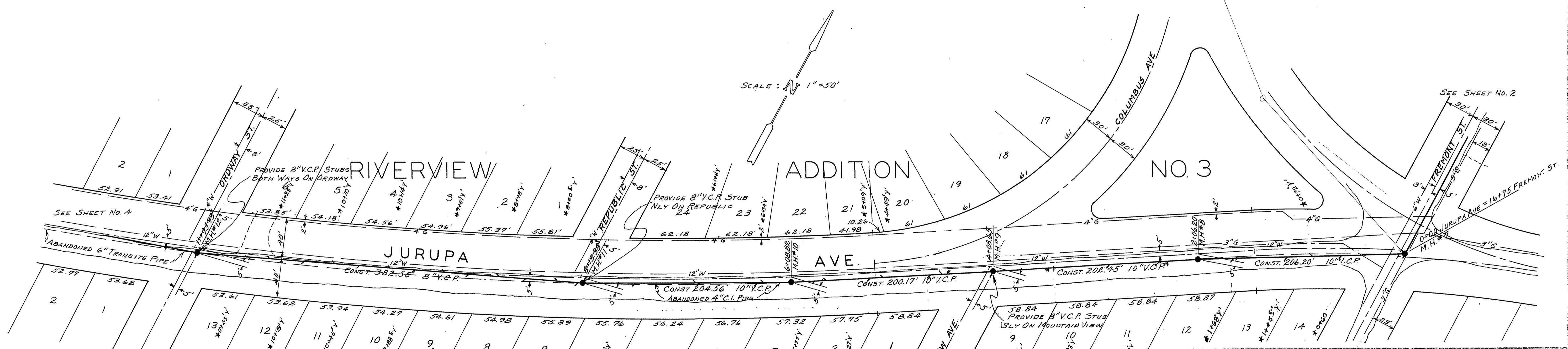


B.M. ELEV. 778.305 SPIKE IN POLE
#513526 H S.E. COR. JURUPA & FLORENCE

F.B. "2 1/8" - 8, "T" / 14

SCALE 1" = 50' HORIZ.
1" = 10' VERT.

PROFILE SHEET NO. 1
NOTE: ELEVATIONS CHECKED BY S.M. & P.T.C.B.
DRAWN BY J. J. WILSON

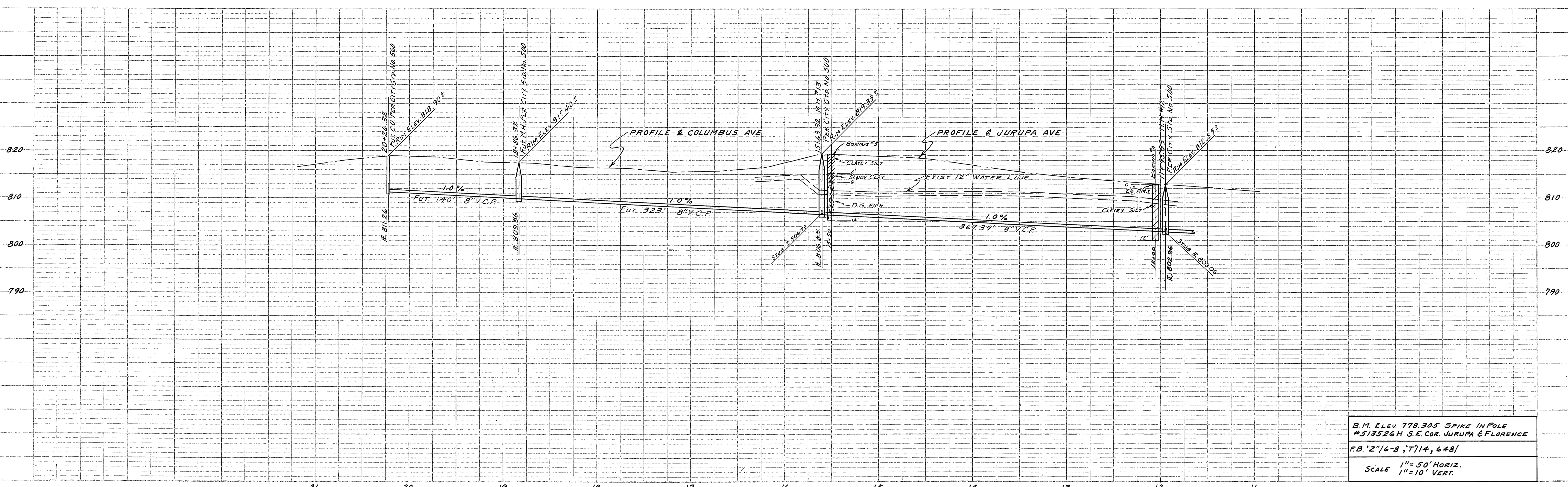


REVISIONS		CITY OF RIVERSIDE CALIFORNIA DEPARTMENT OF PUBLIC WORKS
MARK	DATE	
		FREMONT ST. SEWER EXT.
		JURUPA AVENUE FREMONT ST. TO ORDWAY ST.
DESIGNED BY L.P.	CHECKED BY W.D.G.	APPROVED BY <i>[Signature]</i> DIRECTOR OF PUBLIC WORKS
		April 28, 1960

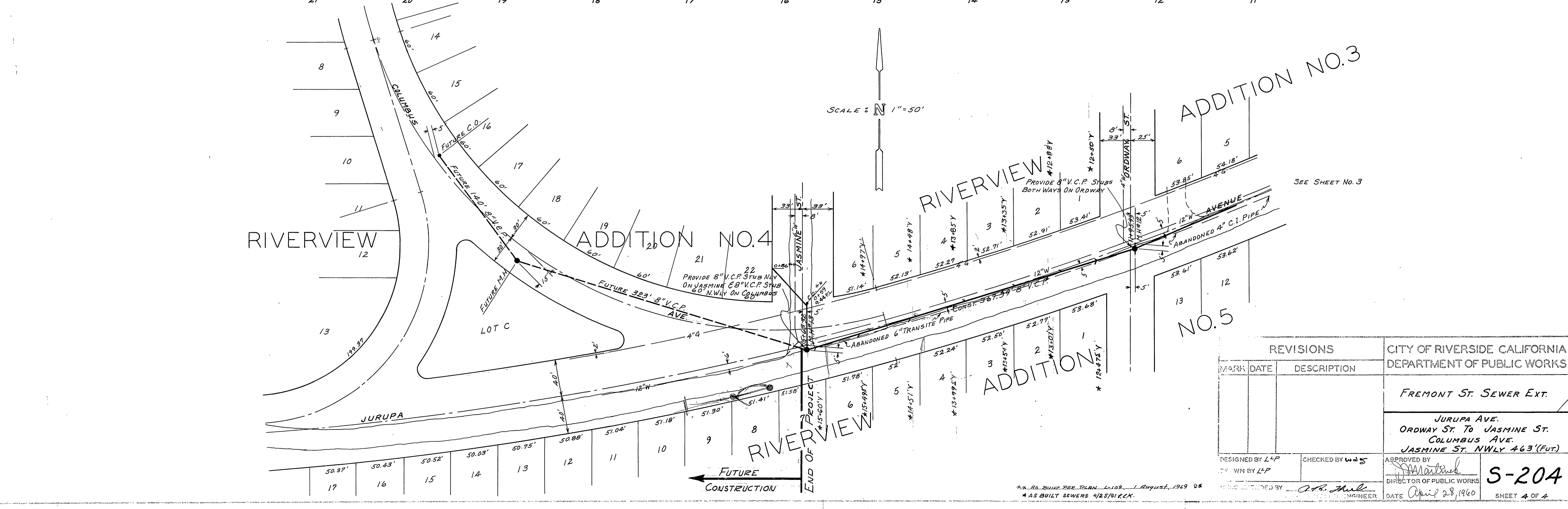
S-204

*AS BUILT SEWERS 4/25/61 F.E.K

SEE SHEET NO. 2
SEE SHEET NO. 4
SEE SHEET NO. 5
SEE SHEET NO. 6
SEE SHEET NO. 7
SEE SHEET NO. 8
SEE SHEET NO. 9
SEE SHEET NO. 10
SEE SHEET NO. 11
SEE SHEET NO. 12
SEE SHEET NO. 13
SEE SHEET NO. 14
SEE SHEET NO. 15
SEE SHEET NO. 16
SEE SHEET NO. 17
SEE SHEET NO. 18
SEE SHEET NO. 19
SEE SHEET NO. 20
SEE SHEET NO. 21
SEE SHEET NO. 22
SEE SHEET NO. 23
SEE SHEET NO. 24
SEE SHEET NO. 25
SEE SHEET NO. 26
SEE SHEET NO. 27
SEE SHEET NO. 28
SEE SHEET NO. 29
SEE SHEET NO. 30
SEE SHEET NO. 31
SEE SHEET NO. 32
SEE SHEET NO. 33
SEE SHEET NO. 34
SEE SHEET NO. 35
SEE SHEET NO. 36
SEE SHEET NO. 37
SEE SHEET NO. 38
SEE SHEET NO. 39
SEE SHEET NO. 40
SEE SHEET NO. 41
SEE SHEET NO. 42
SEE SHEET NO. 43
SEE SHEET NO. 44
SEE SHEET NO. 45
SEE SHEET NO. 46
SEE SHEET NO. 47
SEE SHEET NO. 48
SEE SHEET NO. 49
SEE SHEET NO. 50
SEE SHEET NO. 51
SEE SHEET NO. 52
SEE SHEET NO. 53
SEE SHEET NO. 54
SEE SHEET NO. 55
SEE SHEET NO. 56
SEE SHEET NO. 57
SEE SHEET NO. 58
SEE SHEET NO. 59
SEE SHEET NO. 60
SEE SHEET NO. 61
SEE SHEET NO. 62
SEE SHEET NO. 63
SEE SHEET NO. 64
SEE SHEET NO. 65
SEE SHEET NO. 66
SEE SHEET NO. 67
SEE SHEET NO. 68
SEE SHEET NO. 69
SEE SHEET NO. 70
SEE SHEET NO. 71
SEE SHEET NO. 72
SEE SHEET NO. 73
SEE SHEET NO. 74
SEE SHEET NO. 75
SEE SHEET NO. 76
SEE SHEET NO. 77
SEE SHEET NO. 78
SEE SHEET NO. 79
SEE SHEET NO. 80
SEE SHEET NO. 81
SEE SHEET NO. 82
SEE SHEET NO. 83
SEE SHEET NO. 84
SEE SHEET NO. 85
SEE SHEET NO. 86
SEE SHEET NO. 87
SEE SHEET NO. 88
SEE SHEET NO. 89
SEE SHEET NO. 90
SEE SHEET NO. 91
SEE SHEET NO. 92
SEE SHEET NO. 93
SEE SHEET NO. 94
SEE SHEET NO. 95
SEE SHEET NO. 96
SEE SHEET NO. 97
SEE SHEET NO. 98
SEE SHEET NO. 99
SEE SHEET NO. 100



B.M. ELEV. 778.305 SPIKE IN POLE
 #513526 H S.E. COR. JURUPA & FLORENCE
 F.B. "2"16-8, "7"14, 648/
 SCALE 1"=50' HORIZ.
 1"=10' VERT.



REVISIONS		CITY OF RIVERSIDE CALIFORNIA DEPARTMENT OF PUBLIC WORKS	
MARK	DATE	DESCRIPTION	
			FREMONT ST. SEWER EXT.
			JURUPA AVE. ORDWAY ST. TO JASMINE ST. COLUMBUS AVE. JASMINE ST. NWLY 463'(FUT.)
DESIGNED BY	L.P.	CHECKED BY	W.D.S.
DRAWN BY	L.P.	APPROVED BY	<i>[Signature]</i>
DATE	April 28, 1966	DIRECTOR OF PUBLIC WORKS	
		ENGINEER	

** R.S. BUILT PER PLAN L-119 August, 1969 DS
 * AS BUILT SEWERS 4/25/91 R.C.K.

S-204
 SHEET 4 OF 4