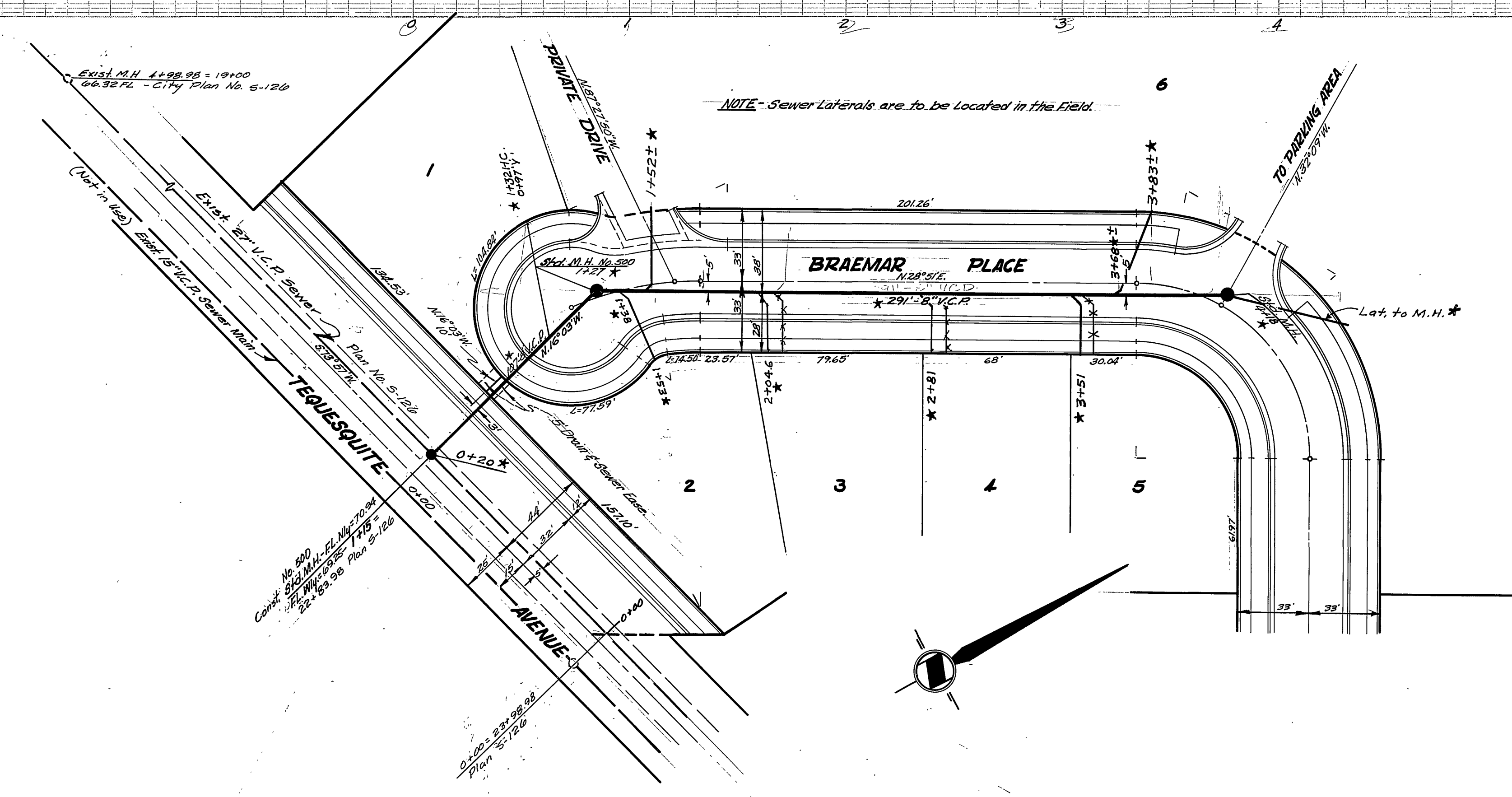
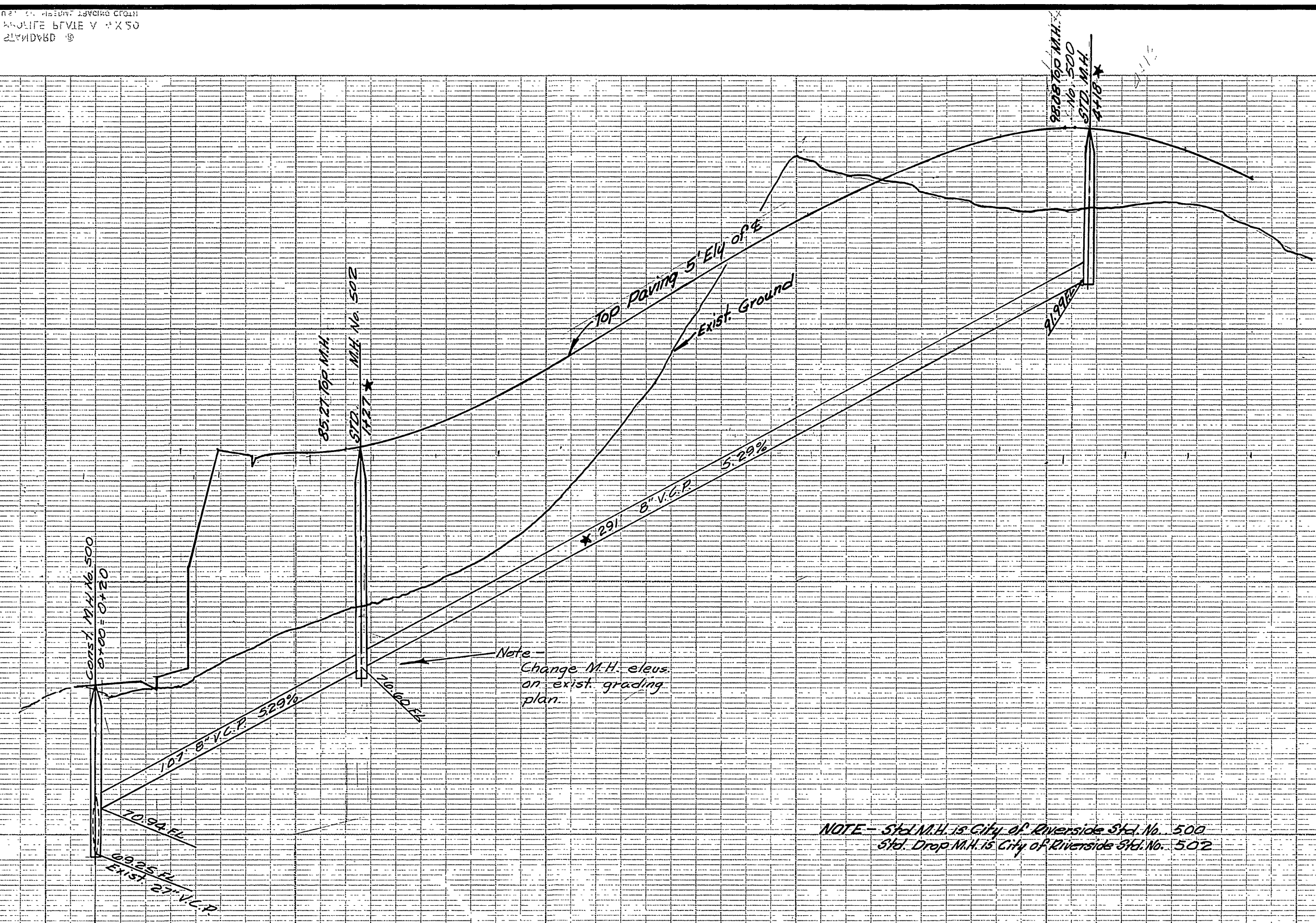


Elev. 790'

Elev. 780'

Elev. 770'



CITY BENCH MARK - Spike in Guy Pole No. R3093T at bend in Tequesquite Ave. Elev. 782.40

F.B. 512, 608
J.F. DAVIDSON - CIVIL ENGINEER
R.E. No. 862
RIVERSIDE, CALIFORNIA
APPROVED BY: [Signature] DATE 1/11/59
CITY OF RIVERSIDE, CALIFORNIA
DEPARTMENT OF PUBLIC WORKS
SEWER PLAN & PROFILE
BRAEMAR PLACE
BRAEMAR TERRACE
HORIZ. SCALE 1"=40' VERT. SCALE 1"=4'
APPROVED BY: [Signature]
Director of Public Works
DATE Jan 9, 1960
NO. S-206