

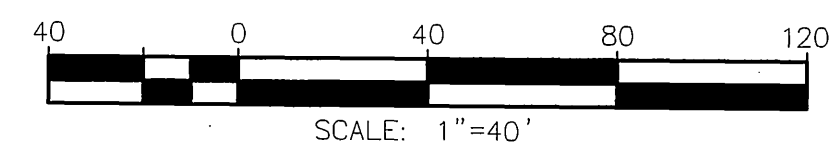
**TRAFFIC CONTROL GENERAL NOTES:**

- ALL TRAFFIC CONTROL FOR CONSTRUCTION SHALL CONFORM TO THE CALIFORNIA MANUAL ON UNIFORM TRAFFIC CONTROL DEVICES (CA MUTCD) ADOPTED SEPTEMBER 2006, CALTRANS SPECIFICATIONS AND STANDARD PLANS, DATED MAY 2006, AND THE SPECIAL PROVISIONS.  
LANE CLOSURES SHALL BE AS SHOWN ON THE PLANS OR AS DIRECTED BY THE ENGINEER.
- ANY PAVEMENT MARKINGS AND STRIPING DAMAGED AND/OR BADLY WORN DURING CONSTRUCTION SHALL BE RESTORED BY THE CONTRACTOR. ALL EXISTING FACILITIES INCLUDING SIGNING, STRIPING, MARKINGS, MARKERS AND SIGNAL SHALL BE RESTORED TO THE ORIGINAL CONDITION AND/OR LOCATION AT THE END OF EACH CONSTRUCTION PERIOD FOR EACH STAGE.
- IT IS THE RESPONSIBILITY OF THE CONTRACTOR PERFORMING WORK ON A PUBLIC STREET TO INSTALL AND MAINTAIN TRAFFIC CONTROL DEVICES AS SHOWN HEREON, AS WELL AS ANY SUCH ADDITIONAL DEVICES AS MAY BE REQUIRED TO INSURE THE SAFE MOVEMENT OF TRAFFIC AND PEDESTRIANS THROUGH OR AROUND THE WORK AREA. ALL TRAFFIC CONTROL DEVICES SHALL BE KEPT IN THEIR PROPER POSITION AT ALL TIMES, AND SHALL BE REPAIRED, REPLACED OR CLEANED AS NECESSARY TO PRESERVE THEIR APPEARANCE AND CONTINUITY.
- A MINIMUM OF FIVE FEET OF CLEARANCE SHALL BE MAINTAINED BETWEEN ANY OPEN EXCAVATION AND THE ADJACENT MOVING TRAFFIC LANE. NO OPEN TRENCH ADJACENT TO A TRAFFIC LANE SHALL EXCEED 300 FEET. TEMPORARY CONCRETE BARRIER (TYPE K PER CALTRANS STANDARD PLAN T-3) SHALL BE USED WHENEVER SHOWN ON THE PLANS. THE C27(CA) "OPEN TRENCH" SIGN SHALL BE UTILIZED WHENEVER AN OPEN EXCAVATION AREA EXISTS ADJACENT TO THE TRAVEL WAY.
- THE CONTRACTOR SHALL COORDINATE THE RELOCATION OF THE BUS ROUTES AND BUS STOPS WITH SAM WATTANACHINDA, RIVERSIDE TRANSIT AGENCY AT (951) 565-5122 THREE WEEKS IN ADVANCE OF CONSTRUCTION ACTIVITY AFFECTING BUS STOPS.
- THE CONTRACTOR SHALL PROVIDE A SAFE AND CONTINUOUS PASSAGE OF LOCAL PEDESTRIAN AND VEHICULAR TRAFFIC AT ALL TIMES.
- EXACT LOCATION AND TYPE OF CONSTRUCTION SIGNS(S) SHALL BE AS DIRECTED BY THE ENGINEER BASED ON TRAFFIC CONDITIONS.
- TRAFFIC CONES FOR NIGHTTIME USE SHALL BE INTERNALLY ILLUMINATED OR BE PROVIDED WITH 13" REFLECTIVE SILVER SLEEVE.
- WHERE PRACTICAL, CONTRACTOR SHALL REMOVE ALL TRAFFIC CONTROL AND TEMPORARY SIGNING UPON COMPLETION OF DAILY CONSTRUCTION, AND RESTORE SIGNING AND STRIPING, TO CONDITIONS SHOWN AS EXISTING.
- SEE CALTRANS STANDARD PLANS A20A THRU A20D & A24A THRU A24E FOR STRIPING DETAILS. SEE CALTRANS STANDARD PLANS T1A, T1B, & T2 FOR TEMPORARY CRASH CUSHION ARRAYS.
- TRAFFIC CONTROL CHANNELIZERS SHALL BE EPOXIED TO THE PAVEMENT. TRAFFIC CONTROL CONES WITH DOUBLE BASES MAY BE USED IN LIEU OF CHANNELIZERS FOR DAILY SHORT TERM (ONE WEEK MAXIMUM) CONSTRUCTION ACTIVITIES.
- A TRAFFIC CONTROL PERMIT MUST BE OBTAINED BY THE CONTRACTOR AT LEAST 48 HOURS PRIOR TO BEGINNING WORK.
- CONSTRUCTION ACTIVITY WITHIN THE TRAVEL WAY SHALL BE LIMITED TO THE HOURS INDICATED IN THE SPECIAL PROVISIONS. ALL EXCAVATIONS WITHIN THIS AREA SHALL BE COVERED WITH STEEL PLATES DURING NON-WORKING HOURS. SEE SPECIAL PROVISIONS FOR THE MINIMUM NUMBER OF LANES TO BE MAINTAINED OPEN. LEFT TURNS MAY BE PROHIBITED DURING INTERSECTION CONSTRUCTION AS DIRECTED BY THE ENGINEER.

- THESE TRAFFIC CONTROL PLANS SHOW TRAFFIC CONTROL DEVICES FOR LONG TERM TRAFFIC CONTROL FOR CONSTRUCTION LIMITS SHOWN. IT IS THE CONTRACTOR'S RESPONSIBILITY TO CONFORM TO SHORT TERM TRAFFIC CONTROL REQUIREMENTS IN ACCORDANCE WITH CALTRANS "MANUAL OF UNIFORM TRAFFIC CONTROLS". SHORT TERM TRAFFIC CONTROL AND CHANGES TO THESE PLANS DURING CONSTRUCTION SHALL BE SUBMITTED FOR REVIEW AND APPROVAL BY THE CITY OF RIVERSIDE TRAFFIC ENGINEERING DIVISION.
- USE AND PLACEMENT OF FLASHING ARROW BOARD SIGN(S) SHALL BE AS DIRECTED BY THE ENGINEER. ALL TRAFFIC TRANSITIONS SHALL UTILIZE ARROW BOARDS.
- FLASHING BEACONS AND/OR WARNING LIGHTS SHALL BE USED WHERE DIRECTED BY THE ENGINEER.
- CONTRACTOR MAY USE PREFABRICATED REMOVABLE DETOUR STRIPING TAPE, PAVEMENT MARKINGS AND RAISED MARKERS WHERE SHORT TERM USE WILL OCCUR (24 HOURS OR LESS), OR AS SHOWN ON THE PLANS.
- STEEL PLATES OR A MINIMUM OF 4:1 SLOPE SHALL BE MAINTAINED FOR OPEN EXCAVATIONS DURING NON-WORKING HOURS. "STEEL PLATES AHEAD" SIGNS SHALL BE PROVIDED AT ALL TIMES.
- ALL CONFLICTING STRIPING, PAVEMENT MARKINGS, AND CURB PAINT SHALL BE REMOVED BY SANDBLASTING, BLACK-OUT METHOD IS NOT PERMITTED. ALL CONFLICTING RAISED PAVEMENT MARKERS SHALL BE REMOVED.
- CONTRACTOR SHALL MAINTAIN ROADWAY SURFACE IN OPERABLE DRIVING CONDITION AT ALL TIMES. TEMPORARY A.C. PAVEMENT MAY BE REQUIRED IN ORDER TO MAINTAIN TEMPORARY LANES IN ACCEPTABLE CONDITION.
- TYPE II BARRICADE MOUNTED FLASHING YELLOW LIGHTS SHALL BE PLACED ON TYPE II BARRICADES AT 200' SPACING AS SHOWN ON THE "TYPICAL CHANNELIZER DETAIL" OR AS DIRECTED BY THE ENGINEER.
- CONTRACTOR SHALL REMOVE OR COVER ALL CONFLICTING SIGNS INCLUDING SIGNS ON THE TRAFFIC SIGNAL MAST ARMS.
- ONLY ONE STAGE MAY BE DONE AT A TIME. COMPLETE ONE STAGE BEFORE STARTING THE NEXT.
- CONTRACTOR SHALL COORDINATE WITH THE CITY OF RIVERSIDE TRAFFIC ENGINEERING DEPARTMENT AT (951) 826-6098 A MINIMUM OF FIVE (5) WORKING DAYS PRIOR TO WORK AFFECTING ANY TRAFFIC SIGNAL WITHIN CONSTRUCTION AREA. CONTACT CITY OF RIVERSIDE TRAFFIC ENGINEERING DEPARTMENT FOR TRAFFIC SIGNAL OPERATIONAL CHANGES WHEN TRAFFIC LOOPS ARE DAMAGED OR FOR TRAFFIC CONTROL CONDITIONS NOTED ON THE PLANS.
- CONTRACTOR SHALL REPLACE ALL CONTRACTOR DAMAGED TRAFFIC FACILITIES INCLUDING CONDUIT, CONDUCTORS, PULL BOXES AND LOOP DETECTORS. AT LOCATIONS WHERE THE EXISTING LOOP DETECTORS WILL BE AFFECTED OR DAMAGED BY THE PROPOSED WORK, LOOPS SHALL BE REPLACED WITHIN FIVE (5) WORKING DAYS OR AS DETERMINED BY THE ENGINEER. IN LIEU OF INSTALLING TEMPORARY LOOP DETECTORS, CONTRACTOR MAY PROVIDE AND INSTALL TEMPORARY VIDEO DETECTION SYSTEM FOR THE DURATION OF CONSTRUCTION. VIDEO DETECTION SYSTEM SHALL BE COMPATIBLE WITH THE CITY'S TRAFFIC SIGNAL SYSTEM.

**LEGENDS AND CONSTRUCTION NOTES:**

- E EXISTING TO REMAIN.
- 1 PROVIDE TEMPORARY STRIPING, CONSTRUCTION SIGNS, BARRICADES, CONES, FLASHING ARROW SIGNS, TEMPORARY K-RAIL, OR TEMPORARY CRASH CUSHION MODULES (ARRAY PER PLAN).
- 2 CONSTRUCTION WITHIN THE TRAVEL LANE SHALL BE COMPLETED ON A DAILY BASIS. ACCESS SHALL BE MAINTAINED AT ALL TIMES UNLESS APPROVED OTHERWISE.
- 3 ONE TRAFFIC LANE (12' MIN.) SHALL BE MAINTAINED AT ALL TIMES DURING CONSTRUCTION, UNLESS OTHERWISE NOTED.
- 4 MAINTAIN PEDESTRIAN ACCESS UNLESS APPROVED OTHERWISE BY ENGINEER.
- 5 PROVIDE ACCESS FOR PEDESTRIAN CROSSING.
- PM INSTALL PAVEMENT MARKING OR ARROW AS NOTED.
- RP REMOVE ALL EXISTING CONFLICTING TRAFFIC STRIPING AND MARKINGS AS NOTED, INCLUDING RAISED PAVEMENT MARKERS.
- RS REMOVE AND SALVAGE SIGN(S) AND/OR POST(S) (IF APPLICABLE) AS NOTED.
- RL RELOCATE EXISTING SIGN(S) TO NEW POST (IF APPLICABLE) AS NOTED.
- # INSTALL CALTRANS STRIPING DETAIL PER NUMBER NOTED, INCLUDING INSTALLATION OF RAISED PAVEMENT MARKERS.
- S EXISTING SIGNALIZED INTERSECTION
- TYPE II BARRICADE WITH FLASHING YELLOW BARRICADE LIGHT AND SIGN AS NOTED ON PLAN
- TYPE III BARRICADE WITH SIGN AS NOTED ON PLAN
- SIGN AS NOTED ON PLAN
- CHANNELIZER OR CONSTRUCTION CONE
- FAS SOLAR/BATTERY POWERED FLASHING ARROW SIGN (FAS)
- DIRECTION OF TRAVEL
- ROADWAY CONSTRUCTION AREA



Under Ground  
Service Alert  
of Southern California  
Call: TOLL FREE  
1-800  
227-2600  
**TWO WORKING DAYS BEFORE YOU DIG**

**ENGINEER IN RESPONSIBLE CHARGE**  
*Gilbert M. Hernandez*  
GILBERT M. HERNANDEZ  
R.C.E. No. 69170 EXPIRES: 6-30-10  
DATE: 4-27-10

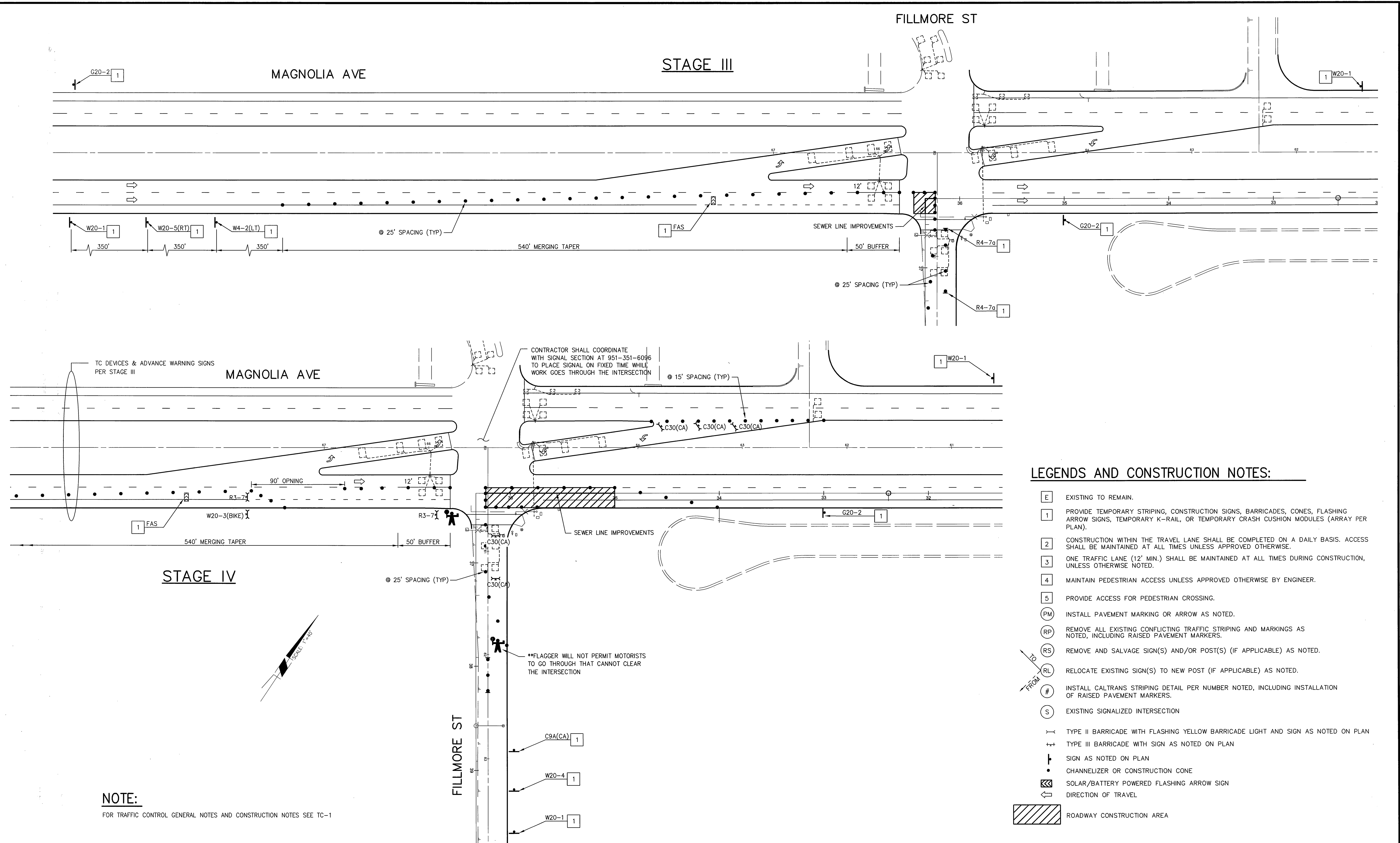
MARK	REVISIONS	APPR.	DATE

**CITY OF RIVERSIDE, CALIFORNIA  
DEPARTMENT OF PUBLIC WORKS**

APPROVED BY:	BY:	DATE:	APPROVED BY:
ENGINEERING MANAGER	<i>DA</i>	5/23/10	<i>[Signature]</i>
PRINCIPAL ENGINEER	<i>[Signature]</i>	5/21/2010	CITY ENGINEER
TRAFFIC DIVISION			
CONSTRUCTION ADMIN.			
PUBLIC UTILITIES			

**TRAFFIC CONTROL PLAN  
MAGNOLIA-FILLMORE-GOLDEN SEWER  
FROM SR-91 TO CHOCHARN AVE  
STAGE I AND II**

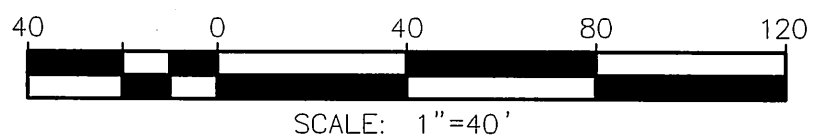
TC-1  
SHEET 1 OF 5  
SCALE: 1" = 40'  
FILE NAME: TC-1.DWG



**LEGENDS AND CONSTRUCTION NOTES:**

- [E] EXISTING TO REMAIN.
- [1] PROVIDE TEMPORARY STRIPING, CONSTRUCTION SIGNS, BARRICADES, CONES, FLASHING ARROW SIGNS, TEMPORARY K-RAIL, OR TEMPORARY CRASH CUSHION MODULES (ARRAY PER PLAN).
- [2] CONSTRUCTION WITHIN THE TRAVEL LANE SHALL BE COMPLETED ON A DAILY BASIS. ACCESS SHALL BE MAINTAINED AT ALL TIMES UNLESS APPROVED OTHERWISE.
- [3] ONE TRAFFIC LANE (12' MIN.) SHALL BE MAINTAINED AT ALL TIMES DURING CONSTRUCTION, UNLESS OTHERWISE NOTED.
- [4] MAINTAIN PEDESTRIAN ACCESS UNLESS APPROVED OTHERWISE BY ENGINEER.
- [5] PROVIDE ACCESS FOR PEDESTRIAN CROSSING.
- (PM) INSTALL PAVEMENT MARKING OR ARROW AS NOTED.
- (RP) REMOVE ALL EXISTING CONFLICTING TRAFFIC STRIPING AND MARKINGS AS NOTED, INCLUDING RAISED PAVEMENT MARKERS.
- (RS) REMOVE AND SALVAGE SIGN(S) AND/OR POST(S) (IF APPLICABLE) AS NOTED.
- (RL) RELOCATE EXISTING SIGN(S) TO NEW POST (IF APPLICABLE) AS NOTED.
- # INSTALL CALTRANS STRIPING DETAIL PER NUMBER NOTED, INCLUDING INSTALLATION OF RAISED PAVEMENT MARKERS.
- (S) EXISTING SIGNALIZED INTERSECTION
- TYPE II BARRICADE WITH FLASHING YELLOW BARRICADE LIGHT AND SIGN AS NOTED ON PLAN
- +++ TYPE III BARRICADE WITH SIGN AS NOTED ON PLAN
- ⊥ SIGN AS NOTED ON PLAN
- CHANNELIZER OR CONSTRUCTION CONE
- ☒ SOLAR/BATTERY POWERED FLASHING ARROW SIGN
- ← DIRECTION OF TRAVEL
- ▨ ROADWAY CONSTRUCTION AREA

**NOTE:**  
FOR TRAFFIC CONTROL GENERAL NOTES AND CONSTRUCTION NOTES SEE TC-1



Under Ground Service Alert of Southern California  
Call: TOLL FREE 1-800-227-2600  
**TWO WORKING DAYS BEFORE YOU DIG**

**ENGINEER IN RESPONSIBLE CHARGE**  
GILBERT M. HERNANDEZ  
R.C.E. No. 69170 EXPIRES: 6-30-10  
DATE: 4-27-10

MARK	REVISIONS	APPR.	DATE

**CITY OF RIVERSIDE, CALIFORNIA  
DEPARTMENT OF PUBLIC WORKS**

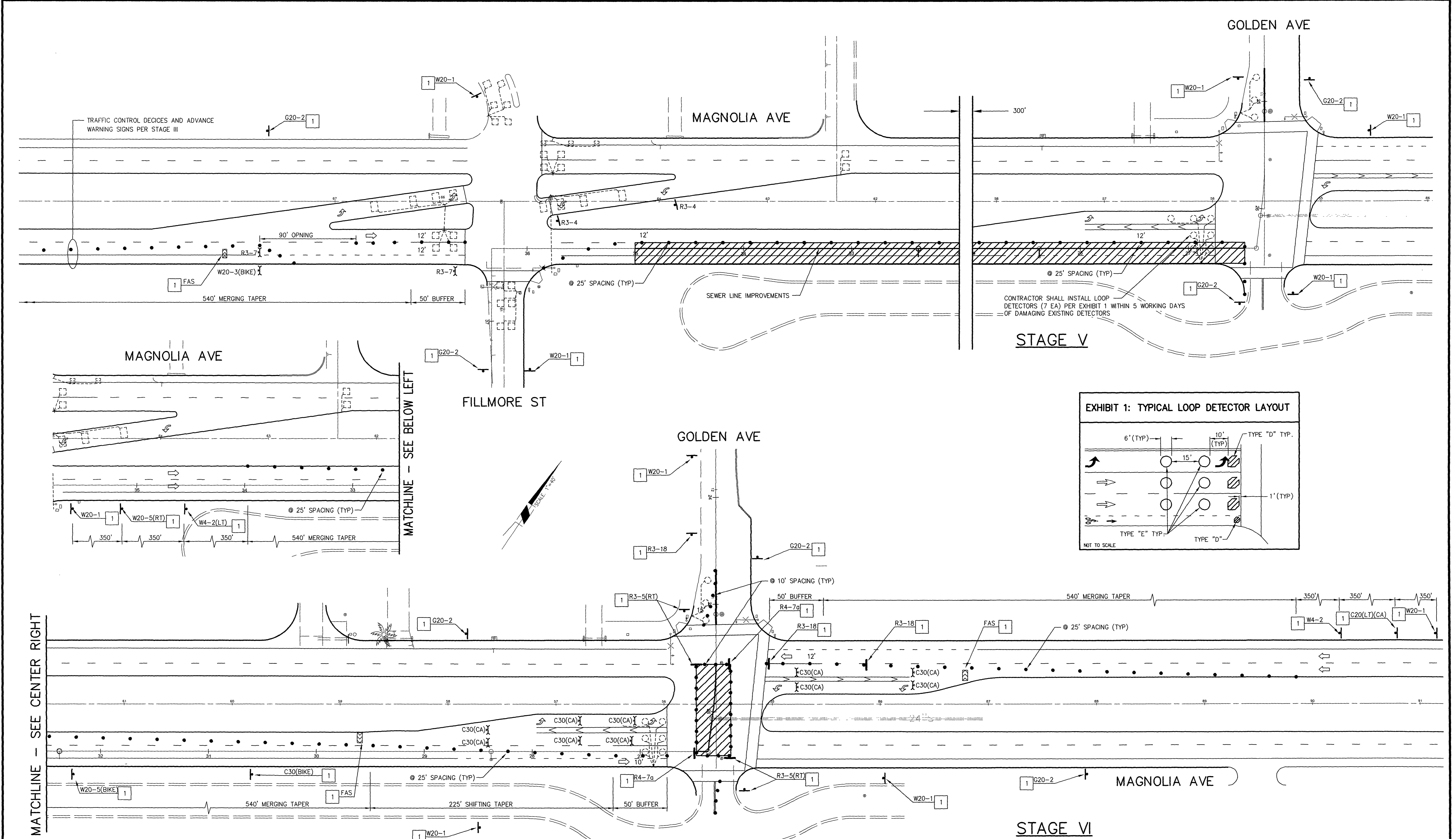
APPROVED BY	BY	DATE	APPROVED BY
ENGINEERING MANAGER	DH	5/25/10	CITY ENGINEER
PRINCIPAL ENGINEER	AM	5/21/2010	
TRAFFIC DIVISION			
CONSTRUCTION ADMIN.			
PUBLIC UTILITIES			

DESIGNED BY: CMH    DRAWN BY: CMH    CHECKED BY: CMH

**TRAFFIC CONTROL PLAN  
MAGNOLIA-FILLMORE-GOLDEN SEWER  
FROM SR-91 TO CHOCHARN AVE  
STAGES III AND IV**

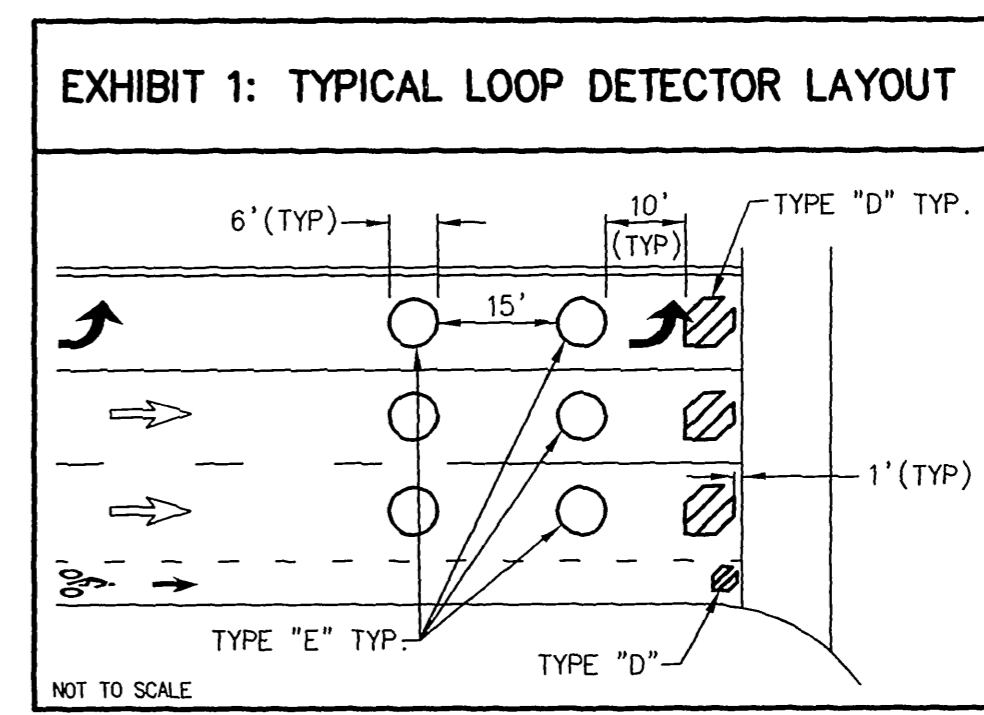
SCALE: 1" = 40'

**TC-2**  
SHEET 2 OF 5  
FILE NAME: TC-2.DWG

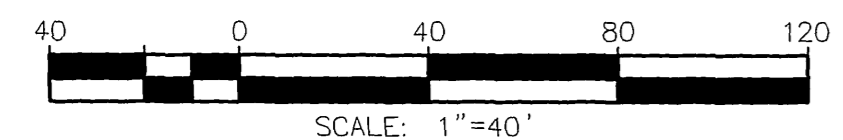


STAGE V

STAGE VI



**NOTE:**  
FOR TRAFFIC CONTROL GENERAL NOTES, CONSTRUCTION NOTES AND LEGEND SEE TC-1



**ENGINEER IN RESPONSIBLE CHARGE**

GILBERT M. HERNANDEZ  
R.C.E. No. 69170 EXPIRES: 6-30-10  
DATE: 4-27-10

MARK	REVISIONS	APPR.	DATE

**CITY OF RIVERSIDE, CALIFORNIA**  
**DEPARTMENT OF PUBLIC WORKS**

APPROVED BY	BY	DATE	APPROVED BY
ENGINEERING MANAGER	GH	5/15/10	CITY ENGINEER
PRINCIPAL ENGINEER	GH	5/21/2010	CITY ENGINEER
TRAFFIC DIVISION			
CONSTRUCTION ADMIN.			
PUBLIC UTILITIES			

DESIGNED BY: GMH DRAWN BY: GMH CHECKED BY: GMH

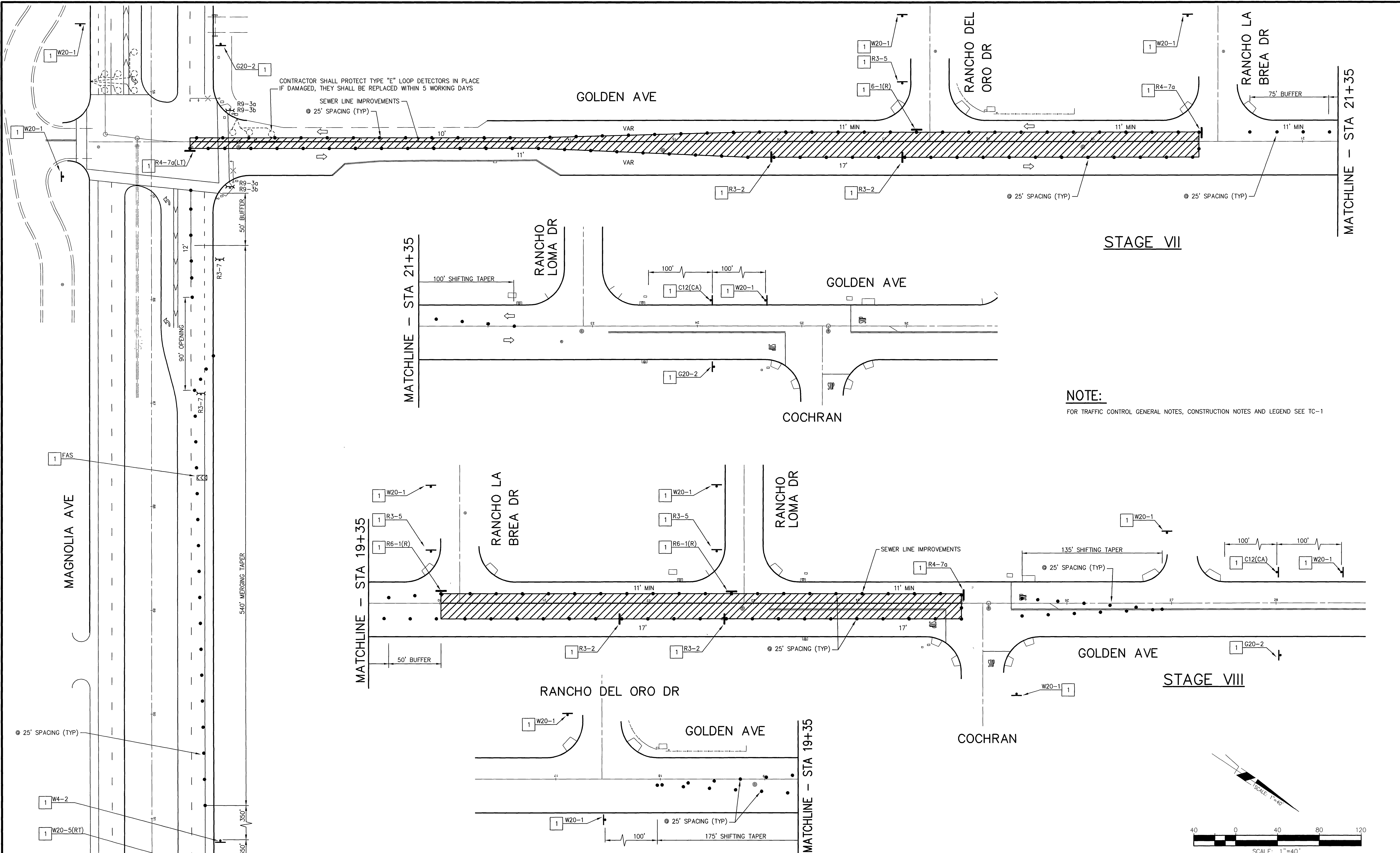
**TRAFFIC CONTROL PLAN**  
**MAGNOLIA-FILLMORE-GOLDEN SEWER**  
**FROM SR-91 TO CHOCHARN AVE**  
**STAGES V AND VI**

SCALE: 1" = 40'

**TC-3**

SHEET **3** OF **5**

FILE NAME: TC-3.DWG



Under Ground Service Alert of Southern California  
 Call: TOLL FREE 1-800-227-2600  
 TWO WORKING DAYS BEFORE YOU DIG

**ENGINEER IN RESPONSIBLE CHARGE**  
 GILBERT M. HERNANDEZ  
 R.C.E. No. 69170 EXPIRES 6-30-10  
 DATE 4-27-10

MARK	REVISIONS	APPR.	DATE

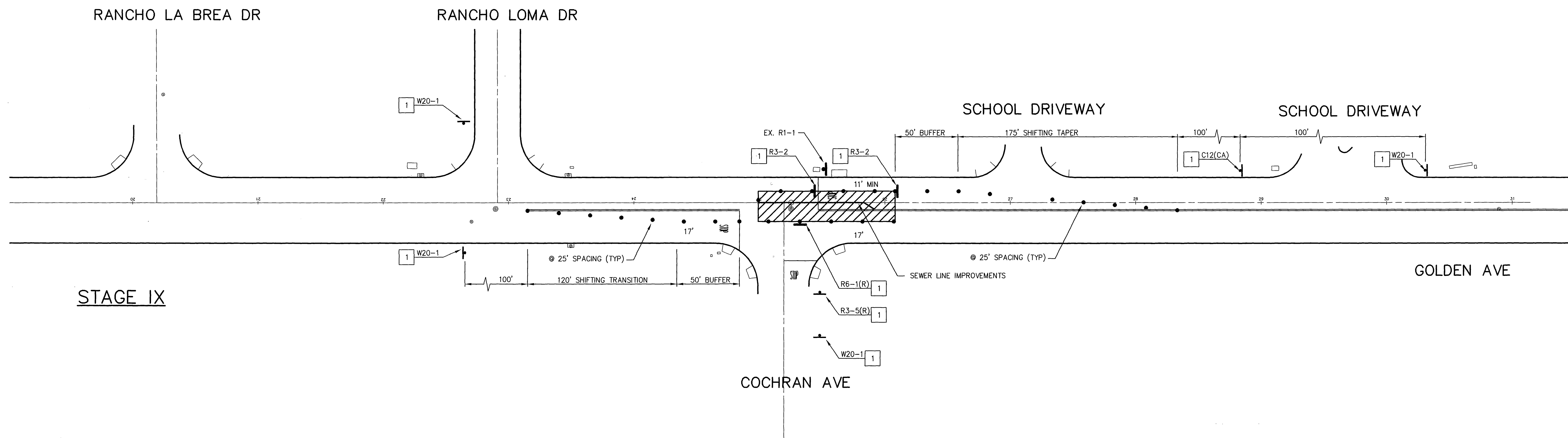
**CITY OF RIVERSIDE, CALIFORNIA**  
**DEPARTMENT OF PUBLIC WORKS**

APPROVED BY	DATE	APPROVED BY	DATE
ENGINEERING MANAGER	5/25/10	CITY ENGINEER	5/24/10
PRINCIPAL ENGINEER	5/24/10		
TRAFFIC DIVISION			
CONSTRUCTION ADMIN.			
PUBLIC UTILITIES			

**TRAFFIC CONTROL PLAN**  
**MAGNOLIA-FILLMORE-GOLDEN SEWER**  
**FROM SR-91 TO CHOCHARN AVE**  
**STAGES VII AND VIII**

SCALE: 1" = 40'

**TC-4**  
 SHEET 4 OF 5  
 FILE NAME: TC-4.DWG



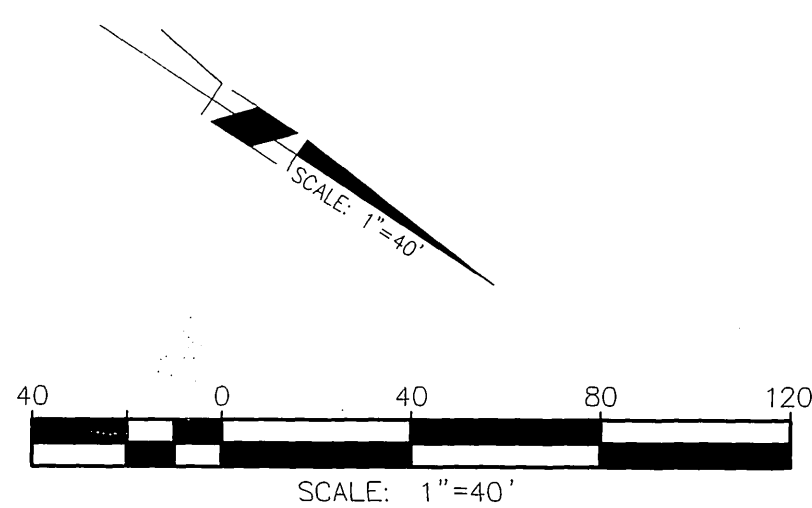
STAGE IX

**LEGENDS AND CONSTRUCTION NOTES:**

- E** EXISTING TO REMAIN.
- 1** PROVIDE TEMPORARY STRIPING, CONSTRUCTION SIGNS, BARRICADES, CONES, FLASHING ARROW SIGNS, TEMPORARY K-RAIL, OR TEMPORARY CRASH CUSHION MODULES (ARRAY PER PLAN).
- 2** CONSTRUCTION WITHIN THE TRAVEL LANE SHALL BE COMPLETED ON A DAILY BASIS. ACCESS SHALL BE MAINTAINED AT ALL TIMES UNLESS APPROVED OTHERWISE.
- 3** ONE TRAFFIC LANE (12' MIN.) SHALL BE MAINTAINED AT ALL TIMES DURING CONSTRUCTION, UNLESS OTHERWISE NOTED.
- 4** MAINTAIN PEDESTRIAN ACCESS UNLESS APPROVED OTHERWISE BY ENGINEER.
- 5** PROVIDE ACCESS FOR PEDESTRIAN CROSSING.
- PM** INSTALL PAVEMENT MARKING OR ARROW AS NOTED.
- RP** REMOVE ALL EXISTING CONFLICTING TRAFFIC STRIPING AND MARKINGS AS NOTED, INCLUDING RAISED PAVEMENT MARKERS.
- RS** REMOVE AND SALVAGE SIGN(S) AND/OR POST(S) (IF APPLICABLE) AS NOTED.
- RL** RELOCATE EXISTING SIGN(S) TO NEW POST (IF APPLICABLE) AS NOTED.
- #** INSTALL CALTRANS STRIPING DETAIL PER NUMBER NOTED, INCLUDING INSTALLATION OF RAISED PAVEMENT MARKERS.
- S** EXISTING SIGNALIZED INTERSECTION
- TYPE II BARRICADE WITH FLASHING YELLOW BARRICADE LIGHT AND SIGN AS NOTED ON PLAN
- TYPE III BARRICADE WITH SIGN AS NOTED ON PLAN
- T** SIGN AS NOTED ON PLAN
- CHANNELIZER OR CONSTRUCTION CONE
- ☐** SOLAR/BATTERY POWERED FLASHING ARROW SIGN
- ←** DIRECTION OF TRAVEL
- ▨** ROADWAY CONSTRUCTION AREA

**NOTE:**

FOR TRAFFIC CONTROL GENERAL NOTES AND CONSTRUCTION NOTES SEE TC-1



Under Ground Service Alert of Southern California  
Call: TOLL FREE 1-800-227-2600  
TWO WORKING DAYS BEFORE YOU DIG

**ENGINEER IN RESPONSIBLE CHARGE**  
GILBERT M. HERNANDEZ  
R.C.E. No. 69170 EXPIRES: 6-30-10  
DATE 4-27-10

MARK	REVISIONS	APPR.	DATE

CITY OF RIVERSIDE, CALIFORNIA  
DEPARTMENT OF PUBLIC WORKS

APPROVED BY	BY	DATE	APPROVED BY
ENGINEERING MANAGER	DM	5/25/10	DM
PRINCIPAL ENGINEER	DM	5/21/2010	CITY ENGINEER
TRAFFIC DIVISION			DATE 5/24/10
CONSTRUCTION ADMIN.			
PUBLIC UTILITIES			

TRAFFIC CONTROL PLAN  
MAGNOLIA-FILLMORE-GOLDEN SEWER  
FROM SR-91 TO CHOCHARN AVE  
STAGE IX  
SCALE: 1" = 40'

TC-5  
SHEET 5 OF 5  
FILE NAME: TC-3.DWG