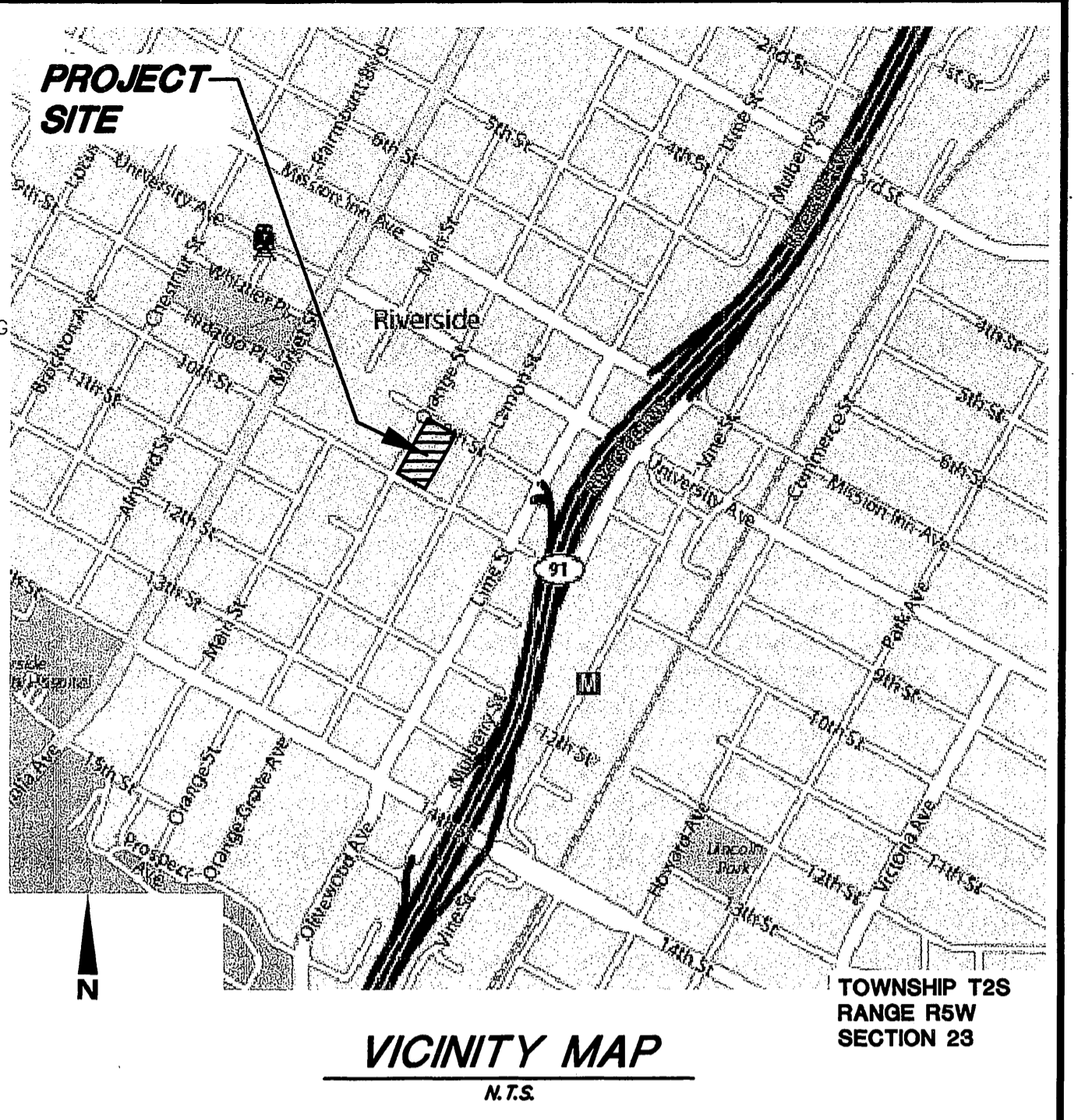


LEGEND:

- EXIST. WATER LINE.
- EXIST. SEWER LINE
- EXIST. ELECT. LINE
- EXIST. TELEPHONE LINE
- EXIST. GAS LINE
- EXIST. STORM DRAIN
- PROP. DRAINAGE LINE
- PROP. SEWER LINE, MIN 1% SLOPE, SIZE TO BE DETERMINED
- PROP. WATER LINE & SERVIC; SIZE TO BE DETERMINED
- PROP. DRAIN LINE, MIN 1% SLOPE
- FS --- FS --- PROP. FIRE SERVICE LINE
- DW --- PROP. DOMESTIC WATER LINE
- E --- E --- PROP. ELECT. LINE
- T --- T --- PROP. COMMUNICATION LINE (TELEPHONE, CABLE TV)
- --- PROPERTY LINE
- OSP --- OSP --- PROP. CONDUITS
- (00.00)TC --- EXIST ELEVATION
- C.O --- PROP. SEWER CLEAN OUT.
- SMH --- PROP. SEWER MANHOLE
- SMH --- EXIST. SEWER MANHOLE
- C/L --- CENTERLINE

ABBREVIATIONS:

CONC.	CONCRETE
Cb	CURB
D	DRAIN PIPE
EG	EXISTING GROUND
ES	EXISTING SURFACE
FL	FLOW LINE
FG	FINISH GRADE
FS	FINISH SURFACE
GB	GRADE BREAK
H=	HEIGHT OF RETAINING
HP	HIGH POINT
INV	INVERT
LIP	CONC. GUTTER LIP
L.P.	LOW POINT
P/L	PROPERTY LINE
PP	POWER POLE
PVMT	PAVEMENT
R/W	RIGHT OF WAY
TC	TOP OF CURB



WESTLAND CIVIL GENERAL NOTES

- WESTLAND CIVIL, INC. HAS NOT BEEN RETAINED OR COMPENSATED, AND ASSUMES NO RESPONSIBILITY TO PROVIDE DESIGN REVIEW SERVICES RELATING TO THE CONTRACTOR'S SAFETY PRECAUTIONS, OR TO MEANS, METHODS, TECHNIQUES, OR SEQUENCES OF PROCEDURES REQUIRED FOR THE CONTRACTOR TO PERFORM HIS WORK.
- THE LOCATION OF, AND EXISTENCE OR NON-EXISTENCE OF UNDERGROUND UTILITIES HAS BEEN DETERMINED TO THE BEST OF THE ENGINEER'S ABILITY, BUT IT SHALL BE THE SOLE RESPONSIBILITY OF THE CONTRACTOR TO DETERMINE THE LOCATION OF ANY EXISTING UTILITIES. THE CONTRACTOR SHALL ASSUME SOLE RESPONSIBILITY FOR ANY DAMAGE DONE TO EXISTING UTILITIES DURING CONSTRUCTION.
- THE CONTRACTOR SHALL CALL "UNDERGROUND SERVICE ALERT" TOLL FREE AT 1-800-227-2800, TWO DAYS PRIOR TO THE START OF CONSTRUCTION FOR UTILITY LOCATIONS.
- THIS DRAWING, INCLUDING THE DESIGNS INCORPORATED HEREIN, IS AN INSTRUMENT OF PROFESSIONAL SERVICE PREPARED FOR USE IN CONSTRUCTION WITH THE PROJECT IDENTIFIED HEREON UNDER THE CONDITIONS EXISTING IN DECEMBER, 2002. ANY USE, IN WHOLE OR IN PART, FOR ANY OTHER PROJECT WITHOUT WRITTEN AUTHORIZATION OF WESTLAND ENGINEERING, INC. SHALL BE AT THE USER'S SOLE RISK.
- CONSTRUCTION CONTRACTOR AGREES THAT IN ACCORDANCE WITH GENERALLY ACCEPTED CONSTRUCTION PRACTICES, CONSTRUCTION CONTRACTOR WILL BE REQUIRED TO ASSUME SOLE AND COMPLETE RESPONSIBILITY FOR JOB SITE CONDITIONS DURING THE COURSE OF CONSTRUCTION OF THE PROJECT, INCLUDING SAFETY OF ALL PERSONS AND PROPERTY, THAT THIS REQUIREMENT SHALL BE MADE TO APPLY CONTINUOUSLY AND NOT BE LIMITED TO NORMAL WORKING HOURS, AND CONSTRUCTION CONTRACTOR FURTHER AGREES TO DEFEND, INDEMNIFY AND HOLD DESIGN PROFESSIONAL HARMLESS FROM ANY AND ALL LIABILITY, REAL OR ALLEGED, IN CONNECTION WITH THE PERFORMANCE OF WORK ON THIS PROJECT, EXCEPTING LIABILITY ARISING FROM THE SOLE NEGLIGENCE OF THE DESIGN PROFESSIONAL.
- THE CONTRACTOR TO PROVIDE ADEQUATE DUST CONTROL ACCORDING TO THE LATEST EDITION OF THE STANDARD SPECIFICATIONS FOR PUBLIC WORKS CONSTRUCTION.

GENERAL NOTES

- CONSTRUCTION SHALL BE IN ACCORDANCE WITH THE CITY OF RIVERSIDE DEPARTMENT OF PUBLIC WORKS, STANDARD DRAWINGS, ITS SUPPLEMENTAL NOTES AND THE STANDARD SPECIFICATIONS FOR PUBLIC WORKS CONSTRUCTION, CURRENT EDITION.
- NO PERSON SHALL PERFORM ANY CONSTRUCTION ACTIVITY OR INSTALL ANY OBJECTS WITHIN THE PUBLIC RIGHTS-OF-WAY OR EASEMENTS OF THE CITY OF RIVERSIDE WITHOUT A VALID CONSTRUCTION PERMIT OR, A STREET OPENING PERMIT OR AN ENCROACHMENT PERMIT ISSUED BY THE CITY'S PUBLIC WORKS DEPARTMENT.
- THE PRIVATE ENGINEER SIGNING THESE PLANS IS RESPONSIBLE FOR ASSURING THE ACCURACY AND ACCEPTABILITY OF THE WORK HEREON. IN THE EVENT OF DISCREPANCIES ARISING DURING CONSTRUCTION, THE PRIVATE ENGINEER SHALL BE RESPONSIBLE FOR DETERMINING AN ACCEPTABLE SOLUTION AND REVISING THE PLANS FOR APPROVAL BY THE CITY.
- CONTRACTOR IS TO VERIFY EXISTING SEWER ELEVATION PRIOR TO CONSTRUCTION.
- NO FINISHED FLOOR ELEVATION SHALL BE LESS THAN 6" ABOVE THE UPPER MANHOLE RIM ELEVATION OF THE SEWER LINE SEGMENT BEING CONNECTED TO, WITHOUT HAVING A PROPER BACKWATER VALVE INSTALLED IN THE LATERAL.
- A PLUG SHALL BE INSTALLED AND WILL REMAIN IN PLACE WHERE THE NEW SEWER CONNECTS WITH THE EXISTING SEWER UNTIL THE NEW SEWER IS ACCEPTED BY THE CITY.
- THE SEWER CONTRACTOR SHALL ADJUST MANHOLES TO FINAL GRADE AFTER PAVING IS COMPLETED.
- CONTRACTOR TO PATCH ALL CROSSING UTILITIES PRIOR CONSTRUCTION.
- PIPE JOINTS FOR VITRIFIED CLAY PIPE SHALL BE TYPE "G" AS SPECIFIED IN SECTION 208-2.3 OF THE STANDARD SPECIFICATIONS FOR PUBLIC WORKS PROJECTS. CEMENTED JOINTS SHALL NOT BE ALLOWED.
- THE DEVELOPER IS RESPONSIBLE FOR PERFORMING A VIDEO INSPECTION OF THE NEW SEWER MAIN PRIOR TO FINAL ACCEPTANCE OF THE WORK. THE VIDEO INSPECTION MUST BE PERFORMED IN THE PRESENCE OF THE PUBLIC WORKS INSPECTOR. A RECORDING OF THE VIDEO INSPECTION MUST BE SUBMITTED TO THE CITY FOR REVIEW AND ACCEPTANCE.

SEWER CONSTRUCTION LEGEND:

- EXIST SEWER MH TO CORE, RECHANNEL, MODIFY AND RECONST. EXIST. BOTTOM TO ACCOMMODATE PROP. 8" SEWER LINE PER CITY STD'S. -- 1 EA
- REMOVE EXIST. SEWER & ABANDON PORTION OF SEWER BEHIND LAST PROPOSED SEWER MH IN ALLEY. -- 120.5 L.F.
- INSTALL 138± LF OF 8" VCP SEWER PIPE (PUBLIC) AT S=0.004. BEDDING SHALL BE CASE II PER CITY STD. DWG. NO. 452. -- 1 EA
- INSTALL SEWER MANHOLE (PUBLIC) PER CITY STD. DWG. NO. 500 -- 21.6± L.F.
- INSTALL 4" SEWER LATERAL 21.6± PER CITY STD. 562A AT S=0.01, SEE PLUMBING PLANS FOR POINT OF CONNECTION. BEDDING SHALL BE CASE II PER CITY STD. DWG. NO. 452, LAY WYE FLAT. -- 27± L.F.
- INSTALL 4" SEWER LATERAL 21± PER CITY STD. 562A AT S=0.01, SEE PLUMBING PLANS FOR POINT OF CONNECTION. BEDDING SHALL BE CASE II PER CITY STD. DWG. NO. 452, LAY WYE FLAT. -- 3 EA
- INSTALL SEWER CLEANOUT PER CITY STD. NO. 562A.
- CONTRACTOR TO VERIFY, PRIOR TO CONSTRUCTION, DEPTH OF PROP. & EXIST. ELECT. CONDUITS & ALL OTHER UTILITIES CROSSING SEWER & LATERALS.

QUANTITIES:

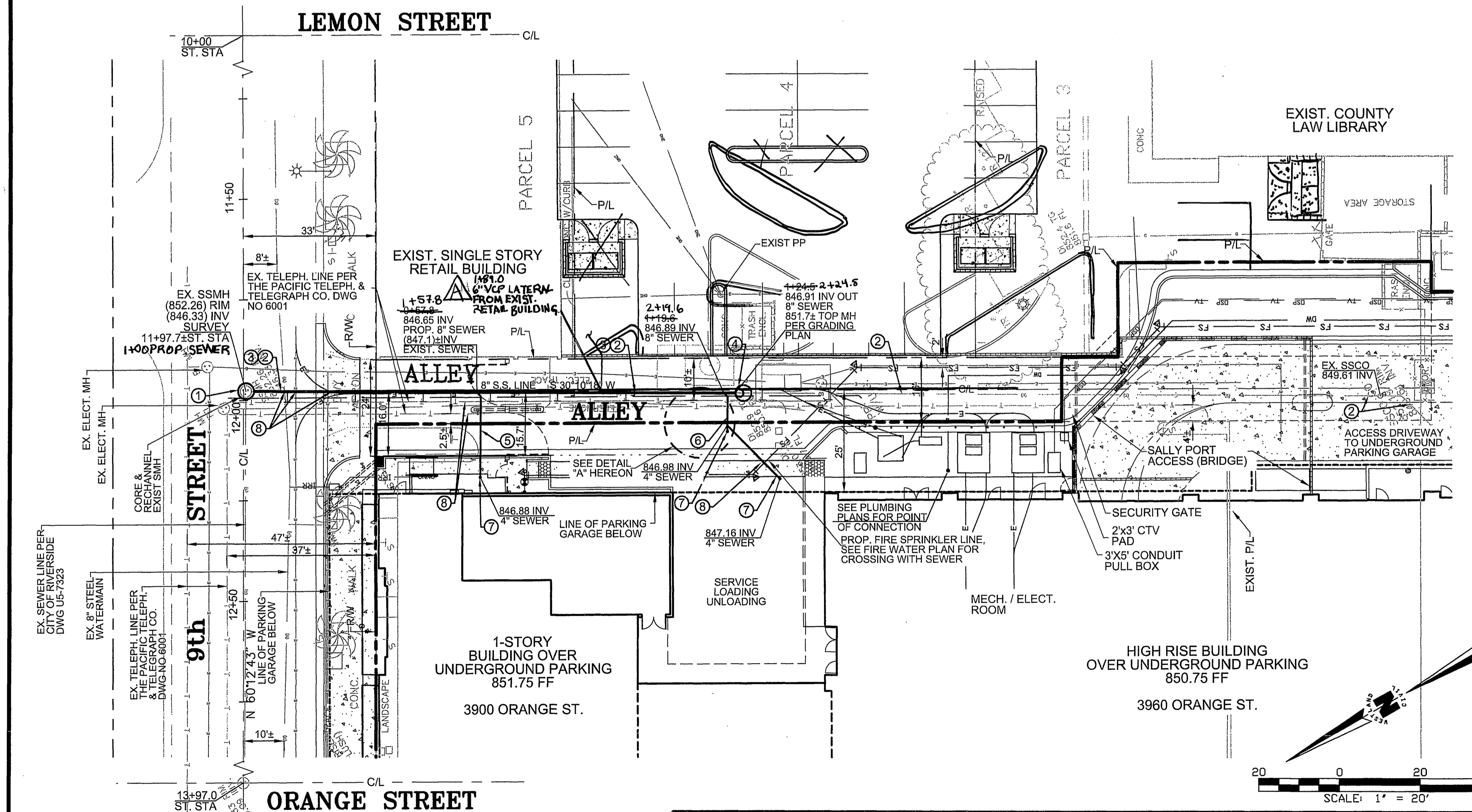
PRIOR TO CONSTRUCTION CONTRACTOR TO VIDEO EXIST. SEWER IN ALLEY TO VERIFY IF THERE ARE ANY EXISTING ACTIVE SERVICES.

ADDITIONAL SEWER NOTES:

- SEE FIRE WATER PLAN FOR CROSSING DETAIL WITH PROPOSED SEWER LATERAL.
- SEE UTILITIES PLAN FOR ADDITIONAL SECTION THROUGH ALLEY.

BASIS OF BEARINGS:

CENTERLINE OF 9TH STREET WITH BEARING N 60°12'43" W IS THE BASIS OF BEARINGS FOR PROPOSED SEWER LINE PER 86 RS 5.



BENCH MARK
POINT ID: 17-U3
P.K. NAIL AND CITY ENGINEER TAG IN THE TOP OF THE CURB OF A DROP INLET STRUCTURE AT THE SOUTHEASTLY CORNER OF NINTH STREET AND ORANGE STREET. ADJUSTED AND ENTERED: MAY 1996.
ELEV. = 850.40

CITY OF RIVERSIDE
PUBLIC UTILITIES DEPARTMENT
WATER DIVISION
APPROVED BY: *[Signature]* 1/13/09
DATE

UNDERGROUND SERVICE ALERT

CALL BEFORE YOU DIG
CALL 1 TOLL FREE
(800) 422-4133

TWO WORKING DAYS BEFORE DIGGING

REGISTERED PROFESSIONAL ENGINEER
DONALD G. WAITE
No. 27364
Exp. 31 MAR 2009
CIVIL
STATE OF CALIFORNIA

PREPARED BY ID #: Slagi,RivOrange
WESTLAND CIVIL, INC.
CIVIL ENGINEERS PLANNING / DESIGN LAND SURVEYORS
550 ST. CHARLES DR, SUITE 208, THOUSAND OAKS, CA, 91360
(805) 495-1330 FAX: (805) 446-9125
[Signature] 1/16/09
DONALD G. WAITE NO. 27364 DATE

CITY OF RIVERSIDE, CALIFORNIA
PUBLIC WORKS DEPARTMENT

APPROVED BY: *[Signature]* BY: *[Signature]* DATE: 1/16/09
PRINCIPAL ENGINEER CITY ENGINEER

DESIGNED BY: MN DRAWN BY: MN CHECKED BY: DGW

CITY BUSINESS TAX CERTIFICATE NO. 109685 EXP. DATE: 05/15/2009

SEWER IMPROVEMENT PLAN & PROFILE - PUBLIC ACCT. NO. PW 08-0659

SEWER PLAN
3900 AND 3960 ORANGE STREET
REGENCY SQUARE

S-2063
SHEET 1 OF 1

HORIZ. SCALE: 1" = 20' VERT. SCALE: 1" = 2'