

**GENERAL NOTES**

- 1). CONSTRUCTION SHALL BE IN ACCORDANCE WITH THE CITY OF RIVERSIDE STANDARD DRAWINGS AND STANDARD SPECIFICATIONS FOR PUBLIC WORKS CONSTRUCTION, 2009 EDITION.
- 2). EXISTING UTILITIES SHOWN ON THIS PLAN ARE PLOTTED FROM PUBLIC RECORDS. THE CONTRACTOR IS REQUIRED TO TAKE DUE PRECAUTIONARY MEASURES TO LOCATE AND PROTECT ALL UTILITIES WHETHER OR NOT SHOWN ON THIS PLAN.
- 3). CONTRACTOR SHALL POTHOLE AND VERIFY ALL LOCATIONS AND ELEVATIONS OF UTILITIES PRIOR TO THE START OF CONSTRUCTION TO ELIMINATE INTERFERENCE WITH NEW CONSTRUCTION.
- 4). THE CONTRACTOR IS REQUIRED TO TAKE DUE PRECAUTIONARY MEASURES TO LOCATE AND PROTECT ALL UTILITIES WITHIN THE CONSTRUCTION WORK AREAS.
- 5). PRIME CONTRACTOR BIDDING THIS WORK SHALL HAVE A CLASS "A" OR A "C-42" LICENSE.
- 6). ALL ELEVATIONS SHOWN ON THIS PLAN SHALL BE STAKED IN THE FIELD.
- 7). PAVEMENT REPLACEMENT AND BACKFILLING OF TRENCH SHALL EITHER BE BACKFILLED AND COMPACTED PER CITY OF RIVERSIDE STANDARD DRAWING 453 OR COVERED WITH TRAFFIC RATED STEEL PLATES AT THE END OF EACH WORK DAY.
- 8). WATER VALVES ENCOUNTERED DURING PIPELINE CONSTRUCTION OR DURING RESTORATION OF SURFACE IMPROVEMENTS SHALL BE PROTECTED IN PLACE, RESTORED TO PRECONSTRUCTION CONDITION AND/OR ADJUSTED TO GRADE.
- 9). CONTRACTOR SHALL PERFORM A VIDEO INSPECTION OF THE FOLLOWING SEWER MANHOLES LOCATED ALONG SYCAMORE CANYON BLVD BETWEEN SIERRA RIDGE DRIVE AND DAN KIPPER DRIVE. PREPARE A WRITTEN REPORT OF FINDINGS TO THE ENGINEER. (SEE TABLE SHEET 4)
- 10). CONTRACTOR SHALL OBTAIN ALL NECESSARY PERMITS/ENCROACHMENTS FROM THE COUNTY OF RIVERSIDE AND CALTRANS FOR PERMISSION TO WORK WITHIN THE COUNTY OF RIVERSIDE AND CALTRANS RIGHT OF WAY.
- 11). IF SEWER WORK IS REQUIRED TO BE PERFORMED OUTSIDE OF THE PUBLIC RIGHT OF WAY THEN THE CONTRACTOR IS REQUIRED TO WORK WITHIN THE DEDICATED SEWER EASEMENT.
- 12). MANHOLE #6-9, 12-21, 24-30, 36-37, 46-47, 49-50, 52-53, 55-61, 63-66 ARE TO BE REHABILITATED PER 500-2.7 USING THE "POLYURETHANE AND EPOXY PROTECTIVE LINING SYSTEM". CONTRACTOR SHALL MEET THE REQUIRED MATERIAL MANUFACTURERS TESTING SPECIFICATIONS.
- 13). MANHOLE #1-5, 10-11, 22, 31-35, 38-45, 48, 51, 54 ARE TO BE CLEANED PER 500-2.2.3.
- 14). MANHOLE #23 & #62 ARE TO BE REHABILITATED USING "CURED IN PLACE MANHOLE (CIPM)" LINER BY POLY-TRIPLEX, MULTIPLEX OR A CITY APPROVED EQUAL.
- 15). MANHOLE #67 TO BE REMOVED AND REPLACED PER STANDARD DRAWING 500, 48" DIAMETER.

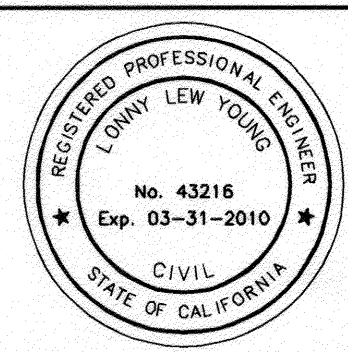
**CONSTRUCTION NOTES**

- NUMBERS ABOVE 100 IN A HEXAGON ON THE PLAN REFER TO THE RESPECTIVE STANDARD DRAWING AND SHALL BE CONSTRUCTED ACCORDINGLY, UNLESS MODIFICATIONS ARE NOTED ON THE PLAN. ANY NUMBER SHOWN BELOW THE STANDARD DRAWING NUMBER INDICATES THE SPECIFIC ALTERNATE TO BE CONSTRUCTED.
- 2  
EXISTING SEWER MANHOLE TO REMAIN (CLEANING REQUIRED)  
MANHOLE NUMBER
  - 3  
REHABILITATE SEWER MANHOLE USING "POLYURETHANE & EPOXY PROTECTIVE LINING SYSTEM"  
MANHOLE NUMBER
  - CIPM  
REHABILITATE SEWER MANHOLE USING "CURED IN PLACE MANHOLE(CIPM)" LINER  
MANHOLE NUMBER
  - R  
RECHANNEL SEWER MANHOLE PER STD DWG 500, SEE DETAIL "A" SHEET 4

**IMPORTANT NOTICE**  
 Section 4216/4217 of the Government Code requires a Dig Alert Identification Number to be issued before a "Permit to Excavate" will be valid. For your Dig Alert I.D. Number call CALL TOLL FREE 48 HOURS BEFORE YOU DIG UNDERGROUND SERVICE ALERT 1-800-227-2600

**BENCHMARK - H7-03**  
 P.K Nail and City Engineer Tag in the southwest corner of a catch basin along the westerly curb of Canyon Crest Dr 17.5' southerly of the ECR of the southwest curb return at Central Ave and Canyon Crest Dr. ELEV- 1103.111

**ENGINEER IN RESPONSIBLE CHARGE**  
 LONNY LEW YOUNG  
 R.C.E. No. 43216 expires 03-31-2010  
 DATE 02/09/2010



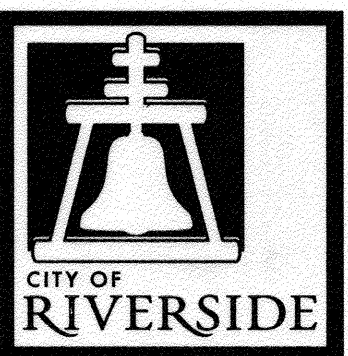
DESIGNED BY	LA	DRAWN BY	LA	CHECKED BY	LA
REVISIONS		APPR.	DATE		
MARK					

CITY OF RIVERSIDE, CALIFORNIA PUBLIC WORKS DEPARTMENT		
APPROVED BY	BY	DATE
PRINCIPAL ENGINEER	[Signature]	02/09/2010
INSPECTOR	[Signature]	02/09/2010
SURVEYOR	[Signature]	02/09/2010
SEWER	[Signature]	02/09/2010
APPROVED BY	BY	DATE
CITY ENGINEER	[Signature]	2/10/10

CENTRAL AVE, SYCAMORE CANYON BLVD & PHILBIN AVE SEWER MANHOLE REPAIR
SCALE: AS SHOWN

ACCT. No. 9836623203 440301XX W.O. 0915552
S-2070
SHEET 7 OF 4

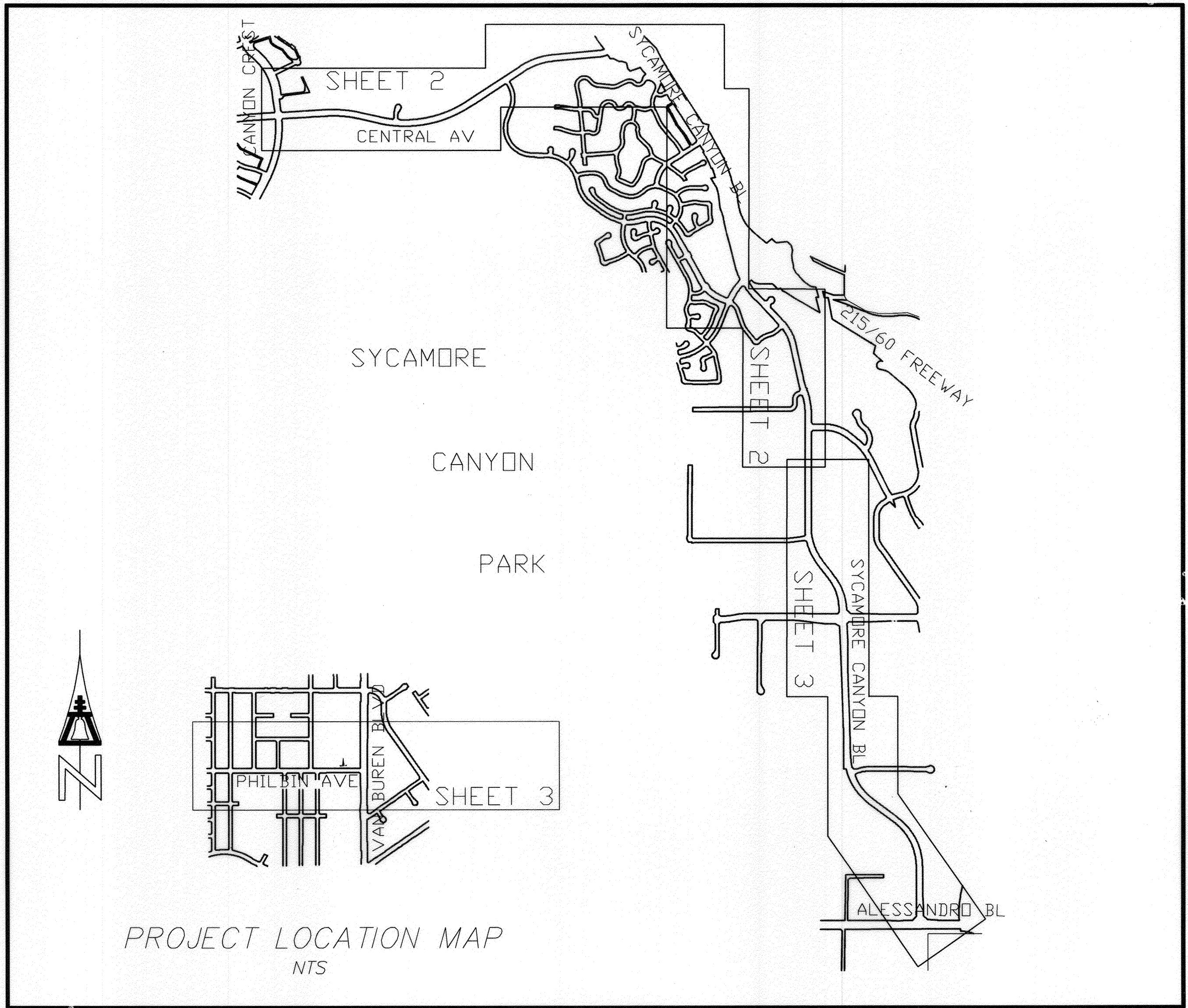
RIVERSIDE CALIFORNIA  
 PUBLIC WORKS DEPARTMENT  
 CENTRAL AVE, SYCAMORE  
 CANYON BLVD & PHILBIN AVE  
 SEWER MANHOLE REPAIR  
 CENTRAL AVE BETWEEN CANYON CREST DR  
 AND SYCAMORE CANYON BLVD  
 SYCAMORE CANYON BLVD BETWEEN CENTRAL AVE  
 AND ALESSANDRO BLVD  
 PHILBIN AVE BETWEEN HAROLD ST  
 AND VAN BUREN BLVD



**EXISTING UNDERGROUND & TOPOGRAPHY LEGEND**

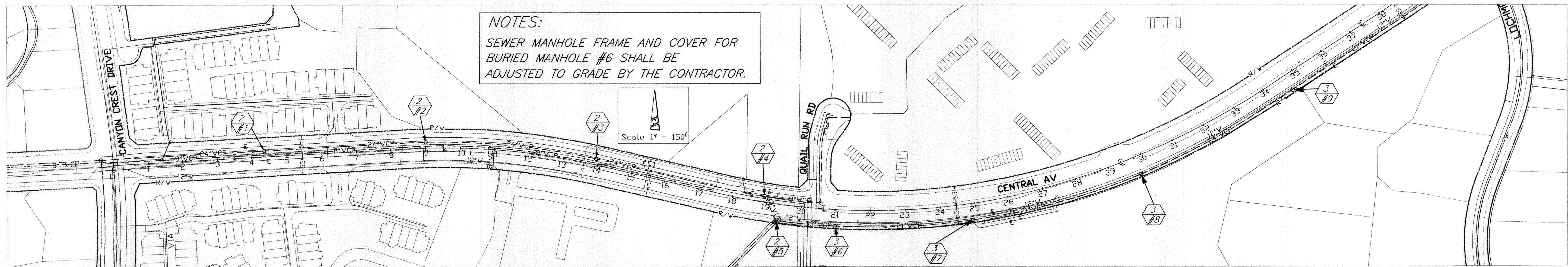
- EXISTING UNDERGROUND UTILITIES:**
- SANITARY SEWER — 8" S — TELEPHONE CONDUIT — T —
  - WATER LINE — 6" W — ELECTRICAL CONDUIT — E —
  - GAS LINE — 3" G —
- EXISTING TOPOGRAPHY:**
- CURB AND GUTTER
  - R/W
  - C/L
  - P/L

**PAVEMENT STRUCTURAL SECTION NOTE**  
 ASPHALT CONCRETE PAVING ALONG PHILBIN AVE SHALL CONSIST OF REMOVAL OF A SECTION OF EXISTING PAVING AND PLACING AND COMPACTING A STRUCTURAL SECTION OF 0.25 FEET OF ASPHALT CONCRETE OVER 0.80 FEET OF CRUSHED AGGREGATE BASE.

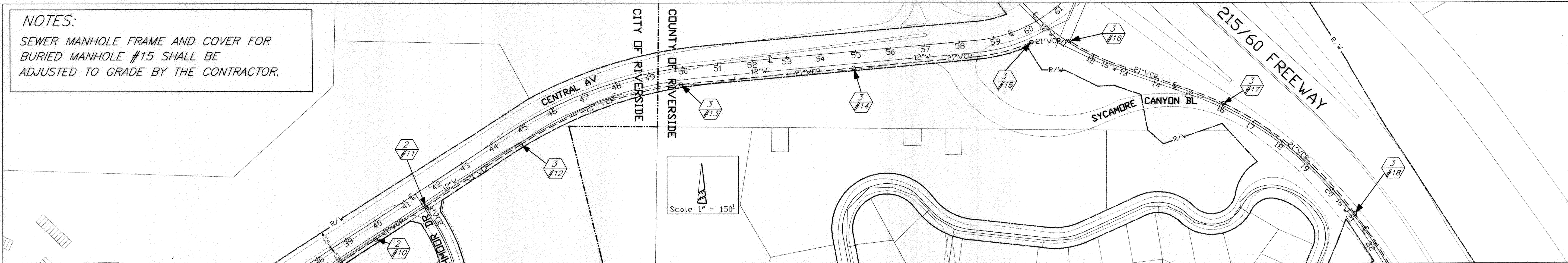


AS-BUILT  
01/13/2011

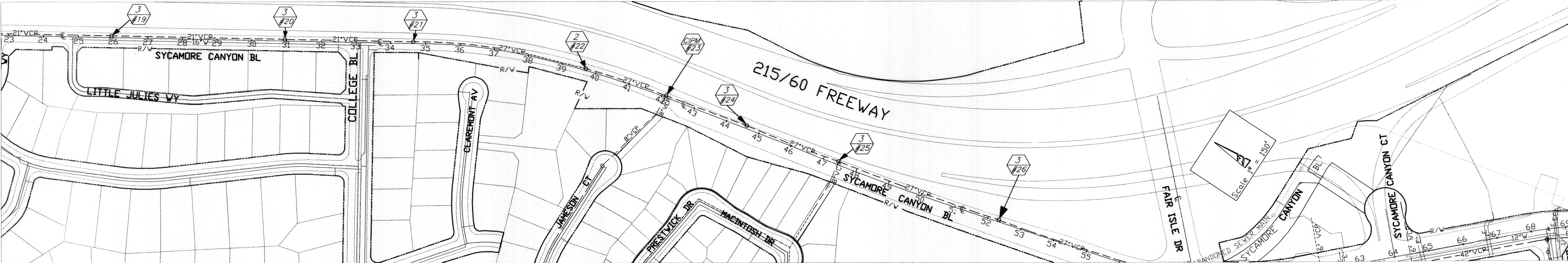
INDEXED  
09-013-2016



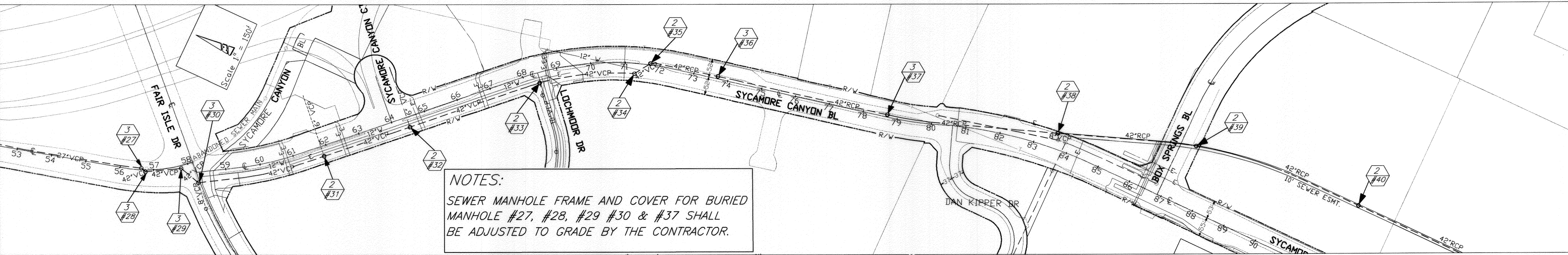
SEE BELOW FOR CONTINUATION



SEE BELOW FOR CONTINUATION



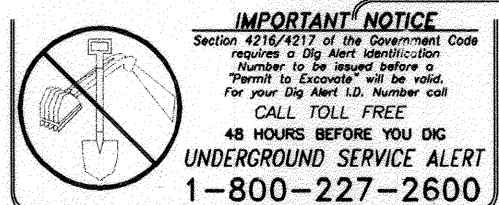
SEE BELOW FOR CONTINUATION



SEE BELOW FOR CONTINUATION

**CONSTRUCTION NOTES**

- NUMBERS ABOVE 100 IN A HEXAGON ON THE PLAN REFER TO THE RESPECTIVE STANDARD DRAWING AND SHALL BE CONSTRUCTED ACCORDINGLY, UNLESS MODIFICATIONS ARE NOTED ON THE PLAN. ANY NUMBER SHOWN BELOW THE STANDARD DRAWING NUMBER INDICATES THE SPECIFIC ALTERNATE TO BE CONSTRUCTED.
- EXISTING SEWER MANHOLE TO REMAIN (CLEANING REQUIRED)
- REHABILITATE SEWER MANHOLE USING "POLYURETHANE & EPOXY PROTECTIVE LINING SYSTEM" MANHOLE NUMBER
- REHABILITATE SEWER MANHOLE USING "CURED IN PLACE MANHOLE(CIPM)" LINER MANHOLE NUMBER



BENCHMARK - 47-03  
P.K. Nail and City Engineer Tag in the southwest corner of a catch basin along the westerly curb of Canyon Crest Dr 17.5' southerly of the ECR of the southwest curb return at Canyon Crest Dr and Canyon Crest Dr. ELEV. - 1103.111

**ENGINEER IN RESPONSIBLE CHARGE**  
LONNAY LEW YOUNG  
R.C.E. No. 43216 expires 03-31-2010  
DATE 02/09/2010



MARK	REVISIONS	APPR.	DATE

CITY OF RIVERSIDE, CALIFORNIA  
PUBLIC WORKS DEPARTMENT

APPROVED BY	BY	DATE	APPROVED BY
INSPECTOR			CITY ENGINEER
DATE			

CENTRAL AVE,  
SYCAMORE CANYON  
BLVD & PHILBIN AVE  
SEWER MANHOLE REPAIR

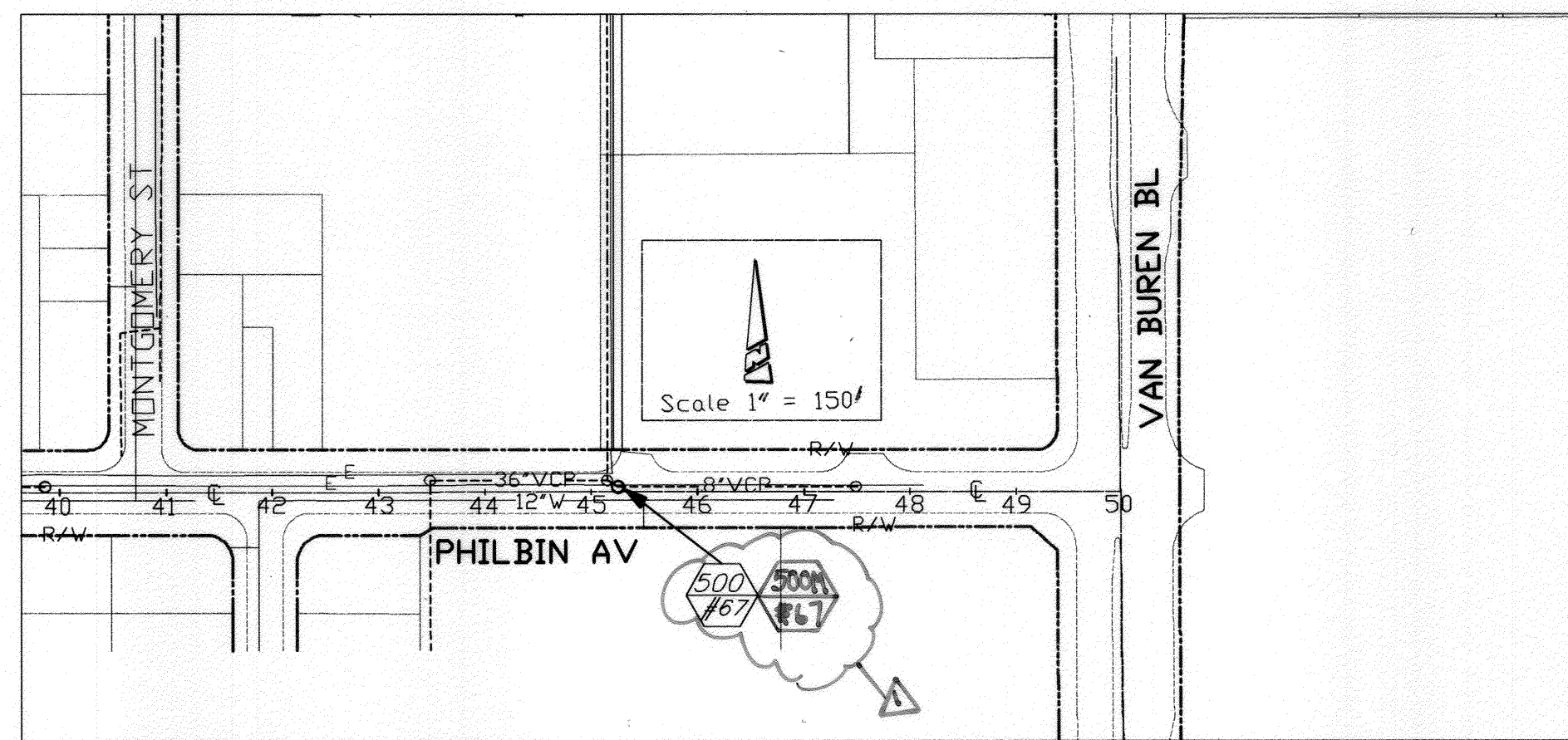
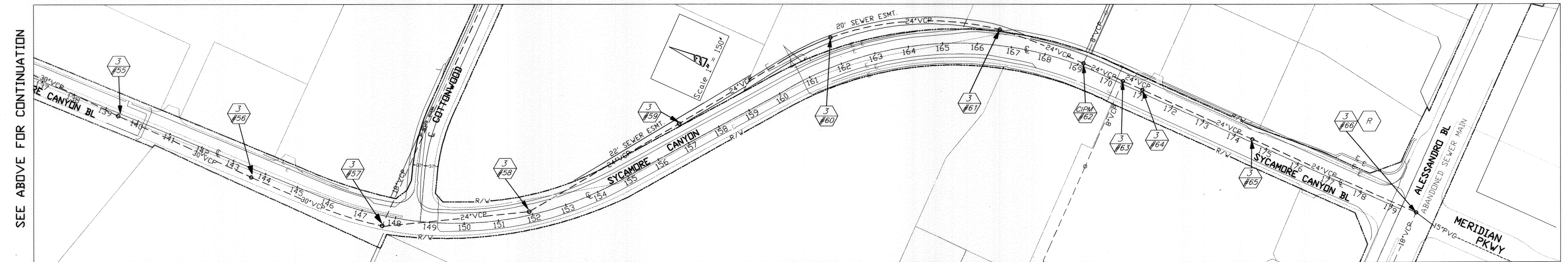
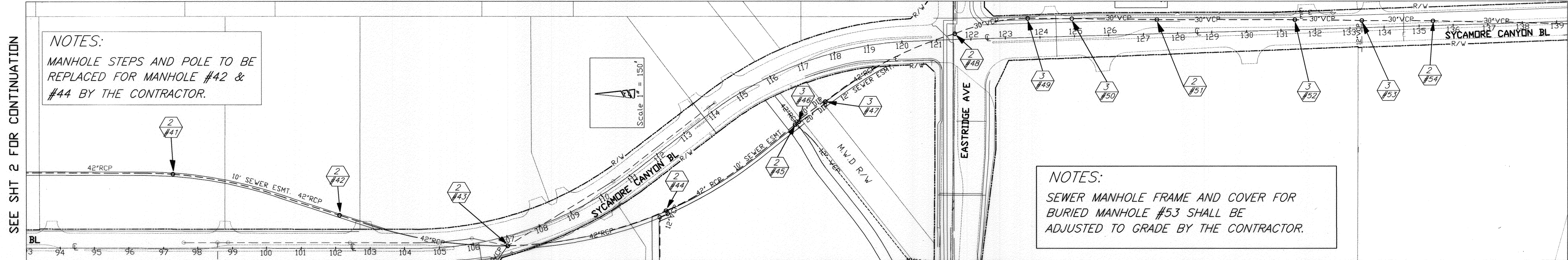
SCALE: AS SHOWN

ACCT. No. 983523703 4403011K  
W.O. 091552

**S-2070**

SHEET 2 OF 4

SEE SHT 3 FOR CONTINUATION



**CONSTRUCTION NOTES**

- NUMBERS ABOVE 100 IN A HEXAGON ON THE PLAN REFER TO THE RESPECTIVE STANDARD DRAWING AND SHALL BE CONSTRUCTED ACCORDINGLY, UNLESS MODIFICATIONS ARE NOTED ON THE PLAN. ANY NUMBER SHOWN BELOW THE STANDARD DRAWING NUMBER INDICATES THE SPECIFIC ALTERNATE TO BE CONSTRUCTED.
- EXISTING SEWER MANHOLE TO REMAIN (CLEANING REQUIRED)  
MANHOLE NUMBER
- REHABILITATE SEWER MANHOLE USING "POLYURETHANE & EPOXY PROTECTIVE LINING SYSTEM"  
MANHOLE NUMBER
- REHABILITATE SEWER MANHOLE USING "CURED IN PLACE MANHOLE(CIPM)" LINER  
MANHOLE NUMBER
- RECHANNEL SEWER MANHOLE PER STD DWG 500, SEE DETAIL "A" SHEET 4

**PAVEMENT STRUCTURAL SECTION NOTE**

ASPHALT CONCRETE PAVING ALONG PHILBIN AVE SHALL CONSIST OF REMOVAL OF A SECTION OF EXISTING PAVING AND PLACING AND COMPACTING A STRUCTURAL SECTION OF 0.25 FEET OF ASPHALT CONCRETE OVER 0.80 FEET OF CRUSHED AGGREGATE BASE.

**IMPORTANT NOTICE**  
Section 4216/4217 of the Government Code requires a Dig Alert Identification Number to be issued before a "Horn to Excavate" will be void. For your Dig Alert I.D. Number call CALL TOLL FREE 48 HOURS BEFORE YOU DIG UNDERGROUND SERVICE ALERT 1-800-227-2600

BENCHMARK - H7-03  
P.K. Nail and City Engineer Tag in the southwest corner of a catch basin along the westerly curb of Canyon Crest Dr 17.5' southerly of the ECR of the southwest curb return at Central Ave and Canyon Crest Dr. ELEV- 1103.111

ENGINEER IN RESPONSIBLE CHARGE  
LONNIE LEW YOUNG  
R.C.E. No. 43216 expires 03-31-2010  
DATE 02/19/2010

REGISTERED PROFESSIONAL ENGINEER  
LONNIE LEW YOUNG  
No. 43216  
Exp. 03-31-2010  
CIVIL  
STATE OF CALIFORNIA

MARK	REVISIONS	APPR. DATE
▲	ADDED NOTE & CALL OUT	02/19/2010

CITY OF RIVERSIDE, CALIFORNIA PUBLIC WORKS DEPARTMENT		
APPROVED BY	BY	DATE
PRINCIPAL ENGINEER	DL	2/19/10
INSPECTOR	BO	2/19/10
SURVEYOR		
SEWER		
VEHICLE EQUIPMENT	24	2/16/10

CENTRAL AVE,  
SYCAMORE CANYON  
BLVD & PHILBIN AVE  
SEWER MANHOLE REPAIR

SCALE: AS SHOWN

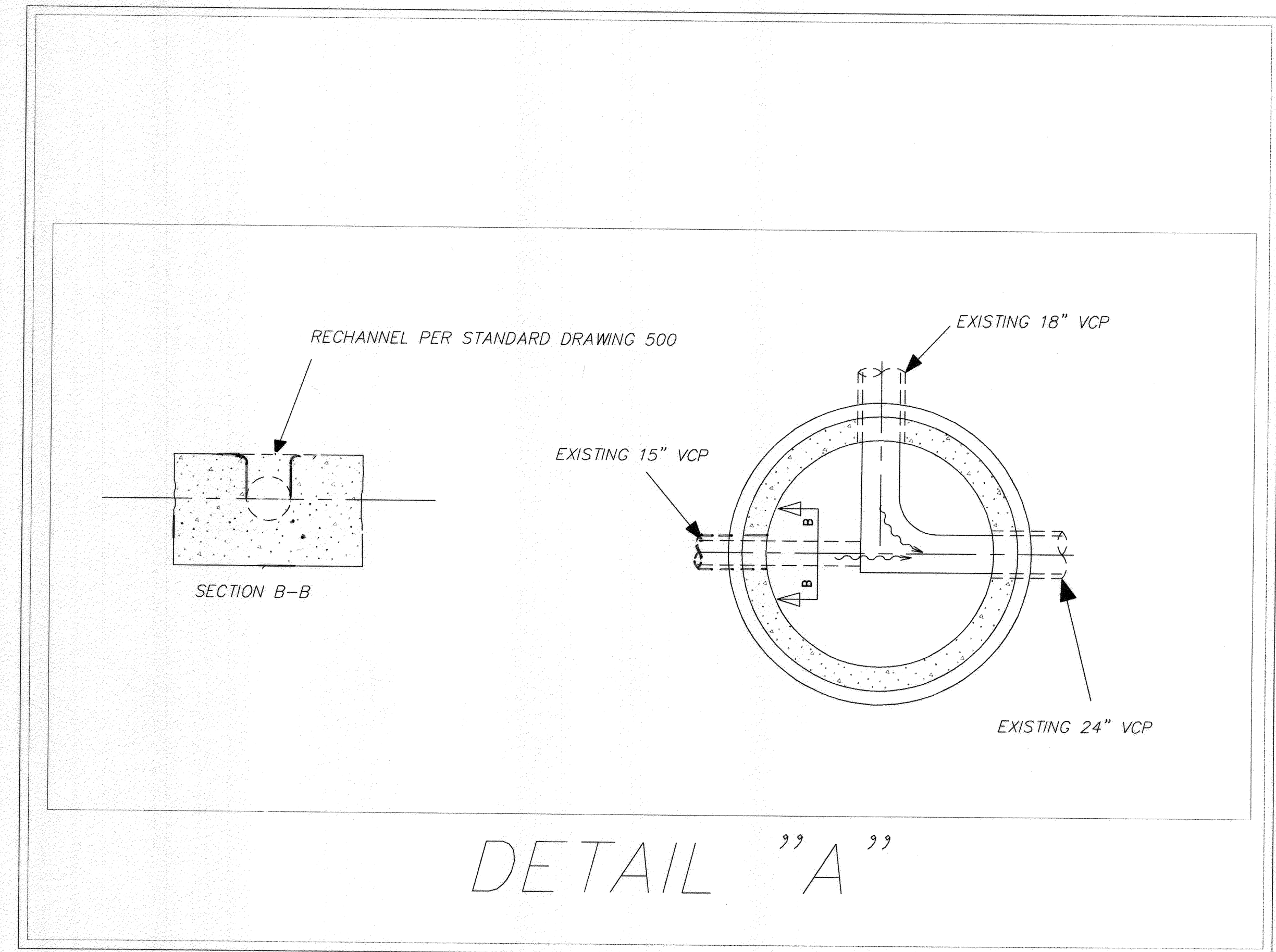
ACCT. No. 98.56523203 440.301AK  
W.O. 0915552  
S-2070  
SHEET 3 OF 4

# SEWER MANHOLE INFORMATION

SEWER MH#	ADD'L PERMITS	VIDEO INSPECTIONS	COMMENTS	STREET NAME	PIPE DIAMETER IN/OUT	EXISTING MANHOLE SHAFT LINING	MH SIZE	RIM TO IE
1			CLEANING	CENTRAL AVE	24"/24"	PVC T-LOCK	60" DIAMETER	10'
2			CLEANING	CENTRAL AVE	24"/24"	PVC T-LOCK	60" DIAMETER	10'
3			CLEANING	CENTRAL AVE	24"/24"	PVC T-LOCK	60" DIAMETER	9'
4			CLEANING	CENTRAL AVE	8"/24"/24"	PVC T-LOCK	60" DIAMETER	11'
5			CLEANING	CENTRAL AVE	33"/24"	PVC T-LOCK	72" DIAMETER	9'
6			REHABILITATION	CENTRAL AVE	21"/33"	PVC T-LOCK	72" DIAMETER	11'
7			REHABILITATION	CENTRAL AVE	21"/21"	COAL TAR EPOXY	4x4 SQUARE MH	5'
8			REHABILITATION	CENTRAL AVE	24"/21"	COAL TAR EPOXY	4x4 SQUARE MH	5'
9			REHABILITATION	CENTRAL AVE	21"/24"	COAL TAR EPOXY	4x4 SQUARE MH	5'
10			CLEANING	CENTRAL AVE	21"/21"	COAL TAR EPOXY	4x4 SQUARE MH	5'
11			CLEANING	CENTRAL AVE	8"/21"/21"	COAL TAR EPOXY	4x4 SQUARE MH	4'
12			REHABILITATION	CENTRAL AVE	21"/21"	COAL TAR EPOXY	4x4 SQUARE MH	5'
13	**		REHABILITATION	CENTRAL AVE	21"/21"	COAL TAR EPOXY	4x4 SQUARE MH	5'
14	**		REHABILITATION	CENTRAL AVE	21"/21"	COAL TAR EPOXY	4x4 SQUARE MH	5'
15	*		REHABILITATION	CENTRAL AVE	21"/21"	COAL TAR EPOXY	4x4 SQUARE MH	5'
16	*		REHABILITATION	CENTRAL AVE	21"/21"	PVC T-LOCK	60" DIAMETER	9'
17	*		REHABILITATION	SYCAMORE CANYON BLVD	21"/21"	PVC T-LOCK	60" DIAMETER	8'
18	*		REHABILITATION	SYCAMORE CANYON BLVD	21"/21"	PVC T-LOCK	60" DIAMETER	8'
19	*		REHABILITATION	SYCAMORE CANYON BLVD	21"/21"	COAL TAR EPOXY	4x4 SQUARE MH	8'
20	*		REHABILITATION	SYCAMORE CANYON BLVD	21"/21"	COAL TAR EPOXY	4x4 SQUARE MH	5'
21	*		REHABILITATION	SYCAMORE CANYON BLVD	21"/21"	COAL TAR EPOXY	4x4 SQUARE MH	6'
22	*		REHABILITATION	SYCAMORE CANYON BLVD	27"/21"	COAL TAR EPOXY	4x4 SQUARE MH	5'
23	*		CLEANING	SYCAMORE CANYON BLVD	27"/27"	PVC T-LOCK	60" DIAMETER	9'
24	*		REHABILITATION	SYCAMORE CANYON BLVD	8"/27"/27"	PVC T-LOCK	60" DIAMETER	6'
25	*		REHABILITATION	SYCAMORE CANYON BLVD	27"/27"	COAL TAR EPOXY	4x4 SQUARE MH	5'
26	*		REHABILITATION	SYCAMORE CANYON BLVD	8"/27"/27"	COAL TAR EPOXY	4x4 SQUARE MH	5'
27	*		REHABILITATION	SYCAMORE CANYON BLVD	27"/27"	COAL TAR EPOXY	4x4 SQUARE MH	6'
28	*		REHABILITATION	SYCAMORE CANYON BLVD	27"/27"	PVC T-LOCK	72" DIAMETER	9'
29	*		REHABILITATION	SYCAMORE CANYON BLVD	42"/27"	PVC T-LOCK	72" DIAMETER	9'
30	*		REHABILITATION	SYCAMORE CANYON BLVD	42"/42"	PVC T-LOCK	72" DIAMETER	11'
31	*		CLEANING	SYCAMORE CANYON BLVD	42"/42"	PVC T-LOCK	72" DIAMETER	14'
32	*		CLEANING	SYCAMORE CANYON BLVD	6"/42"/42"	PVC T-LOCK	72" DIAMETER	19'
33	*		CLEANING	SYCAMORE CANYON BLVD	6"/42"/42"	PVC T-LOCK	72" DIAMETER	17'
34	*		CLEANING	SYCAMORE CANYON BLVD	10"/42"/42"	PVC T-LOCK	72" DIAMETER	17'
35	*		CLEANING	SYCAMORE CANYON BLVD	42"/42"	PVC T-LOCK	72" DIAMETER	19'
36	*		CLEANING	SYCAMORE CANYON BLVD	42"/42"	PVC T-LOCK	60" DIAMETER	19'
37	*		REHABILITATION	SYCAMORE CANYON BLVD	42"/42"	PVC T-LOCK	60" DIAMETER	22'
38	***		REHABILITATION	SYCAMORE CANYON BLVD	42"/42"	PVC T-LOCK	72" DIAMETER	26'
39	***		CLEANING	SYCAMORE CANYON BLVD	8"/42"/42"	PVC T-LOCK	72" DIAMETER	30'
40	***		CLEANING	SYCAMORE CANYON BLVD	42"/42"	PVC T-LOCK	72" DIAMETER	32'
41	***		CLEANING	SYCAMORE CANYON BLVD	42"/42"	PVC T-LOCK	72" DIAMETER	40'
42	***		CLEANING	SYCAMORE CANYON BLVD	42"/42"	PVC T-LOCK	72" DIAMETER	35'
43	***		CLEANING	SYCAMORE CANYON BLVD	42"/42"	PVC T-LOCK	72" DIAMETER	35'
44	***		CLEANING	SYCAMORE CANYON BLVD	42"/42"	PVC T-LOCK	72" DIAMETER	28'
45	***		CLEANING	SYCAMORE CANYON BLVD	12"/42"/42"	PVC T-LOCK	72" DIAMETER	27'
46	***		CLEANING	SYCAMORE CANYON BLVD	12"/PVC/42" RCP	PVC T-LOCK	60" DIAMETER	21'
47	***		REHABILITATION	SYCAMORE CANYON BLVD	DOUBLE 20" PVC/42" RCP	PVC T-LOCK	6x6" AL LIDS	21'
48	***		REHABILITATION	SYCAMORE CANYON BLVD	42" RCP/DOUBLE 20" PVC	PVC T-LOCK	6x6" AL LIDS	21'
49	***		CLEANING	SYCAMORE CANYON BLVD	15"/30" VCP/42" RCP	PVC T-LOCK	72" DIAMETER	25'
50	***		REHABILITATION	SYCAMORE CANYON BLVD	30"/30"	PVC T-LOCK	60" DIAMETER	23'
51	***		REHABILITATION	SYCAMORE CANYON BLVD	30"/30"	PVC T-LOCK	60" DIAMETER	20'
52	***		CLEANING	SYCAMORE CANYON BLVD	30"/30"	PVC T-LOCK	60" DIAMETER	19'
53	***		REHABILITATION	SYCAMORE CANYON BLVD	30"/30"	PVC T-LOCK	60" DIAMETER	9'
54	***		REHABILITATION	SYCAMORE CANYON BLVD	12"/30"/30"	PVC T-LOCK	60" DIAMETER	13'
55	***		CLEANING	SYCAMORE CANYON BLVD	30"/30"	PVC T-LOCK	60" DIAMETER	19'
56	***		REHABILITATION	SYCAMORE CANYON BLVD	30"/30"	PVC T-LOCK	60" DIAMETER	18'
57	***		REHABILITATION	SYCAMORE CANYON BLVD	30"/30"	PVC T-LOCK	60" DIAMETER	10'
58	***		REHABILITATION	SYCAMORE CANYON BLVD	18"/24"/30"	PVC T-LOCK	72" DIAMETER	14'
59	***		REHABILITATION	SYCAMORE CANYON BLVD	24"/24"	PVC T-LOCK	60" DIAMETER	9'
60	***		REHABILITATION	SYCAMORE CANYON BLVD	24"/24"	PVC T-LOCK	60" DIAMETER	11'
61	***		REHABILITATION	SYCAMORE CANYON BLVD	24"/24"	PVC T-LOCK	60" DIAMETER	7'
62	***		REHABILITATION	SYCAMORE CANYON BLVD	24"/24"	COAL TAR EPOXY	4x4 SQUARE MH	5'
63	***		REHABILITATION	SYCAMORE CANYON BLVD	8"/24"/24"	PVC T-LOCK	48" DIAMETER	7'
64	***		REHABILITATION	SYCAMORE CANYON BLVD	8"/24"/24"	PVC T-LOCK	48" DIAMETER	11'
65	***		REHABILITATION	SYCAMORE CANYON BLVD	24"/24"	PVC T-LOCK	60" DIAMETER	13'
66	***		REHABILITATION	SYCAMORE CANYON BLVD	24"/24"	PVC T-LOCK	60" DIAMETER	8'
67	***		REHABILITATION	ALESSANDRO & SYCAMORE CANYON	15"/18"/24"	PVC T-LOCK	60" DIAMETER	9'
			REPLACE	PHILBIN AVE	8"/8"	PVC T-LOCK	48" DIAMETER	6'

- \* MANHOLES LOCATED WITHIN CALTRANS RIGHT OF WAY
- \*\* MANHOLES LOCATED WITHIN COUNTY OF RIVERSIDE RIGHT OF WAY
- \*\*\* VIDEO INSPECT MANHOLES PRIOR TO CLEANING PER GENERAL NOTE 9 SHEET 1.

## RECHANNEL MANHOLE DETAIL



### COATING AND LINING SCHEDULE

FOR MANHOLES #23 & #62. ALL EXPOSED INTERIOR SURFACES OF MANHOLE BASE AND SHAFT TO BE LINED WITH "CURED IN PLACE MANHOLE (CIPM)" POLY-TRIPLEX, MULTIPLEX OR CITY APPROVED EQUAL.

FOR MANHOLE #6, 8-9, 15-17, 27-30, 35-37, 46-47, 49-50, 52-53, 55-60, 63-66. ALL EXPOSED INTERIOR SURFACES ON MANHOLE BASE TO BE COATED WITH "POLYURETHANE AND EPOXY PROTECTIVE LINING SYSTEM" PER MANUFACTURER'S RECOMMENDATIONS, OR CITY APPROVED EQUAL. IF THE EXISTING LINER WITHIN THE SEWER MANHOLE STARTS TO PEEL OR COME LOOSE DURING THE REHABILITATION PROCESS, THE CONTRACTOR SHALL NOTIFY THE ENGINEER IMMEDIATELY.

FOR SQUARE MANHOLES #7-14, 18-21, 24-26 & 61. ALL EXPOSED INTERIOR SURFACE OF MANHOLE BASE, SHAFT, RINGS, FRAME AND COVER TO BE COATED WITH "POLYURETHANE AND EPOXY PROTECTIVE LINING SYSTEM" PER MANUFACTURER'S RECOMMENDATIONS, OR CITY APPROVED EQUAL.

**IMPORTANT NOTICE**  
 Section 4216/4217 of the Government Code requires a Dig Alert Identification Number to be issued before a "Permit to Excavate" will be valid. For your Dig Alert I.D. Number call CALL TOLL FREE 48 HOURS BEFORE YOU DIG UNDERGROUND SERVICE ALERT 1-800-227-2600

BENCHMARK - 47-03  
 P.K. Nail and City Engineer Tag in the southwest corner of a catch basin along the westerly curb of Canyon Crest Dr. 17.5' southerly of the ECR of the southwest curb return at Central Ave and Canyon Crest Dr. ELEV - 1103.111

ENGINEER IN RESPONSIBLE CHARGE  
 LONNY LEW YOUNG  
 R.C.E. No. 43216 expires 03-31-2010  
 DATE 01/31/2010

REGISTERED PROFESSIONAL ENGINEER  
 LONNY LEW YOUNG  
 No. 43216  
 Exp. 03-31-2010  
 CIVIL  
 STATE OF CALIFORNIA

MARK REVISIONS APPR. DATE  
 DESIGNED BY LA DRAWN BY LA CHECKED BY

CITY OF RIVERSIDE, CALIFORNIA  
 PUBLIC WORKS DEPARTMENT  
 APPROVED BY [Signature] DATE 2/6/10  
 INSPECTOR [Signature] DATE 2/6/10  
 SURVEYOR [Signature] DATE 2/6/10  
 SEWER [Signature] DATE 2/6/10

CENTRAL AVE,  
 SYCAMORE CANYON  
 BLVD & PHILBIN AVE  
 SEWER MANHOLE REPAIR

ACCT. No. 9836623203 440301XX  
 W.O. 0915552  
 S-2070  
 SHEET 4 OF 4