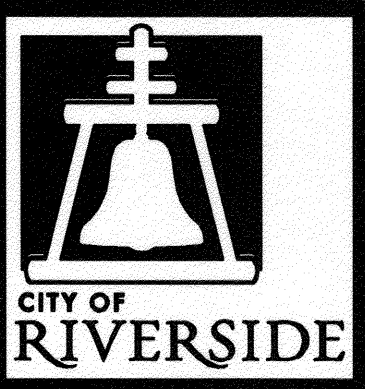


GENERAL CONSTRUCTION NOTES:

- 1 EXISTING UTILITIES SHOWN ON THE PLAN, ARE PLOTTED FROM UTILITY RECORDS. THE CONTRACTOR IS REQUIRED TO TAKE DUE PRECAUTIONARY MEASURES TO LOCATE AND PROTECT ALL UTILITIES WHETHER OR NOT SHOWN ON THIS PLAN.
- 2 PRIME CONTRACTORS BIDDING THIS WORK SHALL HAVE A CLASS "A", "C-34", OR A "C-42" LICENSE.
- 3 ALL ELEVATIONS SHOWN ON THE PLANS SHALL BE STAKED IN THE FIELD.
- 4 CONSTRUCTION SHALL BE IN ACCORDANCE WITH THE CITY OF RIVERSIDE DEPARTMENT OF PUBLIC WORKS STANDARD DRAWINGS AND THE "STANDARD SPECIFICATIONS FOR PUBLIC WORKS CONSTRUCTION", 2009 EDITION.
- 5 CONTRACTOR SHALL POTHOLE AND VERIFY ALL LOCATIONS AND ELEVATIONS OF UTILITIES PRIOR TO START OF CONSTRUCTION TO ELIMINATE INTERFERENCE WITH THE REPAIR WORK.
- 6 CONTRACTOR SHALL PERFORM A PRE AND POST CONSTRUCTION VIDEO OF THE EXISTING SEWER MAIN LINE.
- 7 LINER MATERIAL SHALL BE CURED-IN-PLACE PIPE LINER PER 500-1.4. LINER WALL THICKNESS WITHIN 8" VCP PIPE SHALL BE A MINIMUM 0.177 INCHES. CONTRACTOR SHALL SUBMIT CALCULATIONS FOR LINER WALL THICKNESS WITHIN 4" PIPE.
- 8 MANHOLE SHAFT TO BE REHABILITATED PER 500-2.7 USING "POLYURETHANE AND EPOXY PROTECTIVE LINING SYSTEM". CONTRACTOR SHALL MEET THE REQUIRED MATERIAL MANUFACTURERS TESTING SPECIFICATION.

RIVERSIDE CALIFORNIA

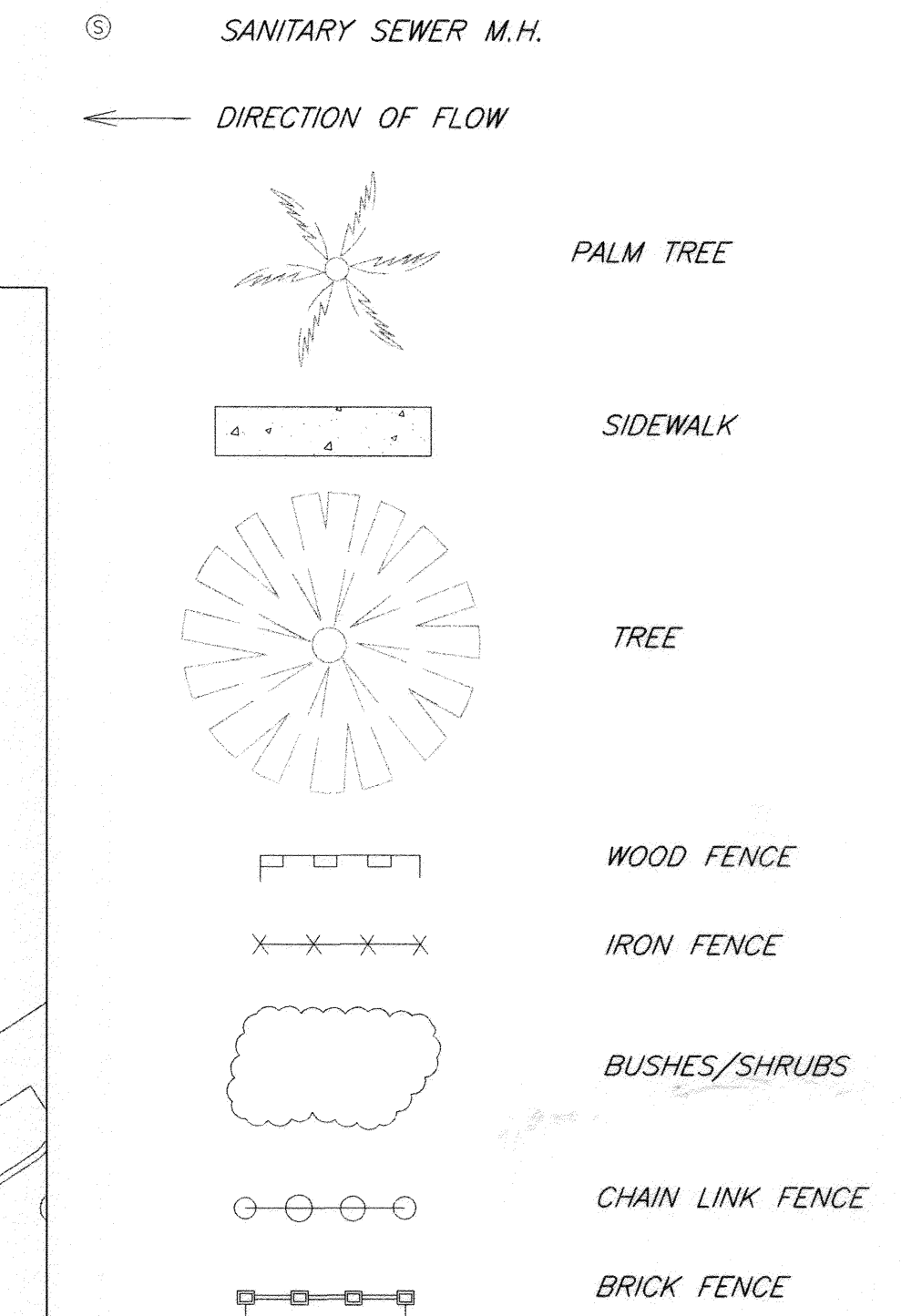


PUBLIC WORKS DEPARTMENT PIPE LINER REPAIRS AT VARIOUS LOCATIONS FY11/12

CONSTRUCTION LEGEND:

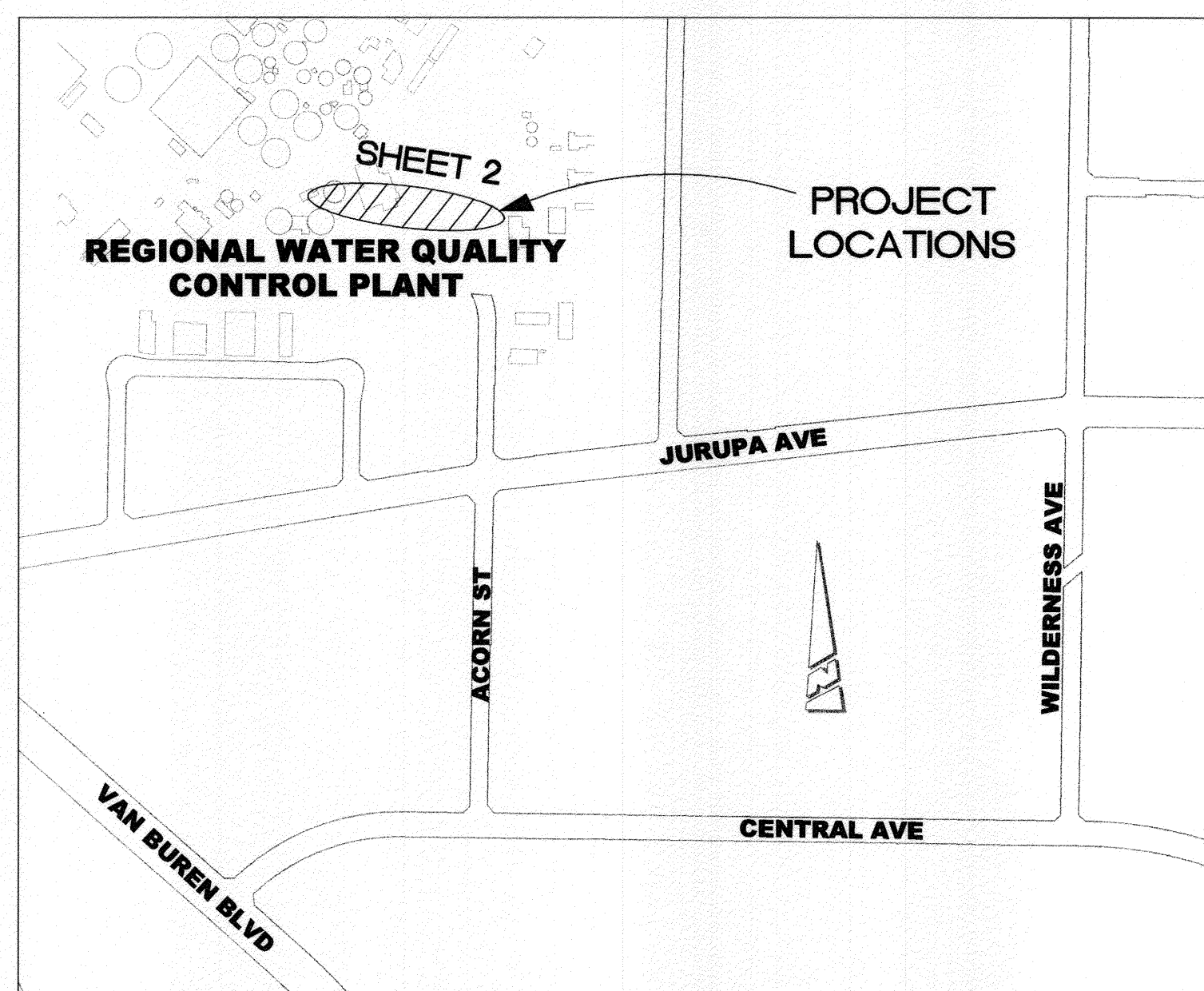
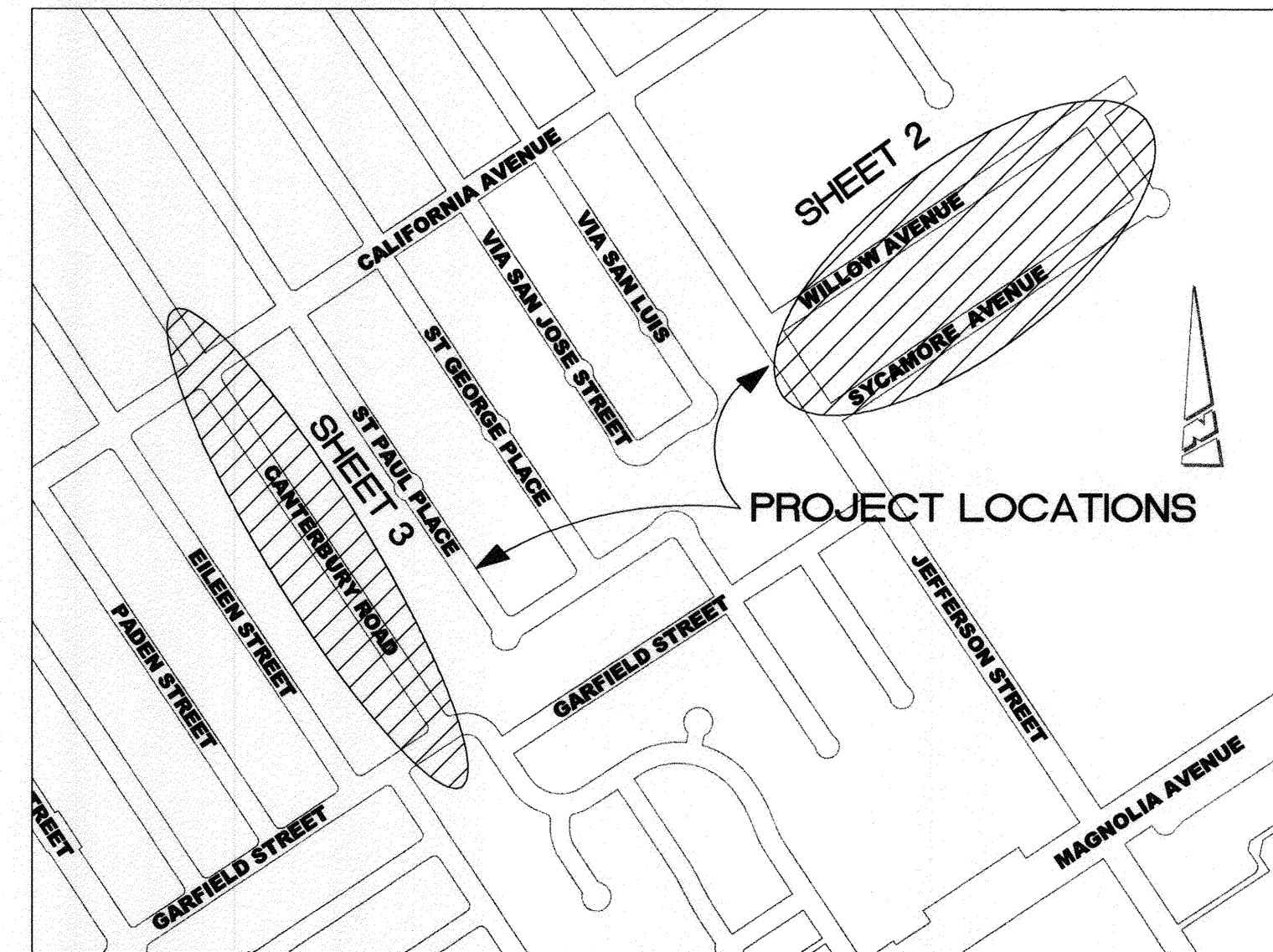
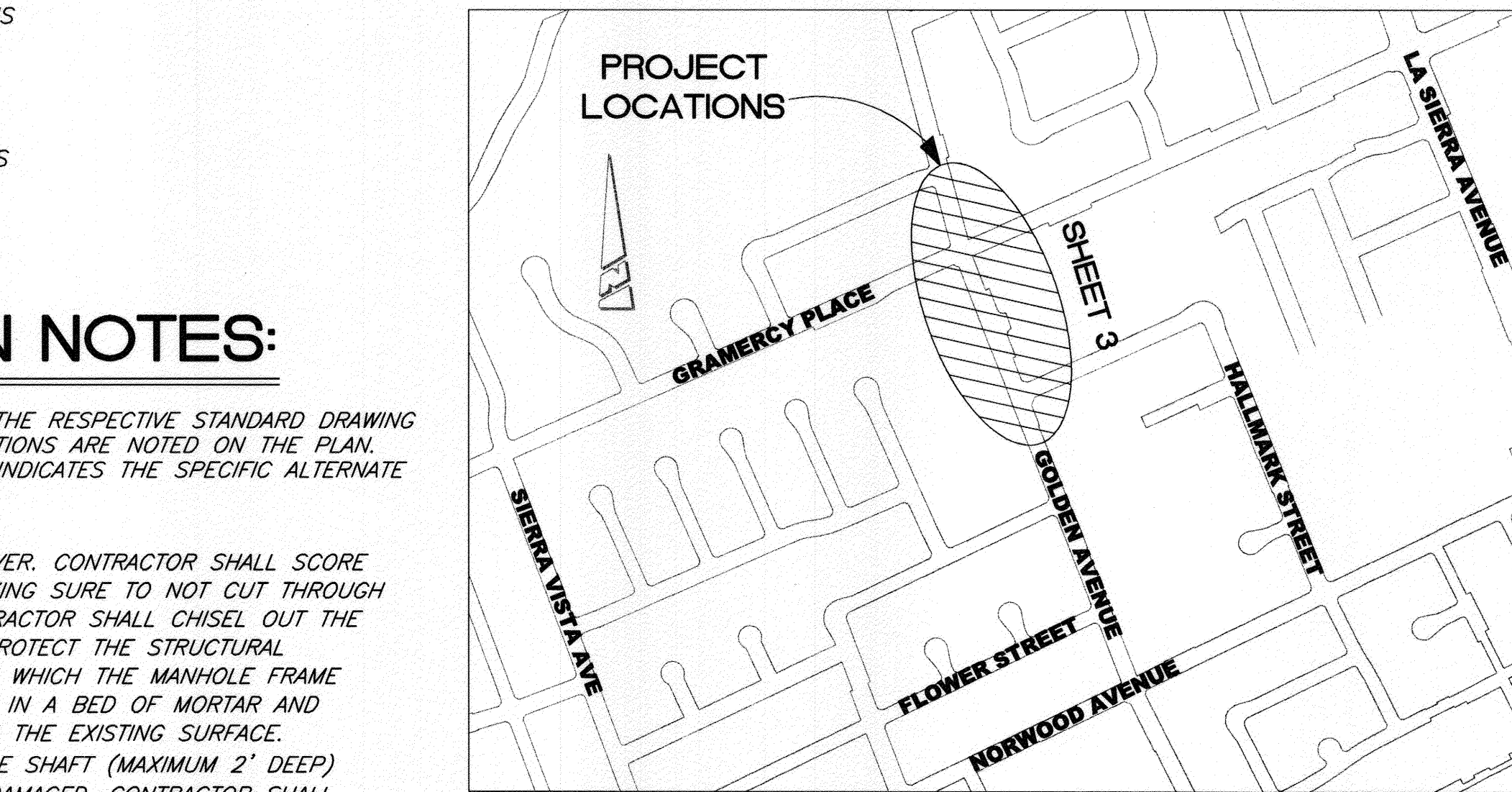
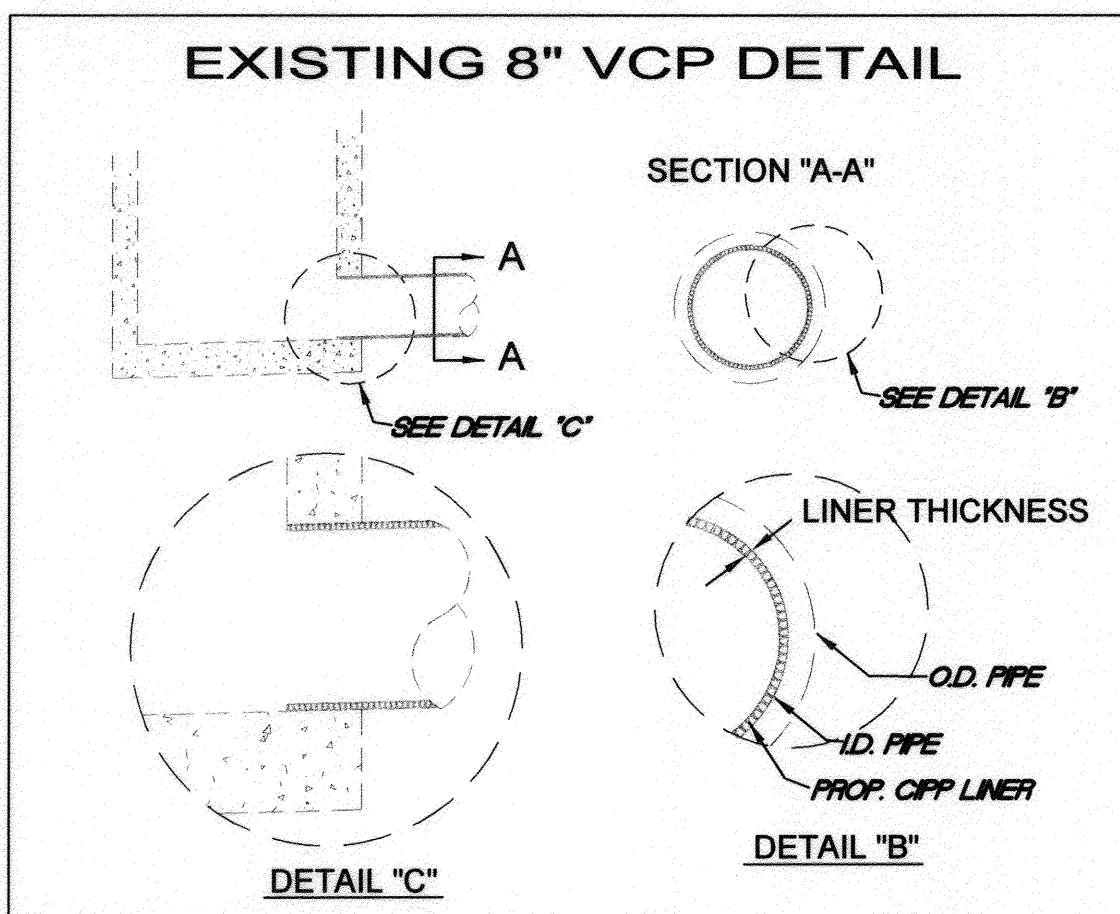


EXISTING TOPOGRAPHY:



SPECIFIC CONSTRUCTION NOTES:

- NUMBERS ABOVE 100 IN A HEXAGON ON THE PLAN REFER TO THE RESPECTIVE STANDARD DRAWING AND SHALL BE CONSTRUCTED ACCORDINGLY. UNLESS MODIFICATIONS ARE NOTED ON THE PLAN, ANY NUMBER SHOWN BELOW THE STANDARD DRAWING NUMBER INDICATES THE SPECIFIC ALTERNATE TO BE CONSTRUCTED.
- CONTRACTOR SHALL FURNISH AND INSTALL NEW FRAME AND COVER. CONTRACTOR SHALL SCORE 4.5" AROUND MANHOLE LID WITH A MINIMUM DEPTH OF 1" MAKING SURE TO NOT CUT THROUGH THE REINFORCING STEEL OF THE STRUCTURES DECK. THE CONTRACTOR SHALL CHISEL OUT THE CONCRETE AROUND THE FRAME AND COVER MAKING SURE TO PROTECT THE STRUCTURAL INTEGRITY OF THE STRUCTURES DECK INCLUDING THE SHELF OF WHICH THE MANHOLE FRAME SITS ON. THE NEW MANHOLE FRAME AND COVER SHALL BE SET IN A BED OF MORTAR AND FILLED IN WITH NON-SHRINK GROUT FINISHED FLUSH TO MATCH THE EXISTING SURFACE.
- CONTRACTOR SHALL REMOVE EXISTING LINER FROM THE MANHOLE SHAFT (MAXIMUM 2' DEEP) TAKING CARE NOT TO DAMAGE THE UNDERLYING CONCRETE. IF DAMAGED, CONTRACTOR SHALL REPAIR THE CONCRETE AND COAT MANHOLE SHAFT WITH POLYURETHANE AND EPOXY PROTECTIVE LINING SYSTEM. THE BOTTOM OF THE MANHOLE LID SHALL ALSO BE COATED WITH POLYURETHANE AND EPOXY PROTECTIVE LINING SYSTEM.
- POINT REPAIR (INSTALL 18 FEET OF 8 INCH VCP TO REPAIR LARGE PIPE OFFSETS.)
- FURNISH AND INSTALL SEWER CLEANOUT IN PARKWAY PER DETAIL SHEET 3. SEWER LATERAL TO BE LINED WITH CIPP LINER OR REPLACED WITH 4" VCP AS DIRECTED BY THE ENGINEER.



EXISTING UNDERGROUND UTILITIES:

EXISTING SEWER	EX 6" SWR
EXISTING SEWER	EX 8" SWR
EXISTING SEWER	EX 10" SWR
EXISTING SEWER	EX 12" SWR
EXISTING SEWER	EX 27" SWR
EXISTING SEWER	EX 30" SWR
EXISTING SEWER	EX 36" SWR
EXISTING SEWER	EX 51" SWR
EXISTING WATER	EX 4" WTR
EXISTING WATER	EX 6" WTR
EXISTING WATER	EX 12" WTR
EXISTING WATER	EX 18" WTR
EXISTING WATER	EX 24" WTR
EXISTING STORM DRAIN	EX SD
EXISTING TELEPHONE	T

SEWER SHEET INDEX:

SHEET NO.	DESCRIPTION
1	TITLE SHEET
2	WILLOW AVE, SYCAMORE AVE, HOLE AVE, POLK AVE AND REGIONAL WATER QUALITY CONTROL PLANT
3	CANTERBURY RD, GOLDEN AVE.

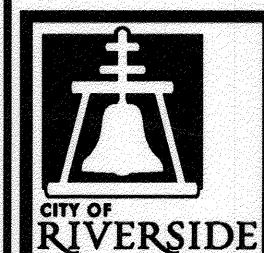
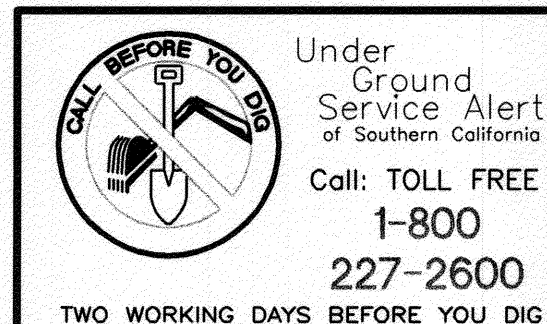
VICINITY MAP
NTS

BENCHMARK: G1-F3

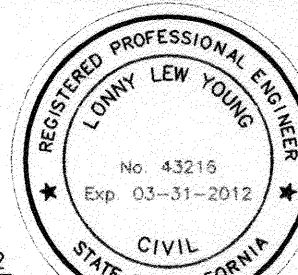
P.K NAIL AND CITY ENGINEER TAG IN THE NORTHEASTERLY CORNER OF A CATCH BASIN ALONG THE NORTHERLY CURB OF GRAMERCY PLACE AT THE NORTHWESTERLY CURB RETURN OF GOLDEN AVE AND GRAMERCY PL.

DATUM: 1929

ELEVATION 771.853



ENGINEER IN RESPONSIBLE CHARGE
LONNY LEW YOUNG
R.C.E. No. 43216 EXPIRES: 03-31-2012
DATE 11/22/11



MARK	REVISIONS	APPR.	DATE

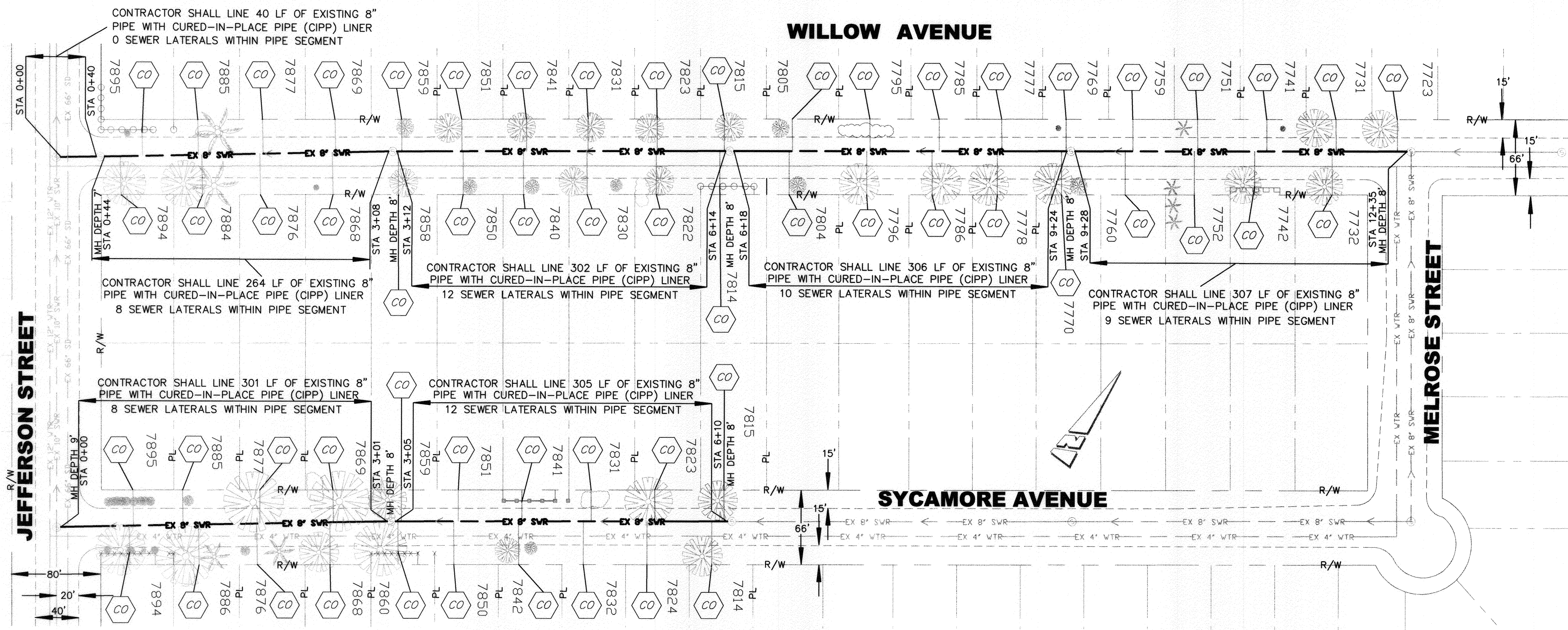
CITY OF RIVERSIDE, CALIFORNIA DEPARTMENT OF PUBLIC WORKS			
APPROVED BY	BY	DATE	APPROVED BY
ENGINEERING MANAGER			
PRINCIPAL ENGINEER			
CONSTRUCTION ADMIN. SURVEY			

SEWER MAIN LINER REHAB PIPE LINER REPAIRS AT VARIOUS LOCATIONS FY 11/12	
TITLE SHEET	
HORIZ. SCALE: N/A	VERT. SCALE: N/A

ACCT. No. 9859423203-44030125 DESIGN WORK ORDER NO.: - 1208507	S-2093
SHEET 1 OF 3	FILE NAME: S-2093-01

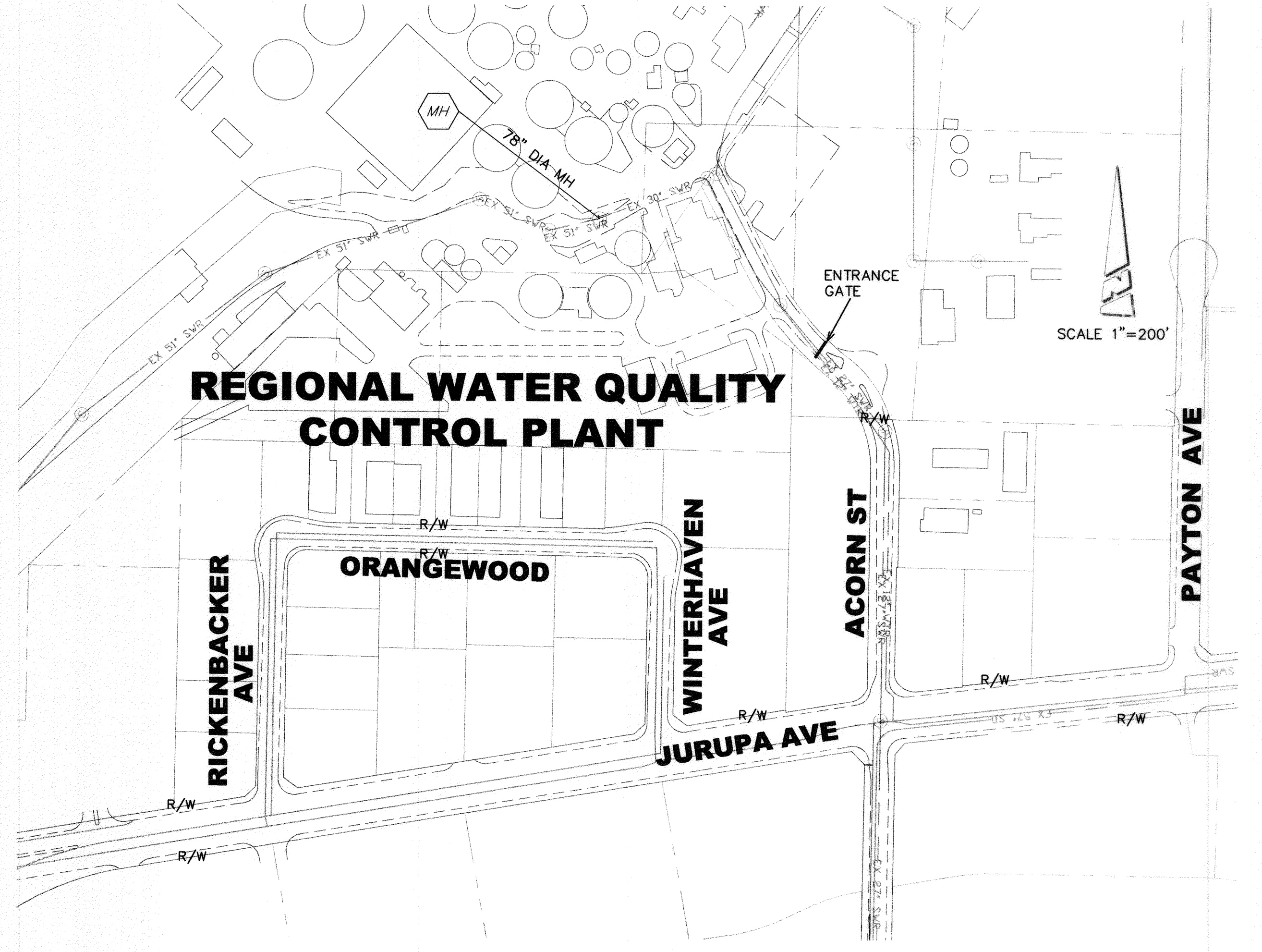
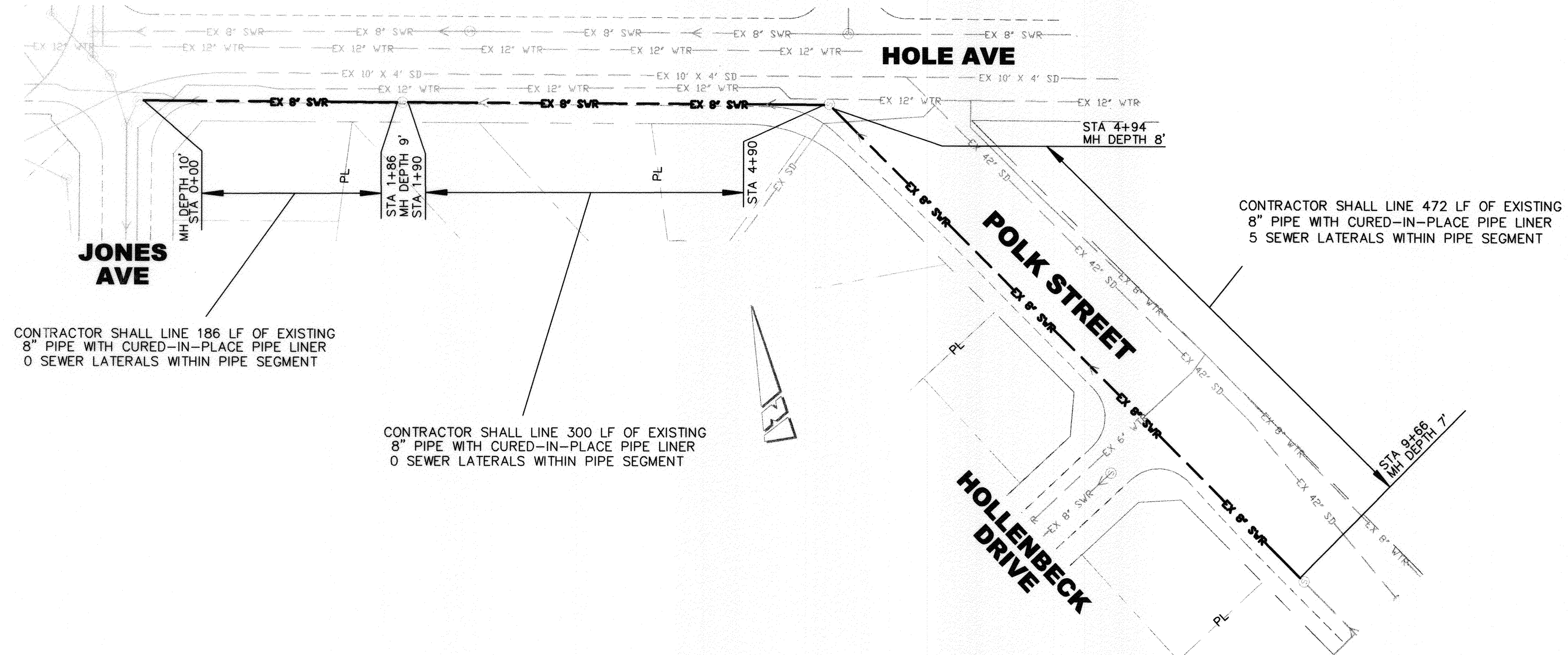
Indexed 6-12-12 BM

AS-BUILT
6-12-12



SPECIFIC CONSTRUCTION NOTES:

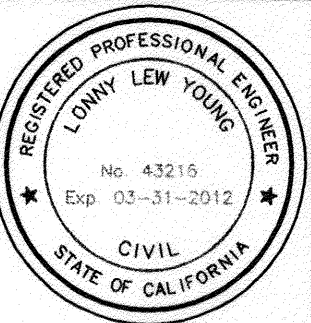
- NUMBERS ABOVE 100 IN A HEXAGON ON THE PLAN REFER TO THE RESPECTIVE STANDARD DRAWING AND SHALL BE CONSTRUCTED ACCORDINGLY. UNLESS MODIFICATIONS ARE NOTED ON THE PLAN, ANY NUMBER SHOWN BELOW THE STANDARD DRAWING NUMBER INDICATES THE SPECIFIC ALTERNATE TO BE CONSTRUCTED.
- CONTRACTOR SHALL FURNISH AND INSTALL NEW FRAME AND COVER. CONTRACTOR SHALL SCORE 4.5" AROUND MANHOLE LID WITH A MINIMUM DEPTH OF 1" MAKING SURE TO NOT CUT THROUGH THE REINFORCING STEEL OF THE STRUCTURES DECK. THE CONTRACTOR SHALL CHISEL OUT THE CONCRETE AROUND THE FRAME AND COVER MAKING SURE TO PROTECT THE STRUCTURAL INTEGRITY OF THE STRUCTURES DECK INCLUDING THE SHELF OF WHICH THE MANHOLE FRAME SITS ON. THE NEW MANHOLE FRAME AND COVER SHALL BE SET IN A BED OF MORTAR AND FILLED IN WITH NON-SHRINK GROUT FINISHED FLUSH TO MATCH THE EXISTING SURFACE. CONTRACTOR SHALL REMOVE EXISTING LINER FROM THE MANHOLE SHAFT (MAXIMUM 2' DEEP) TAKING CARE NOT TO DAMAGE THE UNDERLYING CONCRETE, IF DAMAGED, CONTRACTOR SHALL REPAIR THE CONCRETE AND COAT MANHOLE SHAFT WITH POLYURETHANE AND EPOXY PROTECTIVE LINING SYSTEM. THE BOTTOM OF THE MANHOLE LID SHALL ALSO BE COATED WITH POLYURETHANE AND EPOXY PROTECTIVE LINING SYSTEM.
- PR POINT REPAIR (INSTALL 18 FEET OF 8 INCH VCP TO REPAIR LARGE PIPE OFFSETS.)
- CO FURNISH AND INSTALL SEWER CLEANOUT IN PARKWAY PER DETAIL SHEET 3. SEWER LATERAL TO BE LINED WITH CIPP LINER OR REPLACED WITH 4" VCP AS DIRECTED BY THE ENGINEER.



BENCHMARK: G1-F3
 P.K NAIL AND CITY ENGINEER TAG IN THE NORTHEASTERLY CORNER OF A CATCH BASIN ALONG THE NORTHERLY CURB OF GRAMERCY PLACE AT THE NORTHWESTERLY CURB RETURN OF GOLDEN AVE AND GRAMERCY PL.
 DATUM: 1929
 ELEVATION 771.853

Under Ground Service Alert of Southern California
 Call: TOLL FREE 1-800-227-2600
 TWO WORKING DAYS BEFORE YOU DIG

ENGINEER IN RESPONSIBLE CHARGE
 LONNY LEW YOUNG
 R.C.E. No. 43216 EXPIRES: 03-31-2012
 DATE 4/19/2011



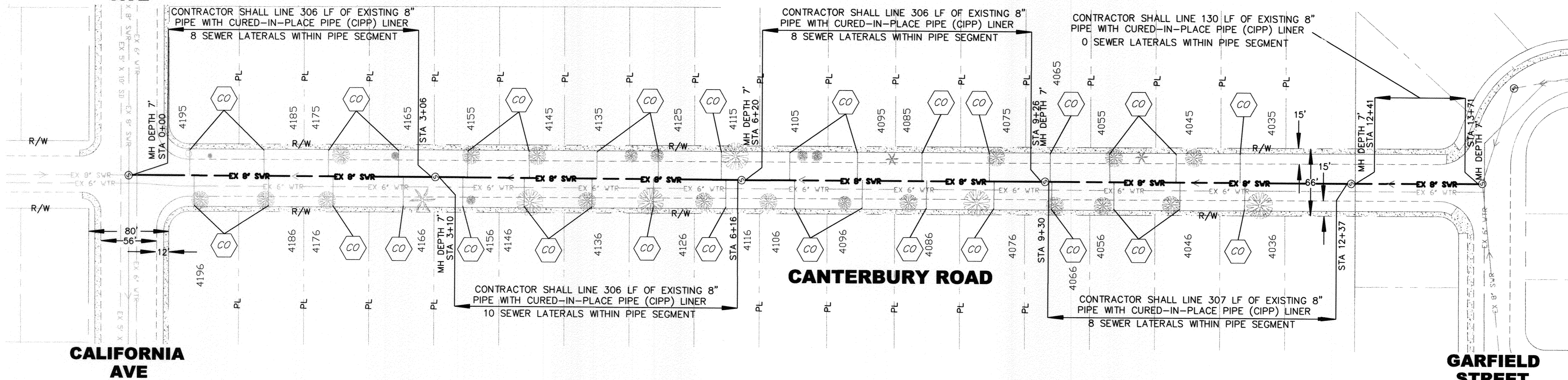
MARK	REVISIONS	APPR	DATE

CITY OF RIVERSIDE, CALIFORNIA DEPARTMENT OF PUBLIC WORKS			
APPROVED BY	BY	DATE	APPROVED BY
ENGINEERING MANAGER			
PRINCIPAL ENGINEER			
CONSTRUCTION ADMIN. SURVEY			

SEWER MAIN LINER REHAB
PIPE LINER REPAIRS AT VARIOUS LOCATIONS FY 11/12
WILLOW, SYCAMORE, POLK AND HOLE
HORIZ. SCALE: 1"=60' VERT. SCALE: N/A

ACCT. NO. 9859423203-44030125 DESIGN WORK ORDER NO.: - 1208507
S-2093
SHEET 2 OF 3
FILE NAME: S-2093-02

CALIFORNIA AVE

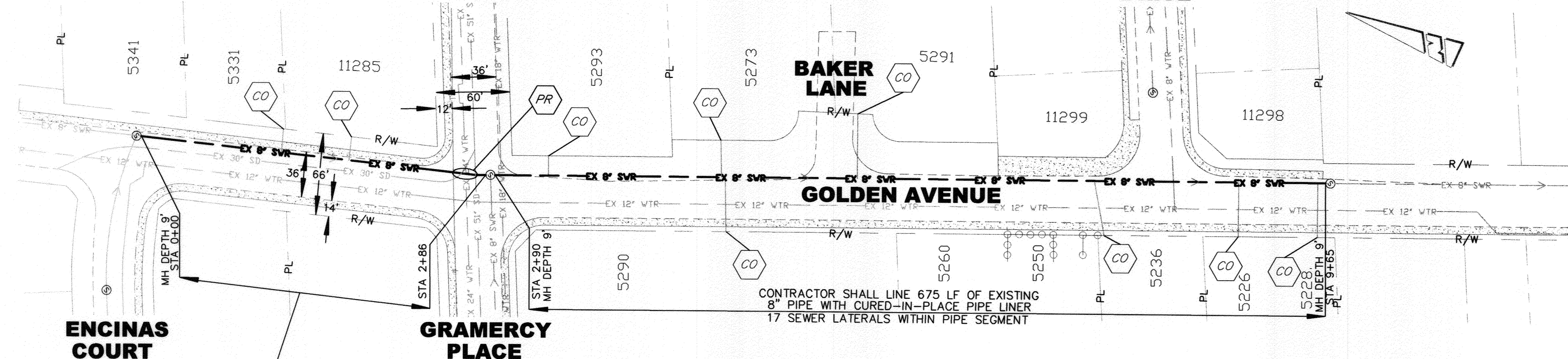


CALIFORNIA AVE

GARFIELD STREET

GRAMERCY PLACE

GREEN ARBOR DRIVE



ENCINAS COURT

GRAMERCY PLACE

BAKER LANE

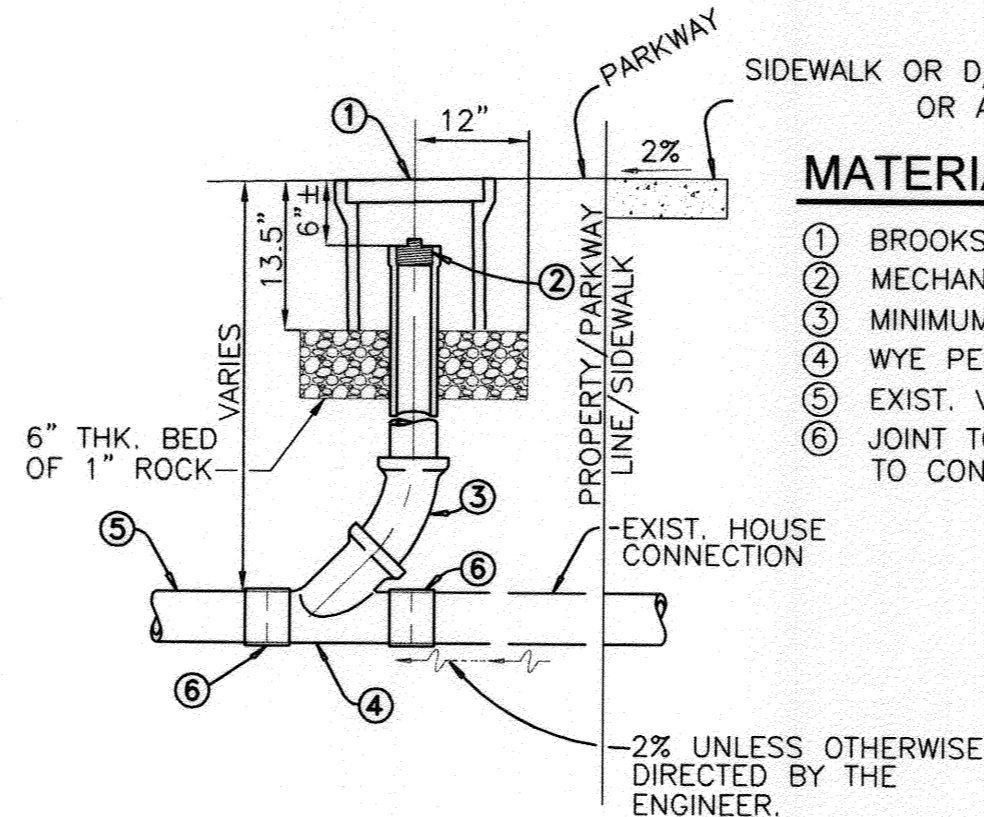
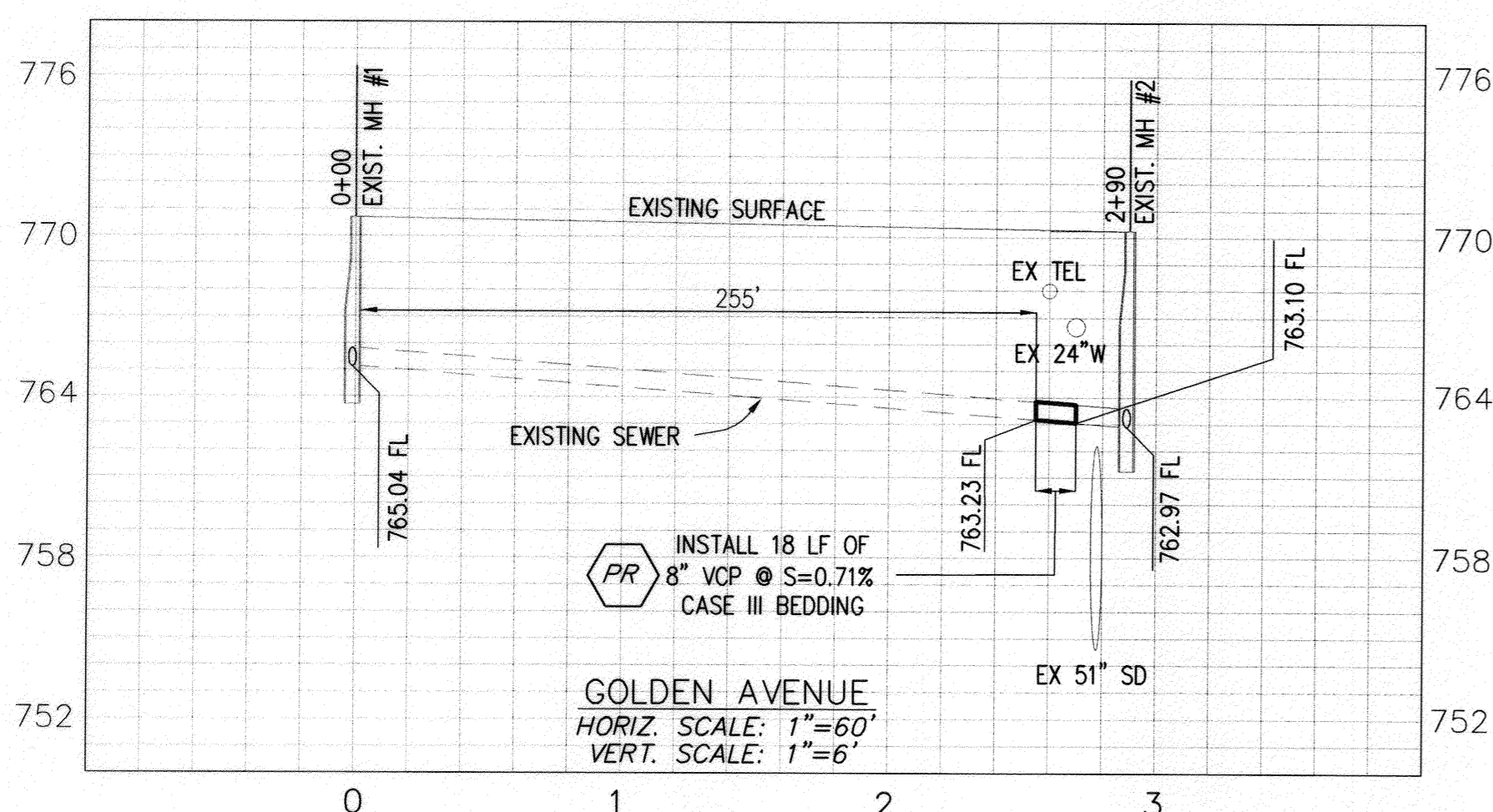
GOLDEN AVENUE

CONTRACTOR SHALL LINE 286 LF OF EXISTING 8" PIPE WITH CURED-IN-PLACE PIPE LINER 3 SEWER LATERALS WITHIN PIPE SEGMENT

CONTRACTOR SHALL LINE 675 LF OF EXISTING 8" PIPE WITH CURED-IN-PLACE PIPE LINER 17 SEWER LATERALS WITHIN PIPE SEGMENT

SPECIFIC CONSTRUCTION NOTES:

- NUMBERS ABOVE 100 IN A HEXAGON ON THE PLAN REFER TO THE RESPECTIVE STANDARD DRAWING AND SHALL BE CONSTRUCTED ACCORDINGLY. UNLESS MODIFICATIONS ARE NOTED ON THE PLAN. ANY NUMBER SHOWN BELOW THE STANDARD DRAWING NUMBER INDICATES THE SPECIFIC ALTERNATE TO BE CONSTRUCTED.
- CONTRACTOR SHALL FURNISH AND INSTALL NEW FRAME AND COVER. CONTRACTOR SHALL SCORE 4.5" AROUND MANHOLE LID WITH A MINIMUM DEPTH OF 1" MAKING SURE TO NOT CUT THROUGH THE REINFORCING STEEL OF THE STRUCTURES DECK. THE CONTRACTOR SHALL CHISEL OUT THE CONCRETE AROUND THE FRAME AND COVER MAKING SURE TO PROTECT THE STRUCTURAL INTEGRITY OF THE STRUCTURES DECK INCLUDING THE SHELF OF WHICH THE MANHOLE FRAME SITS ON. THE NEW MANHOLE FRAME AND COVER SHALL BE SET IN A BED OF MORTAR AND FILLED IN WITH NON-SHRINK GROUT FINISHED FLUSH TO MATCH THE EXISTING SURFACE. CONTRACTOR SHALL REMOVE EXISTING LINER FROM THE MANHOLE SHAFT (MAXIMUM 2' DEEP) TAKING CARE NOT TO DAMAGE THE UNDERLYING CONCRETE. IF DAMAGED, CONTRACTOR SHALL REPAIR THE CONCRETE AND COAT MANHOLE SHAFT WITH POLYURETHANE AND EPOXY PROTECTIVE LINING SYSTEM. THE BOTTOM OF THE MANHOLE LID SHALL ALSO BE COATED WITH POLYURETHANE AND EPOXY PROTECTIVE LINING SYSTEM.
- POINT REPAIR (INSTALL 18 FEET OF 8 INCH VCP TO REPAIR LARGE PIPE OFFSETS.)
- FURNISH AND INSTALL SEWER CLEANOUT IN PARKWAY PER DETAIL SHEET 3. SEWER LATERAL TO BE LINED WITH CIPP LINER OR REPLACED WITH 4" VCP AS DIRECTED BY THE ENGINEER.



CLEANOUT DETAIL

MATERIALS

1. BROOKS NO. 9-T VALVE BOX OR EQUAL (MARKED SEWER)
2. MECHANICAL STOPPER ST-SERIES BY MISSION RUBBER COMPANY OR CITY APPROVED EQUAL.
3. MINIMUM 3" SEWER PIPE OR MATCH EXISTING.
4. WYE PER UNIFORM BUILDING CODE.
5. EXIST. VCP SEWER LATERAL.
6. JOINT TO CONNECT EXIST. VCP TO PROP. VCP SHALL BE TYPE "Z" JOINTS. JOINTS TO CONNECT PROP. VCP TO PROP. VCP SHALL BE TYPE "C".

NOTES:

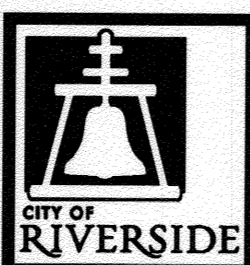
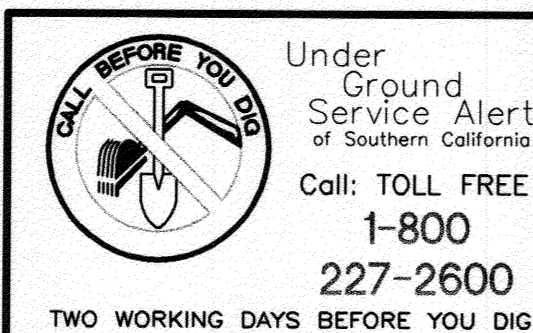
1. LID MUST BE CAST IRON AND MARKED SEWER.
2. BACKFILL OVER LATERALS TO BE COMPACTED BY TAMPING OR TWO SACK SLURRY AT CONTRACTORS EXPENSE.
3. GRADE PARKWAY AT 2% TOWARDS CURB OR BACK OF SIDEWALK OR AS DIRECTED BY THE ENGINEER.
4. PCC SIDEWALK OR PCC D/W REMOVAL SHALL BE TO THE NEAREST SCORELINE. HOWEVER, NO LESS THAN 25 SQUARE FEET OF SIDEWALK OR D/W, WITH THE SMALLEST DIMENSION A MINIMUM OF 4 FEET, SHALL BE REMOVED AND REPLACED.
5. INSTALL SEWER CLEAN OUT IN THE RIGHT OF WAY LOCATION AND AS DIRECTED BY THE ENGINEER. WHERE C.O. IS TO BE PLACED IN A DIRT AREA, A 4-INCH THICK, 24"x24" PCC APRON SHALL BE CONSTRUCTED AROUND IT.

BENCHMARK: G1-F3

P.K NAIL AND CITY ENGINEER TAG IN THE NORTHEASTERLY CORNER OF A CATCH BASIN ALONG THE NORTHERLY CURB OF GRAMERCY PLACE AT THE NORTHWESTERLY CURB RETURN OF GOLDEN AVE AND GRAMERCY PL.

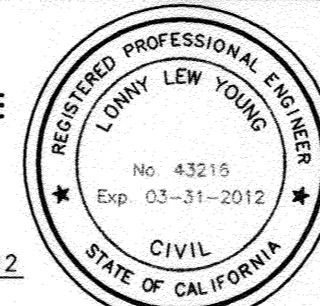
DATUM: 1929

ELEVATION 771.853



ENGINEER IN RESPONSIBLE CHARGE

Loann Y. Young
LOANN Y. YOUNG
R.C.E. No. 43216 EXPIRES: 03-31-2012
DATE: 4/17/2011



DESIGNED BY	LA	DRAWN BY	LA	CHECKED BY	LY
MARK		REVISIONS		APPR. DATE	

CITY OF RIVERSIDE, CALIFORNIA DEPARTMENT OF PUBLIC WORKS

APPROVED BY	BY	DATE	APPROVED BY
ENGINEERING MANAGER			
PRINCIPAL ENGINEER			
CONSTRUCTION ADMIN. SURVEY			

SEWER MAIN LINER REHAB

PIPE LINER REPAIRS AT VARIOUS LOCATIONS FY 11/12

CANTERBURY RD, GOLDEN AVE

HORIZ. SCALE: 1"=60' VERT. SCALE: N/A

ACCT. NO. 9859423203-44030125
DESIGN WORK ORDER NO.: 1208507

S-2093

SHEET 3 OF 3

FILE NAME: S-2093-03