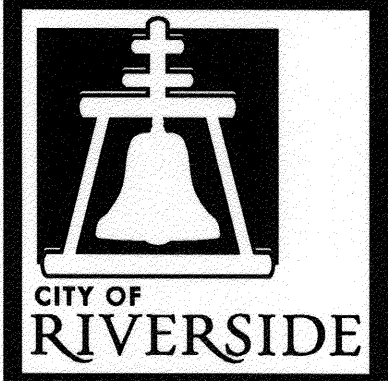


**GENERAL CONSTRUCTION NOTES:**

- 1 EXISTING UTILITIES SHOWN ON THE PLAN, ARE PLOTTED FROM UTILITY RECORDS. THE CONTRACTOR IS REQUIRED TO TAKE DUE PRECAUTIONARY MEASURES TO LOCATE AND PROTECT ALL UTILITIES WHETHER OR NOT SHOWN ON THIS PLAN.
- 2 PRIME CONTRACTORS BIDDING THIS WORK SHALL HAVE A CLASS "A", "C-34", OR A "C-42" LICENSE.
- 3 ALL ELEVATIONS SHOWN ON THE PLANS SHALL BE STAKED IN THE FIELD.
- 4 CONSTRUCTION SHALL BE IN ACCORDANCE WITH THE CITY OF RIVERSIDE STANDARD DRAWINGS AND "STANDARD SPECIFICATIONS FOR PUBLIC WORKS CONSTRUCTION", 2009 EDITION.
- 5 CONTRACTOR SHALL POTHOLE AND VERIFY ALL LOCATIONS AND ELEVATIONS OF UTILITIES PRIOR TO START OF CONSTRUCTION TO ELIMINATE INTERFERENCE WITH THE REPAIR WORK.
- 6 PIPE JOINTS FOR PROPOSED VCP SHALL BE TYPE "G", PER SECTION 208-2.3 OF THE STANDARD SPECIFICATIONS.

# RIVERSIDE CALIFORNIA



## PUBLIC WORKS DEPARTMENT

### DATE STREET SEWER RELOCATION

**CONSTRUCTION LEGEND:**

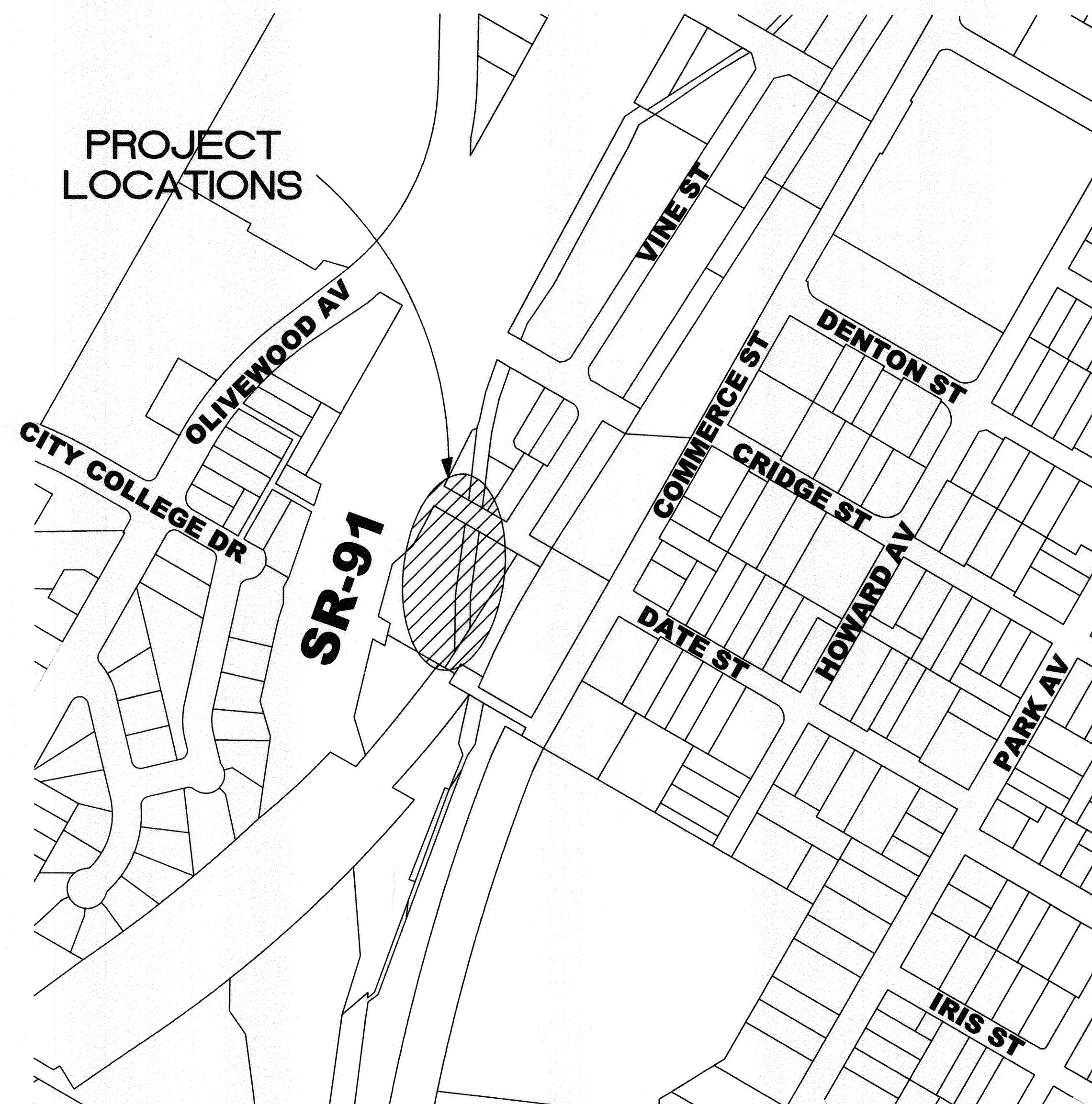
- R/W --- STREET R/W
- PL --- PROPERTY LINE
- CURB --- CURB

**EXISTING TOPOGRAPHY:**

- (S) SANITARY SEWER M.H.
- PALM TREE
- EXISTING STRUCTURES
- MEDIAN
- BUSHES/SHRUBS
- GUARD RAIL
- EXISTING SIDEWALK

**SPECIFIC CONSTRUCTION NOTES:**

- NUMBERS ABOVE 100 IN A HEXAGON ON THE PLAN REFER TO THE RESPECTIVE STANDARD DRAWING AND SHALL BE CONSTRUCTED ACCORDINGLY. UNLESS MODIFICATIONS ARE NOTED ON THE PLAN, ANY NUMBER SHOWN BELOW THE STANDARD DRAWING NUMBER INDICATES THE SPECIFIC ALTERNATE TO BE CONSTRUCTED.
- 1 EXISTING SEWER TO REMAIN IN SERVICE.
  - 2 EXISTING SEWER MANHOLE TO REMAIN IN SERVICE.
  - 3 ABANDON EXISTING SEWER SERVICE IN PLACE. ABANDONMENT INCLUDES FILLING EXISTING SEWER PIPE WITH SLURRY AND SEALED WITH CONCRETE AT EACH END.
  - 4 ABANDON EXISTING SEWER MANHOLE IN PLACE.
  - 5 CONSTRUCT NEW 8" VCP SEWER MAIN.
  - 6 PROPOSED SEWER MAIN PER S-2095.
  - 7 PROPOSED SEWER MANHOLE PER S-2095.
  - 8 PROPOSED SEWER MANHOLE PER S-2095. MODIFY PER GREENBOOK, 2006 EDITION, STANDARD PLAN #202-1



VICINITY MAP  
NTS

**EXISTING UNDERGROUND UTILITIES:**

- EXISTING SEWER --- 8" SS ---
- EXISTING WATER --- W ---
- EXISTING STORM DRAIN --- EX SD ---
- EXISTING TELEPHONE --- CATV ---

**SEWER SHEET INDEX:**

SHEET NO.	DESCRIPTION
1	TITLE SHEET
2	DATE STREET PLAN AND PROFILE SHEET

BENCHMARK: H6-13

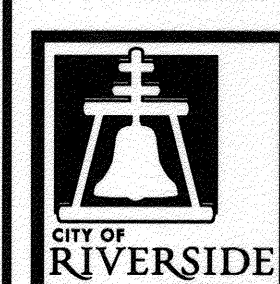
P.K NAIL AND CITY ENGINEER TAG IN THE WESTERLY CURB OF HOWARD AVENUE, 1 FOOT NORTHERLY OF THE B.C.R. OF THE NORTHWEST CURB RETURN AT HOWARD AVENUE AND DENTON STREET.

DATUM: 1929

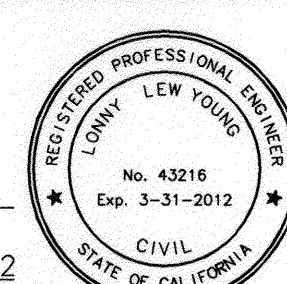
ELEVATION 887.900



Under Ground Service Alert of Southern California  
Call: TOLL FREE 1-800-227-2600  
TWO WORKING DAYS BEFORE YOU DIG



ENGINEER IN RESPONSIBLE CHARGE  
Name: Lanny B. Young  
R.C.E. No. 43216 EXPIRES: 3-31-2012  
DATE: 12/13/2011

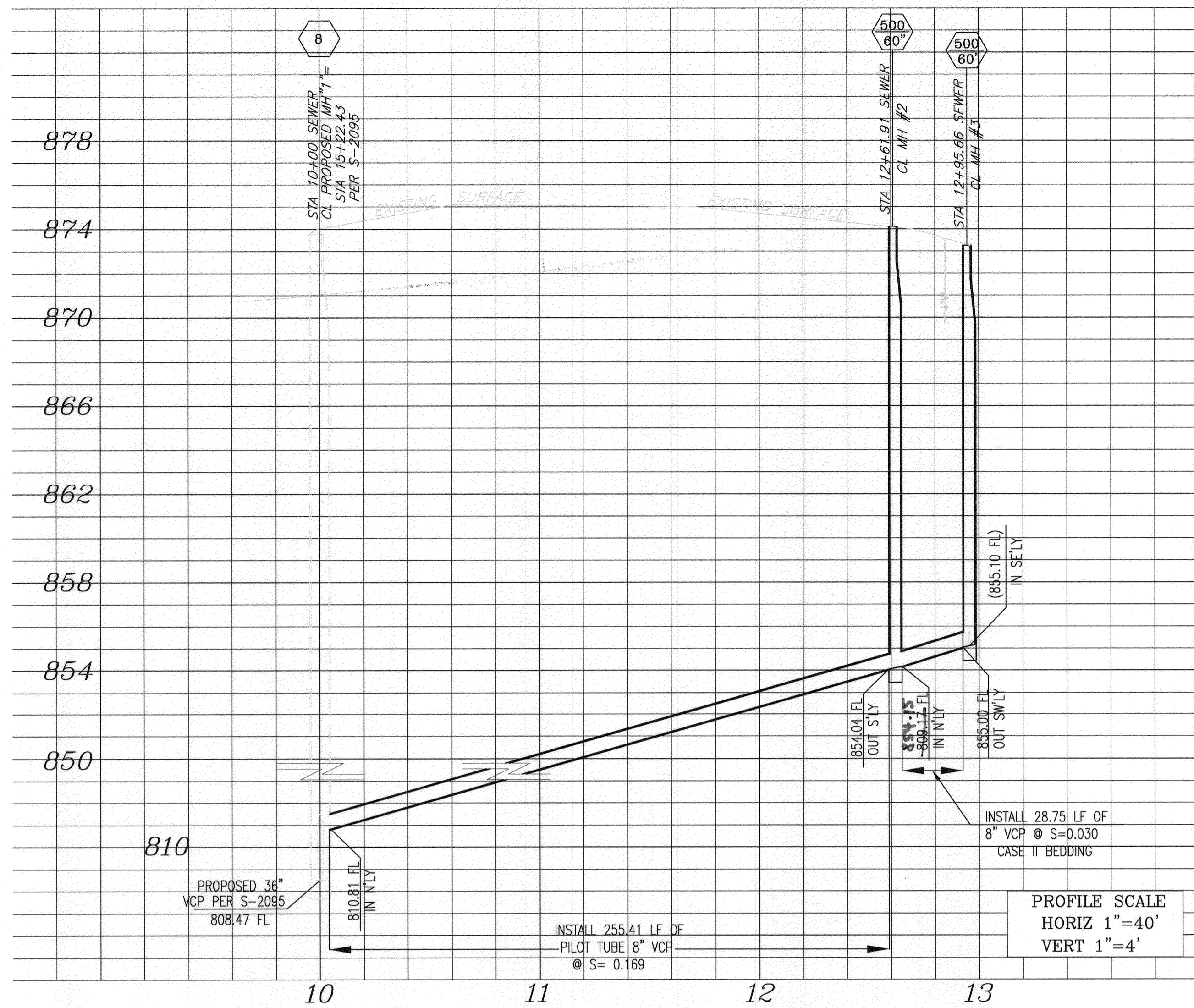


MARK	REVISIONS	APPR.	DATE
DESIGNED BY	DRAWN BY	CHECKED BY	

CITY OF RIVERSIDE, CALIFORNIA DEPARTMENT OF PUBLIC WORKS			
APPROVED BY	BY	DATE	APPROVED BY
PRINCIPAL ENGINEER			
ENGINEERING MANAGER	FM	12/15/11	CITY ENGINEER
CONSTRUCTION ADMIN.	DC	12/15/11	
SURVEY	WMS	12/17/11	
			DATE: 2/19/2011

SEWER RELOCATION	S-2096
DATE STREET SEWER RELOCATION	SHEET 1 OF 2
SCALE: 1" = 40'	FILE NAME: S-2096.DWG

AS-BUILT 08-05-2014



### SPECIFIC CONSTRUCTION NOTES:

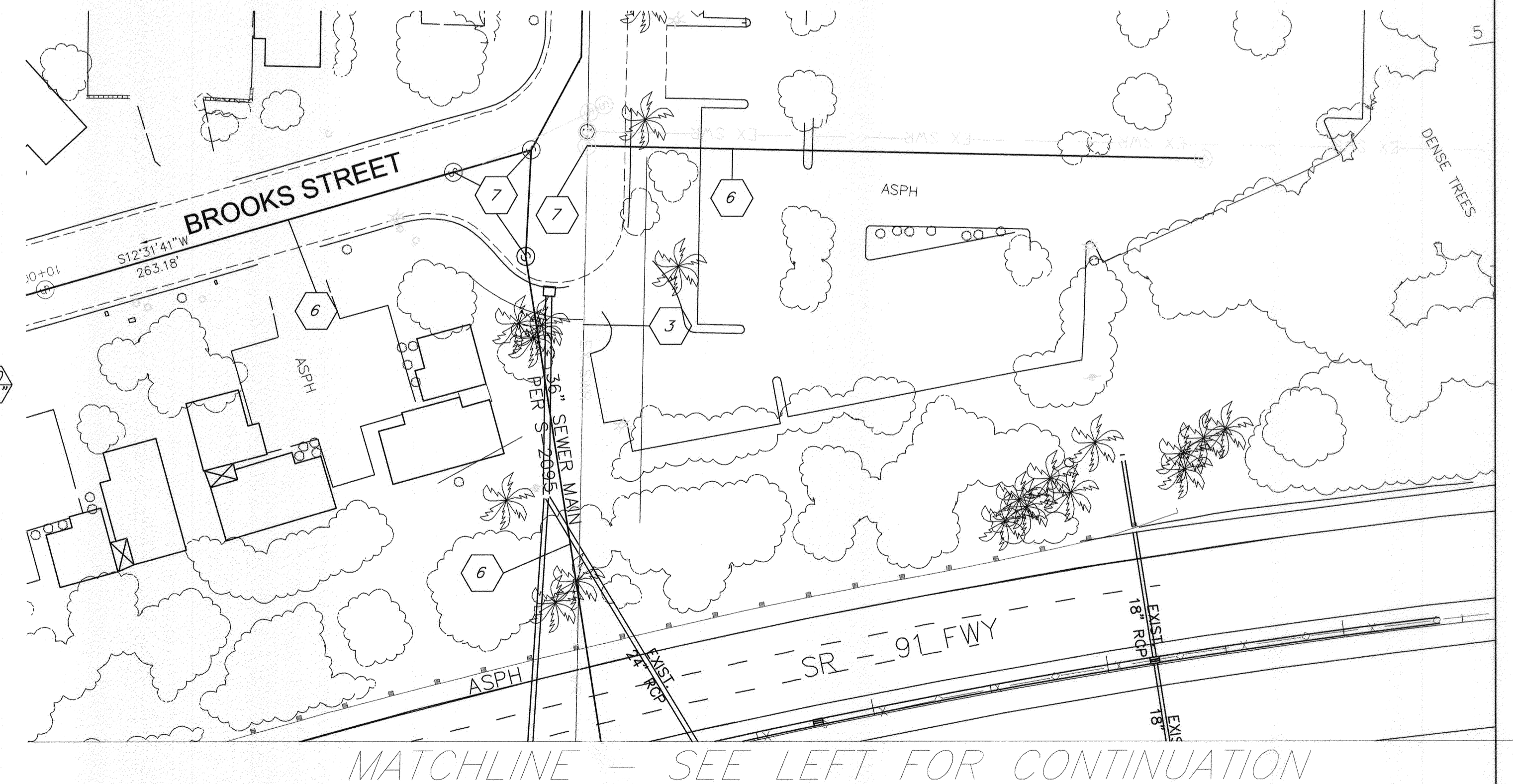
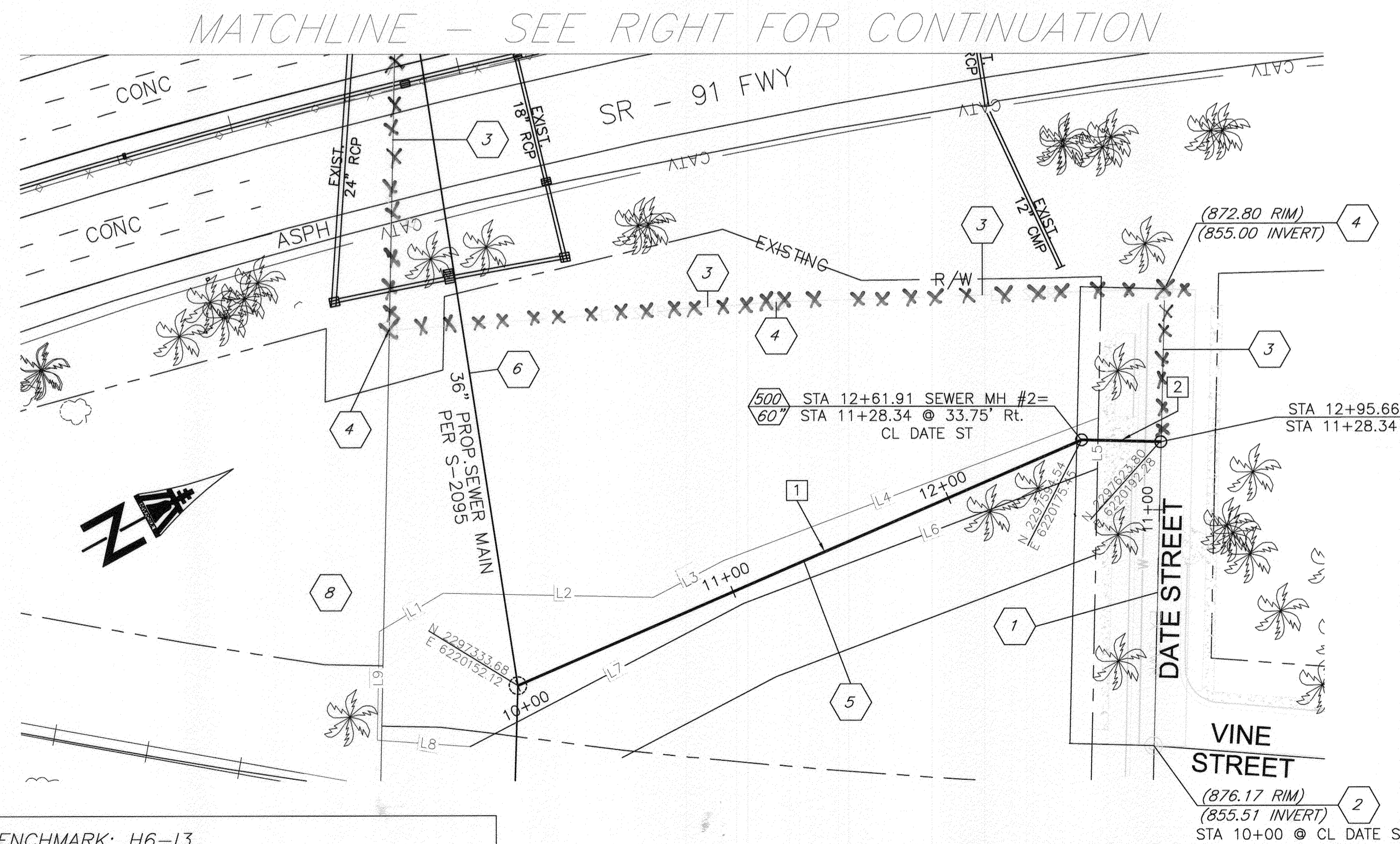
- NUMBERS ABOVE 100 IN A HEXAGON ON THE PLAN REFER TO THE RESPECTIVE STANDARD DRAWING AND SHALL BE CONSTRUCTED ACCORDINGLY. UNLESS MODIFICATIONS ARE NOTED ON THE PLAN. ANY NUMBER SHOWN BELOW THE STANDARD DRAWING NUMBER INDICATES THE SPECIFIC ALTERNATE TO BE CONSTRUCTED.
- 1 EXISTING SEWER TO REMAIN IN SERVICE.
  - 2 EXISTING SEWER MANHOLE TO REMAIN IN SERVICE.
  - 3 ABANDON EXISTING SEWER SERVICE IN PLACE. ABANDONMENT INCLUDES FILLING EXISTING SEWER PIPE WITH SLURRY AND SEALED WITH CONCRETE AT EACH END.
  - 4 ABANDON EXISTING SEWER MANHOLE IN PLACE.
  - 5 CONSTRUCT NEW PILOT TUBE 8" VCP SEWER MAIN.
  - 6 PROPOSED SEWER MAIN PER S-2095.
  - 7 PROPOSED SEWER MANHOLE PER S-2095.
  - 8 PROPOSED SEWER MANHOLE PER S-2095.

SEWER EASEMENT INFORMATION LINE DATA TABLE

#	BEARING	LENGTH
L1	S 02°16'02" E	31.64'
L2	N 29°39'53" E	89.60'
L3	N 00°58'47" E	33.96'
L4	N 07°47'40" E	170.72'
L5	S 60°18'23" E	21.50'
L6	N 07°47'40" E	161.31'
L7	N 00°59'15" E	131.41'
L8	N 32°37'09" E	39.76'
L9	N 60°23'07" E	46.02'

SEWER MAIN LINE DATA TABLE

#	LENGTH	BEARING
1	261.91'	N 05°06'43" E
2	33.75'	N 29°54'33" E

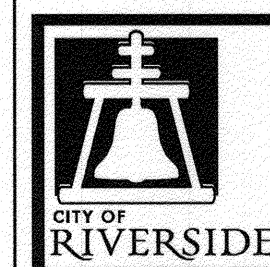


BENCHMARK: H6-13

P.K NAIL AND CITY ENGINEER TAG IN THE WESTERLY CURB OF HOWARD AVENUE, 1 FOOT NORTHERLY OF THE B.C.R. OF THE NORTHWEST CURB RETURN AT HOWARD AVENUE AND DENTON STREET.

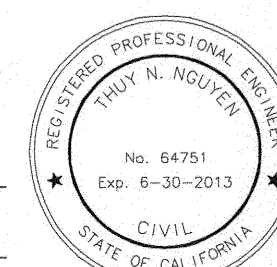
DATUM: 1929

ELEVATION 887.900



ENGINEER IN RESPONSIBLE CHARGE

THUY N. NGUYEN  
R.C.E. No. 64751 EXPIRES: 6-30-13  
DATE



MARK	REVISIONS	APPR.	DATE

APPROVED BY	BY	DATE
ENGINEERING MANAGER		
TRAFFIC		
CONSTRUCTION ADMIN		
SURVEYOR		

CITY OF RIVERSIDE, CALIFORNIA  
PUBLIC WORKS DEPARTMENT

APPROVED BY

CITY ENGINEER

DATE

SEWER RELOCATIONS

DATE STREET SEWER RELOCATION

HORIZ. SCALE: 1" = 40' VERT. SCALE: 1" = 4'

S-2096

SHEET 2 OF 2

FILE NAME: S-2096.DWG