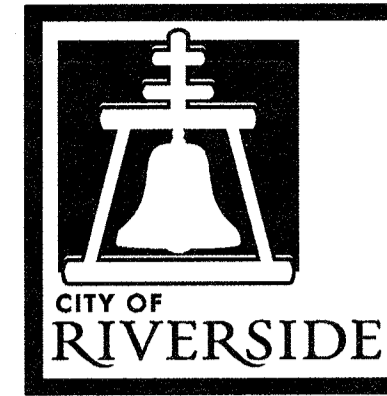


# RIVERSIDE



# CALIFORNIA

## PUBLIC WORKS DEPARTMENT

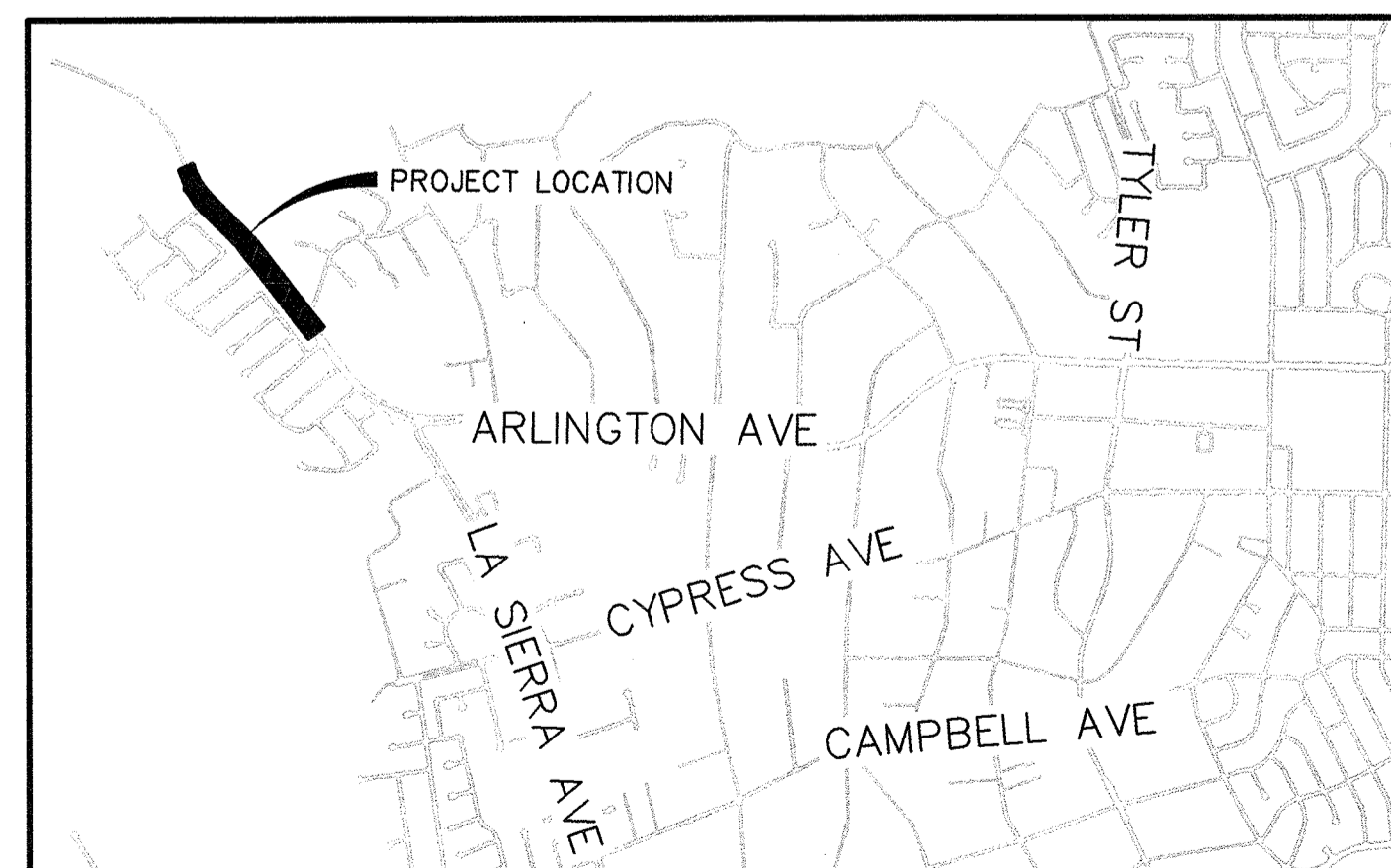
# ARLINGTON AVENUE SEWER CONSTRUCTION AND DEMOLITION OF SEWER PUMP

### CONSTRUCTION NOTES:

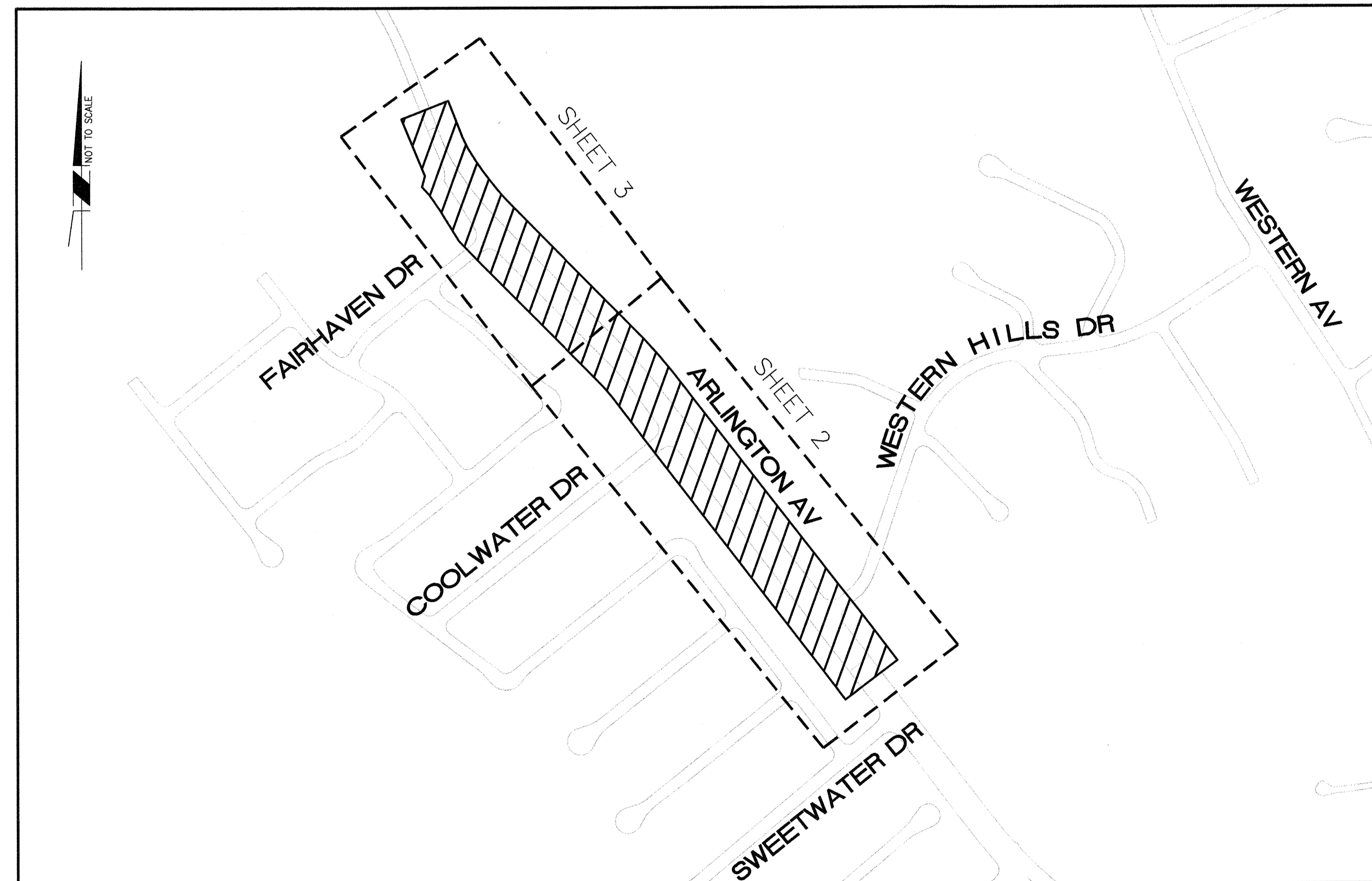
- NUMBERS ABOVE 100 IN A HEXAGON ON THE PLAN REFER TO THE RESPECTIVE STANDARD DRAWING AND SHALL BE CONSTRUCTED ACCORDINGLY, UNLESS MODIFICATIONS ARE NOTED ON THE PLAN OR COVER SHEET. ANY NUMBER SHOWN BELOW THE STANDARD DRAWING NUMBER INDICATES THE SPECIFIC ALTERNATE TO BE CONSTRUCTED.
- MODIFY EXISTING FACILITY, DESCRIPTION PER PLAN (---):  
(MH) MANHOLE, PER DESCRIPTION IN PLAN VIEW.  
(CO) CLEANOUT, PER DESCRIPTION IN PLAN VIEW.
- PROTECT IN PLACE EXISTING FACILITY, DESCRIPTION PER PLAN (---):  
(MH) MANHOLE.  
(WTR) WATER LINE.  
(SL) STREET LIGHT.  
(SS) SANITARY SEWER LINE.
- ADJUST MANHOLE TO GRADE.
- ABANDON EXISTING FACILITY, DESCRIPTION PER PLAN (---):  
(CO) CLEANOUT.  
(SS) SANITARY SEWER PIPE. ABANDON IN PLACE ALL BELOW GRADE CONDUIT DEEPER THAN 36". REMOVE AND DISPOSE OF ALL BELOW GRADE CONDUIT SHALLOWER THAN 36". PROVIDE CONDUIT CAPS AT THE END OF ALL ABANDONED CONDUIT.  
(MH) MANHOLE. CORE DRILL MANHOLE FOUNDATION IN 4 PLACES, EQUALLY SPACED, EACH CORE DRILL SHALL BE 12" IN DIAMETER. REMOVE AND DISPOSE OF UPPER 5" (MINIMUM) OF MANHOLE SHAFT. BACKFILL TRENCH PER CITY STD 453.  
(GV) GATE VALVE.
- RECONFIGURE MANHOLE CHANNEL PER DETAIL SHOWN ON PLAN.
- CAP MANHOLE CHANNEL PER DETAIL SHOWN ON PLAN AND AS DESCRIBED IN STANDARD SPECIFICATIONS.
- 0.12" MINIMUM DEPTH VARIABLE AREA COLD MILL OF EXISTING AC PAVEMENT.
- OVERLAY DGAC PAVEMENT. REPLACEMENT DEPTH SHALL MATCH AC THICKNESS TO BE REMOVED UNLESS OTHERWISE NOTED.
- CONSTRUCT PRECAST CONCRETE SEWER MANHOLE PER CITY STD 500 MODIFIED TO INCLUDE GMI MANHOLE COVER AND FRAME AND TO BE CONSTRUCTED WITHOUT INTERIOR STEPS OR SOCKETS, DESCRIPTION PER PLAN (---):  
(48") MINIMUM 48" DIAMETER  
(60") MINIMUM 60" DIAMETER

### LEGEND:

- WATER LINE
- ELECTRICAL CONDUIT
- EDGE OF PAVEMENT
- CITY RIGHT-OF-WAY
- WATER METER
- STREET LIGHT
- PULLBOX
- FIRE HYDRANT
- GATE VALVE



**VICINITY MAP**  
NTS



### INDEX MAP

NTS

#### LEGEND

- PROJECT LOCATION
- SHEET LIMITS

### GENERAL CONSTRUCTION NOTES:

1. PRIME CONTRACTOR BIDDING THIS WORK SHALL HAVE A CLASS "A", OR A "C-21" AND "C-34", OR A "C-21" AND "C-42" LICENSE.
2. THE CONTRACTOR SHALL PROVIDE AND MAINTAIN TRAFFIC AS INDICATED IN THE ASSOCIATED PROJECT SPECIAL PROVISIONS.
3. CONSTRUCTION SHALL BE IN ACCORDANCE WITH THE CITY OF RIVERSIDE STANDARD DRAWINGS AND STANDARD SPECIFICATIONS FOR PUBLIC WORKS CONSTRUCTION, 2012 EDITION.
4. EXISTING UTILITIES SHOWN ON THIS PLAN ARE PLOTTED FROM PUBLIC RECORDS. THE CONTRACTOR IS REQUIRED TO TAKE DUE PRECAUTIONARY MEASURES TO LOCATE AND PROTECT ALL UTILITIES WHETHER OR NOT SHOWN ON THIS PLAN WITHIN THE CONSTRUCTION WORK AREAS.
5. THE CONTRACTOR SHALL CONTACT UNDERGROUND SERVICE ALERT (USA) 1-800-227-2600, MINIMUM TWO WORKING DAYS PRIOR TO DIGGING. CONSTRUCTION SHALL NOT TAKE PLACE UNLESS ALL UNDERGROUND UTILITIES HAVE BEEN MARKED AND CONTRACTOR HAS BEEN PROVIDED WITH AN INQUIRY IDENTIFICATION NUMBER.
6. CONTRACTOR SHALL POTHOLE AND VERIFY ALL LOCATIONS AND ELEVATIONS OF UTILITIES PRIOR TO START OF CONSTRUCTION AND NOTIFY THE CITY ENGINEER FOR RESOLUTION PRIOR TO START OF CONSTRUCTION.
7. EXISTING IRRIGATIONS SHALL BE PROTECTED OR MODIFIED AS NECESSARY SO THE IRRIGATION SYSTEM IS OPERABLE WHILE THE PROPOSED IMPROVEMENTS ARE BEING CONSTRUCTED.
8. EXISTING HARDSCAPE AND/OR LANDSCAPE DAMAGED DURING CONSTRUCTION SHALL BE REPAIRED AND/OR REPLACED IN KIND OR BETTER BY THE CONTRACTOR TO THE SATISFACTION OF THE CITY ENGINEER.
9. ALL ELEVATIONS SHOWN ON THE PLANS SHALL BE STAKED IN THE FIELD.
10. TRENCHES SHALL EITHER BE BACKFILLED AND COMPACTED PER STANDARD DRAWING 453 OR COVERED WITH TRAFFIC RATED STEEL PLATES AT THE END OF EACH WORK DAY OR AS SPECIFIED IN THE SPECIFICATIONS.
11. WATER VALVES ENCOUNTERED DURING PIPELINE CONSTRUCTION OR DURING RESTORATION OF SURFACE IMPROVEMENTS SHALL BE PROTECTED IN PLACE, RESTORED TO PRE-CONSTRUCTION CONDITION AND/OR ADJUSTED TO GRADE, UNLESS NOTED OTHERWISE ON THESE PLANS.
12. CONTRACTOR SHALL PERFORM A PRE AND POST CONSTRUCTION VIDEO OF THE SEWER MAIN GRAVITY LINES. CONTRACTOR SHALL BE RESPONSIBLE FOR LOCATING AND VIDEOING ALL SEWER LATERALS FROM THE MAINLINE TO THE PROPERTY LINE.
13. PIPE BEDDING SHALL BE PER STD. DWG. 452 AND CASE SHALL BE AS SPECIFIED ON THE PLANS.
14. CONTRACTOR SHALL RELOCATE ALL TRAFFIC SIGNS, REMOVED DUE TO CONSTRUCTION, PER CITY STANDARDS. ALL TRAFFIC SIGNS SHALL BE INSTALLED PRIOR TO OPENING THE STREETS TO TRAFFIC.
15. REPLACE STRIPING AND PAVEMENT MARKERS REMOVED OR DAMAGED BY CONSTRUCTION ACTIVITIES. STRIPING SHALL BE THERMOPLASTIC.
16. CONTRACTOR SHALL MAINTAIN ACTIVE SEWER FLOW IN EXISTING MAINS AS NECESSARY THROUGHOUT THE CONSTRUCTION PROCESS EXCEPT WHERE NOTED OTHERWISE UNTIL THE NEW SEWER MAIN HAS BEEN APPROVED AND ACCEPTED BY THE CITY ENGINEER.

### SHEET INDEX:

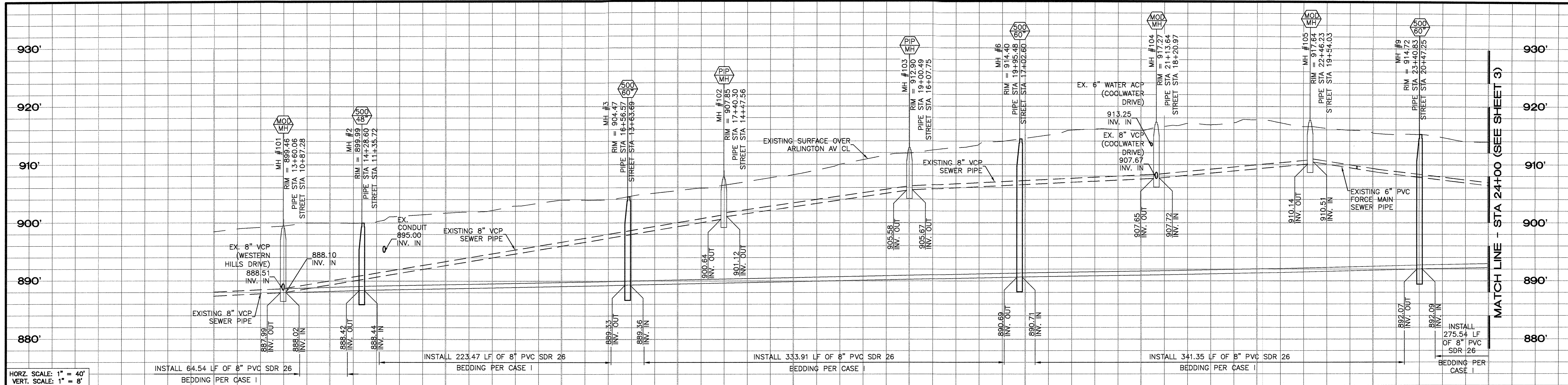
SHEET NO.	DESCRIPTION
1	TITLE SHEET AND GENERAL NOTES
2	STA 13+60.06 TO STA 24+00
3	STA 24+00 TO STA 31+11.56
4	LIFT STATION DEMO AND M.H. DETAILS

### ABBREVIATIONS:

CO	CLEANOUT	PVC	POLYVINYL CHLORIDE PIPE
MH	MANHOLE	AC	ASPHALT CONCRETE
VCP	VITRIFIED CLAY PIPE	DGAC	DENSE GRADED ASPHALT CONCRETE

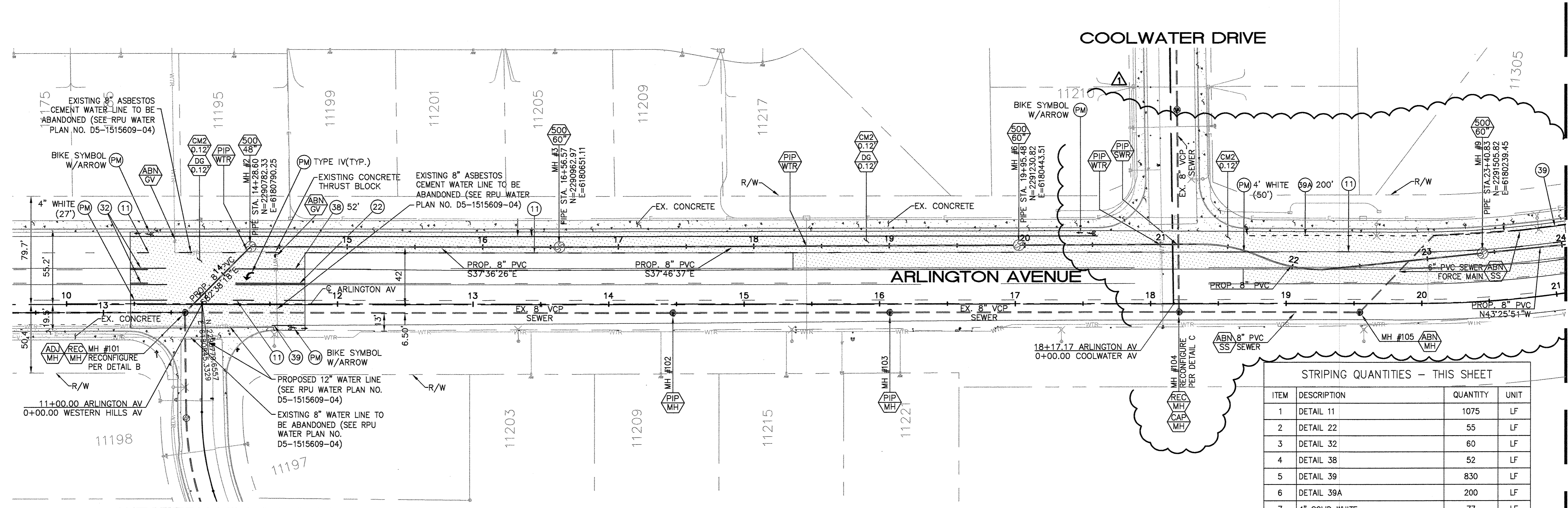
AS-BUILT 09/29/2017

	<b>ENGINEER IN RESPONSIBLE CHARGE</b> Thuy Nguyen R.C.E. No. 64751 EXPIRES: 6-30-17 DATE: 8/22/16		AS-BUILT REVISIONS: _____ APPR. DATE: _____ DESIGNED BY: BL DRAWN BY: BL CHECKED BY: TN	<b>CITY OF RIVERSIDE, CALIFORNIA</b> DEPARTMENT OF PUBLIC WORKS APPROVED BY: _____ ENGINEERING MANAGER: FM DATE: 9/25/16 CONSTRUCTION ADMIN. DATE: 8/23/16 TRAFFIC DIVISION: _____ DATE: 9/1/16 SURVEY: _____ STREETS: _____	<b>SEWER CONSTRUCTION</b> ARLINGTON AVENUE SEWER CONSTRUCTION AND DEMOLITION OF SEWER PUMP TITLE SHEET AND GENERAL NOTES HORIZ. SCALE: NA VERT. SCALE: NA	DESIGN WORK ORDER NO.: 1304690 CONSTR. WORK ORDER NO.: 1703265 <b>S-2134</b> SHEET 1 OF 4 FILE NAME: S2134-01.DWG
	Under Ground Service Alert of Southern California Call: TOLL FREE 1-800-227-2600 <b>TWO WORKING DAYS BEFORE YOU DIG</b>					



HORZ. SCALE: 1" = 40'  
 VERT. SCALE: 1" = 8'

INSTALL 64.54 LF OF 8" PVC SDR 26 BEDDING PER CASE I  
 INSTALL 223.47 LF OF 8" PVC SDR 26 BEDDING PER CASE I  
 INSTALL 333.91 LF OF 8" PVC SDR 26 BEDDING PER CASE I  
 INSTALL 341.35 LF OF 8" PVC SDR 26 BEDDING PER CASE I  
 INSTALL 275.54 LF OF 8" PVC SDR 26 BEDDING PER CASE I

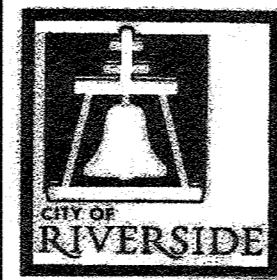


STRIPING QUANTITIES - THIS SHEET

ITEM	DESCRIPTION	QUANTITY	UNIT
1	DETAIL 11	1075	LF
2	DETAIL 22	55	LF
3	DETAIL 32	60	LF
4	DETAIL 38	52	LF
5	DETAIL 39	830	LF
6	DETAIL 39A	200	LF
7	4" SOLID WHITE	77	LF
8	PAVEMENT LEGENDS/MARKINGS	45	SF



Under Ground Service Alert of Southern California  
 Call: TOLL FREE 1-800-227-2600  
 TWO WORKING DAYS BEFORE YOU DIG



ENGINEER IN RESPONSIBLE CHARGE  
 Thuy Nguyen  
 R.C.E. No. 64751 EXPIRES: 6-30-17  
 DATE: 9/22/16

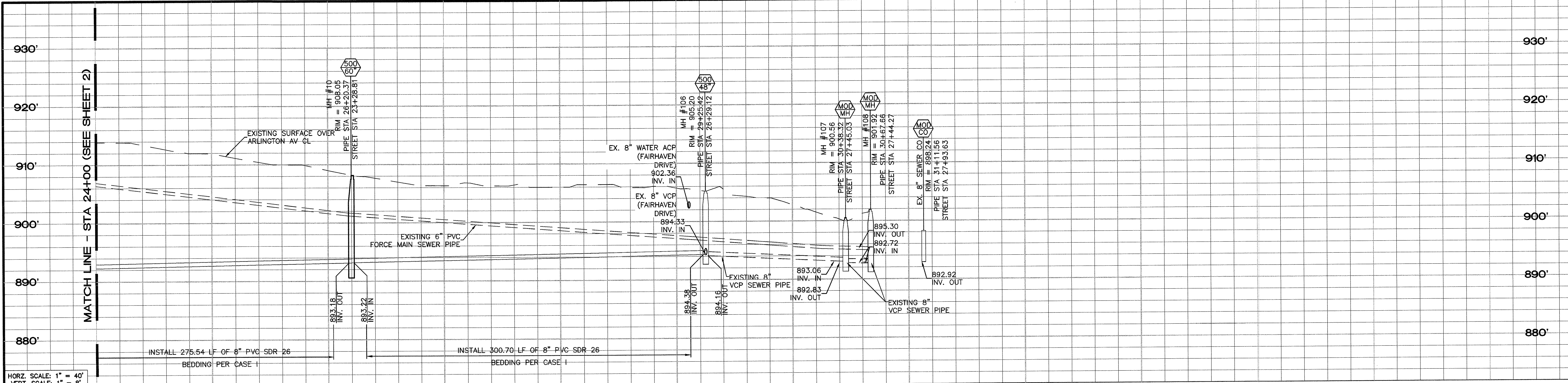


AS-BUILT  
 DESIGNED BY: BL DRAWN BY: BL CHECKED BY: TN

CITY OF RIVERSIDE, CALIFORNIA  
 DEPARTMENT OF PUBLIC WORKS  
 APPROVED BY: [Signature]  
 ENGINEERING MANAGER  
 CONSTRUCTION ADMIN.  
 TRAFFIC DIVISION  
 SURVEY  
 DATE: 9/1/16

AS-BUILT 09/29/2017  
 SEWER CONSTRUCTION  
 ARLINGTON AVENUE SEWER CONSTRUCTION AND DEMOLITION OF SEWER PUMP  
 STA 13+60.06 TO STA 24+00  
 HORIZ. SCALE: 1"=40' VERT. SCALE: 1"=8'

DESIGN WORK ORDER NO.: 1304690  
 CONSTR. WORK ORDER NO.: 1703265  
 S-2134  
 SHEET 2 OF 4  
 FILE NAME: S2134-02.DWG

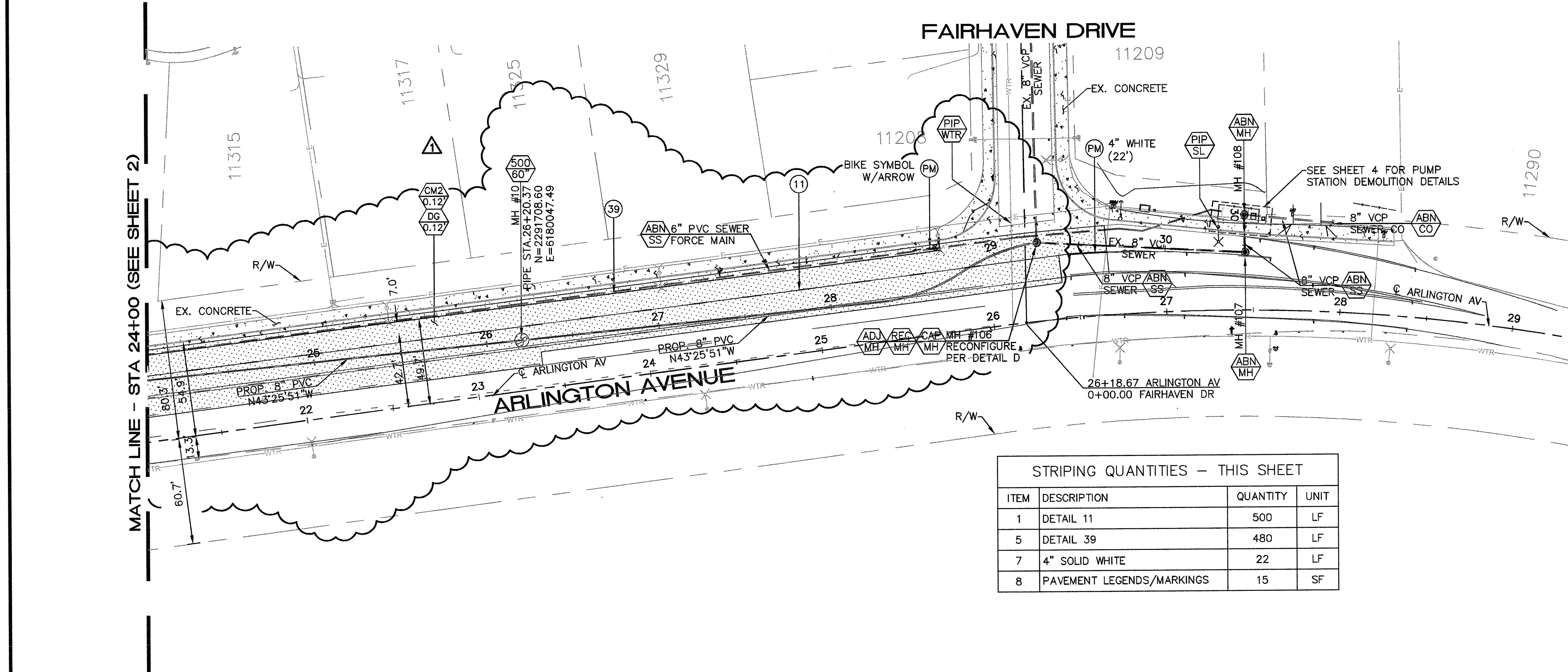


HORZ. SCALE: 1" = 40'  
 VERT. SCALE: 1" = 8'

INSTALL 275.54 LF OF 8" PVC SDR 26 BEDDING PER CASE I

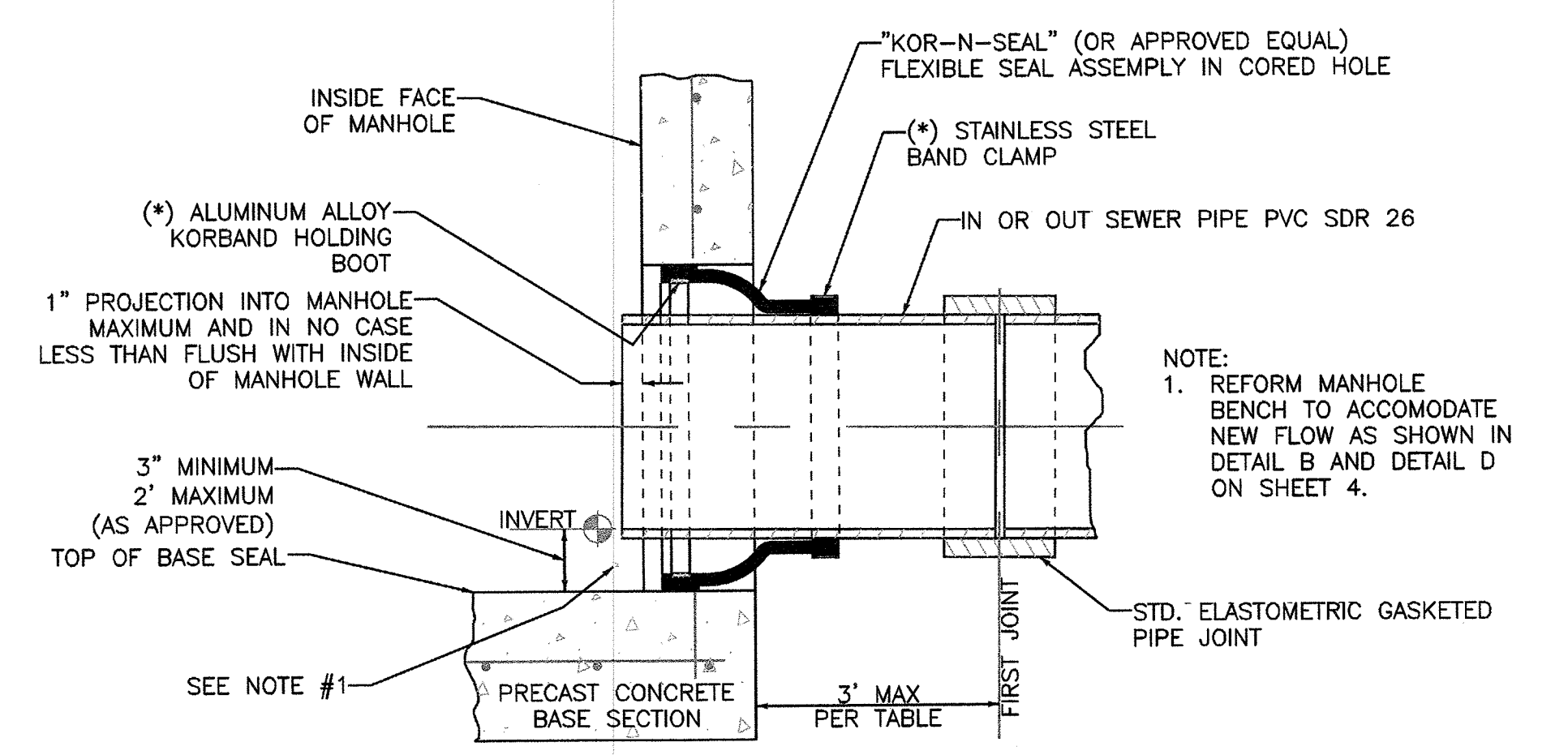
INSTALL 300.70 LF OF 8" PVC SDR 26 BEDDING PER CASE I

24+00 26+00 28+00 30+00 32+00

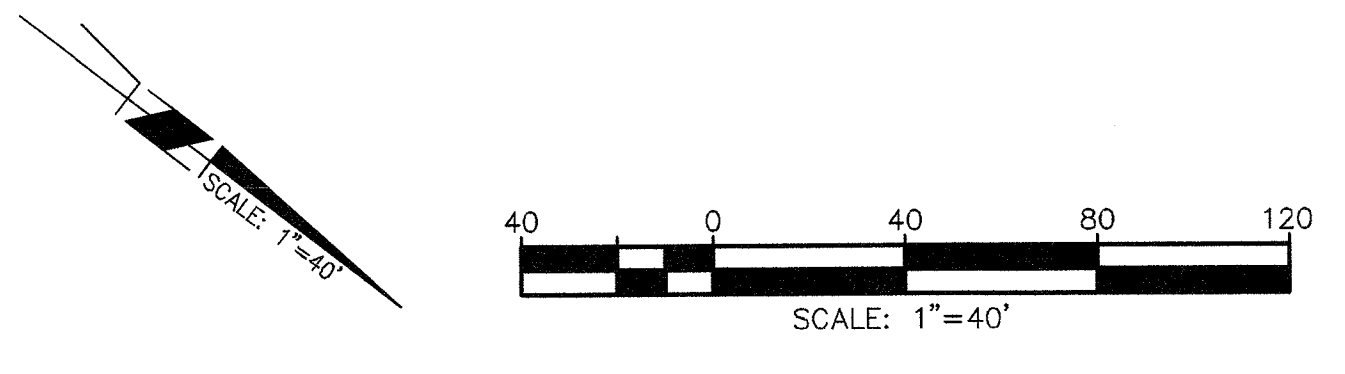


STRIPING QUANTITIES - THIS SHEET

ITEM	DESCRIPTION	QUANTITY	UNIT
1	DETAIL 11	500	LF
5	DETAIL 39	480	LF
7	4" SOLID WHITE	22	LF
8	PAVEMENT LEGENDS/MARKINGS	15	SF



DETAIL A: CORED HOLE FLEXIBLE PIPE-TO-M.H. JOINT  
 NOT TO SCALE



Under Ground Service Alert of Southern California  
 Call: TOLL FREE 1-800-227-2600  
 TWO WORKING DAYS BEFORE YOU DIG

**ENGINEER IN RESPONSIBLE CHARGE**  
 Thuy Nguyen  
 R.C.E. No. 64751 EXPIRES: 6-30-17  
 DATE: 8/22/16

AS-BUILT  
 DESIGNED BY: BL  
 DRAWN BY: BL  
 CHECKED BY: TN

**CITY OF RIVERSIDE, CALIFORNIA**  
 DEPARTMENT OF PUBLIC WORKS

APPROVED BY: [Signature]  
 ENGINEERING MANAGER  
 CONSTRUCTION ADMIN.  
 DATE: 8/23/16

AS-BUILT 09/29/2017

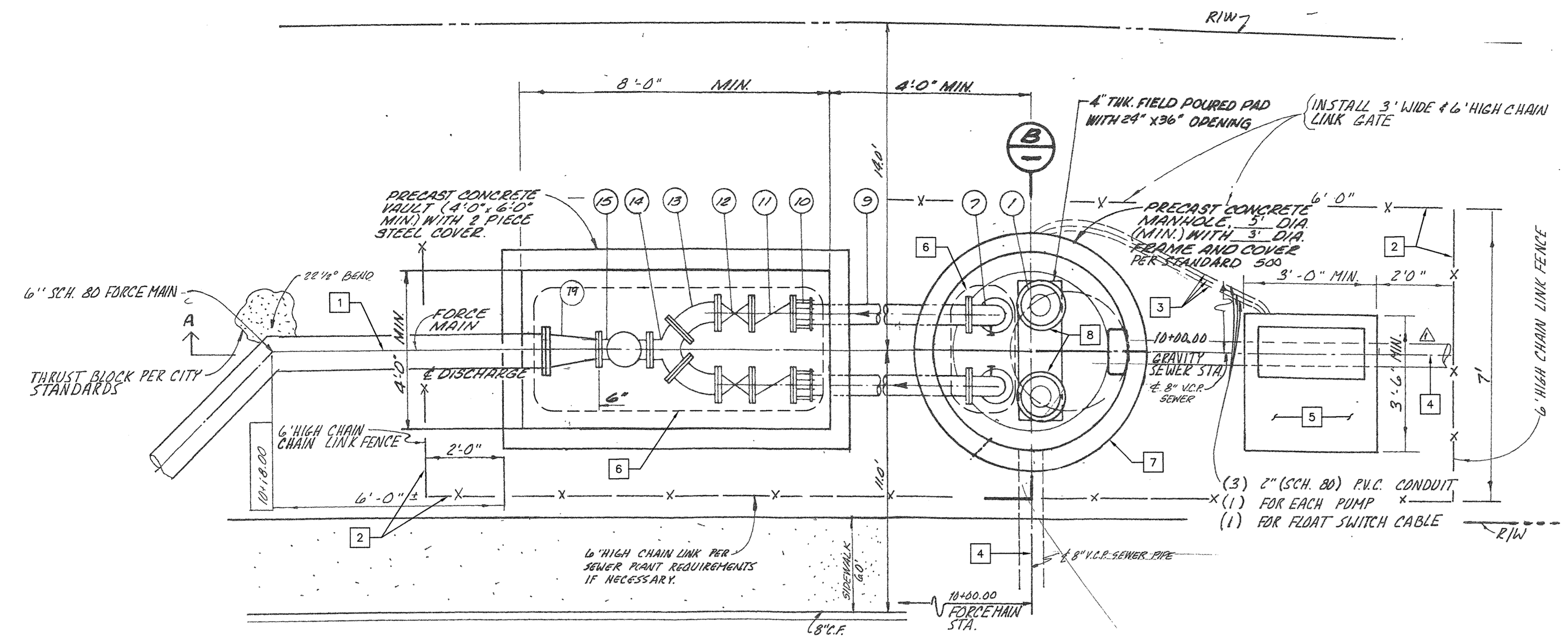
**SEWER CONSTRUCTION**  
**ARLINGTON AVENUE SEWER CONSTRUCTION AND DEMOLITION OF SEWER PUMP**  
 STA 24+00 TO 31+11.56

DESIGN WORK ORDER NO.: 1304690  
 CONSTR. WORK ORDER NO.: 1703265

**S-2134**  
 SHEET 3 OF 4  
 FILE NAME: S2134-03.DWG

**CONSTRUCTION NOTES (THIS SHEET ONLY):**

1. FILL EXISTING ABANDONED FORCE MAIN WITH 1 SACK CEMENT/SAND SLURRY OR CONTROLLED LOW STRENGTH MATERIAL (CLSM).
2. REMOVE AND DISPOSE OF CHAIN LINK FENCE.
3. REMOVE CONDUCTORS FROM CONDUIT, ABANDON IN PLACE ALL BELOW GRADE CONDUIT DEEPER THAN 36". REMOVE AND DISPOSE OF ALL BELOW GRADE CONDUIT AND CONDUCTORS SHALLOWER THAN 36". REMOVE VERTICAL CONDUIT RISER AND PROVIDE CONDUIT CAPS AT THE END OF ALL ABANDONED CONDUIT.
4. FILL EXISTING ABANDONED SEWER WITH 2 SACK CEMENT/SAND SLURRY.
5. REMOVE AND SALVAGE EXISTING CONTROL PANEL, ELECTRICAL SERVICE, AND RTU. COORDINATE WITH CITY.
6. REMOVE AND DISPOSE OF DISCHARGE PIPING, VALVES, AND FITTINGS.
7. REMOVE AND DISPOSE OF WET WELL MANHOLE FRAME AND COVER.
8. REMOVE AND SALVAGE SUBMERSIBLE PUMP. REMOVE AND DISPOSE OF BASE ELBOW, DISCHARGE HOSE, PUMP POWER AND CONTROL CABLES, AND LIFTING CHAIN/CABLE. CLEAN WITH HIGH PRESSURE WATER SPRAY. PUMP TO BE DELIVERED TO CITY YARD. COORDINATE WITH CITY.
9. REMOVE AND DISPOSE OF UPPER 5' (MINIMUM) OF WET WELL SHAFT.
10. REMOVE AND DISPOSE OF WET WELL FLOATS. (NOT SHOW ON PLANS)
11. CORE DRILL WET WELL FOUNDATION IN 4 PLACES, EQUALLY SPACED. EACH CORE DRILL SHALL BE 12" IN DIAMETER AND SHALL BE DRILLED COMPLETELY THROUGH THE FOUNDATION.
12. FILL WET WELL SHAFT AND EXCAVATION WITH ROAD BASE MATERIAL COMPACTED TO 90% RELATIVE COMPACTION TO 4" BELOW FINISHED SURFACE.
13. REMOVE AND DISPOSE OF UPPER 5' (MINIMUM) OF VALVE CHAMBER (VAULT) INCLUDING STEEL COVER.
14. CORE DRILL VALVE CHAMBER FOUNDATION IN 4 PLACES, EQUALLY SPACED. EACH CORE DRILL SHALL BE 12" IN DIAMETER AND SHALL BE DRILLED COMPLETELY THROUGH THE FOUNDATION.
15. FILL VALVE CHAMBER AND EXCAVATION WITH ROAD BASE MATERIAL COMPACTED TO 90% RELATIVE COMPACTION TO 4" BELOW FINISHED SURFACE.
16. REMOVE AND DISPOSE OF CONTROL PANEL FOUNDATION AND GROUNDING ROD. FILL EXCAVATION WITH ROAD BASE MATERIAL COMPACTED TO 90% RELATIVE COMPACTION TO 4" BELOW FINISHED SURFACE.
17. CONSTRUCT SIDEWALK PER CITY STD 325 ABOVE COMPACTED ROAD BASE TO BE FLUSH WITH EXISTING FINISHED SURFACE.

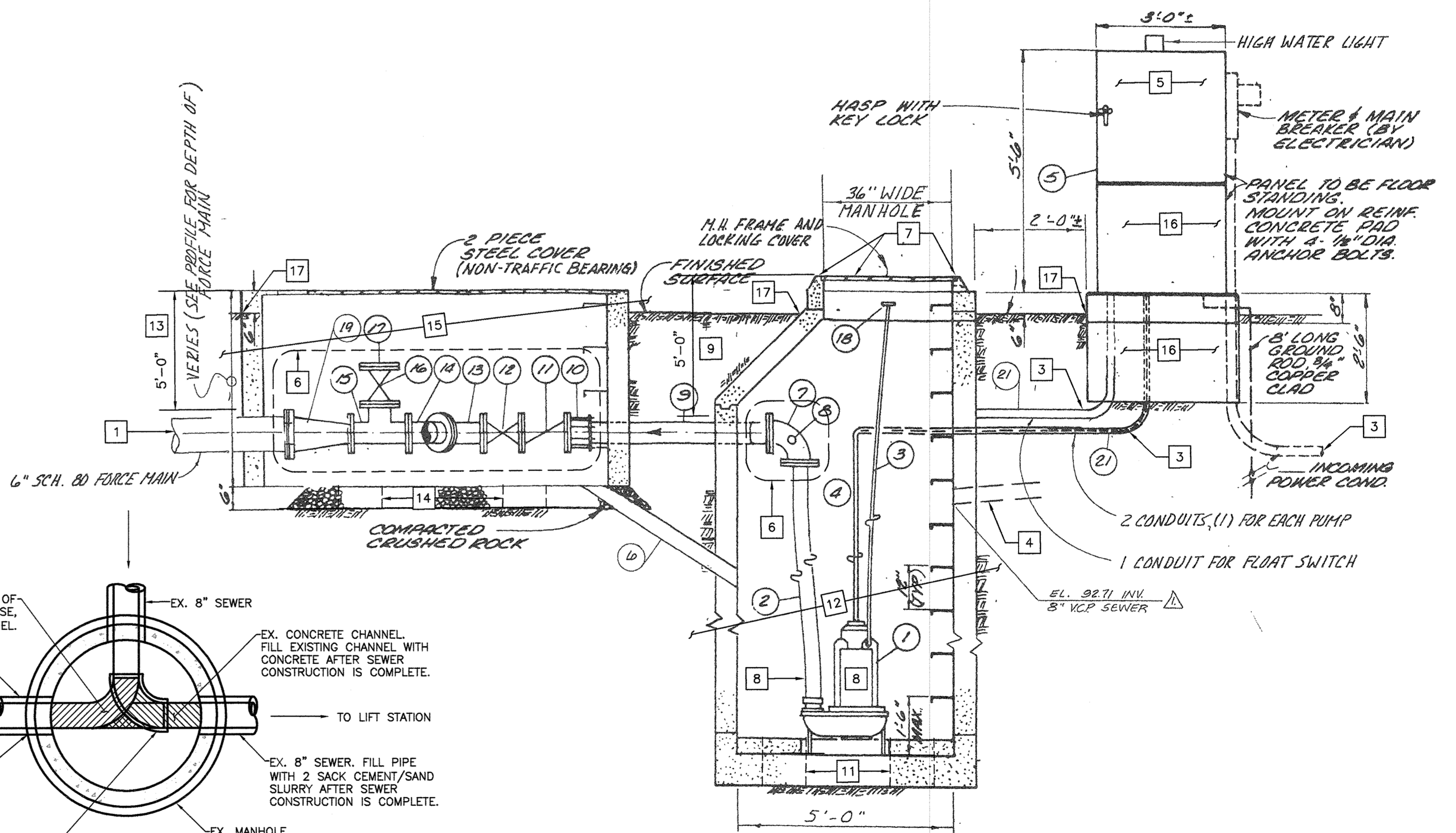


**VALVE CHAMBER AND LIFT STATION PLAN VIEW**

NOT TO SCALE

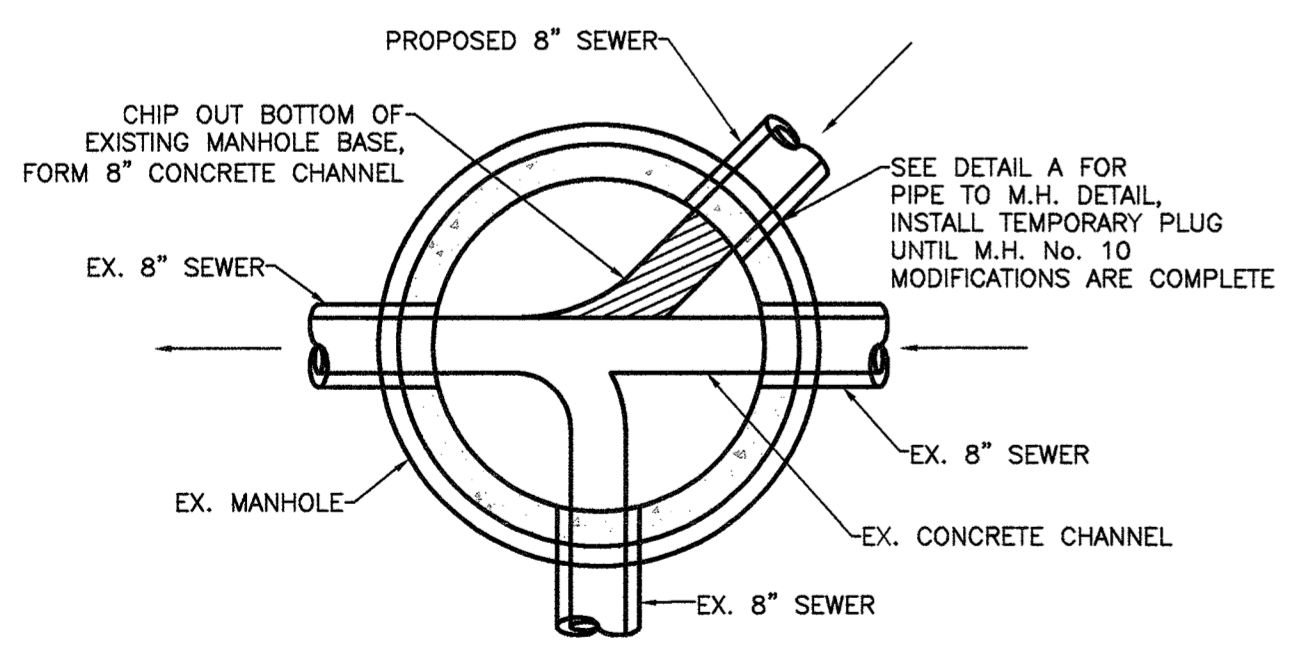
**GENERAL NOTES (THIS SHEET ONLY):**

- A. DEMOLITION SHALL NOT PROCEED UNTIL CONSTRUCTION OF NEW SEWER PIPES AND MANHOLES HAVE BEEN COMPLETED, MANHOLE NO. 101 HAS BEEN CAPPED IN THE DIRECTION OF THE LIFT STATION, EXISTING LIFT STATION IS NO LONGER IN OPERATION, AND ELECTRICAL SERVICE HAS BEEN TERMINATED BY THE CITY.
- B. UNLESS OTHERWISE NOTED, BELOW GRADE HORIZONTAL PIPING RUNS DEEPER THAN 48" SHALL BE ABANDONED IN PLACE. PROVIDE APPROPRIATE BLIND FLANGES, CAPS, THREADED PLUGS, ETC. AT ENDS OF ALL ABANDONED PIPING. BELOW GRADE HORIZONTAL CONDUIT RUNS SHALLOWER THAN 48" SHALL BE REMOVED.
- C. CONTRACTOR SHALL COORDINATE WITH CITY THE REMOVAL OF ALL CITY OWNED EQUIPMENT AND MATERIAL, INCLUDING SERVICE METER, TRANSFORMER, AND SERVICE CONDUCTORS.
- D. ALL ELECTRICAL CONDUCTORS SHALL BE DISCONNECTED FROM THE ASSOCIATED EQUIPMENT AND REMOVED FROM THE CONDUIT. ALL ABOVE GRADE CONDUIT SHALL BE REMOVED. VERTICAL CONDUIT RISERS AND SWEEPS SHALL BE REMOVED TO BELOW GRADE TRANSITION WITH HORIZONTAL CONDUIT. BELOW GRADE HORIZONTAL CONDUIT RUNS DEEPER THAN 36" SHALL BE ABANDONED IN PLACE. PROVIDE CONDUIT CAPS AT ENDS OF ALL ABANDONED CONDUIT. BELOW GRADE HORIZONTAL CONDUIT RUNS SHALLOWER THAN 36" SHALL BE REMOVED.
- E. BELOW GRADE AREAS AND VOIDS CREATED BY REMOVAL OF BELOW GRADE FACILITIES OR DEMOLITION OF STRUCTURES SHALL BE BACKFILLED WITH ROADBASE MATERIAL COMPACTED TO 90% RELATIVE COMPACTION.



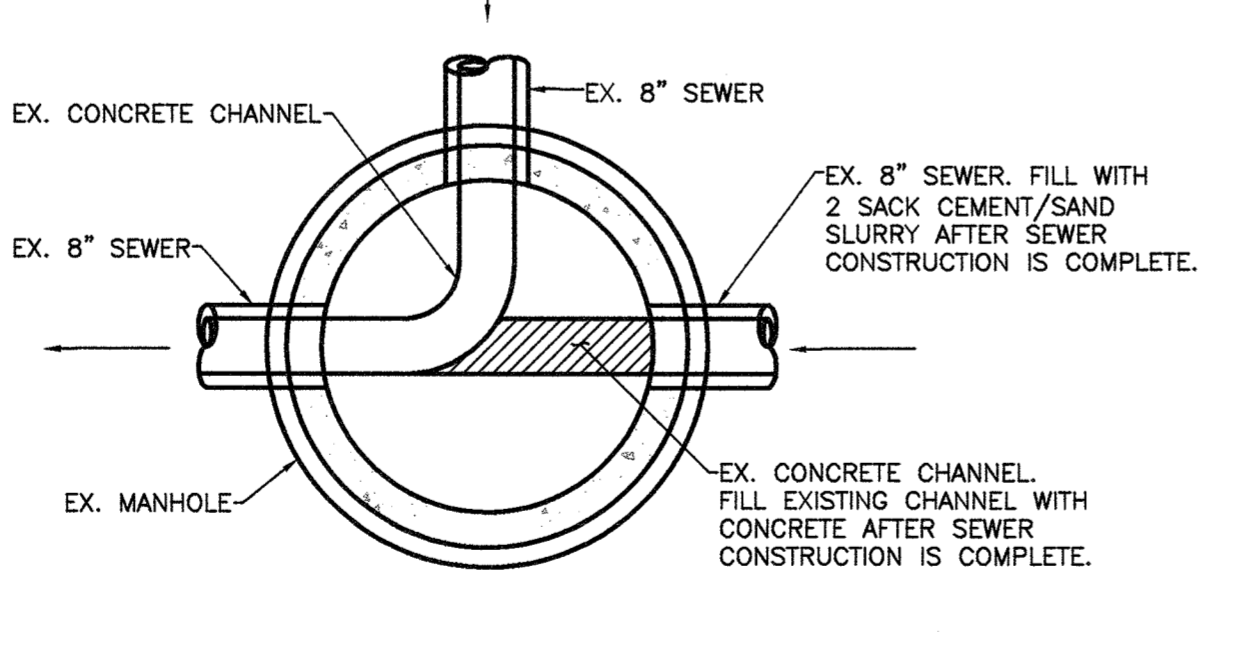
**SECTION A-A: VALVE CHAMBER AND LIFT STATION**

NOT TO SCALE



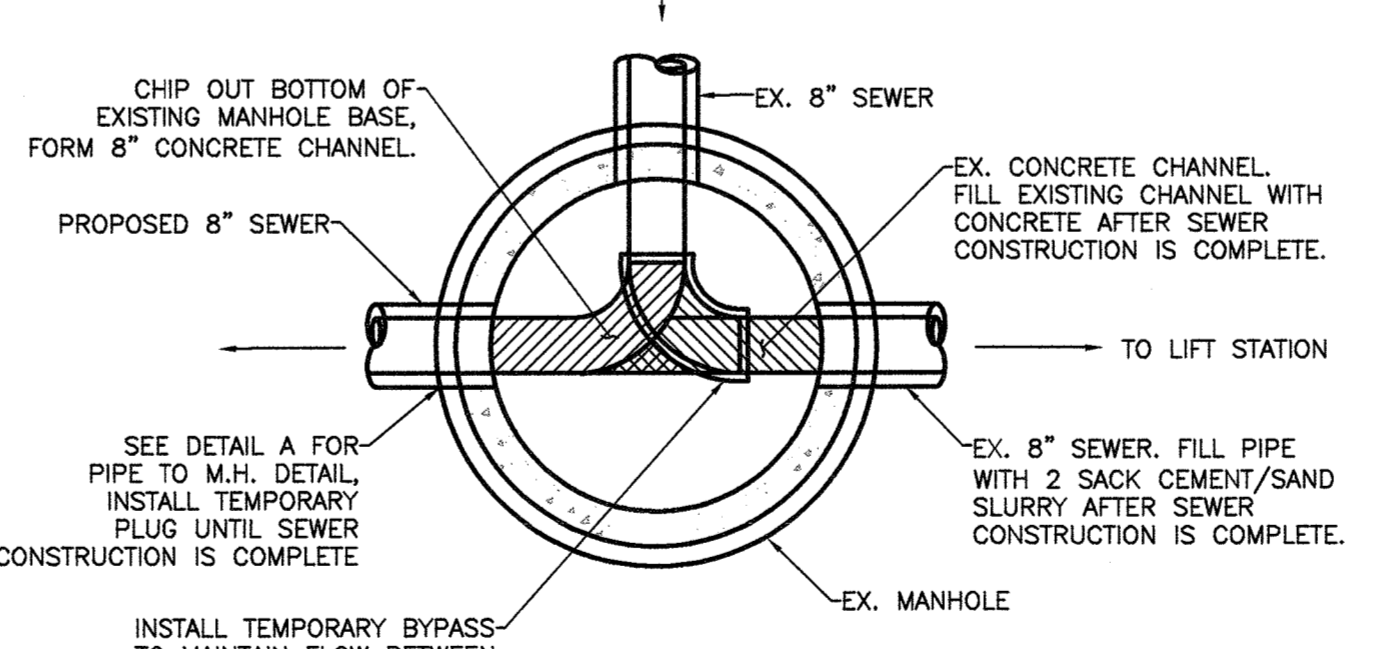
**DETAIL B: MANHOLE No. 101**

NOT TO SCALE



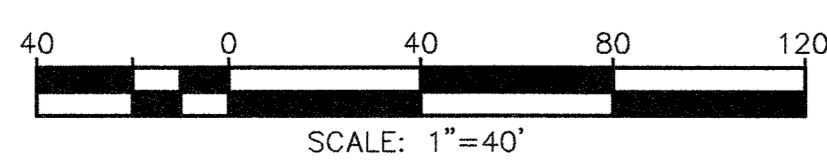
**DETAIL C: MANHOLE No. 104**

NOT TO SCALE

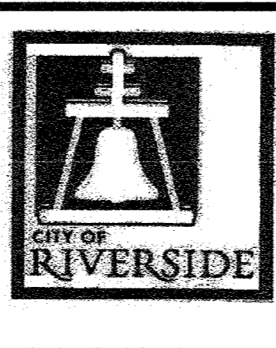


**DETAIL D: MANHOLE No. 106**

NOT TO SCALE



Under Ground Service Alert of Southern California  
Call: TOLL FREE 1-800-227-2600  
TWO WORKING DAYS BEFORE YOU DIG



**ENGINEER IN RESPONSIBLE CHARGE**  
Thuy Nguyen  
R.C.E. No. 64751 EXPIRES: 8-30-17  
DATE: 8/22/16



DESIGNED BY	BL	DRAWN BY	BL	CHECKED BY	TN
AS-BUILT					

CITY OF RIVERSIDE, CALIFORNIA DEPARTMENT OF PUBLIC WORKS			
APPROVED BY	BY	DATE	APPROVED BY
ENGINEERING MANAGER	EM	7/26/16	CITY ENGINEER
CONSTRUCTION ADMIN.	CA	8/23/16	
TRAFFIC DIVISION		8/22/16	
SURVEY		9/1/16	
STREETS			

AS-BUILT 09/29/2017

**SEWER CONSTRUCTION**  
ARLINGTON AVENUE SEWER CONSTRUCTION AND DEMOLITION OF SEWER PUMP  
SEWER PUMP DEMO AND M.H. DETAILS

DESIGN WORK ORDER NO.: 1304690  
CONSTR. WORK ORDER NO.: 1703265  
**S-2134**  
SHEET 4 OF 4  
FILE NAME: S2134-04.DWG